



Q U I T T E N B A U M

Kunstauktionen München

ART NOUVEAU
ART DECO

Auction 180 A

09 December 2025



ART NOUVEAU ART DECO

AUCTION 180 A

TUESDAY, 09 DECEMBER 2025

3 P.M.

**PREVIEW:
THERESIENSTR. 60**

Thursday	04.12.	10 a.m. - 6 p.m.
Friday	05.12.	10 a.m. - 6 p.m.
Saturday	06.12.	1 p.m. - 5 p.m.
Sunday	07.12.	1 p.m. - 5 p.m.
Monday	08.2.	10 a.m. - 6 p.m.

**QUITTENBAUM
Kunstauktionen GmbH**

Managing director: Askan Quittenbaum
Theresienstrasse 60 · D-80333 Munich
Phone (+49) 89-27 37 02 10
Fax (+49) 89-27 37 02 122
E-Mail info@quittenbaum.de
Opening hours: Tues - Fri
10 a.m. - 1 p.m. und 3 p.m. - 6 p.m.
and by appointment



Mitglied der Initiative
Datenbank
kritischer Werke

BDK

Bundesverband Deutscher Kunstversteigerer e.V.



1

1
Daum Frères, Nancy
Bowl 'Boule cabossée, Aurore, Platanes', 1893

H. 9 cm, 28.2 x 17.5 cm. Execution: Daum Frères, Nancy. Cased glass, opalescent light amber and colorless. Etched decoration heightened with gold, plane tree branches in a morning mood. Signed: DAUM NANCY, Cross of Lorraine (raised).
€ 1.400 - 1.600

2
Daum Frères, Nancy
Vase 'Iris', 1894

H. 26.8 cm. Colorless glass, gradient violet. Etched, polychrome enameled, and gilded with irises. Bottom signed: Daum, Cross of Lorraine, Nancy (gold signature).
Daum, Daum maîtres verriers, Lausanne 1980, p. 123.
€ 1.500 - 1.800

3
Daum Frères, Nancy
Tall Martelé Vase 'Iris', c. 1894

H. 39.5 cm. Cased glass, colorless, opal white, and violet. Etched and partially cut, entirely reworked with the wheel in martelé cut, with irises. Bottom signed: DAUM, Cross of Lorraine, NANCY (engraved).
€ 2.000 - 3.000

4
Henri Bergé
Jar 'Au gui l'an neuf', c. 1897

H. 6.3 cm. Execution: Daum Frères, Nancy. Cased glass, colorless and green. Etched, enameled, and heightened with gold. Decoration with mistletoe on a rough background. A gilded frieze with a mistletoe motif appears on the lid's rim. Signed: Daum Cross of Lorraine Nancy (raised).
€ 900 - 1.200

5
Henri Bergé
Martelé Vase 'Tulipes', 1898/99

H. 19.5 cm. Execution: Daum Frères, Nancy. Cased glass, colorless, milk white, pink, and deep green. Etched decoration with blooming tulips, the ground almost entirely reworked in the martelé technique. Signed on the ground pontil: DAUM NANCY, Cross of Lorraine (engraved).
Büttiker, Daum verrerie de Nancy, Zurich 1974, No. 37.
€ 1.400 - 1.600



3



4



5



2



6

6
Henri Bergé
Vase 'Tulipes', 1898/99

H. 15.6 cm. Execution: Daum Frères, Nancy. Cased glass, colorless, opal white, pink, and deep green. Etched decoration featuring blooming tulips, almost entirely reworked using the Martelé technique. Signed on the ground pontil: DAUM NANCY, Cross of Lorraine (engraved). Büttiker, Daum verrerie de Nancy, Zurich 1974, No. 37.
€ 3.400 - 3.800



7

7
Henri Bergé
Intercalaire Vase 'Pluviose', 1899-1902

H. 15.7 cm. Cased glass, colorless, etched decoration between layers, blue powder inclusions and green powder fusion, black trees. Surface partially reworked with the wheel. Bottom signed: DAUM NANCY, Cross of Lorraine (engraved and rubbed in gold). Cf. Ricke/Schmitt, Glass coll. Gerda Koepff, Kunstmuseum Düsseldorf, Munich 1998, No. 90.
€ 4.000 - 6.000



8

8
Daum Frères, Nancy
Two vases 'Paysage Delft', c. 1899

H. 13.7 cm. Colorless glass. Etched landscape decoration heightened with black solder. Gilded rim. Not signed.
€ 500 - 600



9

9
Daum Frères, Nancy
Small 'Martelé Vase 'Bleuets' with silver mounting, 1900-03

H. 9.8 cm. Cased glass, milky opalescent, colorless, and violet. Etched cornflower decor, the ground reworked with martelé cut. Base signed: DAUM NANCY, Cross of Lorraine (engraved). Base stamped: Head of Minerva.
€ 1.800 - 2.200



12

11
Daum Frères, Nancy
Vase 'Chardons', Pâte grise, c. 1902

H. 19.2 cm. Cased glass, colorless and milk white, with pink and green powder inclusions, green and gray enamel fusions, so-called 'pâte grise'. Etched decoration with thistle plants, lustered. Bottom signed: Daum Nancy, Cross of Lorraine (engraved), paper label, inscribed: No. 35.
€ 1.200 - 1.400



13

14
Daum Frères, Nancy
Two wall lights 'Pissenlit', c. 1910

H. 47 cm, 31.5 x 16 cm. Cased glass, colorless, light blue powder fusions, and green enamel. Etched dandelion decoration. Shades signed: DAUM, Cross of Lorraine, NANCY (engraved). Bronze mounts.
€ 2.500 - 3.500

10
Daum Frères, Nancy
Vase 'Maïs', c. 1900

H. 29.7 cm. Cased glass, colorless, opal white, and orange with enclosed burst precious metal foil. Etched and cut, entirely reworked with the wheel, featuring a corncob. Bottom signed: DAUM, Cross of Lorraine, NANCY (engraved).
€ 3.000 - 4.000

12
Daum Frères, Nancy
Small bowl 'Orchidées', 1905-10

H. 7.5 cm, Ø 14 cm. Cased glass, colorless, with whitish, orange powder inclusions in the lower area; dark green, rust-brown marbled enamel vitrifications. Etched and enameled decoration with a motif of grasses and wild orchids. Signed: DAUM NANCY, Cross of Lorraine (raised).
€ 1.200 - 1.400

13
Daum Frères, Nancy
Bowl 'Jacinthes sauvages', 1906

H. 6.4 cm, Ø 12 cm. Cased glass, colorless, with yellow, brown, and dark blue powder inclusions. Etched and enameled decoration with hyacinths. Signed: Daum Nancy, Cross of Lorraine (raised).
€ 800 - 900



14



10



11



15
Daum Frères, Nancy
Tall vase 'Ancolies', c. 1910
 H. 52.5 cm. Cased glass, colorless with yellow and deep violet powder inclusions. Etched and polychrome enameled decor with a blooming columbine. Signed: DAUM NANCY, Cross of Lorraine (raised).
€ 1.500 - 2.000

16
Daum Frères, Nancy
Tall Vase 'Feuilles en Automne', c. 1910
 H. 35.5 cm. Cased glass, colorless, with milk white and yellow powder inclusions, rust-brown enamel fusions. Etched decoration with autumn leaves. Signed: DAUM NANCY, Cross of Lorraine (raised).
€ 1.400 - 1.800

15



16



17

17
Daum Frères, Nancy
Table light 'Paysage', c. 1910
 H. 35 cm, Ø 19.5 cm. Cased glass, colorless, with white and pink powder inclusions, and green enamel fusions. Etched decoration depicting a tree-lined lake landscape. Signed: DAUM NANCY, Cross of Lorraine or DN, Cross of Lorraine (raised). Wrought iron mount.
€ 4.000 - 4.800

18
Daum Frères, Nancy
Vase 'Paysage lacustre', c. 1910
 H. 17 cm. Cased glass, colorless, with powder inclusions in raspberry red, yellow, and orange. Etched decoration depicting a tree-lined meadow landscape. Signed: DAUM NANCY, Cross of Lorraine (raised).
€ 1.400 - 1.800

19
Daum Frères, Nancy
Vase 'Voiliers, soleil couchant', c. 1910
 H. 16.3 cm. Cased glass, colorless, with yellow and amber powder inclusions. Etched decoration, heightened with black solder, depicting a coastal landscape with sailboats in the light of the setting sun. Bottom signed: DAUM, Cross of Lorraine, NANCY (black solder).
€ 1.500 - 1.800

20
Daum Frères, Nancy
Bowl 'Cognassier du Japon', c. 1910
 H. 7.8 cm. Cased glass, colorless and amber yellow. Etched and polychrome enameled decoration with branches of the Japanese flowering quince in the light of the setting sun. Signed: DAUM NANCY, Cross of Lorraine, FRANCE (black solder).
€ 1.000 - 1.400

21
Daum Frères, Nancy
Bowl 'Eglantines', c. 1910
 H. 8 cm, Ø 20.5 cm. Cased glass, colorless with yellow, amber, and violet powder inclusions, greenish and orange enamel fusions. Etched decoration with dog rose branches and rose hips. Signed: DAUM NANCY, Cross of Lorraine (raised).
€ 1.200 - 1.400



18



19



20



21



22

**Daum Frères, Nancy
Planter, c. 1910**

H. 11 cm. Cased glass, colorless, blue and yellow powder fusions.
Signed: DAUM, Cross of Lorraine, NANCY (engraved).

Image online.
€ 250 - 300

23

**Daum Frères, Nancy
'Bignones' vase, c. 1912**

H. 21.5 cm. Cased glass, colorless and dark wine red, with orange powder inclusions. Etched decoration with tendrils of morning glory, two open blossoms, and two buds reworked with the wheel, martelé cut at the lip. Base signed: DAUM, Cross of Lorraine, NANCY (engraved). Base marked: 6 (engraved).

€ 800 - 900

24

**Daum Frères, Nancy
'Bignones' vase, c. 1912**

H. 21.2 cm. Cased glass, colorless and dark wine red, with orange powder inclusions. Etched decoration with tendrils of morning glory, two open blossoms, and two buds reworked with the wheel with a martelé cut at the lip. Stand signed: DAUM, Cross of Lorraine, NANCY (engraved).

€ 800 - 1.000

25

**Daum Frères, Nancy
Tall vase 'Digitales', c. 1913**

H. 78 cm. Cased glass, colorless, with orange and yellowish powder inclusions, overlaid with brownish-red. Etched decoration with flowering foxglove panicles. Signed: DAUM NANCY, Cross of Lorraine, FRANCE (raised).

€ 2.200 - 2.800



26

**Daum Frères, Nancy
Vase 'Anémones Pulsatilles', 1913**

H. 28.5 cm. Cased glass, colorless and violet, with blue and yellow powder inclusions. Etched decoration featuring a pasque flower in an evening setting. Signed: DAUM NANCY, Cross of Lorraine (raised).

€ 2.200 - 2.600

27

**Henri Bergé
Rare Vase 'Coup de Vent dans les Arbres', or 'Feuilles d'Automne', 1913-19**

H. 17 cm. Execution: Daum Frères, Nancy. Cased glass, colorless, with greenish-yellow and opal-white powder inclusions, reddish-brown and violet enamel fusions. Etched decoration depicting an autumnal landscape with elms felled by a gust of wind. Signed: DAUM NANCY, Cross of Lorraine (raised).

€ 2.500 - 3.500

28

**Daum Frères, Nancy
Centerpiece 'Eschscholzia', c. 1919**

H. 19.5 cm, Ø 21 cm. Cased glass, colorless, with yellowish and pink powder inclusions. Etched and enameled decoration with California poppies, two blossoms as partial applications, finely wheel-engraved. Signed: DAUM NANCY, Cross of Lorraine (engraved).

€ 1.200 - 1.800



27



28



29

29

Daum Frères, Nancy
Vase 'Palétuviers', c. 1930

H. 30.5 cm, Ø 35 cm. Blue-green glass with etched, stylized floral decoration. Stand signed: DAUM, Cross of Lorraine, NANCY FRANCE (engraved).

€ 2.200 - 2.600

30

Daum Frères, Nancy
Vase 'Rubans et Bulles', c. 1930

H. 30 cm, Ø 26.5 cm. Smoke blue glass. Etched decoration with ribbons and dots. Not signed.

€ 1.800 - 2.000

31

Daum Frères, Nancy
Four-piece liqueur service 'Montgolfier', c. 1930

Carafe and three glasses. H. 10-28 cm. Colorless glass, etched, with a light brown patina. Signed: DAUM NANCY, Cross of Lorraine, FRANCE, carafe and stopper additionally: 10 (engraved).

€ 500 - 600

32

Daum Frères, Nancy
Vase with handles, c. 1930

H. 23.8 cm. Amber-yellow glass, etched. Signed: DAUM, Cross of Lorraine, NANCY FRANCE (needle etching).

€ 500 - 600

33

Daum Frères, Nancy
Bowl, c. 1930

H. 9.5 cm, Ø 18.5 cm. Orange glass. Etched decoration. Base signed: DAUM, Cross of Lorraine, NANCY FRANCE (engraved). Bottom with remnants of a Reims sales label.

€ 600 - 800

34

Daum Frères, Nancy
Vase, c. 1935

H. 10.3 cm, Ø 17 cm. Colorless glass. Etched honeycomb pattern, cut rim. Stand signed: DAUM, Cross of Lorraine, NANCY FRANCE (engraved). Image online.

€ 450 - 500



30



31



32

35

Gabriel Argy-Rousseau
Bowl 'Guirlande', 1925

H. 10 cm, Ø 25.1 cm. Pâte de verre, colorless and violet. Signed: G. ARGY-ROUSSEAU (stamped).

Bloch-Dermant, G. Argy-Rousseau, Paris 1990, No. 25.10.

€ 1.400 - 1.800

36

François Décorchemont, Conches
Bowl, c. 1927

H. 9.8 cm, Ø 15 cm. Pâte de verre, translucent glass, molded, predominantly green with brown streaks. Body with artist's signet. Bottom marked: A 771 (engraved).

€ 1.200 - 1.600



33



35



36



37

Emile Gallé, Nancy
Vase 'Chardons de Lorraine', c. 1884

H. 25.3 cm. Amber glass. Etched and polychrome enameled thistle decoration with gold. Bottom marked: Gallé déposé in a single leaf (needle etching).
€ 1.200 - 1.800

38

Emile Gallé, Nancy
Small Vase 'Ophrys apifera and Orchis', 1890-94

Rolled leaf. H. 15.8 cm. Execution in Meisenthal. Green glass with pink powder inclusions. Etched and enameled decoration with a ragwort (*Ophrys apifera*), two pistils as applied cabochons, and etched panicles of a common orchid (*Orchis*), partially violet. Bottom signed: Cristallerie d'E Gallé Nancy model and decor (needle etching). Tip with tiny chip.
€ 500 - 700

39

Emile Gallé, Nancy
Small Vase 'Anémones de Caen', 1894

H. 14.8 cm. Cased glass, colorless and violet. Etched decoration with dahlias in a nocturnal setting. Fire-polished. Bottom signed: Cristallerie d'E Gallé Nancy modèle et décor déposés (needle etching).
 "This piece is one of the first to be entirely decorated with acid etching and one of the last to be produced in Meisenthal. This technique would later be used on a large scale in Nancy and gradually replace enameling in mass production."
€ 800 - 1.200

37



38



39



40



42



41

40

Emile Gallé, Nancy
Small goblet vase 'Orchis', c. 1895/96

H. 8.5 cm. Brown-tinted glass, optically blown, etched with panicles of orchid. Bottom signed: E Gallé Nancy-Paris déposé GG (needle etching).
€ 650 - 750

41

Emile Gallé, Nancy
Vase 'Tournesol', c. 1895

H. 43.5 cm. Amber glass. Etched and polychrome enameled sunflower decoration with gold. Signed: Gallé (Japanese style, raised).
€ 1.800 - 2.400

42

Emile Gallé, Nancy
'Hellebore' vase, c. 1897

H. 12.5 cm. Cased glass, colorless and brown. Etched and carved decoration with a Christmas rose; fire-polished. Bottom signed: Gallé En Sa Cristallerie à Nancy with leaf (raised).
€ 1.000 - 1.200

43

Emile Gallé, Nancy
Intercalaire Vase 'Paysage aquatique',
1898-1900

H. 25.5 cm. Cased glass, colorless, amber, with blue efflorescence of oxide. Etched and carved decoration with an underwater scene featuring seaweed, mussels, and snail shells. Signed: Gallé (engraved).
€ 3.600 - 4.600



44

44

Emile Gallé, Nancy
Vase 'Pavots', c. 1898

H. 34.3 cm. Cased glass, colorless, opal white, and orange. Etched poppy decoration. Fire-polished. Signed: Gallé (raised).
€ 900 - 1.200

45

Emile Gallé, Nancy
Vase 'Pavots', c. 1898

H. 34 cm. Cased glass, colorless, opal white, and orange. Etched poppy decoration. Fire-polished. Signed: Gallé (raised).
€ 900 - 1.200

46

Emile Gallé, Nancy
Tall Vase 'Noisettes', 1900-02

H. 29.5 cm. Cased glass, colorless, opalescent, and amber. Etched and very elaborately and finely nuanced motif depicting hazel branches and fruits. Completely worked with the wheel. Signed: Gallé (engraved).
Foot with small repairs.
€ 1.000 - 1.500



45



46



47

**Emile Gallé, Nancy
Vase 'Iris', c. 1900**

H. 16.8 cm. Cased glass, colorless, opal white, with embedded silver and gold efflorescence, as well as brown. Etched and partially worked with the wheel, martelé-cut tulip decoration. Signed: Gallé (engraved).
€ 1.400 - 2.400

48

**Emile Gallé, Nancy
Bowl 'Chêne Lorraine', c. 1900**

H. 14 cm. Cased glass, bottle green, colorless, and amber; deep blue powder inclusions (salissures intercalaires) between the layers. Etched decoration with oak leaves and fruit, matte-etched interior. Signed: Gallé (raised).
€ 1.600 - 2.200



47

48



49

**Emile Gallé, Nancy
Marqueterie Vase 'Paysage et
Papillons', c. 1900**

H. 30.5 cm. Cased glass, colorless, opal white, violet, and partially orange, partially enclosed with precious metal foil. Etched and engraved decoration, three applied flying butterflies in a tree landscape. Partially reworked with the wheel using the Martelé technique. Sign: Galle (engraved).
Cf. Ader-Picard-Tajan, Très important ensemble de Verrerie, Tokyo 1990, No. 55.
€ 5.000 - 6.000



50



54



55



57



58

50
Etablissements Gallé, Nancy
Tall planter 'Hortensias', c. 1900
 H. 44 cm. Cased glass, colorless, milk white, salmon pink, violet, and green. Etched interior and exterior decoration with blooming hydrangeas. Signed: Gallé (raised).
€ 1.400 - 2.200

51
Emile Gallé
Bowl 'Iris', 1903
 H. 12 cm. Cased glass, colorless, violet, and amber. Etched decoration with irises. Signed: Gallé (raised, Japanese style) on one leaf.
€ 800 - 900

54
Etablissements Gallé, Nancy
Tall Vase 'Primevères', 1905-08
 H. 44 cm. Cased glass, colorless, light blue, violet, and green-brown. Etched decoration with primroses. Signed: Gallé (raised).
€ 700 - 900

57
Etablissements Gallé, Nancy
Bowl 'Papillons', 1908-20
 H. 7 cm, Ø 13 cm. Cased glass, colorless, amber-brown, opal-white, and brown. Signed: Gallé (raised).
€ 1.200 - 1.600

60
Etablissements Gallé, Nancy
Small Vase 'Mûres', 1920-36
 H. 18.6 cm. Cased glass, colorless, white, orange, and olive green. Etched decoration with blackberries. Signed: Gallé (raised).
 Image online.
€ 400 - 500



51

52
Etablissements Gallé, Nancy
Small Vase 'Hortensias', 1905-08
 H. 6.9 cm. Cased glass, colorless, milk white, salmon pink, violet, and green. Etched decoration with blooming hydrangeas. Signed: Gallé with asterisk (raised).
 Image online.
€ 280 - 360

53
Etablissements Gallé, Nancy
Small Vase 'Mauves', 1905-08
 H. 10 cm. Cased glass, colorless, opal white, and orange. Etched decoration with blooming mallows. Signed: Gallé with asterisk (raised).
 Image online.
€ 280 - 360

55
Etablissements Gallé, Nancy
Vase 'Chardons', 1908-20
 H. 36.5 cm. Cased glass, salmon pink, colorless, and green. Matt-etched decoration with thistle blossoms. Signed: Gallé (raised). Remains of a paper label on the bottom.
€ 800 - 900

56
Etablissements Gallé, Nancy
Small Vase 'Chardons', 1908-20
 H. 6.2 cm. Cased glass, salmon pink, colorless, and green. Matt-etched decoration with thistle blossoms. Signed: Gallé (raised).
 Image online.
€ 280 - 360

58
Etablissements Gallé, Nancy
Bowl 'Renoncules', 1908-20
 H. 11.5 cm, Ø 20 cm. Cased glass, colorless, yellow, and violet-blue. Etched decoration with ranunculus in a nocturnal setting. Signed: Gallé (raised).
€ 500 - 600

59
Etablissements Gallé, Nancy
Soliflor 'Campanules', 1920-36
 H. 17 cm. Cased glass, colorless, yellowish-green, and brown. Etched decoration with bellflowers. Signed: Gallé (raised).
 Image online.
€ 360 - 400

61
Etablissements Gallé, Nancy
Vase 'Chrysanthèmes', 1920-36
 H. 33.5 cm. Cased glass, light amber, colorless, and reddish-brown. Etched decoration depicting chrysanthemums in the light of the evening sun. Signed: Gallé (raised).
€ 1.000 - 1.400



61



62
Etablissements Gallé, Nancy
Tall vase, 1920s
H. 36.5 cm. Cased glass, colorless, opal white, and amber brown, this layer cracked into large craquelure by quenching. Signed in the center of the body: GALLÉ (etched). Foot polished.
Klesse/Mayr, Funke-Kaiser Glass Collection, Cologne 1981, no. 207; Hilschenz-Mlynek/Ricke, Hentrich Glass Collection, Kunstmuseum Düsseldorf, Munich 1985, no. 375.
€ 3.000 - 3.800



63
Etablissements Gallé, Nancy
Ceiling light 'Papillons', 1925-36
H. 85 cm (approx.), Ø 44.5 cm. Cased glass, colorless, amber-brown, opal white, and brown. Signed: Gallé (raised). Bronze rods with additional butterflies.
Chip to one corner (mounting).
€ 3.000 - 3.800

64

René Lalique
Vase 'Perruches', 1919

H. 26 cm. Execution: René Lalique, Wingen-sur-Moder, before 1947. Sapphire-blue, mold-blown glass. Decorated with budgies perched on flowering branches. Bottom marked: R. LALIQUE (recessed).
Marcilhac, René Lalique, Paris 2011, No. 876.
€ 16.000 - 20.000



65

René Lalique
Vase 'Milan', 1929

H. 28 cm. Execution: René Lalique, Wingen-sur-Moder, before 1947. Clear pressed glass with relief leaf decoration. Signed: R. Lalique France No. 1025 (engraved).
€ 1.200 - 1.600



66

René Lalique
Paperweight 'Deux Aigles', 1914

H. 7.7 x 10.4 x 7 cm. Execution: Lalique, Wingen-sur-Moder. Pressed glass, colorless, with a gray patinated finish. Marked on the side: R.LALIQUE (embossed and rubbed in black).
€ 900 - 1.200

67

René Lalique
Figure 'Sirène', 1920

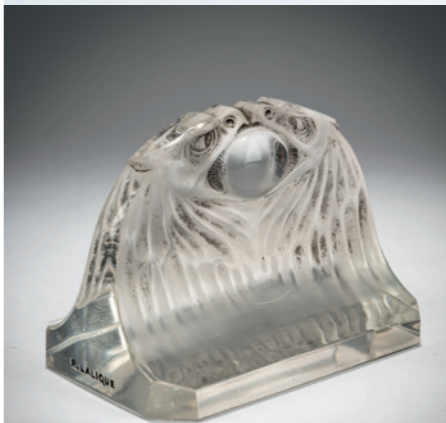
H. 10 cm. Execution: René Lalique, Wingen-sur-Moder, before 1947. Colorless and opalescent white glass. Signed: R. LALIQUE (cast with the piece), bottom: France (engraved).
€ 1.200 - 1.400

65

68

René Lalique
Bowl (coupe refermée) 'Ondines', 1921

H. 7.5 cm, Ø 19 cm. Execution: René Lalique, Wingen-sur-Moder, before 1947. Colorless pressed glass, opalescent. Signed: R. LALIQUE (cast with the glass).
€ 1.000 - 1.200



66

69

René Lalique
Two bowls (coupe fermée) 'Coquille No. 1', 1924

H. 9.2 cm, Ø 24 cm. Execution: René Lalique, Wingen-sur-Moder, before 1947. Colorless pressed glass, slightly opalescent. Signed: R. LALIQUE FRANCE No. 3200 (engraved).
€ 600 - 700



67



68



69



70
René Lalique
Two plates 'Coquille N. 1', 1924
 Ø 29.8 cm. Execution: René Lalique, Wingen-sur-Moder, before 1947. Colorless pressed glass, slightly opalescent. Signed: R. LALIQUE FRANCE, No. 3009.
 € 800 - 900

71
René Lalique
Vase 'Eucalyptus', 1925
 H. 16.4 cm. Execution: René Lalique, Wingen-sur-Moder, before 1947. Clear pressed glass with a green patinated finish. Signed: R. LALIQUE (in relief).
 € 1.200 - 1.400

72
René Lalique
Vase 'Rampillon', 1927
 H. 12.6 cm. Execution: René Lalique, Wingen-sur-Moder, before 1947. Colorless pressed glass, opalescent. Signed: R. LALIQUE FRANCE, No. 991 (engraved).
 € 1.000 - 1.200

73
René Lalique
Bowl 'Nemours', 1929
 H. 9.9 cm, Ø 25.5 cm. Execution: René Lalique, Wingen-sur-Moder. Colorless pressed glass, partially satin-finished, black enamel. Signed: R. LALIQUE FRANCE (cast with the glass).
 € 500 - 600

74
René Lalique
Vase 'Saint-François', 1930
 H. 18 cm. Execution: René Lalique, Wingen-sur-Moder. Clear pressed glass, satin-finished. Bottom signed: R. LALIQUE FRANCE (sandblasted).
 € 1.200 - 1.600

75
René Lalique
2 bowls (coupe plate) 'Actinia', 1933
 Ø 27.5 cm. Execution: René Lalique, Wingen-sur-Moder, before 1947. Colorless molded glass, opalescent. Signed: R. LALIQUE FRANCE (sandblasted).
 € 700 - 800



72

73

74



76
Legras & Cie., Saint-Denis
Tall 'Aquatique' Vase, 1910-15
 H. 53.5 cm. Cased glass, cream-colored and colorless, with burgundy and green enamel overlays. Etched decoration with underwater scenery. Signed: Legras (raised).
 € 2.000 - 3.000

77
Muller Frères, Lunéville
Vase 'Iris', 1910-15
 H. 23.6 cm. Cased glass, colorless, milk white, pink, and blue. Etched decoration with irises on a rough background. Signed: MULLER FRES LUNEVILLE (raised).
 € 600 - 700

78
Muller Frères, Lunéville
'Intercalaire' Vase, 1930s
 H. 20 cm. Colorless glass, encased precious metal salts and foils. Bottom signed: MULLER FRES LUNEVILLE (engraved). Image online.
 € 180 - 200



76



79

79
Schneider, Epinay-sur-Seine
Miniature vase, 1918-20

H. 6.4 cm. Colorless glass, vanilla-yellow powder inclusions, green threads, and red spots. Not signed.
 € 900 - 1.200

80
Schneider, Epinay-sur-Seine
Table light 'Roses sauvages', 1918-21

H. 52 cm, Ø 28.5 cm. Cased glass, colorless, with pink and green enamel overlays. Etched decoration with blooming rose branches. Wrought iron mount.
 Joulin/Maier, Charles Schneider, Augsburg 2004, p. 92.
 € 3.000 - 3.800

81
Schneider, Epinay-sur-Seine
Vase 'Coqueret', 1919-21

H. 45 cm. Cased glass, colorless, with lemon-yellow powder inclusions, orange and dark green enamel. Etched decoration with cape gooseberry. Signed: Tricolore thread for Le Verre Français.
 € 1.400 - 1.800



80



81



82

82
Schneider, Epinay-sur-Seine
Tall Vase 'Monnaie du Pape', 1919-21

H. 44.5 cm. Cased glass, colorless, with orange powder inclusions and powder fusions in olive green, orange, and brown. Etched decoration with pope's money on a rough background. Tricolor thread (for: Le Verre Français) is fused to the base.
 Joulin/Maier, Charles Schneider, Augsburg 2004, p. 96.
 € 2.000 - 2.600

83
Schneider, Epinay-sur-Seine
Vase 'Monnaie du Pape', 1919-21

H. 39.5 cm. Cased glass, colorless, with orange powder inclusions and powder fusions in olive green, orange, and brown. Etched decoration with pope's money on a rough background. Base signed: Le Verre Français (needle etching).
 € 1.800 - 2.200



84



83

84
Schneider, Epinay-sur-Seine
Vase 'Monnaie du Pape', 1919-21

H. 20.5 cm. Cased glass, colorless, with orange powder inclusions and powder fusions in olive green, orange, and brown. Etched decoration with pope's money on a rough background. Tricolor thread (for: Le Verre Français) is fused to the base.
 € 1.800 - 2.200

85
Schneider, Epinay-sur-Seine
Centerpiece 'Monnaie du Pape', 1919-21

H. 17 cm, Ø 31 cm. Cased glass, colorless, with orange powder inclusions and powder fusions in olive green, orange, and brown. Etched decoration with pope's money on a rough background. Tricolor thread (for: Le Verre Français) is fused to the base. Bottom with Moulot Marseille distribution label.
 € 1.500 - 1.800



85



86

86
Schneider, Epinay-sur-Seine
'Vase bijou', 1922-25

H. 8.2 cm. Glass, colorless and uranium-yellow, violet band fusion with red enamel cabochons. Violet base. Signed: Schneider France (sandblasted).
€ 900 - 1.200

87
Schneider, Epinay-sur-Seine
Vase 'Marrons', 1922-25

H. 48 cm. Cased glass, colorless with white, yellow, and orange powder inclusions, dark violet enamel fused with green. Etched decoration with chestnuts. Signed: Le Verre Français (needle etching).
€ 1.400 - 1.800

88
Schneider, Epinay-sur-Seine
Small Vase 'Lézards', 1922-25

H. 15.3 cm. Cased glass, colorless with yellow powder inclusions, orange and brown enamel fusions. Etched decoration with three lizards and numerous dragonflies. Foot signed: Le Verre Français (needle etching).
 Joulin/Maier, Charles Schneider, Munich 2020, p. 109.
€ 2.000 - 3.000



87



88



89

89
Schneider, Epinay-sur-Seine
'Coupe Bijou', 1922-26

H. 19.5 cm. Glass, violet and orange powder inclusions, frosted, three applied cabochons. Foot signed: Schneider (gold signature).
€ 900 - 1.200

90
Schneider, Epinay-sur-Seine
'Coupe Bijou', 1922-26

H. 16.7 cm. Colorless glass, powder fusion and inclusion in violet, orange, dark blue, and white. Foot signed: Schneider (gold signature).
€ 900 - 1.200



90

91
Schneider, Epinay-sur-Seine
'Coupe Bijou', 1922-26

H. 20 cm. Colorless glass, powder inclusions in dark blue, orange, and violet, three applied cabochons. Foot signed: Schneider (gold signature).
€ 600 - 800

92
Schneider, Epinay-sur-Seine
'Dahlias' goblet, 1923-26

H. 17.8 cm. Cased glass, colorless with pink powder inclusions, light and dark violet enamel fusions. Etched decoration with dahlias. Foot signed: Le Verre Français (needle etching).
€ 500 - 700



91

93
Schneider, Epinay-sur-Seine
Vase 'Dahlias', 1923-26

H. 35 cm. Cased glass, colorless with pink powder inclusions, light and dark violet enamel fusions. Etched decoration with dahlias. Foot signed: Le Verre Français (needle etching).
€ 1.400 - 1.800

94
Schneider, Epinay-sur-Seine
Tall Vase 'Groseilles', 1923-26

H. 31 cm. Cased glass, colorless, with lemon-yellow powder inclusions. Enamel fused in orange and violet. Etched decoration depicting currants. Signed: Le Verre Français (needle etching).
€ 700 - 900



92



93



94



96



98



97



99

95
Schneider, Epinay-sur-Seine
Small Vase 'Groseilles', 1923-26
H. 12 cm. Cased glass, colorless, with lemon-yellow powder inclusions. Enamel fused in orange and violet. Etched decoration with currants. Signed: Le Verre Français (needle etching).
Image online.
€ 400 - 500

96
Schneider, Epinay-sur-Seine
Vase 'Groseilles', 1923-36
H. 18.3 cm, Ø 19 cm. Cased glass, colorless, with lemon-yellow powder inclusions. Enamel fused in orange and violet. Etched decoration with currants. Signed: Le Verre Français (needle etching).
€ 500 - 700

97
Schneider, Epinay-sur-Seine
Vase 'Chênes', 1923-27
H. 32 cm. Cased glass, colorless with red and yellow powder inclusions, brown enamel. Etched decoration with stylized leaf motifs. Signed: Le Verre Français (needle etching).
€ 1.000 - 1.400

98
Schneider, Epinay-sur-Seine
Bowl with handles 'Chardons', 1924-27
H. 8.8 cm, 33.5 x 29 cm. Colorless glass, whitish and orange powder inclusions, violet powder fusions. Etched decoration with stylized thistles. Signed: Le Verre Français (needle etching), France (engraved).
€ 900 - 1.200

99
Schneider, Epinay-sur-Seine
Vase 'Perlières', 1924-27
H. 37.5 cm. Cased glass, colorless with yellow and reddish powder inclusions, violet enamel fusion. Etched decoration with berry tendrils. Body signed: Charder (raised), foot: Le Verre Français (needle etching).
€ 1.200 - 1.400

100
Schneider, Epinay-sur-Seine
'Coprins' vase, 1923-26
H. 21 cm. Cased glass, colorless, with lemon yellow and green powder inclusions, seal red and dark violet enamel fusions. Etched decoration depicting mushrooms. Signed: Le Verre Français (needle etching).
€ 900 - 1.200

101
Schneider, Epinay-sur-Seine
Vase 'Myrtilles', 1927-28
H. 17.8 cm. Cased glass, colorless, white, blue, and pink powder inclusions, cobalt blue enamel fusions, etched decoration with stylized blueberries. Body signed: Charder (raised), foot: Le Verre Français (needle etching).
€ 800 - 900

102
Schneider, Epinay-sur-Seine
Centerpiece 'Pivoines', 1927-28
H. 12 cm, Ø 22 cm. Cased glass, colorless with yellow and orange powder inclusions, orange and violet enamel fusions. Etched decoration with peonies. Body signed: Charder (raised); foot: Le Verre Français (needle etching).
€ 1.000 - 1.400



100



101



102



103

103
Schneider, Epinay-sur-Seine
Centerpiece 'Vigne', 1927-28

H. 11.5 cm, Ø 18 cm. Colorless glass with yellow powder inclusions, brown and orange enamel inclusions, neck marbled brown. Etched decoration with stylized grapes. Body signed: Charder (raised), foot: Le Verre Français (needle etching).
€ 800 - 900



104

104
Schneider, Epinay-sur-Seine
Vase 'Roses trémières' 1927-28

H. 27 cm. Cased glass, colorless with orange powder inclusions, yellow, orange-flecked fusion with etched hollyhock decoration. Dark purple base. Foot signed: Le Verre Français (needle etching).
€ 900 - 1.200



105

105
Schneider, Epinay-sur-Seine
Vase 'Giroflées', 1927-28

H. 18.4 cm, Ø 14.5 cm. Cased glass, colorless, with white, violet, and yellow powder inclusions, and violet and blue enamel fusions. Etched decoration with stylized wallflowers. Body signed: Charder (raised), foot: Le Verre Français (needle etching).
€ 1.200 - 1.400

106
Schneider, Epinay-sur-Seine
Vase, c. 1930

H. 19 cm. Orange glass. Etched volutes decoration. Stand signed: Charder, Le Verre Français (needle etching).
€ 700 - 900

107
Schneider, Epinay-sur-Seine
Table light with bronze base by Charles Ranc, c. 1925

H. 38.5 cm. Cased glass, colorless, with white, orange, and dark blue powder inclusions, matted. Signed: SCHNEIDER (sandblasted). Bronze base. Signed: C. Ranc (embossed).
€ 700 - 800



107



106



108

108
Louis Léon Ledru
Vase 'Orchidées', 1906/07

H. 39.5 cm. Execution: Henri and Désiré Muller for Cristalleries du Val-Saint-Lambert, Seraing-sur-Meuse. Cased glass, colorless, opal white, light and dark brown. Etched decoration with blooming orchids, partially painted brownish, so-called 'fluogravure' decoration. Signed: VSL (raised).
€ 2.000 - 3.000



109

109
Verreries réunies de Vallerysthal et Portieux
Vase 'Vigne', 1895-1900

H. 14 cm. Cased glass, colorless and green. Etched, enameled, and heightened with gold. Decoration with vine leaves and grapes. Bottom signed: Vallerysthal (gold signature) on the base.
€ 750 - 850



110

110
Verreries réunies de Vallerysthal et Portieux
Tall vase 'Chardons', c. 1900

H. 15 cm. Cased glass, colorless and pink. Etched thistle decoration heightened with gold. Bottom signed: Vallerysthal (engraved).
€ 550 - 650



112

111
Glasfabrik Elisabeth, Pallme-König & Habel, Košťany u Teplic Inkwell, 1900-09

H. 8 cm. Deep blue glass, fused threads, deep petrol matte luster. Hinged brass lid with leaf decoration. Image online.
€ 350 - 450

112
Harrach, Nový Svět Vase, c. 1904

H. 25.2 cm. Green and violet glass. Carved floral decoration.
€ 500 - 600

113
Loetz, Klastersky Mlyn Flower-shaped vase, c. 1890

H. 17.3 cm. Glass, colorless and lemon yellow.
€ 700 - 800

114
Loetz, Klastersky Mlyn Rose water sprinkler 'creta Papillon', 1898-1900

H. 23.5 cm. Green glass with rolled-in flakes of silver-yellow, 'creta Papillon', green and pearlescent matte luster.
€ 700 - 800

115
Loetz, Klastersky Mlyn Two miniature vases 'creta Papillon', 1898-1900

H. 5.4-5.5 cm. Green glass with rolled-in flakes of silver-yellow, 'creta Papillon', green and pearlescent matte luster. Image online.
€ 400 - 600

116
Loetz, Klastersky Mlyn 'Papillon' Vase, 1898-1900

H. 12.5 cm. Yellow glass with rolled-in silver-yellow crushed glass 'candia Papillon', matte gold and pearlescent luster.
€ 700 - 800



114



117

117
Loetz, Klastersky Mlyn Tall 'Papillon' Vase, 1898-1900

H. 45 cm. Yellow glass with rolled-in silver-yellow flakes, 'candia Papillon', matte gold and pearlescent luster.
€ 900 - 1.200

118
Loetz, Klastersky Mlyn 'Papillon' Vase, 1898-1900

H. 10 cm. Green glass with rolled-in silver-yellow flakes, 'creta Papillon', matte gold and pearlescent luster. Image online.
€ 350 - 450

119
Loetz, Klastersky Mlyn 'Papillon' Vase, 1898-1900

H. 24 cm. Dark red glass with rolled-in flakes of silver-yellow, 'cobalt Papillon', and petrol and pearlescent matt luster.
€ 800 - 1.000

120
Loetz, Klastersky Mlyn Two 'Papillon' vases with silver overlay, 1898-1900

H. 18.6 cm. Blue glass with rolled-in flakes in silver-yellow, 'cobalt Papillon', and a matte petrol and pearlescent luster. Silver overlay with dandelion decoration. Bottoms marked: M 389, 7870 (enameled).
€ 2.000 - 2.600



119



120



113



116



121
Loetz, Klastersky Mlyn
'Phänomen' Vase with Silver-Overlay, c. 1900

H. 12.2 cm. Cased glass, ruby red and colorless, with a ribbed pattern of warped silver-yellow threads, similar to cobalt Phänomen Gre 6893, with a strong pearlescent matte luster.
€ 700 - 800

122
Loetz, Klastersky Mlyn
'Phänomen' vase, c. 1900

H. 19 cm. Light green, opalescent glass, with blue flecks of melted glass on the lower part, pearlescent matte finish. Signed: Loetz Austria (engraved) on the ground pontil.
€ 500 - 600

123
Loetz, Klastersky Mlyn
Small 'Papillon' vase with silver overlay, 1898-1900

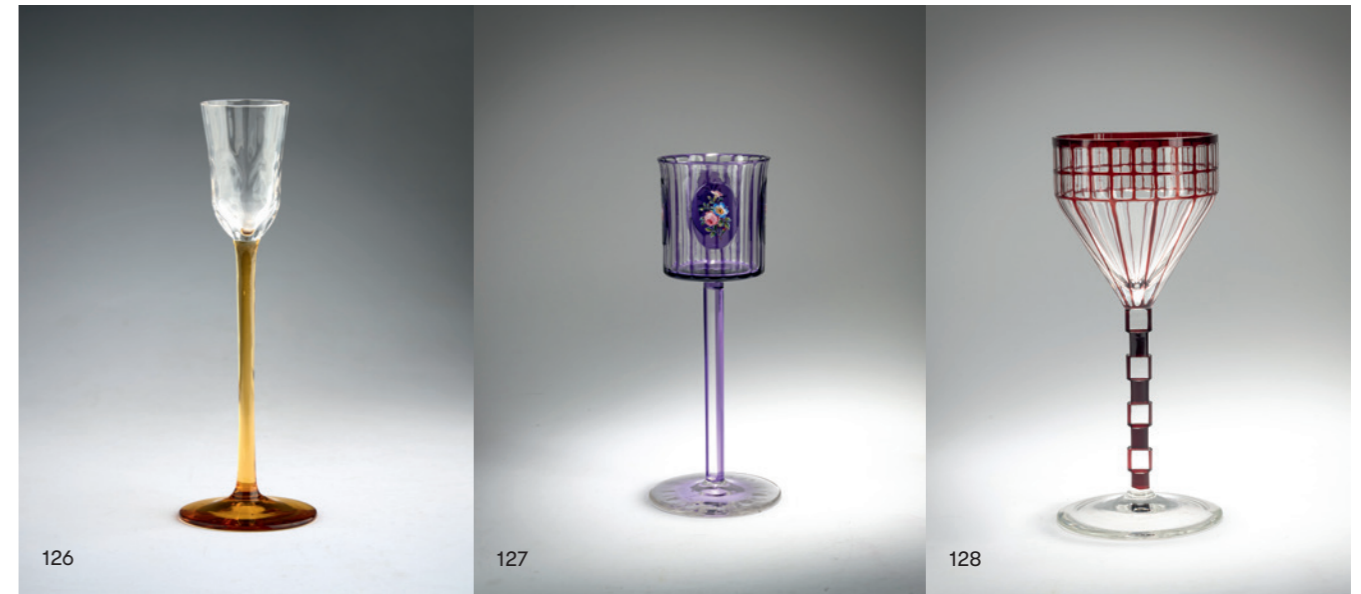
H. 10 cm. Green glass with crushed glass in silver-yellow, 'creta Papillon', green and pearlescent matte luster. Silver overlay with clover leaves. Image online.
€ 440 - 540

124
Loetz, Klastersky Mlyn
Table light, 1923-25

H. 68.5 cm, Ø 44 cm. Cased glass, colorless and violet. Etched decoration with blossoms and leaves. Signed: Richard (raised). Gilded bronze mount and fabric shade. Fabric shade with tears.
€ 800 - 1.000



124



125
Loetz, Klastersky Mlyn
Footed vase 'Feathers', 1925

H. 21.8 cm. Cased glass, colorless and milk green, with silver-yellow threads in the lower half, combed in stripes.
€ 500 - 600

126
Koloman Moser
'Meteor' liqueur glass, c. 1900

H. 15 cm. Execution: Meyr's Neffe, Adolf. Amber-brown and colorless glass, bowl optically blown.
€ 300 - 400

127
Meyr's Neffe, Adolf
Stem glass, c. 1908

H. 20.5 cm. Colorless and violet glass with cut stripes. Four medallions with enameled floral bouquets. Olive- and ball-cut base.
€ 400 - 500

128
Otto Prutscher (STYLE)
Stem glass, c. 1908

H. 18.8 cm. Glass, colorless and ruby red, cut.
€ 600 - 700

129
Josef Hoffmann, Felice Rix-Ueno
'Bowl', c. 1921

H. 15 cm, Ø 16.5 cm. Execution: Johann Oertel & Co., Novy Bor. Colorless glass, matte-ground, polychrome enameled, and heightened with black solder. Unmarked. mak.at, MAK Inv.nr. WWF 90-84-5.
€ 1.500 - 2.000

130
Vienna
Cup vase, c. 1920

H. 26.3 cm, Ø 18.8 cm. Colorless glass, polychrome enamel decoration. Unsigned. Image online.
€ 200 - 300



129



131



132

131
Fritz Heckert, Piechowice
Vase 'Dragonflies', after 1900

H. 16.2 cm. Colorless glass, slightly iridescent. Polychrome enamel decoration depicting two dragonflies over a meadow.
€ 360 - 440

132
Ferdinand von Poschinger, Buchenau (ATTR.)
Small vase with silver overlay, 1900-05

H. 9 cm. Cased glass, colorless and blue, with a pearlescent matte luster. Cartouche decoration in silver overlay.
€ 300 - 400

133
Ludwig Sütterlin
Vase, c. 1901

H. 25.5 cm. Execution: Fritz Heckert, Piechowice. 'Cyperus' glass, blue, pearlescent, and petrol-colored luster, violet enamel, and powder gold.
€ 600 - 700



133



134



135



136



137

134
Louis C. Tiffany
Small 'Favrile' bowl, c. 1892

H. 7.3 cm, Ø 15.5 cm. Blue, so-called 'Favrile' glass, with a matte petrol luster. Bottom marked: X 184 LCT Favrile (engraved).
€ 400 - 500

135
Louis C. Tiffany
Small 'Favrile' Vase, 1894

H. 10.8 cm. Cased glass, colorless, opal white, and yellow, with combed, silver-yellow bands, pearlescent matte luster. Bottom marked: LCT B 1528 (engraved).
€ 550 - 650

136
Louis C. Tiffany
Miniature 'Favrile'-Vase, 1901

H. 6.1 cm. Colorless, green, and opal-white glass, with silver-yellow threads combed down from the lip, matte gold and pearlescent luster. Bottom marked: LCT, O 5185 (engraved).
€ 450 - 550

137
Louis C. Tiffany
Wide 'Favrile' bowl, 1916

H. 12.2 cm, Ø 25.7 cm. Amber-yellow, so-called 'Favrile' glass, with a matte gold luster. Bottom marked: 8916 KL c. Tiffany-Favrile (engraved).
€ 600 - 800



138

138
Ludwig Hohlwein
Poster 'Wilhelm Mozer', 1909

Color lithograph on paper. 111.8 x 79.8 cm (image), 125 x 91 cm (sheet size). Printed by Vereinigte Druckereien & Kunstanstalten GmbH (G. Schuh & Cie.), Munich, Herrnstrasse 35. Signed and dated on the right side of the print: LUDWIG HOHLWEIN 09. The telephone number has been corrected with a affixed paper label with the number '6' in hollow vine script. From the Bantele Collection. Paper is creased, edges have small tears and two holes, and the lower right corners are torn. A water stain at the top center on the verso, and rubbed on the bottom.
€ 600 - 700



139

139
Ludwig Hohlwein
Poster 'Spaten-Bräu Munich', 1933

Color offset on paper. 117 x 82 cm. Signed upper left: LUDWIG HOHLWEIN MUNICH. Typographically inscribed lower right: KUNST IM DRUCK OBPACHER AG MUNICH 25. Framed under glass. Not deframed. Light discoloration to the edges, stains, especially on the lower left margin, and creases.
€ 1.500 - 1.800

140
Erminio Kremp
Female Figure with Two Swans by the Water, c. 1900

Oil on canvas. 72.5 x 125.0 cm (canvas), 95.5 x 146.5 cm (frame). Signed lower right: E. Kremp and place name: Palermo (oil). Framed. Not de-framed.
€ 1.500 - 2.500



140



141
Alphonse Mucha
'Les Saisons', 1896

'Printemps', 'Eté', 'Automne', 'Hiver'. Color lithograph on paper, mounted on cardboard. Sheet: 104.5 x 54.4 cm; plates vary: 99 x 51.3 - 99.8 x 52 cm. Each plate signed lower right: Mucha. Each framed with glass. Not de-framed. Rennert/Weil, Alphonse Mucha. The complete posters and panels, Uppsala 1984, S. 90 ff.
€ 24.000 - 28.000

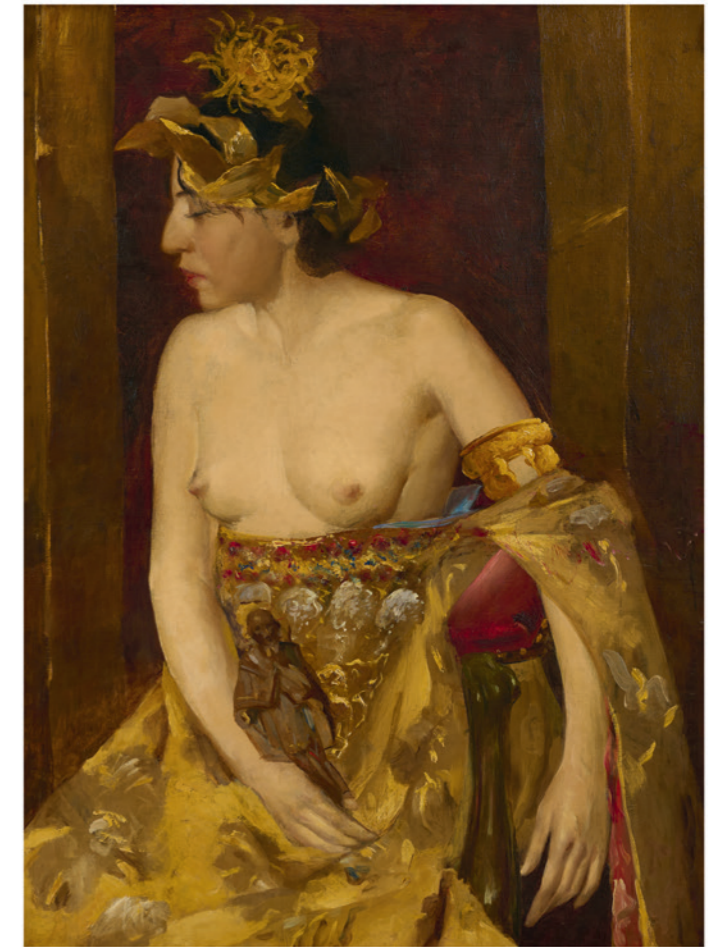


142
Alphonse Mucha
Study for a poster, 'Rubies' from the 'Precious Stones' series, 1900
 Pastel on paper. 76.3 x 30.2 (depiction), 78 x 36 (sheet).
 Signed lower right: Mucha. Framed under glass.
 Top left and bottom right losses in the paper (the image is not affected).
 Cf. Rennert/Weil, Alphonse Mucha. The complete posters and panels, Uppsala 1984, p. 267.
€ 12.000 - 20.000



143

143
Ludwig von Zumbusch
Lute player, c. 1900
 Oil on cardboard. 31 x 24 cm. Signed upper left: L. v. Zumbusch. Gold frame: 51 x 44 cm.
 With "Fröhliche Kindheit" Ein Bilderbuch von Ludwig von Zumbusch Text von Fritz von Ostini, Munich 1921.
€ 800 - 1.200



144

144
Paul Albert Besnard
Actress, c. 1900
 Oil on canvas. 100 x 75 cm (stretcher frame). Unsigned. Framers' stamp on the verso, remnants of a gallery label. Neoclassical-inspired gold frame, 118 x 92.5 cm.
€ 5.000 - 6.000

145
G. Bazzoni
'Uruguay' poster, c. 1935
 Lithograph on paper. 90 x 60 cm. Signed in the plate. Marked lower left: COLOMBINO HERMANOS.
 Corners and pages slightly dented, creases, only short tears.
€ 700 - 800



145



146
Emile Gallé
Side table 'Libellules', 1900

A six-sided, slightly trapezoidal tabletop with a lake landscape with hovering dragonfly on three feet in the form of elaborately carved, sculptural dragonflies. A second, three-sided, fitted top with water lily decoration. H. 77 cm, Ø 66 cm. Walnut, marquetry in various woods. Signed: E. Gallé with the inlaid Cross of Lorraine.

Designed for the World Exhibition in Paris in 1900.

The table was examined in 2024 by a state-certified restorer working for public museums, who confirmed that it is still in its original condition.

Provenance: Government Councilor Dr. Jur. Eberhard Hörstel (1870-1932), the former owner of the "Salve Hospes" villa in Braunschweig (built 1805-1808, now the seat of the Braunschweig Art Association), acquired the 'Libellules' side table by Emile Gallé in the early 20th century. His daughter, dancer and actress Sonja Leströh (1909-1992), bequeathed most of the interior furnishings to her adopted daughter, the mother of the current owners.

Duncan, *The Paris Salons*, Vol. III, Woodbridge 1996, p. 225; Cat. Nancy 1900, Munich City Museum, Mainz 1980, pp. 312 f.; Forster/Panchaud, *Radikal schön, Jugendstil und Symbolismus*, Wiesbaden 2019, p. 489, M 30.

€ 30.000 - 40.000





147

147
Louis Hestaux
Relief 'Vol d'oisies sur la forêt', c. 1890

Three geese flying over the treetops. 46 x 81 cm, with frame: 62 x 97.5 cm. Carved fruitwood with polychrome paint. Colorless enamel on bluish precious metal foil. Signed lower left: Hestaux. Carved oak frame. Handwritten label on the verso: MUSÉE DES ARTS DECORATIFS EXPOSITION 1932, Corbin. Second label with the artist's address and the name of the work. Provenance: formerly Dr. Helmut Hentrich, now a private collection in southern Germany. Minor superficial abrasions and scratches (especially on the frame), enamel with cracks. Louis Hestaux was head of the decoration workshops at Emile Gallé, Nancy. **€ 2.000 - 2.500**

148
Nancy
Extendable tea table 'Marrons', c. 1900

H. 67 cm, 70-105 x 46.5 cm. Carved walnut, inlaid with various fruitwoods. Unsigned. Image online. **€ 500 - 700**

149
Louis Majorelle, Nancy
Two chairs 'Branches d'Olive', c. 1900-08

H. 91.5 cm, 46 x 50 cm. Carved walnut, inlaid with various precious woods. Floral silk fabric. Marked: L. Majorelle (embossed and blackened). Duncan, Louis Majorelle, Munich 1991, p. 164. **€ 800 - 1.200**



149



150

150
Emile Gallé, Nancy
Hanging cabinet 'Ombellifères', c. 1900

H. 100 cm, 125.5 x 28 cm. Carved walnut, marquetry in various woods. Floral decor with butterflies. Signed: Gallé (inlaid). **€ 3.000 - 5.000**

151
J.&J. Kohn, Vienna
Shoe lacing stand, c. 1900

H. 29.5 cm, 40 x 25 cm. Bent beechwood, laminated wood, stained mahogany. From the Bantele Collection. Image online. **€ 200 - 300**

152
England (attributed)
Jumping Jack, last quarter of the 19th century

H. 32.5 cm. Carved wood, polychrome paint. Image online. **€ 340 - 440**

153
Vienna
Wall mirror, c. 1950

40.5 x 34 cm. Wood, gilded, mirrored glass. **€ 500 - 600**



153

154

**Franz Barwig
Fighting Capricorn, 1911**

H. 53.5 cm. Bronze, dark brown patina. Plinth monogrammed: FB (embossed). Fighting Capricorn, Belvedere Museum, Vienna, inv. no. 1993; Die Kunst für alle, No. 28/1913, ill. P. 287; Frodl (ed.), Franz Barwig 1868–1931, Austrian Gallery, Vienna 1969, Fig. 13; Husslein-Arco / Fellingner (ed.), Franz Barwig der Ältere, Österreichische Galerie Belvedere Vienna, 2014, ill. Pp. 35 and 141.

€ 4.000 - 5.000

155

**Albert Ernest Carrier-Belleuse
Bust of a young woman, c. 1865**

H. 57 cm. Terracotta. Brown glazed plinth. Signed on the back: A. CARRIER BELLEUSE (incised). Collection label. Ebonized wooden base, turned. Provenance: From the collection of Maria and Hans-Jürgen Heuser, Hamburg, no. 6110. The present bust, possibly a portrait of an actress, is related both in execution and in size to other female busts (probably allegories of the seasons), the first in the Musée d'Orsay, Paris 'Jeune femme au chapeau orné d'épis de blé', another was in the art trade, Washington DC 'Lady winter', with which there are particularly portrait similarities.

€ 3.000 - 4.000



154

**156
Demeter H. Chiparus
'Blé', 1925**

H. 30 cm, 70 x 11.5 cm. Terracotta. Signed in the ears: DH Chiparus (debossed).

Image online.

€ 400 - 600



155

157

**Demeter H. Chiparus
'Dancer of Lebanon', c. 1925**

H. 37.5 cm (total). Cold-painted bronze. Foot marked: 57 (stamped). Base signed: Chiparus (incised).

Shayo, Chiparus, New York 1999, p. 104.

€ 5.500 - 6.500





158

158
Demètre H. Chiparus
Bronze figure 'Chain Dancer' c. 1925

H. 29.5 cm (with base). Cold-painted bronze, metal wire. Base signed: D H. Chiparus (engraved). Brown onyx base. Without chain.
Shayo, Chiparus, New York 1999, p. 102.
€ 4.400 - 5.500

159
Theodor Eichler
Bronze figure 'Der Sklavin Los', 1910

H. 23 cm, H. 29 cm (total). Bronze, partially dark patina. Plinth marked: DER SKLAVIN LOS. Back: Eichler (embossed). Marble base.
€ 1.200 - 1.400

160
France
Bowl with dancer, c. 1928

H. 21.5 cm, Ø 23 cm. Bronze. White alabaster. Not signed.
Image online.
€ 300 - 400



159



161

161
Hagenauer, Vienna
Footed bowl, c. 1930

H. 11 cm, Ø 19.7 cm. Cast brass, polished brass sheet. Not signed. Bottom of the bowl corroded.
€ 1.200 - 1.600

162
Franz Hagenauer
Woman's head, 1960s

H. 50 cm. Execution: Hagenauer Workshops, Vienna. Brass, chrome-plated. Marked: FRANZ (indistinct), MADE IN AUSTRIA, wHw, HAGENAUER VIENNA.
€ 20.000 - 28.000

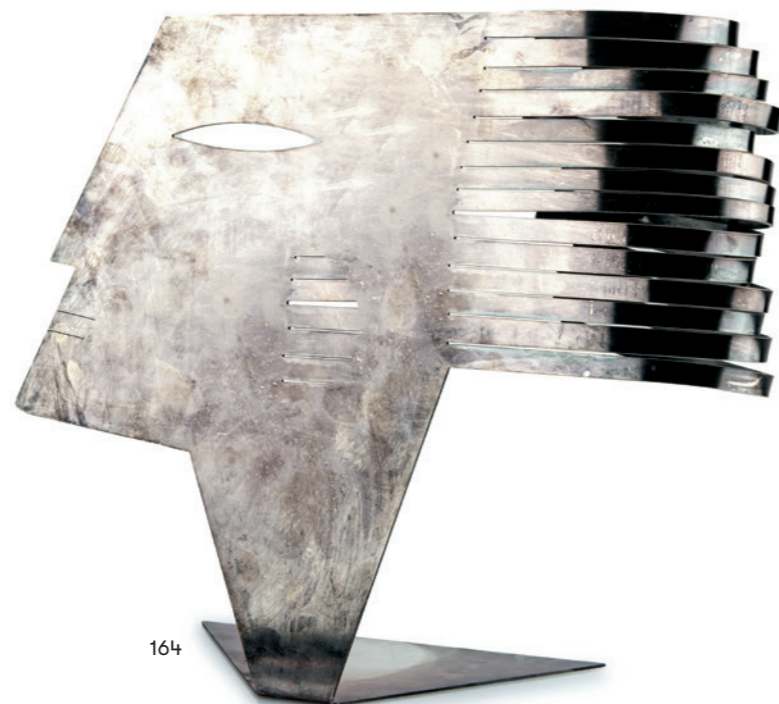


162

163

Hagenauer, Vienna
African dancer, c. 1957

H. 20.5 cm. Brass, black patinated. Marked: HAGENAUER WIEN wHW, MADE IN AUSTRIA, Handmade (stamped). From the Bantele Collection. Image online.
€ 200 - 300



164

164

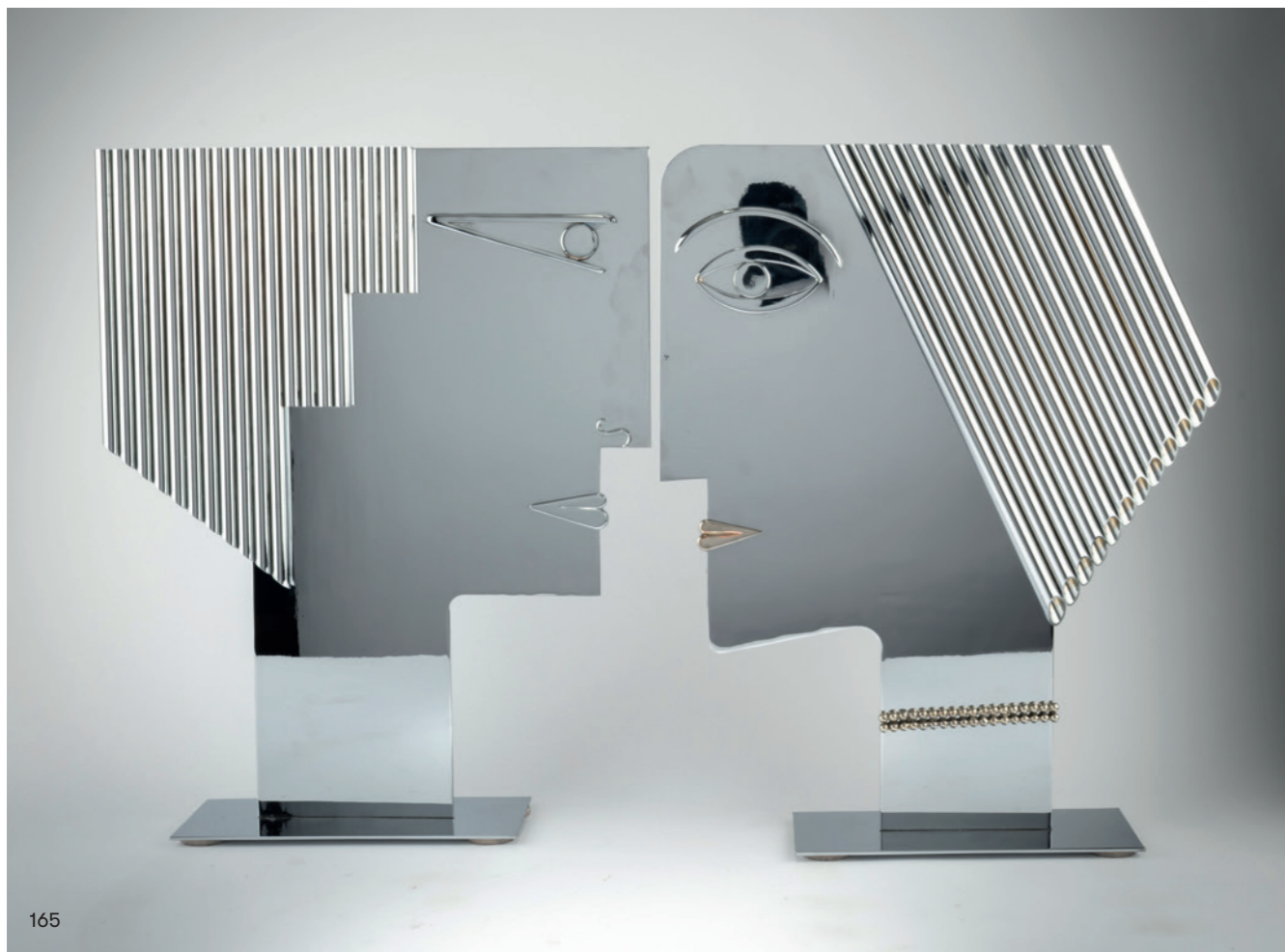
Franz Hagenauer (attributed)
Profile head, c. 1977

30 x 36 x 10 cm. Execution: Hagenauer Workshops, Vienna. Silver-plated brass. Marked: MADE IN AUSTRIA, wHw HAGENAUER (stamped). Cf. MAK Inv.nr. HAF 1034.
€ 6.000 - 8.000

165

Franz Hagenauer
Male and female heads, 1970s

H. 53 x 42 x 10.3 cm. Execution: Hagenauer, Vienna. Nickel-plated brass. Base marked: wHw FRANZ (indistinct). Cf. Edward Art Deco Sculpture and Metalware, Atglen 1996, p. 46; cf. MAK Inv.no. HAF 1102; cf. MAK Inv.no. HAF 1100.
€ 14.000 - 18.000



165

166

Franz Hagenauer
Woman's head, c. 1970

H. 36 cm, Ø 14.7 cm. Execution: Hagenauer Workshops, Vienna. Hammered brass sheet, red enameled mouth. Marked on the neck: FRANZ, HAGENAUER VIENNA, wHw MADE IN AUSTRIA.
€ 20.000 - 28.000





167
Wilhelm Krieger
Alabaster figure 'Sitting Cockatoo',
c. 1925

H. 41 cm. Carved white and gray alabaster, partially painted. The back of the base marked: KRIEGER (incised). Bottom: Signet of Hessische Kunstwerkstätten Altmorschen.
€ 5.000 - 7.000

168
Samuel Lipschytz
Bronze figure 'Dancer with Bird', c.
1925

H. 38 cm (with base). Cold-painted bronze. Gown signed: S. Lipschytz (embossed). Brown marble base. Figure reattached to the base.
€ 1.400 - 1.600



168

169
Josef Lorenzl
'Diana with Dogs', c. 1930

H. 45 cm (total). Bronze, cold-painted. Plinth signed: Lorenzl (stamped). Gray marble base. Catley, Art Deco and other figures, Woodbridge 1998, p. 209.
€ 3.400 - 3.800



167

169



170

170
Josef Lorenzl
Dancer with ball, c. 1930

H. 42 cm. Cold-painted bronze. Plinth signed: Lorenzl (embossed). Brown-white marble base.
€ 2.400 - 2.800



171

171
Ferdinand Preiss
Chryselephantine figure 'Proserpina', before 1914

H. 22.5 cm (total). Bronze, dark patinated and gilded, head with décolleté, arms and visible foot of carved ivory. Base signed: F. Preiss (incised). Red marble base. Shayo, Ferdinand Preiss, Woodbridge 2005, p. 107. An EC certificate has been issued for this lot by the Department for Climate and Environmental Protection of the City of Munich, which allows objects with ivory to be marketed within the European Union.
€ 4.000 - 5.000



172



173



174

172
Ferdinand Preiss
Chryselephantine figure 'Victorian Gentleman',
c. 1922

H. 14.5 cm (total). Cold-painted bronze, head, hands, bouquet, and cane carved from ivory. Base signed: F. Preiss (incised). Red marble base.
 Catley, Art Deco and other figures, Woodbridge 1998, p. 269.
 An EC certificate has been issued for this lot by the Department for Climate and Environmental Protection of the City of Munich, which allows objects with ivory to be marketed within the European Union.
€ 800 - 1.200

173
Ferdinand Preiss
Chryselephantine figure 'Victorian Lady', c. 1922

H. 14.5 cm (total). Cold-painted bronze, head with hat and arms of carved ivory. Base signed: F. Preiss (incised). Red marble base.
 Catley, Art Deco and other figures, Woodbridge 1998, p. 269.
 An EC certificate has been issued for this lot by the Department for Climate and Environmental Protection of the City of Munich, which allows objects with ivory to be marketed within the European Union.
€ 800 - 1.200

174
Ferdinand Preiss
Chryselephantine figure 'Pierrette', c. 1925

H. 18.1 cm (total). Cold-painted bronze. Head and arms of carved ivory. Plinth signed: F. Preiss, Preiss & Kassler signet. Onyx base. Rubbings on the hat.
 Catley, Art Deco and other figures, Woodbridge 1998, p. 268.
 An EC certificate has been issued for this lot by the Department for Climate and Environmental Protection of the City of Munich, which allows objects with ivory to be marketed within the European Union.
€ 2.000 - 3.000

175
Ferdinand Preiss
Ivory figure 'Ecstasy' on a bowl, c. 1925

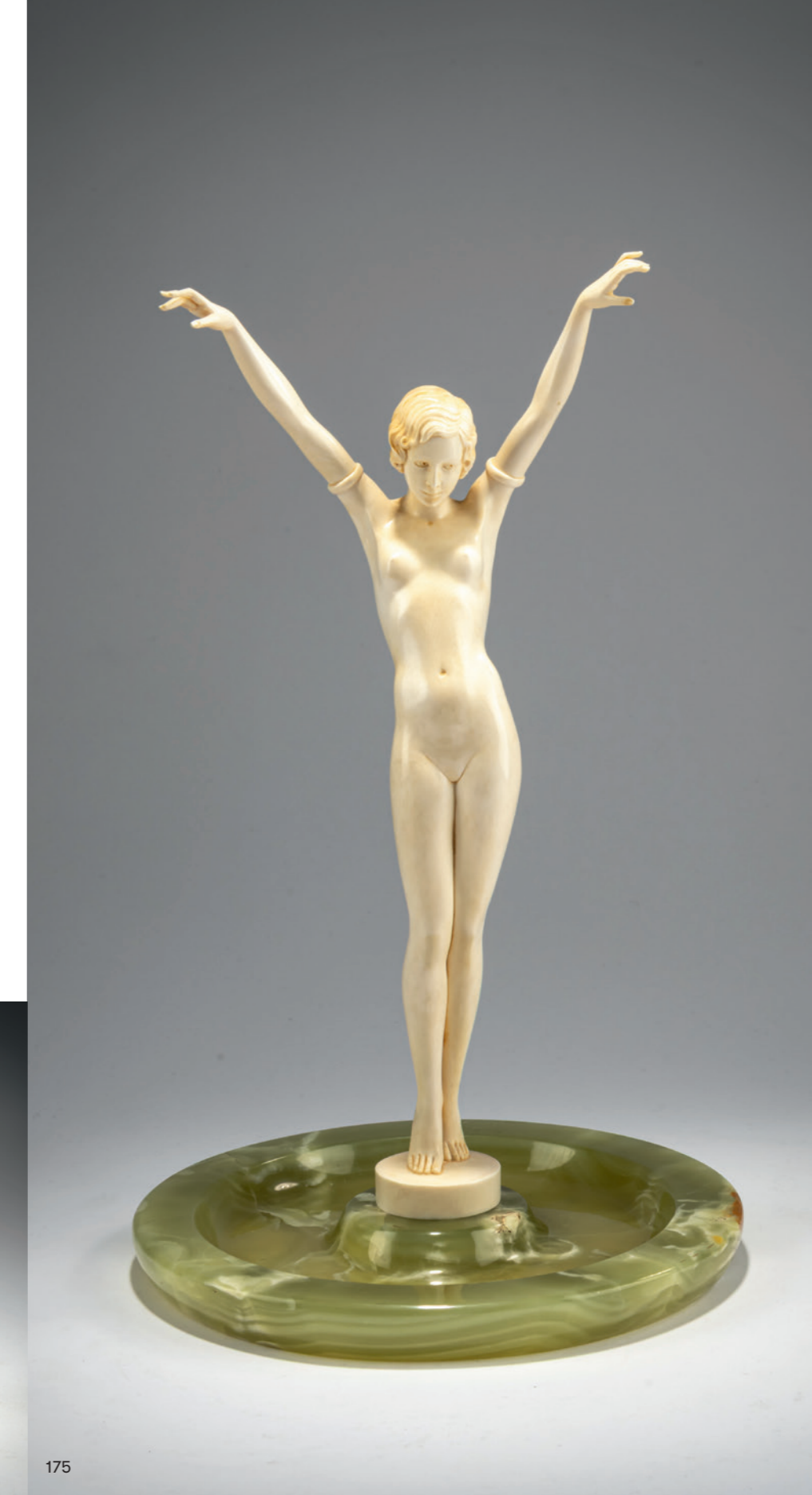
H. 33 cm, Ø 20 cm (total). Carved ivory. Plinth signed: F. Preiss (incised). Onyx bowl. Catley, Art Deco and other figures, Woodbridge 1998, p. 265.
 An EC certificate has been issued for this lot by the Department for Climate and Environmental Protection of the City of Munich, which allows objects with ivory to be marketed within the European Union.
€ 6.000 - 10.000

176
Ferdinand Preiss
Ivory figure 'Posing', c. 1925

H. 8 cm (total). Carved ivory. Base signed: F. Preiss (incised). Onyx base. Catley, Art Deco and other figures, Woodbridge 1978, p. 276.
 An EC certificate has been issued for this lot by the Department for Climate and Environmental Protection of the City of Munich, which allows objects with ivory to be marketed within the European Union.
€ 1.400 - 1.800



176



175



177

177
Ferdinand Preiss
Chryselephantine figure 'Diana', c. 1928

H. 22 cm (with base). Bronze, cold painted, head, upper body, arms and legs made of carved ivory, partially painted. Brass rods, patinated. Base signed: F. Preiss (incised). Rectangular base made of green onyx with ivory feet. Shayo, Ferdinand Preiss, Woodbridge 2005, p. 105, *ibid.*, p. 49, photo of the Preiss & Kassler booth at the Leipzig trade fair, 1930; Catley, *Art Deco and other figures*, Woodbridge 1998, p. 270 ("The Archer"); Duncan, *Art Deco Sculpture*, London 2016, p. 206. An EC certificate has been issued for this lot by the Department for Climate and Environmental Protection of the City of Munich, which allows objects with ivory to be marketed within the European Union.
€ 12.000 - 18.000



178

178
Ferdinand Preiss
Chryselephantine figure 'Hoop Girl', c. 1930

H. 20 cm (total). Cold-painted bronze. Head, neck, arms, and legs of carved ivory. Hoop and staff of brass. Base signed: F. Preiss (incised). Onyx base. Cold-painting slightly rubbed. Shayo, Ferdinand Preiss, Woodbridge 2005, p. 130, p. 49, reproduction of a contemporary photo of the Leipzig Trade Fair 1930, stand of Preiss & Kassler. An EC certificate has been issued for this lot by the Department for Climate and Environmental Protection of the City of Munich, which allows objects with ivory to be marketed within the European Union.
€ 1.400 - 1.600



179

179
J. or F. Werner
Floor lamp with 'Phänomen' shade, c. 1903

Elephant playing with a ball. H. 74.5 cm. Execution: Wiener Kunstkeramische Werkstätten Busch & Ludescher, Vienna. Earthenware, glazed gray and brown on white. Lampshade by Loetz, Klustersky Mlyn. Light amber glass, matted in the lower area, heavily crackled surface, silver-yellow fused crumbs, Phänomen Gre 377 decor, with a strong gold and pearlescent matte luster (c. 1900). Left hindleg signed: J or F. Werner (incised). Marked: Manufacturer's mark, 242/3 1 (embossed).
€ 4.000 - 5.000



180



181

180
Bruno Zach
Dancer with tambourine, c. 1920

H. 49 cm (total). Bronze. Plinth signed: Tuch (embossed).
Ochre-white stone base.
€ 2.500 - 3.500

181
Julius Zimpel
'Diana', 1924

H. 9.4 cm (without base). Execution: Friedrich Nerold, Wiener
Werkstätte. Carved ivory. Signed on the underside: artist's
monogram z, WW (ligated) and N (engraved).
Unique. Restored. Includes: wooden base.
mak.at, Inv. No. WWKA 524 (sketch). This is dated 1924 in
the archive of the Museum of Applied Arts Vienna. Only this
one executed piece is known.
An EC certificate has been issued for this lot by the Depart-
ment for Climate and Environmental Protection of the City of
Munich, which allows objects with ivory to be marketed
within the European Union.
€ 1.500 - 2.500

182
Jules Clément Chaplain
Two medals 'Exposition Universelle Paris 1878
and 1900'

Bronze, partially gold-plated. 102.37 and 127.44 grams,
respectively. Ø 63-68 mm. Stamped: JC CHAPLAIN,
BRONZE, foundry mark.
Each in case.
€ 700 - 800



182



183
Arnold Hartig
Four medals 'Mozart', 'Bach', 'Schubert' and
'Bruckner', 1924, 1928, 1956

Bronze. 48.79 - 100.41 - 168.82 - 169.43 grams. Ø 50, 59,
75 mm. Stamped: A. Hartig, Vienna Mint, Made in Austria.
'Mozart' in original case.
€ 800 - 900



183

184
Rudolf Mayer
Medal 'Goethe / Faust', 1899

Bronze. 80.07 grams. Ø 60 mm. Stamped: RM.
In case.
€ 250 - 350



185
Karl Roth
Medal 'Deutsche Verkehrsausstellung 1925'

Bronze. 30.67 grams. Ø 50 mm. Stamped: K. ROTH., G.
POELLATH SCHROBENHAUSEN.
In original case.
Image online.
€ 140 - 160



184



187

186
Stefan Schwartz
Medal 'Österreich auf der Weltausstellung
Paris 1900'

Bronze. 110.32 grams. 76 x 52 mm. Stamped: ST.
SCHWARTZ.
In case.
€ 350 - 450

187
Joseph Tautenhayn
Medal 'Schubert', 1928

Bronze. 26.00 grams. Ø 40 mm. Stamped: JT, J. TAUTEN-
HAYN FEC.
€ 140 - 160

188
Frédéric de Vernon
Medal 'Banquet de Tuileries', 1900

Bronze. 72.28 grams. 63 x 47 mm. Stamped: F VERNON,
BRONZE, foundry mark (stamped).
In case.
€ 250 - 350



186



188



191

189
Germany
Ice water jug and carafe, c. 1900

Jug: H. 34 cm. Clear glass, cut decoration, star cut on the base, silver-plated metal mount. Marked: Workshop signet Carl Deffner, Esslingen.
 Carafe: H. 21.5 cm. Clear glass, cut decoration, star cut on the base, silver mount. Stamped: German hallmarks 800, workshop signet (unidentified), EAG, SCHWARZ-KOPF.
 Image online.
€ 350 - 400

190
London
Vinegar and oil bottles, 1786-1821

Colorless cut glass, silver mount. H. 18.6-19.1 cm. Marked: MFRC, running leopard, head of George III, year letter C with crown.
 Image online.
€ 250 - 300



192

191
London
Tray, 1834

Silver. 2960 grams. 64 x 40.5 cm. Stamped: WB, lion passant, lioness's head, year letter t, profile head of King William IV.
 Engraving: PRESENTED TO ELIZABETH MAYNARD in testimony of sincere regards of disinterested and unvarying kindness by her faithful and attached friend, Initials, January 1835.
€ 2.500 - 2.800

192
Adolf von Mayrhofer, Munich
Jar, c. 1910

900 silver, jade. 202.53 grams. 5.8 x 10.5 x 9.2 cm. Stamped: Workshop signet, A. v. MAYRHOFER MUNICH, 900 German hallmarks.
€ 700 - 800

193
Germany
Pill box, c. 1925

Silver 935, enamel, partially on a guilloché background. 162.00 grams. H. 26 mm, Ø 90 mm. Stamped: 935, moon (very indistinct) crown.
 Image online.
€ 200 - 300

194
Germany
Brooch / watch winding chain, c. 1905

800 silver, green and blue enamel, two hematites, orange glass. 12.61 grams. 40 x 32 mm (closed). Stamped: REX, 800 (x) DRGM, Bte. SGD-G PAT. ANG. PAT.APPL
€ 400 - 500



194

195
Jean Baptiste Emile Dropsy
Brooch 'Iris', c. 1900

Silver, gold-plated. 3.59 grams. Ø 27 mm. Stamped: boar's head, additional hallmark (faint).
 Image online.
€ 240 - 260

196
Fabergé, St. Petersburg
Sealing wax box with the Russian double-headed eagle and the monogram of Nicholas II, 1908-16

Silver, partially gilt, blue transparent enamel on a guilloché background, numerous diamonds, sapphires, and a garnet. Total weight: 255.72 grams. Execution: Master craftsman August or Väinö Hollming, 1908-16. Stamped inside and outside: Kokoshnik mark 88, workshop signet AH with asterisk, Fabergé in Cyrillic script. The bottom also has an assayer's signet (head, facing right) for smaller objects.
 In original case without marking.
€ 800 - 1.200

197
Theodor Fahrner, Pforzheim
Case, c. 1900

Silver, gold-plated interior, violet and white enamel on a guilloché background. 98.69 grams. 12 x 80 x 56 mm. Stamped: 935.
€ 500 - 600



197

198
Theodor Fahrner, Pforzheim
Needle, c. 1930

Silver, cord soldering, coral, marcasites, black matte enamel. 8.54 grams. 63 x 10 mm. Stamped: TF 935.
€ 450 - 500

199
Theodor Fahrner, Pforzheim
Brooch, c. 1930

Silver, cord soldering, smoky quartz, marcasites, green matte enamel. 21.54 grams. 57 x 29 mm. Stamped: TF 935 (faint).
€ 450 - 500

200
Theodor Fahrner, Pforzheim
Pendant with chain, c. 1930

Silver, cord soldering, smoky quartz, green matte enamel. 16.21 grams. 58 x 22 mm; L. 402 mm. Stamped: TF, 935.
€ 450 - 500

201
Theodor Fahrner, Pforzheim
Brooch, 1930s

Silver, chalcedony, marcasites. 13.21 grams. 49 x 26 mm. Stamped: STERLING GERMANY.
€ 500 - 600



198



199



201



196



200



202



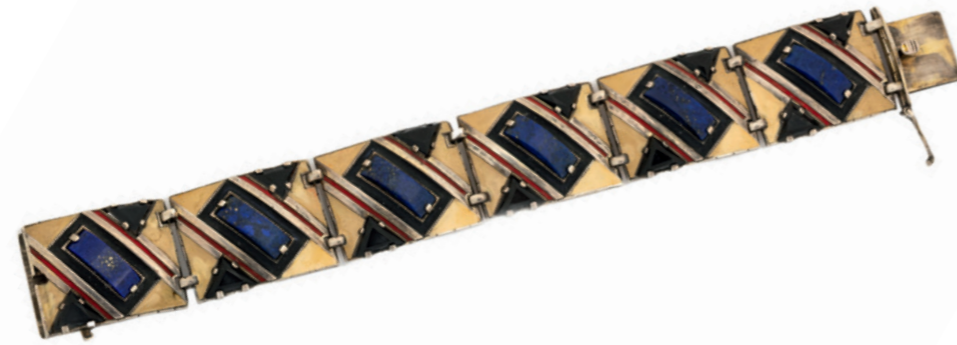
203



204



205



206

202
Theodor Fahrner, Pforzheim
Brooch, 1930s

Silver, gilded, cord soldering, coral, moonstone. 10.27 grams. 54 x 20 mm. Stamped: TF 935.
€ 400 - 450

203
Theodor Fahrner, Pforzheim
Brooch, 1930s

Silver, gilded, cord soldering, turquoises, turquoise-green and pink matte enamel. 4.72 grams. 43 x 11 mm. Stamped: TF 935.
€ 350 - 400

204
Theodor Fahrner, Pforzheim
Ring, 1932

Silver, cord soldering, onyx, light and dark blue matte enamel. 6.00 grams. Ring size 55.5. Stamped: F, DEA 935.
€ 250 - 300

205
Theodor Fahrner, Pforzheim
Necklace and brooch in a case,
c. 1928

Silver 935, marcasite, aquamarine. Brooch 12.74 grams. 60 x 22 mm. Necklace 19.75 grams. 20 x 30 mm, L. 470 mm. Stamped: TF 935.
€ 600 - 800

206
Theodor Fahrner, Pforzheim
Bracelet, c. 1930

Silver, cord soldering, lapis, onyx, cream-white matte enamel. 50.54 grams. 199 x 25 mm. Stamped: TF, 935.
€ 900 - 1.000

207
France
Compact with lipstick holder,
c. 1928

Silver, black lacquer, eggshell splinters, cut glass. 140.52 grams. 11 x 84 x 46 mm. Stamped: Boar's head (4x), workshop signet SAM (not identified), 14941.
€ 550 - 600

208
France
Cigarette case, c. 1928

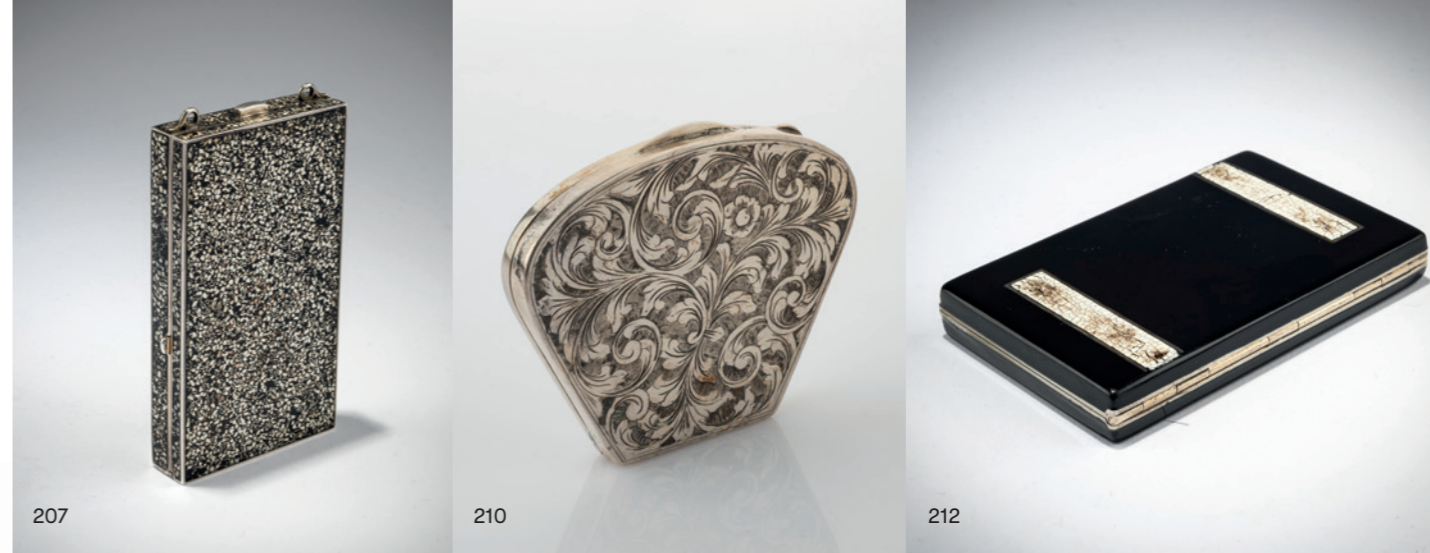
Copper sheet, gold-plated, black lacquer, eggshell splinters. 138.27 grams. 7 x 113 x 88 mm. Stamped: 5. Discoloration, dents on the bottom, superficial scratches, lid curved. Image online.
€ 340 - 440

209
Karl Hermann (Hermann & Speck),
Pforzheim
Pendant, c. 1905

900 silver, gold-plated, window enamel, oval-cut peridot, pearl. 3.28 grams. 50 x 21 mm. Stamped: 900, DEPOSE, German hallmarks, workshop signet HS.
€ 500 - 600

210
Italy
Compact, 1920s

Silver, mirror glass. 84.66 grams. 10 x 90 x 77 mm. Stamped: ITALY, 800 (2x).
€ 350 - 400



207

210

212



209



211



213



215

211
Andreas Odenwald, Pforzheim
Brooch, c. 1905

800 silver, pearl, and lapis. 4.78 grams. 35 x 35 mm. Stamped: Geschützt, 800, workshop signet AO.
€ 300 - 400

212
Orahic, France
Compact, c. 1925

Gold-plated copper sheet, black lacquer, eggshell splinters, mirror glass. 154.17 grams. 12 x 88 x 58 mm. Stamped: square workshop signet, MADE IN FRANCE ORAHIC, 3. Engraved owner's initials MK. Corner chipped, discoloration.
€ 400 - 500

213
Austria
Art Nouveau brooch

Silver, email cloisonné. 5.11 grams. 27 x 28 mm. Stamped: 800, assay mark.
€ 340 - 380

214
Hungary
Cigarette case, 1937-65

Silver, gilded, onyx. 229.05 grams. 9 x 128 x 85 mm. Stamped: KTA workshop signet, silver hallmark. Image online.
€ 450 - 550

215
USA
Collier, c. 1925

Silver 925, red and black enamel. 12.00 grams. L. 452 mm. Stamped: Workshop signet, STERLING.
€ 340 - 440

216
WMF, Geislingen
'Myra' necklace, c. 1925

36 beads. L. 46 cm. Myra glass, amber, pearlescent luster, brass beads and wire. Not stamped. Image online.
€ 300 - 400

217
WMF, Geislingen
'Ikora' pendant, c. 1930

65 x 33 mm, L. 890 mm. 'Ikora' glass, colorless with variegated efflorescence of metallic salts, silver-plated metal, brass chain. Image online.
€ 180 - 220



218



219

218
Édouard Marcel Sandoz (STYLE)
Spice set in a box, c. 1920
 H. 5.5-13 cm. Execution: Christofle, Paris. Gallia metal. Marked: embossed workshop signets.
 Box: H. 6.8 cm, 23.8 x 28.8 cm.
€ 800 - 900

219
Christofle, Paris
Twelve knife rests in a case, c. 1925
 Various animal figures. L. 8.2-10.8 cm. Silver-plated metal.
 Marked: Springer, GALLIA (stamped).
 In original box.
€ 900 - 1.200

220
Christofle, Paris
Dinanderie Vase, c. 1928
 H. 25 cm. Silver-plated copper sheet, etched decoration.
 Bottom marked: CHRISTOFLE B 1 L (stamped).
€ 800 - 900

221
Pierre Du Mont, Paris
Three-piece tea service, c. 1928
 Coffee pot, creamer, and sugar bowl. H. 8-15.5 cm. Pewter, wood. Marked: Du Mont (stamped).
€ 550 - 650

222
Pierre Du Mont, Paris
Three vases, c. 1928
 H. 10.5-18.5 cm. Pewter, wood. Marked: Du Mont (stamped).
 Image online.
€ 350 - 450



220



221



223
Jean Dunand
Vase, c. 1913
 H. 7.5 cm. Bronze, partially silver-plated.
 Bottom marked: JEAN DUNAND (stamped).
€ 4.000 - 4.500



224

224
Camille Fauré, Limoges
Small vase, before 1956

H. 14.4 cm. Copper sheet, covered with precious metal foil, with a pasty polychrome enamel finish. Marked: C. FAURE LIMOGES (gold, hand-written). Brass foot and lip.
€ 1.000 - 1.200

225
Abel Landry
Two candlesticks, 1902-04

H. 34.5-34.7 cm. Bronze, silver-plated. Not signed.
€ 900 - 1.200



225

226
Claudius Linossier, Lyon
Dinanderie bowl, c. 1925

H. 4.4 cm, Ø 13.5 cm. Silver-plated bronze sheet. Bottom marked: CL LIROSSIER (stamped).
€ 400 - 500



226

227
Claudius Linossier, Lyon
Dinanderie-Vase, c. 1928

H. 14 cm, Ø 20.3 cm. Sheet brass, copper-plated and gold-plated. Bottom marked: CL. LIROSSIER (stamped).
€ 2.500 - 3.000



227

228
Claudius Linossier, Lyon
Dinanderie-Vase, c. 1937

H. 9.5 cm, Ø 15.8 cm. Sheet brass, copper-plated and gold-plated. Bottom marked: 1937 (engraved).
€ 2.500 - 3.000



228

229
Paul François Louchet, Paris
Vase 'Orchidées' with bronze mounting, c. 1903

H. 22 cm. Copper plated, polychrome enamel-cloisonné with orchid decoration. Marked LOUCHET PARIS (Email-Cloisonné). Gilded bronze foot.
€ 4.000 - 4.500

230
Joseph Maria Olbrich
Serving spoon '5920a', 1901

L. 22.8 cm. Execution: Christofle & Cie., Paris. Metal, silver-plated. Marked: artist's signet, CHRISTOFLE, workshop signet (indistinct) (embossed).
Image online.
€ 60 - 70

231
Paul Haustein
Four-piece coffee and tea service, c. 1904

Coffee pot, teapot, creamer, sugar bowl with lid, height 10.5 -24.5 cm. Execution: Gerhardt & Cie., Lüdenscheid. Pewter with stylized floral motifs. Marked: Workshop signet 1817 (embossed).
Image online.
€ 200 - 240

232
Joseph Maria Olbrich
Butter dish and plate, 1901

H. 10.5 cm, Ø 13 cm; saucer, Ø 20.5 cm. Execution: Eduard Hueck, Lüdenscheid. Pewter, green glass insert. Bottom marked: EDELZINN 1825 or 1861 E. HUECK, artist's monogram (relief).
Image online.
€ 200 - 240

233
Joseph Maria Olbrich
Butter dish and plate, 1901

H. 10.5 cm, Ø 13 cm; saucer, Ø 20.5 cm. Execution: Eduard Hueck, Lüdenscheid. Pewter, green glass insert. Bottom marked: EDELZINN 1825 or 1861 E. HUECK, artist's monogram (relief).
Image online.
€ 200 - 240



229



234

234
Hermann Gradl
Important handle vase with underwater decoration, c. 1899

H. 74 cm. Execution: Orivit-Metallwarenfabrik, Cologne. Stoneware, glazed in shades of green, featuring a relief scene with various fish, probably made by Villeroy & Boch, Mettlach. Floral silver-plated pewter mount with partially plastic fishes. Bottom marked: "ORIVIT" 2564 (faint). One metal arm lost. Cf. exh. cat. Orivit Zinn des Jugendstils, Cologne 1992, p. 25; cf. Cat. Die Jugendstil-Sammlung, Museum für Kunst und Gewerbe Hamburg, Hamburg 1996, Vol. 2, No. 774. € 9.000 - 12.000

235
Hugo Leven
Candelabrum, 1901/02

Five-flame. H. 48 cm, Ø 36.5 cm. Execution: Kayser Son, Krefeld. Pewter. Marked: oval signet KAYSERZINN 4486 (embossed). Image online. € 600 - 700

236
Orivit-Metallwarenfabrik, Cologne
Small handle vase 'Ilex' with gilded mounting, c. 1900

H. 17.2 cm. White porcelain, glazed, polychrome underglaze. Mounted in gilt Orivit pewter. Bottom marked "ORIVIT" (stamped). € 900 - 1.200



236



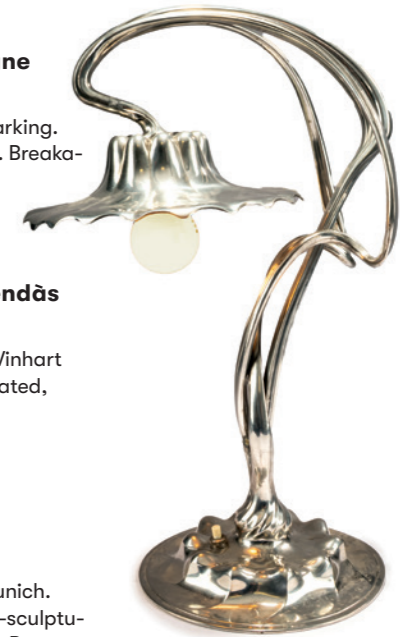
238



239

237
Orivit-Metallwarenfabrik, Cologne
Table light, c. 1904

H. 38 cm, Ø 18 cm. Orivit metal. Faint marking. Newly electrified, obscuring the marking. Breakage in the shaft. € 900 - 1.200



237

238
Hans Eduard von Berlepsch-Valendàs
Cachepot, c. 1898/99

H. 32.5 cm, Ø 39 x 51 cm. Execution: J. Winhart & Co., Munich. Copper sheet, dark patinated, chased, cast brass, polished. € 900 - 1.200

239
Ludwig Vierthaler
Tall vase, c. 1902

H. 71 cm. Execution: J. Winhart & Co., Munich. Copper sheet, dark green patina. A semi-sculptural dragon catching a fly in iris blossoms. Bottom marked: workshop signet, No. 1102. € 1.000 - 1.200

240
Tiffany Studios New York
Two candlesticks '1213', c. 1902

H. 47 cm. Cast bronze, gilded. Marked: TIFFANY STUDIOS NEW YORK 1213 (stamped). Koch, Louis Comfort Tiffany's Glass - Bronzes - Lamps, New York 1971, p. 102, fig. 140; Duncan, Tiffany Lamps and Metalware, Woodbridge 2019, p. 412 (1218). € 1.600 - 1.800



240



241



242

241
Ida Schwetz-Lehmann
'Lady with a Flower Garland',
c. 1930
 H. 24 cm. Execution: Augarten Vienna. White porcelain, glazed, polychrome overglaze. Base marked: IDA SCHWETZ-LEHMANN. Marked: WIENER GESELLSCHAFT V. FREUNDEN D. KLEINPLASTIK (green glaze stamp), manufacturer's mark (blue, underglaze), Augarten Austria (red glaze stamp), 65 (embossed), 64 (gray, handwritten).
€ 500 - 700

242
Hanni Gärtner
'Gentleman with dog', c. 1930
 H. 19.7 cm. Execution: Augarten, Vienna. White porcelain, glazed, polychrome overglaze with gold. Bottom marked: manufacturer's mark (blue, underglaze), Augarten Austria (red stamp), 1526 A (stamped).
€ 800 - 1.200

243
Ida Schwetz-Lehmann
'The First Roses', c. 1930
 H. 21.5 cm. Execution: Augarten, Vienna. White porcelain, glazed, polychrome overglaze. Bottom marked: Manufactory mark (blue, underglaze), Augarten Austria (red glaze stamp), 1511 3 (stamped), 18 (red, handwritten). Fingers of the right hand restored.
€ 200 - 400

244
Ida Schwetz-Lehmann
'Girl in the Storm', 1933
 H. 19.3 cm. Execution: Augarten, Vienna. White porcelain, glazed, polychrome overglaze. Base gold-painted. Bottom marked: Manufacturer's mark Wien (blue, underglaze, one stroke, O 1593 (stamped), Augarten Austria (red glaze stamp), 18 (orange, handwritten).
€ 400 - 600



243



244



245



246

245
Friedrich Elias Meyer
'Chinese Woman with Parrot', c. 1768
 H. 37.5 cm. Execution: KPM Berlin, between 1915 and 1918. White porcelain, glazed, with polychrome overglaze decoration with gold. Bottom marked: scepter (blue, underglaze), imperial orb (red, overglaze), Iron Cross (black, overglaze), 359, further markings (embossed), 140/881 P (blue, handwritten), P (violet, handwritten). Index finger of the left hand is lost.
€ 1.200 - 1.800

246
Wilhelm Christian Meyer; Friedrich Elias Meyer
'Figure with Code of Law for the Russian Throne',
presumably 1770-72
 H. 28 cm. Execution: KPM Berlin, presumably 1910. White porcelain, glazed, with polychrome overglaze decoration and gold. Bottom marked: scepter (blue, underglaze), imperial orb (red, overglaze), model number 527, and indistinctly embossed year letter K.
€ 500 - 700

247
Wilhelm Christian Meyer; Friedrich Elias Meyer
'Die Baukunst' from 'Die freyen Künste', c. 1770-72
 H. 36 cm. Execution: KPM Berlin, presumably in the 1830s. White porcelain, glazed, polychrome overglaze with gold. Base marked: BAUKUNST (raised). Bottom marked: Scepter (blue, underglaze), U, and further markings (stamped).
€ 1.500 - 2.500



247



248



249



250



251



252

248
Wilhelm Christian Meyer; Friedrich Elias Meyer
 'Paris as Shepherd', 1775
 H. 32.5 cm. Execution: KPM Berlin, presumably 1830s. White porcelain, glazed, polychrome overglaze with gold. Bottom marked: Scepter (blue, underglaze).
 The ram's ear and horn have been restored. The base can be unscrewed.
€ 1.500 - 2.500

249
Wilhelm Christian Meyer; Friedrich Elias Meyer
 'Venus with a Child at her Feet', 1775
 H. 33.5 cm. Execution: KPM Berlin, presumably 1830s. White porcelain, glazed, polychrome overglaze with gold. Reverse of the base marked: VENUS (raised). Bottom marked: Scepter (blue, underglaze).
 Venus's left arm and dove's wings have been restored, with some flaking. The base can be unscrewed.
€ 1.500 - 2.500

250
Johann Georg Müller
 'Juno', 1785
 H. 19.5 cm. Execution: KPM Berlin, 1913. White porcelain, glazed, polychrome overglaze with gold. Base marked: Juno (stamped).
 Bottom marked: scepter (blue, underglaze), imperial orb (red, over glaze), date letter N, 8651 (stamped).
 One braid, tip of the staff and crown of the peacock restored.
€ 300 - 500

251
KPM Berlin
 'Flora' from a centerpiece, c. 1889
 H. 37 cm. Porcelain, white, glazed, polychrome overglaze with gold. Bottom marked: scepter (blue, underglaze), imperial orb (red, over glaze, one stroke), 5212, other inscriptions (stamped).
 Ribbons in the hair broken off; tiny chips in places.
€ 700 - 1.400

252
Louis Sussmann-Hellborn
 'Flower Girl', c. 1890
 H. 42 cm. Execution: KPM Berlin. White porcelain, glazed, polychrome overglaze with gold. Bottom marked: Imperial Orb (red, over glaze), 3408, with other faint inscriptions (stamped).
€ 1.200 - 1.800

253
Adolph Amberg
 Japanese woman from the 'Wedding Procession', 1909
 H. 27 cm. Execution: StPM Berlin, 1923. White porcelain, glazed, polychrome overglaze with gold. Base signed: AMBERG (stamped).
 Bottom marked: scepter (blue, underglaze), imperial orb (red, over glaze), 9221, date letter X, further designation (stamped), 140/988, 2 (black, handwritten).
€ 500 - 700

254
Adolph Amberg
 'Chinese woman with parrot' from the 'Wedding Procession', 1910
 H. 26.5 cm. Execution: StPM Berlin. White porcelain, glazed, polychrome overglaze. Bottom marked: scepter (blue, underglaze), orb (red, over glaze), 14 D (gray, handwritten).
 No date letter.
€ 500 - 700



253

254



255
Anton Büschelberger
'Dancer with Snake', c. 1920

H. 53 cm. Execution: Karl Ens, Volkstedt. White porcelain, glazed, polychrome underglaze. Bottom marked: manufacturer's mark handgemalt (green glaze stamp). Fire cracks on the bottom, partly visible from the outside. Image online.
€ 400 - 500

256
Fraureuth Porcelain Factory
'Split Dancer', 1919-26

H. 14.5 cm. White porcelain, glazed, polychrome overglaze with gold. Bottom marked: manufacturer's mark (green, underglaze), 5 (stamped), 5 (gold, handwritten). Left hand restored. Image online.
€ 300 - 400

257
Johannes Schilling
'Noon' from 'The Four Times of Day', 1870

H. 46 cm. Execution: KPM Meissen, before 1924. White porcelain, glazed, with polychrome overglaze decoration and gold. Bottom marked: Button Swords (blue, under glaze, one stroke), I 186 (incised), 137 (embossed). Based on the figure on Brühl's Terrace in Dresden. Retouching and tiny imperfections on the flowers of the cornucopia and the wreath. Berling, Meissen China, reprint, New York 1972, p. 94, p. 97.
€ 4.000 - 6.000

257



258



259

258
Johannes Schilling
'The Night' from the series 'The Four Times of Day', 1870

H. 36.5 cm. Execution: KPM Meissen, before 1924. White porcelain, glazed, polychrome overglaze with gold. Bottom marked: Button Swords (blue, underglaze), H. 191 (incised), H. 121 (stamped). Based on the figure on Brühl's Terrace in Dresden. Cupid's wings glued, lady's cloth with a small loss, left foot of the sleeping youth restored. Berling, Meissen China, reprint, New York 1972, p. 94, p. 97.
€ 2.500 - 5.000

259
Johannes Schilling
'The Evening' from the series 'The Four Times of Day', 1870

H. 35 cm. Execution: KPM Meissen, before 1924. White porcelain, glazed, polychrome overglaze with gold. Bottom marked: Button Swords (blue, underglaze), H. 195 (incised), H. 50 (stamped). Based on the figure on Brühl's Terrace in Dresden. The lute player's left hand and the lute's neck have been restored. The base has a few chips at the back. Berling, Meissen China, reprint, New York 1972, p. 94, p. 97.
€ 3.000 - 5.000

260
Emmerich Andresen
'The Fates', 1888

H. 42 cm. Execution: KPM Meissen, before 1924. White porcelain, glazed, polychrome overglaze with gold. Base signed: E. Andresen. Bottom marked: Button Swords (blue, underglaze), O 126 (incised), 121 (embossed), 69 (brown, handwritten). Spindle and hand of the right female figure restored.
€ 3.000 - 5.000

261
Emmerich Andresen
'The Graces Disarming Cupid', 1890

H. 35.5 cm. Execution: KPM Meissen, before 1924. White porcelain, glazed, polychrome overglaze with gold. Base signed: E. Andresen (stamped). Bottom marked: Button Swords (blue, under glaze, one stroke), O 190 (incised), 143 (stamped). The tip of the bow in the middle lady's hand has been restored, while the bow has a missing part in the ribbon; the same applies to Cupid's left index finger.
€ 4.000 - 6.000



260



261



262

262
Konrad Hentschel
'Clock case with four figures', 1897

H. 38 cm. Execution: KPM Meissen, before 1924. White porcelain, glazed, polychrome overglaze with gold. Bottom marked: Button Swords (blue, under glaze, one stroke), Q 141 (incised), 52 (stamped). Mechanical clockwork, probably German. Approx. 6 cm in diameter. Brass sheet, brass rods. Unmarked.
€ 1.200 - 1.800



263

263
Paul Helmig
'Clock case with Lovers', 1904

H. 21.5 cm, 47 x 11.5 cm. Execution: KPM Meissen, before 1924. White porcelain, glazed, polychrome overglaze. Gilded brass dial. Bottom marked: Button Swords (blue, underglaze), U 189 (incised), 50 (stamped). Mechanical clockwork by Lenzkirch. Ø 6 cm. Brass sheet, metal rods, screws. Marked: Workshop mark, 154, 19599 (stamped). With key!

The young man's right toe has been restored, the young woman's figure has been repainted.

€ 1.200 - 1.800

264
Konrad Hentschel
'Clock case with two figures, dancing', c. 1910

H. 31.5 cm. Execution: KPM Meissen, before 1924. White porcelain, glazed, with polychrome overglaze decoration and gold. Burnished brass dial. Bottom marked: Button Swords (blue, under glaze, one stroke), W 116 (incised), 48 (stamped).

Mechanical clockwork, probably from Lenzkirch. Ø 7 cm. Sheet brass, screws. Marked: Workshop mark LK 1745 (stamped).

€ 1.200 - 1.800

265
Konrad Hentschel
'Crouching Child with a Doll in their Hands', 1904

H. 11 cm. Execution: KPM Meissen, before 1924. Porcelain, white, glazed, polychrome overglaze. Marked: Button Swords (blue, underglaze), W 117 (incised), 42 (embossed), 62 (red, handwritten).

€ 900 - 1.200



264

266
Konrad Hentschel
'Seated Child with Picture Book', 1904

H. 10 cm. Execution: KPM Meissen, before 1924. Porcelain, white, glazed, polychrome overglaze. Marked: Button Swords (blue, underglaze), U 149 (incised), 145 (embossed).
€ 700 - 900

267
Konrad Hentschel
'Bending girl with doll, at a doll's pram', 1905

H. 13 cm. Execution: KPM Meissen, before 1924. Porcelain, white, glazed, polychrome overglaze with gold. Marked: Button Swords (blue, underglaze), W 124 (incised), 48 (embossed), 66 (black, handwritten). Small chip on the foot; firing crack.

€ 1.200 - 1.500

268
Konrad Hentschel
'Child with a cat in her arms, sitting on a bench', 1905

H. 12 cm. Execution: KPM Meissen, 1992. Porcelain, white, glazed, polychrome overglaze with gold. Marked: Swords (blue, underglaze), W 121, 95, year mark for 1992 (stamped), 81 (red, handwritten).

€ 700 - 900

269
Konrad Hentschel
'Child with a newspaper cap, riding a wooden horse', 1905

H. 17 cm. Execution: KPM Meissen, before 1924. Porcelain, white, glazed, polychrome overglaze. Marked: Button Swords (blue, underglaze), W 120 (incised), 51 (embossed), 26 (red, handwritten).

€ 800 - 900



265



266



267



268



269



270



271



273



272



274



275

270
Konrad Hentschel
'Standing Child Drinking from an Onion Pattern Cup', 1905

H. 16.5 cm. Execution: KPM Meissen, before 1924. Porcelain, white glazed, polychrome overglaze. Marked: Button Swords (blue, underglaze), W 118 (incised, indistinct) (...) (embossed), 64 (black, handwritten).
€ 800 - 900

271
Konrad Hentschel
'Child sitting on a cushion', 1905

H. 12 cm. Execution: KPM Meissen, before 1924. Porcelain, white, glazed, polychrome overglaze. Marked: Button Swords (blue, underglaze), U 150, 131 (embossed), 20 (red, handwritten).
€ 700 - 900

272
Konrad Hentschel
'Four children looking at a doll, sitting on a bench', 1906

H. 14 cm, 24.5 x 15 cm. Execution: KPM Meissen, 1997. Porcelain, white, glazed, polychrome overglaze. Marked: Swords (blue, underglaze), 73373, 58, year mark for 1997 (embossed), 2834 (red, handwritten).
€ 2.200 - 2.600

273
Konrad Hentschel
'Standing girl with a dangling doll in her left hand', 1907

H. 17 cm. Execution: KPM Meissen, before 1924. Porcelain, white, glazed, polychrome overglaze. Marked: Button Swords (blue, underglaze), X 164 (incised), 107 (embossed), 10 (red, handwritten).
€ 700 - 900

274
Konrad Hentschel
'Standing child, riding on a stick, with drum', 1905

H. 19 cm. Execution: StPM Meissen, 1962. Porcelain, white, glazed, polychrome overglaze. Marked: Swords (blue, underglaze, two strokes), W 119, 149, year mark (stamped).
€ 700 - 900

275
Konrad Hentschel
'Two Children Baking Sand Molds', 1906

H. 11 cm, 24.5 x 14 cm. Execution: StPM Meissen, 1934-45. Porcelain, white, glazed, polychrome overglaze. Marked: Swords (blue, underglaze), W 165 (incised), 1422 (embossed).
€ 1.200 - 1.400



276

276

**Theodor Eichler
'Dancer', 1914**

H. 28 cm. Execution: KPM Meissen, before 1924. White porcelain, glazed, polychrome overglaze with gold. Bottom marked: Button Swords (blue, underglaze), E. 247 (incised), 60 (turquoise, hand-written).

Both arms restored.

€ 600 - 800

277

**Karl Theodor Eichler
'Lady with Cape', 1910**

H. 43 cm. Execution: StPM Meissen, 1934-45. Porcelain, white, glazed, polychrome overglaze with gold and white enamel drops. Marked: Swords (blue, under glaze, one stroke), A 281 (incised), 108 (embossed).

Dress with retouches. Flat chips under the stand.

Exh. cat. Jugendstil in Dresden, Dresden 1999, p. 257.

€ 3.000 - 4.000

278

**Paul Zeiller
'Great Crested Grebe', 1912**

H. 13.6 cm. Execution: StPM Meissen, 1934-45. White glazed porcelain. Bottom marked: Swords (blue, under glaze, one stroke), W 270 (incised), 76 (embossed).

Image online.

€ 180 - 220

279

**Heinrich Thein (attributed)
'Woing', c. 1947**

H. 22.5 cm. Execution: StPM Meissen, c. 1947. White porcelain, glazed, polychrome overglaze with gold. Bottom marked: Swords (blue, underglaze, four strokes), R 270 (incised), 43 (stamped).

Image online.

€ 500 - 700

280

**Ferdinand Liebermann
'Temple Dedication', 1912**

H. 36.5 cm. Execution: Rosenthal, Selb, 1916. White porcelain, glazed, polychrome underglaze with gold. Base signed: FERD. LIEBERMANN (brown). Bottom marked: Diese Modell existiert nur in 200 Exemplaren. Nummer 135, manufacturer's mark, World War I mark 1914-1916 (green stamp), 11 (stamped).

Vessel in the right hand reattached.

Exh. cat. Rosenthal. Hundert Jahre Porzellan, Hanover 1982, p. 10.

€ 2.000 - 2.500

281

**Albert Caasmann
'Ariadne', 1914**

H. 14.2 cm. Execution: Rosenthal, Selb, c. 1920. White porcelain, glazed, polychrome overglaze with gold. Base signed: A. Caasmann (embossed). Bottom marked: manufacturer's mark (green, underglaze), K-346 (embossed), painter's signature Schwalb (gray, hand-written).

Image online.

€ 200 - 260



277

282

**Berthold Boess
'Snake Charmer', 1916**

H. 19.5 cm. Execution: Rosenthal, Selb, 1929. White porcelain, glazed, polychrome underglaze with gold. Base signed: B. BOEHS (sic!). Bottom marked: manufacturer's mark (green, underglaze), K-442 (embossed).

Image online.

€ 160 - 220

283

**Constantin Holzer-Defanti
'Lady with a Muff (Lo Hesse)', 1918**

H. 30 cm. Execution: Rosenthal, Selb, c. 1920. White porcelain, glazed, polychrome underglaze. Bottom marked: manufacturer's mark (green, underglaze), K-531 (embossed).

€ 700 - 900

284

**Constantin Holzer-Defanti
'Lady with a Muff (Lo Hesse)', 1918**

H. 29.5 cm. Execution: Rosenthal, Selb, c. 1920. Porcelain, white, glazed, underglaze in gray and black. Base signed: CONSTANTIN HOLZER-DEFANTI. Bottom marked: manufacturer's mark (green, underglaze), K. 531 (embossed), JMai (handwritten).

€ 800 - 1.000

285

**Richard Förster
'Persian Lovers', 1921/22**

H. 16.5 cm. Execution: Rosenthal branch factory, Selb, 1921/22. White porcelain, glazed, polychrome overglaze with gold. Bottom marked: manufacturer's mark (green, underglaze), R. FÖRSTER 75 3 (stamped).

Woman's right hand restored.

Image online.

€ 100 - 200

286

**Constantin Holzer-Defanti
'Humorous (Lo Hesse)', 1921/22**

H. 30 cm. Execution: Rosenthal branch factory, Selb, 1921/22. White porcelain, glazed, polychrome overglaze with gold.

Thumb and index finger of the right hand restored.

Image online.

€ 200 - 400

287

**Constantin Holzer-Defanti
'Bubikopf (Lo Hesse)', c. 1923**

H. 18.8 cm. Execution: Rosenthal branch factory, Selb, 1926. White porcelain, glazed, polychrome overglaze with gold. Base signed: C. HOLZER-D (stamped). Bottom marked: Manufacturer's mark in the cartouche (green, underglaze), 64, Y (stamped).

Image online.

€ 400 - 500



280



283



284

288

**Grete Zschäbitz
'Scheherazade', 1925**

H. 9 cm. Execution: Rosenthal, Selb, 1929. White porcelain, glazed, polychrome overglaze with gold. Marked on the base: manufacturer's mark (green, under glaze), GZ, 5 (stamped).

Image online.

€ 340 - 400



289

289
Constantin Holzer-Defanti
'Karsawina', 1926

H. 31.5 cm. Execution: Rosenthal branch factory, Selb, 1928. White porcelain, glazed, polychrome overglaze. Bottom marked: manufacturer's mark in the cartouche (green, underglaze), 344 (embossed), painter's signature (gray, handwritten). Small chips on the base. Niecol, Rosenthal, Kunst- und Zierporzellan 1897-1945, Vol. 1, Wolnzach 2001, p. 203.

290
Theodor Kärner
Young woman with German Shepherd, c. 1926

H. 23.2 cm. Execution: Rosenthal branch factory, Selb, 1928. White porcelain, glazed, polychrome overglaze with gold. Bottom marked: manufacturer's mark in the cartouche (green, underglaze), T. KÄRNER 353 Z (stamped). Image online. € 300 - 400

291
Gustav Oppel
'Prayer Dancer', 1927

H. 24 cm. Execution: Rosenthal, Selb, probably after 1946. White porcelain, glazed, predominantly violet and silver-gray overglaze. Base signed: GO (stamped). Bottom marked: manufacturer's mark (green, underglaze), 961/2 (stamped), 1014 (indistinct), S (brown, handwritten). Image online. € 150 - 200

292
Wolfgang Schwarzkopff
'Carmen', 1927

H. 40.5 cm. Execution: Rosenthal branch factory, Selb, 1940. White porcelain, glazed, predominantly lobster red and black overglaze with silver gray. Bottom marked: manufacturer's mark (green, underglaze), SCHWARZKOPFF, 425 (stamped). € 400 - 600

293
Gustav Oppel
'Scherzo', 1927

H. 23 cm. Execution: Rosenthal, Selb, 1929. White porcelain, glazed, polychrome overglaze. Base signed: GO (stamped). Bottom marked: manufacturer's mark (green, underglaze), 962 (stamped), A. Geigenmiller (gray, handwritten). Fingers of the left hand and pinky of the right hand restored. Image online. € 100 - 200

294
Gustav Oppel
'Salambo', 1927

H. 26.2 cm. Execution: Rosenthal, Selb, 1929. White porcelain, glazed, polychrome underglaze with gold. Base signed: GO (stamped). Bottom marked: manufacturer's mark (green, underglaze), K-956, 10, D (gray), artist's signature (brown, handwritten). Also marked: 50 JAHRE DIE WELTMARKE. Image online. € 200 - 250



292



296



297



299

295
Gustav Oppel
'Scheherazade', 1929

H. 13 cm. Execution: Rosenthal, Selb, after 1949. White porcelain, glazed, polychrome overglaze with gold. Base signed: GO (stamped). Bottom marked: manufacturer's mark (green, underglaze), 1043 (stamped), Handgemalt 952, 20 (green, handwritten). Image online. € 150 - 200

296
Rosenthal, Selb
'Lo Hesse', 1930

H. 21.1 cm. Execution: Rosenthal branch factory, Selb, c. 1930. White porcelain, glazed, polychrome overglaze. Bottom marked: Manufacturer's mark in the cartouche (green, underglaze), 53/00 (embossed), painter's signet (red, handwritten). Thumb of the right hand restored. € 400 - 500

297
Constantin Holzer-Defanti
Two candlesticks, c. 1926

H. 29.5-30.5 cm. Execution: Rosenthal, branch factory Selb, 1928 or 1929. Porcelain, white, glazed, polychrome overglaze with gold. Marked: Manufacturer's mark in cartouche (green, underglaze), 345 or 346 (embossed). Remains of original labels. € 1.400 - 1.600



302

298
Bing & Grøndahl, Copenhagen
Vase, 1915-48

H. 17.8 cm. Porcelain, white, glazed, polychrome underglaze with floral decoration. Bottom marked: manufacturer's mark, 8807/390 GH (green, underglaze), B&G (blue, underglaze), and other markings. Image online. € 400 - 500

299
A. Christensen
Unique vase 'Lilies', 1898

H. 32 cm. Execution: Royal Copenhagen. White porcelain, glazed, overglaze in dark blue, green, and white. Bottom marked: A Christensen 1898, waves (blue, underglaze), 33 b A (incised). € 900 - 1.200

300
Royal Copenhagen
Small vase with Narcissus, 1897-1922

H. 16.8 cm. White porcelain, glazed, polychrome underglaze with daffodils. Bottom marked: ROYAL COPENHAGEN, 392/240 (green, underglaze), Waves 43 (blue, underglaze). Image online. € 300 - 400

301
Royal Copenhagen
Decorative plate, 1921

Ø 22.7 cm. Porcelain, white, glazed, polychrome underglaze. Marked: ROYAL COPENHAGEN (green, underglaze), waves, artist's signet (unidentified) (blue, underglaze), 1921/T 122 (green, handwritten). Image online. € 240 - 280



304

302
Jais Nielsen
Vase, 1925

H. 39.2 cm. Execution: KPM Copenhagen. Porcelain, white, relief, celadon green glaze. Decorated with images from the 4th Book of Moses, Chapter 20, Line 11. Marked: CUMQUE ELEVASSET MOYSES MANUM PERCUTIENS VIRGA BIS. Bottom marked: JAIS, 2-3-1925, waves (blue, under glaze), SK 8 2222 B (embossed). Provenance: From the collection of Maria and Hans-Jürgen Heuser, Hamburg, no. 6036. € 500 - 600

303
Rudolf Hentschel
Three dinner plates 'Wing Pattern', 1901

Ø 26.5 cm. Execution: KPM Meissen, before 1924. Porcelain, white, glazed, underglaze in gray-green and dark blue. Marked: Button swords (blue, underglaze, two strokes), T 22, 1 (embossed), 35 or 52. (blue, handwritten). One plate with two chips under the rim. Image online. € 400 - 500

304
StPM Meissen
Vase with crystal glaze, 1924-33

H. 24 cm. White porcelain, glazed, beige-brown and blue efflorescent crystal glaze. Bottom marked: Pfeiffer mark (blue, underglaze), 151/63 (incised). Chip at the lip. € 1.000 - 1.200



305

305
Hermann Gradl
Eight pieces from the fish service
'Modern', 1899

Tureen, sauce boat, and six plates. H. 16 cm, 28.5 x 22 cm; H. 14.8 cm; 27 x 14.5 cm; Ø 23.5 cm. Execution: KPM Nymphenburg. White porcelain, glazed, overglaze in green and violet with gold. Marked: diamond shield, manufacturer's mark (blue, underglaze), and other markings. Ziffer, Nymphenburger Moderne, Munich 1997, p. 88, no. 90.
€ 2.800 - 3.600

306
Hermann Gradl
Six plates from the fish service
'Modern', 1899/1900

Ø 23.5 cm. Execution: KPM Nymphenburg. Porcelain, white, glazed, overglaze in green and violet with gold. Marked: diamond shield, manufacturer's mark (blue, underglaze), XXI, 161 (violet, handwritten). One plate with a long, continuous hairline crack.
€ 1.500 - 1.800



306

307
Hermann Gradl
Six plates from the fish service
'Modern', 1899/1900

Ø 23.5 cm. Execution: KPM Nymphenburg. Porcelain, white glazed, overglaze in green and violet with gold. Marked: diamond shield, manufacturer's mark (blue, underglaze), XXI, 161 (violet, handwritten).
€ 1.500 - 1.800

308
Hermann Gradl
Six plates from the fish service
'Modern', 1899/1900

Ø 23.5 cm. Execution: KPM Nymphenburg. Porcelain white, glazed, overglaze in green and violet with gold. Marked: diamond shield, manufacturer's mark (blue, underglaze), XXI, 161 (violet, handwritten).
€ 1.500 - 1.800

309
Arnold Nechansky (ATTR.)
Putto with cloak, c. 1912

H. 34 cm. Earthenware, polychrome glaze, gray craquelure. Bottom marked faintly. Image online.
€ 200 - 300

310
Marcel Guillard
Bather with greyhound, c. 1930

H. 45.5 cm. Execution: Etling, Paris. Earthenware, polychrome glaze. Bottom marked: FRANCE, Etling workshop signet, artist's stamp, AR Philippe (stamped). Image online.
€ 400 - 600



307



308



311
Marcel Renard
'La Soie', c. 1925

H. 49 cm. Execution: André Fau, Boulogne. Earthenware, yellow-brown and gray glaze, craquelure. Bottom marked: Andre Fau, Boulogne, MADE IN FRANCE, MARCEL RENARD (stamped).
€ 800 - 1.200



313

312
Albert Dominique Rosé
'Ruth', c. 1911/12

H. 38 cm. Execution: Friedrich Goldscheider, Vienna. Earthenware, polychrome glaze. Base signed: Rosé (embossed). Bottom marked: Goldscheider Wien (black glaze stamp) 4141 451 65 (embossed). F. further handwritten mark (black). Base restored.
€ 500 - 700

313
Albert Dominique Rosé
'Nude young lady walking her tiger', c. 1922

H. 60 cm. Execution: Friedrich Goldscheider, Vienna. Earthenware, polychrome glaze. Bottom marked: Goldscheider Wien (black glaze stamp), F. V (black, handwritten). Manufacturing-related crack in the garland.

314
Josef Lorenzl
'Captured Bird' (Niddy Impekhoven), c. 1922

H. 47.4 cm. Execution: Friedrich Goldscheider, Vienna. Earthenware, polychrome glaze. Base signed: Lorenzl (stamped). Bottom marked: MADE IN AUSTRIA, Goldscheider Wien, (black glaze stamp) 532 458 4 (stamped), XXVII, additional handwritten mark (black). Hands restored.
€ 1.200 - 2.200

315
Josef Lorenzl
'Captured Bird' (Niddy Impekhoven), c. 1922

H. 47.2 cm. Execution: Friedrich Goldscheider, Vienna. Earthenware, polychrome glaze. Base signed: Lorenzl (stamped). Bottom marked: Goldscheider Wien (black glaze stamp) 5230 64 65 (stamped), XXVII, with additional handwritten marks (black). Hands restored.
€ 1.200 - 2.200



314

315

316
Josef Lorenzl
'Captive Bird' group as lamp base, c. 1922

H. 52.5 cm. Execution: Friedrich Goldscheider, Vienna. Earthenware, polychrome glaze. Bottom marked: Goldscheider Wien, MADE IN AUSTRIA HAND-DECORATED (black glaze stamp), 5530 5 10 (stamped), XXVII D1 P (black, handwritten). Not electrified. Restored.
€ 1.000 - 1.200

317
Josef Lorenzl
'Captured Bird' (Niddy Impekhoven), c. 1922

H. 45 cm. Execution: Friedrich Goldscheider, Vienna. Earthenware, polychrome glaze. Bottom marked: MADE IN AUSTRIA, Goldscheider Wien, Hand Decorated (black glaze stamp), 05 5230 2415 6 (embossed), handwritten marks (black).
€ 1.600 - 2.200



316

317



318

318
Josef Lorenzl
'Aida', c. 1923/24

H. 47.5 cm. Execution: Friedrich Goldscheider, Vienna. Earthenware, polychrome glaze. Base signed: Lorenzl (glazed), 5281 38 1. Bottom marked: Goldscheider Wien (black glaze stamp), AS, XXII (black, handwritten).
€ 900 - 1.200



319

319
Josef Lorenzl
'Aida', c. 1923/24

H. 45.4 cm. Execution: Friedrich Goldscheider, Vienna. Earthenware, polychrome glaze. Base signed: Lorenzl (embossed). Bottom marked: MADE IN AUSTRIA, Goldscheider Wien, Hand-Decorated (black glaze stamp), 5281 69 87 (embossed), handwritten marks (black, green). Abrasion to the diadem; shallow chip on the base.
€ 700 - 900



320



321

320
Josef Lorenzl
'Dancer in a butterfly costume', c. 1924/25

H. 46.8 cm. Execution: Friedrich Goldscheider, Vienna. Earthenware, polychrome glaze. Base signed: Lorenzl (embossed). Bottom marked: MADE IN AUSTRIA, Goldscheider Wien, Hand-Decorated (black glaze stamp), 5434 405 7 (embossed), F., and additional handwritten marks (black).
€ 1.600 - 2.200

321
Josef Lorenzl
'Standing young lady in carnival costume', c. 1925

H. 34.8 cm. Execution: Friedrich Goldscheider, Vienna. Earthenware, polychrome glaze. Base signed: Lorenzl (embossed). Bottom marked: MADE IN AUSTRIA, Goldscheider Wien, Hand-Decorated (black glaze stamp), 5436 70 15 (embossed), handwritten marks (black). Hat brim and fingers retouched.
€ 600 - 800

322
Vally Wieselthier
'Seated Female Nude', c. 1927

H. 37 cm. Execution: Friedrich Goldscheider, Vienna. Majolica, polychrome glaze. Bottom marked: Goldscheider Wien, MADE IN AUSTRIA (black glaze stamp), 7789 2 (incised). Dechant/Goldscheider, Goldscheider, Stuttgart 2007, p. 471.
€ 2.500 - 3.500

323
Josef Lorenzl
'Group of standing dancer in fan-shaped dress, behind her a man with a violin', c. 1929

H. 44 cm. Execution: Friedrich Goldscheider, Vienna. Earthenware, polychrome glaze. Bottom marked: MADE IN AUSTRIA, Goldscheider Wien, Hand Decorated (black glaze stamp), 58718575 (embossed), F., MR (black, handwritten).
€ 1.200 - 1.800

324
Josef Lorenzl
'Standing young lady with large hat (in pose), c. 1930

H. 32 cm. Execution: Friedrich Goldscheider, Vienna. Earthenware, polychrome glaze. Base signed: Lorenzl (stamped). Bottom marked: Goldscheider Wien (black glaze stamp), fabriqué en Autriche (green glaze stamp), MADE IN AUSTRIA, Lorenzl, 6229 544 10 (stamped), handwritten marks (black).
€ 500 - 700



322



323



324

325

Stephan Dakon
'Blonde Dream', c. 1932

H. 39 cm. Execution: Friedrich Goldscheider, Vienna. Earthenware, polychrome glaze. Base signed: Dakon (embossed). Bottom marked: MADE IN AUSTRIA, Goldscheider Wien, Dakon (black glaze stamp) 6651 342 11 (embossed), S., further mark (black, handwritten). Small chip on the hat.
€ 800 - 1.200

326

Stephan Dakon
'Madelaine, c. 1933

H. 32 cm. Execution: Friedrich Goldscheider, Vienna. Earthenware, polychrome glaze. Bottom marked: Goldscheider Wien, MADE IN AUSTRIA, Dakon (black glaze stamp), 6704 446 2 (embossed), and other markings. Two numbered paper labels.
€ 600 - 800

327

Josef Lorenzl
'Jealousy', 1934/35

H. 37.7 cm. Execution: Friedrich Goldscheider, Vienna. Earthenware, polychrome glaze. Base signed: Lorenzl (stamped). Bottom marked: MADE IN AUSTRIA, Goldscheider Wien Lorenzl (black glaze stamp) 7037 22 16 (stamped).
€ 800 - 1.000

328

Stephan Dakon
'Standing Elegant Lady', c. 1934

H. 42 cm. Execution: Friedrich Goldscheider, Vienna. Earthenware, polychrome glaze. Bottom marked: MADE IN AUSTRIA, Goldscheider Wien Dakon (black glaze stamp) 6704 446 2 (embossed), F., N. (handwritten, black).
€ 900 - 1.200



329

330

329
Claire Herczeg-Weiss
'Dancer in a long dress', c. 1934/35

H. 28 cm. Execution: Friedrich Goldscheider, Vienna. Earthenware, polychrome glaze. Base signed: Claire Weiss (embossed). Bottom marked: MADE IN AUSTRIA, Goldscheider Wien (black glaze stamp) 7040 116 11 (embossed) F., C additional mark (black, handwritten).
€ 500 - 700

331
Stephan Dakon
'Dancer in a sweeping, rotating movement', c. 1935

H. 24.5 cm. Execution: Friedrich Goldscheider, Vienna. Earthenware, polychrome glaze. Base signed: Dakon (embossed). Bottom marked: MADE IN AUSTRIA, Goldscheider Wien, Dakon (black glaze stamp), 7078 216 31 (embossed), handwritten marks (black).
€ 400 - 600

332
Josef Lorenzl
'Evening Dress', c. 1935

H. 28.7 cm. Execution: Friedrich Goldscheider, Vienna. Earthenware, polychrome glaze. Base signed: Lorenzl (embossed). Bottom marked: MADE IN AUSTRIA, Goldscheider Wien, Lorenzl (black glaze stamp) 7224 123 19 (embossed), S., further handwritten marks (black).
€ 400 - 600

330
Claire Herczeg-Weiss
'Standing elegant lady with large hat and long gloves', c. 1935

H. 39.2 cm. Execution: Friedrich Goldscheider, Vienna. Earthenware, polychrome glaze. Bottom marked: MADE IN AUSTRIA, Goldscheider Wien (black glaze stamp), 7279 95 31 (embossed), handwritten mark (black).
€ 700 - 900



331

332



333



334

333
Josef Lorenzl
'Sonata', c. 1936

H. 41.5 cm. Execution: Friedrich Goldscheider, Vienna, 1938–45. Earthenware, polychrome glaze. Marked on the base: Goldscheider Wien, MADE IN GERMANY (black glaze stamp), 8459 42 7 (stamped), W, B (handwritten).
€ 800 - 1.000

334
Stephan Dakon
'Arabella', c. 1937

H. 42.5 cm. Execution: Friedrich Goldscheider, Vienna. Earthenware, polychrome glaze. Bottom marked: Goldscheider Wien, MADE IN AUSTRIA, Dakon (black glaze stamp), 7776 41 31 (embossed), and other inscriptions (black, handwritten).
€ 700 - 900

335
Josef Lorenzl
'Fan Dance', c. 1938

H. 42 cm. Execution: Friedrich Goldscheider, Vienna, 1938–45. Earthenware, polychrome glaze. Bottom marked: Goldscheider Wien MADE IN GERMANY (black glaze stamp), 8363 133 31 (embossed), H, W (handwritten).
€ 800 - 1.000

336
Claire Herczeg-Weiss
'Fashion figure', c. 1938

H. 31.5 cm. Execution: Friedrich Goldscheider, Vienna, 1938–45. Earthenware, polychrome glaze. Bottom marked: MADE IN GERMANY, Goldscheider Wien (black glaze stamp), 8438 43 21 (embossed), handwritten marks (black).
€ 500 - 700



335



336



337

336
Josef Lorenzl
'Standing girl half-nude with a long cloth wrapped around her hips', c. 1939

H. 39.5 cm. Execution: Friedrich Goldscheider, Vienna, 1938–45. Earthenware, polychrome glaze. Bottom marked: MADE IN GERMANY, Goldscheider Wien (black glaze stamp), 8461 31 66 (embossed), handwritten marks (black).
€ 700 - 900

337
Josef Lorenzl
'Dancing Harmony', c. 1941

H. 38.5 cm. Execution: Friedrich Goldscheider, Vienna. Earthenware, polychrome glaze. Bottom marked: MADE IN AUSTRIA, Goldscheider Wien (black glaze stamp), 87137 (embossed), handwritten mark (black). Left arm and at least two fingers of the right hand restored.
€ 400 - 600

338
Keramische Werkgenossenschaft, Vienna
'Walking Lady', c. 1913

H. 28.5 cm. Earthenware, polychrome glaze with gold. Base marked: KW WIEN, 316, 6 (stamped).
€ 500 - 700



338



339



340



341



343



344

340

Keramos, Vienna
'Bather', 1920s

H. 38.5 cm. Earthenware, polychrome glaze. Bottom marked: manufacturer's mark MADE IN AUSTRIA (black glaze stamp), 758 (stamped), D 1 (black, handwritten).
€ 400 - 600

341

Josef Lorenzl
'Dancer', c. 1922

H. 52.5 cm. Execution: Keramos, Vienna. Earthenware, polychrome glazed. Base signed: Lorenzl (glazed). Bottom marked: manufacturer's mark (black glaze stamp), 619 3142 1 (embossed), paper label, marked: W 106.
€ 1.200 - 1.800

342

Clarisse Kinsbourg-Lévy
'Seated Nude', c. 1930

H. 36 cm. Earthenware, polychrome glaze. Base signed: Claris Levy (incised). Bottom marked: FRANCE EDITION KAZA (embossed).
€ 400 - 600

343

Eduard Klablana
'Fashion Lady', 1912-13

H. 32 cm. Execution: Langenzersdorfer Keramik. Earthenware, polychrome glaze. Bottom marked: LANG ENZERS DORF, WW (stamped).
€ 2.000 - 2.600

344

Eduard Klablana
'Lady in Morning Dress', 1913/14

H. 31 cm. Execution: Langenzersdorfer Keramik. Earthenware, polychrome glaze. Base marked: LANG ENZERS DORF, B (embossed). Tiny chips on the right sleeve.
€ 1.200 - 1.800



342

345

Emy Bodewig-Pallenberg
'Bathing Girl', 1921

H. 19 cm. Execution: StPM Meissen, presumably 1948. Böttger stoneware. Bottom marked: Swords, A 1039, 43, date mark (stamped).
Image online.
€ 120 - 150

346

Rosenthal branch factory, Selb
'Large lying German Shepherd, c. 1930

H. 17 cm, 45 x 26 cm. Earthenware, dark red glaze. Marked: Seal mark, 84 (embossed), remnant of a paper label.
€ 600 - 700

347

Collino
'Girl with a Letter', 1908/09

H. 28 cm. Execution: Wiener Kunstkeramische Werkstätten Busch & Ludescher. Earthenware, polychrome glaze. Base marked: 806, S (stamped).
€ 500 - 700



346



347



348

348
Emile Gallé
Cachepot, c. 1872-74

H. 20.5 cm, 30 x 23 cm. Execution: Faïencerie de St. Clément. Faïence, polychrome painting on tin glaze. Bottom marked: St. Clément (brown, handwritten), remnants of the Emile Gallé Nancy-Paris distribution label.
€ 900 - 1.200

349
Antoine-Albert Richard gen. Richard-Froment
43-piece tableware 'Parisien' 1875

1 tureen, H. 21.5 cm, 32.5 x 22 cm, 1 sauce boat with fixed plate, H. 12.5 x 25 x 15 cm, 1 footed bowl H. 11.2 cm Ø 21.5 cm, 1 large round serving platter, Ø 30.5 cm, 3 oval platters, 33.5 x 23 - 45 x 31.5 cm, 1 small oval platter with base, H. 4 x 24.8 x 13.8 cm. 15 dinner plates, 9 soup plates, 11 cake plates, Ø 22.5-25.5 cm. Execution: Barluet & Cie., Creil. Earthenware, polychrome on cream-white, with gold. Signed in the decoration: From. Richard. Base marked: Manufacturer's mark (black glaze stamp).
Some of the plates' motifs are duplicated. Only a few abrasions or shallow nicks are present.
€ 3.400 - 3.800



349



350

350
Lucien Lévy-Dhurmer
Unique owl vase, c. 1890

H. 31.5 cm. Stoneware, green-gold luster glaze. Bottom signed: DELPHIN MASSIER VALLAURIS (AM). The owl's left ear has been reattached. Glaze flaking above the stand. From the Lévy-Dhurmer family.
Exh. cat. *Autour de Lévy-Dhurmer Visionnaires et Intimistes* en 1900, Grand Palais, Paris 1973, No. 56 (identical).
€ 4.400 - 5.500

351
Ernest Carrière
Vase 'Lierre', c. 1900

H. 18.5 cm. Stoneware, relief ivy decoration, gray-blue high-firing glaze. Bottom signed: ET Carrière, G (black, handwritten).
€ 700 - 800



351

352
Emile Muller, Ivry
Relief 'Bacchanal', c. 1900

17.4 x 4.0 cm. Stoneware, cream-white glaze. Back marked: MULLER IVRY (embossed). Image online.
€ 400 - 500



353

353
Jean-Léon Mayodon
Schale 'Chevreuil', um 1930

H. 4.8 cm, Ø 17 cm. Faïence, green-black on the outside, glazed white and eosin red on the inside. Bottom marked: artist's signet.
€ 900 - 1.000



354

354
Emile Decoeur, Paris
Tall vase, c. 1903

H. 44 cm. Stoneware, spotty green and brown glaze on a black background. Marked: E. Decoeur (lettering); collection label. Retouching to the edge of the stand and the lip.
Provenance: From the collection of Maria and Hans-Jürgen Heuser, Hamburg, no. 6065.
€ 1.500 - 2.500

355
Delphin Massier, Vallauris
Tall vase 'Iris', before 1908

H. 50.5 cm. Faïence, luster glaze in violet and green. Marked: DM VALLAURIS AM (Lustre). Cat. Massier, *Musée de la Céramique, Vallauris 2000*, S. 149.
€ 2.000 - 2.400



355

356
Jean Luce, Paris
13-piece tea service, c. 1930

Teapot, sugar bowl, and 5 cups with saucers. H. 4.8-12 cm; Ø 21.5 cm. Earthenware, cream-white glaze. Marked: Workshop stamp MADE IN LUXEMBOURG, T9, T11 (embossed). An extra saucer. Image online.
€ 600 - 800



357
Max Laeuger, Kandern
Vase 'Gold Mosaic', c. 1906
 H. 21.7 cm. Majolica, light green and black glaze on a white background, triangular recesses covered with gold foil. Bottom marked: MLK GESETZL. GESCHZT, MUSTER GESETZL. GESCHTZT (stamped), 371 4 (incised). Lip rubbed.
€ 1.200 - 1.600

358
Max Laeuger
'Plate (Flowers)', c. 1910
 H. 4 cm, Ø 22 cm. Majolica, light green slip on dark blue background. Marked: MLK GESETZL. GESCHZT., MUSTER GESETZL. GESCHTZT. (stamped), 552 (incised). Image online.
€ 200 - 240

359
Richard Riemerschmid
Beer jug, 1902
 H. 24.2 cm. Execution: Reinhold Merkelbach, Grenzhausen. Stoneware, brown salt-glazed, black overlays. Base marked: manufacturer's mark, RIEMERSCHMID 1758 (stamped), I (incised).
€ 600 - 700

360
Auguste Papendieck, Bremen
Set of 3 bowls, 2 vases and 3 plates, c. 1930
 H. 4.8-16 cm, Ø 7.7-16.2 cm. Earthenware, polychrome glaze. Bottoms marked: AP ACHTERDIEK b. BREMEN (stamped). One vase with a chip below the lip.
€ 600 - 700

361
Carl Sigmund Lubner
Tray, c. 1900
 H. 6 cm, 51.5 x 36 cm. Earthenware, thread relief, polychrome glaze. Swan in a pond. Bottom marked: R CN 1086 (stamped), A XIII (black, handwritten). Silver-plated metal mount.
€ 800 - 900

362
Joseph Maria Olbrich
Vase, c. 1901
 11.5 cm. Execution: Wächtersbacher Steingutfabrik, Schlierbach. Earthenware, glazed blue on white. Bottom marked: 217 (stamped). Image online.
€ 400 - 500

363
Art Department Christian Neureuther
Box, 1910
 H. 11.5 cm, 21 x 12.5 cm. Earthenware, polychrome glaze, metal mount. Bottom marked: Art Department signet, indistinct numerals, B (glaze stamp), shield 2838/1, DTCE (stamped). Image online.
€ 450 - 550

364
Class of Henry van de Velde
Vase, c. 1910
 H. 20.3 cm. Earthenware, alkali-white running glaze over olive brown. Base marked: 500 (stamped and black).
€ 800 - 1.200

365
Amphora-Werke Riessner & Kessel, Trnovany-Teplice
Vase, c. 1906
 H. 26.5 cm. Earthenware, polychrome enamel with gold. Bottom marked: AMPHORA AUSTRIA crown, 15145 (stamped), 17 (black, handwritten).
€ 500 - 600

366
Leopold Forstner; Gustav Klimt
Butterfly, part of the mosaic for the Palais Stoclet, 1909-1911
 3.5 x 6.2 cm. Execution: Leopold Forstner Mosaic Workshop, Vienna. Stoneware, blue glaze. Marked: X (incised).
€ 800 - 1.000



367
Michael Powolny
Bowl with putto, c. 1907
 H. 21.2 cm, Ø 21.7 cm. Execution: Wiener Keramik. Earthenware, polychrome glaze on white. Bottom marked: Signet of Wiener Keramik, artist's signet.
€ 1.400 - 1.600

368
Michael Powolny
Flower pot with four putti reliefs, 1907
 H. 9.2 cm. Execution: Wiener Keramik. Earthenware, relief-decorated, polychrome glaze. Bottom marked: Wiener Keramik signet, artist's signet PM, 107 (stamped), /a (black, handwritten).
€ 500 - 600



369
Bertold Löffler
Covered vase 'Bird', 1910
 H. 9.9 cm. Execution: Wiener Keramik. Earthenware, polychrome glaze. Marked: Artist's signet Lö, mark of Wiener Keramik (embossed).
 mak.at Inv.-No. WWF 89-40-7.
€ 2.000 - 3.000

370
Vilmos Zsolnay, Pécs
Vase with female figure, c. 1900

H. 20 cm. Execution between 1918 and 1940. Earthenware, green-yellow eosin glaze. Bottom marked: manufacturer's mark MADE IN HUNGARY (white glaze stamp), ZSOLNAY PECS 6518 (stamped). The model is depicted in a photo of Zsolnay's stall at the World Exhibition in Paris in 1900.
€ 2.000 - 3.000

371
Vilmos Zsolnay, Pécs
Shell-shaped vase with female figurine, 1900

H. 13 cm. Execution between 1925 and 1970. Earthenware, green-yellow eosin glaze. Bottom marked: manufacturer's mark, MADE IN HUNGARY (gold glaze stamp), 6252 E (stamped). Right foot restored.
€ 1.200 - 1.500

372
Vilmos Zsolnay, Pécs
Large cachepot, c. 1900

H. 37 cm, 37.5 x 44 cm. Earthenware, relief decoration depicting a lady in a tree-lined lake landscape. Base marked: seal mark, 6301 10 (stamped). Two continuous, long, vertical hairline cracks.
€ 5.000 - 6.000



372

373
William Zsolnay, Pécs
Female figure with two baskets, c. 1903

H. 36 cm. Earthenware, gold-green eosin glaze. Bottom marked: seal mark, 7238 (stamped, slightly indistinct). Outer handle of one basket reglued.
€ 1.000 - 1.400

374
Vilmos Zsolnay, Pécs
Prize cup 'Galopprennbahn in der Freudenau', c. 1908

H. 31 cm, Ø 29 cm. Earthenware, yellow-green exterior, red interior eosin glaze. Included: Wooden base: H. 17.5 cm, Ø 33 cm. Wood, lacquered black and red, with losses. The trophy is depicted on a Hungarian Post stamp commemorating the 150th anniversary of the manufactory in 2004.
€ 5.000 - 6.000



373



374

IMPRESS

MANAGEMENT

Askan Quittenbaum

Managing director and CEO,
Auctioneer
Art Nouveau and Art Deco,
Murano Glass, Jewelry
+49 89 273702-113
a.quittenbaum@quittenbaum.de

Dr. Claudia Quittenbaum

Deputy CEO
PR, Murano Glass
+49 89 273702-111
c.quittenbaum@quittenbaum.de

Arthur Floss Dipl. Betriebswirt FH

Deputy CEO
Head of department Modern Design
+49 89 273702-110
a.floss@quittenbaum.de

EXPERTS

Faridah Younès M.A.

Head of department Art Nouveau
and Art Deco
+49 89 273702-115
f.younes@quittenbaum.de

Nadine Becker M.A.

Head of department Studio
and Art Jewelry
Tel. 089-273702-118
n.becker@quittenbaum.de

Ava Boll M.A.

Modern Design
+49 89 273702-116
a.boll@quittenbaum.de

Laura Hille M.A.

Head of department Modern
and Contemporary Art
Tel. 089-273702-119
l.hille@quittenbaum.de

Dr. Marcus Oertel

Head of Rhineland
Representative Office
Modern Art, Decorative Arts, Asian Art
m.oertel@quittenbaum.de

Veit Volwahren M.A.

Modern and contemporary Art,
Modern Design
+49 89 273702-121
v.volwahren@quittenbaum.de

Massimiliano Cinque B.A.

Modern Design, Vintage-Accessoires
+49 89 273702-125
m.cinque@quittenbaum.de

Noel Grund B.A.

Modern Design
+49 89 273702-125
empfang@quittenbaum.de

ACCOUNTING

Annette Ehrenhardt

Head of department Accounting
+49 89 273702-117
accounting@quittenbaum.de

CATALOGUE-ORDER

Ava Boll M.A.

+49 89 273702-116
a.boll@quittenbaum.de

LOGISTIC AND SHIPPING

Dirk Driemeyer

Head of department Logistics,
Organisation
+49 89 273702-112
d.driemeyer@quittenbaum.de

M2 Logistik

+49 8121 223015
service@m2logistik.de

Mail Boxes Etc.

Vökl Service GmbH
+49 89 30 666 006
mbe2545@mbe.de

PHOTOGRAPHERS

Jochen Splett
Mirco Taliercio
Daniel Kraus

DESIGN

Daniela Paringer, design & print GbR

PRINTING AND PRODUCTION

W. Kohlhammer Druckerei GmbH + Co.
KG, Stuttgart





QUITTENBAUM

Kunstauktionen München

QUITTENBAUM Kunstauktionen GmbH

Theresienstrasse 60 · D-80333 Munich

Phone 089-27 37 0210 · Fax 089-27 37 02122

info@quittenbaum.de · www.quittenbaum.com