

QUITTENBAUM

Kunstauktionen München



DESIGN

Auction 179 A
14 October 2025





DESIGN

AUCTION 179 A

THURSDAY, 14 OCTOBER 2025

3 P.M.

**PREVIEW:
THERESIENSTR. 60**

Thursday	09.10.	10 a.m. - 6 p.m.
Friday	10.10.	10 a.m. - 6 p.m.
Saturday	11.10.	1 p.m. - 5 p.m.
Sunday	12.10.	1 p.m. - 5 p.m.
Monday	13.10.	10 a.m. - 6 p.m.

**QUITTENBAUM
Kunstauktionen GmbH**

Managing director: Askan Quittenbaum
Theresienstrasse 60 · D-80333 Munich
Phone (+49) 89-27 37 02 10
Fax (+49) 89-27 37 02 122
E-Mail info@quittenbaum.de
Opening hours: Tues - Fri
10 a.m. - 1 p.m. und 3 p.m. - 6 p.m.
and by appointment



Mitglied der Initiative
Datenbank
kritischer Werke



Bundesverband Deutscher Kunstversteigerer e.V.

1

Ettore Sottsass
Mirror object 'Ultrafragola', 1970 (design)

H. 195 x 101 x 14.5 cm.

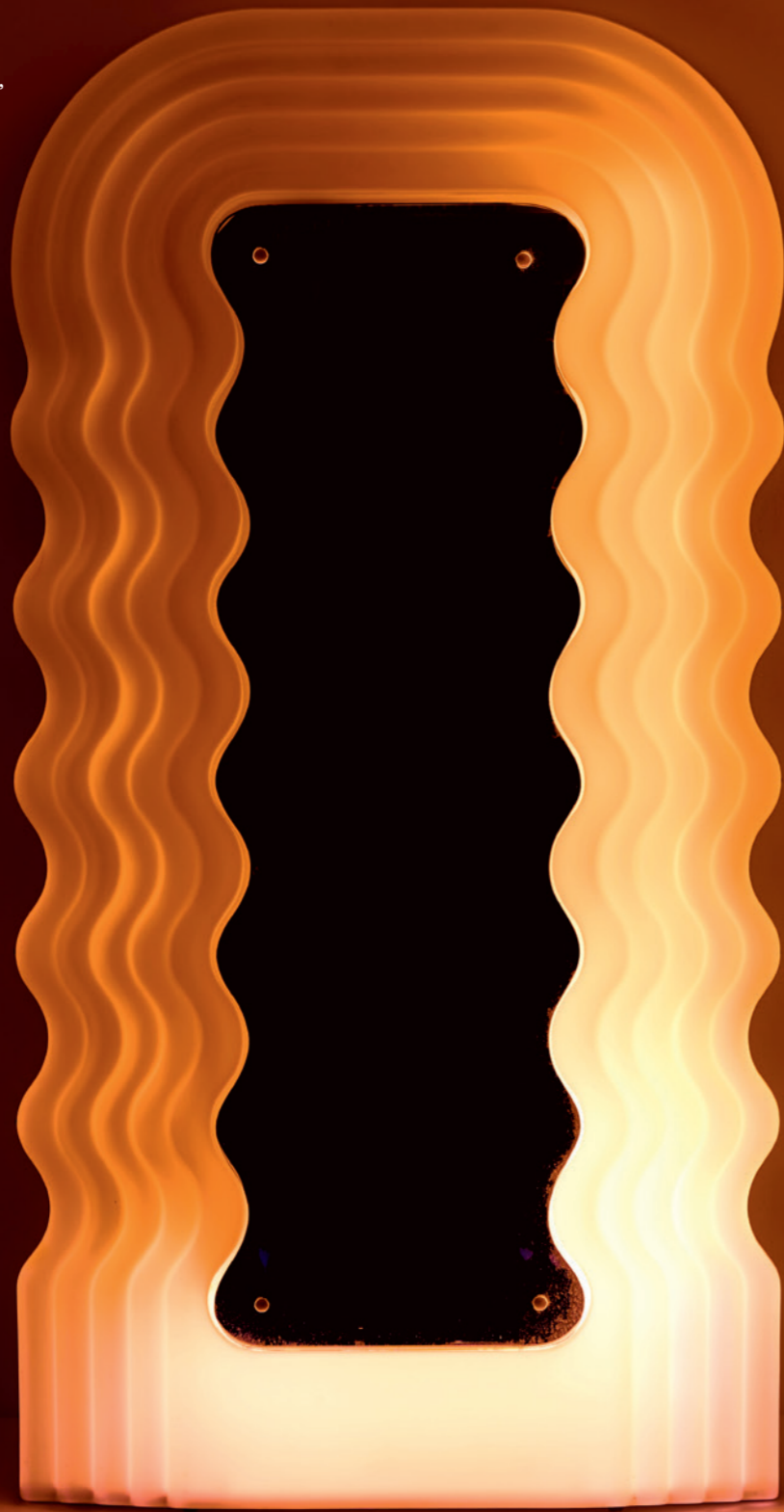
Poltronova, Pistoia.

White plastic, mirrored glass.

Marked: Manufacturer's sticker: Poltronova,
made in Italy.

Radice (ed.), Ettore Sottsass, Munich 1993, p. 135;
Exh. cat. L'Utopie Du Tour Plastique, Brussels 1994,
p. 92; Bony, Meubles et décors des années 60,
Paris 2003, p. 189f.

€ 7.000 - 9.000



2

Fabio Lenci
Two armchairs, 1966 (design)

H. 69 x 73 x 90 cm.

Comfort, Milan.

Clear glass, foam, brown leather, black plas-
tic, sheet aluminum.

Iliprandi/ Molinari, Omnibook, Udine 1985,
p. 127.

€ 5.000 - 6.000

3

**Cesare Casati; Carlo Emanuele
Ponzio**
Five 'Pillola' floor lamps, 1968

H. 55 cm, Ø 13 cm.

Nai Ponteur, Bergamo.

ABS plastic and acrylic, green, blue, yellow,
dark red and white.

Marked: Collezione nai design studio DAH.

Exh. cat. ITALY: The New Domestic Landscape,
MOMA New York 1972, p. 96; Gramigna, Re-
pertorio 1950-1980, Milan 2001, p. 279.

€ 7.000 - 8.000



3



2



4
Carlo Nason
Ceiling light 'Polpo' - 'LS 134', 1974 (design)

H. 48 cm, Ø 40 cm.
AV Mazzega, Murano.
Glass, opal and opaque white.
Chiesa, Carlo Nason, glass designer, handle with care,
Milan 2025, p. 92.
€ 3.000 - 3.500



5

6
Wolfgang Feierbach
Three armchairs 'FG 2008', c. 1970 (design)

H. 71.5 x 63 x 72 cm.
FG Design Wolfgang Feierbach, Altenstadt.
White plastic, houndstooth textile cover.
Marked: Manufacturer's and designer's information (embossed).
€ 800 - 1.000

5
Gaetano Pesce
Armchair 'UP 1', 1969 (design)

H. 62 x 96 x 90 cm.
B&B Italia, Novedrate, Como.
Foam, red textile cover, black rubber.
Marked: Artist's signature (black felt-tip pen).
Gramigna, Repertorio 1950-1980, Milan 2001, p. 155.
€ 1.000 - 1.200



6



7
Bernard Rancillac
Sculpture 'Elephant Chair', 1966 (design)

H. 114 x 140 x 149 cm.
Michel Roudillon, in 1985.
Red fiberglass-reinforced polyester, sectional steel, painted black.
Marked: artist signature, 17/100.
Greenberg, Op to pop, Boston 1999, p. 103; Bony, Furniture and decor of the 60s,
Paris 2003, p. 185.
€ 5.500 - 6.500

8
Cesare Casati; Carlo Emanuele Ponzio
Floor and table lamp 'Disco', 1966

Ø 55 cm.
Harvey Guzzini, Milan.
Acrylic, orange and white.
€ 1.200 - 1.800

9
L & O Design; Roberto Lucci; Paolo Orlandini
Library ladder 'Scaleo', 1974 (design)

H. 131 x 20 x 8 cm; unfolded: H. 124 x 40 x 67 cm.
Velca, Milan.
Plastic, red, aluminum, stainless steel.
Marked: Manufacturer and designer's information (embossed).
€ 300 - 350



8



10

10
Gae Aulenti
Table light 'Pipistrello - 620', 1966 (design)

H. 68 - 84 cm, Ø 51 cm.
Martinelli Luce, Lucca.
Black aluminum base, telescopic chrome-plated metal stem,
white methacrylate lampshade.
Marked: Manufacturer's mark with designer information.
Height adjustable.
€ 1.000 - 1.500



9



11

11
Gruppo Strum; Giorgio Ceretti;
Pietro Derossi; Riccardo Rosso
Seating object 'Puffo', 1968
(design)

H. 47 cm, Ø 53 cm.
Gufam, Balangero, 2010s.
Polyurethane foam, with red Guf lacquer.
Marked: gufram PUFFO.
Included: Certificate of authenticity from
Gufam.
€ 450 - 500

12
Mario Bellini
Stereo system with record player
'RR 130 Fo/St - Totem', 1970

H. 53 x 51 x 52 cm.
Brionvega, Milan.
Wooden box construction, lacquered white,
white plastic.
Marked: Manufacturer's designation.
Included: operating instructions for the
system and record player.
DUAL '1218' record player.
Albini / Rosetti, The design of Brionvega,
Mailand 2001, p. 26.
€ 2.800 - 3.200



12



13

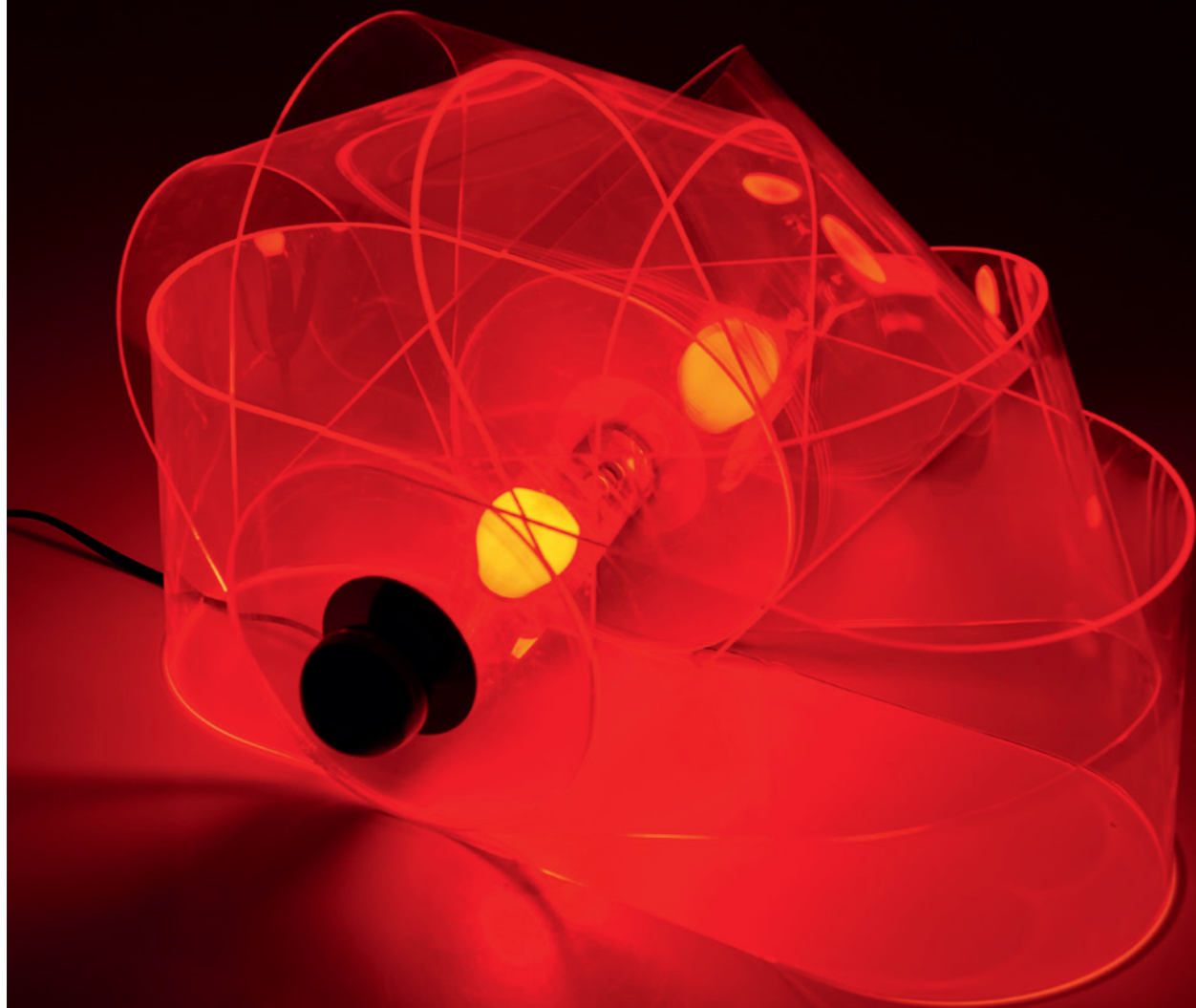
13
Gianni Colombo
Two 'GEA' table lights, c. 1970

H. 14 cm.
Arredoluce, Monza.
ABS plastic, red, yellow, white and clear.
Marked: Manufacturer and designer's infor-
mation.
€ 900 - 1.500

14

Superstudio; Adolfo Natalini; Cristiano Toraldo di Francia; Roberto Magris; Piero Frassinelli; Alessandro Magris
Table light 'Gherpe', 1967 (design)

H. 42 cm (max.).
Poltronova, Pistoia.
Chrome-plated sheet metal, neon red plastic, black plastic.
Marked: Poltronova manufacturer's label.
Very early version.
Ferrari, Light, Turin 2002, no. 154; exh. cat. L'Utopie Du Tout Plastique, Brussels 1994, p. 93.
€ 2.800 - 3.500



15
Joe Colombo
Table light 'KD-24', 1964
H. 14.5 cm, Ø 11 cm.
Kartell, Noviglio.
White and dark brown plastic, chrome-plated sheet metal.
€ 450 - 500



16
Enzo Mari
Three Vases 'Pago Pago - 3087', 1969
H. 30 cm.
Danese, Milan.
ABS plastic, green, blue, and violet.
Marked: Manufacturer's mark.
€ 650 - 700

17
Luigi Colani
Two armchairs, c. 1968
H. 63 x 90 x 90 cm.
Kusch & Co., Hallenberg.
Chrome-plated metal tubing, orange-red textile cover.
€ 2.000 - 2.500



18

**Verner Panton
Three wall/ceiling elements 'Ring', 1969/70 (design)**

H. 21 x 61.5 x 61.5 cm.
Louis Poulsen, Copenhagen.
Acrylic, colorless, blue, red, and dark violet.

Provenance: The following lot numbers (19, 22, 25, 27, 29, 30-34) all originate from a party cellar designed and furnished by Verner Panton for a private client in the early 1970s. The client was fascinated by the living spaces created by Panton for Visiona I and II and therefore specifically selected these colorful, psychedelic, fantastical living landscapes for his 400-square-meter party cellar in his home in a quiet residential district of Vienna. The bar was closed down after the owner's death a few years ago; the remaining furniture and lighting went to his heirs. Viennese photographer Stefan Oláh was able to photograph this little-known work of art in 2019 for his exciting and highly informative photo book on 1970s Austrian architecture (Colorful, Social, Brutal), thus preserving it digitally for eternity.

Verner Panton's fabrics were used in this futuristic setting as wall coverings, tablecloths, and partition walls; the 'Ring Lights' achieved cult status through their use in the legendary Spiegel publishing house canteen. The furniture pieces from the 'Welle' series were only produced in very small series and are extremely rarely offered on the secondary market.

Without the light unit. Two elements are slightly damaged.
Exh. cat. Verner Panton, Vitra Design Museum, Weil am Rhein 2000, p. 290.
€ 4.000 - 5.000



19

**Verner Panton
Fabric panel, around 1972 (design)**

558 x 165 cm.
Mira-X, Suhr.
Cotton velvet, multicolored.
Marked: Manufacturer and designer information.
From the party cellar decorated by Verner Panton.
€ 700 - 900



19



20

20

**Verner Panton
'123' armchair, 1973/74 (design)**

H. 86 x 59.5 x 58.5 cm.
Fritz Hansen, Allerød.
Tubular metal, chrome-plated, aluminum sheet, red textile cover.
€ 600 - 800



21

21

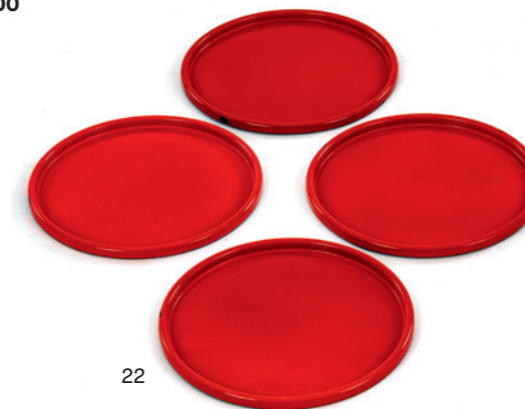
**Verner Panton
Chair 'Panton chair', 1962/67 (design)**

H. 81.5 x 50 x 58 cm.
Vitra, Birsfelden.
Baydur plastic, brownish-beige.
Early version.
€ 450 - 500

22

**Verner Panton
Four Trays, 1969 (design)**

Ø 27 cm.
Emaillerie Corgémont, Corgémont, Switzerland.
Sheet metal, red enamel.
With signs of age and wear.
From the party cellar decorated by Verner Panton.
€ 450 - 600



22



24

23
Ernst Moeckl
Ten chairs 'z.stuhl', c. 1968 (design)

H. 84 x 62/50 x 57 cm.
 Pestel, Chemnitz, c. 2022.
 Plastic (polyurethane foam) orange, green, yellow, blue, violet and pink.
 Almost mint condition; from the new production that resumed in 2020.
€ 3.000 - 3.500



23



25

24
Verner Panton
Armchair '123', 1973/74 (design)

H. 87 x 61 x 83 cm.
 Verpan, Copenhagen, 2020s.
 Cast aluminum, cream-white bouclé fabric. Marked: Manufacturer's information, artist's signature (embossed).
 Exh. cat. Verner Panton, Vitra, Weil / Rhine 2000, p. 265.
€ 1.300 - 1.500

25
Verner Panton
Fabric panel 'Curve', 1969 (design)

530 x 170 cm.
 Mira-X, Suhr.
 Cotton velvet, pink.
 Marked: Manufacturer and designer's information.
 From the party cellar decorated by Verner Panton.
€ 700 - 900



26

26
Verner Panton
'Fun 2 WM' sconces, 1964

H. 43 cm, Ø 32 cm.
 J. Lüber AG, Basel.
 Metal, mussel platelets.
€ 500 - 600

27
Verner Panton
Lounger with ottoman from the 'Welle' series, 1969/70

Lounger: H. 61 x 150 x 52 cm, stool: H. 40 cm, Ø 45 cm.
 Metzeler Schaum, Munich.
 Cold foam molded parts, violet textile cover, partially covered in black leather on the underside.
 Exh. cat. Verner Panton, Vitra Design Museum, Weil/Rhine 2000, p. 258.
 From the party cellar decorated by Verner Panton.
€ 5.000 - 6.000



27



29

28
Verner Panton
Two 'Panton' chairs, 1962/67 (design)

H. 82 x 49 x 60 cm.
 Vitra, Birsfelden.
 Red and orange plastic.
 Marked: Red chair with manufacturer's label, facsimile signature Verner Panton.
€ 600 - 700

29
Verner Panton (attributed)
Two snack bowls, c. 1971

H. 6 cm, Ø 41 cm.
 Horlacher AG, Möhlin, Switzerland (ATTR.).
 Plastic, red.
 With seven molds each (Ø 10.5 cm) for serving snacks.
 From the party cellar decorated by Verner Panton.
€ 320 - 450



28

30
Verner Panton
Fabric panel 'Curve', 1969 (design)

402 x 39.5 cm.
 Mira-X, Suhr.
 Cotton velvet, pink.
 Marked: Manufacturer and designer's information.
 From the party cellar decorated by Verner Panton.
€ 300 - 400



30



31

31
Verner Panton
Fabric panel 'Curve', 1969 (design)

563 x 192 cm.
 Mira-X, Suhr.
 Cotton velvet, multicolored.
 Marked: Manufacturer and designer information.
 From the party cellar decorated by Verner Panton.
€ 700 - 900

32
Verner Panton
Fabric panel 'Curve', 1969 (design)

302 x 156 cm.
 Mira-X, Suhr.
 Cotton velvet, pink.
 Marked: Manufacturer and designer information.
 From the party cellar decorated by Verner Panton.
€ 600 - 700



33



32

33
Verner Panton
Fabric panel 'Curve', 1969 (design)

1005 x 280 cm.
 Mira-X, Suhr.
 Cotton velvet, multicolored.
 Marked: Manufacturer and designer information.
 Processing into a wall curtain.
 From the party cellar decorated by Verner Panton.
€ 800 - 1.200

34
Verner Panton
Fabric panel 'Curve', 1969 (design)

260 x 101 cm.
 Mira-X, Suhr, 1972.
 Cotton velvet, multicolored.
 Marked: Manufacturer and designer information.
 From the party cellar decorated by Verner Panton.
 Image online.
€ 300 - 400

36



35
Paul Bay
Five anthroposophical chairs and two stools, 1940s

Chairs H. 86 x 45 x 50 cm; stool H. 45.5 x 46 x 41 cm.
Kunstschnitzwerkstatt Dornach (attributed).
Beechwood, elm, dark glazed.
Marked: Address stamp of a previous owner on the underside.
Cf. Reinhold J. Fäth, Dornach Design. Möbelkunst 1911-2011.
Dornach 2001. p. 101, fig. 225.
€ 6.000 - 7.000

36
Felix Kayser
Two anthroposophical 'K 1247' chairs, 1930s

H. 86.5 x 41 x 48.5 cm.
Schiller Möbel Stuttgart.
Rüsterwood, orange-red textile cover.
€ 1.500 - 1.800

37



37
Rudolf Steiner (Circle)
Collection of anthroposophical objects, 1930-1950

Bowl: H. 3.5 x 36.5 x 12.5 cm, picture frame: H. 25 x 18 x 6 cm, small candlestick: H. 5.5 x 4.5 x 4.5 cm, card stand: 2 x 13 x 3 cm.
Kunstschnitzwerkstatt Dornach, Dornach (attributed).
Carved wood.
Marked: Picture frame and candlestick with a 'G'.
€ 700 - 900

39



39
Michael Thonet
Chair '47', 1911

H. 85 x 50 x 48 cm.
Thonet, Vienna.
Beechwood, bentwood, stained brownish; Moulded plywood.
Marked: THONET AUSTRIA, manufacturers sticker Thonet Vienna.
€ 700 - 800

40
Sweden
Two 'Munk' armchairs, 1930/40s

H. 82-85.5 x 58 x 52.5 cm.
Oak, turned and carved, textile/wool covering.
€ 500 - 600

35



38
Imme von Eckhardstein
Anthroposophical drawing, c. 1912

23.5 x 17 cm (image), 36.3 x 28 cm (frame).
Colored pencil on vellum.
Signed lower right: Imme v. Eckhardstein (pencil).
Framed under glass. Not deframed.
Image online.
€ 300 - 400

40



41
Sweden
Sideboard / cupboard, c. 1945

H. 135 x 96 x 42 cm.
 Wooden box construction, mahogany wood and mahogany veneer, covered with plant illustrations from the book 'Nordens Flora' by CAM Lindman.
€ 3.500 - 5.000



41

42
Josef Frank
Two '2424' floor lights, 1939

H. 176 cm, Ø 23.5 cm.
 Svenskt Tenn, Stockholm.
 Tubular brass, sheet brass, sand-colored fabric shade.
 Marked: SVENSKT TENN 2424-2, labels: S.
 Light shades replaced.
€ 3.000 - 4.000



42

43
Josef Frank
'2560' ceiling light, 1930s

H. 70 cm, Ø. 50 cm.
 Svenskt Tenn, Stockholm.
 Tubular brass, sheet brass, crème-white fabric, floral décor.
 Marked: MADE IN SWEDEN.
€ 400 - 500



43

44
Josef Frank
Folding table, c. 1930

H. 64 x 85 x 85 cm.
 House and Garden, Vienna.
 Birch wood, stained dark, blockboard with curly birch veneer.
€ 1.800 - 2.200



44

45
Josef Frank (attributed)
Table lamp, 1940s

H. 37 cm.
 Reijmyre Glass, Reijmyre for Svenskt Tenn, Stockholm (attributed).
 Glass, colorless, blown with air inclusions, brass tube, red textile shade.
€ 500 - 600

46
Josef Frank
Table light, c. 1953

H. 33 cm, Ø 27.5 cm.
 Reijmyre Glass, Reijmyre for Svenskt Tenn, Stockholm.
 Glass, colourless, blown with air inclusions, brass tube, textile shade.
 Marked: Manufacturer's sticker.
€ 550 - 600



45



46

47

Gerrit Rietveld
'Red and blue' chair, 1918

H. 88,5 x 65,5 x 82,5 cm.

G.A. van de Groenekan, De Bilt (attributed).

Wood, plywood, painted red, blue, yellow and black.

Provenance: originally owned by the Bruno Danese family, Milan, then by a design retailer, Milan. The chair was purchased directly from Metz & Co., Amsterdam, in 1970. A copy of the original invoice is available.

Küper/van Zijl, Gerrit Th. Rietveld: The Complete Works, Utrecht 1992, p. 35.

€ 5.000 - 6.000



48

Marcel Breuer
Typewriter table 'B-21/1', 1930/31 (design)

H. 67 x 92 x 47.5 cm.
Thonet, Frankenberg.
Tubular steel, nickel-plated sheet metal, black lacquered blockboard.
Marked: Manufacturer's mark.
Vege sack, Deutsche Stahlrohrmöbel, Munich 1986, p. 85.
€ 1.500 - 2.500



48

49

Le Corbusier; Pierre Jeanneret; Charlotte Perriand
Armchair 'LC 1', 1928 (design)

H. 66 x 70 x 67.5 cm. Tube: Ø 1.5-3 cm.
Made by Heidi Weber, Zurich (attr.), c. 1959.
Tubular steel, nickel-plated, black leather.
Distinct signs of wear.
Rüegg, Le Corbusier, Möbel und Interieurs, Zurich 2012, p. 279
(model from 1932).
€ 1.800 - 2.500

50

Gyula Pap
Floor lamp 'B ST 23', 1923 (design)

H. 167 cm, Ø 38 cm.
Tecnolumen, Bremen, 1990s.
Metal tube, chrome-plated sheet metal, black lacquered metal plate,
clear and frosted glass, black plastic.
Marked: Manufacturer's sticker.
€ 700 - 800



50



51

51

Marcel Breuer
Display case 'S 40', 1925 (design)

H. 164.5 x 80 x 80 cm.
Tecta Lauenförde, 1980s.
Square timbers and plywood boards,
painted black and white, clear glass.
Two later installed lighting fixtures
inside.
From the Otto Bantele Collection.
€ 1.200 - 2.000



52

52

Bünthe & Remmler, Frankfurt
Ceiling light, c. 1925

H. 8 cm, Ø 25.5 cm.
Earthenware, glazed white, white glass.
Marked: BuR manufacturer's mark
(green glaze stamp).
€ 500 - 600



49

53

Ludwig Mies van der Rohe
'MR 20' armchair, 1927 (design)

H. 84.5 x 55 x 84 cm; Tube: Ø 2.5 cm.
Thonet, Frankenberg (attributed).
Tubular steel, chrome-plated, plugged and
screwed, medium blue leather; one expansion
bracket: square tube, chrome-plated,
inserted.
Leather replaced, some of the screws added.
Cf. Vege sack, Deutsche Stahlrohrmöbel,
Munich 1986, p. 106, p. 114; Cf. Exh. cat. Mies
van der Rohe, Vitra Design Museum, Weil/
Rhine 1998, p. 30 f., p. 36.
€ 1.200 - 2.000



53

54

Embru Works, Rüti
Armchair 'Sitzmaschine' with Ottoman, 1936 (design)

Armchair: H. 78-99 x 85-112 cm, Ottoman: H. 41 x 51 x 52 cm.
Embru-Werke, Rüti.
Chrome-plated tubular steel, beechwood, dark gray textile cover with yellow piping.
Included: additional light green textile cover with anthracite piping.
€ 2.200 - 3.000



54

55

Erich Dieckmann (attributed)
Armchair, 1930s

H. 85.5-88.5 x 58 x 66-74 cm.
Weimar University of Architecture, Weimar.
Oak, glazed dark, rattan weave, brass.
Marked: branded with Bauhochschule Weimar stamp.
Seat adjustable.
€ 1.000 - 2.000



55

56

Kooperativa Förbundet Interiör (KF), Stockholm
Armchair 'Deck chair - Villa', 1930s/40s

H. 60-90 x 68 x 84-128 cm.
Sweden.
Beechwood, lacquered black, brass rod, brass sheet, black and white fabric.
Backrest adjustable.
€ 900 - 1.200



56



57



58

57

Peter Keler (attributed)
Children's chair, 1930s

H. 82 x 41 x 57 cm.
Albert Walde, Waldheim (attributed).
Plywood, painted cream and brown.
€ 550 - 600

58

Jindrich Halabala
'H-91' cantilever chair, 1931

H. 83 x 59.5 x 85 cm; Tube: Ø 2.5 cm.
Spojene UP Zavody, Hodonin.
Tubular steel, chrome-plated, wood, stained dark, red iron yarn cover.
Chatrny, Jindrich Halabala, Brno 2003, p. 90; Mačel, 2100 metal tubular chairs, Rotterdam 2006, p. 145.
€ 1.600 - 2.000

59

Mariano Fortuny y Madrazo
Floor lamp 'Fortuny', 1907 (design)

H. 195 cm (max.), Ø 95 cm.
Pallucco, Rome, 1990s.
Tubular metal, sheet metal, lacquered black and silver, partially chrome-plated, brownish and white textile.
€ 1.200 - 1.500



59

60

**Karl Trabert
Table light, c. 1930**

H. 45, Ø .33,5 cm.
Made by Schanzenbach & Co., Frankfurt.
Cast iron, sheet metal, painted black, sheet aluminum, tubular aluminum, wood, painted black, white plastic.
€ 700 - 800



61

**Le Corbusier; Charlotte Perriand; Pierre Jeanneret
Two-seater sofa 'LC 2', 1928 (design)**

H. 68 x 130 x 69 cm.
Cassina, Milan.
Chrome-plated tubular steel, black wool felt.
Marked: Manufacturer's mark LC 2 023076, facsimile signature Le Corbusier (embossed).
Exh. cat. Charlotte Perriand, CGP, Paris 2005, p. 12, 151.
€ 2.200 - 3.000



62

**Le Corbusier; Charlotte Perriand;
Pierre Jeanneret
Two armchairs 'LC 2', 1928
(design)**

H. 70 x 76 x 71 cm.
Cassina, Milan.
Chrome-plated tubular steel, black wool felt.
Marked: maker's mark, LC2, Nos. 023130 and 0231128; facsimile signature of Le Corbusier.
€ 3.000 - 4.000



63

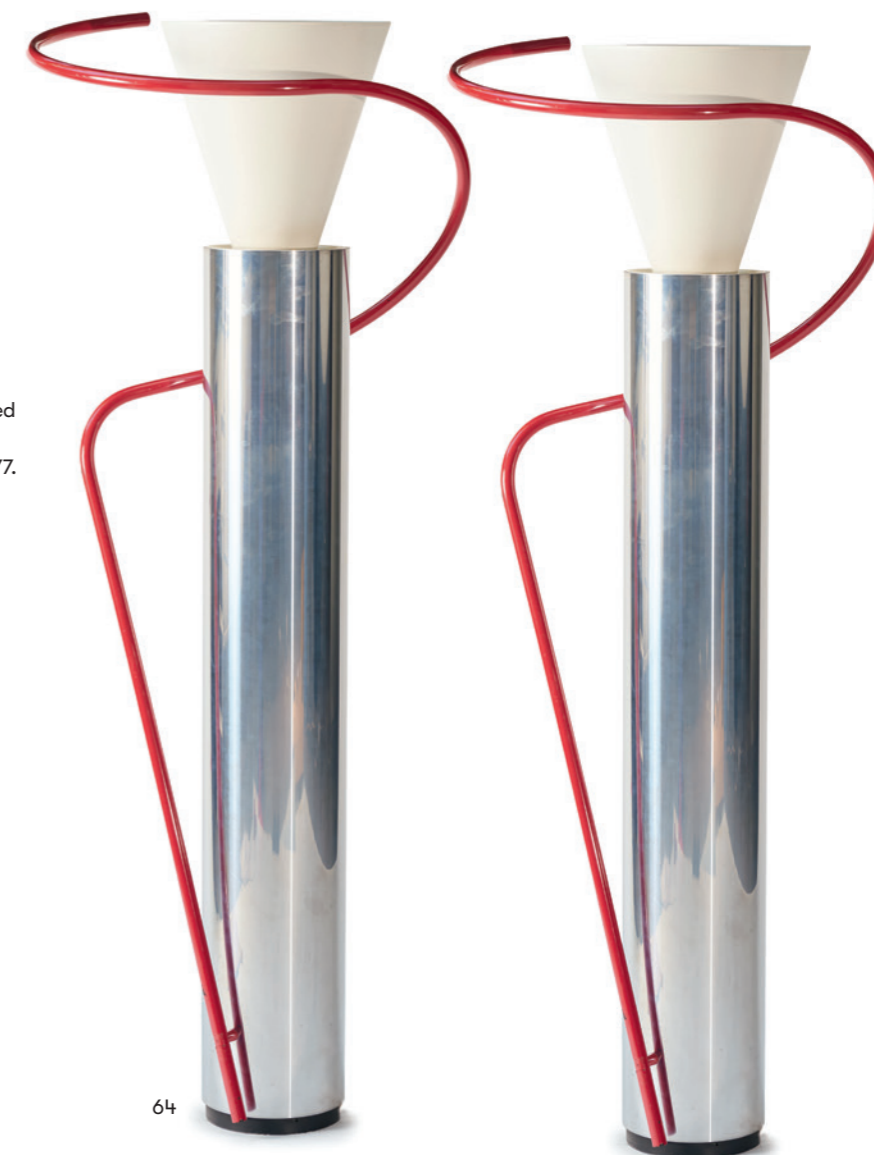
**Le Corbusier; Charlotte Perriand;
Pierre Jeanneret
Two 'LC 1' armchairs, 1928 (design)**

H. 65.5 x 60 x 64 cm.
Cassina, Milan, 1980s.
Chrome-plated tubular steel, black leather.
Marked: embossing, LC/1, numbered 36982 and 37060, Le Corbusier.
Rüegg, Le Corbusier, Möbel und Interieurs, Zurich 2012, p. 279 (model from 1932).
€ 1.800 - 2.500

64

**Luciano Baldessari
Two floor lamps 'Luminator Barcelona',
1929 (design)**

H. 192 x 76 x 68 cm.
Luceplan, Milan, circa 1993.
Stainless steel sheet, white painted sheet metal, red painted tubular metal.
Fiell, 1000 Lights, vol. 1, Cologne 2005, pp. 276-277.
€ 3.500 - 4.500 (Regular taxation)



65

**Le Corbusier; Charlotte Perriand; Pierre Jeanneret
Two-seater sofas 'LC 2', 1928 (design)**

H. 70 x 136 x 76 cm.
Cassina, Milan, c. 1993.
Metal tube, painted dark red, gray textile cover.
Marked: manufacturer's mark, LC 2, No. 66513, facsimile signature Le Corbusier.
€ 1.500 - 2.000 (Regular taxation)



65

66

**Le Corbusier Charles-Édouard Jeanneret-Gris;
Charlotte Perriand; Pierre Jeanneret
Table 'LC 6', 1928 (design)**

H. 70 x 85 x 225 cm.
Cassina, Milan, probably 1980s.
Black lacquered tubular metal, black lacquered ash wood.
Marked: maker's mark (embossed), LC 6 No. 27868, embossed Le Corbusier signature.
€ 500 - 700



66

67

**Jean-Michel Frank
Table light 'Croisillon', 1928 (design)**

H. 50 cm, Ø 34 cm.
Ecart International, Paris, 2020s.
Walnut wood, brass tube, brass sheet, white fabric shade.
Marked: Manufacturer's sticker.
€ 800 - 900



67

68

**Germany
Sofa, 1930s**

H. 66 x 191 x 88 cm.
Tubular steel, chrome-plated, Alcantara cover, dark blue.
Fabric replaced.
Provenance: Collection of Prof. Dr. Florian Hufnagl, then private collection Berlin.
€ 600 - 800



68

69

**Germany
Small sofa bed, 1930s**

H. 67 x 140 (190) x 70 cm.
Tubular steel, chrome-plated, sectional metal, black textile.
Provenance: Collection of Prof. Dr. Florian Hufnagl, then private collection Berlin.
€ 500 - 700



69

70

**Ercolo Barovier
Table light 'Crepuscolo', 1935**

H. 28 cm.
Barovier & Toso, Murano.
Cased glass, colorless, fused-in metallic threads, brass mount.
Without lampshade.
€ 700 - 900



70

71

**Herman A. Sperlich
Chair 'Health-chair', 1938 (design)**

H. 69 x 42 x 48 cm.
Ironite Inc., USA, 1940s.
Strip steel and plywood, painted white.
Marked: Manufacturer's label.
€ 500 - 600



71

72

**Hans Coray
Armchair 'Landi', 1938/39 (design)**

H. 75 x 52 x 65 cm.
P. & W. Blattmann, Metallwarenfabrik Waedenswil, Switzerland.
Aluminum sheet, rubber, gray.
Marked: SWITZERLAND.
€ 900 - 1.000



72

73

**Italy
Dressing table, 1940s/50s**

H. 78.5 x 151 x 84 cm.
Fruitwood, walnut, plywood, clear glass, brass sheet.
From the Otto Bantele Collection.
€ 700 - 900



73

74

**Charlotte Perriand
Table light, 1949/50**

H. 46,5 cm, Ø 13.5 cm.
France.
Tubular metal, chrome-plated sheet metal.
€ 300 - 400



74



75

75
Piero Fornasetti
Six appetizer bowls, 1960s (design)

H. 5.2 cm, Ø 7.8 cm.
 Fornasetti, Milan.
 White porcelain, glazed, with black and white lithographic decoration and gold.
 Marked: brush mark.
€ 450 - 500

76
Piero Fornasetti
Small vase 'Testa di moro', 1950s to 1960s (design)

H. 20.5 cm.
 Fornasetti, Milan.
 White porcelain, glazed, with blue overglaze.
€ 650 - 700

77
Piero Fornasetti
Eight plates from the series 'Tema e Variazione', 1950s to 2000s (design)

H. 3 cm, Ø 26.3 cm.
 Fornasetti, Milan, 2000s.
 White porcelain, glazed, black and white lithographic decoration with gold.
 Marked: brush and maker's mark, Eight plates from the series "Tema e Variazione", pattern number.
 Fornasetti (Ed.), Fornasetti The Complete Universe, New York 2021, pp. 623-643.
€ 1.500 - 1.800



77



78

78
Piero Fornasetti
Nine plates from the series 'Tema e Variazione', 1960s to 2000s

Ø 26 cm.
 Fornasetti, Milan.
 Porcelain, white, glazed, with black and white lithographic decoration.
 Marked: brush and maker's mark, 'Tema e Variazione', pattern number.
 Fornasetti (Ed.), Fornasetti The Complete Universe, New York 2021, pp. 623-643.
€ 1.200 - 1.500



76

79
Piero Fornasetti
Miniature seating group, 1950s to 1980s (design)

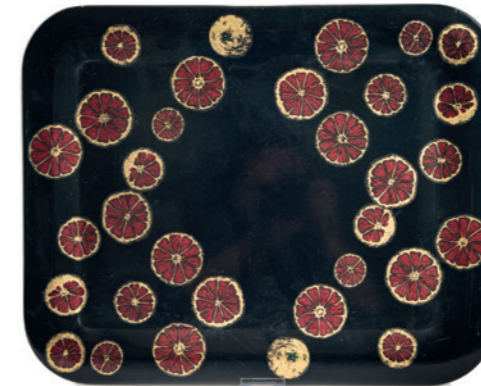
Chair: H. 23.8 - 25 x 10.3 x 12.5 cm; Table: H. 18.5 cm, Ø 30 cm.
 Fornasetti, Milan, 1990s.
 Black wood, black and white lithographic decoration.
 Marked: Manufacturer's stamp (1x), manufacturer's sticker (3x).
 Cf. Fornasetti (Ed.), Fornasetti The Complete Universe, New York 2021, pp. 385, 400-401.
€ 1.400 - 1.800



79

80
Piero Fornasetti
Tray 'Fette d'arancia', 1950s

46 x 58 cm.
 Fornasetti, Milan.
 Sheet metal, painted black, red, and green, with gold.
 Marked: brush mark.
€ 850 - 900



80



81

81
Piero Fornasetti
Tray 'Fiori', 1950s

46 x 58 cm.
 Fornasetti, Milan.
 Black lacquered sheet metal, polychrome lithographic decoration.
 Marked: Manufacturer's sticker.
€ 850 - 900

82
Piero Fornasetti
Cat 'Gatto accovacciato Mantellato', 1950s (design)

H. 13 x 31 x 18.5 cm.
 Fornasetti, Milan, 1990s.
 Porcelain, white, light blue, glazed, polychrome lithographic decoration with gold. Marked: brush mark.
 Fornasetti (Ed.), Fornasetti The Complete Universe, New York 2021, p. 565.
€ 1.300 - 1.800



82

83
Piero Fornasetti
Two large bookends 'Giano' and 'Porta', 1960s (design)

H. 20 x 15 cm.
 Fornasetti, Milan.
 Sheet metal, black, red, gold-and-black lithographic decoration.
€ 400 - 500



83



84

84
Piero Fornasetti
Two chairs 'Capitello ionico', 1980 (design)

H. 95.5 x 41 x 49 cm.
 Fornasetti, Milan.
 Wood, lacquered black, black and white printed decor.
 Marked: Manufacturer's sticker.
 Fornasetti (Ed.), Fornasetti The Complete Universe, New York 2021, p. 401.
€ 3.500 - 4.000

85
Barnaba Fornasetti
Foldable tray stand, 2007

H. 49 cm, Ø 60 cm.
 Fornasetti, Milan.
 White lacquered sheet metal with polychrome printed decor, black lacquered beechwood.
 Marked: Manufacturer's sticker, brush mark, numbered and dated "21/2007."
€ 900 - 1.200



85



86

86
Piero Fornasetti
Walking stick 'Sole', 1970s

H. 81 cm.
 Fornasetti, Milan.
 Wood, black, lacquered white, black lithograph, brass tube.
 Marked: Sticker with brush mark.
€ 350 - 400

87
Ettore Sottsass
Vase 'Voglio dire' from the 'Rovine'- series, 1992

H. 59.5 x 41.5 x 15.5 cm.
 Bitossi, Montelupo.
 Porcelain, white, glazed blue.
 Marked: Ettore Sottsass 1992, 9/9.
 Number 9 from a limited edition of 9.
 Restored muzzle.
 From the Otto Bantele collection.
 Ferrari, Ettore Sottsass: All Ceramics, Milan 1995, p. 187; Bischofberger, Ettore Sottsass. Ceramics, Zurich 1995, p. 172; Ettore Sottsass, Rovine/Ruins, Design Gallery Milan, No. 12.
€ 1.200 - 2.000

88
Sergio Asti
Vase 'Bidogale', from the 'Sixties' series, 1980s

H. 49.5 cm, Ø 17 - 22 cm.
 Vetreria Vistosi, Murano.
 Glass, red, white, colorless, and deep violet.
 Marked: S. Asti Vistosi 8/33 (incised).
 Number 8 from an edition of 33.
€ 1.500 - 1.800



87



88



89



90

89

**Ettore Sottsass
'542' vase, c. 1958 (design)**

H. 23.5 cm, Ø 23 cm.
Bitossi, Montelupo.
Earthenware, glazed white and blue.
Marked: E. Sottsass Bitossi - Montelupo (handwritten, black).
Included: original box and warranty certificate.
€ 550 - 650

90

**Ettore Sottsass
Vase '546', c. 1958 (design)**

H. 19.5 cm, Ø 25 cm.
Bitossi, Montelupo.
Earthenware, anthracite gray and black glaze.
Marked: E. SOTTASS BITOSSI - MONTELUPO (handwritten).
Included: original box and Bitossi warranty certificate.
€ 500 - 700

91

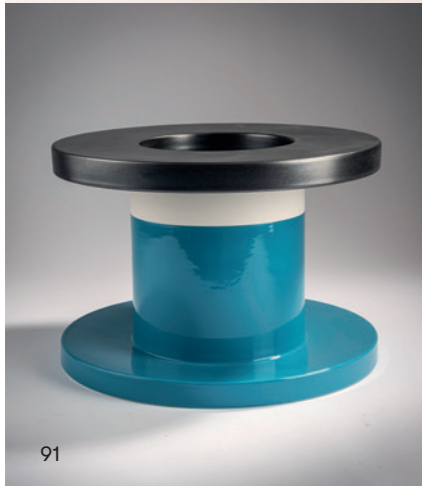
**Ettore Sottsass
'548' vase, c. 1958 (design)**

H. 20.8 cm, Ø 30 cm.
Bitossi, Montelupo.
Earthenware, glazed anthracite gray, turquoise-blue, and white.
Marked: E. Sottsass Bitossi-Montelupo (handwritten, black).
Included: original box and Bitossi warranty certificate.
€ 600 - 700

92

**Ettore Sottsass
Fruit bowl 'Camomilla' from the series 'Indian Memories', 1972 (design)**

H. 10.4 cm, Ø 33 cm.
Alessio Sarri, Sesto Fiorentino.
Earthenware, glazed yellow.
Marked: Designer and manufacturer's information.
€ 450 - 600



91



92



93



94



96

96

**Erik Höglund (ATTR.)
Seventeen-flame ceiling candlestick, 1970s**

H. 99,5 cm, Ø 69 cm.
Strömman & Co., Gothenburg, Boda Nova Glassworks (ATTR.).
Iron, forged, blackened, colorless glass.
Marked: MADE IN SWEDEN.
€ 1.000 - 1.500

93

**Ettore Sottsass
Vase 'Calice' - '502', c. 1986 (design)**

H. 47 cm.
Bitossi, Montelupo.
Earthenware, glazed white and black.
Marked: E. Sottsass Bitossi-Montelupo (handwritten, black).
€ 750 - 850

94

**Ettore Sottsass
Vase 'Rocchetto' - '503', 1986 (design)**

H. 45 cm.
Bitossi, Montelupo.
Earthenware, glazed white and black.
Marked: E. SOTTASS BITOSSI MONTELUPO (black, handwritten).
€ 750 - 850

95

**Virgil Ablon
Ceramic Block 'V-VA-444', 2019**

H. 10.5 x 28.5 x 13.5 cm.
Vitra, Birsfelden.
Earthenware, glazed orange and white.
Marked: V-VA-675, Manufacturer and designer's info (raised).
€ 900 - 1.200



95



97

97
Elio Mari
Wooden sculpture made of 11 wooden cubes, 1970s

H. 36 x 36 x 36 cm.
 Giovanni Sacchi.
 Beech wood.
 Consisting of eleven cubes that can be freely combined.
€ 2.000 - 2.500



98
Ferdinand Kramer
Paper umbrella 'Rainbelle Junior', 1948

H. 62 cm, Ø 67 cm.
 Folding Products Manufacture Corp., Long Island, New York, after 1951.
 Black lacquered wood, yellow vinyl-coated paper, yellow plastic, yellow lacquered aluminum sheet.
 Marked: Manufacturer's and designer's information (embossed).
 Breuer (Ed.), Kramer, Ferdinand Design für den variablen Gebrauch, Tübingen 2014, p. 251; Exh. cat. Das Prinzip Kramer, MAK Frankfurt 2014, np.
€ 1.200 - 1.500



98

99
Marianne Brandt
Inkwell with pen rest, 1929-32 (design)

H. 8.5 x 13 x 15 cm.
 Ruppelwerk, Gotha (ATTR.).
 Brass sheet, black lacquered wood; glass insert.
 Marked: Sales stamp ZELLER MÜNCHEN, 29.
€ 500 - 600



99

100
Marianne Brandt
Two candlesticks, 1929-32

H. 7.7 cm.
 Ruppelwerk, Gotha.
 Nickel-plated brass, black-painted wood, and brass, partially painted red and dark green.
 Marked: RUPPEL geschützt (stamp).
 Paint chips, slight dents.
 Weise, Leben und Werk von Marianne Brandt, Berlin 1995, p. 70 (text).
€ 1.000 - 1.200



100

101
Norman Bel Geddes
Medal 'To the Advancement of Motor Transportation', 1933

Ø 7,5 cm.
 Medallie Art Co., New York, 1933.
 Silver-plated Bronze.
 Marked: NORMAN BEL GEDDES © 1933, MEDALLIC ART CO. N.Y.
 Steward Johnson, American Modern 1925-1940, New York 2000, p. 127.
€ 800 - 1.200



101

The chess set by Josef Hartwig is one of the most successful products designed at the Weimar Bauhaus. In 1922, the graduate of the Munich Academy, who worked from 1921 to 1925 as a foreman in the woodworking and sculpting workshops at the Weimar Bauhaus, began to design a chess game that differed fundamentally from traditional forms. Hartwig designed the game figures from simple stereometric bodies, from cubes, cylinders and spheres. Initially, the figures were made by hand, but the goal was industrial production. Hartwig himself explained the genesis of the forms in 1924: "Pawn and rook move at right angles to the edge of the board: expressed by the die. The knight moves perpendicularly in a hook shape on four squares: four dice combined perpendicularly. The bishop moves diagonally to the edge of the board: a diagonal cross cut out of the dice. The king moves perpendicularly and diagonally: a small cube across a corner on top of a larger one. The queen, the most mobile figure, consists of a cylinder and a sphere."

(The Bauhaus chess game by Josef Hartwig, p. 8).



102

Josef Hartwig
Bauhaus chess set 'XVI', 1924

32 figurines. H. 2-4.7 cm.

Bauhaus Weimar, c.1925.

Maple wood, partially lacquered black.

In the original wooden box (elmwood). H. 6 x 12.8 x 13.5 cm. Marked:
HARTWIG BAUHAUS WEIMAR GES.GESCH.

Bauhaus-Archiv Berlin, The Bauhaus chess game by Josef Hartwig, Berlin 2006, p. 19; Hahn, Experiment Bauhaus, Dessau 1988, p. 401; Bauhaus Archive, cat., Berlin 1987, pp. 149-50, cat. no. 288; exh. cat. Bauhaus 7, Galerie am Sachsenplatz, Leipzig 1991, ill. p. 43, cat. no. 134

Das Bauhaus-Schachspiel von Josef Hartwig, p. 19; Hahn, Experiment Bauhaus, Dessau 1988, p. 401; Bauhaus-Archiv, coll. cat., Berlin 1987, p. 149-50, no. 288; exhib. cat. Bauhaus 7, Galerie am Sachsenplatz, Leipzig 1991, fig. p. 43, no. 134.

€ 9.000 - 10.000





103



104

103
Barovier, Murano (attributed)
Two door handles, 1940s

H. 35 cm.
 Brass, colorless glass.
€ 800 - 1.200

104
Archimede Seguso
Pair of door handles, 1952

H. 16 x 20 cm.
 Seguso Vetri d'Arte, Murano.
 Cased glass, red, colorless, brass.
 Franzoi, Art glass by Archimede Seguso,
 Venice 1991, p. 96, p. 159 (ill.).
€ 1.200 - 1.500



105



106

105
Barovier & Toso, Murano
Stand frame, c. 1950

H. 20 x 25.5 cm.
 Clear glass, brass sheet, brass.
 Marked: BAROVIER-TOSO MURANO
 (stamped).
€ 600 - 700

106
Barovier & Toso, Murano (ATTR.)
Stand frame, c. 1950

H. 23.5 x 20.5 cm.
 Clear glass, brass sheet.
€ 600 - 700



107



108

107
Barovier & Toso, Murano (ATTR.)
Stand frame, c. 1950

H. 25.5 x 33 cm.
 Clear glass, brass sheet.
€ 800 - 900

108
Italy
Table mirror, 1970s

H. 37 cm (open) x 37 x 29 cm.
 Glass, orange, mirror glass, brass sheet.
€ 300 - 400



109



110



111

109
Egon Eiermann
Two lanterns 'WL', 1957 (design)

H. 22.3 cm.
 Richard Süßmuth, Immenhausen.
 Colorless, mouth-blown glass.
 Two-partite.
€ 400 - 500

110
Edward Hald
'Gaal' vase, 1949

H. 14.2 cm.
 Orrefors Glasbruk, Orrefors.
 Cased glass, Graal glass technique, colorless, blue, and brown.
 Marked: ORREFORS, S. Gaal No. 1400, Edward Hald (incised).
€ 300 - 400

111
Vicke Lindstrand
Vase, c. 1952

H. 22.5 cm.
 Kosta Glasbruk.
 Colorless glass, engraved with fishing boats and nets.
 Marked: LINDSTRAND (acid stamp), LG 34 (diamond-cut).
€ 500 - 600

112
Sven Palmqvist
'Kraka' vase, 1968

H. 15.2 cm.
 Orrefors Glass, Orrefors.
 Cased glass, colorless, with blue mesh insets on an amber background.
 Marked: ORREFORS, Kraka No. 476, Sven Palmqvist (incised).
€ 300 - 400

113
Jörg Zimmermann
Unique honeycomb object, c. 1985

H. 21 cm.
 Colorless glass, gradient violet inclusions, honeycomb-like, fine-bubbled indentations and melted-on areas with a blown-through wire mesh.
 Marked: Jörg Zimmermann 1526 (engraved).
€ 300 - 400

114
Massimo Iosa Ghini
Two vases, 1990s

H. 39.5 - 41.3 cm, Ø 12 cm.
 Ritzenhoff, Marsberg.
 Colorless glass, red and blue.
 Marked: Manufacturer and designer's information (sandblasted), artist's signature (incised).
€ 360 - 400



112



113



114



115



116



117



118



119



120

115
Oiva Toikka
Fasan 'Pheasant', 1981

H. 17 x 26 x 13 cm.
Nuutajärvi, Notsjö for Iittala, Kalvola.
Cased glass, colorless, scarlet, blue, iridescent bands, combed, partially iridescent.
Marked: Manufacturer's label, engraved artist's signature.
Included: original box.
€ 250 - 300

116
Oiva Toikka
Red Robin 'Ruby Bird', 1992

H. 11.5 x 20 x 9.5 cm.
Nuutajärvi, Notsjö for Iittala, Kalvola. Cased glass, burgundy red, iridescent fusion.
Marked: Manufacturer's label, artist's signature (sandblasted).
Included: original box.
€ 200 - 250

117
Oiva Toikka
Water lily 'Kiisla', 1994

H. 17.5 x 34 x 13.5 cm.
Nuutajärvi, Notsjö for Iittala, Kalvola.
Cased glass, colorless, opaque white, lemon yellow and light green powder fusion, partially frosted.
Marked: Manufacturer's label, engraved artist's signature.
Included: original box.
€ 250 - 300

118
Oiva Toikka
Eurasian Curlew 'Kuovi', 1998

H. 14 x 22.5 x 9.5 cm.
Nuutajärvi, Notsjö for Iittala, Kalvola.
Cased glass, colorless, dark violet fused glass, opaque white fused glass, combed, partially frosted.
Marked: Manufacturer's label, artist's signature (sandblasted).
€ 250 - 300

119
Oiva Toikka
Two special birds 'Talitinitti', 2001/2003

H. 18-10.4 x 13-14.5 x 7.3-7.5 cm.
Nuutajärvi, Notsjö for Iittala, Kalvola.
Glass, colorless, lemon yellow, gray-black, white, and black fused glass, partially frosted.
Marked: manufacturer's label, artist's signature, stora enst (unique piece) (engraved).
€ 350 - 400

120
Oiva Toikka
Karelian whooper swan 'Karjalan Laulujoutsenet', 2004 (design)

H. 19 x 32 x 12 cm.
Nuutajärvi, Notsjö for Iittala, Kalvola, 2007.
Cased glass, colorless, opaque white, green, iridescent.
Marked: Manufacturer's label, artist's signature, dated (2007) and numbered (1733).
€ 250 - 300

121
Gabriella Crespi
Jar, 1970s

H. 3.4 cm, Ø 14.2 cm.
Crespi dlq, Buscate.
Nickel-plated brass sheet.
Marked: artist's signature, embossed artist's signet.
€ 500 - 600

122
Gabriella Crespi
Jar, 1970s

H. 4 cm, Ø 17.5 cm.
Crespi dlq, Buscate (attributed).
Sheet brass, partially nickel-plated.
Marked: artist's signature, BREV. (stamped).
€ 600 - 700



121



122



123
Ivar Alenius Björk
Two 'Lily' candlesticks, 1930s

H. 12.5 cm.
 Ystad-Metall, Ystad.
 Silver-plated alpacca.
 Marked: IAB YMA PR NS MADE IN SWEDEN.
€ 400 - 500

124
Ivar Alenius Björk
Three candlesticks 'Lily', 1930s

H. 12.5 cm.
 Ystad Metal, Ystad.
 Brass.
 Marked: IAB YMA PR NS MADE IN SWEDEN (embossed).
€ 500 - 600



125



126

125
Jens Harald Quistgaard
Four candlesticks, 1930s

H. 23.5 cm.
 Dansk Designs, Copenhagen.
 Brass.
 Marked: IHQ (stamped).
€ 400 - 500

126
Hagenauer, Vienna
Candlestick, 1938-45

H. 33 cm.
 Brass tube, brass sheet.
 Marked: wHw, MADE IN GERMANY (embossed).
€ 600 - 700



127



128



129

127
Ilse D. Ammonsens
Three kerosene candlesticks, c. 1950

H. 21.5 cm (with wick).
 Cast brass, sheet brass.
 Marked: © Ilse D. Ammonsens.
€ 300 - 400

128
Orrefors Glasbruk
Three candlesticks, 1960s

H. 21.5-33.6 cm.
 Brass, colorless glass.
€ 600 - 700

129
Ystad-Metall, Ystad
Three candlesticks, 1960s

H. 20,6-28 cm.
 Brass, sheet brass.
€ 500 - 600

130
Luigi Caccia Dominioni
Ashtray 'OG 7 Grand Marcel', 1970s

H. 3 cm, Ø 17 cm.
 Azucena, Milan.
 Chrome-plated metal.
€ 150 - 180



130



132

131
Lino Sabattini
Candlestick, c. 1980

H. 30 cm, Ø 6 cm.
 Sabattini, Bregnano, Como.
 Special alloy of chrome, nickel, and iron.
 Marked: Manufacturer's mark.
 Included: In original packaging with leaflet.
€ 250 - 300



131

132
Achille Castiglioni
Cutlery 'Dry', 1982 (design)

47 pieces. 10 dinner forks (L. 19 cm),
 10 dinner knives (L. 22.5 cm), 6 dinner
 spoons (L. 19 cm), 8 cake forks (L. 16.5 cm),
 8 teaspoons (L. 14.5 cm), 5 serving cutlery
 sets (L. 24-30 cm).
 Alessi, Crusinallo.
 Stainless steel.
 Marked: ALESSI AISI 420 (stamped).
€ 250 - 300



133

133
Milton Glaser; Andrea Branzi
Lot of kitchen utensils from the 'Twerghi' series, 1990s

Salt and pepper mill: H. 16.5 - 30.5 cm,
 Ø 5 - 5.5 cm, chopping boards: 43 x 18.8 cm
 and 52.5 x 22 cm.
 Alessi Twerghi, Crusinallo.
 Pearwood.
 Marked: Manufacturer's mark (1 board; 1 mill).
€ 300 - 320

134
Christian Liaigre (ATTR.)
Candlestick / lantern 'Lantern', 2000s

H. 37.6 cm, Ø 13 cm.
 France.
 Cast bronze, colorless glass.
€ 400 - 500



134

135

G. Mileva
Tapestry, 1920s

87 x 149,5 cm.
Polychrome wool, hand-knotted.
Marked: G. Mileva, MBA.
€ 900 - 1.200



135

136

Jean-Charles de Castelbajac
Artist carpet 'Comme Jean-Michel matta', 1980s

236 x 170 cm.
Wool, colored, tufted.
Marked: Jc de Castelbajac (woven).
€ 1.200 - 1.500



136

137

Ottavio Missoni; Rosita Missoni
Carpet, 1980s

250 x 161 cm.
T.&J. Vestor, Golasecca; Missoni, Milan, after 1983.
Pure New Wool, hand-knotted, polychrome.
Marked: Two manufacturer's labels with faint inscriptions.
€ 900 - 1.200



137

138

Ottavio Missoni; Rosita Missoni
Carpet from the 'Arazzi' series, 1990s

284 x 243 cm.
Saporiti, Milan.
Wool, woven, multicolored.
Marked: Manufacturer's and designer label, manufacturer's tag.
€ 1.000 - 2.000



138

139

Linde Burkhardt
Carpet 'La Rochefoucauld', 2000s

295 x 295 cm.
Driade Aleph, Corsico.
Wool, handwoven, polychrome on a red background.
Marked: Manufacturer's label.
€ 1.000 - 1.500

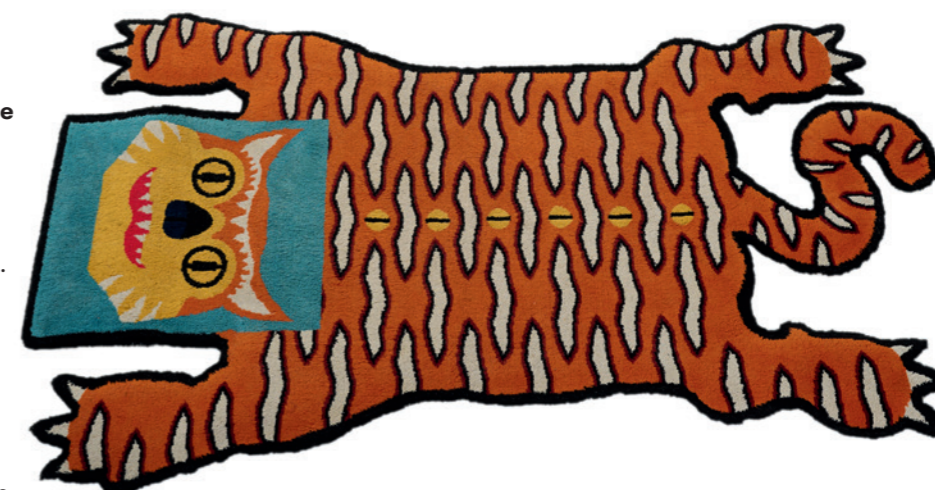


139

140

Walter van Beirendonck
Carpet 'Kwade Tijger' from the 'Glödande' collection, 2016

200 x 115 cm.
Ikea, Älmhult.
Polypropylene, polyester, burlap, red, orange, yellow, white, black, and blue.
Marked: Manufacturer's label.
€ 1.000 - 1.200



140



141

141
Renate Müller
Tortoise, 1971

H. 21 x 58 x 45 cm.
H. Josef Leven KG, Sonneberg.
Hessian, blue, red, and white leather.
€ 800 - 900



142

142
Renate Müller
Seal, 1971

H. 52 x 60 x 56 cm.
H. Josef Leven KG, Sonneberg.
Burlap, blue and red leather, black and white plastic eyes,
black nose.
€ 600 - 800

144
Ettore Sottsass
Umbrella stand, 1955

H. 48 cm, Ø 28.5 cm.
Rinnovel, Italy.
Brushed and polished aluminum.
Marked: Manufacturer's mark.
€ 1.200 - 1.500



144

143
Otl Aicher; Hermann Ay
Three Olympic mascots 'Waldi', c. 1971

H. 13.5-14.5 x 30-33 x 5-8 cm.
Anker Plüschspielwarenfabrik GmbH, Munich for Schuco, Fürth.
Colored cotton, blue felt.
€ 350 - 400



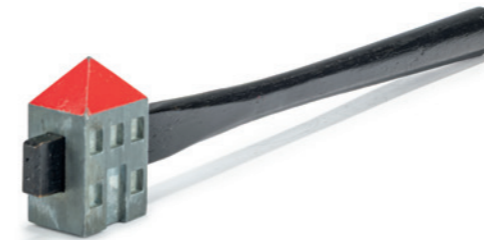
143

145
Shiro Kuramata
Hammer 'Hammer House', 1985

5.5 x 28 x 2.5 cm.
Time Studio, Japan.
Wood, lacquered black, steel, lacquered red.
Cat. Shiro Kuramata, Catalogue of works,
London 2013, p. 339.
€ 300 - 350

146
Angelo Mangiarotti
Table clock 'C1' - 'Secticon', 1956 (design)

H. 15 cm.
Portescap, Le Porte Echappement Universal
La Chaux De Fonds SA.
White plastic, black dial, white pointer.
Marked: secticon.
€ 800 - 900



145



148



146

147

147
Angelo Mangiarotti
Table clock 'T1' - 'Secticon', 1956 (design)

H. 24.5 cm.
Portescap, Le Porte Echappement Universal La Chaux De Fonds SA.
Black plastic, gold-plated dial, black pointer, brass sheet.
Marked: secticon.
€ 700 - 800

148
Andrea Branzi (attributed)
Basket, 2008

H. 44 cm, Ø 22.5 cm.
Italy.
PVC tubing, colorless, metal wire.
€ 400 - 500

149
Fernando Campana; Humberto Campana
Centerpiece 'Blow Up' from the series 'Bamboo', 2008 (design)

H. 15.5 cm, Ø 69 cm.
Alessi, Milan, 2010.
Bamboo.
Marked: Manufacturer and designer's information (embossed).
€ 700 - 800



149



150
Aldo Bakker
Carafe and mug 'Jug+cup', 2011
 H. 7.5-19 cm.
 Frans Ottink, Studio ZAND, Amersfoort.
 Porcelain, dyed black, unglazed.
€ 450 - 500

151
Garth Roberts
Vase 'Wrap', 2007
 H. 33 cm.
 Bitossi, Montelupo.
 Porcelain, white, glazed, turquoise overglaze.
 Marked: Manufacturer's information, artist's signature (gold, handwritten).
€ 500 - 600

152
Marc Newson
Three vases '9369' from the series 'Progetto Oggetti', 1993
 H. 39.5 x 17 cm.
 Cappellini, Milan.
 Ceramic, white, glazed.
 Marked: Manufacturer's sticker.
 Removable lid.
€ 700 - 800

153
Paloma Picasso
28-piece plate and platter set from the 'My Way' series, 1990s
 Two serving platters, 13 dinner plates, and 13 cake plates. 34.7 x 23.5 - 41.5 x 28.5 cm; Ø 22-27 cm.
 Villeroy & Boch, Mettlach.
 White porcelain, glazed, polychrome overglaze with gold.
 Marked: Manufacturer's mark (stamp).
€ 450 - 600



153

154
Zanollo & Sebellin, Nove/Vicenza
Nut and two chestnuts, 1980s
 H. 17-24 x 27-34 x 30-33 cm.
 Earthenware, glazed blue, white, and red.
 Marked: Manufacturer's label (2x), manufacturer's signature ZS Nove (1x).
€ 450 - 500

155
Zanollo & Sebellin, Nove/Vicenza
Four Pears, 1980s
 H. 33 - 50.5 cm.
 Earthenware, glazed red and blue.
 Marked: Manufacturer's label (3x), manufacturer's signature ZS 30/01 (1x).
 Stems of the red pears re-glued.
€ 600 - 800

156
Zanollo & Sebellin, Nove/Vicenza
Pigeon, 1980s
 H. 17 x 39 x 15 cm.
 Earthenware, turquoise-blue glaze.
 Marked: Manufacturer's information (sticker and handwritten).
 Image online.
€ 150 - 200

157
Dorothea Roth
Jug 'Banjo', c. 1970
 H. 23 cm.
 Roth Keramik, Ebernhahn.
 Majolica, fat lava glaze in wrinkled black and yellow.
 Possible signature obscured by floor protector.
€ 550 - 600



158
Oswaldo Cavandoli
Six Figures 'La Linea', 1968/69
 H. 19.5 - 21 cm.
 Massimo Lagostina, Omegna.
 White glazed porcelain.
 Marked: CAVA (debossed).
 Based on the cartoon characters, developed in 1968/69 for the program 'Carosello' on the Italian television channel RAI. The characters soon became advertising figures for the cookware manufacturer Massimo Lagostina, based in Omegna.
€ 750 - 800

159
Karl-Heinz Feisst
Large vase 'Telefunken', probably 1951-62
 H. 31 cm.
 Majolika Manufaktur Karlsruhe.
 Majolica, relief, polychrome glaze with gray craquelure.
 Marked: Manufacturer's mark (embossed).
€ 300 - 400



157



158



159



160



161

160
Hans Gugelot
Record player SK 61 'Snow White Coffin' and two loudspeakers 'L 11', 1962.

System: H. 24.5 x 58.5 x 29 cm, Speaker: H. 24 x 58.5 x 29 cm.
 Braun AG, Frankfurt am Main.
 Elm wood, sheet metal, painted white and gray, wood, painted white, plexiglas, white, gray, and colorless plastic.
 Marked: BRAUN SK 61, BRAUN L 11.
€ 600 - 700

161
Richard Sapper; Marco Zanuso
Two folding radios 'TS 502', 1964 (design)

H. 13 x 26.5 x 11.5 cm (unfolded).
 Brionvega, Milan.
 Black and yellow plastic, metal frame.
 Retractable antenna and carrying handle.
 Marked: Brionvega ts 502, MADE IN ITALY.
€ 600 - 700



162

162
Marco Zanuso; Roberto Lucci & Paolo Orlandini
Record player 'Fonoamplificatore Concetto 101', 1974 (design)

H. 19.5 x 45 x 34 cm.
 Brionvega, Milan.
 Black lacquered plastic, red enameled sheet metal.
 Marked: Brionvega.
€ 700 - 800

163
Alessandra Angelini; Giulio Candusso
Hi-Fi Sculpture 'Saturno', 2004

System: H. 126.5 x 73 x 30 cm; two loudspeaker cabinets: H. 106 x 32 x 25 cm.
 Wood, applied branches, gold foil, tempera predominantly in light gray, blue, and orange-red; black square metal.
 Marked: Audio-Art PR. 6.
€ 1.000 - 1.500



163



164

164
Philippe Starck
Armchair 'Series Lang - J', 1984 (design)

H. 83 x 60 x 67 cm.
Driade Aleph, Corsico.
Tubular steel, aluminum, black leather.
Marked: ALEPH BY STARCK (embossed).
€ 700 - 900

165
Philippe Starck
Cabinet 'Theatre du Monde', 1984 (design)

H. 115 x 39 x 41 cm.
XO, Brie-Comte-Robert.
Black lacquered sheet metal, casters.
€ 600 - 800



165

166
Philippe Starck
Chair / side table 'Mickville', 1985

H. 81 x 38 x 40.5 cm.
Driade Aleph, Milan.
Tubular metal, sheet metal, painted black.
€ 900 - 1.500

167
Philippe Starck
'Titos Apostos' table, 1985

H. 72 cm, Ø 85 cm.
Driade, Milan.
Aluminum tube, aluminum sheet, silver lacquer.
€ 900 - 1.200



166



167



168

168
Philippe Starck
'Wendy Wright' chair, 1986

H. 75 x 48 x 46 cm.
Disform, Barcelona.
Tubular metal, sheet metal, painted black.
€ 900 - 1.000



170

169
Philippe Starck
Armchair 'Pat Conley II', 1986 (design)

H. 75 x 54 x 76 cm.
XO, Paris.
Tubular metal, sheet metal painted dark gray.
Marked: Manufacturer's mark (raised).
Philippi (ed.), STARCK, Cologne 2000, p. 218.
€ 1.200 - 1.500

170
Philippe Starck
'Lola Mundo' folding chair / stool, 1988

H. 49 x 34 x 46 cm. Unfolded: H. 85.5 cm.
Driade, Caorso.
Ebony ash wood, cast aluminum, rubber nails.
Philippi, STARCK, Cologne 2000, p. 174 f.
€ 1.200 - 1.800



171

171
Philippe Starck
Two chairs 'Lila Hunter', 1988

H. 74.5 x 51.5 x 55.5 cm.
XO, Paris.
Gray anodized metal tube, mint green fiberglass-reinforced plastic, mint green nylon strap.
€ 1.000 - 1.500



172

172
Philippe Starck
Two table lights 'Ara', 1988
(design)

H. 50 - 57 cm.
 Flos, Brescia.
 Chrome-plated metal.
 Marked: Manufacturer's sticker
 and embossed logo.
 Adjustable lampshades.
€ 600 - 800



173

173
Philippe Starck
Table mirror 'Miss Donna', 1987
(design)

H. 41 x 24 x 24 cm.
 OWO, Montfort-l'Amaury.
 Polished aluminum, clear glass.
 Marked: Manufacturer's mark with facsimile
 signature.
 In original packaging.
 Philippi (ed.), STARCK, Cologne 2000, p. 333.
€ 1.200 - 1.500



174

175
Philippe Starck
Table 'Top Top', 2005

H. 73 x 190 x 90 cm.
 Kartell, Noviglio.
 Acrylic (PMMA), mahogany laminate.
 Marked: manufacturer's mark with object
 and designer information.
€ 800 - 1.200



175



176



177

176
Bořek Šípek
Large wall lamp, 1980s/90s

H. 210 cm.
 Alterego, Amsterdam (attributed).
 Black lacquered wood, chrome- and nickel-plated
 sheet metal, white and clear glass.
€ 900 - 1.200

177
Bořek Šípek
Chair 'Or So', 1987

H. 82.5 x 53.5 x 47.4 cm.
 Triade Aleph, Milan.
 Sheet metal, turquoise lacquer, copper and brass,
 wooden handle.
 Marked: Manufacturer's label.
€ 400 - 500



179



178

178
Bořek Šípek
Two chairs 'Dora', 1991 (design)

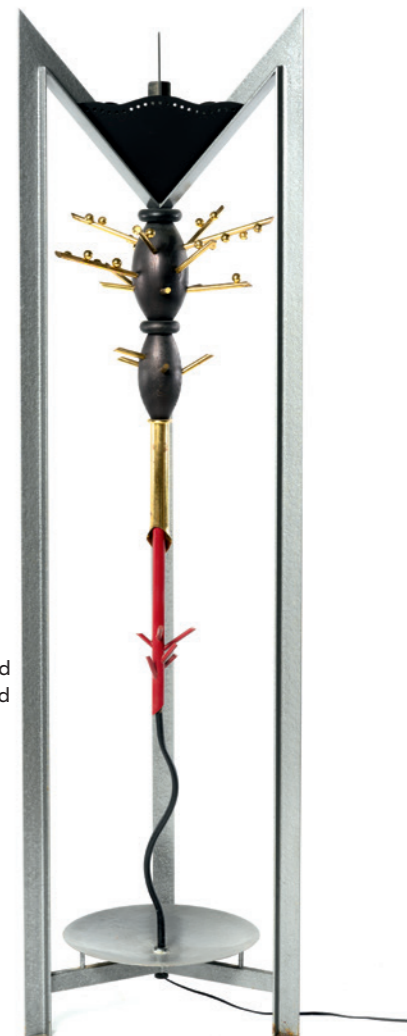
H. 81 x 44 x 49 cm.
 Triade Aleph, Corsico.
 Cherry wood, black leather cover.
 Marked: Manufacturer's sticker.
€ 500 - 600

179
Bořek Šípek
Chair 'Sedlak', 1992

H. 89 x 43 x 53.5 cm.
 Vitra, Birsfelden.
 Cast aluminum, cherry wood, rubber.
 Marked: Manufacturer's mark.
€ 700 - 800

180
Bořek Šípek
'Tree' hall stand / floor lamp, 1988

H. 209 x 56.5 x 54 cm.
 Vitra, Birsfelden.
 Sectional metal and sheet metal, painted silver and
 black, metal and brass, painted red, wood, painted
 black.
€ 900 - 1.200



180

181
Bořek Šípek
Wastepaper basket, c. 1989

H. 52 x 37.5 x 37.5 cm.
 Vitra, Birsfelden.
 Nickel-plated metal.
 Marked: Manufacturer's sticker.
 Image online.
 € 250 - 300



184

182
Bořek Šípek
Eight pieces from the 'Alix' cutlery set, c. 1989

L. 15,5 - 24.5 cm.
 Driade, Corsico.
 Stainless steel, partially silver-plated.
 Marked: manufacturer's stamp.
 Image online.
 € 200 - 250

184
Bořek Šípek
Six pieces 'Albertine' tableware from the 'Follies' series, 1989

Two coffee cups: H. 10 cm, three dessert plates: H. 3 cm, one breakfast plate: H. 2 cm, Ø 22 cm.
 Porcelayne Fles, Delft for Driade, Corsico.
 Porcelain, white, glazed, blue underglaze.
 Marked: Maker's mark (blue, underglaze).
 € 300 - 350

183
Bořek Šípek
Candlestick 'Simon', 1988 (design)

H. 46 cm, Ø 39.5 cm.
 Driade, Corsico.
 Silver-plated metal.
 Marked: Manufacturer's mark.
 € 700 - 900

185
Bořek Šípek
Champagne glass 'III', 1990

H. 42 cm.
 Alterego, Amsterdam.
 Glass, colorless and burgundy.
 € 120 - 150

186
Bořek Šípek
Bowl from the 'Urushi-Arai' series, 1990

H. 153 cm.
 Alterego, Amsterdam.
 Welded and twisted square steel, patinated brass tubing; natural wood, lacquered black and red, with gold print decoration.
 € 800 - 1.200

187
Bořek Šípek
Bowl 'Urushi-Arai 1', 1990

H. 36.5 cm, Ø approx. 44 cm.
 Alterego, Amsterdam.
 Cherrywood, lacquered black and red, with gold print decoration.
 € 600 - 700

188
Bořek Šípek
Bowl 'Urushi-Arai 9', 1990

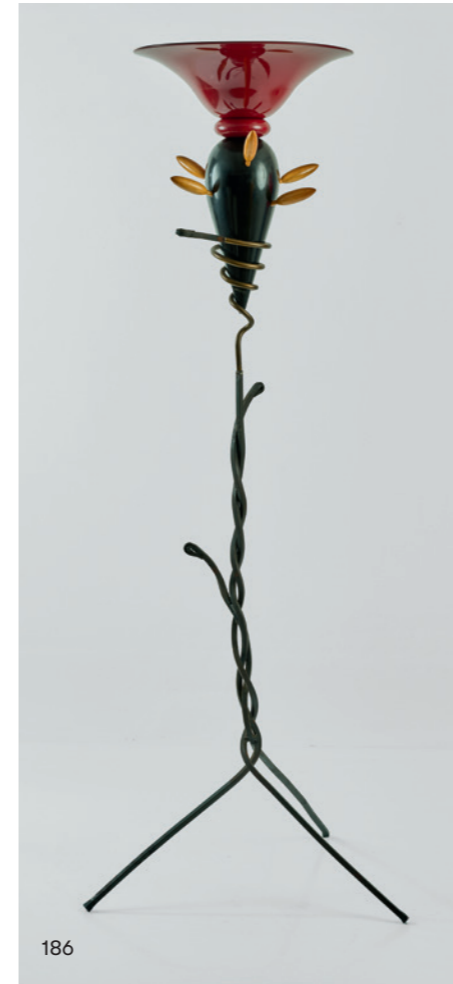
H. 24.5 cm, Ø 39 cm.
 Alterego, Amsterdam.
 Wood, lacquered red and black.
 € 600 - 700

189
Bořek Šípek
Bowl 'Urushi-Arai 8', 1990

H. 19 cm, Ø 39 cm.
 Alterego, Amsterdam.
 Wood, lacquered black, brown, and red, painted gold.
 € 600 - 700

190
Bořek Šípek
Table/wall light, 1990s

34 x 28 x 18 cm.
 Alterego, Amsterdam (attributed).
 Sheet metal, nickel-plated metal tube, blue glass.
 € 500 - 600



186



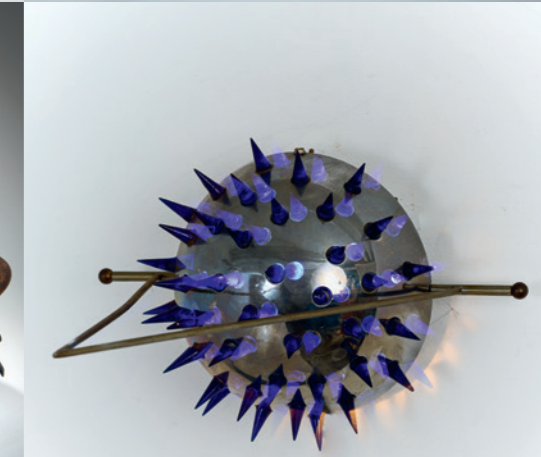
187



188



189



190

191
Bořek Šípek
Centerpiece 'Tristano', 1991

H. 32.5 cm, Ø 25 cm.
 Driade, Corsico.
 Glass, colorless and green.
 € 600 - 700

192
David Palterer
Vase, 1992

H. 42 cm.
 Alterego, Amsterdam.
 Glass, blue, amber.
 Marked: "DP '92 No. 23" (incised).
 Number 23 from an unknown edition.
 € 600 - 700



191



192



183

185

193

**Charles Eames; Ray Eames
Lounge Chair '670' with Ottoman '671' - 'Anniversary Edition',
1956 (design)**

Armchair: H. 82 x 83 x 85 cm; Ottoman: H. 44.5 x 64.5 x 56 cm.

Vitra, Birsfelden, 2006.

Plywood with walnut veneer, dark gray leather, sheet aluminum, and cast aluminum, partially painted black.

Marked: Manufacturer's plaque.

Number 81 from an edition of 999. Includes a folder with a care glove and certificate.

Fiell, Modern Chairs, Cologne 1993, p. 80.

€ 7.000 - 8.000



194

**Ray Eames; Charles Eames
Three Plastic Side Chairs on H-Base, 1950-53 (design)**

H. 79 x 47 x 56 cm.

Herman Miller, Zeeland; Vitra, Birsfelden.

Glass-fiber reinforced plastic, red-orange, cobalt blue, and black, chrome-plated tubular metal.

Marked: Herman Miller manufacturer's mark (1x), manufacturer's sticker (1x).

Cf. Neuhart/Eames, Eames Design, New York 1994, p. 143.

€ 1.200 - 1.500



194



195

195

**Ray Eames; Charles Eames
Rocking chair 'RAR', 1950-53 (design)**

H. 70 x 64 x 65.5 cm.

Herman Miller, Zeeland; Vitra, Birsfelden.

Glass-fiber reinforced plastic, dark ochre, chrome-plated metal rods, birch wood.

Marked: Manufacturer's sticker and embossing.

€ 900 - 1.200

196

**Ray Eames; Charles Eames
Four Plastic Side Chairs, 1950-53 (design)**

H. 72 x 65 x 62 cm.

Vitra, Birsfelden.

Chrome-plated metal tube, fiberglass-reinforced plastic, beige, brown synthetic leather, beige plastic, brown textile cover.

Marked: Manufacturer's sticker.

€ 1.500 - 1.800



196



197

197

**Ray Eames; Charles Eames
Shell chair 'PAC', 1950-53 (design)**

H. 80.5 x 64 x 59 cm.

Herman Miller, Zeeland.

Seal brown, fiberglass-reinforced plastic, dark violet leatherette, tubular metal, cast aluminum, casters.

Marked: Manufacturer's sticker.

€ 900 - 1.200

198

**Ray Eames; Charles Eames
Armchair 'DAR', 1950-53 (design)**

H. 78.5 x 62 x 60 cm.

Zenith Plastics Co., Gardena; Herman Miller, Zeeland.

Glass-fiber reinforced plastic, lemon yellow, chrome-plated metal tube.

€ 1.000 - 1.500



198

199

Eero Saarinen
Six 'Tulip' chairs, stool and table, 1956 (design)

Table: H. 74 cm, Ø 138 cm; Chairs: H. 82 x 48.5 x 57.5 cm; Stool: H. 46 cm, Ø 39 cm. Knoll International, New York, probably 1980s/90s.

Die-cast aluminum, fiberglass-reinforced plastic, white, black leather, black stone top, polished.

Marked: Manufacturer's logo.

Rouland, Knoll Furniture, Atglen 1999, p. 63, p. 120 ff.

€ 4.000 - 6.000



200

200

Vilhelm Wohlert; Jørgen Bo
Ceiling light 'California', 1967 (design)

H. 14 cm, Ø 56.5 cm.

Louis Poulsen, Copenhagen.

Aluminum sheet, aluminum slats, painted gray and white.

€ 700 - 800



201

201

Nanna Ditzel; Jørgen Ditzel
Desk, 1952 (design)

H. 71.5 x 75 x 75 cm.

Søren Willadsen Furniture, Vejen, Denmark.

Wooden box construction, teak, teak veneer, dark stained to mahogany.

Marked: Manufacturer's plaque.

Hansen / Petersen, Den Store Danske Møbelguide, 2005, p. 75.

€ 3.500 - 4.500

202

Arne Jacobsen
'3117' desk chair, 1955

H. 88.5-93 x 45.5 x 49.5 cm.

Fritz Hansen, Allerød.

Nickel-plated tubular metal, black lacquered plywood.

Marked: FH DANMARK (embossed).

€ 600 - 700



202

203

Isamu Noguchi
Table lamp base 'BB 2', 1950s

H. 63 cm.

Ozeki, Gifu, Japan for Wohnbedarf, Zurich.

Cast metal, blackened, bamboo cane.

Cat. Ozeki, Licht (明かり), n.p. n.d., n.p.

€ 900 - 1.000

204

Isamu Noguchi
Floor lamp 'Akari 27 N', 1950s

H. 122 cm.

Ozeki, Gifu, Japan.

Metal wire, black lacquer, rice paper.

Marked: Sun/Moon stamp.

From the Otto Bantele Collection.

Cat. Ozeki, Licht (明かり), n.p. n.d., n.p.

€ 1.500 - 2.000



204

203



199



205

205
Hans Brockhage
Rocking chair/car, 1950

H. 40 x 98.5 x 37.5 cm.
 Siegfried Lenz, Berggiesshübel/Pirna.
 Beechwood, brown glazed, plywood, lacquered yellow, wheels, lacquered red, chrome-plated metal rods, rubber.
€ 500 - 700

206
Egon Eiermann
Two chairs 'SE 119', 1952/53

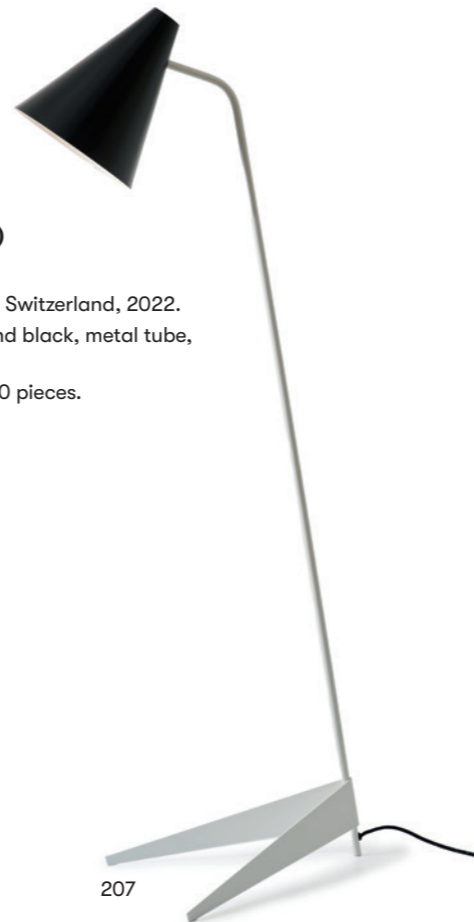
H. 79 x 43 x 46.5 cm.
 Wilde & Spieth, Esslingen.
 Beechwood, plywood with teak veneer, rattan weave.
€ 500 - 600



206

207
Alfred Altherr
Floor lamp, 1953 (design)

H. 150-162 cm, Ø 23 cm.
 Stahl- & Traumfabrik, Schlieren, Switzerland, 2022.
 Sheet metal, varnished white and black, metal tube, painted white.
 From a limited re-edition of c. 50 pieces.
€ 1.200 - 1.800



207

208
Max Bill; Hans Gugelot; Paul Hildinger
Two 'Ulm stools', 1953

H. 46 x 40 x 30 cm.
 HfG, Ulm.
 Spruce wood, inserted and glued; beech wood handle.
 The consignor acquired the stools directly from the HfG Ulm.
 Rüegg (ed.), Schweizer Möbel und Interieurs, Basel 2002, p. 367.
€ 1.800 - 2.500



208

209
Egon Eiermann
Eight 'SE 18' folding chairs, 1953 (design)

H. 76 x 52.5 x 50.5 cm.
 Wilde & Spieth, Esslingen.
 Beechwood, beech plywood.
 Marked: Manufacturer's stamp.
€ 1.000 - 1.200



210
Hans Gugelot; Max Bill; Otl Aicher
Two floor lamps from the HfG Ulm, around 1955 (design)

H. 196 cm.
 Ulm School of Design (HfG).
 Tubular metal, sheet metal, matte chrome-plated.
€ 1.500 - 2.000



210

211
Herbert Hirche
Serving cart, 1956

H. 51 x 70 x 46.5 cm.
 Christian Holzapfel KG, Ebhausen.
 Metal, painted black, corrugated, matted glass.
€ 500 - 600



211

212

**Poul Kjaerholm
Armchair 'PKO A', 1952 (design)**

H. 65 x 66 x 62.5 cm.
Fritz Hansen, Vässingerød, 2022.
Bent plywood, ash veneer, black lacquered, red rubber.
Marked: Manufacturer's plaque and sticker.
Harlang/Helmer-Petersen/Kjaerholm, Poul Kjaerholm, Copenhagen 1999,
p. 173; Fiell, 1000 Chairs, Cologne 1997, p. 299.
€ 1.500 - 2.000



212

213

**Arne Jacobsen
'Swan Chair' - '60th Anniversary Edition', 1958 (design)**

H. 79.5 x 73 x 64.5 cm.
Fritz Hansen, Vässingerød, 2018.
Cast aluminum, gold-plated, light brown leather.
Marked: manufacturer's sticker, manufacturer's embossing; numbering
0327/1958.
Number 0327 from the jubilee edition limited to 1,958 pieces, 2018.
€ 2.800 - 3.200



213



214

**Finn Juhl
Two armchairs 'FD 136', 1956 (design)**

H. 79 x 82 x 67 cm.
France & Daverkosen, Copenhagen.
Teak, white textile cover.
Marked: Manufacturer's mark.
Newly upholstered and new fabric.
France, France & Son, British pioneer of Danish furniture, 2015, p. 125.
€ 3.000 - 5.000



215

215
Finn Juhl
Two 'Spade' Chairs - 133', 1953 (design)

H. 78 x 74 x 76 cm.
 France & Søn, Copenhagen.
 Teak, brown textile cover.
 Marked: Manufacturer's plaque (2x).
 One armchair with visible traces of a previous restoration.
 Hiort, Arkitekten Finn Juhl, Copenhagen 1990, p. 61; Oda, Danish Chairs, San Francisco 1999, p. 101; Hansen/Petersen, Den Store Danske Møbelguide, np. 2005, p. 173.

€ 1.800 - 2.500

216
Ib Fabiansen
Floor lamp, 1950s

H. 77 cm, Ø 29 cm.
 Fog & Mørup, Copenhagen.
 Teak, textile cord, reinforced paper.
 The frame has been professionally restored.

€ 1.500 - 2.000



216



217

217
Arne Jacobsen
Side table '3512/3513', c. 1958

H. 52 cm, Ø 90 cm.
 Fritz Hansen, Allerød.
 Blockboard with teak veneer, cast aluminum.
 Marked: Danish Furniture Maker's Control Label.

€ 800 - 1.200

218
Arne Jacobsen
Four 'Pot chairs - 3318', 1959

H. 71 x 72 x 58 cm.
 Fritz Hansen, Allerød.
 Chrome-plated tubular metal, textile cover, blue with green.

Arne Jacobsen, Danish Furniture Art, Copenhagen, 2002, p. 69.
 € 3.000 - 3.500



218



219

219
Willy van der Meeren
Two bar stools, 1953

H. 86 x 38 x 43.5 cm.
 Tubax, Belgium.
 Metal tube and sheet metal, painted black, green and gray vinyl, black plastic.

€ 1.500 - 1.800



220



222

220
Arnold Poell
Table light, c. 1950

H. 43.5-53 cm.
J. T. Kalmar, Vienna.
Brass, brass sheet, partially nickel-plated, brown leather, reinforced Japanese paper, textile ribbon.
Adjustable lampshade
€ 800 - 900

222
Mathieu Matégot
Table light, 1950s

H. 20.3 cm, Ø 8.5 - 12 cm.
Atelier Matégot, Paris.
Brass tube, brass sheet, metal sheet, painted white and black.
€ 900 - 1.200

221
Carlo De Carli
Side table, c. 1950

H. 42.5 x 97 x 45 cm.
Cantu, Italy.
Yellow marble with gray veins, brass tubing, brass, metal frame, lacquered black.
€ 1.500 - 1.800



221



223



224

223
Gino Sarfatti
Table light '566', 1956

H. 50.5 x 14 x 22 cm.
Arteluce, Milan.
Chrome-plated metal tube, black painted sheet metal, cast metal, black shrink varnish. Marked: Manufacturer's sticker.
With light bulb.
Romanelli/Severi, Gino Sarfatti, Milan 2012, p. 278.
€ 1.000 - 1.500

224
Gino Sarfatti
Table light '584/G', 1957

H. 56 cm.
Arteluce, Milan.
Metal, varnished black, brass tube, purple acrylglas shade.
Exh. cat. Gino Sarfatti, Galerie Christine Diegoni, Paris 2008, p. 67.
€ 1.500 - 2.000

225
France (attributed)
Coffee table, c. 1958

H. 40.5 x 142 x 50 cm.
Metal tube, sheet metal, metal rods, painted black, glass, black.
From the Otto Bantele Collection.
€ 800 - 1.200



225

226

Charles Eames; Ray Eames
Lounge Chair '670' with Ottoman '671' -
'new Dimensions', 1956 (design)

Armchair: H. 90 x 84 x 86 cm; Ottoman: H. 44.5 x 64.5 x 56 cm.
Vitra, Birsfelden, after 2008.

Plywood, veneer and black lacquer, textile fabric (wool; Kvadrat Maham Ottoman Stripe fabric by Paul Smith 466142-001 brass), sheet aluminum, and cast aluminum, black lacquer.

Marked: Manufacturer's plaque New Dimensions.

Upholstery made to order by the consignor.

€ 5.500 - 6.500



227

George Nelson
'DAF Swagged-Leg' armchair, 1954

H. 75.5 x 72.5 x 57 cm.

Herman Miller, Zeeland.

Cream-colored, fiberglass-reinforced polyester, chrome-plated metal tube, black rubber buffers, orange-red textile cover.

Marked: manufacturer's embossing.

Vege sack (Ed.), George Nelson, Weil/Rhine 2008, p. 249.

From the Otto Bantele Collection.

€ 1.000 - 1.200



227



228

228

Hala, Netherlands (attributed)
Table / wall light, c. 1955

H. 66 x 31 x 41 cm.

Metal tube, sheet metal, painted white and red, chrome-plated metal tube.

From the Otto Bantele collection.

€ 600 - 800

229

Eero Saarinen
Table 'Tulip' - '164M', 1956 (design)

H. 71 cm, Ø 137 cm.

Knoll International, New York.

White marble with gray veining, white lacquered die-cast aluminum, white lacquered wood.

Marked: Manufacturer's mark.

Rouland, Knoll Furniture, Atglen 1999, p. 63, p. 120 ff.

€ 2.500 - 3.500



229



230

230

Paul McCobb
Two chairs '7019', c. 1956

H. 91.5 x 46 x 58.5 cm.

Directional Designs, New York.

Walnut, dark varnished, green textile cover.

€ 800 - 900



231

231

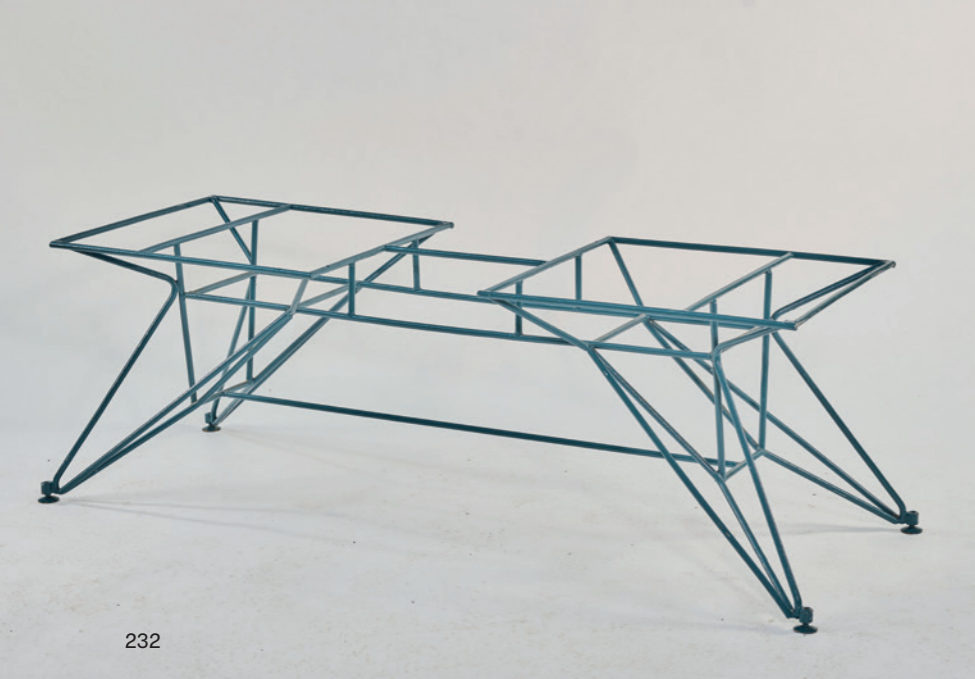
Paul McCobb
Two armchairs '7009', c. 1956

H. 91 x 58 x 60.5 cm.

Directional Designs, New York.

Walnut, dark varnished, green textile cover.

€ 1.200 - 1.500



232

232
Italy
Table frame, c. 1958

H. 60 x 175 x 62 cm.
 Metal rod construction, painted blue-gray.
 Exh. cat. Die Fünfziger Stilkonturen eines
 Jahrzehnts, Museum Villa Stuck, Munich
 1984, p. 104, no. 175 (Text).
 From the Otto Bantele Collection.
€ 1.000 - 1.800



233

233
Alvar Aalto
Three stools 'X-Leg' - 'X 601', 1954
(design)

H. 45 x 45 x 45 cm.
 Artek, Helsinki.
 Birch plywood, elm veneer.
 Marked: Manufacturer's stamp.
 Ex. cat. Alvar & Aino Aalto, Design, Kunsthal-
 le Bielefeld, November 28, 2004 to February
 27, 2005, ed. Thomas Kellein, p. 150.
€ 1.900 - 2.500

234
Friso Kramer
Eight chairs 'Result', 1958 (design)

H. 80.7 x 45 x 44 cm.
 Ahrend Cirkel, The Hague, 1963-1965.
 Sectional metal, painted gray, plywood with
 beech veneer, stained dark.
 Marked: Manufacturer's mark, date stamp.
 Vöge/Westerveld, Stoelen, Nederlandse Ont-
 werpen 1945-1985, Amsterdam 1986, p. 104.
€ 1.500 - 2.000



234



235



236

235
Italy
Two shelves, c. 1958

Total height: 295 x 85.5 x 45 cm. Shelves: 1 x 78.5 x 42.5 cm, 8 x
 78.5 x 32 cm.
 Square metal tube, painted black, sheet metal, brass tube, block-
 board with teak veneer and black laminate.
€ 1.000 - 1.500

236
Ruprecht Skrip
Counterweight double arm wall lamp, c. 1958

H. 55 cm, L. 130-175 cm, Ø 16 cm.
 Skrip Leuchten, Germany.
 Teak, parchment paper, coconuts, metal wire, painted white,
 plastic cords.
€ 1.000 - 1.500



237

237
Italy
Three wall lights, c. 1950

H. 19 x 13 x 20 cm.
Cast glass, colorless, frosted, metal tube, nickel-plated sheet metal.
€ 400 - 500

238
Achille Castiglioni
Stool 'Mezzadro', 1957 (design)

H. 54 x 44 x 51 cm.
Zanotta, Nova Milanese.
Chrome-plated metal strip, red lacquered sheet steel, beechwood.
Marked: Manufacturer's plaque.
€ 450 - 500

239
Italy
Magazine rack on casters, 1960s

H. 59,5 x 53 x 42,5 cm.
Walnut, glass, brass, rubber.
Glass plates with chips.
From the Otto Bantele Collection.
€ 600 - 700

240
Germany
Ceiling light, 1950s

H. 96.5 cm, Ø 27 cm.
Brass tube, brass sheet, cased glass, colorless and white.
€ 500 - 600



240

241
Tito Agnoli
'255' clamp light, 1954

H. 67 cm.
Oluce, Milan.
Tubular metal sheet metal, nickel-plated, black plastic, rubber.
€ 500 - 600

242
Italy
Table light, 1950s

H. 43.5 cm, Ø 30 cm.
Sheet metal, painted white and red, strip metal, black, brass.
€ 300 - 400

243
Paolo Venini
Wall applique 'Zanfirico', 1955 (design)

30 x 37 x 26.5 cm.
Venini, Murano, 1983.
Colorless glass, applied bands of fine white 'Zanfirico' thread mesh, brass mount.
Marked: Venini Italia 83 (diamond-engraved).
€ 500 - 600

244
Børge Mogensen
Sofa table '264', 1956

H. 46 x 58 x 181 cm.
Fredericia Møbelfabrik, Fredericia.
Teakwood and teak veneer.
Marked: Manufacturer's mark (stamped).
€ 600 - 800

245
Stilnovo, Milan
Table light, c. 1956

H. 43 cm.
Aluminum sheet, painted black, white acrylic glass, brass wire and sheet.
€ 600 - 700

246
Stilnovo, Milan
Table light, c. 1956

H. 43 cm.
White aluminum sheet, white acrylic glass, brass wire and sheet.
€ 600 - 700



238



239



241



242



244



243



245



246



247

247
Isamu Noguchi
'70EN' ceiling light, 1951 (design)

H. 33 cm, Ø 70 cm.
Ozeki, Gifu, Japan.
Wire, mulberry paper.
Marked: artist's signet, sun moon (red stamp).
€ 400 - 600



249

248
Denmark
Stool, 1950s

H. 46 x 25 x 14 cm.
Teak.
Provenance: Estate of Franz and Irene Hart.
Image online.
€ 350 - 400

249
Vereinigte Werkstätten, Munich
Tree trunk table, c. 1957

H. 53.5 x 22.5 x 60 cm.
Oak trunk carving, wrought iron, dark patinated.
€ 700 - 800



250

250
Illum Wikkelsø
Coffee table, c. 1957

H. 141.5 cm, Ø 105 cm.
CF Christensen, Silkeborg.
Teak, clear glass.
€ 700 - 800

251
Gunnar Hasth
Two armchairs, coffee table '390', c. 1952

Armchair: H. 82.5 x 74 x 80 cm; Table: H. 58 cm, Ø 78 cm.
Brödarna Holm, Ransta (Sweden).
Bamboo cane, rattan weave, floral textile cover, clear glass.
Scandinavian Retro, No. 3, 2021, p. 20.
€ 600 - 800



251



252

252
Ray Eames; Charles Eames
Two armchairs 'EA 108 - Aluminum Group', 1958 (design)

H. 83 x 57 x 59 cm.
ICF Cadsana, Milan for Herman Miller, Zeeland.
Cast aluminum, matte chrome-plated aluminum tube, black tubular steel, black textile cover.
Marked: Manufacturer's sticker.
€ 700 - 900

253
Ray Eames; Charles Eames
Armchair 'Aluminum Group', 1958

H. 80 (medium height) x 56 x 60 cm.
ICF Cadsana, Milan.
Cast aluminum, metal tubing, black leather.
Adjustable.
€ 500 - 600

254
Fröseke, AB Nybrofabriken
Bedside table, c. 1958

H. 58 x 46 x 31.5 cm.
Wooden box construction, board, teak, teak veneer, brown leather.
Marked: Manufacturer's sticker.
Image online.
€ 400 - 450



253

255
Vereinigte Werkstätten, Munich
Floor lamp, c. 1958

H. 175.5 cm.
Metal tube, perforated sheet metal, painted light gray.
From the Otto Bantele Collection.
€ 600 - 700

256
Le Corbusier (AFTER)
Stool LC14 'House of Brazil', 1959 (Entwurf)

H. 49.5 x 37.5 x 22.5 cm.
France, probably 1960/70s.
Oakwood.
Numbered 22/168, stenciled letters AK, paint residue.
€ 900 - 1.200



255



256



257

257
Vetzeria Vistosi, Murano (attributed)
Ceiling light with two shades, 1960s

H. 22 cm, Ø 20 cm (per shade).
 Glass, red, yellow, opaque white, and purple, frosted.
 € 500 - 600

258
K. J. Pettersson & Söner, Sweden
'Palle' stool, c. 1969 (design)

H. 35.5 x 60 x 35 cm.
 Pinewood planks, solid, glued.
 € 2.500 - 3.000



258

261
Louis Vuitton, Asnières-sur-Seine
Suitcase, 1960s

Wooden body. Vinyl-impregnated cotton canvas with canvas monogram, leather handle, patented Tumbler lock (numbered: 119070), edge banding with vinyl manufacturer's initials, brass nails.
 Interior: lined with powder-colored vinyl-impregnated cotton canvas and cotton, removable intermediate shelf.
 H. 28.5 x 81 x 52.2 cm.
 Marked: LV or LOUIS VUITTON (on brass nails and lock); MADE IN FRANCE (on lock).
 Without a key.
 € 1.800 - 2.400



259

259
Società Compensati Curvati, Monza
Six chairs, c. 1959

H. 85 x 46 x 55 cm.
 Metal tube, lacquered black, plywood with walnut veneer, three-dimensionally formed.
 € 2.200 - 3.000

260
Louis Vuitton, Asnières-sur-Seine
Suitcase, 1920s

Wooden body. Vinyl-impregnated cotton canvas with canvas monogram, leather handle, patented Tumbler lock (numbered: 084394), edge banding with vinyl manufacturer's initials, brass nails.
 Interior: Lined with linen.
 H. 21 x 66 x 50 cm.
 Marked: LV or LOUIS VUITTON (on brass nails and lock); Bte.SGLG PATENT, MADE IN FRANCE, 149 NEW BOND STREET LONDON, 70 CHAMPS-ÉLYSÉES PARIS (on lock). LOUIS VUITTON, 819867 (manufacturer's label).
 Without a key.
 € 1.800 - 2.400

262
Louis Vuitton, Asnières-sur-Seine
Suitcase, 1960s

Wooden body. Vinyl-impregnated cotton canvas with canvas monogram, leather handle, patented Tumbler lock (numbered: 119070), edge banding with vinyl manufacturer's initials, brass nails. Interior: lined with powder-colored vinyl-impregnated cotton canvas and cotton, removable intermediate shelf.
 H. 26 x 80 x 52.2 cm.
 Marked: LV or LOUIS VUITTON (on brass nails and lock), MADE IN FRANCE (on lock).
 Without a key.
 € 1.800 - 2.400

263
Louis Vuitton, Asnières-sur-Seine
Suitcase, 1960s

Wooden body. Vinyl-impregnated cotton canvas with 'Canvas Monogram', leather handle, patented Tumbler lock (numbered: 119070), edge banding with vinyl manufacturer's initials, brass nails.
 Interior: lined with powder-colored, vinyl-impregnated cotton canvas and cotton, removable intermediate shelf.
 H. 28.5 x 81 x 52.2 cm.
 Marked: LV or LOUIS VUITTON (on brass nails and lock); MADE IN FRANCE (on lock); manufacturer's label with address information 'LOUIS VUITTON, AVE MARCEAU 78bis - PARIS, NICE - 2 AVE DE SUEDE with number LV 877664 LV' (inside).
 No key. Handle replaced by the manufacturer.
 € 1.800 - 2.400

264
Modern Creation Munich, Munich
Travel wardrobe, 1980s/90s

Wooden body covered in black nylon. Brass fittings, leather handles, black leather. Interior: orange cotton fabric.
 H. 95 x 34 x 62 cm.
 Marked: Manufacturer's label, ORIGINAL DESIGN MCM HANDMADE, DESIGN MICHAEL CROMER, MUNICH GERMANY, MADE IN GERMANY, MCM (stamped and woven), Numbered: C1437.
 € 3.000 - 5.000



260

261

262

263



264



265

265
Tito Agnoli
'P3 S' lounge chair, 1962

H. 65 x 160 x 62 cm.
 Vittorio Bonacina & C., Como.
 Metal rod, rattan weave.
 Cf. Gramigna, Repertorio 1950-1980, Milan
 2001, p. 94.
€ 1.500 - 1.800



266

266
Tito Agnoli
Floor lamp '3300', 1960

H. 154 cm, Ø 11 cm.
 O-Luce, Milan.
 Brass tube, partially painted black, cast
 metal, painted black, black plastic.
 Exh. cat. Giuseppe Ostuni O-Luce, Galerie
 Luminaire-Moderniste, Berlin 2015, pp. 128 f.
€ 1.200 - 1.800

267
Achille Castiglioni
Two 'Gatto' table lights, 1960

H. 30.5 cm.
 Flos, Brescia.
 Wire frame, white lacquered, Cocoon cover,
 wood.
€ 700 - 1.000



267



268

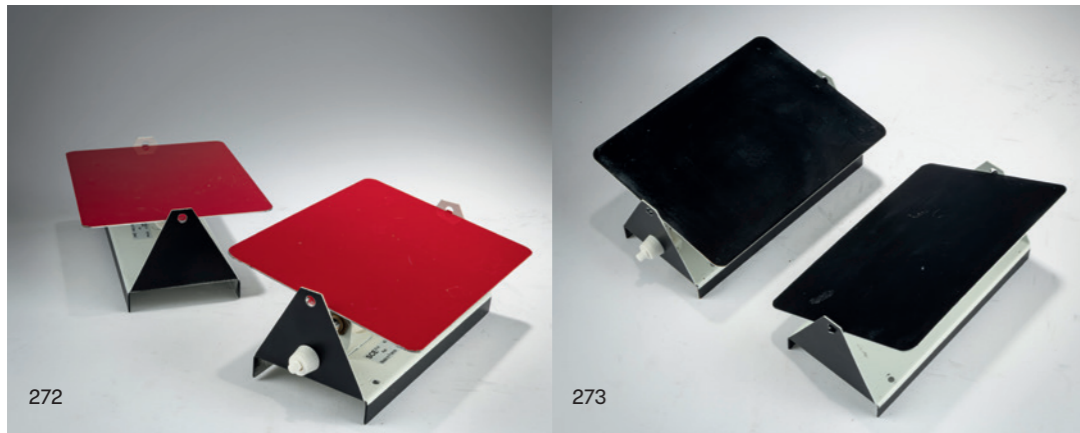
268
Walter Wirz
Serving trolley, 1960

H. 69 x 50 x 90 cm.
 Wilhelm Renz, Böblingen.
 Wood, lacquered white, nickel-plated metal tube.
 Marked: Manufacturer's sticker.
€ 900 - 1.200

269
Arrigo Finzi
Five-piece coffee and tea service, 1960s

Two pots, creamer, sugar bowl, and tray. H. 8-19.5 cm,
 60 x 35.5 cm.
 Arrigo Finzi & C., Milan.
 800 silver, chrysoprase, and agate.
 Marked: 800 Finzi, Milan hallmark.
 A total of 3981 grams of silver.
€ 4.500 - 5.500





270
Charles Eames; Ray Eames
Office chair 'Time-Life Desk Chair' - 'ES 104', 1960 (design)
 H. 90-100 x 68 x 70 cm.
 Vitra, Birsfelden.
 Chrome-plated cast aluminum, black leather.
 Marked: Manufacturer's sticker.
€ 800 - 1.000



270

271
Oscar Torlasco (attributed)
Floor lamp, c. 1960
 H. 160 cm, Ø 48 cm.
 Lumi, Rome (attributed).
 Metal tube, nickel-plated sheet metal, lacquered white, white marble with gray veins, gray-blue tinted acrylglass.
€ 1.800 - 2.200



271

272
Charlotte Perriand
Two wall appliques 'CP-1', 1963 (design)
 H. 17.5 x 12.5 x 7 cm.
 Steph Simon, Paris (originally); SCE, France.
 Sheet metal, painted red, black, and white.
 Marked: Manufacturer's sticker.
€ 900 - 1.200

273
Charlotte Perriand
Two wall appliques 'CP-1', 1963 (design)
 H. 17.5 x 12.5 x 7 cm.
 Steph Simon, Paris (originally); SCE, France.
 Sheet metal, painted black and white.
 Marked: Manufacturer's sticker.
€ 900 - 1.200

274
Fagerhults Ljusarmatur, Fagerhult Ceiling light, 1960s
 Ø 65 cm.
 Fagerhults Ljusarmatur, Fagerhult.
 Sheet metal, painted white, nylon cords.
 Marked: manufacturer's label.
€ 700 - 800

275
Andy Warhol
'210 Coca-Cola Bottles' Liquor Cabinet, 1962
 H. 184.5 x 90 x 55 cm.
 Art Design by hb Collection, 1980s/90s.
 Wood, polychrome lacquer and foils, mirror, lighting.
 Marked: Metal plaque Artdesign by hb Collection, motif 3: Andy Warhol, 210 Coca Cola Bottles - 1962, No. 348/500 Limited Edition Europe. In print: © 1997 The Andy Warhol Foundation, Licensed by MMI.
 Included: certificate of authenticity.
€ 2.000 - 3.000



274



275

276

Gae Aulenti
Four armchairs 'Locus Solus', 1964 (design)

H. 67 x 56 x 54,5 cm.
Poltronova, Pistoia.
Tubular metal, black lacquer, white plastic.
Marked: Remains of a manufacturer's mark.
Cf. Gramigna, Repertorio 1950 - 2000, vol. 1, Turin 2003, p. 108.
€ 2.000 - 2.500



278

277

Leonardo Ferrari; Franco Mazzucchelli Tartaglino
'Platea' table light, 1965

H. 38 cm, Ø 45 cm.
Artemide, Milan.
Sheet aluminum, painted blue and white, glass, clear and white.
€ 650 - 800



277

278

Ludovico Diaz de Santillana
Two hanging lights 'Tessuto', 1970s

H. 73 cm.
Venini, Murano.
Chrome-plated sheet metal, white lacquer, chrome-plated tubular metal, white and clear glass.
€ 750 - 800



276



280

281

279

Eugenio Gerli
Two armchairs 'PS-142', 1960s??

H. 65 x 70 x 60 cm.
Tecno, Milan.
Tubular metal frame, blue and green velvet upholstery, casters.
Gramigna, Repertorio 1950-2000, vol. 1, Turin 2003, p. 175.
€ 1.900 - 2.200

€ 1.900 - 2.200



279

280

Fontana Arte, Milan
Wall mirror, 1960s

Ø 70 cm.
Fontana Arte, Milan, 1966.
Smoke gray glass, mirror glass, brass sheet.
Marked: Manufacturer's sticker, date stamp.
€ 1.000 - 1.500

€ 1.000 - 1.500

281

Carlo Nason
Six wall lights, 1960s

H. 27,5 x 30 x 15,5 cm.
A.V. Mazzega, Murano.
Colorless glass with gray inclusions, chrome-plated sheet metal.
€ 1.200 - 2.000

€ 1.200 - 2.000



282

282
Marian Zawadski
Two table/floor lamps, 1965

H. 96-128 cm.
Tilgmans Keramik, Sweden.
Earthenware, incised, polychrome, glazed;
metal frame, raffia.
Marked: artist's signature and date (incised).
€ 900 - 1.200

283
Carl Fagerlund
Two wall lights, 1960s

H. 26 x 11 cm.
Orrefors Glasbruk, Orrefors.
Clear glass, sheet brass.
€ 700 - 800



283

284

284
Carl Fagerlund
Two wall lights, 1960s

H. 26 x 18 cm.
Orrefors Glasbruk, Orrefors.
Sheet brass, clear glass.
€ 800 - 900

285
Augusto Savini
Eight chairs, 1968 (design)

H. 82 x 46.5 x 52.5 cm.
Pozzi, Mariano Comense.
Ash wood, plywood with ash veneer, metal
clip.
Marked: manufacturer's label.
Domus 450, 1967, p. 31.
€ 1.800 - 2.200



286

286
Ercole Barovier
Table light 'Efeso', 1964 (design)

H. 41 cm.
Barovier & Toso, Murano.
Cased glass, colorless, with blue oxide and
bubble inclusions, brass mount.
Without lampshade.
€ 1.500 - 1.800

287
Jens Nielsen
Two 'Laminex' armchairs, 1966
(design)

H. 69-71 x 53.5 x 74 cm.
Westnøfa Furniture, Andalsnes, Norway.
Plywood with beech veneer.
€ 700 - 800



287



288

288
Gianfranco Frattini
Four Stacking Tables 'Marema', 1967

H. 22.5-37.5 cm, Ø 42 cm.
Cassina, Milan.
Cream white ABS plastic.
Marked: Manufacturer's mark.
€ 800 - 900



285



289



289
Eugenio Gerli
Liquor cabinet 'B 106', 1966

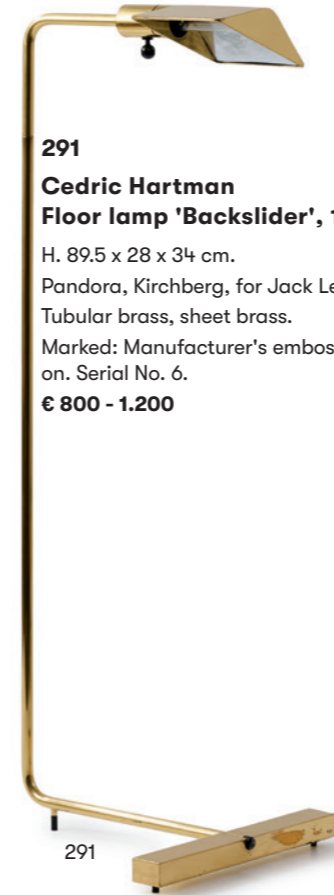
H. 72.5 x 88 -139 x 54 cm.
 Tecno, Milan.
 Sheet metal, nickel-plated metal wire, plywood with teak veneer, white resopal.
 Marked: Manufacturer's plaque.
 Gramigna, Repertorio 1950-1980, Mailand 2001, p. 128.
€ 1.800 - 2.200

290
Richard Schultz
Table from the 'Leisure Collection', 1966 (design)

H. 71.5 x 152 x 96 cm.
 Knoll International, New York.
 Cast aluminum, painted white, sheet metal, enameled white.
 Cf. Lutz, Knoll. A Modernist Universe, New York 2010, p. 164.
€ 1.200 - 1.800



290



291

291
Cedric Hartman
Floor lamp 'Backslider', 1966

H. 89.5 x 28 x 34 cm.
 Pandora, Kirchberg, for Jack Lenor Larsen Inc., Switzerland.
 Tubular brass, sheet brass.
 Marked: Manufacturer's embossing with designer information. Serial No. 6.
€ 800 - 1.200

292
Gio Ponti
Two floor lamps 'Pirellone', 1967 (design)

H. 184 x 40 x 26 cm.
 Fontana Arte, Milan, c.1993.
 Cast aluminum, glass, colorless and opal white, sheet metal, painted white.
 Cf. Licitra Ponti, Gio Ponti, Cambridge 1990, p. 235.
€ 1.200 - 1.800 (Regular taxation)

293
Vilhelm Wohlert; Jørgen Bo
Ceiling light 'California', 1967

H. 14 cm, Ø. 56.5 cm.
 Louis Poulsen, Copenhagen.
 Sheet aluminum, aluminum lamellae, painted gray and crème-white.
€ 700 - 800

294
Italy
Table light, 1960s

H. 36 cm, Ø 40 cm.
 Chrome-plated sheet metal, white and clear glass, white, gray marble base.
€ 500 - 600



293



292



295

295
Gio Ponti
Two table lights 'Polsino', 1968

H. 39 x 22 x 15.5 cm.
 Design House, Milan.
 Chrome-plated metal, white and black Plexiglas.
 Marked: Manufacturer's sticker.
 Cf. Krzentowski (Ed.), The complete designers' lights, Zurich 2011, p. 238; cf. La Pietra, Gio Ponti, Milan 1988, p. 346.
€ 1.800 - 2.200



296

296
Gino Sarfatti
Two wall / ceiling lights '50', 1968

H. 65 x 7 x 4.5 cm.
 Arteluce, Milan.
 Sheet metal, varnished brown and gray, respectively, plastic.
€ 850 - 900



297

297
Tobia Scarpa; Afra Bianchin Scarpa
'Biagio 282' table light, 1968

H. 34,4 x 39 x 13.5 cm.
 Made by Flos, Milan.
 Botticino marble, white.
 Two little chips.
 Fiell, 1000 Lights, Vol. 2, Cologne 2005, p. 146 f.; Gramigna, Repertorio 1950-2000, Vol. 1, Turin 2003, p. 150.
€ 2.200 - 2.800



298

298
Giorgio Wiskemann;
Constantino Corsini
Table / floor lamp 'Spinnaker', 1969
(design)

H. 65 x 48.5 x 28 cm.
 Codiceicona, Verona 2020s.
 Chrome-plated sheet metal, metal tube, black lacquered sheet metal, black plastic.
 Marked: Manufacturer's sticker (2x).
 Included: original box and assembly instructions.
€ 1.500 - 2.000



299

299
Giancarlo Mattioli
Table light 'MT', 1969 (design)

H. 46 cm, Ø 44 cm.
 Sirrah, Milan.
 White lacquered sheet metal, chrome-plated metal wire.
 Ferrari, Light, Turin 2002, p. 144.
€ 2.000 - 3.000



300
Charles & Ray Eames
Armchair 'Soft Pad Lounge Chair - EA 222' with
Ottoman 'Soft Pad EA 223', 1969 (design)

H. 98.5 x 64 x 73 cm; stool: H. 42 x 56 x 56 cm.
 Vitra, Birsfelden, 2023.
 Cast aluminum, black, matte lacquer finish, brown leather.
 Marked: Manufacturer's sticker.
 Backrest adjustable.
€ 2.000 - 3.000



301



302

301
Gino Vistosi
Ceiling light 'Massera', 1960

H. 45 cm, Ø 41 cm.
Vistosi, Murano.
Chrome-plated sheet metal, glass, red, white, orange, and blue.
Marked: Manufacturer's sticker.
€ 350 - 400

302
Emil Stejnar
Ceiling light, c.1955

H. 61 cm (with suspension), Ø 46 cm.
Nikoll Lamps, Vienna.
Sheet brass, brass rod, metal rods, sheet metal, painted white, clear glass.
€ 500 - 600

303
Aldo Londi
Table lamp, around 1960

H. 42 cm, Ø 21 cm.
Bitossi, Montelupo.
Earthenware, glazed white and blue.
Marked: Italy B3/21.
€ 500 - 600

304
Aldo Londi
Table light, c. 1960

H. 49.5 cm, Ø 41 cm.
Bitossi, Montelupo.
Earthenware, glazed blue on white, gold leaf, brass sheet, cream-colored fabric shade.
Marked: 4337 / 28 ITALY (handwritten).
€ 500 - 600

305
Aldo Londi
Table light, c. 1960

H. 62 cm, Ø 46 cm.
Bitossi, Montelupo for Bergboms, Malmö.
Fayence, glazed white and brown, white textile shade.
Marked: Bergboms, sales label.
€ 500 - 600

306
Italy
Wicker chair, c. 1960

H. 179 x 78 x 77.5 cm.
Bamboo cane, rattan weave.
Included: Cushions with brown textile cover from Cassina.
€ 700 - 800

307
Italy
Ceiling light 'Cocoon', 1960s

Ø 55 cm.
Metal wireframe, cocoon cover, tubular brass.
€ 550 - 600
Photo: 139560.jpg



307



306



308

308
Stilnovo, Milan
Two wall lights '2143', 1960s (design)

H. 28 x 14 x 8 cm.
Chrome-plated brass, white glass, black lacquered sheet metal.
€ 700 - 800



303



304



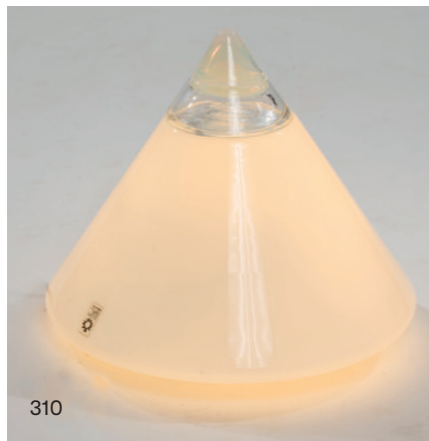
305



309

309
Knut Hesterberg
'Propeller - K 9' coffee table, 1964
(design)
 H. 46.5 cm, Ø 110 cm.
 Ronald Schmitt, Darmstadt.
 Polished aluminum, glass.
 € 500 - 600

310
Giusto Toso
Table light 'Rio', 1960s
 H. 30 cm, Ø 36 cm.
 Leucos, Milan.
 Glass, colorless, yellow, opaque white and opal white.
 Marked: Manufacturer's label and embossing.
 € 450 - 500



310

311
Peippo Rauni (ATTR.)
Stool, c. 1965
 H. 40 x 34.5 x 35 cm.
 Kervo Snickerifabrik, Finland for Stockmann Oy, Helsinki (ATTR.).
 Birch wood, painted reddish black.
 € 350 - 400

312
Carlo Emanuele Ponzio
Pendant light 'Alicante', c. 1967
(design)
 H. 43 x 50 cm.
 Harvey Guzzini, Milan.
 White plastic, chrome-plated metal tube.
 € 300 - 400



311

313
Helmut Magg
Armchair '1319 K', 1966
 H. 84.5 x 54 x 46 cm.
 Deutsche Werkstätten, Munich.
 Chrome-plated tubular metal, canework.
 € 500 - 600



313

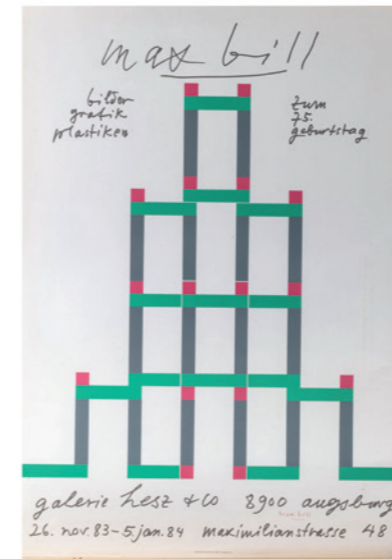


312

314
Ernst Moeckl
Two chairs 'Kangaroo Chair' - 'Z-Chair' - 'Squatting Man', 1968
 H. 76 x 45 x 54 cm.
 Horn GmbH & Co. KG, Rudersberg.
 Integral foam (Baydur), painted brown.
 From the estate of the inventor of the 'Baydur' material from which these chairs, the 'Targa' armchairs by Klaus Uredat and also the early 'Panton' chairs were made.
 € 700 - 900



314



315

315
Herbert Bayer; Max Bill
Two posters: 50 years of Bauhaus Stuttgart, 1968 and Max Bill Exhibition Augsburg, 1984
 59.3 x 41.8 cm and 84.0 x 59.5 cm.
 2 sheets color serigraphy on paper.
 Bauhaus poster published by the Württembergischer Kunstverein Stuttgart. The latter signed lower right: max bill (red fineliner).
 In a graphics portfolio.
 € 300 - 500



316
Östen Kristiansson; Uno Kristiansson
Two wall lights, c. 1968
 H. 42 cm, Ø 19 cm.
 Luxus, Vittsjö.
 White lacquered wood, white plastic.
 Marked: Manufacturer's sticker (1x).
 € 350 - 400



316



317

Ingo Maurer

Ceiling light 'Niju-Ichi' from the 'Uchiwa' series, 1970s

H. max. 250 cm, Ø 70 cm.

Design M, Maurer Ingo, Munich.

Bamboo cane, rice paper, cotton cord, brass.

The light consists of 32 fans!

€ 15.000 - 20.000



318

Ingo Maurer

Ceiling light 'Hana II' from the 'Uchiwa' series, 1974

H. max. 93 cm, Ø 84 cm.

Design M, Ingo Maurer, Munich.

Bamboo cane, rice paper, fabric, cream-white.

Bauer (Ed.), Ingo Maurer, Making Light, Munich 1992, p. 69, p. 250; cf. Dessecker, Designing with Light, Munich 2008, p. 72.

€ 5.000 - 6.000

319

**Ingo Maurer
'Uchiwa III' wall light, 1973 (design)**

H. 73 x 57,5 x 14 cm.
Design M, Ingo Maurer, Munich.
Bamboo cane, rice paper.
Bauer (ed.), Ingo Maurer. Making Light, Munich 1992, p. 249;
Cat. Design M, n. d., n. p.
€ 1.500 - 2.000

320

**Ingo Maurer
Ceiling light 'Zanil II', 1974**

Total height 64 cm, Ø 62 cm.
Design M, Ingo Maurer, Munich.
Cork, leather straps.
Marked: Manufacturer's mark.
Cork with losses to the edges.
€ 500 - 600



320

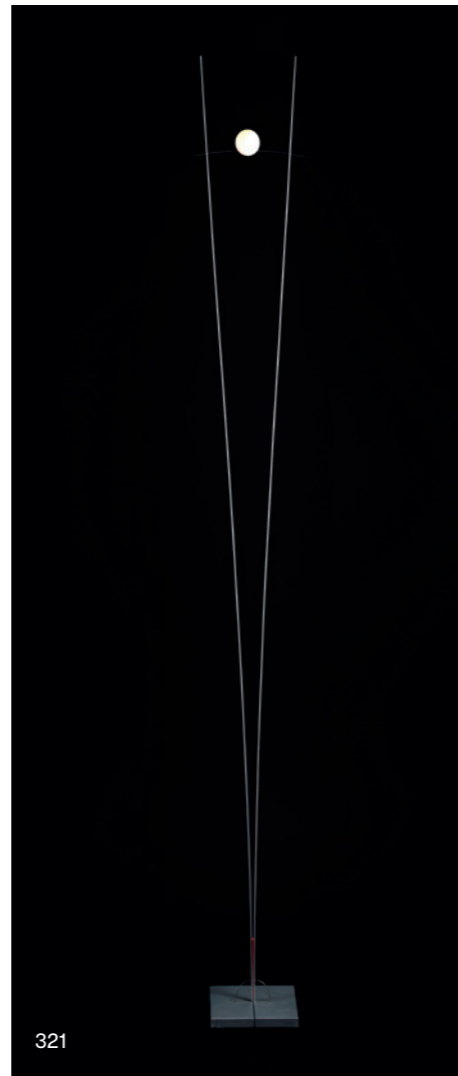


319

321

**Ingo Maurer; Franz Ringelhan
'Ilios' floor lamp, 1983 (design)**

H. 191 cm.
Design M, Maurer, Ingo, Munich.
Metal, metal rods, painted black, orange Plexiglas
insulator white glass.
€ 450 - 500



321



322

322

**Ingo Maurer
Ceiling light 'Oh Mei Ma - silver', 1993 (design)**

H. 140 - 300 cm (max.) x 130 cm.
Design M, Ingo Maurer, Munich.
Paper, silver-plated, metal.
In original box. The image is for illustrative purposes only.
Cat. Ingo Maurer, We believe in the spirit of light (2011/2012), p. 63.
€ 3.800 - 4.200

323

Angelo Mangiarotti
Console table 'Eros', 1971 (design)

H. 72 x 40 x 165 cm.
Skipper, Milan, 1980s.
White marble, gray veins.
Burkhardt, Angelo Mangiarotti, Milan 2010, p. 302.
€ 4.000 - 6.000

324

Sergio Mazza; Giuliana Gramigna
Two ceiling lights 'Padachroma', 1970 (design)

H. 14 cm, Ø 50 cm.
Quattrifoglio, Rozzano.
Chrome-plated sheet metal, steel cable.
Rewired.
€ 1.000 - 1.200



324



323

325

Cini Boeri
Chair 'Botolo', 1973 (design)

H. 76 x 53 x 55 cm.
Arflex, Milan, 2020s.
Black lacquered metal tube, white sheepskin, casters.
Marked: Manufacturer's logo woven into the underside.
Gramigna, Repertorio 1950-1980, Milan 2001, p. 383.
€ 1.200 - 1.800

326

Gino Sarfatti
Table light '607', 1971

H. 31.8 cm, Ø 24.5 cm.
Arteluce, Milan.
Aluminum, crème-white shrink varnish.
Romanelli / Severi, Gino Sarfatti, Milan 2012, p. 440.
€ 1.200 - 1.500

327

Gino Sarfatti
Table light '607', 1971

H. 31.5 cm, Ø 24.5 cm.
Arteluce, Milan.
Aluminum, gray shrink varnish.
€ 1.200 - 1.500



325



326

327



328

328
Sandro Petti
Two bedside tables, 1970s
 H. 50.5 x 45 x 45 cm.
 Brass, brown-tinted mirror glass.
 Marked: Manufacturer's sticker.
€ 1.000 - 1.500

329
César Baldaccini (César)
Table light 'Argos', 1970s
 H. 53.5 x 14 x 29.5 cm.
 Daum Frères, Nancy.
 Glass, clear, brown fusions.
 Marked: Daum France (engraved).
 Shade professionally renewed.
€ 800 - 900



329

330
Charles & Fils, Paris
Two table lights, 1970s
 H. 74 cm, Ø 39 cm.
 Maison Charles, Paris.
 Sheet metal, metal tube, gold-colored.
 Marked: Manufacturer's stamp.
€ 800 - 1.200

331
Michel Armand
Table light, 1970s
 H. 60 cm.
 France.
 Cast brass, nickel-plated.
€ 800 - 900



331



330

332
Carlo Nason
Hanging light 'LS 116', c. 1970

Ø 40 cm.
 AV Mazzega, Murano.
 Glass, opaque white, opal white, sheet metal.
 Chiesa, Carlo Nason, glass designer, handle with care,
 Milan 2025, p. 87.
€ 1.800 - 2.000

333
Angelo Mangiarotti
Dining / console table 'Eros', 1971 (design)

H. 72.5 x 202 x 111.5 cm.
 Skipper, Milan.
 White marble, gray veined.
 Chips on the edge of the marble top.
 Burkhardt, Angelo Mangiarotti, Milan 2010, p. 302.
€ 4.000 - 5.000



332



333

334

Jonathan De Pas; Donato D'Urbino; Paolo Lomazzi
Two shelves from the modular shelving system 'Brick', c. 1970

H. 143.5 x 96 x 32 cm.
Collezione Longato, Padua.
Plastic elements, white and orange.
Marked: Manufacturer's information (embossed).
Can be assembled modularly.
€ 900 - 1.200



334

335

Just Toso
Two table lights 'Panta', c. 1970

H. 19.3 cm, Ø 36 cm.
Leucos, Milan.
Opalescent glass, sheet metal.
Marked: Manufacturer's sticker (1x).
€ 1.000 - 1.200

336

Gruppo Archizoom; Paolo Deganello; Gilberto Corretti ; Andrea Branzi; Massimo Morrozzi; Dario Bartolini; Lucia Bartolini
Two armchairs 'AEO', 1973 (design)

H. 105 x 85 x 77 cm.
Cassina, Milan.
Gray leather, gray varnished metal tube, gray plastic, steel strip, multicolored textile cover.
Marked: Manufacturer's data.
Included: two original pillowcases.
Gramigna, Repertorio 1950-1980, Milan 2001, p. 378.
€ 1.200 - 1.800



335



336



337

337

Etienne Fermigier (attr.)
Three ceiling lights, c. 1970

H. 80 cm, shade Ø 22 cm.
Metal tube, strip metal, painted black, sheet metal, chrome-plated, painted white.
€ 800 - 1.200

338

Carlo Nason (attributed)
Floor lamp, 1970s

H. 103.5 cm, Ø 39 cm.
AV Mazzega, Murano (attributed).
Glass, opaque white, colorless.
€ 1.500 - 1.800



338



340

339

Giusto Toso
Two table lights 'Ebe', c. 1970

H. 32-25 x 29 cm.
Leucos, Milan.
Colorless glass, opal white gradient, white plastic or white lacquered sheet metal. Marked: Manufacturer's label (1x), manufacturer's stamp (1x).
€ 900 - 1.200



339

340

Toni Zuccheri (attributed)
Three wall lights 'Quilt', around 1970

22-42 x 22.5-42 x 13-17 cm.
Venini, Murano.
Glass, colorless and brown, white lacquered sheet metal.
Marked: Manufacturer's mark.
€ 900 - 1.200



341

342

341
Carlo Nason
Wall lamp 'LS 184', 1970s

Ø 51 cm.
 AV Mazzega, Murano.
 Cast glass, opal white, satin-finished, partially 'pulegoso' technique.
 Marked: Manufacturer's sticker.
 Chiesa, Carlo Nason, glass designer, handle with care, Milan 2025, p. 90.
€ 2.500 - 3.000

342
Carlo Nason
Ceiling light 'Polpo' - 'LS 134', 1974 (design)

H. 48 cm, Ø 40 cm.
 AV Mazzega, Murano.
 Glass, opal and opaque white.
 Chiesa, Carlo Nason, glass designer, handle with care, Milan 2025, p. 92.
€ 2.200 - 3.000



343

343
Mario Bellini
'La Basilica' table, 1976

H. 74 x 240 x 91,5 cm.
 Cassina, Milan.
 Ashwood.
 Gramigna, Repertorio 1950-2000, vol. 1, Milan 2003, p. 240.
€ 2.500 - 3.500

344
Otl Aicher
Prototype shelving system, c. 1975

Side panels: H. 188.5 x 50 cm; shelves: 80 x 22.5 or 80 x 48 cm.
 Siegel, Günzburg.
 Chrome-plated metal rods.
 Eight side panels, four cross supports, six deep shelves, 16 shelves.
€ 1.000 - 1.500

345
de Sede Design Team
'DS 47' armchair with ottoman, 1976

Armchair H. 70 x 90 x 95 cm, Ottoman H. 236 x 55 x 58 cm.
 DeSede, Klingnau.
 Wooden construction, leather, brown.
€ 1.800 - 2.500



344



345

346

**Ernst Lüthy (attributed)
Armchair '1401', 1977 (design)**

H. 74 x 78.5 x 66 cm.
Atelier-L, Switzerland.
Light brown leather, chrome-plated tubular metal, black plastic.
Marked: Model and manufacturer's details (embossed).
€ 800 - 1.200



346

347

**Pompeo Pianezzola
Coat rack 'Menhir', 1970s**

H. 220 - 300 cm.
Appiani Selezione, Italy.
Solid walnut, teak, elm, and fruitwood.
€ 2.000 - 2.500



347

349

**Carlo Nason
Ceiling light, c. 1970**

H. 47 cm, Ø 35.5 cm.
Made by A.V. Mazzega, Murano.
White, green, and blue glass; nickel-plated sheet metal.
Chiesa, Carlo Nason, glass designer, handle with care, Milan 2025, p. 87.
€ 2.800 - 3.200



349

350

**Angelo Brotto (attributed)
Wall lamp, 1970s/80s**

H. 77 x 77 x 18 cm.
Esperia, Poggibonsi.
Stainless steel sheet, clear foam glass.
€ 1.500 - 2.000



350

351

**Karl Springer
Large 'Knife Edge Dining Table' dining table, c. 1979**

H. 75 x 244 x 123 cm.
Karl Springer Ltd., New York.
Wood covered with cream-colored goatskin.
Marked: manufacturer's plaque.
€ 3.000 - 4.000



351

348

**Alfredo Barbini
Table lamp 'Medusa', 1970s**

H. 60 cm, Ø 41 cm.
Alfredo Barbini, Murano.
Brass tube, brass sheet, cased glass, colorless and violet, vapor-coated with metal oxide powder.
Marked Manufacturer's engraving.
€ 1.000 - 1.500



348

352

**AV Mazzega, Murano
Ceiling light, 1970s**

H. 17.5 cm, Ø 51 cm.
Glass, grayish and opaque white.
€ 400 - 500

353

**Sweden
Bookcase, 1970s**

H. 37 x 42 x 35 cm.
Teak, birch.
€ 350 - 400

354

**Willy Daro (in the style of)
Table, 1970s**

H. 47.5 cm, Ø 80 cm.
Bronze, brass, gold-colored, colorless glass.
€ 700 - 800

355

**Giovanna Noti Massari; Renato
Toso
Pendant light 'Selene', c. 1971**

H. 34 cm, Ø 45 cm.
Leucos, Milan.
Glass, colorless, opalescent, and red.
€ 600 - 700

356

**Thomas Jelinek
Small chest of drawers 'Comet', c.
1971**

H. 70 x 52 x 49 cm.
IKEA, Älmhult.
Wooden box construction, pine, pine veneer,
partially painted brown.
€ 400 - 500



360



354

357

**Maija Liisa Komulainen
Four wall appliques 'Fuga', c. 1970**

H. 40 x 6.5 - 21.5 cm.
Raak, Amsterdam.
Metal tube, painted white inside, copper-
colored outside.
€ 600 - 700

358

**Richard Sapper
'Tizio' desk light, 1972**

H. 119 cm (max.).
Artemide, Milan.
Sheet metal, painted black, black plastic.
Marked: Manufacturer's mark, paper label.
Very early, rare execution.
€ 350 - 400

359

**Richard Sapper
Floor light 'Tizio', 1972 (design)**

H. max. 184.5 cm.
Artemide, Milan.
Black lacquered sheet metal, black and
red plastic, black lacquered tubular metal.
Marked: Manufacturer's mark; paper label.
€ 400 - 500

360

**Walter & Moretti
Table light, 1972**

H. 39.5 cm.
Walter & Moretti, France.
Sheet aluminium.
Marked: walteretmoretti.
€ 450 - 600

361

**Carlo Nason
Table light 'Nana', 1973**

H. 33 - 56 cm (max.) x 34 x 13.5 cm.
Lumenform, Scorzè.
Metal, sheet metal, painted gold-yellow.
€ 300 - 350

362

**Italy
Ceiling light, 1970s**

H. 128 cm, Ø 47 cm.
Colorless, iridescent glass, brass tube, brass
sheet.
€ 700 - 800



352



353



355



357



356



358



359



361



362

363

Mario Bellini
Floor lamp 'Area - 160/210', 1974
(design)

H. 156 cm.
Artemide, Milan.
Cast metal, painted gray, tubular metal,
sheet metal, painted white, white plastic,
white fiberglass shade.
Marked: Manufacturer's mark.

€ 400 - 500

364

Olaf von Bohr
Shoe rack / chest of drawers
'4963', c. 1974

H. 76 x 72 x 34 cm.
Kartell, Noviglio.
White plastic.
Marked: Kartell 4964. Designer: OLAF von
BOHR. Made in Italy (embossed).

€ 350 - 400

365

Italy
Table light, 1970s

H. 56.5 x 30 x 30 cm.
White plastic, aluminum tube, black plastic.

€ 400 - 500

366

Carlo Nason
Table light, c. 1970

H. 36 cm, Ø 35 cm.
AV Mazzega, Murano.
Metal, sheet metal, glass, clear and white.

€ 400 - 500

367

Giulio Polvara; Centrokappa

Shelf element from the modular shelving sys-
tem 'Polvara - 4768' - '4770', 1975 (design)
120 x 81.5 x 35 cm.

Kartell, Noviglio.
Painted polyurethane, black and green.
Marked: Manufacturer's mark (raised).

€ 300 - 400



369



371

368

Kazuhide Takahama
Ceiling light 'Sirio S', 1977 (design)

H. 52 x 72 x 11.5 cm.
Sirrah, Milan.
Tubular steel, sheet steel, painted white.
Marked: Manufacturer's label with designer
information.

Image online.

€ 400 - 500

369

Carlo Nason
Table light 'LT 389', c. 1977

H. 54.5 cm, Ø 22.5 cm.
AV Mazzega, Murano.
Brass sheet, clear glass with finely scattered
gold foil.

€ 400 - 500

370

Hans-Agne Jakobsson
Floor lamp, 1970s

H. 153 cm.
Hans Agne Jakobsson AB, Markaryd.
Brass tube, brass sheet, beechwood, white
fabric shade.
Marked: Manufacturer's sticker.

€ 500 - 600

371

Gallotti & Radice, Cermenate
Table light, 1970s

H. 29.5 x 15 x 12 cm.
Chrome-plated sheet metal, glass, frosted,
light green.
€ 600 - 700

372

Seguso Vetri d'Arte, Murano
Two side tables, 1970s/80s

H. 56 cm, Ø 50 cm.
Seguso Vetri d'Arte, Murano; Morex, Italy.
Colorless glass, blue, fruitwood.
Marked: Manufacturer's label (Morex).

€ 600 - 800

373

Alchemy Studio, Milan
**Lot of Alchimia advertising materi-
als from 1979/80**

Studio Alchymia: Technical catalogue,
edition 1980. bau.haus. art collection, Milan
1980, with: Poster bau.haus collezione 1980,
H. 61 x 84,5 cm.; Studio Alchymia: Tech-
nische Unterlagen 1979, Milan 1979, with:
Poster, H. 61 x 84,5 cm.; letter "unmögliche
Möbel", August 1979.
Image online.
€ 500 - 600



363



365



366



364



367



370



372

The following catalog numbers (374-379) are designs by the German interior designer Heino Stamm.

Since founding his own planning office in 1970, the trained carpenter and interior designer Heino Stamm has been able to draw on an extensive portfolio. Stamm designed interiors for hotels, clubs, and private homes, designed furniture, and advised clients.

The acrylic glass objects offered here date from this period and exude the unmistakable charm of the 1980s.

The large coffee table from the 'Odeon' series, which is stacked on several levels and can be electrically illuminated, is a testament to particular finesse. From the same series comes the goatskin-covered console table, manufactured by Tura in Milan, which served as the inspiration for the other designs presented here.

Thanks to the skillful choice of materials, Heino Stamm's furniture blends elegantly into the room's ambience without being intrusive.



374
Heino Stamm
Coffee table 'Odeon', 1970s

H. 58 x 92.5 x 92.5 cm.
Möbelwerkstatt für Acrylglas, Innsbruck.
Acrylic glass, brass sheet.
Heino Stamm, Stamm Design, n.d., n.p.
€ 3.000 - 4.000

375
Heino Stamm
Library ladder, 1980s

H. 106 x 59 x 30 cm.
Möbelwerkstatt für Acrylglas, Innsbruck.
Metal tube, black lacquered, acrylic glass.
€ 1.200 - 1.500





376

376

**Heino Stamm
Side table, 1980s**

H. 45 x 70 x 70 cm.

Tura, Milan; Möbelwerkstatt für Acrylglas, Innsbruck.

Acrylic glass, wood covered with beige goatskin.

Marked: Designer's sticker.

€ 1.500 - 2.500



377

377

**Heino Stamm
Two bedside tables, 1980s**

H. 43.5-48 x 55.5-64 x 40 cm.

Tura, Milan; Möbelwerkstatt für Acrylglas, Innsbruck.

Acrylic glass, wood covered with brown goatskin.

Marked: Designer's sticker.

€ 2.000 - 3.000



378



379

378

**Heino Stamm
Console 'Odeon', 1970s**

H. 72 x 125 x 35 cm.

Tura, Milan; Möbelwerkstatt für Acrylglas, Innsbruck.

Acrylic glass, wood covered with yellowish/beige goatskin.

€ 2.500 - 3.000

379

**Heino Stamm
Desk, 1980s**

H. 75 x 170 x 85 cm.

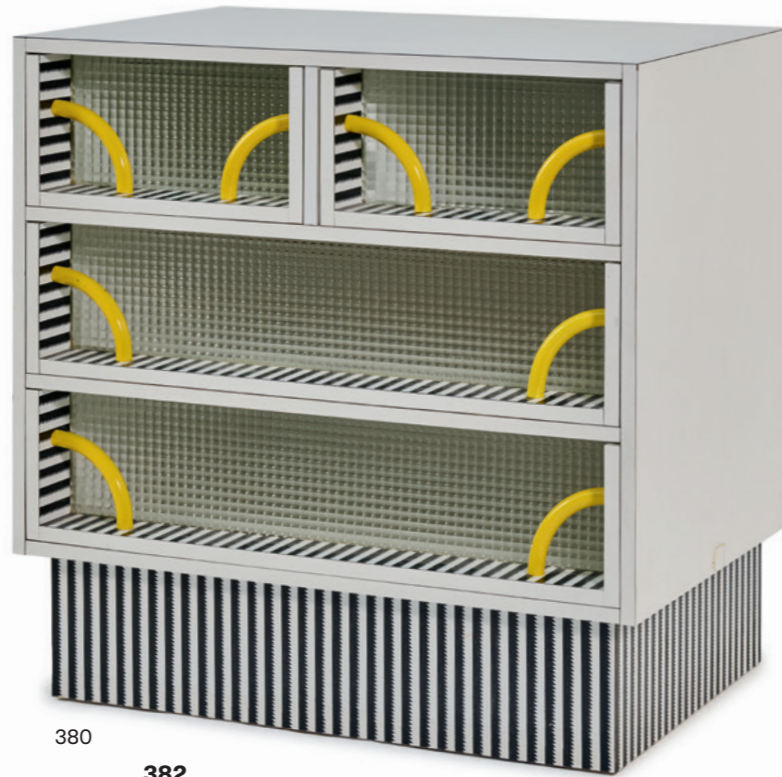
Tura, Milan; Möbelwerkstatt für Acrylglas, Innsbruck.

Acrylic glass, wood covered with yellowish/beige goatskin.

€ 3.000 - 4.000

380
Michele De Lucchi
Chest of drawers 'Atlantic', 1981 (design)

H. 90 cm; 90 x 60 cm.
 Memphis, Milan, 1980s.
 Wooden box construction with laminate, safety glass, and yellow lacquered tubular metal.
 Memphis Milano, exhibition brochure, p. 10.
€ 1.800 - 2.000



380

381
Gerard Taylor
Two table lights 'Picadilly', 1982 (design)

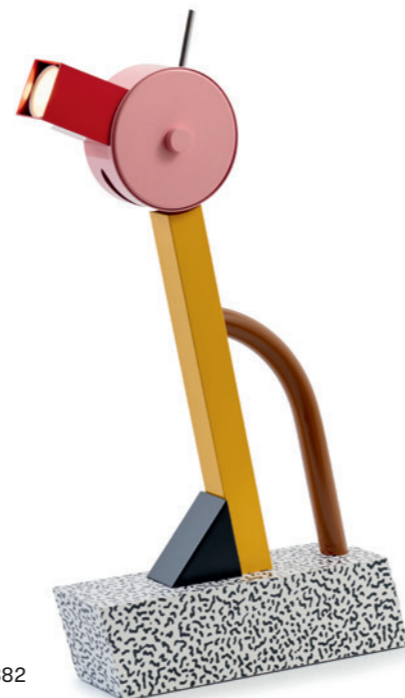
H. 45 x 15 x 11 cm.
 Memphis Milano, c. 1993.
 Sheet metal, metal tube, chrome-plated, varnished or laminated.
 Marked: Manufacturer's metal plaque Memphis Milano GERALD TAYLOR 1982, MADE IN ITALY.
€ 1.000 - 1.200 (Regular taxation)



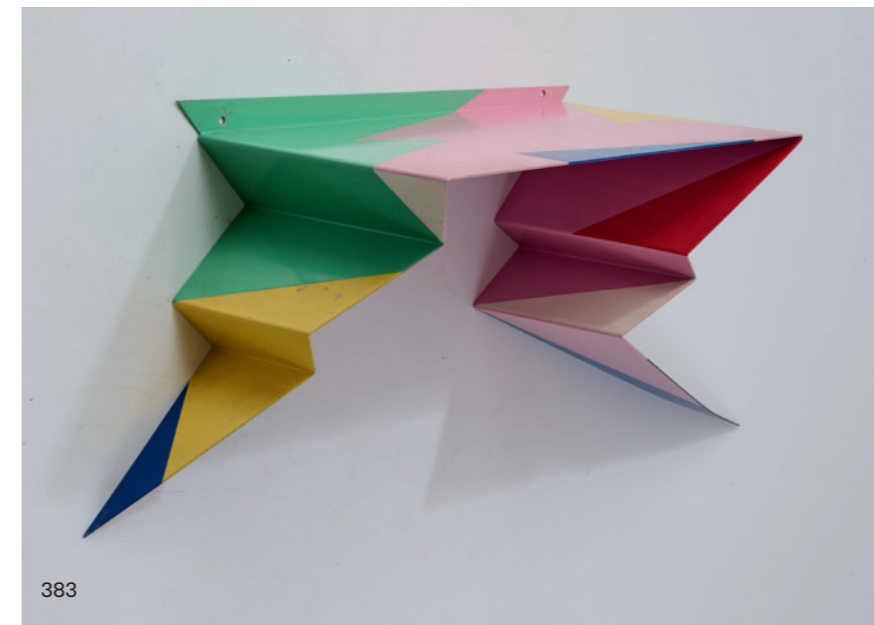
381

382
Ettore Sottsass
Table light 'Tahiti', 1981

H. 65-71 x 40 x 10 cm.
 Memphis, Milan, 2020s.
 Sheet metal, tubular metal, polychrome lacquer, wood with laminate coating, 'Bacterio' pattern.
 Marked: Manufacturer's plaque.
 In original packaging, including certificate and assembly instructions.
€ 600 - 800



382



383

383
Alessandro Mendini; Bruno Gregori
Wall console 'Bracchino', 1984

H. 38 x 91.5 x 28 cm.
 Zabro / Nuova Alchimia, Milan.
 Sheet metal, polychrome lacquer.
 Marked: Manufacturer's plaque.
€ 1.200 - 1.800

384
Michele De Lucchi
Two-seater Sofa 'Lido', 1982 (design)

H. 95 x 150 x 96 cm.
 Memphis Milano, c. 1993.
 Metal, wood, colored lacquer, laminate, upholstery red, light blue, green, purple.
 Marked: Manufacturer's metal plaque Memphis Milano M. DE LUCCHI 1982, MADE IN ITALY.
 New textile upholstery by Kvadrat. One sofa leg restored.
 Cat. Memphis Milano, Milano 1991, p. 69.
 From the Otto Bantele Collection.
€ 2.000 - 3.000



384



385
Lothar Klute
Side table, 1982

H. 47 cm, Ø 110 cm.
Klute, in der Waldemai, Schmallingenberg.
Forged bronze, dark patina, bubbly cast glass.
Marked: Artist's signet LK 82.
€ 1.800 - 2.200

386
Lothar Klute
Wall/ceiling light, c. 1990

H. 50 x 47 cm.
Klute, in der Waldemai, Schmallingenberg.
Forged bronze, bubbly cast glass.
€ 600 - 800

388
Gruppe de Sede Design Team
Six armchairs 'DS 200', 1980s

H. 70 x 63 x 55 cm.
DeSede, Klingnau.
Chrome-plated tubular metal, red leather.
€ 2.500 - 3.500



389
Paolo Piva
Sofa table 'Alanda', 1981 (design)

H. 29,5 x 100 x 54,5 cm.
B&B Italia, Novedrate, Como.
Black lacquered metal tube, clear glass.
€ 400 - 500

390
Bernard Vuarnesson
'Par4' coffee table, 1980s

H. 31.5 x 54.5 x 54.5 cm.
Bellato, Rosta.
Wooden construction, mahogany, mahogany, veneer, sheet aluminum.
€ 2.000 - 3.000



387
Wolfgang Laubersheimer
'Verspanntes Regal' shelf, 1982

H. 240 x 32 x 32 cm.
Wolfgang Laubersheimer, in the 1980s.
Sheet steel, steel rope.
Schomberg (ed.), Pentagon, Informal Design, Cologne 1990, p. 85; Cat. 100 Masterpieces, Vitra Design Museum, Weil / Rhine 1996, p. 230 f.
€ 1.500 - 2.000



391

Shiro Kuramata
'How High The Moon' easy chair, 1986

H. 72.5 x 94 x 83 cm.
Vitra, Birsfelden, c. 2000.
Nickel-plated expanded metal.
Seat slightly bent.
Fiell, 1000 Chairs, Cologne 1997, p. 575.
€ 7.000 - 9.000



392

Tom Dixon
Chair 'S-Chair', 1988 (design)

H. 104 x 50,5 x 51 cm.
Cappellini, Milan.
Cast metal, painted gray, cowhide.
Marked: Manufacturer's mark.
Fiell, 1000 Chairs, Cologne 1997, p. 595.
€ 1.200 - 1.500



392

393

Marc Newson
'Orgone' table, 1989 (design)

H. 36,5 x 159 x 68 cm.
Cappellini, Milan.
Plastic, reinforced with Fiberglas, painted black.
Marked: manufacturer's sticker.
Albus et al., Moderne Möbel 150 Jahre Design,
Königswinter 2009, p. 226.
€ 1.800 - 2.200

394

Achille Castiglioni
Wall / ceiling light 'Taraxacum 88', 1988 (design)

H. 27 cm, Ø 61 cm (with light source).
Flos, Brescia.
Chrome-plated sheet metal, light source.
Marked: Manufacturer's sticker.
€ 400 - 500



393



394



395
Hermann Waldenburg
Unique lounge chair 'Schleudersitz', 1984/85

H. 91.5 x 60 x 86 cm.
 Hermann Waldenburg, Augsburg.
 Sheet aluminum, partly anodised, metal springs, gray synthetic leather.
 Comes with an additional set of seat cushions in black.
 The Designer told us that only 5 to 6 pieces were executed. The leatherette cover was used in VW pick-up trucks in former times. This is the only one with a quintet sheet as base.
 Schriil Bizarr Brachial Das Neue Deutsche Design Der 80er Jahre, p. 98; Kunstforum, vol. 82, p. 68; Deutsches Design, p. 204; Prototypen der Designwerkstatt, p. 53.
€ 5.000 - 6.000



396

396
Hermann Waldenburg
Armchair 'Qubus', 1987

H. 93 x 82.5 x 65 cm.
 Hermann Waldenburg, Augsburg.
 Perforated sheet metal, white lacquered wood, gray imitation leather.
 Marked: embossed stamp 'W'.
€ 700 - 900



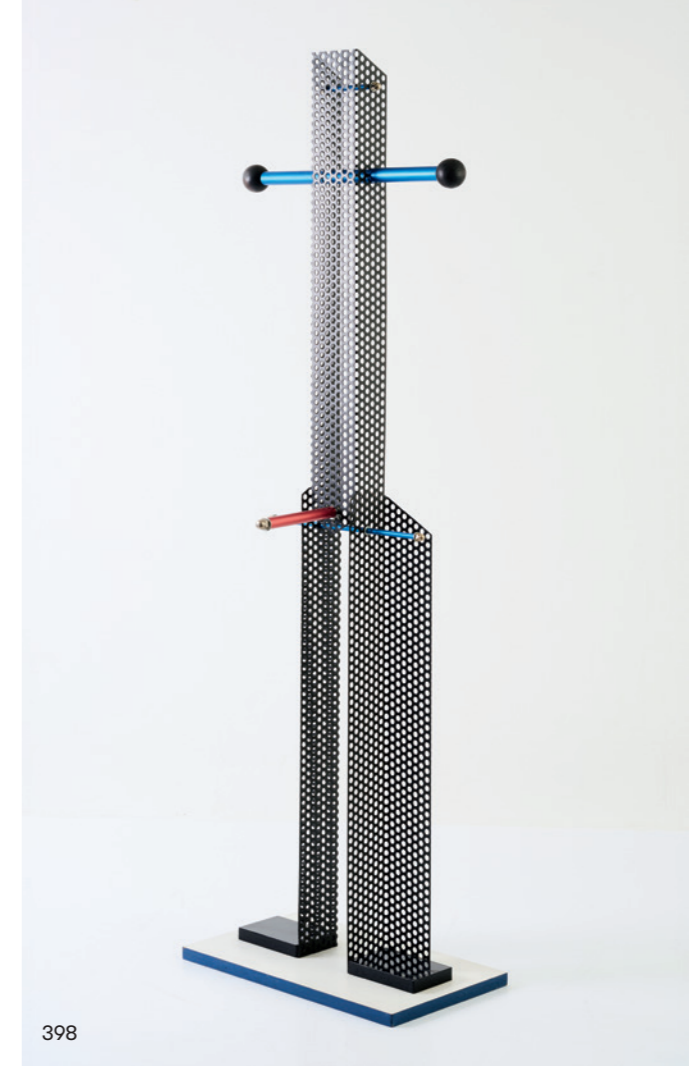
397

397
Hermann Waldenburg
Shelf 'Kreuzung', 1988

H. 134.5 x 102.5 x 47.5 cm.
 Hermann Waldenburg, Augsburg.
 Nickel-plated sheet steel, clear glass.
 Marked: W (incised).
€ 700 - 900

398
Hermann Waldenburg
Unique valet stand 'Charles', 1989

H. 160.5 x 50 x 30 cm.
 Chipboard, white laminate, sides blue, wood, painted black, black perforated metal plate, tubular metal, anodized red and blue. Rubber.
 Marked: signed and dated by the designer: "Charles", Stummer Diener 1989, Signatur H. Waldenburg, Signet, Unikat.
 Inscribed, signed and dated by the designer himself.
 Industrial Design 10, p. 243.
€ 2.000 - 3.000



398



399
Gian Nicola Gigante; Antonio Zambusi; Marilena Boccato
Two wall lights 'Neon', c. 1981
 H. 30 x 138,5 x 31 cm.
 Zerbetto, Padua.
 Metal tube and sheet metal, painted red, perforated sheet metal, painted black, black plastic, neon tubes.
€ 900 - 1.200



400
Hans-Walter Stemann
TV/video/audio console, 1980s
 H. 64,5 x 82 x 55 cm.
 Sheet iron, blackened, brushed, partially fire-gilded.
 With Hans-Walter Stemann catalog.
€ 700 - 900

400

401
Stefan Herzog
Two chairs, 1980s
 H. 91,5 x 58 x 71,5 cm.
 Werkstatt Stefan Herzog, Munich.
 Cast bronze, wrought iron, brass, white textile cover.
€ 3.000 - 4.000



401



402

402
Stefan Herzog
Two-part lounger, c. 1989
 H. 83-95 x 55,5 x 160,5-177 (armchair only: 88,5-104) cm.
 Werkstatt Stefan Herzog, Munich.
 Cast metal, painted blue, wrought iron, brass, seat cushion with floral, green textile cover.
€ 2.000 - 3.000

403
Tom Dixon
Set of two 'S' chairs, 1988
 H. 101,5 x 49 x 57 cm.
 Cappellini, Milan.
 Cast metal, varnished gray, rush.
 Fiell, 1000 Chairs, Cologne, 1997. p. 595.
€ 1.500 - 2.000



403

404

**Giotto Stoppino; Lodovico Acerbis
Sofa table 'Menhir 1', 1980s**

H. 42.5 cm, Ø 81 cm.
Acerbis, Bergamo.

Solid green and gray marble, black lacquered tubular metal, black lacquered ash wood. Marked: Manufacturer's plaque with designer information.

€ 1.000 - 1.500



405

**Jasper Morrison
Two chairs 'Ply Chair', 1988
(design)**

H. 84 x 39 x 46.5 cm.
Vitra, Birsfelden, 2001.
Plywood.

Marked: Sticker with manufacturer and date information.

Vitra Overview 2002, Ditzingen 2002, p. 244;
Windlin & Fehlbaum, Cornel & Rolf, Projekt
Vitra, Basel 2008, fig. p. 352, p. 388.

€ 2.000 - 2.200

406

**Andrea Anastasio
Ceiling light 'Giocasta', 1992**

H. 110 cm.
Artemide, Milan.
Anodized metal, polychrome glass.
Marked: Manufacturer's embossing and
sticker.

€ 900 - 1.200

407

**Pelican Design; Niels
Gammelgaard; Lars Mathiesen**

Screen 'Labyrinth', 1992 (design)
H. 165.5 x 168 x 39 cm.
Fritz Hansen, Vässingerød, c. 1993.
Beechwood, beechwood lamellae, aluminum
sheet and tube.

€ 800 - 1.200 (Regular taxation)



407

409

409

**Leonard Ballweg
Floor lamp 'Zepp', 1990s (design)**

Max. h. 206 cm, l. 62 cm.
Industrial design, Munich.

Metal tube and sheet metal, painted black, metal wire and sheet
metal, chrome-plated, clear glass, frosted.

Marked: manufacturer's stickers (2x).

€ 700 - 800



408

408

**Gaetano Pesce
'Umbrella' folding chair, 1992**

H. 80,5 x 43 x 56 cm.
Zerodisegno, San Giuliano Vecchio.
Plastic, polychrome, aluminum.

Marked: manufacturer's mark.

€ 700 - 800

410

**Achille Castiglioni; Ferruccio Laviani
'40 / 80' easy chair, 1999**

H. 98.5 x 89 x 80.5 cm.
Moroso, Milan.

Stainless tubular steel,
textile cover in black and
neon yellow.

€ 500 - 600



410



414

Frank O. Gehry
Two floor lamps, 1993

H. 179.5 x 55.5 x 47 cm.

Kunzweiler, Weil/Rhine for Vitra, Birsfelden.

Pine squared timber (pitch pine), plywood with pine veneer, sheet metal.

This is a design by Gehry for the Vitra headquarters in Birsfelden, Switzerland; the lights were only produced in very small numbers and were only used in the company headquarters.

€ 5.000 - 6.000

411

Robert Wettstein
Coat rack 'ER', 1989

H. 182 x 33 x 35 cm.

Anthologie Quartett, Bad Essen.

Structural steel, wood, torso with 'English rose' textile by Driade, Italy.

€ 900 - 1.000

412

Robert Wettstein
Side table 'Podium', c. 1993

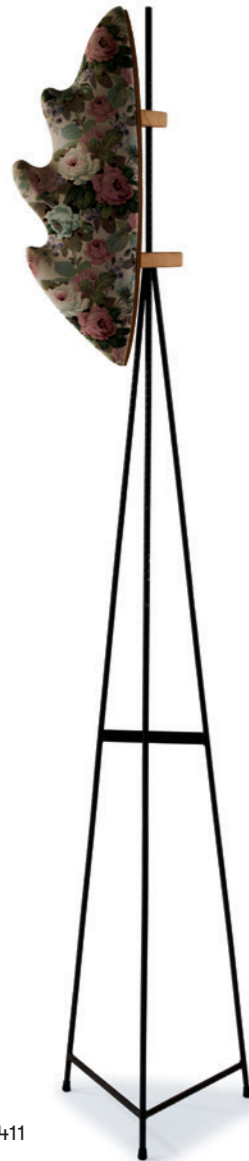
H. 85.5 x 60.5 x 25 cm.

Structure Design, Switzerland.

Beechwood, plywood, metal frame, parchment paper, partially gold-colored, black felt-tip pen.

Marked: Designer signature, No. 5.

€ 600 - 800



411

413

Frank O. Gehry
Two shelf lights, 1993

H. 31 x 55.5 x 47 cm.

Kunzweiler, Weil am Rhein for Vitra, Birsfelden.

Pine squared timber (pitch pine), plywood with pine veneer, sheet metal.

This is a design by Gehry for the Vitra headquarters in Birsfelden, Switzerland; the lights were only produced in very small numbers and were only used in the company headquarters.

€ 3.000 - 4.000



412



414



415

415
Florian Asche; Philipp Mainzer
Shelf 'SH 01 - MATE', 1996 (design)

H. 220 x 30 x 24 cm.
E 15, Frankfurt a. Main.
Oak, oiled.
Marked: Manufacturer's brand.
€ 700 - 800

416
Ulrich Görtz
Side table 'Palette', 2001

H. 47 x 55 x 50 cm.
Atelier Ulrich Görtz, Cologne.
Concrete, maple wood.
Marked: Artist's signature.
€ 1.500 - 2.000



416

417
C.R. & S. Riva 1920
Two side tables 'Eco' and 'Legno Vivo', 2007/2010

H. 30 - 40.5 cm, Ø 36 - 84 cm.
Riva 1920, Cantù, 2010s.
Solid cedar wood, casters.
Marked: Manufacturer's plaque.
€ 1.500 - 1.800



417



418

418
C.R. & S. Riva 1920
Two side tables 'Eco' and 'Legno Vivo', 2007/2010

H. 31,5 - 40.5 cm, Ø 36 - 59 cm.
Riva 1920, Cantù, 2010s.
Solid cedar wood, casters.
Marked: Manufacturer's plaque.
€ 1.000 - 1.500

419
Isao Hosoe
Table 'Oscar', 1991

H. 74 x 225 x 90 cm.
Cassina, Milan.
Tubular metal, black lacquered, partially leather-covered, blockboard, black lacquered. Marked: Manufacturer's imprint.
€ 1.500 - 2.000



419

420

**Humberto Campana;
Fernando Campana**

Shelf 'Cabana', 2003 (design)

H. 190 cm, Ø 115 cm (max.).

Edra, Milan, 2010s.

Metal tube, sheet metal, painted brown,
viscose threads.

€ 7.000 - 8.000



421

Tord Boontje

Side table 'Enchanted Forest', 2014

H. 47 x 55 x 34 cm.

Porta Romana, Farnham.

Plastic, black, gold-colored.

€ 4.000 - 6.000



421

422

Hella Jongerius

Two-seater sofa 'Polder' with ottoman, 2005 (design)

Sofa: H. 81 x 260 x 94 cm; Ottoman: H. 35.5 x 82 x 64 cm.

Vitra, Birsfelden, 2022.

Wooden construction, textile upholstery in shades of gray; black plastic.

Marked: Manufacturer's label and sticker.

Included: Certificate of authenticity from Vitra.

€ 2.500 - 3.500



422



423

423
Tom Dixon
Large floor lamp 'Cone', 2004
(design)

H. 160 cm, Ø 74 cm.
 Tom Dixon, London.
 Chrome-plated metal tube; black lacquered aluminum sheet.
 Height adjustable.
€ 500 - 600

424
Paolo Piva
Sofa table 'Alanda', 1981 (design)

H. 25.5 x 120 x 120 cm.
 B&B Italia, Novedrate, Como.
 Black lacquered metal tube, clear glass.
 Jahr (Ed.) *Moderne Klassiker Möbel, die Geschichte machen*, Hamburg 1998, p. 93;
€ 600 - 800



424

425
Antonio Citterio
Armchair 'Grand Repos' with Ottoman, 2011 (design)

Armchair: H. 115 x 72 x 86 cm; Stool: H. 40 x 60 x 60 cm.
 Vitra, Birsfelden, 2024.
 Tubular metal, cast aluminum, polished, beige bouclé fabric.
 Marked: Manufacturer's sticker.
 Backrest adjustable.
€ 2.800 - 3.500



425

426
Enrico Fratesi; Stine Gam
Table 'Epic Dining Table', c. 2019 (design)

H. 74 cm, Ø 130 cm.
 Gubi, Copenhagen, 2023.
 Travertine slabs.
 Marked: Manufacturer's sticker.
€ 2.000 - 3.000



426



427

427
Max Lamb
Armchair '005', 2022 (design)

H. 73 x 66 x 65 cm.
 Vaarni, Finland, 2023.
 Pinewood, oiled.
 Marked: Manufacturer's plaque with serial number "20060000069" and designer information.
€ 1.000 - 2.000

428
Konstantin Grcic
Two stools 'Stool One', 2006 (design)

H. 82 x 55 x 50 cm.
 Magis, Torre di Mosto.
 Cast aluminum, painted black and red.
 Marked: Manufacturer and designer's stamp.
€ 500 - 600



428

429

**Achille Castiglioni;
Pier Giacomo Castiglioni**

Clothes rack 'Servomanto', 1985

H. 193 cm.

Zanotta, Nova Milanese.

Tubular metal, varnished black, black plastic, cast iron.

Marked: Manufacturer's mark.

€ 300 - 350



429

430

Florian Schulz
Ceiling light 'Duos 36 - Central Pull', 1980s

H. 26 cm (shade), total H. 78-157 cm,
Ø 43 cm.

Florian Schulz GmbH Licht und Objekt, Ludwigsburg or VS Manufaktur, Ludwigsburg.

Brass sheet, brass sphere.

€ 600 - 700



430

431

JE Germany
Armchair, 1990

H. 76 x 57 x 50 cm.

Square tubular metal, dark gray lacquer, oak wood.

Marked: JE 001 D 1/1990.

€ 500 - 600



431

432

Florian Borkenhagen (attributed)
Floor lamp, 1990 (design)

H. 184 cm.

Tecta, Lauenförde, 2000s.

Birch wood, sheet metal, cast metal.

€ 500 - 700



432

433

Toni Cordero
Floor lamp 'Sibari', c. 1990

H. 193 cm.

Artemide, Milan.

Tubular metal, chromed, metal rods, polychrome glass, metal base, painted bronze-brown, cream-colored plastic.

Marked: manufacturer's metal plaque.

€ 500 - 600

434

Toni Cordero
'Sibari' table light, c. 1990

H. 91 x 45 x 42 cm.

Artemide, Milan.

Tubular metal, metal rods, chrome-plated, polychrome glass, metal base, painted bronze-brown, cream-colored plastic.

Marked: manufacturer's metal plaque.

€ 400 - 500

435

Giuseppe Righetto
Wall light 'Ducale', 1980s

H. 42.5 cm, Ø 11 cm.

Artemide, Mailand for VeArt, Milan.

Glass, colorless and green, brass sheet.

Image online.

€ 220 - 250



433

434

436

Jasper Morrison
Two bar stools from the 'Atlas System' series, 1992

H. 68 - 79 cm, Ø 40 cm.

Alias, Crusinallo.

Tubular aluminum, sheet aluminum, fabric cover, red and green.

€ 400 - 500

437

Jasper Morrison
Two side tables from the series 'Atlas System', 1992 (design)

H. 51 cm, Ø 60 cm.

Alias, Crusinallo, c. 1993.

Aluminum tube, plate, white laminate.

€ 350 - 400 (Regulat taxation)

438

Jasper Morrison
Bistro table from the 'Atlas System' series, 1992

H. 110 cm, Ø 59.5 cm.

Alias, Crusinallo.

Tubular aluminum, sheet aluminum, wood, white laminate.

€ 300 - 400



436

438

436

439

Sottsass Associati
Two table lights 'Aero - Spira', 1994 (design)

H. 30 cm, Ø 23.5 cm.

Venini, Murano, 1994.

Glass, colorless, white, and light blue, chrome-plated sheet metal.

Marked: Venini 94 (engraved).

Included: original boxes.

€ 600 - 700



439



440
Barnaba Fornasetti
Two floor lamps 'Sole', 1995
(design)

H. 60.3 x 18.5 x 25.5 cm.
 Antonangeli Illuminazione, Paderno Dugnano/Milan.
 White plastic, polychrome lithograph.
 Marked: brush mark, manufacturer's information (printed).
€ 500 - 600

441
Peter Hopmann
Ceiling light 'DMD47 - Powerpoint', 1995

H. 155 x 18 x 18 cm.
 DMD, Voorburg for Droog Design, The Netherlands.
 White plastic, integrated power outlet.
 Marked: Paper sticker with manufacturer and designer's information.
 In original packaging.
€ 800 - 900

442
Thomas Sandell
Table and floor lamp, 1990s

H. 71.5 cm, Ø 27 cm.
 Leucos, Milan.
 Glass, colorless, bottle green and red.
 Marked: Manufacturer's label (2x).
€ 500 - 600

443
Ron Arad
Small shelf on wheels 'Onda', 1996
(design)

H. 71 x 68 x 47 cm.
 Fiam, Pesaro.
 Clear glass, aluminum, casters.
 Marked: Manufacturer's sticker.
€ 500 - 600

444
Sergio Broschi
Floor lamp 'Big Bell', 1996 (design)

H. max. 160-242 cm, Ø 40.5 cm.
 Antonangeli Illuminazione, Paderno Dugnano/Milan.
 Aluminum sheet, white plastic.
 Marked: Manufacturer and designer embossing, manufacturer's sticker.
€ 500 - 700

445
Ron Arad
Two chairs 'FPE (Fantastic, Plastic, Elastic)', 1997 (design)

H. 78 x 43 x 55.5 cm.
 Kartell, Milan.
 Aluminum, polypropylene, black.
 Marked: Manufacturer and designer's information (embossed).
 Stackable.
€ 300 - 350



446

446
Ron Arad
Armchair 'Victoria & Albert Collection', 2000 (design)

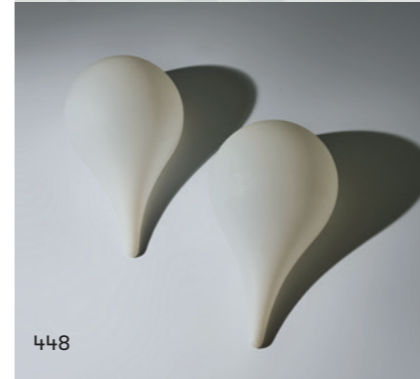
H. 70 x 71 x 61.5 cm.
 Moroso, Milan.
 ABS plastic, orange.
 Marked: Manufacturer's mark.
€ 500 - 600



447

447
Beata Bär; Hartmut Knell; Gerhard Bär
Chair 'World Expo 2000 - Africa', 2000

H. 84 x 45.5 x 64 cm.
 Bär & Knell, Bad Wimpfen, 2000.
 Recycled plastic.
 Marked: Embossed stamp: DKR KUNSTstoff by Bär + Knell WORLD EXHIBITION AFRICA PAVILION, handwritten: 66/400 BK 2000.
 Design for the two restaurants in the Africa Hall at the World Expo in Hanover in 2000.
 Plastic bags and other plastics from Africa were used, painted by children from Gambia. From an edition of 400 slightly different pieces.
€ 700 - 800



448

448
Benjamin Hopf; Constantin Wortmann
Floor lamp 'Drop-4' and two wall lamps 'Drop-3', 2000s

Floor lamp: H. 100 cm, Ø 36 cm. Wall lights: H. 47.5 cm x 27 x 20 cm.
 Hopf & Wortmann, Büro für Form, Munich.
 White polyethylene.
 Marked: Stamp (2x).
€ 500 - 600



449
Harry Thaler
'Pressed Chair', 2010

H. 79.5 x 53.5 x 50 cm.
 Nils Holger Moormann, Aschau.
 Aluminum sheet, painted black.
 Marked: manufacturer's sticker.
€ 450 - 500



447

450
Pierre Charpin
Table light 'PC TABLE', 2019

H. 50 cm, Ø 40 cm.
 Hay, Copenhagen.
 Aluminum, anodized, black and white anodized.
 Marked: Manufacturer's label.
 Included: original box and instructions.
 Image online.
€ 400 - 500

451
Edward Barber; Jay Osgerby
Armchair 'Mikado', around 2023

H. 80 x 56.5 x 59 cm.
 Vitra, Birsfelden.
 Oak, textile, blue and white bouclé fabric.
 Marked: Manufacturer's sticker with designer information.
€ 500 - 600



451

IMPRESS

MANAGEMENT

Askan Quittenbaum

Managing director and CEO,
Auctioneer
Art Nouveau and Art Deco,
Murano Glass, Jewelry
+49 89 273702-113
a.quittenbaum@quittenbaum.de

Dr. Claudia Quittenbaum

Deputy CEO
PR, Murano Glass
+49 89 273702-111
c.quittenbaum@quittenbaum.de

Arthur Floss Dipl. Betriebswirt FH

Deputy CEO
Head of department Modern Design
+49 89 273702-110
a.floss@quittenbaum.de

EXPERTS

Faridah Younès M.A.

Head of department Art Nouveau
and Art Deco
+49 89 273702-115
f.younes@quittenbaum.de

Laura Hille M.A.

Head of department Modern
and Contemporary Art
Tel. 089-273702-119
l.hille@quittenbaum.de

Massimiliano Cinque B.A.

Modern Design, Vintage accessories
Tel. 089-273702-125
m.cinque@quittenbaum.de

Nadine Becker M.A.

Head of department Studio
and Art Jewelry
Tel. 089-273702-118
n.becker@quittenbaum.de

Dr. Marcus Oertel

Head of Rhineland
Representative Office
Modern Art, Decorative Arts, Asian Art
m.oertel@quittenbaum.de

Ava Boll M.A.

Modern Design
+49 89 273702-120
a.boll@quittenbaum.de

Veit Volwahren M.A.

Modern and contemporary Art,
Modern Design
+49 89 273702-121
v.volwahren@quittenbaum.de

ACCOUNTING

Annette Ehrenhardt

Head of department Accounting
+49 89 273702-117
accounting@quittenbaum.de

LOGISTIC AND SHIPPING

Dirk Driemeyer

Head of department Logistics,
Organisation
+49 89 273702-112
d.driemeyer@quittenbaum.de

PHOTOGRAPHERS

Jochen Splett
Mirco Taliercio

CATALOGUE-ORDER

Ava Boll M.A.

+49 89 273702-120
a.boll@quittenbaum.de

M2 Logistik

+49 8121 223015
service@m2logistik.de

Mail Boxes Etc.
Völk Service GmbH
+49 89 30 666 006
mbe2545@mbe.de

DESIGN

Daniela Paringer, design & print GbR

PRINTING AND PRODUCTION

W. Kohlhammer Druckerei GmbH + Co.
KG, Stuttgart





Q U I T T E N B A U M

Kunstauktionen München

QUITTENBAUM Kunstauktionen GmbH

Theresienstrasse 60 · D-80333 Munich

Phone 089-27 37 02 10 · Fax 089-27 37 02 122

info@quittenbaum.de · www.quittenbaum.com