

# MYTHOLOGICAL BEAUTIES

Figurative Ceramics. A Private Collection.

Auction 171 C

15 November 2023





# MYTHOLOGICAL BEAUTIES

FIGURATIVE CERAMICS.  
A PRIVAT COLLECTION.

AUCTION 171 C

WEDNESDAY, 15 NOVEMBER 2023

5 P.M.

**PREVIEW:  
THERESIENSTR. 60**

Thursday	9.11.	10 a.m. - 6 p.m.
Friday	10.11.	10 a.m. - 6 p.m.
Saturday	11.11.	1 p.m. - 5 p.m.
Sunday	12.11.	1 p.m. - 5 p.m.
Monday	13.11.	10 a.m. - 6 p.m.

**QUITTENBAUM  
Kunstauktionen GmbH**

Managong Director: Askan Quittenbaum  
Theresienstrasse 60 · D-80333 Munich  
Phone (+49) 89-27 37 02 10  
Fax (+49) 89-27 37 02 122  
E-Mail info@quittenbaum.de  
Opening time: Tues-Fri 3 p.m.-6 p.m.  
and by appointment



Mitglied der Initiative  
Datenbank  
kritischer Werke

||| BDK

Bundesverband Deutscher Kunstversteigerer e.V.





474



475



476



477

474

**Mathilde Jaksch  
'Fire', c. 1925**

H. 16.6 cm. Executed by Viennese Porcelain Manufactory Augarten. Porcelain, white, glazed, polychrome overglaze with gold. Base signed: MJ (embossed). Marked: Manufactory mark (blue, underglaze), mark of the painter shop (red, overglaze), 1561 (embossed), 64 (violet, handwritten). Restored.  
€ 400 - 500

475

**Mathilde Jaksch  
'Water', c. 1925**

H. 17 cm. Executed by Viennese Porcelain Manufactory Augarten. Porcelain, white, glazed, polychrome overglaze with gold. Marked: Manufactory mark (blue, underglaze), mark of the painter shop (red, overglaze), 1560 8 (embossed). Right calf with fire crack.  
€ 400 - 500

476

**Mathilde Jaksch  
'Earth', c. 1925**

H. 17 cm. Executed by Viennese Porcelain Manufactory Augarten. Porcelain, white, glazed, polychrome overglaze with gold. Base signed: MJ (embossed). Marked: Manufactory mark (blue, underglaze), mark of the painter shop (red, overglaze), 1563 1 (stamped).  
€ 400 - 500

477

**Mathilde Jaksch  
'Air', c. 1925**

H. 16.7 cm. Executed by Viennese Porcelain Manufactory Augarten. Porcelain, white, glazed, polychrome overglaze with gold. Base signed: MJ (embossed). Marked: Manufactory mark (blue, underglaze), mark of the painter shop (red, overglaze), 1562 S (embossed), 69 (gray, handwritten). Restored.  
€ 300 - 400

478

**Mathilde Jaksch  
'Mazurka', c. 1925**

H. 15.5 cm. Executed by Viennese Porcelain Manufactory Augarten. Porcelain, white, glazed, polychrome overglaze with gold. Base signed: MJ (embossed). Marked: Manufactory mark (blue, underglaze), mark of the painter shop (red, overglaze), 1659 A (embossed).  
€ 600 - 800

479

**Mathilde Jaksch  
'Folk Song', c. 1928**

H. 10.5 cm. Executed by Viennese Porcelain Manufactory Augarten. Porcelain, white, glazed, polychrome overglaze. Marked: MJ (embossed), manufactory mark (blue, underglaze), mark of the painter shop (red, overglaze), 1644 (embossed), 64 (brown, handwritten).  
Image online.  
€ 200 - 300

480

**Mathilde Jaksch  
'Phantom' (Tilly Losch), c. 1930**

H. 19.4 cm. Executed by Viennese Porcelain Manufactory Augarten. Porcelain, white, glazed, polychrome overglaze with gold. Base marked: Phantom Tilly Losch (gold). Marked: Manufactory mark (blue, underglaze), mark of the painter shop (red, overglaze), 1607 1 (embossed), 69 (brown, handwritten).  
Image online.  
€ 350 - 450

481

**Ida Schwetz-Lehmann  
'The First Roses', c. 1930**

H. 21.8 cm. Executed by Viennese Porcelain Manufactory Augarten. Porcelain, white, glazed, polychrome overglaze. Marked: Manufactory mark (blue, under glaze), Augarten Austria (red glaze stamp), 3 (embossed), 18 (red, handwritten).  
Image online.  
€ 250 - 350

482

**Ida Schwetz-Lehmann  
'Rose Miracle', c. 1930**

H. 20.8 cm. Executed by Viennese Porcelain Manufactory Augarten. Porcelain, white, glazed, polychrome overglaze. Marked: Manufactory mark (blue, underglaze), mark of the painter shop (red, overglaze), 1564 (embossed).  
€ 500 - 800



478



482



483



484

486

**Karl Himmelstoss  
'Child in an armchair', 1908**

In Swedish costume. H. 24 cm. Executed by KPM Berlin, 1908. Porcelain, white, glazed, polychrome overglaze. Armchair signed: HIMMELSTOSS 08 (embossed). Marked: scepter (blue, underglaze), orb (red, overglaze), date letter H, 8969, additional sign (embossed), 140/139, additional sign (black, handwritten).

€ 400 - 500



486



487

487

**Hermann Hubatsch  
'Figure sitting on chair', 1908**

H. 19.5 cm. Executed by KPM Berlin, 1908. Porcelain, white, glazed, polychrome overglaze with gold and blue enamel drops. Underside of the chair signed: HUBATSCH 08 (embossed). Marked: scepter (blue, underglaze), orb (red, on glaze), date letter H, 8936, additional sign (embossed), 140/140 (black, handwritten).

Bröhan Museum Berlin, Porzellan, Vol. 1, Berlin 1993, p. 174 (from the pattern book).

€ 900 - 1.200

488

**Hermann Hubatsch  
'Agnes Sorma as Minna von Barnhelm', 1908**

H. 27 cm. Executed by KPM Berlin, 1908. Porcelain, white, glazed, underglaze predominantly in light beige tones. Marked: scepter (blue, underglaze, one stroke), date letter H, P (embossed), 8766 (incised).

Bröhan Museum Berlin, Berliner Porzellan vom Jugendstil zum Funktionalismus, Berlin 1997, p. 141; Bröhan Museum Berlin, Porzellan, Vol. 1, Berlin 1993, p. 174 (from the pattern book).

€ 1.200 - 1.600

489

**Carl Reschke  
'Seated lady in crinoline', 1909**

H. 24 cm. Executed by KPM Berlin, presumably 1910. Porcelain, white, glazed, overglaze, predominantly pink with gold. Marked: scepter (blue, underglaze), orb (red, overglaze), 9330, date letter K (pres.), additional sign (embossed), 140/304, C. (black, handwritten).

€ 800 - 1.000



489

483

**KPM Berlin  
'Diana', c. 1780**

H. 33 cm. Executed in 1914. Porcelain, white, glazed, polychrome overglaze with gold. Marked: scepter (blue, underglaze), orb (red, overglaze), 349, date letter O, Y (embossed), 140/704 50.. (black, handwritten, probably the painter Liebenau).

Fire crack.

€ 900 - 1.200

484

**Hermann Hubatsch  
'Man and Woman from the Biedermeier period', 1908**

H. 30 cm. Executed by KPM Berlin, 1908. Porcelain, white, glazed, polychrome overglaze. Marked: scepter (blue, underglaze), orb (red, overglaze), HUBATSCH 08, 8837, date letter H, additional sign (embossed).

Bröhan Museum Berlin, Porzellan, Vol. 1, Berlin 1993, p. 174 (from the pattern book).

€ 800 - 1.000

485

**Hermann Hubatsch  
'Agnes Sorma as Minna von Barnhelm', 1908**

H. 26 cm. Executed by KPM Berlin, presumably 1908. Porcelain, white, glazed, underglaze predominantly in beige tones. Marked: scepter (blue, underglaze), 8766 (incised), date letter (pres. H), additional sign (embossed), 300/165 (black, handwritten).

Bröhan Museum Berlin, Berliner Porzellan vom Jugendstil zum Funktionalismus, Berlin 1997, p. 141; Bröhan Museum Berlin, Porzellan, Vol. 1, Berlin 1993, p. 174 (from the pattern book).

€ 1.500 - 1.800



485



488



490



491



492



493



496

**490**

**Hermann Hubatsch  
'Cabarett singer', 1909**

H. 34.5 cm. Executed by KPM Berlin, 1913. Porcelain, white, glazed, polychrome underglaze. Skirt hem signed on the bottom: H. HUBATSCH 09 (embossed), scepter, orb, anniversary mark 1763-1913 (blue, underglaze), M 15, H (embossed), 9362 (incised), 140/380 (black, handwritten).

Restored.

Treskow, Die Jugendstil-Porzellane der KPM Berlin, Munich 1971, p. 202, no. 168.

€ 700 - 900

**491**

**Julius Feldtmann  
'Judith', 1911**

H. 19.5 cm. Executed by KPM Berlin, in 1914. Porcelain, white, glazed, polychrome overglaze with gold. Base signed and dated: FELDMANN (!) 1911. Marked: scepter (blue, underglaze), orb (red, overglaze), Iron Cross (black, overglaze), date letter O, M (embossed), 140/650 50.. (black, handwritten, probably painter Liebenau).

€ 600 - 800

**492**

**Georg Grasegger  
'Maid and Servant', 1914**

H. 34.5 cm. Executed by KPM Berlin, 1914-18. Porcelain, white, glazed, polychrome underglaze. Base signed: GRASEGGER 1914 (embossed). Marked: scepter (blue, underglaze), orb (red, underglaze), Iron Cross (black, overglaze), 10476, Pi ( ) (embossed), 140/883, additional mark (gray, handwritten).

€ 550 - 650

**493**

**Georg Grasegger  
'Maid and Servant', 1914**

H. 34 cm. Executed by KPM Berlin, 1915. Porcelain, white, glazed, polychrome overglaze. Base signed: GRASEGGER. Marked: scepter (blue, underglaze), orb (red, overglaze), Iron Cross (black, overglaze), Pr, date letter P, 10477 (embossed), 140/883, additional symbol (violet, handwritten).

Variant.

€ 500 - 600

**494**

**Georg Grasegger  
'Maid and Servant', 1914**

H. 35 cm. Executed by KPM Berlin, 1914. Porcelain, white, glazed, polychrome underglaze. Base signed: GRASEGGER 1914 (embossed). Marked: scepter, orb (blue, underglaze), shape symbol, date letter O, 10476 (embossed).

Lower hands restored.

Image online.

€ 350 - 450

**495**

**Paul Scheurich  
'Resting', 1918**

H. 23 x 40 x 17 cm. Executed by StPM Berlin, in 1954. Porcelain, white, glazed. Base marked: Scheurich (in frame). Marked: scepter (blue, under glaze), 9, SE, date letter for 1954 (embossed).

Image online.

€ 300 - 400

**496**

**Hermann Hubatsch  
'Galant Lady', 1920**

H. 22.5 cm. Executed by StPM Berlin, 1922. Porcelain, white, glazed, polychrome overglaze with gold. Base signed: HUBATSCH (embossed). Marked: scepter (blue, underglaze), orb (red, overglaze), 11314 M, date letter W (embossed), 140/1012 50.. (black, handwritten).

Last digit of the model number covered by the orb.

€ 600 - 700

**497**

**Karl Ens, Volkstedt**

Dancer, 1920s

H. 38.8 cm. Porcelain, white, glazed, polychrome underglaze with gold. Marked: Ens-Porzellan Volkstedt, manufactory mark, hand-painted (green glaze stamp), 1898 (black, handwritten), 4954 10 (incised).

Fingers of the left hand restored.

Image online.

€ 100 - 150

**498**

**Porcelain factory Fraureuth  
'Masked Ball Scene', 1919-26**

H. 26.5 cm. Porcelain, white, glazed, polychrome overglaze with gold. Marked: manufacturer's mark (green, underglaze), 23/364 21 (black, handwritten), indistinct embossing.

Image online.

€ 350 - 450

**499**

**Prof. Ludwig Augmüller  
'Rococo Lady', 1919-26**

H. 28 cm. Executed by Porzellanfabrik Fraureuth. Porcelain, white, glazed, polychrome overglaze with gold. Base signed: AUGMÜLLER (embossed). Marked: manufacturer's mark (green, underglaze), 1210 2 (embossed), 21/761 2 (black, handwritten).

Image online.

€ 250 - 350

**500**

**Paul Berwinsky Sr. and Jun.  
'1500', 1919-26**

Lady in costume around 1500. H. 26 cm. Executed by Porzellanfabrik Fraureuth.

Porcelain, white, glazed, polychrome overglaze with gold. Base marked: 1500. EW (own workshop). Marked: manufacturer's mark (green, underglaze), 22/259 12 (black, handwritten), 6 (embossed).

From the 'Six Centuries of Fashion' series, conceived in the manufacture's own workshop (EW) under the direction of father and son Paul Berwinsky.

Image online.

€ 250 - 350

**501**

**Jaeger  
'Mother and Child', 1919-26**

H. 20.5 cm. Executed by Porzellanfabrik Fraureuth. Porcelain, white, glazed, polychrome underglaze. Base signed: Jaeger (embossed). Base marked: manufactory mark (green, underglaze), B (embossed).

Image online.

€ 300 - 400

**502**

**Heubach, Lichte  
'Seated lady with a bouquet of flowers', c. 1915**

H. 21 cm. Porcelain, white, glazed, polychrome underglaze. Marked: Manufactory mark (green, underglaze), original golden paper label, inscribed.

Image online.

€ 350 - 450

**503**

**Andrea Nielsen  
'Silver Pheasant', 1917**

H. 18.7 cm. Executed by Royal Copenhagen, 1961. Porcelain, white, glazed, polychrome underglaze. Base signed: AN (incised). Marked: ROYAL COPENHAGEN DENMARK 1881 (green, underglaze), waves qm (blue, under glaze), 1881 P (...) (embossed); distributor's label.

Image online.

€ 20 - 40



504

**504**  
**Johann Joachim Kaendler**  
**'Cavalier at the desk', 1740**

H. 14 cm. Executed by KPM Meissen, before 1924. Porcelain, white, glazed, polychrome overglaze with gold. Marked: button swords (blue, underglaze), 174 (incised), 102 (embossed), 12 (red, handwritten). Retouches and losses.

Walcha, Meißner Porzellan, Dresden 1973, no. 136.

€ 400 - 600

**505**

**Johann Joachim Kaendler**  
**'Ganymede', 1744**

H. 28.2 cm. Executed by KPM Meissen, before 1925. Porcelain, white, glazed, polychrome overglaze with gold. Marked: button swords (blue, underglaze, one stroke), 530 (incised), 101 (embossed), 47 (handwritten). Retouches.

€ 600 - 800

**506**

**Michel Victor Acier**  
**'Water', 1772**

H. 22.5 cm. Executed by KPM Meissen, before 1924. Porcelain, white, glazed, polychrome overglaze with gold. Marked: button swords (blue, under glaze), D 81 (incised), 93 (embossed), 13 (blue, handwritten).

Restored, with losses.

Berling, Meissen China, reprint, New York 1972, p. 67.

€ 1.000 - 1.500



505

**507**

**Christian Gottlieb Jüchtzer**  
**'Hope', 1781/82**

H. 36 cm. Executed by KPM Meissen, before 1924. Porcelain, white, glazed, polychrome overglaze with gold. Marked: button swords (blue, under glaze), S 86 (incised), 36 (embossed), 58 (black, handwritten, 2x), remains of a paper label. Restored.

€ 1.500 - 2.000

**508**

**Carl August Starcke**  
**'Loyalty', 1782-84**

H. 25.5 cm. Executed by KPM Meissen, before 1925. Porcelain, white, glazed, polychrome overglaze with gold. Marked: button swords (blue, underglaze), H 52 (incised), 48 (embossed), 56 (handwritten).

€ 900 - 1.200

**509**

**Johann Carl Schönheit**  
**'Venus with Dolphin', 1784**

H. 25 cm. Executed by KPM Meissen, before 1924. Porcelain, white, glazed, polychrome overglaze with gold. Marked: button swords (blue, underglaze), H. 43 (incised), 101 (embossed), 15 (black, handwritten).

€ 950 - 1.200

**510**

**Johann Carl Schönheit**  
**'Venus with Dolphin', 1784**

H. 26 cm. Executed by KPM Meissen, before 1924. Porcelain, white, glazed, polychrome overglaze with gold. Marked: button swords (blue, underglaze), H. 43 (incised), 125 (embossed).

Dolphin's tail with small retouches.

€ 700 - 900

**511**

**Christian Gottfried Jüchtzer**  
**'Bacchante with Tamburin', 1785**

H. 26.5 cm. Executed by KPM Meissen, before 1925. Porcelain, white, glazed, polychrome overglaze with gold. Marked: button swords (blue, underglaze), H-47 (incised), 107 (embossed), 58 (handwritten).

€ 800 - 1.000



508



509



506



507



510



511



512

**512**  
**Christian Gottfried Jüchtzer**  
**'Sleep', 1786**

H. 37.5 cm. Executed by KPM Meissen, before 1924. Porcelain, white, glazed, polychrome overglaze with gold. Marked: button swords (blue, under glaze), 1 13 (incised), 141 (embossed), L (blue, handwritten). Fire crack. Restorations and retouches, losses in the foliage. Berling, Meissen China, reprint, New York 1972, p. 74.  
**€ 1.400 - 2.000**

**513**  
**Christian Gottfried Jüchtzer**  
**'Antinous', 1787**

H. 26 cm. Executed by KPM Meissen, before 1924. Porcelain, white, glazed, polychrome overglaze with gold. Marked: swords (blue, underglaze), H 49 (incised), 39 (embossed), 44 (violet, handwritten). Restored.  
**€ 600 - 800**

**514**  
**Hermann Hultsch**  
**'Psyche with Cerberus', 1882-85**

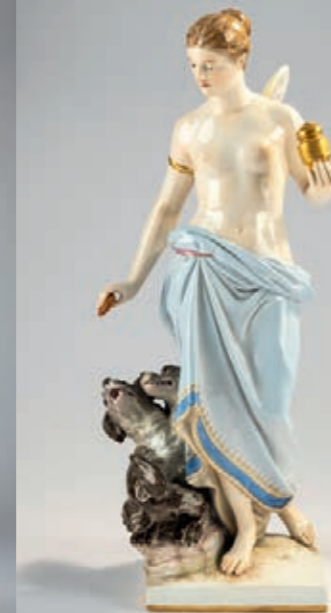
H. 37 cm. Executed by KPM Meissen, before 1924. Porcelain, white, glazed, polychrome overglaze with gold. Base signed: H. Hultsch (embossed). Marked: button swords (blue, under glaze), M 146 (incised), 88 (embossed), 36 (brown, handwritten). Retouches.  
**€ 1.000 - 1.500**

**515**  
**Hermann Hultsch**  
**'Cupid with arrow and dove', 1882-85**

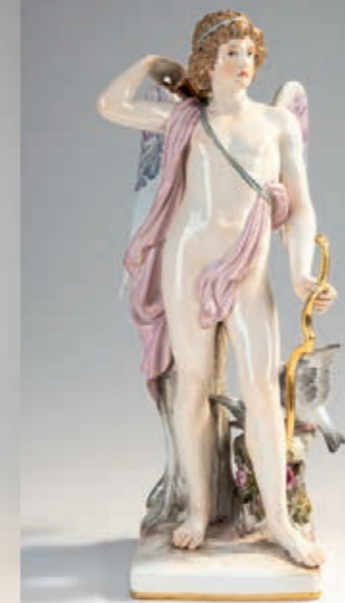
H. 36 cm. Execution: KPM Meissen, before 1924. Porcelain, white, glazed, polychrome overglaze with gold. Marked: button swords (blue, under glaze), M 180 (incised), 48 (embossed), 36 (gold, handwritten). Bow restored.  
**€ 800 - 1.200**



513



514



515



516

**516**  
**Robert Ockelmann**  
**'After the Bath', 1893**

H. 36 cm. Executed by KPM Meissen, before 1924. Porcelain, white, glazed, polychrome overglaze with gold. Marked: button swords (blue, under glaze), M 193 B (incised), 131 (embossed), 1 (orange, handwritten). Restored.  
**€ 1.000 - 2.000**



518

**517**  
**Max Rosmann**  
**'Rape of Youth', 1889**

H. 48.5 cm. Executed by KPM Meissen, before 1924. Porcelain, white, glazed, polychrome overglaze with gold. Marked: button swords (blue, under glaze), 0144 34 (embossed), 48 (gray, handwritten). After a sculpture by Pietro Balestra (circa 1672 - 1729, Siena). Retouches.  
**€ 2.500 - 3.500**

**518**  
**Paul Helmig**  
**'Air', 1892**

H. 22 cm. Executed by KPM Meissen, before 1924. Porcelain, white, glazed, polychrome overglaze with gold. Marked: button swords (blue, under glaze), O 199 (incised), 132 (embossed), 6 (green, handwritten). Few retouches, fingers of the lying putto's left hand glued.  
**€ 1.500 - 2.500**

**519**  
**Emmerich Andresen**  
**'Dawn', 1893**

H. 41 cm. Executed by KPM Meissen, before 1924. Porcelain, white, glazed, polychrome overglaze with gold. Marked: button swords (blue, under glaze, one stroke), P 105 (incised), 50 (embossed), 56 (red, handwritten). Restored. Leaf chipped.  
**€ 2.000 - 3.000**



517



519



520

**520**  
**Rudolph Schirmer**  
**'Lady with Umbrella', 1896**

H. 24.5 cm. Executed by KPM Meissen, before 1924. Porcelain, white, glazed, polychrome overglaze with gold. Marked: button swords (blue, under glaze), Q 125 (incised), 143 (embossed), 33 (gold, handwritten).

Restored.  
€ 500 - 800



521

**521**  
**Emmerich Andresen**  
**'Lady plucking Lilies', 1897**

H. 21 cm. Executed by KPM Meissen, before 1924. Porcelain, white, glazed, polychrome overglaze with gold. Marked: button swords (blue, under glaze), Q 154 (incised), 147 (embossed).

Restored.  
€ 500 - 700



523

**522**  
**Paul Richter**  
**'Nixenfang', 1898**

H. 14.3 cm, 45 x 21 cm. Executed by KPM Meissen, before 1924. Porcelain, white, glazed, polychrome overglaze. Marked: button swords (blue, under glaze, one stroke), A 119 (incised, indistinct), 124 (embossed).

Restored.  
€ 1.000 - 2.000

**523**  
**Paul Helmig**  
**'Seller of Cupids', 1898**

H. 24 cm. Executed by KPM Meissen, before 1924. Porcelain, white, glazed, polychrome overglaze with gold. Marked: button swords (blue, under glaze), Q 184 (incised), 41 (brown, handwritten).

Berling, Meissen China, reprint, New York 1972, pl. 31.  
€ 1.400 - 2.400



522

**524**  
**Arthur Lange**  
**'Night', 1901**

H. 44 cm. Executed by KPM Meissen, before 1924. Porcelain, white, glazed, polychrome overglaze with gold. Marked: button swords (blue, under glaze, one stroke), T 158 (incised), 101 (embossed), 9 (blue, handwritten).

Restored.  
€ 6.000 - 8.000

**525**  
**Jean-Etienne Liotard (AFTER)**  
**'Viennese Chocolate Girl', 1901-04**

H. 18.5 cm. Executed by KPM Meissen, before 1924. Porcelain, white glazed, polychrome overglaze with gold. Marked: button swords (blue, under glaze), T 5 (incised), 36 (embossed), 4 (gray, handwritten).

Berling, Meissen China, reprint, New York 1972, pl. 29.  
€ 900 - 1.200



525



524



526

**Theodor Eichler  
'Girl with a Basket of Apples', 1904**

H. 27 cm. Executed by StPM Meissen, 1934-46. Porcelain, white, glazed, polychrome overglaze and underglaze. Marked: swords (blue, under glaze), U 137 (incised), 127 (embossed), 10 (brown, handwritten).

Restored.  
Image online.  
€ 300 - 400



527

527

**Alfred König  
'Girl with Child', 1905**

H. 12.3 cm. Executed by KPM Meissen, before 1924. Porcelain, white, glazed, polychrome overglaze. Marked: button swords (blue, under glaze), W 114 (incised), 128 (embossed), 68 (red, handwritten).

Restored.  
€ 400 - 600

528

**Theodor Eichler  
'Three girls playing blind man's bluff', 1905**

H. 26 cm. Executed by KPM Meissen, before 1924. Porcelain, white, glazed, polychrome overglaze. Marked: button swords (blue, under glaze), W 115 (incised), 83 (embossed).

Restored.  
Berling, Meissen China, reprint, New York 1972, color plate 35.  
€ 1.500 - 2.500

529

**Theodor Eichler  
'Girl with Straw Hat', 1905-10**

H. 20.7 cm. Executed by KPM Meissen, before 1924. Porcelain, white, glazed, polychrome overglaze and underglaze. Marked: button swords (blue, under glaze), W 125 (incised), 59 (embossed), 9 (green, handwritten).

Restored.  
€ 400 - 600

530

**Alfred König  
'Boy with Apple and Basket', 1905-10**

H. 13.7 cm. Executed by KPM Meissen, before 1924. Porcelain, white, glazed, polychrome overglaze. Marked: button swords (blue, under glaze), X 187 (incised), 107 (embossed), 12 (brown, handwritten).

Restored.  
Image online.  
€ 350 - 450

531

**Alfred König  
'Girl fending off Snowballs', 1905-10**

H. 12.8 cm. Executed by StPM Meissen, 1934-46. Porcelain, white, glazed, polychrome overglaze. Marked: Swords (blue, under glaze), W 132 (incised), 145 (embossed).

Restored.  
Image online.  
€ 350 - 450



529



528

532

**Theodor Eichler  
'Girl with Straw Hat', 1905-10**

H. 20.7 cm. Executed by KPM Meissen, before 1924. Porcelain, white, glazed, polychrome overglaze and underglaze. Marked on the bottom: button swords (blue, under glaze), W 125 (incised), 132 (embossed), 17 (black, handwritten).

€ 600 - 800



532



534

533

**Erich Hoesel  
'Goat with Basket', 1905-10**

H. 14.2 cm. Executed by KPM Meissen, before 1924. Porcelain, white, glazed, polychrome overglaze. Marked: button swords (blue, under glaze), V 119 (incised), 124 (embossed), 52 (gray, handwritten).

Restored.  
Image online.  
€ 150 - 250

534

**Joseph Cormier alias Joé Descomps  
'Girl Nude', 1909-11**

H. 31 cm. Executed by KPM Meissen, before 1924. Porcelain, white, glazed, polychrome overglaze with gold. Marked: button swords (blue, underglaze), A 296 (incised), 51 (embossed), 36 (brown, handwritten).

Head/shoulders and toecaps restored.  
€ 800 - 1.000

535

**Alfred König  
'Two Girls', 1911**

H. 19 cm. Executed by StPM Meissen, 1934-46. Porcelain, white, glazed, polychrome overglaze with gold. Marked: Swords (blue, under glaze, two strokes), B 290 (incised), 149 (embossed), IIII (blue, handwritten).

Fire crack, retouches.  
€ 500 - 600



535



536

536

**Alfred König  
'Lady with a Fan', 1911-12**

H. 29 cm. Executed by KPM Meissen, before 1924. Porcelain, white, glazed, polychrome overglaze with gold. Marked: button swords (blue, under glaze), B 251 (incised), 76 (embossed), original paper sales label Brünn/Brno.

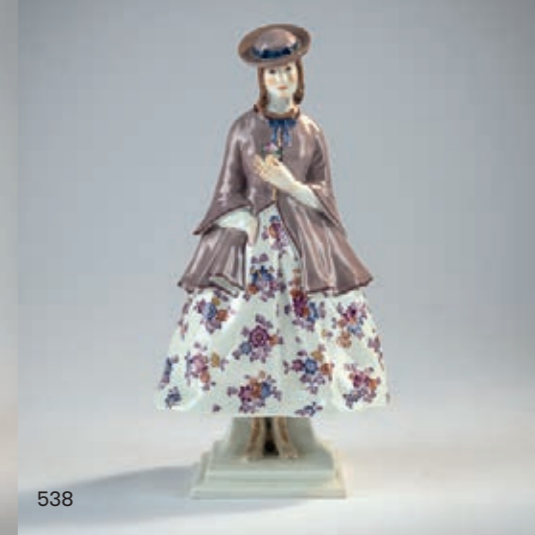
€ 1.800 - 2.800

537

**Paul Helmig  
'Juno with Peacock', 1912**

H. 38.5 cm. Executed by KPM Meissen, before 1924. Porcelain, white, glazed, polychrome overglaze with gold. Marked: button swords (blue, under glaze), 1235. (incised), 137 (embossed).

€ 1.500 - 2.500



538



537

538

**Richard Langer  
'Lady donning a rose', 1914**

H. 26.5 cm. Executed by StPM Meissen, 1934-46. Porcelain, white, glazed, polychrome overglaze with gold. Marked: Swords (blue, under glaze), E 233 (incised), 86 (embossed), 9 (blue, handwritten).

Restored.  
€ 400 - 500



539



540

**539**  
**Josef Wackerle**  
**'Lady sitting in an Armchair', 1906**

H. 23.2 x 30 x 19.5 cm. Executed by KPM Nymphenburg. Porcelain, white, glazed, polychrome underglaze. Base signed: Wackerle. Marked: 164 (incised).

Ziffer, Nymphenburger Moderne, Munich 1997, no. 290.

€ 700 - 900

**540**  
**Ferdinand Liebermann**  
**'Io', 1910**

H. 16 x 28.5 x 13.5 cm. Executed by Rosenthal, Selb, c. 1910. Porcelain, white, glazed, polychrome underglaze. Natural base signed: FLieberm(...) (incised). Marked: Manufactory mark (green, under glaze).

€ 400 - 500

**541**  
**Rudolf Marcuse**  
**'In the Wind', 1913**

H. 28 cm. Executed by Rosenthal, Selb, c. 1914. Porcelain, white, glazed, polychrome underglaze. Base signed: RUDOLF MARCUSE (brown). Marked: manufacturer's mark (green, underglaze), K 293 (embossed), M (green, handwritten).

Struss, Rosenthal, Augsburg 1995, p. 54.

€ 500 - 600

**542**  
**Rudolf Marcuse**  
**'Before the Bath', 1913**

H. 26.5 cm. Executed by Rosenthal, Selb, c. 1914. Porcelain, white, glazed, polychrome underglaze. Base signed: RUDOLF MARCUSE (brown). Marked: manufacturer's mark (green, underglaze), K. 316 (embossed).

Bröhan Museum Berlin, Porzellan, Volume 2, Berlin 1996, p. 281, no. 251.

€ 500 - 600



541



542

**543**  
**Rudolf Marcuse**  
**'At the Beach', 1913**

H. 38 cm. Executed by Rosenthal, Selb, c. 1914. Porcelain, white, glazed, polychrome underglaze. Base signed: RUDOLF MARCUSE (pink). Marked: manufacturer's mark (green, underglaze), K 294 (embossed).

€ 500 - 600

**544**  
**Richard Aigner**  
**'Love Spring', 1913**

H. 25.5 cm. Executed by Rosenthal, Selb, 1927. Porcelain, white, glazed, polychrome underglaze. Base signed: RICHARD AIGNER MUNICH. Marked: manufacturer's mark (green, underglaze), K. 295/1 (embossed), M, additional signet (handwritten).

Struss, Rosenthal, Augsburg 1995, p. 50.

Image online.

€ 350 - 450

**545**  
**Dorothea Charol**  
**'Anita', 1925**

H. 25.5 cm. Executed by Rosenthal, Branch factory Selb, c. 1925. Porcelain, white, glazed, polychrome underglaze. Marked: Manufactory mark (green, underglaze), D.CHAROL 201 (embossed).

Image online.

€ 250 - 350

**546**  
**Wilhelm von Heider**  
**'After the Bath', 1926**

H. 39 cm. Executed by Rosenthal, Selb Branch factory, probably in 1926. Porcelain, white, glazed, polychrome underglaze. Marked: Manufactory mark (green, under glaze), WvHEIDER, 220 (embossed).

€ 400 - 600

**547**  
**Gustav Oppel**  
**'Dreamer', 1930**

H. 22 cm. Executed by Rosenthal, Selb, 1931. Porcelain, white, glazed, polychrome overglaze. Base signed: GO. Marked: manufacturer's mark (green, under glaze), 1116, 1 (embossed), Geigenmiller (gold, handwritten).

Image online.

€ 300 - 400



543



546

**548**  
**Gerhard Schliepstein**  
**'Bather', c. 1932**

H. 22 x 23 x 15 cm. Executed by Rosenthal, Branch factory, Selb, probably 1943-48. Porcelain, white, glazed. Marked: Manufactory mark (green, under glaze), G. SCHLIEPSTEIN 715 (embossed).

Image online.

€ 150 - 250

**549**  
**Gerhard Schliepstein**  
**Water scoop, c. 1932**

H. 23 cm. Executed by Rosenthal, Plößberg branch, after 1953. Porcelain, white, glazed, polychrome overglaze. Marked: Manufactory mark (green, under glaze), G. SCHLIEPSTEIN 828 (embossed), handgemalt Troppmann (green, over glaze).

Image online.

€ 100 - 200

**550**  
**Lore Friedrich-Gronau**  
**'Gypsy Dance' (Liselotte Köster), 1941**

H. 36.6 cm. Executed by Rosenthal, Selb, in 1948. Porcelain, white, glazed, polychrome overglaze. Base signed: LFG (embossed). Marked: manufacturer's mark (green, underglaze), 1746 (embossed), handgemalt Worms (blue, overglaze).

Image online.

€ 300 - 400

**551**  
**Lore Friedrich-Gronau**  
**'Graziosa', 1948**

H. 30 cm. Executed by Rosenthal, Selb, after 1948. Porcelain, white, glazed, polychrome overglaze. Marked: Manufactory mark (green, underglaze), LF-GRONAU, 1785 (embossed), 7011 handgemalt R (green, handwritten).

Image online.

€ 300 - 400

**552**  
**Karl Himmelstoss**  
**'Clarinet Player', 1956**

H. 21 cm. Executed by Rosenthal, Selb. Porcelain, white, glazed. Base signed: K. HIMMELSTOSS (incised). Marked: manufacturer's mark (green, under glaze).

Image online.

€ 20 - 30



555

554

**Duxer Porzellan-Manufaktur AG, form. Eduard Eichler**  
**Spanish dancer, c. 1930**

H. 21.2 cm. Earthenware, polychrome glaze. Marked: ROYAL DUX Germany (green glaze stamp), 130, 29 F (embossed).

Image online.

€ 50 - 80

555

**France**  
**Relief 'Lady with a parasol', c. 1900**

88.5 x 55 cm (with frame). Faïence, glazed in dark colors imitating bronze. Mahogany frame with gilded metal decoration. Small chip on the side of the parasol.

€ 800 - 1.000

556

**Michael Powolny**  
**'Helen of Troy', c. 1907**

H. 39 cm. Executed probably by Gmundner ceramics, c. 1919. Earthenware, glazed white and yellow with golden spots. Unsigned.

Stand/base restored, which probably also covered the signet.

Frottier, Michael Powolny, Vienna 1990, cat. rais. 60.

€ 400 - 600

557

**Johanna Meier-Michel**  
**Crinoline 'Spring', c. 1908**

H. 29.5 cm. Executed by Gmundner ceramics. Earthenware, polychrome glaze. Marked: Signet of the Gmundner ceramics, 22 (embossed).

Glued flat chip above the bottom.

Image online.

€ 100 - 150

558

**Claire Herczeg-Weiss**  
**'Unmasking', 1936/37**

36.5 cm. Executed by Goldscheider Everlast Corp., Trenton, USA, 1942-1952. Earthenware, polychrome glaze. Marked: Manufactory marks G USA FINE CHINA, GOLDSCHIEDER EVERLAST CORP (black glaze stamps).

Dechant/Goldscheider, Goldscheider, Stuttgart 2007, p. 468.

€ 800 - 1.500

559

**Walter Goldscheider**  
**'Dancer, c. 1940**

H. 35.5 cm. Executed by Goldscheider Pottery, Trenton, USA. Earthenware, polychrome glaze. Base signed: © AGA. Inscribed: © AMERICAN GOLDSCHIEDER CORP, CREATED BY Goldscheider G USA (black glaze stamp), 665 167 5 (embossed).

Retouched.

On the history: cf. Dechant/Goldscheider, Goldscheider, Stuttgart 2007, p. 182 ff.

€ 450 - 550

553

**Germany**

Lady in a winter costume with a dog, c. 1925

H. 47 cm. Majolica, glazed white and green.

Marked: BW in a triangle (embossed).

Image online.

€ 300 - 400



556



558



559



560



562

560

**E Tischer**  
**'Temple Dancer', c. 1928/29**

H. 53 cm. Executed by Marcell Goldscheider, Vienna. Earthenware, polychrome glaze. Marked: 380 (embossed).

Dechant/Goldscheider, Goldscheider, Stuttgart 2007, p. 547.

€ 500 - 700

561

**Marcell Goldscheider, Vienna**  
**Lamp base 'Young Lady Standing in the Wind', 1929-39**

H. 27 cm. Earthenware, polychrome glaze. Marked: helmet GOLDSCHIEDER KERAMIK AUSTRIA, 493 (embossed).

Restored.

Image online.

€ 100 - 150

562

**Max Valentin**  
**'Standing nude with cloth', 1907/08**

H. 56 cm. Executed by Friedrich Goldscheider, Vienna. Earthenware, polychrome glaze. Base marked: Valentin, 3599 29 10 (embossed). Marked: sculpture mark (embossed), eagle mark (black glaze stamp), R (black, handwritten).

Dechant/Goldscheider, Goldscheider, Stuttgart 2007, p. 373, 3599.

€ 650 - 850

563

**Albert Dominique Rose**  
**Tall figure 'Ruth', 1911/12**

H. 54 cm. Executed by Friedrich Goldscheider, Vienna. Earthenware, polychrome glaze. Base signed: Rose (embossed). Marked: numbering (faint). Marked: Goldscheider Wien (black glaze stamp), painter's mark (handwritten).

Restored.

Dechant/Goldscheider, Goldscheider, Stuttgart 2007, p. 381.

€ 1.200 - 1.600



563



564

564

**Fritz Heinemann**  
**'Dutch Woman', 1911/12**

H. 44.3 cm. Executed by Friedrich Goldscheider, Vienna. Earthenware, polychrome glaze. Base signed: Heinemann (embossed). Marked: wings (black glaze stamp), sculptor's mark (embossed), 4224 9 35 (embossed).

€ 500 - 700

565

**Max Valentin**  
**'Stepping dancer, lifting her long dress to the side', c. 1913/14**

H. 35.5 cm. Executed by Friedrich Goldscheider, Vienna. Earthenware, polychrome glaze. Base signed: Valentin (embossed). Marked: round eagle mark (black glaze stamp), sculpture mark (indistinct), 4794 40 9 (embossed), 16(...) VI (black, handwritten). Crack in the right wrist concealed with a gold clasp.

Dechant/Goldscheider, Goldscheider, Stuttgart 2007, p. 393, no. 4794.

Image online.

€ 300 - 400

566

**August Handzel (Hentschel)**  
**'Dancer in pose', 1913/14**

H. 34.3 cm. Executed by Friedrich Goldscheider, Vienna. Earthenware, polychrome glaze. Base signed: Hentschel (embossed). Marked: wings (black glaze stamp (indistinct)), sculptor's mark, 4485 9 10 (embossed) VI XI / black, handwritten).

Image online.

€ 250 - 350

567

**Hafenruckler**  
**'Egyptian Temple Dancer', 1921**

H. 47 cm. Executed by Friedrich Goldscheider, Vienna. Earthenware, polychrome glaze. Marked: Goldscheider Wien, MADE IN AUSTRIA HAND-DECORATED (black glaze stamp), 5657 2 8, 04 (embossed), IV, artist's signet (black, hand-painted).

Dechant/Goldscheider, Goldscheider, Stuttgart 2007, p. 412.

€ 800 - 1.200



567

568

**Karl Perl**  
**'Seated nude lady joking with a leopard', 1922**

With snake. H. 26 cm. Executed by Friedrich Goldscheider, Vienna. Earthenware, polychrome glaze. Base signed: K. PERL (embossed). Marked: 5025 58 2 (embossed). Marked on the bottom: Goldscheider Wien (black glaze stamp), T (black, handwritten).

Chips to the stand, abrasions.

Dechant/Goldscheider, Goldscheider, Stuttgart 2007, p. 398.

Image online.

€ 200 - 400



568

569

**Wilhelm Thomasch**  
**'Fascination', 1922**

H. 46 cm. Executed by Friedrich Goldscheider, Vienna. Earthenware, polychrome glaze. Base signed: THOMASCH (embossed). Marked: Goldscheider Wien (black glaze stamp), 5060 163 4 (embossed), S XIX (green), painter's mark (black, handwritten). Dechant/Goldscheider, Goldscheider, Stuttgart 2007, p. 398, no. 5060 (overlap).

€ 800 - 1.200



569

570

**Josef Lorenzl**  
**'Captive Bird' (Niddy Impekhoven), c. 1922**

H. 46 cm. Executed by Friedrich Goldscheider, Vienna. Earthenware, polychrome glaze. Vase signed: Lorenzl (embossed), numbering (indistinct), 5230 886 (...) (embossed). Marked: MADE IN AUSTRIA Goldscheider Wien (black glaze stamp), painter's signet (glaze stamp).

Dechant/Goldscheider, Goldscheider, Stuttgart 2007, p. 420 f.

€ 2.200 - 2.800

571

**Josef Lorenzl  
'Captive Bird' (Niddy Impekhoven), c. 1922**

H. 46 cm. Executed by Friedrich Goldscheider, Vienna. Earthenware, polychrome glaze. Vase signed: Lorenzl (embossed). Marked: MADE IN AUSTRIA Goldscheider Wien HAND-DECORATED (black glaze stamp), 5230 1976 65 (embossed), M03 (incised), painter's signet N 12 (black, handwritten).

Restored.

Dechant/Goldscheider, Goldscheider, Stuttgart 2007, p. 420 f.

€ 900 - 1.600



571

572

**Josef Lorenzl  
'Aida', 1923/24**

H. 46 cm. Executed by Friedrich Goldscheider, Vienna. Earthenware, polychrome glaze. Hem of the coat signed: Lorenzl (embossed). Marked: MADE IN AUSTRIA, Goldscheider Vienna, HAND-DECORATED (black glaze stamp), 5281 659 65, 04 (embossed), painter's mark, 4 II (handwritten).

Dechant/Goldscheider, Goldscheider, Stuttgart 2007, p. 404.

€ 750 - 1.000



572



573

573

**Josef Lorenzl  
'Oriental Dancer in Pose', c.1923**

H. 44.5 cm. Executed by Friedrich Goldscheider, Vienna. Earthenware, polychrome glaze. Base signed: Lorenzl (faint). Marked: Goldscheider Wien, MADE IN AUSTRIA (black glaze stamp), 5267 40 65 (embossed), painter's signets (black, handwritten).

Restored.

Dechant/Goldscheider, Goldscheider, Stuttgart 2007, p. 404.

€ 400 - 600

574

**Josef Lorenzl  
'Dancer in Butterfly Costume',  
1924/25**

H. 43.5 cm. Executed by Friedrich Goldscheider, Vienna. Earthenware, polychrome glaze. Vase signed: Lorenzl (embossed). Marked: MADE IN AUSTRIA, Goldscheider Wien HAND-DECORATED (black glaze stamp), 5434 383 4, 4 P (embossed), painter's signets (embossed).

Chipped on the base.

Dechant/Goldscheider, Goldscheider, Stuttgart 2007, p. 407.

€ 800 - 1.200



574



**575**  
**Paul Philippe**  
**Tall 'Dancer in Peacock Costume',**  
**1924/25**

H. 50 cm. Executed by Friedrich Goldscheider, Vienna. Earthenware, polychrome glaze. Base signed: Philipp (!) (embossed), numbering (faint). Marked: MADE IN AUSTRIA, remains of a manufacturer's label (probably covering the mark), painter's signet (handwritten).

Small glued chip to the fan.

Dechant/Goldscheider, Goldscheider, Stuttgart 2007, p. 407.

€ 3.000 - 5.000

575



576

**576**  
**Josef Lorenzl**  
**Lamp base 'Seated Spaniard with**  
**Hat', 1925/26**

H. 38.8 cm. Executed by Friedrich Goldscheider, Vienna. Earthenware, polychrome glaze. Base signed: Lorenzl (embossed, indistinct). Marked: Goldscheider Wien, MADE IN AUSTRIA HAND-DECORATED (black glaze stamp), 5548 45 12, 5M (embossed), Dechant/Goldscheider, Goldscheider, Stuttgart 2007, p. 410, no. 5548.

€ 650 - 850

**577**  
**Josef Lorenzl**  
**'Haremstanz' table light, c. 1925**

H. 81 cm, 56 x 43.5 cm (total). Executed by Friedrich Goldscheider, Vienna. Earthenware, polychrome glaze. Marked: MADE IN AUSTRIA, Goldscheider Vienna, HAND-DECORATED (black glaze stamp), 5500 160 7, O3 (embossed), F, K 7 p (black, handwritten). Brass mounting, porcelain switch, dark blue fabric shade.

Hairline crack in the left shoulder.

Cf. Dechant/Goldscheider, Goldscheider, Stuttgart 2007, p. 408.

€ 1.300 - 2.300



577



578



579



581



582

**578**

**Josef Lorenzl**  
**'Standing young lady in carnival costume', c. 1925**

H. 34 cm. Executed by Friedrich Goldscheider, Vienna. Earthenware, polychrome glaze. Pillar signed on the back: Lorenzl (embossed). Marked: Goldscheider Vienna, HAND-DECORATED MADE IN AUSTRIA HA (black glaze stamp), 5486 11 8 5 M (embossed), D 4 II (black, handwritten).  
**€ 650 - 750**

**579**

**Josef Lorenzl**  
**'Posing Vaudeville Artist', c. 1926**

H. 35.5 cm. Executed by Friedrich Goldscheider, Vienna. Earthenware, polychrome glaze. Base signed: Lorenzl (embossed). Marked: MADE IN AUSTRIA, Goldscheider Vienna, HAND-DECORATED (black glaze stamp), 5573 120 7, W 05 (embossed), painter's mark (black, handwritten). Retouches; ash particles. Dechant/Goldscheider, Goldscheider, Stuttgart 2007, p. 411.  
**€ 500 - 600**

**580**

**Stephan Dakon**  
**'Harvey', 1926/27**

H. 47 cm. Executed by Friedrich Goldscheider, Vienna. Earthenware, polychrome glaze. Vase signed: Dakon (embossed). Marked: MADE IN AUSTRIA, Goldscheider Vienna, HAND-DECORATED (black glaze stamp), 5625 45 14 (embossed), M 03 (incised), painter's mark (handwritten). Splices and fire cracks. Image online.  
**€ 350 - 450**

**581**

**Josef Lorenzl**  
**'Standing dancer with a Biedermeier hairstyle', c. 1926**

H. 35 cm. Executed by Friedrich Goldscheider, Vienna. Earthenware, polychrome glaze. Skirt hem signed: Lorenzl (embossed). Marked: Goldscheider Vienna, MADE IN AUSTRIA HAND-DECORATED (black glaze stamp), 5589 (!) 9 3 7 (embossed), L 1278 (incised), painter's signet (black, handwritten). Dechant/Goldscheider, Goldscheider, Stuttgart 2007, p. 411, no. 5580.  
**€ 400 - 500**

**582**

**Stephan Dakon**  
**'Banjo play (Zerline Balten), 1927**

H. 34 cm. Executed by Friedrich Goldscheider, Vienna. Earthenware, polychrome glaze. Pierrot signed: Dakon (embossed). Marked: MADE IN AUSTRIA Goldscheider Wien HAND-DECORATED (black glaze stamp), 5659 42 10 (embossed), painter's signets (handwritten). Restored. Dechant/Goldscheider, Goldscheider, Stuttgart 2007, p. 412.  
**€ 700 - 900**



583

**583**

**Stephan Dakon**  
**'Turtle doves', 1927/28**

H. 47 cm. Executed by Friedrich Goldscheider, Vienna. Earthenware, polychrome glaze. Marked: Goldscheider Wien, MADE IN AUSTRIA, HAND-DECORATED (black glaze stamp), 5712 546 21 (embossed). Fire cracks. Dechant/Goldscheider, Goldscheider, Stuttgart 2007, p. 413.  
**€ 2.500 - 3.500**



584



585

**584**  
**Karl Sailer**  
**Dancer in a butterfly costume,**  
**c. 1928/29**

H. 47 cm. Executed by Friedrich Goldscheider, Vienna. Earthenware, polychrome glaze. Base signed: Sailer (faint). Marked: Manufactory label Goldscheider Vienna, Sailer (embossed), painter's signets (black, handwritten). Restored. Dechant/Goldscheider, Goldscheider, Stuttgart 2007, p. 430.  
**€ 500 - 600**

**585**  
**Josef Lorenzl**  
**'Standing Dancer in Butterfly**  
**Dress', c. 1928**

H. 40 cm. Executed by Friedrich Goldscheider, Vienna. Earthenware, polychrome glaze. The hem of the dress signed: Lorenzl (embossed). Marked: MADE IN AUSTRIA HAND-DECORATED Goldscheider Wien (black glaze stamp), 5715 177 12 (embossed), IV P (scratched), painter's signet (black, handwritten). Small chips to the glaze above the bottom. Dechant/Goldscheider, Goldscheider, Stuttgart 2007, p. 413.  
**€ 600 - 800**

**586**  
**Josef Lorenzl**  
**'Pyjama', c. 1928**

H. 25.5 cm. Execution: Friedrich Goldscheider, Vienna. Earthenware, polychrome glaze. Base signed: Lorenzl (embossed). Bottom marked: MADE IN AUSTRIA Goldscheider Vienna, HAND-DECORATED (black glaze stamps), 5780 32 4, 1 (embossed), MR 2, J (handwritten). Restored. Dechant/Goldscheider, Goldscheider, Stuttgart 2007, p. 415.  
**€ 500 - 700**



586

**587**  
**Josef Lorenzl**  
**Tall 'Dancer in Butterfly Costume (Turning)', 1929**

H. 44.5 cm. Executed by Friedrich Goldscheider, Vienna. Earthenware, polychrome glaze. Base signed: Lorenzl (embossed). Marked: Goldscheider Wien MADE IN AUSTRIA HAND-DECORATED (black glaze stamp), 5900 184 4 (embossed), painter's mark (handwritten). Dechant/Goldscheider, Goldscheider, Stuttgart 2007, p. 419.  
**€ 900 - 1.200**

**588**  
**Stephan Dakon**  
**'Mary', 1929**

H. 35.5 cm. Executed by Friedrich Goldscheider, Vienna. Earthenware, polychrome glaze. Base signed: Dakon (faint). Marked: Goldscheider Wien MADE IN AUSTRIA HAND-DECORATED (black glaze stamp), 6150 24 10, 20 (embossed). Glaze flaws. Dechant/Goldscheider, Goldscheider, Stuttgart 2007, p. 425.  
**€ 600 - 800**



587



588





589

**589**  
**Stephan Dakon**  
**'Autogirl', 1929**

H. 38 cm. Executed by Friedrich Goldscheider, Vienna. Earthenware, polychrome glaze. Base signed: Dakon (embossed). Marked: MADE IN AUSTRIA HAND-DECORATED Goldscheider, Vienna (black glaze stamp), 5938 78 4, P 5 (embossed), painter's mark (handwritten).  
 Dechant/Goldscheider, Goldscheider, Stuttgart 2007, p. 420.  
**€ 700 - 900**

**590**  
**Josef Lorenzl**  
**'Dancer', 1929/30**

H. 31 cm. Executed by Friedrich Goldscheider, Vienna. Earthenware, polychrome glaze. Marked: Goldscheider Wien MADE IN GERMANY, Lorenzl (black glaze stamp), 6323 143 19 (embossed), L 47 A (incised), F (black, handwritten), Restored.  
 Dechant/Goldscheider, Goldscheider, Stuttgart 2007, p. 428.  
**€ 400 - 600**

**591**  
**Josef Lorenzl**  
**'Standing Harem Dancer' table light, c. 1929**

H. 44 cm. Executed by Friedrich Goldscheider, Vienna. Earthenware, polychrome glaze. Lamp base signed: Lorenzl (embossed). Marked: HAND-DECORATED MADE IN AUSTRIA, Goldscheider Vienna (black glaze stamp), 5927 42 7 (embossed), painter's signets (handwritten).  
 Dechant/Goldscheider, Goldscheider, Stuttgart 2007, p. 420.  
**€ 800 - 1.200**



590

**592**  
**Josef Lorenzl**  
**'Dancer in Butterfly Costume (Turning)', c. 1929**

H. 30 cm. Executed by Friedrich Goldscheider, Vienna. Earthenware, polychrome glaze. Base signed: Lorenzl (faint). Marked: Goldscheider Wien, MADE IN AUSTRIA Lorenzl (black glaze stamp), 6206 171 19, 5 (embossed), label, handwritten: Traum 62067 asel. Restored.  
 Dechant/Goldscheider, Goldscheider, Stuttgart 2007, p. 419.  
**€ 600 - 800**

**593**  
**Josef Lorenzl**  
**'Stepping dancer bent forward', c. 1930**

H. 33.5 cm. Executed by Friedrich Goldscheider, Vienna. Earthenware, polychrome glaze. Base signed: Lorenzl (faint). Marked: Goldscheider Wien MADE IN AUSTRIA Lorenzl (black glaze stamp), 6223 191 8 (incised) 4 (embossed), painter's mark (handwritten).  
 Dechant/Goldscheider, Goldscheider, Stuttgart 2007, p. 426.  
**€ 600 - 800**



592



591



593



594

**594**  
**Claire Herczeg-Weiss**  
**'Standing lady with cap and muff', 1931/32**

H. 33 cm. Executed by Friedrich Goldscheider, Vienna. Earthenware, polychrome glaze. Marked: MADE IN AUSTRIA Goldscheider Wien (black glaze stamp or embossed stamp), 6597 126 31, 8 (embossed).  
Dechant/Goldscheider, Goldscheider, Stuttgart 2007, p. 433.  
€ 800 - 1.500

**595**  
**Nellie Fried**  
**'Young lady standing in the wind, c. 1931**

H. 30.5 cm. Executed by Friedrich Goldscheider, Vienna. Earthenware, polychrome glaze. Base signed: Fried (embossed). Marked: Goldscheider Wien MADE IN AUSTRIA (black glaze stamp), 6392 134 10, 3 (embossed), painter's initials (black, handwritten).  
Dechant/Goldscheider, Goldscheider, Stuttgart 2007, p. 430.  
€ 600 - 800

**596**  
**Josef Lorenzl**  
**'Standing dancer in a long skirt', c. 1931**

H. 29.5 cm. Executed by Friedrich Goldscheider, Vienna. Earthenware, polychrome glaze. Base signed: Dakon (embossed). Marked: Goldscheider Wien, MADE IN AUSTRIA HAND-DECORATED (black glaze stamp), 6399 65 11, 19 (embossed), painter's mark (handwritten).  
Dechant/Goldscheider, Goldscheider, Stuttgart 2007, p. 430.  
€ 500 - 700



595

**597**  
**Claire Herczeg-Weiss**  
**'Maskerade', 1935/36**

H. 38.3 cm. Executed by Friedrich Goldscheider, Vienna. Earthenware, polychrome glaze. Base signed: Claire Weiss (faint). Marked: Goldscheider, MADE IN AUSTRIA (black glaze stamp), 7367 37 11 (embossed), painter's mark (black, handwritten).  
Dechant/Goldscheider, Goldscheider, Stuttgart 2007, p. 456.  
€ 800 - 1.500

**598**  
**Friedrich Goldscheider, Vienna**  
**'Elegant lady with large hat and long gloves', 1936**

H. 30 cm. Earthenware, polychrome glaze. Base marked: Manufactory label. Marked: MADE IN AUSTRIA, Goldscheider Wien (black glaze stamp), 7509 6 14 (embossed), painter's signet (black, handwritten).  
Dechant/Goldscheider, Goldscheider, Stuttgart 2007, p. 461 (no artist).  
€ 600 - 800

**599**  
**Claire Herczeg-Weiss**  
**'Spaniard', c. 1936**

H. 38 cm. Executed by Friedrich Goldscheider, Vienna. Earthenware, polychrome glaze. Base signed: Weiss (faint). Marked: Goldscheider Wien MADE IN AUSTRIA, GW (gray glaze stamp), 75(...) 8A (embossed). Fire crack on the foot.  
Dechant/Goldscheider, Goldscheider, Stuttgart 2007, p. 461.  
€ 800 - 1.000



596



597



598



599



600



601



602



603

**600**  
**Claire Herczeg-Weiss**  
**'Muff Lady', 1937/38**

H. 37.5 cm. Executed by Friedrich Goldscheider, Vienna. Earthenware, polychrome glaze. Marked: Goldscheider Wien, MADE IN AUSTRIA, Claire Herczeg (black glaze stamp), 8241 36 2 (embossed), XIII (incised), mark L (embossed).

Abrasions to the hat.  
Dechant/Goldscheider, Goldscheider, Stuttgart 2007, p. 488.

€ 800 - 1.500

**601**  
**Karl Nieschlag; Josef Melcher**  
**'Nocturnal', 1937/38**

H. 40 cm. Executed by Friedrich Goldscheider, Vienna. Earthenware, polychrome glaze. Marked: MADE IN GERMANY Goldscheider Wien (black glaze stamp), 8174, 259, 7, G (embossed), F. (black, handwritten).

Glaze partially slightly discolored.  
Dechant/Goldscheider, Goldscheider, Stuttgart 2007, p. 486, no. 8174.

€ 650 - 850

**602**  
**Stephan Dakon**  
**'Frasquita', c. 1937**

H. 38.3 cm. Executed by Friedrich Goldscheider, Vienna. Earthenware, polychrome glaze. Marked: Goldscheider Wien HAND DECORATED MADE IN AUSTRIA (black glaze stamp), 8127 1 81 (embossed), S (black, handwritten). Original sales label Karl Skala, Vienna.

Dechant/Goldscheider, Goldscheider, Stuttgart 2007, no. 8127F.

€ 900 - 1.200

**603**  
**Stephan Dakon**  
**'Andante', c. 1939**

H. 33 cm. Executed by Friedrich Goldscheider, Vienna. Earthenware, polychrome glaze. Marked: Goldscheider Wien MADE IN AUSTRIA (black glaze stamp), 8474 7 (incised), G (black, handwritten).

Unevenness to the base, occurred during manufacture.  
Dechant/Goldscheider, Goldscheider, Stuttgart 2007, no. 8474F.

€ 900 - 1.200

**604**  
**Friedrich Goldscheider, Vienna**  
**'Striding slim Lady', 1940**

H. 33 cm. Porcelain, white, glazed, polychrome underglaze. Base marked: Manufactory label. Marked: Goldscheider Wien MADE IN GERMANY (black glaze stamp), 8662 8 7 (embossed), AN, B (black, handwritten).

Dechant/Goldscheider, Goldscheider, Stuttgart 2007, p. 505.

€ 400 - 600



604



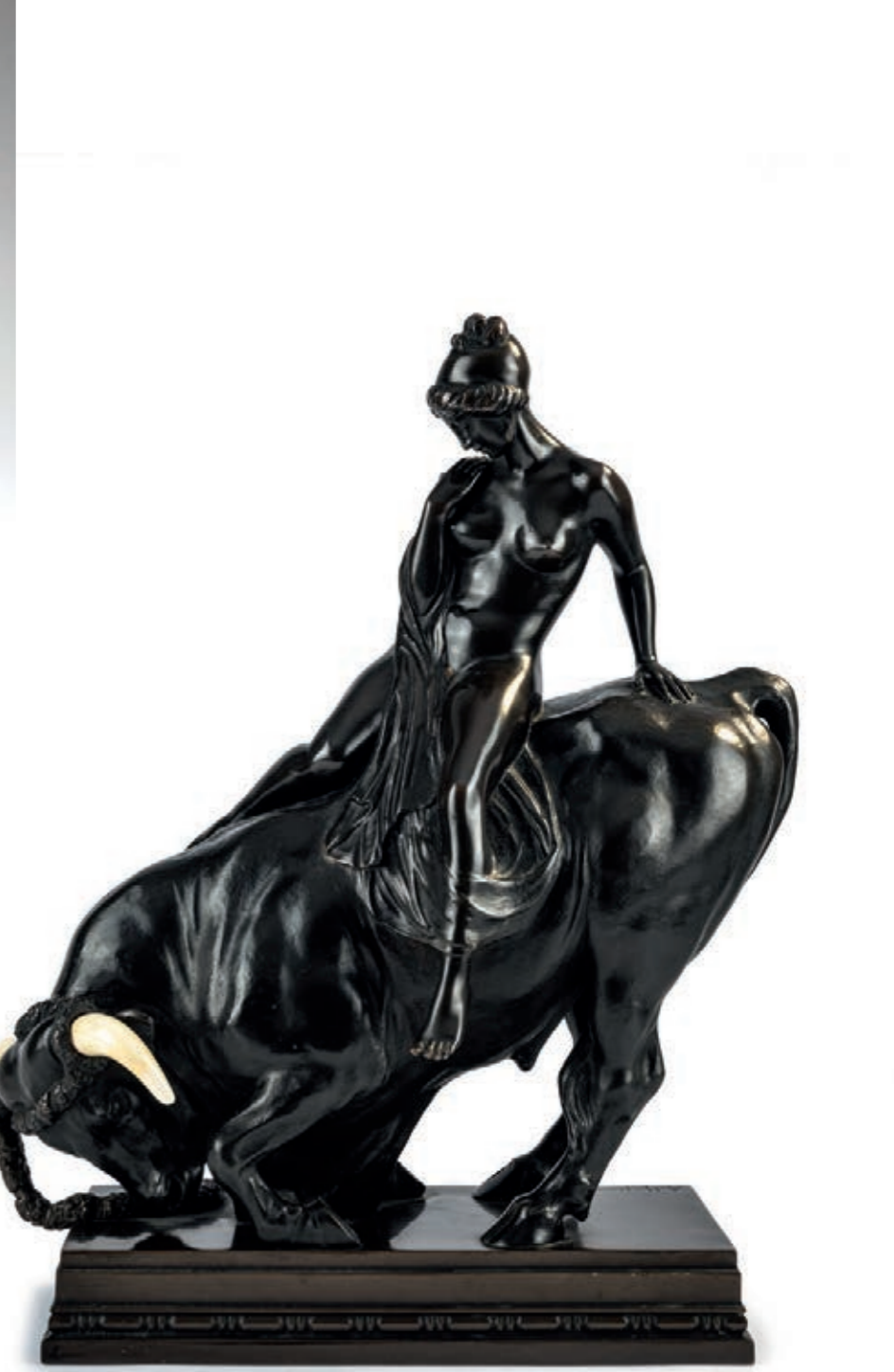
605



611



616



617

**605**  
**Stephan Dakon**  
**'Dunja', c. 1941**

H. 34.5 cm. Executed by Friedrich Goldscheider, Vienna. Earthenware, polychrome glaze. Base with factory label. Marked: Goldscheider Wien MADE IN AUSTRIA HAND-DECORATED (black glaze stamp), 8715 8 50 (embossed), painter's signet (black, handwritten).

Dechant/Goldscheider, Goldscheider, Stuttgart 2007, p. 508.

€ 700 - 900

**606**  
**Hertwig & Co., Katzhütte**  
**Seated with a book, c. 1930**

H. 19 cm. Earthenware, polychrome glaze. Marked: Manufacturer's mark FG 71 (green glaze stamp), 68 (embossed).

Image online.

€ 50 - 80

**607**  
**Hertwig & Co., Katzhütte**  
**Dancer, c. 1930**

H. 30.8 cm. Earthenware, polychrome glaze. Marked: Manufacturer's mark Germany K 18 (green glaze stamp), 6 911 (embossed).

Image online.

€ 50 - 80

**608**  
**Anton Kling**  
**'Gutacherin', 1935**

H. 33 cm. Executed by Majolica Manufaktur Karlsruhe. Earthenware, polychrome glaze. Marked: Manufacturer's mark, 4354 (raised).

Exh. cat. Karlsruher Majolika, Badisches Landesmuseum, Karlsruhe 1979, no. 274.

Image online.

€ 20 - 30

**609**  
**Fritz Behn**  
**Lady with a fur collar, 1997**

H. 50 cm. Executed by Majolika-Manufaktur Karlsruhe, 1997. Majolica, polychrome glaze. Marked: manufacturer's mark, 8138, additional mark (raised), additional inscription (black, handwritten).

Model from 1914.

Image online.

€ 50 - 80

**610**  
**Keramos, Vienna**  
**'Actress', c. 1930**

H. 25.5 cm. Earthenware, polychrome glaze. Marked: Manufacturer's mark KERAMOS MADE IN AUSTRIA (black glaze stamp), 122, 8311, 4 (embossed).

Image online.

€ 50 - 80

**611**  
**Keramos, Vienna**  
**Dancer, 1930s**

H. 42 cm. Earthenware, polychrome glaze. Marked: Wiener Kunstkeramik Keramos, manufactory mark MADE IN AUSTRIA (black glaze stamp), 2064 L (embossed).

Hairline crack in the right wrist.

€ 200 - 300

**612**  
**Hugo F. Kirsch**  
**'Girl with a Bouquet of Flowers', c. 1910**

H. 23 cm. Earthenware, polychrome glaze. Base signed: Kirsch (blue, underglaze). Marked: round manufacturer's mark.

Neuwirth, Hugo F. Kirsch, Munich 1984, p. 171, no. 153.

Image online.

€ 150 - 250

**613**  
**Austria**  
**Lady in winter costume with hat, c. 1911/12**

Standing in front of a stool. H. 17.9 cm. Majolica, polychrome glaze. Marked: 880 (embossed, indistinct).

Image online.

€ 100 - 150

**614**  
**Austria**  
**'Lady in the Wind', c. 1930**

H. 28.5 cm. Earthenware, polychrome glaze. Marked: 35186 (embossed).

Image online.

€ 200 - 300

**615**  
**Czechoslovakia**  
**Fashion lady with terrier, 1920s**

H. 27 cm. Earthenware, polychrome glaze. Marked: CZECHOSLOVAKIA (gray glaze stamp, not identified), 4240 (embossed).

Fire crack on the neck.

Image online.

€ 150 - 250

**616**  
**Vally Wieselthier**  
**Figure, c. 1923**

H. 25 cm. Executed by Vally Wieselthier workshop, Vienna. Majolica, polychrome glaze. Marked: VW, MADE IN AUSTRIA (embossed).

Chipped.

Hörmann, Vally Wieselthier, Vienna 1999, p. 154, cat. rais. K 243.

€ 700 - 900

**617**  
**Albert Hinrich Hussmann**  
**Chryselephantine figure 'Europe on the bull', c. 1908**

H. 45.5 cm (with base). Bronze, dark brown patina, carved ivory horns. Base signed: H. Hussmann K (embossed).

An EC certificate has been issued for this lot by the Department for Climate and Environmental Protection of the City of Munich, which allows objects with ivory to be marketed within the European Union.

€ 5.000 - 7.000

618

**Louise Arnaud  
Decorative plate, 1950s**

Ø 17 cm. Sheet copper covered with precious metal foils, polychrome, partially pastose enamel. Clematis decor. Gold-plated edges. Bottom signed in gold (faint); two original paper labels LOUISE ARNAUD ÉMAUX D'ART ENTIÈREMENT FAIT MAIN LIMOGES FRANCE, ÉMAUX SUR ARGENT ENTIÈREMENT FAIT MAIN SUIVANT LE PROCÉDÉ TRADITIONNEL DE LIMOGES.

Image online.

€ 150 - 200

619

**Bréval  
Small vase, 1920s**

H. 12 cm. Sheet copper covered with precious metal foil, polychrome, partially pastose enamel. Flower spikes. Signed: Bréval (gold, indistinct). Silver-plated ring.

Image online.

€ 250 - 350

620

**Andrée Fauré (PRESUMED)  
Large vase, after 1956**

H. 31 cm. Sheet copper covered with precious metal foil, polychrome impasto enamel. Signed: FAURE, Limoges (gold, handwritten). Ring and base of patinated brass.

Various cracks and losses in the glaze.

€ 800 - 1.500

621

**Camille Faure  
Vase, pre- 1956**

H. 28 cm. Sheet copper covered with precious metal foil, polychrome impasto enamel. Signed: C. FAURÉ Limoges (gold, handwritten). Ring and foot made of brass, lacquered black or silver-plated.

Restored.

€ 500 - 700

622

**Camille Faure  
Vase, pre- 1956**

H. 27.6 cm. Sheet copper covered with precious metal foil, polychrome impasto enamel. Signed: C. FAURE Limoges (gold, handwritten). Ring and foot made of silver-plated brass.

Various cracks in the glaze; restored.

Image online.

€ 400 - 600

623

**Alexandre Marty  
Vase, pre- 1943**

H. 23.5 cm. Sheet copper covered with precious metal foil, polychrome, partially pastose enamel. Signed: A. MARTY, LIMOGES (gold, handwritten). Lip and foot made of brass.

Foot chipped.

Image online.

€ 250 - 350

624

**Marylou, Limoges  
Decorative plate, c. 1940**

Ø 21 cm. Sheet copper covered with precious metal foil, polychrome enamel. Signed: Marylou Limoges (gold, handwritten).

Image online.

€ 200 - 250

625

**Mauricette Pinoteau  
Decorative plate, 1980s**

Ø 23 cm. Sheet copper covered with precious metal foil, polychrome impasto enamel. Signed: M. Pinoteau Limoges (gold, handwritten).

Base ring re-attached.

Image online.

€ 200 - 300

626

**Jules Sarlandie  
Vase, pre- 1936**

H. 17.8 cm. Sheet copper covered with precious metal foil, polychrome, partially pastose enamel. Trumpet flowers. Signed: JSarlandie LIMOGES (black, handwritten). Ring and foot made of silver-plated brass.

€ 400 - 500

627

**Jules Sarlandie  
Small vase, pre- 1936**

H. 15.3 cm. Sheet copper covered with precious metal foil, polychrome, partially pastose enamel. Signed: JSarlandie Limoges FRANCE (gold, handwritten). Ring and foot made of silver-plated brass.

Small chip.

Image online.

€ 350 - 450

628

**Jules Sarlandie  
Vase, pre- 1936**

H. 26.5 cm. Sheet copper covered with precious metal foil, polychrome enamel. Signed: JSarlandie, Limoges (black, handwritten). Brass base.

Ring lost; Hairlines to the glaze on the neck.

€ 500 - 600

629

**Jules Sarlandie  
Table light, pre- 1936**

H. 56.5 cm. Sheet copper covered with precious metal foil, polychrome, partially pastose enamel. Signed: JSarlandie Limoges (gold, handwritten). Brass and aluminum mounting, painted white.

Must be re-electrified.

€ 600 - 800



620



621



622



626



628



629

# IMPRESS

## MANAGING DIRECTOR AND AUCTIONEER:

Askan Quittenbaum  
+49 89 273702-113  
a.quittenbaum@quittenbaum.de

## DEPUTY MANAGING DIRECTOR:

Dr. Claudia Quittenbaum  
+49 89 273702-111  
c.quittenbaum@quittenbaum.de

## SPECIALISTS:

Askan Quittenbaum  
+49 89 273702-113  
a.quittenbaum@quittenbaum.de

Faridah Younès M.A.  
+49 89 273702-115  
f.younes@quittenbaum.de

Nadine Becker M.A.  
+49 89 273702-10  
n.becker@quittenbaum.de

## BOOK KEEPING AND CATALOGUE-ORDER:

Annette Ehrenhardt  
+49 89 273702-117  
buchhaltung@quittenbaum.de

Ava Boll  
+49 89 273702-120  
a.boll@quittenbaum.de

## LOGISTIC AND SHIPPING:

Dirk Driemeyer  
+49 89 273702-112  
d.driemeyer@quittenbaum.de

M2 Logistik  
+49 8121 223015  
service@m2logistik.de

Mail Boxes Etc.  
MBE Lippl Business Service  
+49 8131 37 99 132  
antique-muc@mbe-dachau.de

## PHOTOGRAPHS:

Jochen Splett

## DESIGN:

Daniela Paringer,  
design & print GbR

## PRODUCTION AND PRINT:

Peschke Solutions GmbH,  
München





QUITTENBAUM  
Kunstauktionen München

QUITTENBAUM Kunstauktionen GmbH  
Theresienstrasse 60 · D-80333 Munich  
Phone 089-27 37 02 10 · Fax 089-27 37 02 122  
info@quittenbaum.de · www.quittenbaum.de

