

# ART NOUVEAU ART DECO PART II

Auction 171 B  
15 November 2023



25  
Anniversary  
Celebration

QUITTENBAUM



# ART NOUVEAU ART DECO

PART II

AUCTION 171 B

WEDNESDAY, 15 NOVEMBER 2023

3 P.M.

**PREVIEW:  
THERESIENSTR. 60**

Thursday	9.11.	10 a.m. - 6 p.m.
Friday	10.11.	10 a.m. - 6 p.m.
Saturday	11.11.	1 p.m. - 5 p.m.
Sunday	12.11.	1 p.m. - 5 p.m.
Monday	13.11.	10 a.m. - 6 p.m.

**QUITTENBAUM  
Kunstauktionen GmbH**

Managong Director: Askan Quittenbaum  
Theresienstrasse 60 · D-80333 Munich  
Phone (+49) 89-27 37 02 10  
Fax (+49) 89-27 37 02 122  
E-Mail [info@quittenbaum.de](mailto:info@quittenbaum.de)  
Opening time: Tues-Fri 3 p.m.-6 p.m.  
and by appointment



Mitglied der Initiative  
Datenbank  
kritischer Werke

||| BDK

Bundesverband Deutscher Kunstversteigerer e.V.







287

**287**  
**Antoine-Louis Barye**  
**'Panther of India', 1855**

H. 9.8 cm, 20 x 6.5 cm. Bronze, dark green patina.  
Natural base signed: BARYE (bossed).  
**€ 700 - 900**

**288**  
**Carl Binder**  
**Dancer with a feather diadem, c. 1925**

H. 53.5 cm (total). Bronze, gilded, white enamel  
drops. Base signed: Binder (incised). Black and green  
marble base.  
Base chipped. Enamel abraded.  
**€ 2.000 - 2.500**

288





**289**  
**Marcel Bouraine; Gabriel Argy-Rousseau**  
**Light sculpture 'Pomona', c. 1928**

H. 52 cm, 54 x 26.5 cm (with base). Bronze, silver plated. Shades made of pâte de verre, molded, clear, green, yellow, blue and red. Base signed: A. Bouraine. Black marble base.

Not electrified.

Cf. Bloch-Dermant, G. Argy-Rousseau, Paris 1990, p. 124 (text, collaboration between Argy-Rousseau and Bouraine).; cf. also: No. 25.14.

€ 16.000 - 22.000

**290**

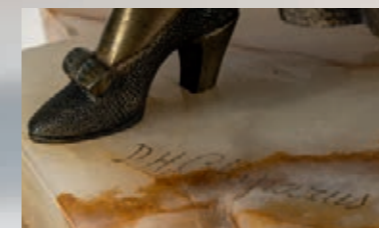
**Demètre H. Chiparus**  
**Chryselephantine figure 'Hush', c. 1922**

H. 40.5 cm (total). Bronze, cold painted, head and hands made of carved ivory. Base signed: DH Chiparus, ETLING PARIS (incised and rubbed). Bright onyx base.

Shayo, Chiparus, Woodbridge 2019, p. 98.

An EC certificate has been issued for this lot by the Department for Climate and Environmental Protection of the City of Munich, which allows objects with ivory to be marketed within the European Union.

€ 6.000 - 7.000





291

**Demètre H. Chiparus**

**Chryselephantine figure 'Astra' from the group 'Finale', c. 1925**

H. 62 cm (total). Bronze, dark brown patina, partially cold painted, face and hands made of carved ivory, painted. Base signed: DH Chiparus (engraved). Brown onyx base.

One of the artist's rare male depictions. Ivory with drying cracks. Cold paint rubbed. pedestal broken. Fingers restored.

Provenance: Art dealer USA, c. 1983. Has been in a German private collection since.

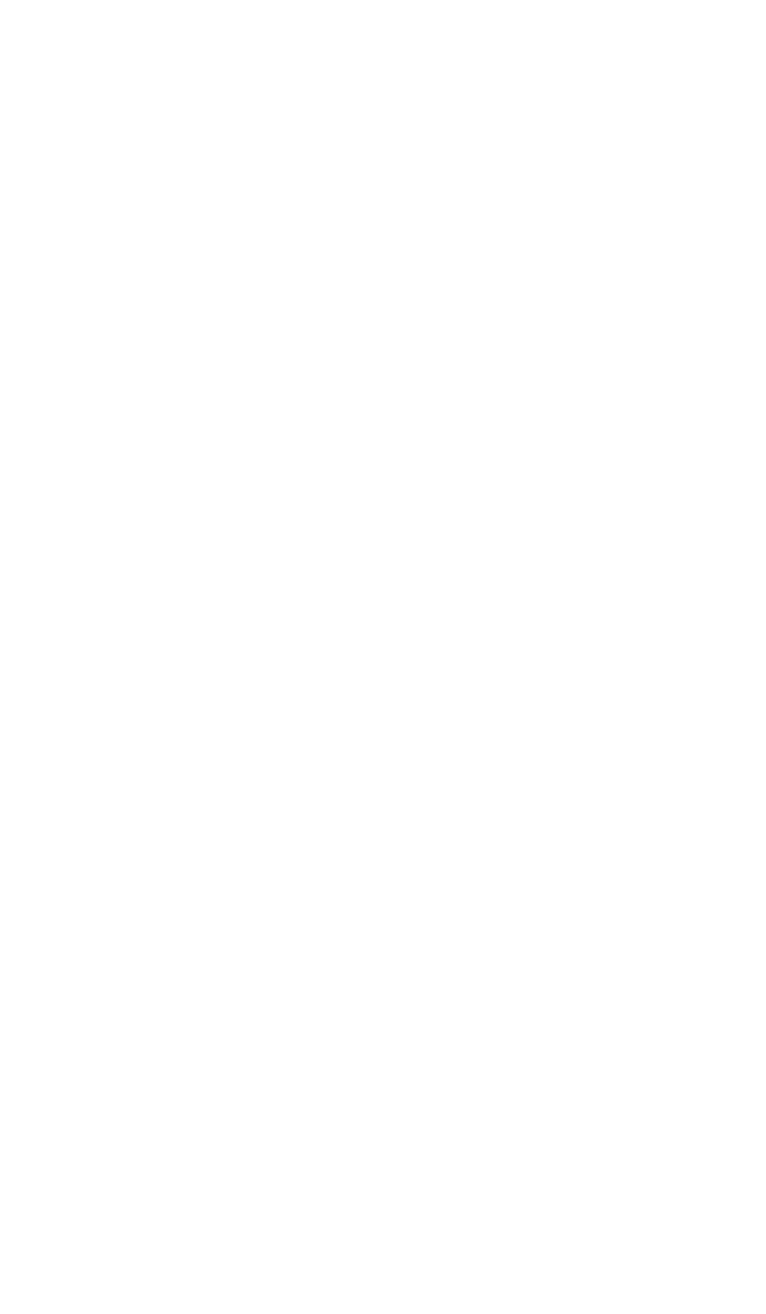
Shayo, Chiparus, Woodbridge 2019, p. 171.

An EC certificate has been issued for this lot by the Department for Climate and Environmental Protection of the City of Munich, which allows objects with ivory to be marketed within the European Union.

€ 20.000 - 25.000







**292**  
**Demètre H. Chiparus**  
**Chryselephantine figure 'Footprints', c. 1925**

Dancer in step position, her upper body bent backwards, arms stretched vertically. H. 57.6 cm (total). Bronze, cold painted, head, hands and feet of carved ivory. Sign: DH Chiparus (incised and rubbed). Composite base made of marble and onyx species.  
 Provenance: Duran, Madrid, January 27, 2010, since then in private ownership, Netherlands. Base slightly chipped.  
 Shayo, Chiparus, Master of Art Déco, Woodbridge 2019, p. 186.  
 An EC certificate has been issued for this lot by the Department for Climate and Environmental Protection of the City of Munich, which allows objects with ivory to be marketed within the European Union.  
**€ 25.000 - 35.000**





293

**Demètre H. Chiparus**

**Chryselephantine figure 'Etoile de mer' (Starfish), c. 1928**

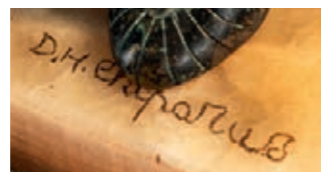
H. 71.2 cm (total). Bronze, scale structure, dark patina, decorated with pearl bands, polished; Carved ivory hands and face. Base signed: DH Chiparus (engraved). Brown onyx base.

Fingers restored.

Chiparus has repeatedly created his characters indirectly from the creations of the Ballets Russes, which appear in Paris, among other places. He was inspired by the programs and contemporary magazines. Shayo, Chiparus, New York 1999, p. 49, p. 152; Catley, Art Deco and other figures, Woodbridge 1998, p. 83; Berman, Bronzes, vol. 2, Chicago 1977, no. 1593.

An EC certificate has been issued for this lot by the Department for Climate and Environmental Protection of the City of Munich, which allows objects with ivory to be marketed within the European Union.

€ 60.000 - 70.000







294

**294**  
**Claire J. R. Colinet**  
**Chryselephantine figure 'Dancer with cymbals', after 1913**

H. 46 cm (total). Bronze, gilded, head, neck and arms made of carved ivory. Base signed: Colinet (incised). Bright onyx base. An EC certificate has been issued for this lot by the Department for Climate and Environmental Protection of the City of Munich, which allows objects with ivory to be marketed within the European Union.

€ 5.000 - 6.000



295

**295**  
**Joé Descomps**  
**Chryselephantine figurine- 'Comedy-Tragedy', 1920s**

H. 41.3 cm (total). Bronze, dark patina. Carved ivory head, arms and legs. Plinth signed: Joé Descomps, ETLING, Paris (embossed). Bright onyx base. Berman, *Bronzes*, vol. 4, Chicago 1980, p. 1162, no. 4645.

An EC certificate has been issued for this lot by the Department for Climate and Environmental Protection of the City of Munich, which allows objects with ivory to be marketed within the European Union.

€ 5.000 - 7.000

**296**  
**Amélie Colombier**  
**Chryselephantine figure 'Carmencita', c. 1903**

H. 24.8 cm (total). Bronze, gilded, head, décolleté, arms, hands and castanets made of carved ivory. Inscribed under the skirt: Foundry signet Arthur Goldscheider, Paris, 56, JD (embossed). Brown marble base. Base inscribed: CARMENCITA, AMELIE COLOMBIER (recessed).

Catley, *Art Deco and other figures*, Woodbridge 1998, p. 120.

An EC certificate has been issued for this lot by the Department for Climate and Environmental Protection of the City of Munich, which allows objects with ivory to be marketed within the European Union.

€ 1.000 - 2.000



296

**297**  
**Affortunato Gory**  
**Chryselephantine figure 'Hoop Dancer', c. 1910**

H. 27.5 cm (total). Bronze, gilded, head, arms and legs made of carved ivory. Hem of the dress signed: A. Gori (!) (embossed). Black-green marble base.

An EC certificate has been issued for this lot by the Department for Climate and Environmental Protection of the City of Munich, which allows objects with ivory to be marketed within the European Union.

€ 3.500 - 4.500

**298**  
**Affortunato Gory**  
**Chryselephantine figure 'Mlle. Muffet Petit', c. 1910**

H. 29 cm (total). Bronze, gilded, head, neck and arms as well as the mouse made of carved ivory. Stool signed on the side: A. Gory (embossed). White-brown marble base.

Berman, *Bronzes*, vol. 4, Chicago 1980, no. 3987.

An EC certificate has been issued for this lot by the Department for Climate and Environmental Protection of the City of Munich, which allows objects with ivory to be marketed within the European Union.

€ 4.000 - 5.000



297



298





**299**  
**Maurice Guiraud-Rivière**  
**'Stella', c. 1925**  
 H. 64 cm (with base). Bronze, dark patina, marble ball. Hexagon plinth signed: GUIRAUD-RIVIERE, ETLING-PARIS (embossed).  
 Catley, Art Deco and other figures, Woodbridge 1998, p. 175.  
 € 6.000 - 8.000 (Standard Taxation)

**300**  
**Gustav Gurschner**  
**Figurative table light, c. 1900**

Tapered shaft on a curved triangular base, with a female figure nestled against it growing out in a semi-sculptural manner. Shade in the form of stylized leaf tendrils with a blown-in glass shade by Loetz, Klastersky Mlyn. H. 43 cm, Ø 19 cm. Bronze, dark patina. Shade made of cased glass, clear and lemon yellow, warped 'Medici' decor made of silver-yellow dots, matt pearlescent luster.  
 Duncan, Lampen Lüster Leuchter, Munich 1979, fig. XXIV.  
 € 5.000 - 8.000

**301**  
**Gustav Gurschner**  
**Figural candlestick, 1902-04**

H. 39 cm. Bronze, cold painted. Signed: GURSCHNER DÉPOSÉ (embossed).  
 Used.  
 Duncan, The Paris Salons, vol. V, Woodbridge 1999, p. 305; Duncan, Art Nouveau Sculpture, London 1978, p. 49.  
 € 1.000 - 1.500



301



300

**302**  
**Karl Hagenauer (ATTR.)**  
**Figurative lamp base, c. 1930**

H. 27.5 cm. Execution: Hagenauer workshop, Vienna. Brass, silver plated. Marked: wHw, MADE IN AUSTRIA (embossed). Porcelain socket. Re-electrified.  
**€ 1.200 - 2.200**



302



303

**303**  
**Karl Hagenauer (ATTR.)**  
**Tennis player, c. 1930**

H. 26 cm (total). Execution: Hagenauer workshop, Vienna. Brass, silver plated. Black painted wooden base. Marked: wHw (embossed).  
**€ 700 - 900**



304

**304**  
**Hagenauer workshop, Vienna**  
**Wall mask 'Head of an African woman', c. 1930**

H. 29 cm. Ebonized wood, brass. Marked: MADE IN AUSTRIA, wHw, HAGENAUER WIEN (embossed), remains of a label. Necklace reattached; shallow chip on the neck.  
**€ 1.000 - 1.500**



305

**305**  
**Franz Hagenauer (ATTR.)**  
**Two 'Sparrow' bookends, c. 1930**

H. 11.3-12 cm. Execution: Hagenauer workshop, Vienna. Brass, silver plated. Marked: wHw, MADE IN AUSTRIA (embossed).  
**€ 800 - 1.000**



306

**306**  
**Hagenauer workshop, Vienna**  
**Fisherman, 1930s**

H. 19.5 cm. Ebonized wood and silver-plated brass, tea strainer, metal fish. Base marked: wHw (embossed). Handwritten inscription under the robe: 1942 V. 12, further inscriptions, presumably Hungarian.  
**€ 1.000 - 1.500**

**307**  
**Karl Hagenauer**  
**Leaping greyhound, c. 1950**

H. 12.5 cm, 49 x 7.3 cm. Execution: Workshops Hagenauer, Vienna. Cast brass. Marked: HAGENAUER (...) wHw MADE IN AUSTRIA (embossed, indistinct).  
**€ 1.500 - 2.500**

**308**  
**Workshops Hagenauer Vienna (STYLE)**  
**Horse head, 1950s**

H. 26.5 cm, 69.5 x 14.5 cm. Wood, painted black, aluminum, silver-plated brass. Unsigned. Mounted on oak wood panel.  
**€ 600 - 800**

**309**  
**Hans Keck**  
**Javanese dancer, c. 1925**

H. 23.5 cm. Bronze, partially cold painted. Plinth signed: H. Keck fec. (bossed).  
**€ 1.000 - 1.200**



307



308



309



310

**Alexander Kélely**  
**Archer, c. 1930**

H. 110 cm. Bronze, dark brown and greenish patina.  
Plinth signed: AKélely, ETLING Paris (embossed).  
€ 30.000 - 40.000





311

**Agathon Leonard (aka Leonard van Weydeveldt)**

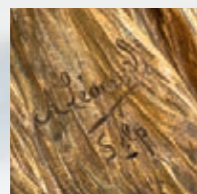
**'Danseuse au Cothurne' from the table decoration 'le Jeu de l'Echarpe', 1898**

Female figure in flowing robe, dancing, adjusting her sandal. H. 52.6 cm. Bronze, gold plated. Signed: A. Leonard Scip, foundry stamp of Susse Frères Paris, M for the chaser Mangelot (embossed).

According to Böstge/Héran seven copies have been produced of the 'Danseuse au Cothurne'.

Böstge/Héran, Agathon Léonard Le geste Art Nouveau, Paris 2003, pp. 49-75, especially p. 60 f., p. 66; Cat. Art Nouveau, State Museum Karlsruhe 1987, No. 4-5; Cat. The Art Nouveau collection, Museum für Kunst und Gewerbe Hamburg, vol. 3, no. 1308, Justus Brinckmann acquired the entire centerpiece executed by Sèvres at the Paris World Exhibition in 1900, the Hamburg museum also owns two bossetti of the sash dancers, cat. no. 1307; Cadet, Susse Frères, Paris 1992, p. 195 (sales catalog from 1905).

€ 15.000 - 25.000



312

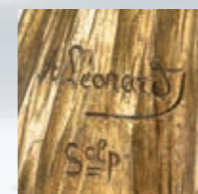
**Agathon Leonard (aka Leonard van Weydeveldt)**

**'Danseuse au tambourin à gauche' from the table decoration 'le Jeu de l'Echarpe', 1898**

Female figure in flowing robe, dancing, holding up a tambourine. H. 57 cm. Execution: Susse Frères, Paris. Bronze, gold plated. Signed: A. Leonard Scip, foundry stamp of Susse Frères Paris, M for the chaser Mangelot (embossed).

Böstge/Héran, Agathon Léonard Le geste Art Nouveau, Paris 2003, pp. 62-75, especially p. 68, no. 49; Cat. Art Nouveau, Landesmuseum Karlsruhe 1987, No. 4-5, detailed discussion of the creation of the centerpiece, the exhibitions and locations of various figures and groups; The Art Nouveau collection, Museum für Kunst und Gewerbe Hamburg, vol. 3, no. 1308, Justus Brinckmann acquired the entire centerpiece executed by Sèvres at the Paris World Exhibition in 1900, the Hamburg museum also owns two bossetti of the sash dancers, cat. no. 1307. On the occasion of the visit of the Russian imperial couple to Paris and Compiègne in 1901, the French President Emile Loubet presented the group to the Tsarina, Cadet, Susse Frères, Paris 1992, p. 64.

€ 15.000 - 25.000





313

**Josef Lorenzl  
'Pierrette', c. 1922**

H. 35 cm (with base). Bronze, dark patina.  
Lute signed: Lorenzl (embossed). Black and  
gold marble base.

€ 650 - 850

314

**Josef Lorenzl  
Chryselephantine figure 'Leant  
Back', c. 1930**

H. 37 cm (with base). Bronze, cold painted,  
head and hands made of carved ivory.  
Plinth signed: Lorenzl (embossed). Green  
onyx base.

An EC certificate has been issued for this  
lot by the Department for Climate and Envi-  
ronmental Protection of the City of Munich,  
which allows objects with ivory to be market-  
ed within the European Union.

€ 5.000 - 7.000



313



314



315

**Gustave Miklos (AFTER)  
Two female figures, 1930s**

H. 101-102 cm. White or golden plaster,  
craquelure. Unsigned.

€ 5.000 - 6.000



316

**316**  
**Michael Mörtl**  
**'Egyptian woman with hand mirror', c. 1910**  
 H. 86.5 cm (total). Bronze, dark patina. Plinth signed: Mich. Mörtl (raised). Black gray marble base.  
**€ 1.000 - 1.500**

**317**  
**Otto Poertzel**  
**Ivory figure 'dancer', c. 1913**  
 H. 25.5 cm (total). Carved ivory, metal rings. Base signed: Prof. Poertzel (incised). Honey yellow onyx base.  
 An EC certificate has been issued for this lot by the Department for Climate and Environmental Protection of the City of Munich, which allows objects with ivory to be marketed within the European Union.  
**€ 3.000 - 4.000**

**318**  
**Otto Poertzel**  
**Ivory figure 'Harp Player', c. 1913**  
 H. 25.5 cm (total). Carved ivory, metal, gilded. Base signed: Prof. Poertzel (incised). Honey yellow onyx base.  
 An EC certificate has been issued for this lot by the Department for Climate and Environmental Protection of the City of Munich, which allows objects with ivory to be marketed within the European Union.  
**€ 3.000 - 4.000**



317



318

**319**  
**Ferdinand Preiss**  
**Ivory figurine 'Boy with trumpet', pre-1914**  
 H. 15.3 cm. Carved ivory. Plinth signed: F. Preiss (incised). Onyx base.  
 Trumpet restored.  
 Shayo, Ferdinand Preiss, Woodbridge 2005, p. 126; Catley, Art déco and other figures, London 1998, p. 263.  
 An EC certificate has been issued for this lot by the Department for Climate and Environmental Protection of the City of Munich, which allows objects with ivory to be marketed within the European Union.  
**€ 1.000 - 1.500**



319





**320**  
**Ferdinand Preiss (ATTR.)**  
**Chryselephantine figure 'Little Bo-Peep', c. 1922**

Shepherdess in a short dress, standing. H. 42.5 cm (total). Bronze, cold painted, head and arms of carved ivory, partly painted. Not signed. Green onyx base.  
 Catley, *Art Deco and other figures*, Woodbridge 1998, p. 316.  
 An EC certificate has been issued for this lot by the Department for Climate and Environmental Protection of the City of Munich, which allows objects with ivory to be marketed within the European Union.  
**€ 12.000 - 15.000**



**321**  
**Ferdinand Preiss**  
**Chryselephantine figure 'Diana', c. 1928**

H. 22 cm (with base). Bronze, cold painted, head, upper body, arms and legs made of carved ivory, partly painted. Brass rods, patinated. Base signed: F. Preiss (incised). Rectangular base made of green onyx with ivory feet.  
 Shayo, *Ferdinand Preiss*, Woodbridge 2005, p. 105, *ibid.*, p. 49, photo of the Preiss & Kassler booth at the Leipzig trade fair, 1930; Catley, *Art Deco and other figures*, Woodbridge 1998, p. 270 ("The Archer"); Duncan, *Art Deco Sculpture*, London 2016, p. 206.  
 An EC certificate has been issued for this lot by the Department for Climate and Environmental Protection of the City of Munich, which allows objects with ivory to be marketed within the European Union.  
**€ 12.000 - 18.000**

322

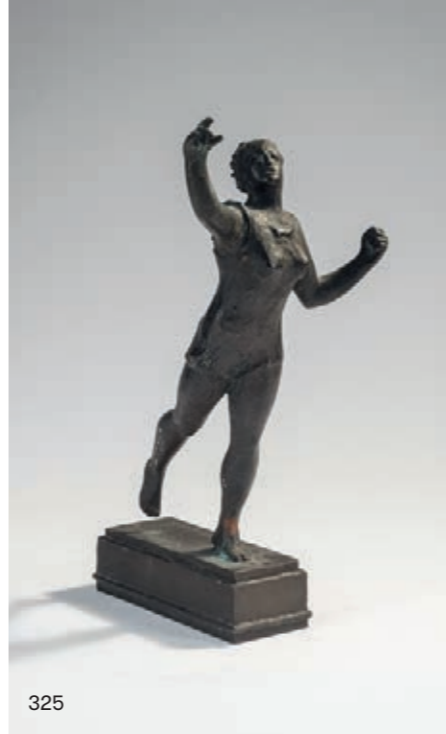
**Raymond Léon Rivoire**  
**Female nude with dog, c. 1928**

H. 59.5 cm, 61 x 16 cm. Bronze, dark patina. Plinth signed: Rivoire, Susse Fres Eds. Paris, foundry signet (embossed). Loose black and gray marble base.

€ 4.000 - 5.000



322



325

323

**Louis Sosson**  
**Dancer, c. 1910**

H. 21.5 cm (total). Bronze, dark patina. Base signed: L. Sosson (incised). Brown marble base with patinated metal garland.

€ 500 - 700

324

**Josef Wackerle**  
**Relief 'Dancer', c. 1930**

42 x 27 cm. Carved oak wood. Monogrammed center right: JW (engraved).

€ 600 - 800

325

**Paul Wynand**  
**Runner, 1930s**

H. 24.9 cm. Bronze, black patina. Base signed: WYNAND (embossed).

€ 500 - 600

326

**Bruno Zach**  
**Seated lady, c. 1930**

H. 22.5 cm. Bronze, cold painted. Armchair signed on the back: B. Zach (bossed). White-gray marble base.

Base with cracks and chips.

€ 2.000 - 3.000



326

327

**France**  
**Leaping Panther, c. 1930**

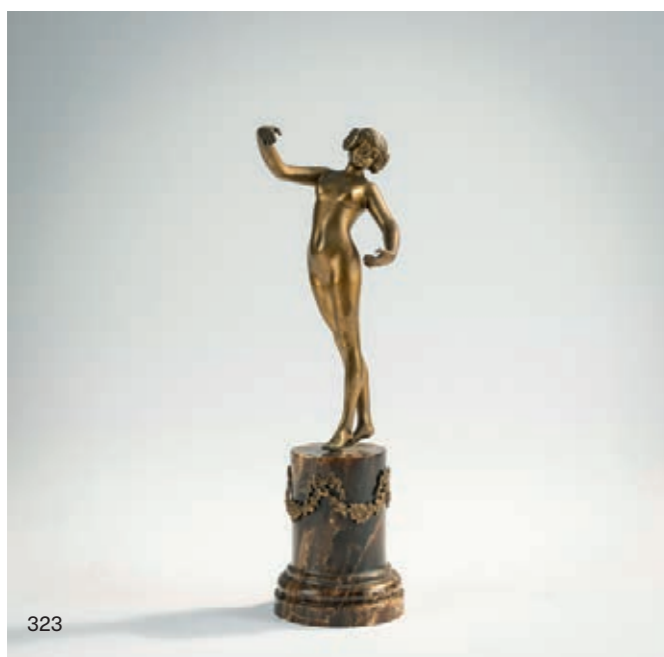
H. 18 cm, 46 x 7 cm. Bronze, blockboard with Macassar veneer. Unsigned.

Veneer with losses.

€ 1.000 - 1.500



327



323



324



# "Hentschel's charming world of children"

The studio of Meissen artist Julius Konrad Hentschel (1872- 1907) is said to have been like a nursery: "He was in the midst of it, observing with his heart; hence the immediacy of his work," wrote the Meissen Tageblatt in its obituary of the artist in 1907. The author of the article recalls the essential characteristic that accounts for the quality and enormous impact of Hentschel's porcelain figurines, namely the immediacy of the representation. In his very personal style, the artist succeeded in creating impressive snapshots of fascinating naturalness and liveliness, which captivated his contemporaries in their, for that time, novel, artistic conception and still inspire today's viewers.

After training as a modeler at the technical school of the Meissen porcelain manufactory, Hentschel studied sculpture at the academies in Munich and Dresden. In 1894 he returned to work at the manufactory, where he was now to intensify his sculptural activities in the field of porcelain and quickly become a formative Art Nouveau artist. In addition to designs for tableware, such as the famous "Crocus Déjeuner" created in 1896, with which he caused a great international sensation at the World Exhibition of 1900, he also provided numerous designs for porcelain figurines. Among the best known of these is probably his series of twelve individual figures and two groups of figures of children at play, which he designed in loose succession from 1904 onwards and the first versions of which were produced until his death in 1907. The figures, also known as "Hentschel children" after their creator, are all painted over glaze and show a balanced alternation of white surfaces and well thought-out color accents. In expression, style and content, these mark a turning point in modern artistic porcelain sculpture at the beginning of the 20th century.

With a stroke of genius, the Royal Manufactory of Copenhagen had already ended the long-lasting crisis of figurative porcelain at the end of the 19th century. In lieu of the historically oriented production at all manufactories in Europe, an "art nouveau" was now introduced, which, under the influence of Japanese art, transferred a series of typical animals of the country in the form of small sculptures. These Copenhagen porcelains caused a sensation at the Paris World Fairs in 1889 and 1900 and became a model for all other European manufactories. Thus, Meissen now also decided to produce figurines in the "Copenhagen style" and aligned the then current manufactory program accordingly.

In addition to the formal reorientation, which can be seen in the clarified, strictly contoured forms and condensed silhouettes of the porcelain figures, there were also decisive changes at the level of content. The result was a clear rejection of the previous traditional allegorical and mythological representations in the style of the 18th century. Instead, porcelain sculpture now referred to phenomena of the dignified, modern world of its wealthy clientele, which was now also considered worthy of art as a result of French Impressionist painting. Thus, the new figures reflected current phenomena of their time, such as

dancing, the modern woman, sports, exoticism, and the world of the family and the child. Serious themes were left out, for all their topicality. Instead, the figures spread an amiable mood that prompted quiet smiles.

Hentschel's figures of children were also a novelty at the time. Here the artist presented realistic, sensitive snapshots of children in typical everyday situations. Boys and girls absorbed in childish play with their doll or pets, a hobbyhorse or with each other, seemingly without perceiving their environment. They are well-fed, simply and cleanly dressed, apparently well-behaved children in a presumably wholesome environment.

The artist knew better than anyone else how to make the child figures appear as if they had been taken from life and to shape their details in such a way that the viewer gets the impression of a living figure. Following the Japanese small sculpture, he also largely dispensed with the usual "elevating pedestals" and narrative moments. This is an important design aspect. By omitting a clearly defined pedestal, i.e. their pedestal-free standing, lying or sitting, Hentschel helps his figures to achieve greater intensity and seemingly takes away everything artificial about them. With their entire habitus, they determine the surrounding space and thus charm the beholder.

These "Hentschel children" are no longer small adults that correspond to the wishful or social prestige ideas of adults, held until the end of the 19th century and thus serving as their projection surface, so to speak. Rather, these children are to be seen as independent personalities, in the sense of the modern reform pedagogy, which emerged at that time. The leading work of the movement, "The Century of the Child" by Swedish pedagogue Ellen Key, had been published just a few years earlier. Her ultimate goal was to create a harmonious, conducive to development and safe atmosphere for children in families, in order to raise them to become individuals at an early age. In his children's figures, Hentschel would already make this idea apparent, which at the time was still largely dismissed as utopian. Thus, through these charming children's figures, he was able to perpetuate his name not only among his contemporaries, but also for future generations. Collectors and connoisseurs also agree that no other children's porcelain figures come close to the quality of the "Hentschel children" and, thus, they still represent an absolute highlight in the field of figurative Art Nouveau porcelain.

We are pleased to offer you in this auction, from the collection of Peter Hans and Renate Schuck, a complete set of "Hentschel children" in very early executions from the period of 1904 to 1924 in selected decors. In addition to the individual figurines, there are also two groups of figures of "Hentschel children" that are very rare: the group of four girls on a bench, which was molded only in a few pieces, and the group of two children playing with sand molds. A number of smaller child figurines, also designed by Hentschel, as well as the girl with a bouquet of flowers, which can be assigned to the "Hentschel children" in the broadest sense, complete the offer.



328

## Konrad Hentschel 'Sitting child with picture book', 1904

H. 11 cm. Execution: KPM Meissen, before 1924. Porcelain, white, glazed, polychrome overglaze. Marked: button swords (blue, under glaze, one stroke), U 149 (incised), 145 (embossed), 22 (gray, handwritten).

Meissener Manuskripte, special ed. III, Hentschels Kinder, Staatl. Porzellan-Manufaktur Meissen 1994, p. 11, p. 21, No. 1.

€ 1.500 - 2.500



328

329

## Konrad Hentschel 'Squatting child with a doll in their hands', 1904

H. 11 cm. Execution: KPM Meissen, presumably before 1924. Porcelain, white, glazed, polychrome overglaze. Marked: button swords (blue, under glaze, indistinct), W 117 (incised), 76 (embossed), 69 (red, handwritten).

Fire crack on the left wrist.

Meissener Manuskripte, special ed. III, Hentschels Kinder, Staatl. Porzellan-Manufaktur Meissen 1994, p. 10, p. 21, No. 2.

€ 1.000 - 2.000



329

330

## Konrad Hentschel 'Child sitting on a cushion', 1905

H. 12.6 cm. Execution: KPM Meissen, before 1924. Porcelain, white, glazed, polychrome overglaze. Marked: button swords (blue, under glaze), U 150 (incised), 111 (embossed), 51 (black, handwritten).

Tip of shoe rubbed.

Meissener Manuskripte, special ed. III, Hentschels Kinder, Staatl. Porzellan-Manufaktur Meissen 1994, p. 14, p. 21, No. 3.

€ 1.200 - 2.200



330





331



332



333

**331**

**Konrad Hentschel**  
**'Standing child drinking from an onion pattern cup', 1905**

H. 15.5 cm. Execution: KPM Meissen, presumably before 1924. Porcelain, white, glazed, polychrome overglaze. Marked: button swords (blue, under glaze), W 118 (embossed).

Meissener Manuskripte, special ed. III, Hentschels Kinder, Staatl. Porzellan-Manufaktur Meissen 1994, back cover, p. 21, No. 4.

€ 800 - 1.000

**332**

**Konrad Hentschel**  
**'Standing child, riding on a stick, with drum', 1905**

H. 18 cm. Execution: KPM Meissen, before 1924. Porcelain, white, glazed, polychrome overglaze. Marked: button swords (blue, under glaze), W 119 (silver pen), 68 (red, handwritten).

Meissener Manuskripte, special ed. III, Hentschels Kinder, Staatl. Porzellan-Manufaktur Meissen 1994, p. 8, p. 21, No. 5.

€ 1.200 - 2.200

**333**

**Konrad Hentschel**  
**'Child with newspaper cap, riding a wooden horse', 1905**

H. 16.5 cm. Execution: KPM Meissen, before 1924. Porcelain, white, glazed, polychrome overglaze. Marked: button swords (blue, under glaze), W 120 (incised), 125 (embossed), 51. (red, handwritten).

Meissener Manuskripte, special ed. III, Hentschels Kinder, Staatl. Porzellan-Manufaktur Meissen 1994, p. 9, p. 21, No. 6.

€ 1.000 - 2.000



334

**334**

**Konrad Hentschel**  
**'Child with a cat in their arms, sitting on a bench', 1905**

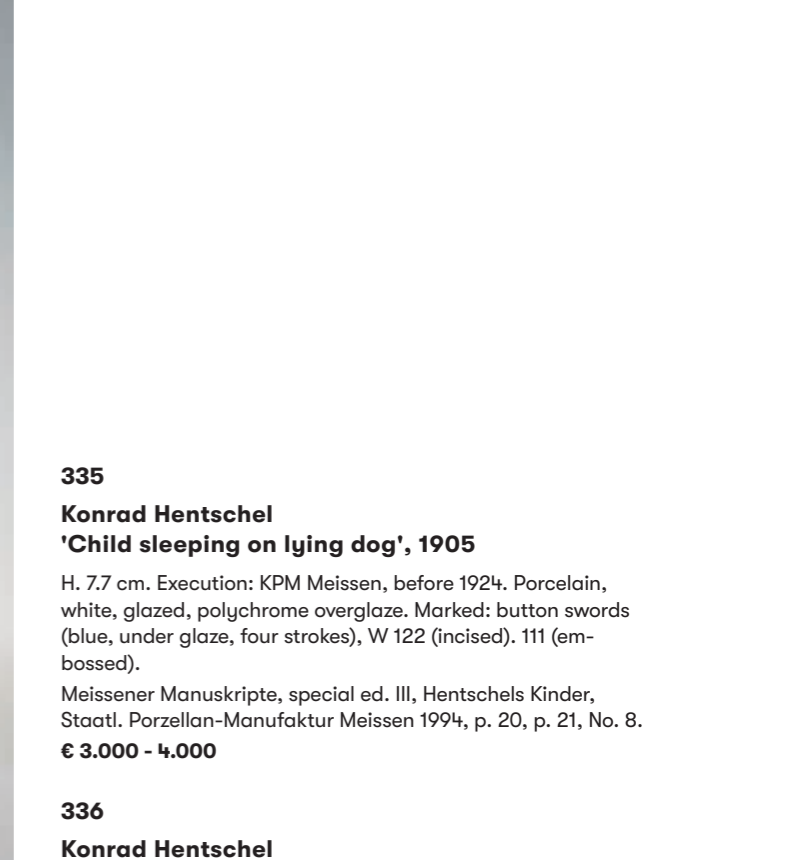
H. 12 cm. Execution: KPM Meissen, before 1924. Porcelain, white, glazed, polychrome overglaze with gold. Marked: button swords (blue, under glaze), W 121 (incised), 8 (embossed), 64 (purple, handwritten). Cat's front paws restored.

Meissener Manuskripte, special ed. III, Hentschels Kinder, Staatl. Porzellan-Manufaktur Meissen 1994, p. 17, p. 21, No. 7.

€ 600 - 800



335



336

**335**

**Konrad Hentschel**  
**'Child sleeping on lying dog', 1905**

H. 7.7 cm. Execution: KPM Meissen, before 1924. Porcelain, white, glazed, polychrome overglaze. Marked: button swords (blue, under glaze, four strokes), W 122 (incised), 111 (embossed).

Meissener Manuskripte, special ed. III, Hentschels Kinder, Staatl. Porzellan-Manufaktur Meissen 1994, p. 20, p. 21, No. 8.

€ 3.000 - 4.000

**336**

**Konrad Hentschel**  
**'Sitting child with a dog drinking from a bowl', 1905**

H. 9 cm. Execution: KPM Meissen, before 1924. Porcelain, white, unglazed. Marked: button swords, model. (blue), W 123, triangle (incised), 106 (embossed).

Meissener Manuskripte, special ed. III, Hentschels Kinder, Staatl. Porzellan-Manufaktur Meissen 1994, p. 16, p. 21, No. 9.

€ 1.500 - 2.500



336





337

**337**  
**Konrad Hentschel**  
**'Sitting child with a dog drinking from a bowl, 1905**

H. 9 cm. Execution: KPM Meissen, 1910. Porcelain, white, glazed, with polychrome overglaze. Marked: Anniversary mark 1710-1910 (embossed and blue, under glaze), W 123, 34 (embossed), 64. (red, handwritten).

Meissener Manuskripte, special ed. III, Hentschels Kinder, Staatl. Porzellan-Manufaktur Meissen 1994, p. 16, p. 21, No. 9.

€ 3.500 - 4.500

**338**  
**Konrad Hentschel**  
**'Girl bending over with a doll on a doll's carriage', 1905**

H. 13.2 cm. Execution: KPM Meissen, before 1924. Porcelain, white, glazed, polychrome overglaze with gold. Marked: button swords (blue, under glaze), W 124 (incised), 51 (embossed), 68 (red, handwritten).

Meissener Manuskripte, special ed. III, Hentschels Kinder, Staatl. Porzellan-Manufaktur Meissen 1994, p. 15, p. 21, No. 10.

€ 1.500 - 2.500

**339**  
**Konrad Hentschel**  
**'Sitting girl smelling a bouquet of flowers', 1905**

H. 15.3 cm, 22 x 15 cm. Execution: KPM Meissen, before 1924. Porcelain, white, glazed, polychrome overglaze. Marked: button swords (blue, under glaze), W 127 (incised), 76 (embossed), 9 (purple, handwritten).

Meissener Manuskripte, special ed. III, Hentschels Kinder, Staatl. Porzellan-Manufaktur Meissen 1994, p. 18 f., p. 21, No. 11.

€ 2.000 - 3.000



338



339



340

**340**  
**Konrad Hentschel**  
**'Two children baking sand molds', 1906**

H. 10.8 cm, 23.5 x 13.5 cm. Execution: KPM Meissen, before 1924. Porcelain, white, glazed, polychrome overglaze. Marked: button swords (blue, under glaze), W 165 (incised), 136 (embossed), H. (gray, handwritten).

Meissener Manuskripte, special ed. III, Hentschels Kinder, Staatl. Porzellan-Manufaktur Meissen 1994, p. 6 f., p. 21, No. 12.

€ 3.000 - 4.000

**341**  
**Konrad Hentschel**  
**'Two children baking sand molds', 1906**

H. 11 cm, 24.5 x 14 cm. Execution: StPM Meissen, 1950. Porcelain, white, glazed, polychrome overglaze. Marked: swords (blue, under glaze, two strokes), W 165 (incised), 142, date mark (indistinct). Meissener Manuskripte, special ed. III, Hentschels Kinder, Staatl. Porzellan-Manufaktur Meissen 1994, p. 6 f., p. 21, No. 12.

€ 1.000 - 1.500



341





342

**342**  
**Konrad Hentschel**  
**'Four children looking at a doll, sitting on a bench', 1906**

H. 13 cm, 25.5 x 15 cm. Execution: StPM Meissen, after 1934. Porcelain, white, glazed, polychrome overglaze. Marked: swords (blue, under glaze), W 166 (incised), 106 (embossed), 3 (purple, handwritten).

Meissener Manuskripte, special ed. III, Hentschels Kinder, Staatl. Porzellan-Manufaktur Meissen 1994, p. 12, p. 21, No. 13.

€ 2.000 - 3.000



344

**343**  
**Konrad Hentschel**  
**'Standing girl with a dangling doll in her left hand', 1907**

H. 16.1 cm. Execution: KPM Meissen, before 1924. Porcelain, white, glazed, polychrome overglaze. Marked: button swords (blue, under glaze, one stroke), X 164 (incised), 122 (embossed), 12 (black, handwritten).

Meissener Manuskripte, special ed. III, Hentschels Kinder, Staatl. Porzellan-Manufaktur Meissen 1994, Cover, p. 21, No. 14.

€ 1.000 - 2.000



343

**344**  
**Alfred König**  
**'Boy throwing snowballs', 1905-10**

H. 13.5 cm. Execution: KPM Meissen, before 1924. Porcelain, white, glazed, polychrome overglaze. Marked: button swords (blue, under glaze), W 131 (incised), 93 (embossed), 26 (red, handwritten).

Flat chip to the stand.

€ 250 - 450

**345**  
**Alfred König**  
**'Girl fending off snowballs', 1905-10**

H. 12.5 cm. Execution: KPM Meissen, before 1924. Porcelain, white, glazed, polychrome overglaze. Marked: button swords (blue, under glaze), W 132 (incised), 107 (embossed), 26 (red, handwritten).

€ 300 - 500

**346**  
**Alfred König**  
**'Two children dancing', 1905-10**

H. 19 cm. Execution: StPM Meissen, after 1934. Porcelain, white, glazed, polychrome overglaze. Marked: Swords (blue, under glaze), Y 181 (incised), 59 (embossed), 84. (gray, handwritten).

Base restored.  
 € 350 - 450



345



346



347



348



349



350

**347**  
**Paul Helmig**  
**'The first jewelry', 1907**

H. 17.5 cm. Execution: StPM Meissen, 2000. Porcelain, white, glazed, polychrome overglaze. Marked: swords (blue, under glaze), 73555, 6, date mark for 2000 (embossed), 2517 (brown, handwritten).

€ 300 - 400

**348**  
**Paul Helmig**  
**'Girl with Cherries', 1907**

H. 17.2 cm. Execution: StPM Meissen, 2000. Porcelain, white, glazed, polychrome overglaze. Marked: swords (blue, under glaze), 73554 (incised), 1 (...), date mark for 2000 (embossed), 3202 (brown, handwritten).

€ 300 - 400

**349**  
**Johann Peter Melchior (AFTER)**  
**'Girl with doll', c. 1765**

H. 10.5 cm. Execution: Porcelain Manufactory Höchst. Porcelain, white, glazed, polychrome overglaze. Marked: Manufactory mark (blue, under glaze).

€ 200 - 300

**350**  
**Johann Peter Melchior (AFTER)**  
**'Girl with pull-along toy', c. 1765**

H. 10.5 cm. Execution: Porcelain Manufactory Höchst. Porcelain, white, glazed, polychrome overglaze with gold. Marked: Manufactory mark (blue, under glaze).

€ 200 - 300





351

**351**  
**Carl Reschke**  
**'Music group Bagpipers' from the 'Indian Parade', 1914**

H. 21 cm. Execution: KPM Berlin, presumably 1931. Porcelain, white, glazed, polychrome overglaze with gold. Base signed: C. RESCHKE 1913 (embossed). Bottom marked: scepter (blue, under glaze), imperial orb (red, over glaze), 10583 (incised), date letter T (indistinct), 140/944 T (blue, handwritten).

€ 800 - 1.200



354



353

**352**  
**Lotte Lindahl**  
**Schnauzer with Teddy, 1915-47**

H. 14 cm. Execution: Bing & Grøndahl, Copenhagen. Porcelain, white, glazed, underglaze in gray and brown. Marked: three-tower mark KJØBNHAVN DANMARK (green), B&G (blue, under glaze), LL, 2109 (green, under glaze).

Image online.

€ 180 - 220

**353**  
**Martin Wiegand**  
**'Pierrot', 1906-09**

H. 35.4 cm. Execution: StPM Meissen 1934-46. Porcelain, white, glazed, polychrome overglaze. Marked: Swords (blue, under glaze), Y 164 (incised), 91 (embossed).

Base restored on the inside.

€ 1.000 - 1.200

**354**  
**Ernest Barlach**  
**'Seated Girl', 1908**

H. 23 cm. Execution: Schwarzburger Werkstätten für Porzellankunst, Unterweissbach, before 1925. Porcelain, white, glazed. Marked: Schwarzburger Werkstätten / für Porzellankunst, fox, U 11 (embossed).

€ 1.200 - 1.600



355

**355**  
**Theodor Schmuz-Baudiss**  
**Tureen, gravy boat and two 'Ceres' mocha cups, 1912**

H. 4.7 cm, H. 14 cm, H. 15 cm. Execution: KPM Berlin, 1913, 1914 and 1921. Porcelain, white, glazed, gold painting. One cup additionally enameled. Marked: scepter, artist's signet (under glaze), orb, iron cross (overglaze), date letters, shape symbol (embossed). Von Treskow, Die Jugendstilporzellane der KPM Berlin, Munich 1971, p. 168 f.; Exh. cat. Theodor Hermann Schmuz-Baudiss, Hohenberg/Eger 1990, p. 151.

€ 500 - 800



356

**356**  
**KPM Berlin**  
**Large coffee pot, 1918**

H. 39.5 cm. Porcelain, white, glazed. Marked: Scepter (blue, under glaze, one stroke), iron cross, V, date letter S, additional symbol (embossed).

€ 500 - 600

**357**  
**Johann Joachim Kaendler**  
**18-piece Swan service, 1737-42**

Coffee pot, teapot, cream pot, sugar bowl, 6 cups with saucers, 6 cake plates, serving plate. H. 10-25 cm; Ø 20-30.5 cm. Execution: StPM Meissen, 1983-1996. Porcelain, white, glazed, polychrome overglaze with gold. Marked: Swords (blue, under glaze, four strokes), various model and shape numbers, date symbols (embossed).

One cup with a crack to the bottom; one extra saucer.

€ 2.000 - 2.500



357





358

**358**  
**Rudolf Hentschel**  
**Decorative plate with landscape, c. 1900**

Ø 26.4 cm. Execution: KPM Meissen, before 1924. Porcelain, white, glazed, polychrome overglaze. Landscape with farm fence and flowering tree. Marked: button swords (blue, under glaze), T 22 1 22 (embossed).

€ 600 - 800

**359**  
**Rudolf Hentschel**  
**Dinner plate 'wing pattern', 1901**

Ø 27 cm. Execution: KPM Meissen, before 1924. Porcelain, white, glazed, underglaze in gray-green and dark blue. Marked: button swords (blue, under glaze), 1/82, T 22 (embossed), 35. (blue, handwritten).

Bröhan Museum Berlin, Porzellan, Vol. 2, Berlin 1996, p. 46.

€ 600 - 800

**360**  
**Therese Trethan**  
**Six knife rests 'Curvy shape' - Agnes', 1903**

L. 11.8 cm. Execution: Ferdinand Selle, Burgau. Porcelain, white, glazed, with green underglaze. Unsigned.

Neuwirth, Österreichische Keramik des Jugendstils, Munich 1974, illustration p. 437 (decor design); Bröhan Museum Berlin, Cat. Porzellan, Vol. 1, Berlin 1993, pp. 307-310, No. 291, 259, 297.

€ 400 - 500

**361**  
**Therese Trethan**  
**Three oval plates 'Curvy Form' - Agnes', 1903**

35.5 x 23.5 - 51 x 34 cm. Execution: Ferdinand Selle, Burgau. Porcelain, white, glazed, with green underglaze. Marked: Manufactory mark (green, under glaze).

Neuwirth, Österreichische Keramik des Jugendstils, Munich 1974, illustration p. 437 (decor design); Bröhan Museum Berlin, Cat. Porzellan, Vol. 1, Berlin 1993, pp. 307-310, No. 291, 259, 297.

€ 700 - 800



359



360



361



362

**362**  
**Therese Trethan**  
**Lidded tureen with plate 'Curvy Form' - Agnes', 1903**

H. 18.5 cm; Ø 32.5 cm. Execution: Ferdinand Selle, Burgau. Porcelain, white, glazed, with green underglaze. Marked: Manufactory mark (green, under glaze).

Lid with cracks. Fire crack under one handle.

Neuwirth, Österreichische Keramik des Jugendstils, Munich 1974, illustration p. 437 (decor design); Bröhan Museum Berlin, Cat. Porzellan, Vol. 1, Berlin 1993, pp. 307-310, No. 291, 259, 297.

€ 500 - 600

**363**  
**Therese Trethan**  
**Six dinner plates 'Curvy Shape' - Agnes', 1903**

Ø 27 cm. Execution: Ferdinand Selle, Burgau. Porcelain, white, glazed, with green underglaze. Marked: Manufactory mark (green, under glaze).

Neuwirth, Österreichische Keramik des Jugendstils, Munich 1974, illustration p. 437 (decor design); Bröhan Museum Berlin, Cat. Porzellan, Vol. 1, Berlin 1993, pp. 307-310, No. 291, 259, 297.

€ 500 - 600

**364**  
**Therese Trethan**  
**Six starter plates 'Curvy shape' - Agnes', 1903**

Ø 20.5 cm. Execution: Ferdinand Selle, Burgau. Porcelain, white, glazed, with green underglaze. Marked: Manufactory mark (green, under glaze).

Neuwirth, Österreichische Keramik des Jugendstils, Munich 1974, illustration p. 437 (decor design); Bröhan Museum Berlin, Cat. Porzellan, Vol. 1, Berlin 1993, pp. 307-310, No. 291, 259, 297.

€ 400 - 500

**365**  
**Therese Trethan**  
**15 service pieces 'Curvy shape' - Agnes', 1903**

Creamer, two cups with saucers, four breakfast plates, soup plates, four dinner plates, oval serving bowl. H. 6.2-12.5 cm, Ø 20.5-26.5 cm, 40 x 27 cm. Made by Ferdinand Selle, Burgau. Porcelain, white, glazed, with green underglaze. Marked: Manufactory mark (green, under glaze), model and painter numbers. With two extra saucers.

Neuwirth, Österreichische Keramik des Jugendstils, Munich 1974, ill. p. 437 (decor design); Bröhan Museum Berlin, Cat. Porzellan, Vol. 1, Berlin 1993, pp. 307-310, no. 291, 259, 297.

€ 1.300 - 1.800



363



364



365





367

**366**  
**Maurice Dufrene (after)**  
**Vase, 1920**

H. 14.3 cm. Made by Manufacture Nationale de Sèvres. Porcelain, white, glazed, polychrome overglaze with gold. Stylized tendril decor. Marked: Manufactory mark 1900, mark of the painting department 1920, (unknown painter) d'après M. Dufrene, 10 Ex / Ex 10, H REM 5 (embossed). Image online.  
**€ 400 - 500**

**367**  
**Gaston Le Bourgeois**  
**Ostrich, 1925**

Sitting. H. 50 cm, 104 x 41 cm. Execution: Manufacture Nationale de Sèvres, 1925. Stoneware, glazed matt white. Signed: VR, manufacturer's mark 1928, MADE IN FRANCE (embossed). With base.  
**€ 10.000 - 15.000**



368

**368**  
**Ernest Bussière**  
**Large vase 'Marrons', c. 1902**

H. 43 cm. Execution: Keller & Guérin, Lunéville. Earthenware, strong relief decoration with chestnut branches. Stylized flowers on the neck. Luster glaze in dark red and bronze. Signed on the bottom: K&G Lunéville, bussiere (luster script). Hoffmann, The Modern Style, Stuttgart 2006, p. 317.  
**€ 4.000 - 5.000**

**369**  
**Manufacture Nationale de Sèvres**  
**Decorative plate 'Marguerite', 1929**

Ø 19.2 cm. Stoneware, reliefed, brown glaze. Marked: manufacturer's mark with year letter b, artist's signet LoD (not identified). Image online.  
**€ 400 - 450**

**370**  
**Henri Simmen, Meudon**  
**Small vase, c. 1930**

H. 9 cm. Stoneware, high-firing glaze in oxblood red and oxide green. Signed: HSim, DR (black, handwritten).  
**€ 1.300 - 1.600**



370





**371**  
**Villeroy & Boch, Vaudrevange**  
**Vase with pond landscape, c. 1898**

H. 35 cm. Earthenware, polychrome relief glaze. Flying swans over shore landscape. Marked: Wallerfangen (black glaze stamp).  
**€ 1.000 - 1.200**

**372**  
**Friede Kieser-Maruhn**  
**Lion cub, c. 1930**

H. 10 cm. Execution: Waldkater-Keramik, Dessau. Majolica, alkaline white glaze. Marked: Manufactory mark, FRIEDE KIESER-MARUHN, 146 (embossed).  
 Image online.  
**€ 100 - 200**

**373**  
**Tonwerke Kandern**  
**Vase 'Butterflies', c. 1917**

H. 28.5 cm. Majolica, black and green slip on olive gray. Butterflies in tendrils. Marked: KTK, 852, 4 (embossed or incised).  
 Image online.  
**€ 400 - 500**

**374**  
**Wilhelm Sus**  
**'Wall plate with roses', 1901**

Ø 51 cm. Execution: Grand Ducal Majolica Manufactory Karlsruhe. Majolica, polychrome glazed on cream white. Marked: Manufactory mark (blue, over glaze).  
 Hairline crack; damage to the stand.  
**€ 800 - 1.000**

**375**  
**Willi Münch-Khé**  
**'Fruit Bowl Leaves', 1914-23**

H. 12.2 cm, Ø 35 cm. Execution: Majolica Manufactory Karlsruhe. Majolica, polychrome enamel on a cream-white background. Marked: Manufactory mark (embossed and blue), Eg, 1371 20 (embossed).  
 Several light to medium chips on the edge and on the stand.  
 Image online.  
**€ 250 - 300**



374

**376**  
**Max Laeuger, Kandern**  
**Vase, 1905-09**

H. 20 cm. Majolica, polychrome slip glaze on a light green background. Flower ribbon. Marked: MLK GESETZL. GESCHZT, MUSTER GESETZL. GESCHTZT (embossed), 438, 4 (incised).  
**€ 650 - 850**

**377**  
**Max Laeuger, Kandern**  
**Vase 'Trees', 1897**

H. 32.2 cm. Majolica, light green and brown slip on a blue-green or dark blue background. Marked: MLK GESETZL. GESCHZT (embossed), 3 (incised).  
 Cf. Kessler-Slotta, Max Laeuger, Saarbrücken 1985, no. 19.  
**€ 900 - 1.200**



376



377





378

378

**Max Laeuger, Kandern**  
**Vase 'Star Flowers', c. 1897**

H. 16.2 cm, Ø 18 cm. Majolica, light green and black slip on a reddish brown background. Marked: MLK GESETZL. GESCHZT, MUSTER GESETZL. GESCHTZT (embossed), 33 a, 4 (incised).

Chipped glaze; abrasions.

€ 700 - 900

379

**Max Laeuger, Kandern**  
**'Centerpiece on five Legs', 1905**

H. 13.5 cm, Ø 29.3 cm. Majolica, vanilla yellow and black or black and white marbled glaze, gold platelets. Marked: MLK GESETZL. GESCHZT, MUSTER GESETZL. GESCHTZT (embossed), 359, 4 (incised).

Restored. Flaws in the gold ribbon.

€ 1.000 - 1.500

380

**Max Laeuger, Kandern**  
**Vase 'Gold Mosaic', c. 1906**

H. 11.7 cm. Majolica, dark blue and black glaze, green ribbon with black slip, torn gold foil and white enamel. Bez.: MUSTER GESETZL. GESCHTZT, MLK GESETZL. GESCHZT (embossed), 435, S (incised).

Glaze flaking.

€ 2.000 - 2.500



379

381

**Max Laeuger, Kandern**  
**Vase 'Silver Mosaic', c. 1906**

H. 18.5 cm. Majolica, black slip on brown background, torn silver foil. Ref.: 398 MLK GESETZL. GESCHZT, MUSTER GESETZL. GESCHTZT, V (embossed).

Small defect in one ring, glaze defects.

Cf. Kessler-Slotta, Max Laeuger, Saarbrücken 1985, no. 62.

€ 1.200 - 1.600

382

**Max Laeuger, Kandern**  
**Vase and cover, 1909**

H. 25 cm. Majolica, slip painting in yellow and dark green on vanilla yellow. Signed and dated ML 1909 (incised), 483 (black, handwritten).

Chipped.

€ 700 - 900

383

**Max Laeuger, Kandern**  
**Warmer, c. 1909**

H. 12.1 cm, Ø 24.5 cm. Majolica, blue and black slip on a white background. Marked: MLK GESETZL. GESCHZT, MUSTER GESETZL. GESCHTZT (embossed), 476, 4 (incised).

Glaze flaking. With brass insert and candle holder.

Image online.

€ 250 - 350



380



381



382





385

**384**

**Michael Powolny**  
**'Crinoline with Garland of Flowers', 1907**

H. 29.5 cm. Executed by Gmundner Keramik. Earthenware, polychrome glaze. Marked: Manufactory mark, 108 (embossed).

Frottier, Michael Powolny, Vienna 1990, cat. rais. 57; Die Kunst, Vol. 22 (1910), pp. 43-44.

Image online.

€ 400 - 500

**385**

**Josef Lorenzl**  
**'Oriental dancer in pose', c. 1923**

H. 44.5 cm. Execution: Friedrich Goldscheider, Vienna. Earthenware, polychrome glaze. Base marked: 5267 69 4 (faint). Bottom marked: MADE IN AUSTRIA, Goldscheider Vienna (black glaze stamp), XXIII D1, RH (black, handwritten).

The model also exists as a lamp base.

Dechant/Goldscheider, Goldscheider, Stuttgart 2007, p. 404.

€ 1.500 - 2.500



386

**386**

**Josef Lorenzl**  
**'Standing female nude with large fan, hat and Borzoi', 1936/37**

H. 37.5 cm. Execution: Friedrich Goldscheider, Vienna. Earthenware, polychrome glaze. Marked: MADE IN GERMANY, Goldscheider, Vienna (black glaze stamps), 7722 148 31 (embossed), X (incised), painter's signet (black, handwritten).

€ 1.200 - 2.200

**387**

**Josef Lorenzl**  
**'Sonata', c. 1936**

H. 41.5 cm. Execution: Friedrich Goldscheider, Vienna. Earthenware, polychrome glazed. Bottom marked: MADE IN GERMANY, Goldscheider Vienna (black glaze stamps), 8459 59 31 (embossed), MG (brown, handwritten).

Fingers of the left hand restored.

€ 1.500 - 2.500

**388**

**Vereinigte Wiener and Gmundner Keramik**  
**Mouse and Hare with Bluebells, c. 1911**

H. 5.5-13.5 cm. Earthenware, polychrome glaze. Marked: marks of the Viennese and Gmundner ceramics, 1036, 1037 (embossed).

Mouse: flower rubbed several times. Rabbit: small chip to the base.

Image online.

€ 400 - 500

**389**

**Michael Powolny**  
**'Putto with grapes (autumn)', c. 1907**

H. 37 cm. Execution: Wiener Keramik. Earthenware, glazed yellow, blue and green on white. Marked: Artist's signet, workshop signet (embossed).

A few abrasions to the hair.

Neuwirth, Österreichische Keramik, Munich 1974, No. 85; Frottier, Michael Powolny, Vienna 1990, cat. rais. 28, fig. 24; DKD XXIII (1908/09), p. 166.

€ 2.500 - 3.500



389

**390**

**Vienna**  
**Covered vase, c. 1911**

H. 13 cm. Earthenware, glazed black on white with gold. Colorless craquelure.

Marked: 6 (black, handwritten).

Image online.

€ 300 - 400

**391**

**Domenico Mastroianni, Rom**  
**Biedermeier lady, 1920s**

H. 24 cm. Earthenware, polychrome glaze. Marked: D. Mastroianni Roma (black, handwritten).

€ 350 - 450



391





392

**392**

**France**  
**'Plique-à-jour' Crucifix, c. 1900**

H. 17.7 cm. Silver, plique-à-jour, pearls. Unsigned.  
Foot bent and dented; crazing.

€ 600 - 800

**393**

**France**  
**Cane handle, c. 1905**

Total length: 16 cm. Silver, niello decoration with trefoil, wood, varnished black. 123.08 grams in total. 68 x 113 mm. Marked: weevil mark, 900, DEPOSE (embossed).

€ 500 - 700



393

**396**

**Eugene Lefebvre, Paris**  
**'Libellules' bowl, c. 1900**

Silver, cut glass. 208.54 grams in total. H. 5 cm, Ø 14.2 cm. Marked: Minerva head, workshop signet in the lozenge (embossed).

€ 700 - 800

**397**

**Jean E. Puiforcat, Paris**  
**Two napkin rings, c. 1930**

Silver. 65.47 grams in total. Inner diameter 4.5 cm. Marked: workshop signet in the lozenge, Minerva head (embossed).

In original box.

€ 500 - 600

**398**

**Jean E. Puiforcat, Paris**  
**Fork and spoon, c. 1930**

Silver. 205.97 grams in total. L. 20.3-20.5 cm. Marked: workshop signet in the lozenge, Minerva head (embossed).

Highly stylized owner's monogram (engraved).

€ 500 - 600



396

**394**

**France**  
**Cigarette case, c. 1928**

Silver, gold-plated inside, black lacquer, eggshell chips. 80 grams in total. 84 x 60 mm. Marked: Boar head (2x), workshop signet R(...) in the lozenge, 787 (embossed).  
Image online.

€ 400 - 500

**395**

**Hermès, Paris**  
**Box, c. 1950**

Silver. 779 grams in total. H. 9 cm, 14 x 11 cm. Marked: Boar's head, additional mark (indistinct), HERMES PARIS (embossed).

€ 2.000 - 3.000



395



397



398



399

**399**  
**Jean E. Puiforcat, Paris**  
**Centerpiece, c. 1930**

Silver, teak. 751 grams in total. H. 10.8 cm, Ø 25.1 cm.  
 Marked: workshop signet in the lozenge, Minerva head (embossed).

€ 2.500 - 3.500

**400**  
**Jean E. Puiforcat, Paris**  
**Salt and pepper dishes, c. 1930**

Silver, teak. 79.53 grams in total. H. 10.8 cm, Ø 25.1 cm.  
 Marked: JEAN E. PUIFORCAT, workshop signet in the lozenge, Minerva head (embossed).

€ 600 - 800



400



**401**  
**Raymond Templier**  
**Cigarette case, c. 1927**

Silver, lacquer, eggshell, enamel. 81.17 grams in total. 85 x 57 mm. Marked: Boar's head, workshop signet (3x), 15866, RAYMOND TEMPLIER (embossed).

Tiny dent.

€ 25.000 - 30.000





402

**402**  
**August Urbon**  
**Box and cover, c. 1958**

Silver. 428.24 grams in total. H. 14 cm. Execution: Wilhelm Binder, Schwäbisch Gmünd. Marked: German hallmarks 925, workshop signet (in lozenges, embossed).  
**€ 1.000 - 1.500**

**403**  
**Paul Haustein**  
**Planters, 1906**

Silver, brass insert. 294 grams in total. H. 10 cm, 35 x 12.2 cm. Marked: German hallmarks 800, two additional stamps (embossed).  
 Fig. in: Die Kunst, 1906, III. Deutsche Kunstgewerbeausstellung, Dresden 1906.  
**€ 3.000 - 4.000**

**404**  
**Darmstadt**  
**Cigarette case, c. 1900**

Silver, gold-plated inside, cut green glass stones. 102.27 grams in total. H. 8 cm, 95 x 58 mm. Marked: 900, German hallmarks (embossed).  
 Image online.  
**€ 300 - 400**

**405**  
**Munich**  
**Large jardiniere, before 1886**

Silver. 2360 grams in total. H. 11.2 cm, 52.5 x 32.5 cm. Marked: Munich city mark, workshop signet C. Weber, 2 (embossed).  
**€ 600 - 700**



403

**406**  
**Koch & Bergfeld, Bremen**  
**Cup 'Bremer Lilie', c. 1900**

Silver, gilded inside. Relieved, stylized lily decoration. 137 grams in total. H. 9 cm. Marked: 1857, workshop signet, 800 German hallmarks (embossed).  
 Image online.  
**€ 250 - 350**

**407**  
**Koch & Bergfeld, Bremen**  
**Three-piece coffee and tea service, 1903/04**

Coffee pot, tea pot, sugar bowl. Silver, chiseled, bone. 2074 grams in total. H. 11-21 cm. Marked: workshop signet, 950 German hallmarks, serial numbers 42902, 42903, 42904 (embossed).  
 Sugar bowl gilded inside. Bottom with slight indentation.  
 Heitmann (ed.), Koch & Bergfeld, Hamburg 1999, no. Z 45 (sketch).  
**€ 2.500 - 3.500**



405



407





408

**408**  
**Martin Mayer, Mainz**  
**Pill box, c. 1900**

Silver, gold-plated inside. 34 grams in total. H. 18 cm, 57 x 41 mm. Marked: German hallmarks 800, workshop signet, 55 (embossed).  
**€ 280 - 360**



409

**410**  
**Adolf von Mayrhofer, Munich**  
**Centerpiece, c. 1910**

Silver. 1002 grams in total. H. 18.2 cm, Ø 27,5 cm. Marked on the base: 900, German hallmarks, workshop signet (embossed or raised).  
Below the stand with dedication: HERRN STADTDIRECTOR HEINR. TRAMM IN FREUNDSCHAFT UND VEREHRUNG FRITZ BEINDORFF ZUM 16.11.1916.  
**€ 1.300 - 1.800**



410

**411**  
**Ernst Riegel**  
**Centerpiece, 1908**

Hemispherical cup on a florally arched trumpet base, held by four branches. Rich decor with birds in the branches, surrounding banner: UEBER ROSEN LAESZT SICH DICHTEN IN DIE AEPFEL MUSS MAN BEISSEN. Silver, cuppa gilded inside, eight chrysoptases. 830 grams in total. H. 25.4 cm, Ø 21.5 cm. Signed in the cup: ER.  
Krekel-Aalberse, Jugendstil- und Art Deco-Silber, Munich 1989, p. 134 (from: Dekorative Kunst, 1908).  
**€ 6.000 - 7.000**







412



413



414



416

**412**  
**Peter Behrens**  
**Fish knife and fish fork 'Behrens' - '4800', 1900/01**  
 Silver. 109.86 grams in total. L. 18.1-20.2 cm. Execution: MJ Rückert, Mainz. Marked: RÜCKERT 800 German hallmarks (embossed).  
 Sängler, Das deutsche Silber-Besteck, Stuttgart 1991, p. 113.  
**€ 1.400 - 1.600**

**413**  
**Peter Behrens**  
**Two coffee spoons 'Behrens' - '4800', 1900/01**  
 Silver. 48.83 grams in total. L. 14 cm. Execution: MJ Rückert, Mainz. Marked: RÜCKERT 800 German hallmarks (embossed).  
 Sängler, Das deutsche Silber-Besteck, Stuttgart 1991, p. 113.  
**€ 600 - 700**

**414**  
**Fritz Schwerdt**  
**Hand candlestick, c. 1930**  
 Silver. 266.95 grams in total. H. 4.7 cm, 22.6 x 13.7 cm. Marked: Workshop signet, 800 SCHWERDT U. PLUM AACHEN (embossed).  
**€ 500 - 700**

**415**  
**Heinrich Vogeler**  
**Salt spoon 'Autumn Crocus', 1902**  
 Silver, gold plated. 4.70 grams in total. L. 6.7 cm. Execution: Wilkens & Söhne, Bremen. Marked: workshop signet, 800 German hallmarks (embossed).  
 Cf. Sängler, Das deutsche Silber-Besteck, Stuttgart 1991, p. 237.  
 Image online.  
**€ 150 - 250**

**416**  
**Durham Silver Co., New York, NY**  
**Two 'Blossom' candlesticks, 1950s**  
 Silver. 731 grams in total. H. 25.8 cm. Marked: STERLING 132, workshop signet, Durham (embossed).  
**€ 1.500 - 2.500**

**417**  
**Durham Silver Co., New York, NY**  
**Creamer and sugar bowl, 1950s**  
 Silver. 436 grams in total. H. 13.6 cm; H. 13 cm. Marked: STERLING 1155, workshop signet, Durham (embossed).  
**€ 1.200 - 1.800**



417



418

**418**  
**Grann & Laglye, Copenhagen**  
**Powdered sugar shaker, 1923**  
 Silver. 182 grams in total. H. 19 cm. Marked: workshop signet, signet Christian F. Heise, Copenhagen 23, Dansk Arbejde (embossed).  
**€ 600 - 800**



421

**419**  
**Johan Rohde**  
**'Konge' - 'Acorn' cake server, 1915**  
 Silver. 78.74 grams in total. L. 19.5 cm. Execution: Georg Jensen, Copenhagen, after 1945. Marked: GEORG JENSEN in a wreath of beads, STERLING DENMARK (embossed).  
 Drucker, Georg Jensen, Atglen 2001, p. 274 f.  
 Image online.  
**€ 350 - 550**

**420**  
**Johan Rohde**  
**4 'Acanthus' teaspoons, 1917**  
 Silver. 75.36 grams in total. L. 13 cm. Execution: Georg Jensen, Copenhagen, after 1945. Marked: GEORG JENSEN in a wreath of beads, STERLING DENMARK (embossed).  
 Image online.  
**€ 100 - 200**

**421**  
**Johan Rohde**  
**Two-piece salad servers 'Acanthus', 1917**  
 Silver, gold plated. 148.35 grams in total. L. 20.4 cm. Execution: Georg Jensen, Copenhagen, 1917-30. Marked: GJ in beads, STERLING DENMARK (embossed).  
 Drucker, Georg Jensen, Atglen 2001, p. 264.  
**€ 500 - 600**



425

**422**  
**Georg Jensen**  
**Sugar cube tongs 'Magnolia', 1919**

Silver. 22.49 grams in total. L. 9.5 cm. Execution: Georg Jensen, Copenhagen, 1933-44. Marked: STERLING DENMARK, GJ, 925, three-crown mark, S (embossed). Drucker, Georg Jensen, Atglen 2001, p. 290. Image online.  
**€ 300 - 400**

**423**  
**Oscar Gundlach-Petersen**  
**Pastry server 'Parallel', 1931**

Silver. 75.00 grams in total. L. 16.1 cm. Execution: Georg Jensen, Copenhagen, 1933-44. Marked: workshop signet GJ, STERLING DENMARK. Drucker, Georg Jensen, Atglen 2001, p. 285. Image online.  
**€ 300 - 400**

**424**  
**JC Klinkosch, Vienna**  
**Basket, c. 1920**

Silver. 127.30 grams in total. Marked: 900, workshop signet JCK, Diana head, 25057 (embossed). Image online.  
**€ 300 - 400**

**425**  
**Alphonse LaPaglia**  
**Centerpiece, c. 1943**

Silver, 626 grams in total. H. 10.8 cm, Ø 22.9 cm. Marked: INTERNATIONAL STERLING, LaPaglia Designed 118 (embossed).  
**€ 1.000 - 1.500**

**426**  
**Austria**  
**Small tray, c. 1900**

Silver, floral decor. 375 grams in total. 17.4 x 37.4 cm. Marked: workshop signet, SCHWARZ & STEINER, Diana head (indistinct, embossed). Image online.  
**€ 250 - 350**

**427**  
**Austria**  
**Cigarette case, c. 1925**

Silver, gold-plated on the inside, green enamel on the outside on a guilloché background. Openwork decorated lid. 193.93 grams in total. H. 11 x 85 x 52 mm. Marked: hoopoe head, workshop signet LA, 935 (embossed). Enamel chipped off in two places. Image online.  
**€ 100 - 150**

**428**  
**St. Petersburg**  
**Pill box, c. 1920**

Silver, gilded inside, mirror glass. Outside enameled in blue on a guilloché background. 31.93 grams in total. H. 17 mm, Ø 40 mm. Marked: Kokoschnik mark with city info St. Petersburg (embossed). Small dent on the back, loss of enamel on the corners below. Image online.  
**€ 100 - 150**

429

**429**  
**Karl and Maria Bertold, Hanau**  
**Brooch, c. 1930**

Gold, black enamel and diamonds. 7.82 grams in total. 71 x 7 mm. Marked: workshop signet 750 (soldered on).  
**€ 1.000 - 1.500**

**430**  
**Etienne David**  
**Brooch, c. 1928**

Silver, blue and black enamel. 17 grams in total. 73 x 15 mm. Marked: ED, boar's head (embossed). Restoration in black enamel. Image online.  
**€ 350 - 450**

**431**  
**Patriz Huber**  
**Brooch, 1901/02**

Silver, chrysoprase. 8.71 grams in total. 25 x 41 mm. Execution: Theodor Fahrner, Pforzheim. Marked: workshop signet TF 935 DE-POSE (embossed). Cf. cat. Theodor Fahrner, Schmuck zwischen Avantgarde und Tradition, Stuttgart 1990, p. 103, no. 157.  
**€ 1.800 - 2.200**

**432**  
**France**  
**Collier, 1930**

Silver, onyx and aventurine. 32 grams in total. L. 515 mm. Clasp marked: boar head (3x).  
**€ 350 - 450**

**433**  
**Gustavo Obiols Delgado aka Gustave Obiols**  
**Belt buckle, c. 1900**

Silver, pierced, relief decoration with the profile of a young woman surrounded by poppies and capsules. 84.92 grams in total. 81 x 47 mm. Marked: G. Obiols, 16, boar's head, workshop signet in the lozenge (embossed).  
**€ 900 - 1.200**

431



432



433





**434**  
**Edgar Brandt**  
**Mantle clock, c. 1925**

H. 30 cm, 29.3 x 15 cm (with base). Sheet metal, wrought iron, dark patina. Plinth signed: E. BRANDT, FRANCE (embossed). Black and gold marble base. Mechanical movement with key, by Jauricoste, Paris.  
**€ 8.000 - 12.000** (Standard taxation)

**435**  
**Christofle, Paris**  
**Two candlesticks, c. 1900**

Each with three flames, floral. H. 29 cm. Metal, silver plated. Marked: Gallia mark, knight, 4375 J or r (embossed).  
**€ 1.800 - 2.000**

434



435

**436**  
**Edgar Brandt**  
**Two-piece wall lantern, 1924**

Body: H. 63 cm, Ø 46 cm. Wall mounting: H. 69 x 96 x 2 cm. Wrought iron, matted glass. Each signed: E.Brandt (bossed). Provenance: Audap-Mirabaud auction house, November 19, 2012; Before that, family property since 1927.  
**€ 1.500 - 2.000**

**437**  
**Christofle, Paris**  
**Twelve Knife rests, c. 1925**

Different animal characters. L. 8.2-10.8 cm. Silver plated metal. Marked: Springer, GALLIA (embossed). In original box. Image online.  
**€ 700 - 800**



436



439

**438**  
**Christian Fjerdingstad**  
**Gravy boat with spoon 'Swan', c. 1932**

H. 4.9 cm; 20.5 x 9.9 cm; L. 20 cm. Execution: Christofle Paris, until 1976. Gallia metal, silver-plated. Marked: GALLIA FRANCE, Springer mark, PROD. CHRISTOFLE, knight, (embossed). Bröhan Museum Berlin, Metallkunst der Moderne, Vol. VI, Berlin 2001, p. 105. Image online.  
**€ 500 - 700**

**439**  
**France**  
**Two bronze candelabra, c. 1850**

Six lights. Stylized floral. H. 64 cm, Ø 28 cm (with base). Bronze, dark patina. Unsigned. Black slate base.  
**€ 2.400 - 3.400** (Standard taxation)





440

441

**440**  
**Charles (Karl) Korschann, Paris**  
**Two vases with handles 'Nuit', c. 1900**

H. 32.5-32.8 cm. Made by Louchet, Paris. Bronze, gilded, decorated in relief. On the front with an allegory of the night in the form of a naked young woman in the midst of poppies, on the back poppy capsules and bats. Signed: CH. KORSCHANN PARIS, foundry mark LOUCHET CISELEUR PARIS (embossed). 1 sheet metal insert.  
**€ 1.700 - 2.500** (Standrad taxation)

**441**  
**Henri Gautruche**  
**Vase, c. 1902**

H. 23 cm. Bronze, brown patina. Signed: Gautruche, foundry stamp Susse Frères Paris, M (Mangenot) (bossed).  
**€ 300 - 400**



442

443

**442**  
**Berlin**  
**Stationery, c. 1910**

H. 8 cm, 30.5 x 18.3 cm. Bronze, dark patina, glass inserts. Unsigned.  
**€ 800 - 1.200**

**443**  
**Erhard & Sons, Schwäbisch Gmund**  
**Bookend, 1910-15**

H. 12.7 x 31.5 x 13.2 cm. Brass, root wood.  
**€ 800 - 1.000**

**444**  
**Joseph Maria Olbrich**  
**Candlestick, 1902**

H. 36.8 cm. Execution: Eduard Hueck, Lüdenscheid. Pewter, cast. Bottom marked: ligated artist's signet, manufacturer's mark E. HUECK EDELZINN 1819 (relief). Restored.  
 Exh. cat. Joseph Maria Olbrich, Museum Mathildenhöhe Darmstadt, Darmstadt 1983, No. 410, version in 'silver pewter'; Cat. Museum Künstlerkolonie Darmstadt, Darmstadt 1990, p. 196, the candlestick is described there as one of the 'synonyms for Darmstadt Art Nouveau'; Bröhan Museum Berlin, Metallkunst der Moderne, Vol. VI, Berlin 2001, No. 157.  
**€ 1.200 - 1.600**

**445**  
**Orivit-Metallwarenfabrik, Cologne**  
**Cachepot, c. 1904**

H. 26.6 cm, Ø 33 cm. Orivit metal, earthenware, green, whitish crystal glaze. Marked: Workshop signet, 2576, A. ALVAREZ BILBAO, mark in the diamond (embossed). Exh. cat. Orivit Zinn des Jugendstils, Cologne 1992, No. 2575.  
**€ 1.500 - 2.000**



444



445





446

446

**Albert Reimann, Berlin (ATTR.)  
Candlestick, c. 1902**

Four-flame. H. 43 cm. Pewter. Unsigned.  
€ 550 - 650

447

**Richard Riemerschmid  
Candlestick, 1897**

H. 8.9 cm, 16 x 14.1 cm. Execution: Vereinigte Werkstätten,  
Munich. Copper, burnished. Removable candle holder.  
Exh. cat. Richard Riemerschmid, Munich City Museum, Munich  
1982, p. 273, no. 279.  
€ 600 - 800



447



448

448

**WMF, Geislingen  
Jardiniere, c. 1905**

H. 33.5 cm, 56 x 22.5 cm. Metal, silver-plat-  
ed, glass insert, ground and matted.  
Marked: ox, ostrich, I/O (embossed).  
WMF, Catalog 1906, reprint, Woodbridge  
1988, p. 363.  
€ 1.200 - 1.500

449

**Albin Mueller  
Table clock, c. 1903**

H. 55 cm, 27 x 18.5 cm. Execution: Fürstl.  
Stolbergisches Hüttenamt, Ilsenburg. Cast  
iron, dark brown patina, floral decoration in  
relief, brass dial and pendulum depicting a  
falcon in white, blue, brown-red and black  
enamel. Underside of the base marked:  
raised foundry mark Hirsch, GESETZLICH  
GESCHÜTZT 4015. Clockwork without  
strike by Friedrich Mauthe, Schwenningen,  
stamped on the plate: Adler FMS.  
With pendulum and key.

Cat. Museum Künstlerkolonie Darmstadt,  
Darmstadt 1990, p. 179; Bröhan-Museum  
Berlin, Metallkunst der Moderne, Vol. VI,  
Berlin 2001, p. 309, no. 280, with additional  
literature.

€ 2.500 - 3.500



449





451



452

**450**  
**Hugo Elmqvist, Stockholm**  
**Bowl with stag beetles, c. 1902**

H. 8.4 cm. Bronze, brown patina, relief decoration with stag beetles and flowers. Marked: ABE -t Metod Stockholm, foundry stamp HE, GB J, A 7 (bossed).  
 Image online.  
**€ 300 - 500**

**451**  
**Józef Fraget, Warsaw**  
**Jewelry box, c. 1900**

H. 9.4 cm, 15 x 10.6 cm. Brass, silver plated. Marked: workshop signet FRAGET BM PLAQUE with eagle, additional mark, 2788, XIX 68 (embossed).  
**€ 700 - 800**

**452**  
**Italy**  
**Paper knife and seal 'Mastiff' in a case, c. 1910**

L. 10 - 28.5 cm. Bronze, gilded. Faint mark. In original distributor's case Saluzzo.  
**€ 1.300 - 1.500**

**453**  
**S. Smith & Sons Ltd.**  
**Pilot Dashboard Clock, 1930s**

H. 7.5 cm, 9.5 x 10 cm. Sheet metal, painted black, glass, wood. Marked: S. SMITH & SONS LONDON, SWISS MADE, crown, AM 29027.  
 Mechanical movement not working.  
 Image online.  
**€ 250 - 350** (Standard taxation)

**454**  
**Vienna**  
**Two decorative plaques, 1920s.**

19.8 x 21.3 cm. Sheet-metal. Frame.  
 Image online.  
**€ 300 - 400**

**455**  
**Josef Hoffmann**  
**Platter, c. 1920**

Ø 34.5 cm. Execution: Wiener Werkstätte. Brass, silver plated. Marked: WW, rose mark, WIENER WERK STÄTTE, JH (embossed).  
**€ 1.200 - 1.600**



455

**456**  
**René Buthaud**  
**Portrait of a lady with a flower, c. 1930**

Pastel crayon on grayish paper. 47.0 x 22.0 cm (passepartout cutout), 64 x 52 cm (frame). Signed lower left: R. Buthaud (pastel). Framed under glass in a passe-partout. Not de-framed.  
**€ 1.000 - 1.500**



456



457

**457**  
**Jean Dupas**  
**Poster 'Bal de Demain', 1928**

Color lithograph on paper. 60 x 40 cm (sheet), 75 x 54 cm (with frame). Signed and dated in the plate: Jean Dupas 1928. Framed under museum glass. Few tears to the edges, small hole above the depiction, creases.  
**€ 5.000 - 6.000** (Standard taxation)

**458**  
**Peter Behrens**  
**Table cloth and six napkins, before 1905**

64 x 63 cm or 125 x 185 cm. Execution: Simon Frankel, Neustadt. Linen damask geometric pattern. Marked: artist's initials PB. Owner's initials CP (embroidered). Table-cloth with a hole.  
 Buhrs (ed.), Maß & Freiheit, Munich 2010, p. 36.  
**€ 500 - 600**

**459**  
**Peter Behrens**  
**Four napkins, c. 1901 and one napkin, c. 1903**

4 x: 61 x 60.5 cm - 62 x 61.5 cm. Execution: S. Frankel, Neustadt. Linen damask, white and champagne yellow. Marked: artist's initials PB. Pattern '376': 62.5 x 65.5 cm, 1903. Execution: Bros. Kobusch, Bielefeld. Linen damask, champagne yellow. Marked: artist's initials PB. Various owner's monograms (embroidered). Cat. Museum Künstlerkolonie Darmstadt, Darmstadt 1990, p. 24; Buhrs (ed.), Maß & Freiheit, Munich 2010, p. 30.  
 Image online.  
**€ 300 - 400**



458





460

461

462

463

464

465

**460****China  
Snuff bottle**

H. 6 cm. Lacquer, with silver and gold, mother-of-pearl inlays. Floral decor. Marked: two-character mark Qianli (gold, handwritten).

15.78 grams.

€ 250 - 300

**461****China  
Snuff bottle**

H. 6.5 cm. Peking glass, opal white and seal red, cut. On the front depiction of a sword with a gift bow, surrounded by stylized floral decoration. Wooden spoon.

71.60 grams. Wooden spoon broken off.

€ 150 - 200

**462****China  
Two snuff bottles**

H. 6.9-7.7 cm. Colorless glass, frosted, reverse glass painting with staffage figures in landscapes. Chinese script banners. Bone or wooden spoon (broken off). Lid made of red stone or jade.

28.44 grams and 47.84 grams, respectively.

€ 60 - 100

**463****China  
Cloisonné double bottle**

H. 6 cm. Enamel cloisonné on copper, bronze, bone spoon. 117.57 grams. Unsigned.

117.58 grams.

€ 250 - 350

**464****China  
Snuff bottle**

H. 9.6 cm. Opal, cut, front representation with people, animals and fish in nature. Bone spoon.

139.06 grams.

€ 150 - 200

**465****China  
Snuff bottle**

H. 7.6 cm. Lacquer, red ('Cinnabar'), carved. Landscape decor with houses; Brass, bone spoon. Indistinctly inscribed in Chinese characters on the bottom.

54.44 grams.

€ 600 - 700



466

**466****China  
Vase**

H. 21 cm. Peking glass, opal yellow cut decor with two birds sitting in a cherry tree. Marked on the bottom: CHINA (engraved).

747 grams.

€ 2.000 - 3.000

**467****China  
Snuff bottle**

H. 9.1 cm. Porcelain, white, glazed, polychrome underglaze with animals, fish and shells. Pink jar lid with bone spoon. Marked: six-character mark (blue, under glaze).

81.47 grams. Glass lid broken in the middle.

€ 500 - 1.000

**468****China  
Snuff bottle**

H. 5.6 cm. Lacquer, with silver and gold, mother-of-pearl inlays. Floral decor. Lacquered wood spoon.

8.44 grams.

€ 250 - 300



467

468

469

470

471

473

**469****China  
Three snuff bottles**

H. 6.1-6.9 cm. Jade, white, green and green-gray, carved with fish and dragons respectively. Spoon made of wood or bone.

57.86 grams; 86.86 grams; 95.48 grams.

Cover of the lightest-colored bottle added.

€ 250 - 300

**470****China  
Snuff bottle**

H. 7.4 cm. Carved brown agate. Glass lid with aventurine inclusion.

129.00 grams. Cover probably replaced. Tiny chips to the rim of the lip.

€ 50 - 100

**471****China  
Three snuff bottles**

H. 6.5-7 cm. Amber brown glass, partially cut. Reverse glass painting with human figures in front of a landscape. Chinese script banners. Red glass lid. Cork stopper.

74.72 grams; 74.61 grams; 61.77 grams.

€ 80 - 100

**472****Fratelli Toso (ATTR.)  
Two smelling salt bottles, c. 1900**

H. 6.1-6.7 cm. Multicolored opaque glass and aventurine, gilded metal mounting with gemstones.

Cf. exh. cat. Galleria Rossella Junck, Murrine e Millefiori, Venice 1998, p. 67, fig. 37-39.

Image online.

€ 150 - 250

**473****Friedrich Wilhelm Spahr,  
Schwäbisch Gmund  
Smelling salt bottle, 1937-40**

H. 6.1 cm. Porcelain, white, glazed, lobster red on-glaze, silver overlay. not rep.

All in all 29.59 grams.

€ 150 - 250



# IMPRESS

## MANAGING DIRECTOR AND AUCTIONEER:

Askan Quittenbaum  
+49 89 273702-113  
a.quittenbaum@quittenbaum.de

## DEPUTY MANAGING DIRECTOR:

Dr. Claudia Quittenbaum  
+49 89 273702-111  
c.quittenbaum@quittenbaum.de

## SPECIALISTS:

Askan Quittenbaum  
+49 89 273702-113  
a.quittenbaum@quittenbaum.de

Faridah Younès M.A.  
+49 89 273702-115  
f.younes@quittenbaum.de

Nadine Becker M.A.  
+49 89 273702-10  
n.becker@quittenbaum.de

## BOOK KEEPING AND CATALOGUE-ORDER:

Annette Ehrenhardt  
+49 89 273702-117  
buchhaltung@quittenbaum.de

Ava Boll  
+49 89 273702-120  
a.boll@quittenbaum.de

## LOGISTIC AND SHIPPING:

Dirk Driemeyer  
+49 89 273702-112  
d.driemeyer@quittenbaum.de

M2 Logistik  
+49 8121 223015  
service@m2logistik.de

Mail Boxes Etc.  
MBE Lippl Business Service  
+49 8131 37 99 132  
antique-muc@mbe-dachau.de

## PHOTOGRAPHS:

Jochen Splett  
Mirco Talircio

## DESIGN:

Daniela Paringer,  
design & print GbR

## PRODUCTION AND PRINT:

Peschke Solutions GmbH,  
München







QUITTENBAUM  
Kunstauktionen München

QUITTENBAUM Kunstauktionen GmbH  
Theresienstrasse 60 · D-80333 Munich  
Phone 089-27 37 02 10 · Fax 089-27 37 02 122  
info@quittenbaum.de · www.quittenbaum.de

