

# ART NOUVEAU ART DECO PART I

Auction 171 A • 14 November 2023



# ART NOUVEAU ART DECO

PART I

AUCTION 171 A

TUESDAY, 14 NOVEMBER 2023

3 P.M.

**PREVIEW:  
THERESIENSTR. 60**

Thursday	9.11.	10 a.m. - 6 p.m.
Friday	10.11.	10 a.m. - 6 p.m.
Saturday	11.11.	1 p.m. - 5 p.m.
Sunday	12.11.	1 p.m. - 5 p.m.
Monday	13.11.	10 a.m. - 6 p.m.

**QUITTENBAUM  
Kunstauktionen GmbH**

Managong Director: Askan Quittenbaum  
Theresienstrasse 60 · D-80333 Munich  
Phone (+49) 89-27 37 02 10  
Fax (+49) 89-27 37 02 122  
E-Mail [info@quittenbaum.de](mailto:info@quittenbaum.de)  
Opening time: Tues-Fri 3 p.m.-6 p.m.  
and by appointment



Mitglied der Initiative  
Datenbank  
kritischer Werke

||| BDK

Bundesverband Deutscher Kunstversteigerer e.V.





1

**1**  
**Gabriel Argy-Rousseau**  
**Small 'Mûres' bowl, 1914**

H. 4.5 cm, Ø 10.2 cm. Pâte de verre, molded, predominantly colorless and honey brown. Inside and outside relief decoration with blackberries. Wall signed: G. ARGY-ROUSSEAU (embossed).  
Cf. Bloch-Dermant, G. Argy-Rousseau, Paris 1990, no. 14.03.  
€ 800 - 1.200



2

**2**  
**Gabriel Argy-Rousseau**  
**'Yellow Flowers' vase, 1920**

H. 12.9 cm. Pâte de verre, translucent glass, molded, mainly colorless, vanilla yellow, orange and green. Signed: G. ARGY-ROUSSEAU (embossed).  
Tiny hole in the wall (manufacturing).  
Bloch-Dermant, G. Argy-Rousseau, Paris 1990, no. 20.11.  
€ 400 - 500



3

**3**  
**Gabriel Argy-Rousseau**  
**'Elephant' paperweight, 1924**

H. 11 cm, 13.8 x 9.8 cm. Pâte de verre, translucent glass, molded, predominantly greenish, yellow and dark blue. Base signed: G. ARGY-ROUSSEAU (embossed).  
Bloch-Dermant, G. Argy-Rousseau, Paris 1990, no. 24.18.  
€ 1.500 - 2.500



4

**4**  
**Gabriel Argy-Rousseau**  
**'Lotus bleu' ashtray, 1924**

H. 4 cm, Ø 9.2 cm. Pâte de verre, molded, predominantly colorless and honey brown. Wall signed: G. ARGY-ROUSSEAU (embossed).  
Bloch-Dermant, G. Argy-Rousseau, Paris 1990, no. 24.14.  
€ 800 - 1.200

5

**Gabriel Argy-Rousseau  
Tischleuchte 'Anemones des Bois', 1920**

Mushroom shape on a round stand with four tapering rods as a shaft. H. 32 cm. Pâte de verre, translucent glass mass, molded, with lightly relieved decoration, mainly violet, green and orange-red. Signed: G ARGY-ROUSSEAU FRANCE (embossed). Wrought iron foot.

Bloch-Dermant, G. Argy-Rousseau, Paris 1990, no. 20.25.

€ 15.000 - 20.000



6

**Gabriel Argy-Rousseau**  
**Vase 'Feuillage moderne', 1925**

H. 21.4 cm. Pâte de verre, molded, predominantly dark blue and violet. Relief decoration with stylized leaves. Signed: G.ARGY-ROUSSEAU (embossed).

Bloch-Dermant, G. Argy-Rousseau, Paris 1990, no. 25.02.

€ 5.000 - 7.000



7

**Gabriel Argy-Rousseau**  
**'Oiseau', 1927**

H. 10.5 cm, 21.3 x 12 cm. Pâte de verre, predominantly purple. Base sign.: G. ARGY-ROUSSEAU (embossed).

Beak reworked a little.

Bloch-Dermant, G. Argy-Rousseau, Paris 1990, no. 27.38.

€ 1.500 - 2.500

7

8

**Gabriel Argy-Rousseau**  
**'Vase sur pied aux fleurs et triangles', 1927**

H. 13 cm, Ø 14.3 cm. Pâte de verre, translucent glass, molded, predominantly colorless, vanilla yellow and dark brown. Wall signed: G. ARGY-ROUSSEAU (embossed).

Bloch-Dermant, G. Argy-Rousseau, Paris 1990, no. 27.08.

€ 2.000 - 3.000

9

**Gabriel Argy-Rousseau**  
**Plaque 'Madonna', c. 1932**

Ø 7.7 cm. Pâte de verre, translucent glass, molded, mainly colorless, ivory white, yellow and dark gray. Signed: ARGY (embossed).

€ 400 - 500



9



8



10

**Gabriel Argy-Rousseau**  
**Two Veilleuses 'Rosettes', 1923**

H. 17.3 cm. Pâte de verre, translucent glass, molded, with lightly relieved decoration, predominantly dark blue, violet and green. Signed: G ARGY-ROUSSEAU (embossed). Wrought iron bases. Each slightly chipped at the upper opening. Bloch-Dermant, G. Argy-Rousseau, Paris 1990, no. 23.15.  
**€ 6.000 - 8.000** (Standard taxation)

11

**Gabriel Argy-Rousseau**  
**Table light 'Floréal', 1925**

H. 31 cm, Ø 18.5 cm. Pâte de verre, translucent glass, molded, with lightly relieved decor, predominantly violet and red. Shade and base signed: G. ARGY-ROUSSEAU (embossed). Silver-plated metal base. Must be re-electrified. Bloch-Dermant, G. Argy-Rousseau, Paris 1990, no. 25.31.  
**€ 20.000 - 24.000** (Standard taxation)





13

12

**Cristallerie de Baccarat, Paris (ATTR.)  
Vase, c. 1900**

H. 29.8 cm. Glass, colorless/violet, optically blown, enameled and gilded plant decoration.

Image online.

€ 200 - 300

13

**Christian Frères et Fils, Meisenthal  
'Sabot de Vénus' martelé vase, 1900-05**

H. 36.3 cm. Cased glass, ruby, clear and ochre. Etched pattern with lady's slippers. Background martelé cut. Engraved tendrils on the lustered foot. Foot signed: D. Christian Meisenthal Lorr (diamond-cut).

Cf. Olland, Verrerie d'Art de Lorraine, Désiré Christian, Dijon 2010, no. 134.

€ 2.000 - 3.000

14

**Christian Frères et Fils, Meisenthal  
Vase 'Ancholies', c. 1898-1907**

H. 18.7 cm. Cased glass, colorless, opal green and violet. Etched decor with columbines in a twilight mood, partially reworked with the wheel. Bottom signed: D. Christian Meisenthal Lothar (engraved).

Olland, Verrerie d'Art de Lorraine, Désiré Christian, Dijon 2010, No. 120.

€ 1.200 - 2.200



14



15

15

**Christian Frères et Fils, Meisenthal  
'Liserons' Marqueterie vase, c. 1900**

H. 32.8 cm. Cased glass, milky opalescent, clear and opal amber. Etched pattern, reworked with the wheel, bindweed of blue Marqueterie (*Hypomea volubilis*). Signed: D. Christian Meisenthal Loth. (diamond-cut).

Traub, The Glass of Désiré Christian-Ghost for Gallé, Chicago 1978, no. 15; cat. Sotheby's/Parke Bernet, New York 1980, no. 245; cf. exh. cat. Nancy 1900, Munich municipal museum, Munich 1980, no. 392 (shape).

€ 2.000 - 3.000

16

**Christian Frères et Fils, Meisenthal  
'Nymphéas' vase, c. 1900**

H. 32.7 cm. Made for Focke & Meltzer, Amsterdam. Cased glass, pale blue, clear and amber. Etched pattern, Waterlilies, one large flower reworked with the wheel. Signed: DAFC, cross of Lorraine, pr. Focke & Meltzer (diamond-cut).

Olland, Verrerie d'Art de Lorraine, Désiré Christian, Dijon 2010, No. 126.

€ 1.500 - 2.500



16



17

17

**Jean Cros  
Ceiling light 'Fruits et Légumes', c. 1920**

H. 13.5 cm, 40 x 40 cm (corpus). Pâte de verre, polychrome powder fusion. Decorated in relief with fruits and vegetables. Unsigned. Wrought iron mounting.

Central lower plate with cracks.

€ 2.500 - 3.500

18

**Pierre D'Avesn, Croismare  
Vase 'Poissons Saint-Pierre', c. 1930**

H. 27.5 cm. Clear pressed glass, satin finish, relief decoration with Saint Peter's fish, bluish patina. Relief signature on the bottom: P. D'AVESN (indistinct).

€ 1.000 - 1.500



18

19

**Daum Frères, Nancy**  
**Vase 'Je meurs où je m'attache', c. 1892**

H. 12 cm. Cased glass, colorless and green. Etched decoration with ivy tendrils, heightened with gold. Inscribed: 'Je meurs où je m'attache'. Rough background. Bottom signed: Daum Nancy, Cross of Lorraine (gold signature).

Cf. Daum, *Maitres Verriers*, Lausanne 1980, p. 43.

€ 700 - 900



19

20

**Daum Frères, Nancy**  
**'Gui' vase, c. 1895**

H. 13 cm. Cased glass, colorless, slightly yellowish and opal white. Etched, gilded and enameled. Decor with mistletoe. Signed on the bottom: Daum Nancy, Cross of Lorraine (gold signature).

Cf. Cat. Daum, *Collection du Musée des Beaux-Arts de Nancy*, Paris 2000, No. 212, another vase with this decor.

€ 600 - 800

21

**Daum Frères, Nancy**  
**'Chardons' vase, c. 1896**

'Boule cabossée'. H. 7 cm. Cased glass, colorless, opal white and yellowish. Etched, engraved and gilded. Decor with flowering thistles on a rough background.

Cf. Hilschenz-Mlynek/Ricke, *Hentrich Glass Collection*, Kunstmuseum Düsseldorf, Munich 1985, No. 38.

€ 500 - 700



20



21

22

**Daum Frères, Nancy**  
**Small Vase 'Eglantine et Papillon', c. 1898**

H. 9 cm. Cased glass, colorless, green and rust-colored powder inclusions. Etched and heightened with gold, decor with dog roses and butterflies. Signed on the bottom: Daum Nancy, Cross of Lorraine (gold signature).

Image online.

€ 350 - 450

23

**Daum Frères, Nancy**  
**Small vase with fruit blossoms, c. 1898**

H. 9.9 cm. Cased glass, colorless, milk white, violet and dark green. Etched decoration with fruit blossom. Signed on the bottom: DAUM, Cross of Lorraine, NANCY (engraved).

€ 1.200 - 1.500



23

24

**Daum Frères, Nancy**  
**Solifor 'Delft', 1899**

H. 10.7 cm. Cased glass, milky opalescent and colorless. Etched. Black solder painting. Motif of a Dutch coastal landscape with a village, windmill and sailing boats. Traces of the signature on the bottom: Daum Nancy, Cross of Lorraine.

Cf. Bardin, *Daum Une industrie d'art lorraine*, Metz 2004, p. 161, reproduction of an archive photo of the manufactory.

Image online.

€ 300 - 400

25

**Daum Frères, Nancy**  
**'Delft' vase, 1899**

H. 16.7 cm. Cased glass, milky opalescent and colorless. Etched. Black solder painting. Motif of a Dutch coastal landscape with a windmill and sailing boats. Signed on the bottom: DAUM NANCY, Cross of Lorraine (black solder).

Small flat chip on the stand.

Cf. Bardin, *Daum Une industrie d'art lorraine*, Metz 2004, p. 161, reproduction of an archive photo of the manufactory.

€ 600 - 800



25

26

**Daum Frères, Nancy**  
**Miniature 'Delft' vase with handles, 1899**

H. 4.8 cm. Cased glass, milky opalescent and colorless. Etched. Black solder painting. Motif of a Dutch coastal landscape with a farm, windmills and sailing boats. Signed on the bottom: Daum Nancy, Cross of Lorraine (gold signature).

Cf. Bardin, *Daum Une industrie d'art lorraine*, Metz 2004, p. 161, reproduction of an archive photo of the manufactory.

€ 300 - 400

27

**Daum Frères, Nancy**  
**Miniature vase 'Delft', 1899**

H. 6.7 cm. Cased glass, milky and colorless. Etched. Black solder painting. Motif of a Dutch coastal landscape with a farm, windmill and sailing boats. Signed on the bottom: Daum Nancy, Cross of Lorraine (black solder).

Cf. Bardin, *Daum Une industrie d'art lorraine*, Metz 2004, p. 161, reproduction of an archive photo of the manufactory.

Image online.

€ 250 - 350

28

**Daum Frères, Nancy**  
**Miniature vase 'Delft', 1899**

H. 6 cm. Cased glass, milky opalescent and colorless. Etched. Black solder painting. Motif of a Dutch coastal landscape. Signed on the bottom: Daum Nancy, Cross of Lorraine (gold signature).

Cf. Bardin, *Daum Une industrie d'art lorraine*, Metz 2004, p. 161, reproduction of an archive photo of the manufactory.

Image online.

€ 250 - 350



26





29

**29**

**Daum Frères, Nancy  
Miniature vase 'Coquelicot et Bleuets', c. 1900**

H. 4.9 cm. Cased glass, colorless, lemon yellow and rust-brown powder inclusions in the lower wall area, etched, enameled, heightened with gold and rubbed with gold in the lower area. Meadow landscape with blooming poppies and blooming cornflowers in the light of the setting sun. Signed on the bottom: Daum Nancy, Cross of Lorraine (gold signature).  
**€ 500 - 600**

**30**

**Daum Frères, Nancy  
Tall 'Martelé'-Vase 'Bleuets', 1900-03**

H. 29 cm. Cased glass, milky opalescent, colorless, violet and green. Etched decor with cornflowers, the background reworked in martelé cut. Signed on the bottom: DAUM NANCY, Cross of Lorraine (engraved).  
**€ 2.000 - 2.400**



30



31

**31**

**Daum Frères, Nancy  
Tall 'Magnolias' vase, 1900-05**

H. 28 cm. Cased glass, colorless, pink and opalescent powder inclusions, amber and brown enamel fusions. Etched decor with blooming magnolias. Signed: DAUM NANCY, Cross of Lorraine (raised).  
Cf. Cat. Collection Daum, Tokyo 1987, No. 123.  
**€ 2.500 - 3.500**



32

**32**

**Daum Frères, Nancy  
Two wall lights, 1900-10**

H. 35 cm. Cased glass, colorless, orange powder inclusions, matted. Signed: DAUM NANCY, Cross of Lorraine, FRANCE (needle etching). Gold-plated metal mounting decorated with cherry branches. Signed: T. DEMARCO (embossed).  
**€ 1.200 - 1.500**



34



35

33

**Daum Frères, Nancy**  
**Miniature vase 'Paysage d'Hiver', c. 1902**

H. 3.7 cm. Cased glass, colorless, yellow, orange and brownish powder inclusions. Etched background. Decor painted with black solder and white enamel with a wintry forest landscape, snow-covered trees in the light of the setting sun. Signed on the bottom: Daum Nancy, Cross of Lorraine (black solder).

Image online.

€ 300 - 400

34

**Daum Frères, Nancy**  
**Small 'Crépuscule neige' or 'Paysage d'hiver' vase, c. 1902**

H. 12.5 cm. Cased glass, colorless, with yellow, orange and dark brown powder inclusions. Etched décor, enameled white, heightened with black solder. Wintry forest landscape, snow-covered trees in the changing light of the setting sun. Signed on the bottom: Daum Nancy, Cross of Lorraine (black solder).

€ 1.500 - 2.500

35

**Henri Bergé**  
**Bowl 'Vigne à l'automne', 1903-04**

H. 6.5 cm, Ø 12.2 cm. Execution: Daum Frères, Nancy. Cased glass, colorless, yellowish and violet powder inclusions, red, orange and dark blue fusions (vitrifications). Etched decor with autumnal vines. Signed: DAUM NANCY, Cross of Lorraine (raised). Exh. cat. Centenaire de Daum au Japon, Hokkaido, 1980, No. 32, dated 1903; Exh. cat. Daum verre et cristal, Nancy 1980, No. 32; Ricke/Schmitt, Gerda Koepff Glass Collection, Kunstmuseum Düsseldorf, Munich 1998, No. 105 (sketch).

€ 1.200 - 1.600

36

**Daum Frères, Nancy**  
**Miniature vase 'Nil', 1905**

H. 4 cm. Cased glass, colorless, milky opalescent powder inclusions. Etched and enameled. Depiction of the palm-lined banks of the Nile and temple architecture. Signed on the bottom: DAUM NANCY, cross of Lorraine (black solder), painter's monogram L.

Cf. Bardin, Daum Une industrie d'art lorraine, Metz 2004, p. 165, reproduction of the company table from the archive of the manufacture.

Image online.

€ 300 - 400

37

**Daum Frères, Nancy**  
**Miniature vase 'Nil', 1905**

H. 5.5 cm. Cased glass, colorless, milky opalescent powder inclusions. Etched and enameled. Representation of the palm-lined banks of the Nile and temple architecture. Signed on the bottom: DAUM NANCY, Cross of Lorraine, 545 (black solder).

Image online.

€ 250 - 350

38

**Daum Frères, Nancy**  
**Miniature bowl 'Nil', 1905**

H. 3 cm. Cased glass, colorless, milky opalescent powder inclusions. Etched and enameled. Representation of the palm-lined banks of the Nile and temple architecture. Bottom signed: DAUM NANCY, Cross of Lorraine (enameled).

Image online.

€ 300 - 400



39

39

**Daum Frères, Nancy**  
**'Cérisés' Vase, 1905-10**

H. 20.6 cm. Cased glass, colorless, opal white and amber powder inclusions, red, green and brown enamel fusions (Vitrifications). Etched decoration with cherry branches, three fruits as applied red cabochons. Signed on the bottom: Daum Nancy, Cross of Lorraine (engraved).

Cf. Cat. Collection Daum, Paris 2004, no. 198.

€ 2.000 - 2.500

40

**Daum Frères, Nancy**  
**'Montbretias' vase, 1905-10**

H. 8 cm. Execution: Daum Frères, Nancy. Cased glass, colorless, with milk white, light yellowish, amber powder inclusions in the lower wall area. Etched and enameled decor with flowering Montbretia (Crocsmia crocosmiflora) on a rough background. Signed: DAUM NANCY, Cross of Lorraine, FRANCE (enameled).

Bardin, Daum une industrie d'art Lorraine, Metz 2004, p. 91 (design drawing by Henri Bergé).

€ 800 - 1.200

41

**Daum Frères, Nancy**  
**'Arnica' vase, 1905-10**

H. 12 cm. Cased glass, colorless, deep purple, milk white, yellowish, pink and amber powder inclusions in the lower area. Etched and enameled decoration with flowering arnica. Signed: DAUM NANCY, Cross of Lorraine (enameled).

€ 1.200 - 1.600



40

40

40

40

40

40

40

40

40

40

40

40

40

40

40

40

40

40

40

40

40

40

40

40

40

40

40

40

40

40

40



42



43

**42**  
**Daum Frères, Nancy**  
**Miniature bowl 'Violettes des Bois', c. 1905**

H. 2.9 cm. Cased glass, colorless, milk white, deep purple powder inclusions in the lower area. Etched, enameled and heightened with gold. Decor with blooming violets. Signed: Daum Nancy, Cross of Lorraine (raised).

€ 500 - 600

**43**  
**Daum Frères, Nancy**  
**Miniature bowl 'Violettes', c. 1900**

H. 2.9 cm. Cased glass, colorless, milk whitish and blue powder inclusions in the lower area. Etched and finely painted decor with blooming violets. Signed: DAUM NANCY, Cross of Lorraine (raised). Hilschenz-Mlynek/Ricke, Hentrich Glass Collection, Kunstmuseum Düsseldorf, 1985, No. 71; Büttiker, Daum Nancy, Zurich 2000, p. 28 f. (decor).

€ 500 - 600

**44**  
**Daum Frères, Nancy**  
**Miniature vase 'Paysage lacustre', c. 1905**

H. 5.3 cm. Cased glass, colorless and opalescent white. Enameled décor of a bank landscape enhanced with black solder. Signed on the bottom: DAUM, Cross of Lorraine, Nancy (black solder).

Image online.

€ 250 - 350

**45**  
**Daum Frères, Nancy**  
**Miniature vase 'Paysage lacustre', c. 1905**

H. 5.1 cm. Colorless glass, orange powder inclusions, pink enamel fusions. Etched decoration heightened with black solder. Motif of a tree-lined meadow landscape, gilded lip edge. Signed on the bottom: DAUM NANCY, cross of Lorraine, two dots (enameled).

Image online.

€ 250 - 350

**46**  
**Daum Frères, Nancy**  
**Vase 'Paysage d'Automne', c. 1905**

H. 20 cm. Cased glass, colorless, whitish, orange and in the lower area dark purple powder inclusions, yellow, brown and green enamel fusions (Vitrifications). Etched decor, impressionistic landscape with autumnal trees. Signed on the bottom: Daum Nancy, Cross of Lorraine (engraved).

Cf. Daum, Collection du Musée des Beaux Arts de Nancy, 2000, No. 274, similar decor.

€ 2.500 - 3.500



46

**47**  
**Henri Bergé**  
**'Crocus' Marqueterie vase, c. 1905**

H. 21.4 cm. Made by Daum Frères, Nancy. Cased glass, clear and green, milk white powder inclusions. Reworked with the wheel. Flowers as applied Marqueterie (Plaquettes ciselées) in different kinds of colors. Martelé background. Signed: Daum Nancy, cross of Lorraine.

Cf. Ricke/Schmitt, Glass coll. Gerda Koepff, Kunstmuseum Düsseldorf, 1989, no. 108.

€ 2.000 - 3.000



47



48

**48**  
**Daum Frères, Nancy**  
**'Venise' bowl, c. 1905**

H. 7.6 cm. Cased glass, colorless, light blue, amber and yellowish powder inclusions. Etched and enameled decor heightened with black solder. Landscape motif seen from the lagoon of the panorama of Venice, in the foreground barges, in the back numerous sailing boats. Signed on the bottom: DAUM NANCY, Cross of Lorraine (black solder).

€ 2.500 - 3.500

**49**  
**Daum Frères, Nancy**  
**Vide-poches 'Ancolies', 1910**

Ø 13.5 cm. Cased glass, colorless with yellow and deep purple powder inclusions. Etched and enameled motif with flowering columbine. Signed: DAUM NANCY, Cross of Lorraine (raised).

€ 800 - 1.200



49



50

**50**  
**Daum Frères, Nancy**  
**Vase 'Ronces d'Automne et insectes', 1910-15**

H. 24.5 cm. Cased glass, colorless and opal white, reddish and yellowish powder inclusions, enamel fusions in autumnal colors, brown with green dots. Etched decor with autumn thorn branches. A red and a green cabochon as beetles. Signed on the bottom: DAUM NANCY, Cross of Lorraine (engraved).

€ 3.000 - 4.000

**51**  
**Daum Frères, Nancy**  
**'Solanées' vase, 1910-15**

H. 14 cm. Cased glass, colorless, yellowish, pink and green powder inclusions. Etched and enameled decor with tendrils of bitter-sweet nightshade, rough background. Signed: DAUM NANCY, Cross of Lorraine FRANCE (raised).

€ 2.000 - 3.000

**52**  
**Daum Frères, Nancy**  
**Bowl 'Paysage lacustre nocturne', 1910-15**

H. 6.3 cm, Ø 12.6 cm. Cased glass, colorless and deep purple with yellow and light blue powder inclusions. Etched motif of a nighttime lake landscape all around. Signed: DAUM NANCY, Cross of Lorraine (raised).

€ 900 - 1.200



52



51

**53**  
**Daum Frères, Nancy**  
**Bowl 'Laurier rose', 1910-15**

H. 6.6 cm, Ø 13.2 cm. Cased glass, colorless, with fluffy orange and lemon-yellow powder inclusions. Etched and enameled decoration of flowering oleander over a slightly rough background. Signed: DAUM NANCY, Cross of Lorraine (raised). Signed on the bottom: M (black solder, handwritten).

€ 1.400 - 1.800



53



54

**54**  
**Henri Bergé, Amalric Walter**  
**'Papillon de Nuit' paperweight, c. 1910**

H. 4.7 cm, Ø 10.6 cm. Execution: Daum Frères, Nancy. Pâte de verre, translucent glass, molded, predominantly amber brown, yellow, reddish brown and blue fusions. Signed DAUM, Cross of Lorraine, NANCY (engraved).

Cf. Le Tacon/Hurstel, Amalric Walter, Metz 2013, p. 53.

€ 700 - 900

**55**  
**Daum Frères, Nancy**  
**'Crete de coq' table light, c. 1910**

H. 38 cm, Ø 21 cm. Cased glass, colorless, yellow and orange powder inclusions, polychrome enamel. Etched decoration with cockscomb and grass. Shade signed: DAUM NANCY, Cross of Lorraine; Foot: DN, Cross of Lorraine (raised). Wrought iron mounting, blackened.

€ 3.000 - 4.000



55

**56**

**Daum Frères, Nancy**  
**Two small vases, c. 1910**

H. 10-12.8 cm. Cased glass, polychrome powder inclusions and fusions. Signed: DAUM, Cross of Lorraine, NANCY (engraved).

Image online.

€ 250 - 350

**57**

**Daum Frères, Nancy**  
**'Physalis' vase, 1910**

H. 12 cm. Cased glass, colorless, orange, green and brown powder inclusions. Etched and enameled decoration with lantern flowers (Physalis). Signed: DAUM NANCY, Cross of Lorraine, FRANCE (raised).

€ 1.200 - 1.600



57

**58**

**Daum Frères, Nancy**  
**'Ancolies' bowl, c. 1910**

H. 8.3 cm, Ø 19.2 cm. Cased glass, colorless, yellowish and violet powder inclusions. Etched and enameled decoration with flowering columbine. Signed: DAUM NANCY, Cross of Lorraine FRANCE (raised). Remains of a label on the bottom.

Cf. Cat. Collection Daum, Paris 2004, No. 133.

€ 1.300 - 1.600

**59**

**Daum Frères, Nancy**  
**Vase 'Cognassier du Japon', c. 1910**

H. 27.5 cm. Cased glass, colorless, with yellowish and brownish powder inclusions. Etched and enameled decor with flowering ornamental quince branches on a rough background. Signed: DAUM NANCY, Cross of Lorraine, FRANCE (raised).

€ 1.500 - 2.500



58



59

60

**Daum Frères, Nancy**  
**Small table light 'Epine Vinette', c. 1910**

H. 14 cm. Cased glass, colorless, whitish and brown powder inclusions. Etched and enameled decor with barberry branches. Signed: DAUM NANCY, Cross of Lorraine, FRANCE (raised). Gold-plated metal mounting.

Small chips to the lip covered by the mounting.

Cf. Cat. Daum Collection, Tokyo 1987, No. 93; Cat. Collection Daum, Christie's, Paris 2004, No. 124 and 125 vases with the same decor, dated 1913.

€ 600 - 800



60

61

**Daum Frères, Nancy**  
**Vase 'Paysage lacustre', c. 1910**

H. 16 cm. Cased glass, colorless, with powder inclusions in raspberry red, yellow and orange. Etched decor with a tree-lined meadow landscape. Signed: DAUM NANCY, Cross of Lorraine (raised).

€ 1.200 - 1.600

62

**Daum Frères, Nancy**  
**Vase 'Paysage lacustre', c. 1910**

H. 9.6 cm. Cased glass, colorless, powder inclusions, opal white, yellow, raspberry red and green. Etched decor with a tree-lined meadow landscape. Signed: Daum Nancy, Cross of Lorraine (raised).

€ 800 - 1.200



61



62



63

63

**Daum Frères, Nancy**  
**Vase 'Pois de Senteur', 1910**

H. 12.2 cm. Cased glass, colorless, milk white and orange powder inclusions. Etched and enameled decor in green and pink with flowering sweet pea tendrils. Signed: DAUM NANCY, Cross of Lorraine (raised).

€ 1.200 - 2.200



64

64

**Daum Frères, Nancy**  
**'Ancolies' vase, c. 1910**

H. 11.9 cm. Cased glass, colorless with yellow and deep purple powder inclusions. Etched and enameled motif with flowering columbine. Signed: DAUM NANCY, Cross of Lorraine (raised). Bottom marked: NG, Cross of Lorraine (green enamel).

€ 1.500 - 2.500



65

65

**Daum Frères, Nancy**  
**'Ancolies' vase, c. 1910**

H. 10.7 cm. Cased glass, colorless with yellow and deep purple powder inclusions. Etched and enameled motif with flowering columbine. Signed: DAUM NANCY, Cross of Lorraine (raised).

€ 1.500 - 2.500

66

**Daum Frères, Nancy**  
**'Ancolies' vase, c. 1910**

H. 14.8 cm. Cased glass, colorless with yellow and deep purple powder inclusions. Etched and enameled motif with flowering columbine. Signed: DAUM NANCY, Cross of Lorraine (raised).  
**€ 1.500 - 2.500**



66



67

**67**  
**Daum Frères, Nancy**  
**'Eucalyptus' table light, c. 1912**

H. 37 cm. Lamp shade in cased glass, colorless, red and green, with yellow and red powder inclusions. Etched decor with eucalyptus branches with flowers and fruits. Signed: DAUM NANCY, Cross of Lorraine (engraved). Cast brass.  
**€ 1.000 - 1.400**

**68**  
**Daum Frères, Nancy**  
**Vase 'Monnaie du Pape', c. 1912/13**

H. 15.9 cm. Cased glass, clear, opal white, pink and green. Etched decor with pope's money on a rough background; Leaves coated pearlescent, gilded. Lip gold plated. Signed on the bottom: Daum, Cross of Lorraine, Nancy (gold signature).  
**€ 1.500 - 2.000**



68

69

**Daum Frères, Nancy**  
**'Bignones' centerpiece, c. 1912**

H. 16 cm, Ø 19 cm. Cased glass, colorless and dark wine red, orange powder inclusions. Etched decor with tendrils of the trumpet flower, two open flowers and four buds reworked in high cut, towards the mouth in martelé cut. Stand signed: DAUM, Cross of Lorraine, NANCY (engraved).  
Cf. Cat. Daum, the Collection of the Musée des Beaux Arts de Nancy, 2000, No. 350.  
**€ 1.500 - 2.500**



69

70

**Daum Frères, Nancy**  
**Table light, c. 1920**

H. 38.5 cm. Cased glass, colorless, red and orange powder inclusions, matted. Signed: DAUM, Cross of Lorraine, Nancy (engraved). Polished bronze base.  
**€ 900 - 1.200**

71

**Daum Frères, Nancy**  
**Vase with handles, c. 1922**

H. 25 cm. Cased glass, colorless and vanilla yellow, applied handles dark pink. Signed on the wall above the base: DAUM, Cross of Lorraine, NANCY (engraved and rubbed out).  
Cf. Cat. Collection Daum, Christie's, Paris 2004, nos. 951-955. Image online.  
**€ 100 - 150**

72

**Verrerie de Belle-Etoile Daum et Cie., Croismare;**  
**Edgar Brandt, Nancy**  
**Table light, c. 1925**

H. 33 cm, Ø 10.3 cm. Cased glass, colorless, polychrome powder inclusions, matted. Signed: Lorrain (enameled). Wrought iron base, brown patina, by Edgar Brandt. Signed: E.BRANDT (embossed).  
Lampshade damaged. Must be re-electrified.  
**€ 650 - 850** (Stadard taxation)



70



73

**73**  
**Francois Decorchemont, Conches**  
**'Coupe plate trois Sirènes', 1912**

Ø 21 cm. Pâte de verre, translucent glass, molded, blue powder inclusions and dark green powder fusions. Relief decoration with a wreath made of seaweed, three women's faces and shells. Signed: shell-shaped workshop signet FDECORCHEMONT (embossed). Cf. Ayroles, François Décorchemont, Paris 2006, p. 58 (exh. Salon des Artistes français, 1912, p. 64, Model no. 10).

€ 1.500 - 2.500



74

**74**  
**Francois Decorchemont, Conches**  
**Bowl with handles, c. 1913**

H. 7.7 cm. Pâte de verre, translucent glass, molded, predominantly vanilla yellow powder inclusions. Stylized floral decor. Signed: shell-shaped workshop signet FDECORCHEMONT (embossed). Bottom marked: 470 (engraved).

Cf. Ayroles, François Décorchemont, Paris 2006, p. 94 (plaster model).

€ 1.600 - 2.600



75

**75**  
**Francois Decorchemont, Conches**  
**'Coupe Sapins', 1913**

H. 6.8 cm, Ø 11.5 cm. Pâte de verre, translucent glass, molded, predominantly dark blue powder inclusions. Stylized pine needle decor. Signed: horseshoe-shaped workshop signet FDECORCHEMONT (embossed). Bottom marked: L 70 (engraved).

Glass very bubbled.

Cf. Ayroles, François Décorchemont, Paris 2006, No. 51.

€ 1.500 - 2.500



76

**76**  
**Francois Decorchemont, Conches**  
**Small bowl 'Nervures', 1920**

H. 5.8 cm, Ø 8.9 cm. Pâte de verre, translucent glass, molded, predominantly green powder inclusions. Stylized rib decor. Signed: shell-shaped workshop signet FDECORCHEMONT (embossed). Bottom marked: 430 (engraved).

Ayroles, François Décorchemont, Paris 2006, No. 116 (identical).

€ 1.200 - 2.200

**77**  
**Francois Decorchemont, Conches**  
**'Coupe fruits', 1924**

H. 8 cm, Ø 16.5 cm. Pâte de verre, translucent glass, molded, predominantly blue powder inclusions. Relief decoration with fruits and leaves. Signed: shell-shaped workshop signet FDECORCHEMONT (embossed). Bottom marked: A 516 (engraved).

Chipped edges, uneven bottom.

Ayroles, François Décorchemont, Paris 2006, No. 240 (identical).

€ 2.500 - 3.500

**78**  
**Francois Decorchemont, Conches**  
**'Gobelet aux masques carrés', 1925**

H. 8.9 cm. Pâte de verre, translucent glass, molded, predominantly blue powder inclusions. Square structured ribbon with two horned masks below the lip. Signed: shell-shaped workshop signet FDECORCHEMONT (embossed). Bottom marked: A 440 (engraved).

Floor slightly uneven in one place.

Cf. Ayroles, François Décorchemont, Paris 2006, no. 276.

€ 2.500 - 3.500



77



78





79

**79**  
**Francois Decorchemont, Conches**  
**'Coupe intérieur frise et rosaces', 1926**

H. 6.1 cm, Ø 14.4 cm. Pâte de verre, translucent glass, molded, predominantly blue and violet powder inclusions. Stylized tendril decoration, grooves in the lower wall area. Signed: shell-shaped workshop signet FDECORCHEMONT (embossed). Bottom marked: a 890 (engraved).

Cf. Ayroles, François Décorchemont, Paris 2006, No. 232.

€ 1.800 - 2.800



80



82

**80**  
**Francois Decorchemont, Conches**  
**Small bowl with base, 1927**

H. 7.5 cm, Ø 11 cm. With base: H. 14.3 cm. Pâte de verre, translucent glass, molded, green and brown powder inclusions. Stylized relief decoration with leaves. Signed: shell-shaped workshop signet FDECORCHEMONT (embossed). Bottom marked: A 980 (engraved). Base made of wood, painted black.

€ 900 - 1.200

**82**  
**Francois Decorchemont, Conches**  
**'Coupe marli à pans', 1927**

H. 9.1 cm, 22.5 x 22.7 cm. Pâte de verre, translucent glass, molded, predominantly blue powder inclusions. Stylized rib decor. Signed: shell-shaped workshop signet FDECORCHEMONT (embossed). Bottom marked: B 183 (engraved).

Ayroles, François Décorchemont, Paris 2006, No. 342 (identical).

€ 3.000 - 4.000



81

**81**  
**Francois Decorchemont, Conches**  
**'Grand Bol deux anses fleurs', 1927**

H. 16.8 cm. Pâte de verre, translucent glass, molded, predominantly green powder inclusions. Stylized rib decoration, stylized floral handles. Signed: shell-shaped workshop signet FDECORCHEMONT (embossed). Bottom marked: B 85 327 (engraved).

Chips to the bottom.

Cf. Ayroles, François Décorchemont, Paris 2006, no. 326.

€ 4.500 - 5.500



83

**83**  
**Francois Decorchemont, Conches**  
**'Gobelet nervures triangle', 1928**

H. 12 cm. Pâte de verre, translucent glass, molded, predominantly brown and violet powder inclusions. Rib decor. Signed: shell-shaped workshop signet FDECORCHEMONT (embossed).

Ayroles, François Décorchemont, Paris 2006, no. 366 (identical).

€ 2.200 - 3.200

**84**  
**Francois Decorchemont, Conches**  
**'Bol encoches', 1929**

H. 6.8 cm, Ø 13.8 cm. Pâte de verre, translucent glass, molded, predominantly green powder inclusions. Stylized olive cut. Signed: shell-shaped workshop signet FDECORCHEMONT (embossed). Bottom marked: B 802 (engraved).

Cf. Ayroles, François Décorchemont, Paris 2006, No. 397.

€ 1.800 - 2.800

**85**  
**Francois Decorchemont, Conches**  
**Ash tray, c. 1930**

H. 4.6 cm, 17.8 x 14.2 cm. Pâte de verre, translucent glass, molded, predominantly dark blue and orange-brown powder inclusions. Signed: shell-shaped workshop signet FDECORCHEMONT (embossed). Bottom marked: C 401 (engraved). Chips, open air bubbles, one polished handle.

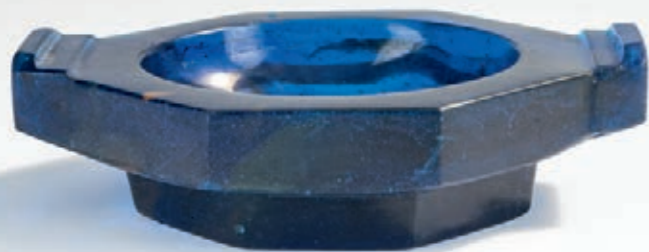
€ 1.500 - 2.500

**86**  
**Francois Decorchemont, Conches**  
**Ashtray, c. 1931**

H. 2.9 cm, 8.5 x 6.5 cm. Pâte de verre, translucent, molded, included streaks in shades of green, polished. Signed: Round mark (embossed).

Image online.

€ 350 - 450



85

**87**  
**Francois Decorchemont, Conches**  
**'Bol taillé', c. 1931**

H. 8.6 cm, Ø 9.1 cm. Pâte de verre, translucent glass, molded, predominantly amber brown and dark purple powder inclusions. Structured lengthwise. Signed: shell-shaped workshop signet FDECORCHEMONT (embossed).

Floor with splinters (open air bubbles).

Cf. Ayroles, François Décorchemont, Paris 2006, No. 451.

€ 1.500 - 2.500

**88**  
**Francois Decorchemont, Conches**  
**'Bol taillé', c. 1931**

H. 8.6 cm, Ø 9.1 cm. Pâte de verre, translucent glass, molded, predominantly caramel brown powder inclusions. Structured lengthwise. Signed: shell-shaped workshop signet FDECORCHEMONT (embossed). Bottom marked: faint numbering (engraved).

Cf. Ayroles, François Décorchemont, Paris 2006, No. 451.

€ 1.500 - 2.500



87



88



89

**Francois Decorchemont, Conches  
'Bol ovale petits pans', 1933**

H. 13.3 cm. Pâte de verre, translucent glass, molded, predominantly opal white and pink powder inclusions. Signed: shell-shaped workshop signet FDECORCHEMONT (embossed). Bottom marked: C 407 (engraved).

Ayroles, François Décorchemont, Paris 2006, No. 502 (identical).

€ 3.000 - 4.000

90

**Francois Decorchemont, Conches  
'Coupe ovale plissée', 1940**

H. 4.8 cm, 18.5 x 11.5 cm. Pâte de verre, translucent glass, molded, predominantly brownish powder inclusions. Signed: shell-shaped workshop signet FDECORCHEMONT (embossed). Bottom marked: C 22 PH 6-2-1940 FD (engraved).

Cf. Ayroles, François Décorchemont, Paris 2006, No. 443 (drawing, 1930).

€ 1.500 - 2.500



90



91

91

**Francois Decorchemont, Conches  
Portrait relief, c. 1950**

25 x 19 cm. Pâte de verre, translucent glass, molded, predominantly opal white and pink powder inclusions in porous earthenware. Signed on the back: F. DECORCHEMONT. Dedication: A MII le Doyen CHAVANTRE en souvenir de Pierre L'Hermite et de l'auteur (engraved).

€ 1.200 - 2.200

92

**André Delatte, Nancy  
Vase 'Paysage, oiseau', 1920s**

H. 22.3 cm. Cased glass, colorless, yellow and violet. Etched decor with trees and a bird. Foot signed: ADELATTE NANCY (embossed).

€ 2.000 - 3.000



92



93

**93**  
**Emile Gallé, Nancy**  
**18 knife rests, 1880s**

L. 7.6-11.4 cm. Faïence, polychrome glaze.  
 Some signed in different styles.  
**€ 2.000 - 3.000**



96

**94**

**Emile Gallé, Nancy**  
**Historicism goblet, c. 1883**

H. 16.4 cm. Colorless glass. Wall structured by beaded rings with eight attached rosette nubs. Almost all-over etched decoration of leaf and flower tendrils, partially enameled and gilded. Signed in the polished outline: E. Gallé Nancy (diamond-cut).

**€ 2.000 - 3.000**

**95**

**Emile Gallé, Nancy**  
**Small Vase 'Ophrys apifera et Orchis', 1890-94**

Rolled sheet. H. 15.5 cm. Execution in Meisenthal. Green glass, pink powder inclusions. Etched and enameled decoration with ragwort (*Ophrys apifera*), two pistils as applied cabochons, etched panicles of orchid (*Orchis*), partially violet. Signed on the bottom: Cristallerie d'E Gallé Nancy modèle et décor déposés (needle etching).

Hilschenz-Mlynek/Ricke, Hentrich Glass Collection, Kunstmuseum Düsseldorf, Munich 1985, No. 223, with reproduction of the decorative stencils.

**€ 2.500 - 3.500**

**96**

**Emile Gallé, Nancy**  
**Flacon 'Pissenlit et Libellule', c. 1891**

H. 10.5 cm. Amber-brown glass, optically blown, three elongated teardrops applied. Enameled decoration with dandelions in different stages of growth and a dragonfly. Bottom signed: Emile Gallé forme et décor déposés with dandelion (needle etching), 91 (engraved).

Stopper lost. One applied drop restored.

**€ 700 - 900**



94



95

97



**97**  
**Emile Gallé, Nancy**  
**'Sabot de Venus et Coprins' bowl,**  
**1892**

H. 16.7 cm, Ø 25.5 cm. Green glass. Etched, enameled and heightened with gold. Decor with woman's slippers. Signed on the bottom: elaborate signature with crested ink and oak leaves: Emile Gallé delt ft (delineavit et fecit) Série C déposé (etched and gilded lettering, partly in etched ink).

Cf. Exh. cat. Meisenthal Berceau du verre Art nouveau, Meisenthal 1999, No. 32; Hilschensch-Mlynek/Ricke, Glass coll. Hentrich, Kunstmuseum Düsseldorf, München 1985, p. 175.

€ 1.200 - 2.200

**98**  
**Emile Gallé, Nancy**  
**3-piece Toiletry set, 'Aron', 1895-**  
**1900**

H. 2.7-7.1 cm. Cased glass, milky opalescent and clear. Marqueterie intercalaire, combed, pink, amber and dark brown. Engraved pattern. Calla flowers and leaves. Signed: Gallé (raised).

Tension tears inside.

Cf. Hilschensch-Mlynek/Ricke, glass coll. Hentrich, Kunstmuseum Düsseldorf 1984, no. 193.

€ 1.500 - 2.500

98



38

**99**  
**Emile Gallé, Nancy**  
**Tall vase 'Echinacee', c. 1895**

H. 45 cm. Smoke-brown glass, optically blown. Etched, enameled and gilded. Decor in an autumnal mood with blooming coneflowers. Signed: Gallé (raised and gilded).

Cf. Cat. Art Nouveau, Mainz State Museum, Mainz 1900, No. 94, already exhibited in: Exh. cat. Nancy 1900, Munich City Museum, Mainz 1980, No. 285 (not illustrated).

€ 5.000 - 6.000



39



100

100

**Emile Gallé, Nancy**  
**Vase 'Echinacee', c. 1895**

H. 34 cm. Smoke-brown glass, optically blown. Etched, enameled and gilded. Decor in an autumnal mood with blooming coneflowers. Signed: Gallé (raised and gilded).

Cf. Cat. Art Nouveau, Mainz State Museum, Mainz 1900, No. 94, already exhibited in: Exh. cat. Nancy 1900, Munich City Museum, Mainz 1980, No. 285 (not illustrated).

€ 2.500 - 3.500



101

101

**Emile Gallé, Nancy**  
**Vase 'Poireau', c. 1895**

H. 10 cm. Optically blown blue glass, etched inside and outside, polychrome enamel decor with flowering leeks. Heightened with gold. Signed on the bottom: Gallé modèle et décor déposés compos t (needle etching).

Cf. Ricke/Schmitt, Glass Collection Gerda Koepff, Kunstmuseum Düsseldorf, Munich 1998, p. 110, no. 25.

€ 2.500 - 3.500



102

**Emile Gallé, Nancy**  
**Tall vase 'Coloquintes grimpantes', c. 1895**

H. 57.5 cm. Smoke brown glass. Etched, enameled and gilded. Decor with blooming pumpkin on a rough background. Signed: Gallé (raised and gilded).

Cf. Duncan/de Bartha, Glass by Gallé, London 1984, p. 53, no. 44; cf. Hilschenz-Mlynek/Ricke, Hentrich Glass Collection, Kunstmuseum Düsseldorf, Munich 1985, No. 255.

€ 8.000 - 12.000



103

**Emile Gallé, Nancy**  
**Tall marquetry vase 'Crocus', 1897-98**

Stylized floral shape. H. 33.5 cm. Cased glass, milky opalescent and colorless, pink threads in the intermediate layers, distorted like lancet-shaped leaves, fine air bubble inclusions covering the entire surface, so-called 'patinage'. Front side with purple, opal white and orange Marqueterie de verre with three crocus flowers and two buds on long stems, yellow stamens. Blossoms reworked with the wheel. Signed: Gallé (needle engraving).

Thiébaud, Les dessins de Gallé, Paris 1993, p. 31, fig. 25.

€ 22.000 - 24.000





**104**  
**Emile Gallé, Nancy**  
**'Coprins, araignée' vase, 1898-1900**

H. 37.8 cm. Cased glass, pale amber and clear. Between layers brown, white and dark blue inclusions (salissures intercalaires). Reworked with the wheel. Motif with shaggymane and cross spider in its web. Signed: Gallé (engraved).

Cf. Hilschenz-Mlynek/Ricke, Glassammlung Hentrich Düsseldorf, Munich 1985, no. 24.

€ 8.000 - 12.000

**105**

**Emile Gallé, Nancy**  
**'Bouton d'Iris' marqueterie vase, 1900**

H. 22.5 cm. Cased glass, clear, fused combed purple and amber threads. Orange yellow stamen as marqueterie, fine air bubbles (Patinage). Signed: Gallé, 1900 (engraved), inscribed: Bouton d'Iris.

€ 1.500 - 2.500







106



107



108

**106**  
**Emile Gallé, Nancy**  
**Etude vase 'Le Genièvre' with a quote by Baudelaire, 1900**

H. 22.3 cm. Cased glass, pale yellow and auburn. Etched pattern with junipers, inscribed: 'Le Genièvre', quote from the poem 'Le Flacon' by Charles Baudelaire (Les Fleurs du Mal, XLVIII): 'Parfois on trouve un vieux flacon qui se souvient D'où jaillit toute vive une âme qui revient'. Baudelaire. Signed: Gallé 1900, Etude.

Trimmed.

Cat. Emile Gallé et le Verre, la Collection du Musée des Beaux Arts de Nancy, 2004, no. 244, this exemplar, called 'Etude', was presumably trimmed due to an imperfection that had occurred during manufacture.

€ 500 - 700

**107**  
**Emile Gallé, Nancy**  
**'Tomate' flacon, from a series of fruit for the Paris World Fair 1900**

H. 14 cm. Cased glass, green and clear, amber-brown, dark green foliage to the collar, gray/green stopper. Signed: Gallé, 4 (same as stopper!) (diamond cut).

Bloch-Dermant, l'Art du verre en France, Lausanne 1974, p. 93; Hilschenz-Mlynek/Ricke, Glass coll. Hentrich, Kunstmuseum Düsseldorf, 1985, no. 278.

€ 1.800 - 2.800

**108**  
**Emile Gallé, Nancy**  
**Marqueterie parlante vase with a quote from Victor Hugo's 'Melancholia' exhibited at the Paris World Fair 1900**

H. 17.4 cm (including lid: H. 20 cm). Cased glass, green, clear and amber, dark blue inclusions and air bubbles (Patinage). Elaborate marqueterie with polychromatic engraved applications. Cowslips in front of a wood. Above the foot a quotation from the poem 'Melancholia' extract from Victor Hugos 'Les Contemplations': "o forêts, bois profonds, solitudes, asiles..." (engraved). Signed: Gallé (engraved). Inscribed: Expo 1900 (engraved). Gilded silver mounting (stamped: Head of Minerva).

The vase has been trimmed.

Important testimony of Emile Gallé's symbolism. As a botanist, he was aware of the relevance and effect of cowslip that had been already known to Hildegard von Bingen as a remedy against melancholia.

€ 2.000 - 3.000

**109**  
**Emile Gallé, Nancy**  
**Vase 'Anemones', 1900-02**

H. 25.5 cm. Cased glass, clear, matted and orange. Etched decor with anemones. Signed: Gallé (raised).

€ 900 - 1.200

**110**  
**Emile Gallé, Nancy**  
**Box and cover, c. 1900**

H. 7 cm, Ø 10.6 cm. Cased glass, colorless, frosted and violet. Etched decoration with clematis, partially reworked with the wheel. Signed: Gallé (raised).

Box with crack.

Image online.

€ 250 - 350

**111**  
**Emile Gallé, Nancy**  
**Etude Vase 'Dragonflies', um 1900**

H. 16.1 cm. Cased glass, colorless, dark blue, opal green. Etched decor with dragonflies and stylized leaves. Signed on the bottom: Etude Gallé (needle engraving).

Two manufacturing-related traces of pliers in the wall, one of which is a decorative element in the dragonfly's body.

€ 1.200 - 1.400



109



111



112

**Emile Gallé, Nancy**

**Etude vase 'Bleuets' also called 'Artichaut', c. 1900**

In the shape of a fruit capsule on a trumpet stand. H. 20 cm. Green-tinted glass with streaky orange-brown powder inclusions, fused, burst precious metal foil and oxide inclusions. Marquetry with two applied cornflowers, blossoms and stems. Wall signed: Gallé Etude (needle engraving).

Long, manufacturing-related crack in the body.

Provenance: Felix Marcilhac Collection, Abercron Gallery, German private collection.

Garner, Emile Gallé, Munich 1979, p. 157; Cat. Nancy 1900, Munich City Museum, Mainz 1980, No. 245, color illustration. p. 95.

€ 12.000 - 14.000





113



115



116



117



114

**113**

**Etablissements Gallé, Nancy**  
**Vase 'Nénuphars et libellule', 1908-20**

H. 14.3 cm. Cased glass, clear, matt and amber brown. Etched decor with water lily pond with large flying dragonfly. Signed: Gallé (raised).

Hilschensch-Mlynek/Ricke, Hentrich Glass Collection, Kunstmuseum Düsseldorf, Munich 1985, No. 341 (decor).

€ 1.200 - 1.600

**114**

**Etablissements Gallé, Nancy**  
**Tall 'Clematites' vase, 1905-08**

H. 35.1 cm. Cased glass, colorless, amber yellow and violet. Etched decoration with clematis tendrils. Signed: Gallé (raised).

€ 1.000 - 1.500

**115**

**Etablissements Gallé, Nancy**  
**Bowl 'Paysage lacustre et Papillons', presumably 1905-08**

H. 7.8 cm. Cased glass, colorless, yellow and brown. Etched decor with bank landscape, matted. Two flying butterflies on the lid. Signed: Gallé (raised).

€ 1.000 - 1.500

**116**

**Etablissements Gallé, Nancy**  
**Vase 'Anémones des Prés, Pulsatilles', 1908-14**

H. 15.3 cm. Cased glass, pink, colorless and wine red. Etched decor with pasque flowers in an evening mood. Signed: Gallé (raised).

€ 900 - 1.200

**117**

**Etablissements Gallé, Nancy**  
**Lampe Berger 'Cerisiers', 1908-20**

H. 16.8 cm. Cased glass, clear, white, yellow and pink. Etched decor with cherry branches. Signed: Gallé (raised). Silver-plated brass frame, marked: MADE IN FRANCE, Lampe Berger (embossed).

€ 400 - 600

**118**

**Etablissements Gallé, Nancy**  
**Small 'Orchidees' vase, 1908-20**

H. 13 cm. Cased glass, colorless, opal white, orange yellow and violet. Etched decor with orchids. Signed: Gallé (raised).

Image online.

€ 300 - 400

**119**

**Etablissements Gallé, Nancy**  
**Soliflor 'Fleurs des champs', 1908-20**

H. 22.5 cm. Cased glass, colorless, amber yellow and violet. Etched decor with meadow flowers. Signed: Gallé (raised).

€ 800 - 1.200



119



120

**Etablissements Gallé, Nancy  
'Adiante et Papillons' table light,  
1908-20**

H. 55.5 cm, Ø 21 cm. Cased glass, colorless, amber and olive green. Etched decor with maidenhair fern. Lampshade with 14 flying butterflies. Signed: Gallé (raised). Bronze mounting.

Cf. exh. cat. Emile Gallé et le verre, la collection du Musée de l'Ecole de Nancy, Nancy 2004, No. 276.

€ 4.000 - 5.000



121

121

**Etablissements Gallé, Nancy  
Box and cover 'Fleurs de Pommier', 1908-20**

H. 25 cm. Cased glass, colorless, light amber and wine red. Etched decor with apple blossoms in the light of the setting sun. Signed: Gallé (raised).

€ 2.000 - 3.000



122

122

**Etablissements Gallé, Nancy  
Small 'Sagittaires et Nénuphar' vase, 1920-24**

H. 20 cm. Cased glass, amber, colorless, blue and deep violet. Etched decor of a pond landscape with arrowweed and water lilies. Signed: Gallé (raised).

Several pincer marks on the foot.

€ 700 - 900

123

**Etablissements Gallé, Nancy  
Jardinière 'Clématites', 1920-36**

H. 8.6 cm, 24.9 x 13 cm. Cased glass, colorless, violet and milky pink. Etched decoration with clematis tendrils. Signed: Gallé (raised).

€ 600 - 800



123



124

**Etablissements Gallé, Nancy**

**Soufflé table light 'Rhododendron', 1925-36**

H. 46 cm, Ø 36 cm. Cased glass, opalescent, colorless, yellow and violet, blown using the so-called soufflé technique. Etched decor with blooming rhododendron branches. Shade and base signed: Gallé (etched). Brass rods.

€ 80.000 - 90.000





**125**  
**Etablissements Gallé, Nancy**  
**Soufflé ceiling light 'Cognassiers', 1925-36**  
 H. 17 cm, Ø 50 cm (body). Cased glass, colorless, opal white, yellow and green, blown using the so-called soufflé technique. Etched decor with ornamental quinces. Signed: Gallé (raised). Gilt bronze mounting.  
**€ 3.500 - 4.500**



**126**  
**Etablissements Gallé, Nancy**  
**Soufflé bowl 'Marine', 1925-36**  
 H. 17.5 cm, Ø 32 cm. Cased glass, colorless, green and dark brown, blown using the so-called soufflé technique. Etched decor with shells, starfish and seaweed. Signed: Gallé (raised).  
 Duncan/de Bartha, Glass by Gallé, London 1984, p. 196.  
**€ 18.000 - 24.000**



127

**127**

**Etablissements Gallé, Nancy  
Vase 'Clématites', 1925-36**

H. 11 cm. Cased glass, colorless, amber brown, blue and green. Etched decor with alpine clematis (*Clematis alpina*). Signed: Gallé (raised).

€ 2.000 - 3.000

**128**

**Etablissements Gallé, Nancy  
'Cyclamens' bowl, 1928-36**

H. 8.8 cm, Ø 19.5 cm. Cased glass, colorless, lemon yellow and wine red. Etched decor with blooming cyclamen in an evening mood. Signed: Gallé (Japanese, raised).

€ 1.500 - 2.500



128



**129**

**Etablissements Gallé, Nancy  
Soufflé vase 'Vigne', 1925-36**

H. 28.2 cm. Cased glass, colorless, amber brown and dark green, blown using the so-called soufflé technique. Etched decor with vine leaves and grapes. Signed: Gallé (raised).

€ 5.000 - 6.000



130



131

**130**  
**René Lalique**  
**Vase 'Monnaie du pape', 1914**  
 H. 23.2 cm. Execution: Rene Lalique, Combs-la-Ville or Wingen-sur-Moder. Colorless, mold-blown glass, satin finish with green-blue patina. Signed: R. LALIQUE (embossed), France (engraved).  
 Marcilhac, René Lalique, Paris 2011, no. 897.  
**€ 1.000 - 1.400**

**131**  
**René Lalique**  
**Figure 'Sirène', 1920**  
 H. 10 cm. Execution: René Lalique, Combs-la-Ville or Wingen-sur-Moder, before 1947. Colorless pressed glass, satin finish, gray-blue patina. Signed: R. Lalique France, N° 831 (engraved).  
 Marcilhac, René Lalique, Paris 2011, No. 831.  
**€ 1.000 - 1.500**



132



133

**132**  
**René Lalique**  
**Vase 'Gui', 1920**  
 H. 17 cm. Execution: René Lalique, Combs-la-Ville or Wingen-sur-Moder, before 1947. Colorless, mold-blown glass, satin finish, partially blue patina. Signed: R. LALIQUE (embossed).  
 Marcilhac, René Lalique, Paris 2011, No. 948.  
**€ 600 - 800**

**133**  
**René Lalique**  
**Two 'Volubilis' bowls, 1921**  
 Ø 21.5 cm. Execution: René Lalique, Combs-la-Ville or Wingen-sur-Moder, before 1947. Colorless pressed glass, opalescent and partially satin finish. Both signed: R. LALIQUE FRANCE, N° 383 (engraved).  
 Marcilhac, René Lalique, Paris 2011, No. 383.  
**€ 700 - 900**

**134**  
**René Lalique**  
**Vase 'Acacia', 1921**  
 H. 20.3 cm. Execution: René Lalique, Combs-la-Ville or Wingen-sur-Moder, before 1947. Colorless, mold-blown glass, satin finish with blue patina. Signed: R. LALIQUE (raised), R. Lalique France (engraved).  
 Marcilhac, René Lalique, Paris 2011, No. 949.  
**€ 700 - 900**

**135**  
**René Lalique**  
**Vase 'Ronces', 1921**  
 H. 23.5 cm. Execution: Lalique, Combs-la-Ville or Wingen-sur-Moder, before 1947. Yellow (butterscotch), mold-blown glass, satin finish. Signed: R. LALIQUE (embossed), Lalique (engraved).  
 Marcilhac, René Lalique, Paris 2011, No. 946.  
**€ 3.500 - 4.500**



134



135





136

136

**René Lalique**  
**Vase 'Archers', 1921**

H. 26.5 cm. Execution: René Lalique, Combs-la-Ville or Wingen-sur-Moder, before 1947. Colorless, mold-blown glass, opalescent, satin finish with blue patina. Signed: R. Lalique France N° 893 (engraved).  
Marcilhac, René Lalique, Paris 2011, No. 893.  
€ 5.000 - 6.000

137

**René Lalique**  
**Flacon 'Vouloir c'est pouvoir' for Arys, 1922**

H. 15.5 cm. Execution: René Lalique, Wingen-sur-Moder, before 1947. Colorless, mold-blown glass, partially satin finish with green patina. Signed: ARYS, R. LALIQUE (raised).  
Marcilhac, René Lalique, Paris 2011, p. 925, No. ARYS-21.  
€ 700 - 900

138

**Rene Lalique**  
**Vase 'Esterel', 1923**

H. 15 cm. Execution: René Lalique, Wingen-sur-Moder, before 1947. Colorless, mold-blown glass, opalescent, satin finish with light blue patina. Signed: R. LALIQUE (embossed).  
Marcilhac, René Lalique, Paris 2011, No. 941.  
€ 1.000 - 1.400



137



138



139

139

**Rene Lalique**  
**Vase 'Druide' or 'Gui de chêne', 1924**

H. 17.5 cm. Execution: René Lalique, Wingen-sur-Moder, before 1947. Colorless, mold-blown glass, opalescent, satin finish. Signed: R. LALIQUE (embossed).  
Marcilhac, René Lalique, Paris 2011, No. 937.  
€ 1.000 - 1.500

140

**Rene Lalique**  
**'Fauvettes' ashtray, 1924**

Ø 17.5 cm. Execution: René Lalique, Wingen-sur-Moder, before 1947. Colorless pressed glass, slightly opalescent, partially satin finish with blue patina. Signed: R. LALIQUE (embossed).  
Marcilhac, René Lalique, Paris 2011, No. 282.  
€ 400 - 600

141

**Rene Lalique**  
**Bottle/atomizer for Eduardo, 1924**

H. 12.5 cm. Execution: René Lalique, Wingen-sur-Moder, before 1947. Colorless pressed glass, satin finish with green patina, brass mounting. Signed: MADE IN FRANCE, R. LALIQUE (raised), MADE IN FRANCE (embossed).  
Marcilhac, René Lalique, Paris 2011, p. 960, No. EDUARDO-1.  
Image online.  
€ 300 - 400

142

**Rene Lalique**  
**Ashtray 'Médicis', 1924**

L. 14.9 cm. Execution: René Lalique, Wingen-sur-Moder, before 1947. Colorless pressed glass, opalescent, satin finish with blue patina. Signed: R. Lalique France N°280 (engraved).  
Marcilhac, René Lalique, Paris 2011, No. 280.  
€ 500 - 700

143

**Rene Lalique**  
**Bowl 'Coquilles No. 3', 1924**

H. 7.4 cm, Ø 18.5 cm. Execution: Rene Lalique, Wingen-sur-Moder, before 1947. Colorless pressed glass, opalescent. Signed: R. LALIQUE FRANCE (engraved).  
Marcilhac, René Lalique, Paris 2011, no. 3202.  
€ 400 - 600

144

**Rene Lalique**  
**Box and cover, 1925**

H. 5 cm, Ø 8.5 cm. Execution: René Lalique, Wingen-sur-Moder, before 1947. Colorless pressed glass. Signed: R. Lalique France (engraved).  
Marcilhac, René Lalique, Paris 2011, No. 76.  
Image online.  
€ 300 - 400



140



142



143



145

145

**Rene Lalique**  
**'Bouquet de Faunes' flacon for Guerlain, 1925**

H. 10 cm. Execution: René Lalique, Wingen-sur-Moder, before 1947. Colorless, mold-blown glass, gray-blue patina. Signed: GUERLAIN PARIS (raised).

Marcilhac, René Lalique, Paris 2011, p. 934, No. GUERLAIN-1.  
€ 500 - 700

146

**Rene Lalique**  
**Vase 'Albert', 1925**

H. 17.2 cm. Execution: René Lalique, Wingen-sur-Moder, before 1947. Colorless pressed glass, partially satin finish. Illegibly signed: R. LALIQUE (engraved).

Marcilhac, René Lalique, Paris 2011, No. 958.  
€ 1.000 - 1.400

147

**Rene Lalique**  
**Vase 'Beliers', 1925**

H. 18.8 cm. Execution: René Lalique, Wingen-sur-Moder, before 1947. Green-gray, mold-blown and pressed glass, satin finish handle. Signed: R. Lalique (engraved).

Marcilhac, René Lalique, Paris 2011, No. 904.  
€ 1.500 - 2.000



146



147

148

**Rene Lalique**  
**Vase 'Eucalyptus', 1925**

H. 16.3 cm. Execution: René Lalique, Wingen-sur-Moder, before 1947. Colorless pressed glass, opalescent, satin finish with blue patina. Signed: R. LALIQUE (raised).

Marcilhac, René Lalique, Paris 2011, No. 936.  
€ 1.400 - 1.800

149

**Rene Lalique**  
**Vase 'Antilopes', 1925**

H. 26.5 cm. Execution: René Lalique, Wingen-sur-Moder, before 1947. Colorless, mold-blown glass, partially enameled in black. Signed: R. LALIQUE (sandblasted).

Marcilhac, René Lalique, Paris 2011, No. 875.  
€ 3.000 - 4.000

150

**Rene Lalique**

Vase 'Formose', 1925

H. 17 cm. Execution: Rene Lalique, Wingen-sur-Moder, before 1947. Colorless, mold-blown glass, opalescent, satin finish with gray patina. Signed: R. LALIQUE (embossed).

Marcilhac, René Lalique, Paris 2011, no. 934.  
€ 1.200 - 1.800



149



148



150



151



152



153

**151**  
**Rene Lalique**  
**Flacon '5' for Forvil, 1926**

H. 15 cm. Execution: René Lalique, Wingen-sur-Moder, before 1947. Colorless, mold-blown glass, partially enameled in black. Signed: PARIS - FRANCE, R. LALIQUE (raised), 54 (engraved), remains of the perfumer's signet. Marcilhac, René Lalique, Paris 2011, p. 932, No. FORVIL-12.  
**€ 600 - 800**

**152**  
**Rene Lalique**  
**Vase 'Ormeaux', 1926**

H. 16.4 cm. Execution: René Lalique, Wingen-sur-Moder, before 1947. Milky, mold-blown glass, satin finish with blue patina. Signed: R. Lalique France (engraved). Marcilhac, René Lalique, Paris 2011, No. 984.  
**€ 1.000 - 1.400**

**153**  
**Rene Lalique**  
**'Moissac' vase, 1927**

H. 13 cm. Execution: Rene Lalique, Wingen-sur-Moder, before 1947. Colorless pressed glass, satin finish. Signed: R. LALIQUE (raised). Marcilhac, René Lalique, Paris 2011, no. 992.  
**€ 400 - 600**

**154**

**Rene Lalique**  
**Vase 'Bacchantes', 1927**

H. 24.8 cm. Execution: René Lalique, Wingen-sur-Moder, before 1947. Colorless pressed glass, satin finish, partially with gray patina. Signed: R. LALIQUE (raised), FRANCE (engraved). Marcilhac, René Lalique, Paris 2011, No. 997.  
**€ 9.000 - 12.000**





155

**155**  
**Rene Lalique**  
**Paperweight 'Coq nain', 1928**

H. 20.2 cm. Execution: René Lalique, Wingen-sur-Moder, before 1947. Gray pressed glass. Signed: R. LALIQUE FRANCE (raised), N° 1135 (engraved).  
Marcilhac, René Lalique, Paris 2011, No. 1135.  
€ 2.000 - 2.500

**156**  
**Rene Lalique**  
**Paperweight 'Tête d'Aigle', 1928**

H. 11.2 cm. Execution: René Lalique, Wingen-sur-Moder, before 1947. Colorless pressed glass, satin finish, partially with gray patina. Signed: R. LALIQUE FRANCE (raised).  
Marcilhac, René Lalique, Paris 2011, No. 1138.  
€ 700 - 900



156



157

**157**  
**Rene Lalique**  
**Seven-piece glass service 'Rosheim', 1929**

Carafe, 1 liqueur glass, 5 madeira glasses. H. 9.5-24 cm. Made by René Lalique, Wingen-sur-Moder, before 1947. Colorless mold-blown glass and pressed glass, partially satin finish. Signed: R.LALIQUE; R.LALIQUE FRANCE (sandblasted).  
Marcilhac, René Lalique, Paris 2011, Nos. 5193, 5196 and 5198.  
€ 800 - 1.000 (Standard taxation)



158

**158**  
**Rene Lalique**  
**Box and cover 'Figurines et Voiles', 1929**

Ø 10.8 cm. Execution: René Lalique, Wingen-sur-Moder, before 1947. Colorless, mold-blown glass, satin finish with blue patina. Signed: R. LALIQUE, MADE IN FRANCE (raised).  
Marcilhac, René Lalique, Paris 2011, No. 97.  
€ 800 - 1.200



159

**161**  
**Rene Lalique**  
**Vase 'Piriac', 1930**

H. 18.1 cm. Execution: René Lalique, Wingen-sur-Moder, vor 1947. Colorless pressed glass, opalescent, partially satin finish with gray-blue patina. Sign: R. LALIQUE FRANCE (sandblasted).  
Marcilhac, René Lalique, Paris 2011, No. 1043.  
€ 1.500 - 2.000

**159**  
**Rene Lalique**  
**Paperweight 'Sanglier', 1929**

H. 6.5 cm. Execution: René Lalique, Wingen-sur-Moder, before 1947. Dark pressed glass, partially satin finish. Signed: R. LALIQUE FRANCE (sandblasted).  
Marcilhac, René Lalique, Paris 2011, No. 1157.  
€ 1.000 - 1.500

**160**  
**Rene Lalique**  
**Vase 'Saint-Francois', 1930**

H. 17.7 cm. Execution: René Lalique, Wingen-sur-Moder, before 1947. Colorless pressed glass, satin finish, with green-blue patina. Signed: R. LALIQUE FRANCE (sandblasted).  
Marcilhac, René Lalique, Paris 2011, No. 1055.  
€ 1.000 - 1.400



160



161



162

**162**  
**Rene Lalique**  
**Table clock 'Roitelets', 1931**

H. 20 cm. Execution: René Lalique, Wingen-sur-Moder, before 1947. Colorless pressed glass, satin finish, movement by Omega. Signed: R. LALIQUE FRANCE (sandblasted), Omega (raised), Ref. No. (embossed).

Marcilhac, René Lalique, Paris 2011, No. 731.

€ 2.500 - 3.500



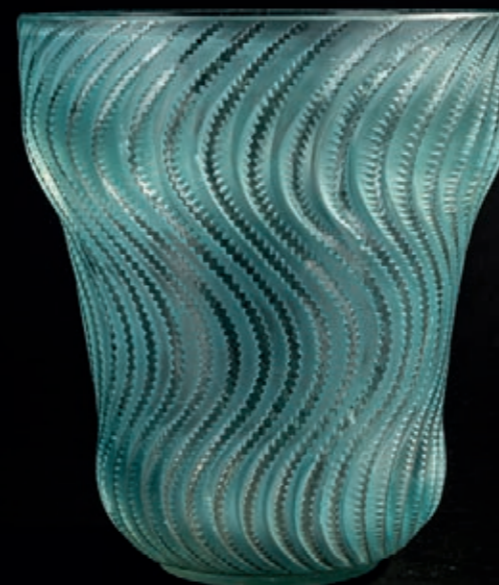
163

**163**  
**Rene Lalique**  
**Vase 'Beauvais', 1931**

H. 18.7 cm. Execution: René Lalique, Wingen-sur-Moder, before 1947. Colorless pressed glass, partially satin finish. Signed: R. LALIQUE FRANCE (sandblasted).

Marcilhac, René Lalique, Paris 2011, No. 1069.

€ 1.500 - 2.000



165

**165**  
**Rene Lalique**  
**Vase 'Actinia', 1934**

H. 21.8 cm. Execution: René Lalique, Wingen-sur-Moder, before 1947. Colorless pressed glass, satin finish with blue patina. Signed: R. LALIQUE FRANCE (sandblasted).

Marcilhac, René Lalique, Paris 2011, No. 10-889.

€ 2.000 - 2.500



166

**166**  
**Rene Lalique**  
**Vase 'Saint-Tropez', 1937**

H. 18.7 cm. Execution: René Lalique, Wingen-sur-Moder, before 1947. Colorless pressed glass, opalescent, satin finish with blue patina. Signed: R. LALIQUE FRANCE (sandblasted).

Marcilhac, René Lalique, Paris 2011, No. 10-915.

€ 800 - 1.200

**164**  
**Rene Lalique**  
**Bowl (coupe plate) 'Dauphins', 1932**

Ø 28.2 cm. Execution: René Lalique, Wingen-sur-Moder, before 1947. Colorless pressed glass, opalescent. Signed: R. LALIQUE FRANCE (sandblasted).

Marcilhac, René Lalique, Paris 2011, No. 423.

€ 1.000 - 1.500

**167**  
**Rene Lalique**  
**Vase 'Saint-Marc', 1939**

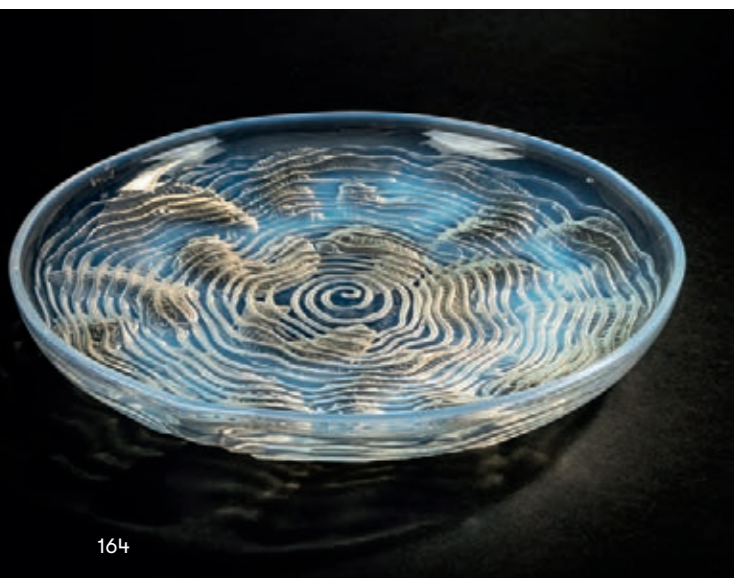
H. 17.1 cm. Execution: René Lalique, Wingen-sur-Moder, before 1947. Colorless pressed glass, partially satin finish with green patina. Signed: R. LALIQUE (sandblasted).

Marcilhac, René Lalique, Paris 2011, No. 10-934.

€ 1.000 - 1.400



167



164

168

**Rene Lalique**  
**Vase 'Pierrefonds', 1926**

H. 15.2 cm. Execution: Lalique, Wingen-sur-Moder, after 1947. Colorless crystal glass, satin finish. Signed: Lalique France (engraved).

Marcilhac, René Lalique, Paris 2011, No. 990.

€ 2.500 - 3.500



168

169

**Rene Lalique**  
**Paperweight 'Sanglier', 1929**

H. 6.5 cm. Execution: Lalique, Wingen-sur-Moder, after 1947. Colorless pressed glass, partially satin finish, gray patina. Signed: LALIQUE FRANCE (sandblasted).

Marcilhac, René Lalique, Paris 2011, No. 1157.

€ 400 - 600

170

**Rene Lalique**  
**'Madrigal' flacon for Molinard, c. 1930**

H. 15 cm. Execution: Lalique, Wingen-sur-Moder, after 1947. Colorless mold-blown glass, satin finish with green patina. Signed: No. 120 Molinard Lalique France (engraved).

Utt, Lalique Perfume Bottles, London 1991, p. 85, fig. 162.

€ 500 - 700



169

170



171

171

**Rene Lalique**  
**Paperweight 'Chrysis', 1931**

H. 12.6 cm. Execution: Lalique, Wingen-sur-Moder, after 1947. Colorless pressed glass, satin finish. Signed: LALIQUE FRANCE (sandblasted).

Marcilhac, René Lalique, Paris 2011, No. 1183.

€ 500 - 700

172

**Rene Lalique**  
**Vase 'Biches', 1932**

H. 16.7 cm. Execution: Lalique, Wingen-sur-Moder, after 1947. Colorless crystal glass, satin finish, partially with blue patina. Signed: LALIQUE FRANCE (sandblasted).

€ 500 - 700

173

**Rene Lalique**  
**Vase 'Quatre têtes et raisins', 1939**

H. 14.1 cm. Execution: Lalique, Wingen-sur-Moder, after 1947. Colorless crystal glass, satin finish, partially with blue patina. Signed: LALIQUE FRANCE (sandblasted).

Marcilhac, René Lalique, Paris 2011, p. 409, No. Q.

€ 800 - 1.200



172

173

174

**Rene Lalique**  
**Jardiniere 'Faisans', 1941**

H. 7.3 cm, L. 43.5 cm. Execution: Lalique, Wingen-sur-Moder, after 1947. Colorless crystal glass, partially satin finish with brown patina. Signed: Lalique France (engraved).

Marcilhac, René Lalique, Paris 2011, No. 3466.

€ 500 - 700



174

175

**Rene Lalique**  
**'Camargue' vase, 1942**

H. 28.5 cm. Execution: Lalique, Wingen-sur-Moder, after 1947. Colorless pressed glass, partially satin finish with brown patina. Signed: LALIQUE FRANCE (sandblasted).

Marcilhac, René Lalique, Paris 2011, No. 10-937.

€ 2.500 - 3.500



175

176

**Lalique**  
**Two 'Chameleons', 1980s**

H. 4 cm, L. 6.8 cm. Execution: Lalique, Wingen-sur-Moder, after 1978. Crystal glass, red or blue, respectively. Signed: Lalique® France (engraved).

Image online.

€ 150 - 250

177

**Lalique**  
**'Daphne' box and cover, 1980s**

H. 5.5 cm; Ø 7.6 cm. Execution: Lalique, Wingen-sur-Moder, after 1978. Colorless crystal glass, satin finish, brass mounting. Signed: Lalique® France (engraved).

Image online.

€ 200 - 300



179

**179**  
**Legras & Cie., Saint-Denis**  
**Two small 'Lamartine' vases,**  
**c. 1910**

H. 9-9.2 cm. Cased glass, colorless and opal white. Polychrome enameled landscapes, rough background. Signed: Lamartine (needle etching); on the bottom: 327/694 or 327/540 (needle etching). One vase with tiny splinters to the stand.  
**€ 600 - 800**

**180**  
**Legras & Cie., Saint-Denis**  
**Vase 'Raisins', c. 1925**

H. 27.5 cm. Cased glass, colorless/orange and violet. Etched decor with grapes and tendrils on a rough satin finish background. Signed: Legras (raised).  
**€ 400 - 500**



181

**181**  
**Muller Frères, Lunéville**  
**Miniature vase 'Paysage', c. 1920**

H. 7.6 cm. Cased glass, colorless, violet and orange powder inclusions. Etched and enameled decor with a tree landscape and flying birds. Signed: Muller Frères Lunéville (raised).  
**€ 400 - 500**

**182**  
**Muller Frères, Lunéville**  
**Tall vase 'Voiliers', c. 1935**

H. 35.8 cm. Cased glass, colorless and bluish. Etched decor with sailboats in a morning mood on a matt background. Signed: MULLER FRES LUNEVILLE (enameled).  
**€ 800 - 1.200**

**183**  
**Henri Muller, Croismare**  
**'Anemones' vase with handles, c. 1900**

H. 14.3 cm. Cased glass, colorless, with yellow powder inclusions and orange. Motif with anemones etched with the addition of metal oxides, the flowers and leaves reworked with the wheel. Bottom signed: HMuller Croismare (needle etching).  
**€ 2.200 - 3.200**

**184**  
**Paul Nicolas, Nancy**  
**Small vase with city view, 1918-25**

H. 11.2 cm. Cased glass, colorless, amber brown and dark red. Etched decor with a city view and storks. Signed: d'Argental (raised).  
**€ 900 - 1.200**



183



180



182



184

185

**Marius-Ernest Sabino  
'Poissons' table light, c. 1930**

H. 20 cm (total). Pressed glass, colorless and opalescent white. Signed: SABINO FRANCE (raised). Silver-plated bronze base, electrified. Marked: SABINO FRANCE (raised). Chips to the bottom.  
€ 900 - 1.200



185

186

**Marius-Ernest Sabino  
Figurative table light, c. 1930**

H. 24.5 cm (with base). Molded glass, colorless and opalescent white. Signed: Sabino (needle engraving). Silvered bronze base, electrified.  
€ 1.100 - 1.300



186



187

187

**Marius-Ernest Sabino  
Cow elephant with young, c. 1930**

H. 18 cm. Pressed glass, colorless and opalescent white. Signed: SABINO FRANCE (raised).  
€ 800 - 1.200



188

188

**Schneider, Epinay-sur-Seine  
Pepper, 1920-25**

L. 10.5 cm. Lampwork, colorless, opaque red, green and violet. Signed: Schneider (needle engraving).  
Joulin/Maier, Charles Schneider, Augsburg 2004, p. 221.  
€ 600 - 700



189

190

**Schneider, Epinay-sur-Seine  
'Campanules' vase, 1922-25**

H. 17 cm. Cased glass, colorless, with red and yellow powder inclusions. Dark red-brown enamel melts. Etched decor with bluebells in an evening mood. Signed: Le Verre Français (needle etching).  
Joulin/Maier, Charles Schneider, Munich 2020, p. 116.  
€ 900 - 1.200

189

**Schneider, Epinay-sur-Seine  
Zucchini, 1920-25**

L. 12 cm. Lampwork, colorless, powder fusions in predominantly green and orange. Signed: Schneider (needle engraving, residue of gold).  
Joulin/Maier, Charles Schneider, Augsburg 2004, p. 221.  
€ 600 - 700

191

**Schneider, Epinay-sur-Seine  
'Groseilles' vase with handles, 1923-26**

H. 25.5 cm. Cased glass, colorless, with lemon yellow powder inclusions. Enamel fusions, orange and violet. Decor with currants, reworked with the wheel. Signed: Le Verre Français (needle etching).  
Joulin/Maier, Charles Schneider, Munich 2020, p. 130 (decor).  
€ 1.400 - 1.800



190



191





**192**  
**Schneider, Epinay-sur-Seine**  
**Tall 'Lauriers' vase, 1924-27**  
 H. 45 cm. Cased glass, colorless, milk white and orange powder inclusions, violet enamel fusions. Etched decor with laurel leaves. Signed: Le Verre Français (needle etching). Joulin/Maier, Charles Schneider, Munich 2020, p. 163 (decor).  
**€ 1.500 - 1.800**

**193**  
**Schneider, Epinay-sur-Seine**  
**'Garances' vase, 1924-27**  
 H. 18.1 cm. Cased glass, colorless, pink and blue powder inclusions, pink-red enamel fusions. Etched decoration with madder. Signed: Le Verre Français (needle etching). Joulin/Maier, Charles Schneider, Munich 2020, p. 133.  
**€ 700 - 900**



193

**194**  
**Schneider, Epinay-sur-Seine**  
**Vase 'Yucca orange', 1925-27**  
 H. 9 cm. Cased glass, yellow powder inclusions, orange enamel fusions in the upper area and brownish enamel in the lower area. Etched decor with American palm lily. Foot signed: Le Verre Français (needle etching).  
**€ 500 - 700**

**195**  
**Schneider, Epinay-sur-Seine**  
**Vase 'Marguerites', 1924/25**  
 H. 39 cm. Cased glass, colorless with dense powder inclusions in pink, milk violet and lemon yellow as well as dark violet, matted. Frieze of three daisy flowers in applied orange glass with black seed head and leafy tendrils; Petals finely reworked with the wheel, the base of the flower marbled, the tendrils partially fire-polished. Stand signed: Schneider (engraved). Joulin/Maier, Charles Schneider, Augsburg 2004, p. 278.  
**€ 2.500 - 3.500**



194



195

192



196

**196**  
**Georges Tonnellier**  
**Two figurative seals, c. 1900**

H. 9.3-9.5 cm (figurine, each). Agate and rock crystal, cut.  
 Plinths signed: TONNELIER (engraved).  
 Plexiglass bases added later.

€ 900 - 1.200



198

**197**  
**Verreries des Andelys**  
**Tall vase 'Coqs', c. 1930**

H. 28.3 cm. Colorless pressed glass. Relief decoration with roosters in high grass. Signed: A Verlys, France (embossed).

€ 700 - 900

**198**  
**Henri Berge**  
**Vase 'Lotus', 1906-13**

H. 16 cm. Execution: Amalric Walter, Nancy, c. 1920. Pâte de verre, translucent glass, predominantly amber yellow. Relieved wreath with green powder fusions. Signed: AWALTER NANCY, HBergé sc (indistinct) (embossed).

Cf. Le Tacon/Hurstel, Amalric Walter, Metz 2013, p. 79.

€ 2.000 - 3.000



197



199

**199**  
**Amalric Walter**  
**'Sparrow' ashtray, c. 1920**

H. 7.5 cm, 11.5 x 11.2cm. Pâte de verre, translucent glass, molded, predominantly amber-brown with green fusions. Signed: AWALTER NANCY (embossed).

€ 500 - 700

**200**  
**Henri Mercier**  
**Two nymphs with flowering plants, c. 1922**

H. 15.2 cm. Pâte de verre, translucent glass, predominantly amber yellow. Green, blue and red powder fusions. Base signed: hmercier, AWALTER NANCY (embossed).

€ 1.000 - 1.400



200

**201**  
**Amalric Walter**  
**Tondo with a mythological scene, c. 1922**

Ø 14 cm. Pâte de verre, translucent glass, predominantly amber yellow. Green and yellow powder fusions. Relief depiction of an ancient-time couple with two cupids and a dog. Edge signed: A.WALTER NANCY (embossed).

€ 900 - 1.200

**202**  
**Amalric Walter**  
**Female bust with cap and veil, c. 1922**

H. 13 cm. Pâte de verre, translucent glass, predominantly dove blue. Base signed on the back: AWALTER NANCY (embossed).

€ 500 - 700



201



202



203

**203**  
**Henri Bergé**  
**Vase with snails, c. 1923**

H. 9.5 cm, Ø 11 cm. Execution: Amalric Walter, Nancy. Pâte de verre, translucent glass, predominantly amber yellow. Vanilla yellow and honey yellow powder fusions. Wall signed: HBergé, AWalter Nancy (embossed). One snail with repair. Exh. cat. Amalric Walter, Fondazione Musei Civici, Venice 2013, p. 52.  
**€ 1.500 - 2.000**

**204**  
**Lejan**  
**'Martin pêcheur', 1925-30**

H. 20.5 cm. Execution: Amalric Walter, Nancy. Pâte de verre, translucent glass, molded, predominantly soft green and green fusions. Signed: LEJAN AWALTER NANCY. Cf. Le Tacon/Hurstel, Amalric Walter, Metz 2013, p. 81.  
**€ 1.200 - 1.800**



204



205

**205**  
**Amalric Walter**  
**Plaque 'Pietà', 1925-30**

16.2 x 11.8 cm. Pâte de verre, translucent glass, mold-melted, predominantly soft green and green fusions. Signed: AWALTER NANCY (embossed). Le Tacon/Hurstel, Amalric Walter, Metz 2013, p. 103.  
**€ 500 - 700**



206

**206**  
**Amalric Walter**  
**Plaque 'Sacre Coeur', 1925-30**

17.9 x 17.9 cm. Pâte de verre, translucent glass, molded, predominantly brownish, fusions in green, pink, yellow and blue. Signed: AWALTER NANCY (embossed).  
**€ 700 - 900**

**207**  
**Amalric Walter**  
**Table object, c. 1925**

H. 5 x 19.7 x 18 cm. Pâte de verre, translucent glass, predominantly colorless, turquoise blue and yellow powder fusions. Signed on the side: AWALTER NANCY (embossed).  
**€ 1.500 - 2.500**

**208**  
**Henri Bergé**  
**'Lézard', c. 1925**

H. 4 cm, 11.3 x 4.5 cm. Pâte de verre, translucent glass, predominantly green. Signed: HBergé sc, AWALTER NANCY (embossed).  
**€ 700 - 800**

**209**  
**Marcel Corrette**  
**Jardiniere, c. 1928**

H. 9.2 cm, 13.5 x 11.5 cm. Execution: Amalric Walter, Nancy. Pâte de verre, translucent glass, predominantly amber yellow, violet powder fusions. Stylized floral band all around. Wall signed: M. Corrette sc., AWALTER NANCY (embossed).  
**€ 1.000 - 1.500**



207



208



209

210

**Carlo Bugatti  
Side chair, 1895**

H. 92 cm, 32 x 45 cm. Ebonized wood, richly decorated in Arabic style. Metal inserts. The turned legs are covered with leg rods and supports made of embossed copper. The backrest in the middle is decorated with a disc-shaped filling between braided cords. On the seat and backrest there is a parchment covering, decorated with birds, tendrils and oriental 'characters'.

Exh. cat. Die Bugattis, Museum für Kunst und Gewerbe, Hamburg 1983, No. C 30, *ibid.*, Fig. 7, reproduction of a panel 'Quaint Furniture at the Italian Exhibition' from 'The Queen, The Lady's Newspaper' July 1888 (also in: *The Amazing Bugattis*, New York 1979, p. 22).

€ 4.000 - 5.000



210

211

**Carlo Bugatti  
Stool, c. 1900**

H. 41.5 cm, 34.5 x 34.5 cm. Ebonized wood, richly decorated in Arabic style. Metal inserts. The turned legs are covered with leg rods and supports made of embossed copper.

Exh. cat. Die Bugattis, Museum of Art and Industry, Hamburg 1983, No. C105.

€ 4.000 - 5.000



211

212

**Emile Gallé  
Cabinet 'Pavots', c. 1890-92**

Four-legged construction; two inset compartments with supports in the form of stems with three-dimensionally carved poppy seed capsules, lower end as a box with folding doors; balustrated top shelf. H. 138 cm, 60 x 41 cm. Oak frames and mahogany boards with inlays in various woods, depicting branches with poppy flowers and capsules, partly in front of a cloudy night sky with stars. Inlaid signed: Gallé à Nancy. Original brass key.

Cf. Exh. cat. Gallé, Musée du Luxembourg, Paris 1985, no. 154.

€ 2.500 - 3.500





213

**Emile Gallé**

**'The cherry tree of Saint Lucia'  
side chair, 1890**

Open round backrest with inserted leaf;  
Elaborately sculpturally carved legs and  
frames with leaf motifs. H. 91.5 cm, 40.5 x 45  
cm. Walnut, carved, inlays in various woods,  
depiction of blossoming cherry branches.  
Signed: Emile Gallé, Nancy (embossed).

Provenance: Emile Gallé's private house 'La  
Garenne'; Estate of grandson Jean Bour-  
gogne (1903-99), son of daughter Thérèse  
with Lucien Bourgogne; Private property  
Germany.

Exh. cat. Gallé, Musée du Luxembourg, Paris  
1985, no. 153; Duncan, The Paris Salons vol.  
III, Woodbridge 1998, p. 219.

€ 12.000 - 16.000

## "Truth and beauty" - furniture by Émile Gallé.

"What noble nuances Gallé elicits from the heart of the oak, what harmonious contrast of tones when a leaf contrasts with the color of the trunk." With these poetic words, Marcel Proust, a friend of the craftsman Émile Gallé (1846-1904) at the time, praised the sensitivity and taste with which the artist designed his furniture. The poet was enraptured by the subtlety of the works and particularly sensitive to the mysteries and moods that enveloped them, as it were, like layers in his eyes. Thus, in addition to the imaginative and quality craftsmanship, the fascination of Gallé furniture is certainly also due to the fact that - based on the pantheistic worldview of their creator - their artistic design is ultimately intended to convey deeper statements about nature and its mysteries. Influenced by the Symbolism movement in art and literature, Gallé drew his inspiration from an in-depth study of the plant world. A fact that is not surprising when one knows that he had initially studied philosophy and botany and regularly published articles on horticulture. The function of the furniture ultimately played a rather subordinate role for Gallé. For him, it was first and foremost a vehicle for his Symbolist-influenced theories of nature. An aspect that is further supported by the fact that he often supplemented the pictorial marquetry of his furniture with additional quotations from poems by friendly writers.

In the last decade of the 19th century, ideas of an art of furniture were also developing in France that was to break away from the copying of historical models that had been so successfully cultivated here until then. What was now taking shape, however, remained virtually untouched by the English, German or Austrian reform movement with its more constructively clear and simple furniture. The closeness to the precious, sumptuous furniture of the 18th century was ultimately to remain palpable in the creations of Art Nouveau furniture art. Gallé, who founded the Ecole de Nancy in 1901 - along with Paris one of the centers of Art Nouveau - is today rightly regarded as probably the most striking figure of this movement. He ultimately influenced an entire generation of young artists, and he provided the impetus for a renewal of industrial art. His influence on the new style of decoration owes much not only to the art of glass, but also to that of furniture. The importance of his work was already recognized during Gallé's lifetime, and many of his exhibits were purchased even then for the Musée des Arts Décoratifs or the Musée Luxembourg, among others.

In 1885, Gallé was to begin producing luxurious furniture in addition to his famous glasswork, and for this purpose he engaged a number of experienced cabinetmakers, marquetry specialists and wood sculptors. He did not see any contradiction between the longing for original, elementary nature expressed in his furniture and a form of production using the most modern manufacturing machines. Logic of

form, sensitivity as well as liveliness of design were the most important characteristics of his furniture for Gallé. The designs for forms and decorations were always to be adapted to the function of the respective object. In the course of his many years of working with wood, he developed his own special views on the design of furniture, which he published in the detailed article "Le mobilier contemporain orné d'après la nature" in the Revue des Arts Décoratifs in 1900. For Gallé, modernity did not mean the introduction of stylistic novelties or merely pretty externals without deeper content and meaning, as he writes here, but his ambition was to design furniture according to the needs of modern man. For Gallé, the connection between the concepts of truth and beauty formed the basis for the design of a piece of furniture. In his opinion, beauty could be achieved if the laws of nature's growth, its structures and fundamental principles were observed with great sensitivity, because nature in its diversity offered infinite possibilities.

The basic structural elements of the furniture should not be covered by details, the joints should not be concealed, but modeled true to nature. According to Gallé, to solve this problem, one should observe how the branches of a plant grow out of the stem, how leaves attach to the branch, or how the flower is connected to the stem. Furniture designed according to these guidelines, he said, is a mirror of life and put the truth of nature above any artificial eclecticism.

In turn, Gallé saw the smooth surfaces of his furniture as a blank canvas, as it were, on which he could depict floral themes through the ingenious combination of different colored timbers. He was particularly enthusiastic about the techniques of marquetry and used them with great imagination in a quality never seen before. Moreover, he sometimes supplemented them with inlays of glass or other materials. The writer and symbolist Count Robert de Montesquiou wrote in the sixth chapter of his work "Les Roseaux Pensants", which he dedicated to Gallé, about these marquetry pictures: "From each line of a grain a new harmony flows into the eyes. A small depression of the terrain, the course of a stream, a small irregularity of the grain, which could come from a branching, becomes a cloud. The marqueterie completes the picture. One suspects, one knows the secrets that the heart of a felled tree entrusts to a cabinetmaker like Gallé; the essence of a tree speaks through him."

For Philippe Garner, a profound connoisseur of Émile Gallé's work, the artist was ultimately a poet who used glass and wood instead of words. His goal with his furniture was to create something that could be touched and felt, three-dimensional works of art that were as poignant and moving and as rich in nuance as poems.



**214**  
**Emile Gallé**  
**Card table 'Gardez les coeurs qu'avez gagnez', 1895**

Four-legged, rotating and hinged plate, felt-covered on the back, with a surrounding balustrade underneath. The legs are in the form of poppy stalks with three-dimensionally carved capsules. H. 74.5 cm, 80 x 45 cm or 80 x 90 cm. Walnut wood, plate with inlaid depiction in various woods, flowering thistles, heart and diamond motifs and inscription: GARDEZ LES COEURS QU'AVEZ GAGNEZ. Inlaid signed: E Gallé A Nancy.

Exh. cat. Gallé, Musée du Luxembourg, Paris 1985, no. 156.

€ 7.000 - 9.000



**215**  
**Emile Gallé**  
**'Etagere murale', 1890-92**

Rectangular box with folding doors, shelf with attached balustrated gallery on support feet in the form of stalks with three-dimensionally carved poppy seed capsules. H. 64 cm, 70 x 27 cm. Mahogany frames and boards; Inlays in different woods, sunset by the sea on the doors, the back wall with poppy capsules in a nighttime scene with stars, further stylized poppy blossoms bordering the landscape and on the side panels. Inlaid signature: Gallé à Nancy.

Cf. Exh. cat. Gallé, Musée du Luxembourg, Paris 1985, no. 154.

€ 1.200 - 2.200



215



**216**  
**Emile Gallé**  
**Card table, c. 1895**

H. 69.5 cm, 77.5 x 49.5 cm. Open: 100 cm. Walnut. Inlays of different precious timbers on table top. Signed: Emile Gallé Nancy (embossed).

€ 3.000 - 4.000





217

**217**  
**Emile Gallé**  
**Tea table 'Iris', c. 1898**

Four round, slightly flared legs; Plate with edging and side grip edge. H. 72.5 cm, 73.5 x 39.5 cm. Bamboo-like carved oak legs and shelf with inlays in various woods, depicting blooming irises. Inlaid signature: Emile Gallé.

Cf. Duncan, *The Paris Salons Vol. III*, Woodbridge 1998, p. 222, illustration top right (with different legs).

€ 1.500 - 2.500



218

**218**  
**Emile Gallé**  
**Dressing table, c. 1900**

Two shield-shaped shelves, balustrade under the table top; Closed at the back, upper part with mirror integrated into three pointed arched elements. H. 128 cm, 59 x 33 cm. Walnut wood construction, panels with inlays in different woods, blooming snowdrops or Christmas roses; two windows made of green glass with enamel-painted decoration, blooming snowdrops and crocuses. Unsigned.

€ 2.400 - 2.800

**219**  
**Emile Gallé**  
**Chest with brushwood collectors, 1900**

On four fluted legs raised to the sides; slanted, multi-curved hinged lid. H. 67 cm, 90 x 45 cm. Carved walnut frames, mahogany box with inlays in different woods, on the lid a depiction of a brushwood collector with two children and two dogs in a forest, a branch with nuts in the foreground, a village in the background, leaves and flowers on the sides. Inlaid signed: GALLÉ.

Cf. exh. cat. Nancy 1900, Munich City Museum, Munich 1980, No. 334 (chest in a slightly different shape with almost the same representation).

€ 2.800 - 3.600



219



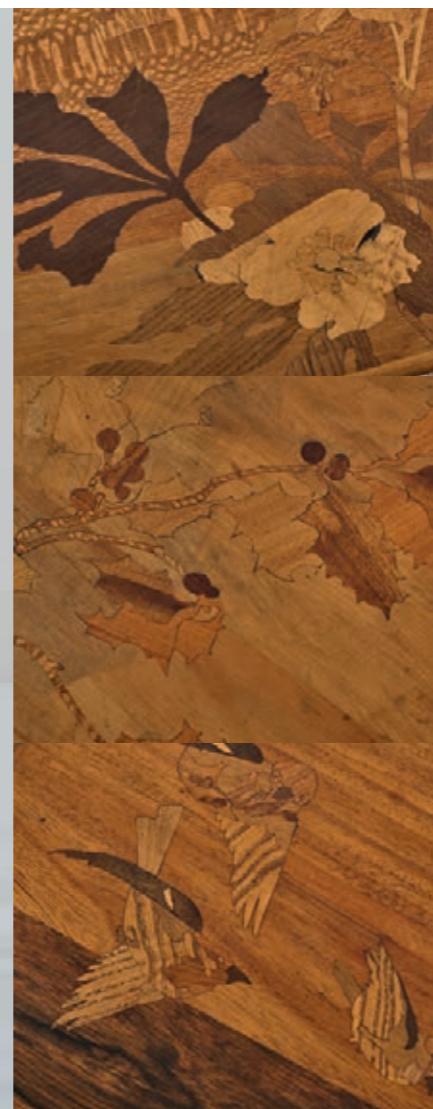
220

**220**  
**Emile Gallé, Nancy**  
**Tray, c. 1900**

H. 5 cm, 52 x 26 cm. Walnut, carved, floral decoration made from different precious woods. Signed: E. Gallé (inlaid).  
 Back: *Forme et décor déposés* (engraved), remains of an original paper label.  
**€ 700 - 900**

**221**  
**Etablissements Gallé, Nancy**  
**Three nesting tables, c. 1910**

H. 64.5-70 cm; 42-58 x 35.5 - 36.5 cm. Walnut with different precious wood inlays, motifs with birds, holly and Christmas rose. Signed: Gallé (inlaid).  
**€ 1.500 - 2.500**

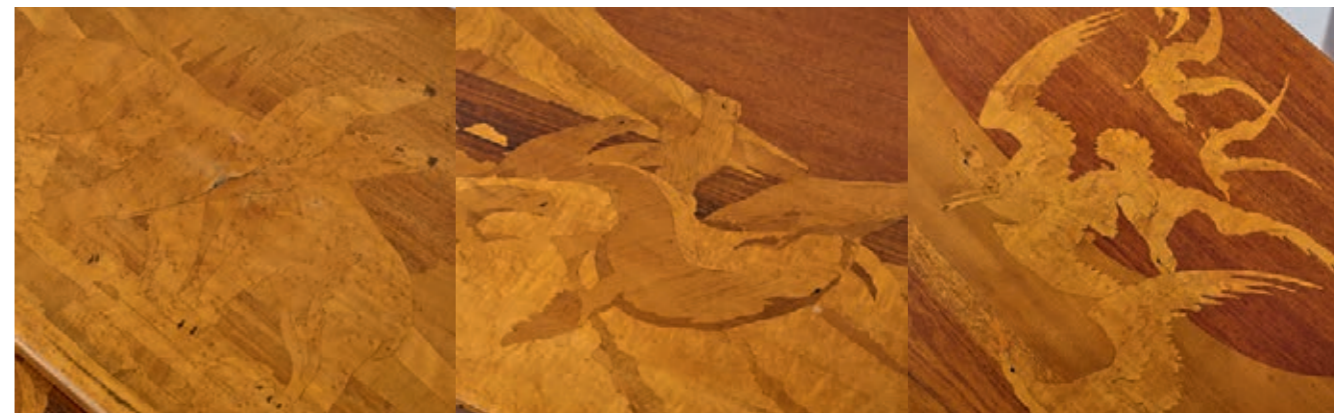


221



**222**  
**Emile Gallé**  
**Three nesting tables 'Paysage polaire', 1920s**

Box construction with closed side panels. H. 38.5 cm, 65 x 40 cm; H. 36 cm, 58 x 40 cm; H. 33.5 cm, 50.5 x 39.5 cm. Wooden construction with inlays in various woods, depicting polar bears, seals and seagulls and a polar landscape. Each inlaid signed: Gallé (Japanese lettering).  
**€ 1.600 - 2.200**







223

**223**  
France  
Two armchairs, c. 1935

H. 68 cm, 70 x 93 cm. Mahogany, leather cream-colored.  
Restored.  
€ 3.500 - 4.500



224

**224**  
France  
Side table, 1930s

H. 55.5 cm, Ø 60 cm. Wood, painted black, brass squares.  
€ 1.000 - 1.500

**225**  
Jacques Adnet  
Mobile bar, 1930-35

H. 78 cm, 85.5 x 50 cm. Execution: Adnet, Paris. Square metal, nickel-plated, mahogany veneer, mirror glass, plexiglass.  
In need of restoration.  
Hardy/Millet, Jacques Adnet, Paris 2009, p. 227.  
€ 1.500 - 2.500

**226**  
René Herbst (STYLE)  
Mobile bar, 1930-35

H. 77.5 cm, 76.5 x 35.5 - 73.5 cm (open). Square metal, metal tube, chrome-plated, glass, mirror glass.  
€ 1.500 - 2.500



225



226



227

**227**  
France  
Large fireside screen, c. 1900

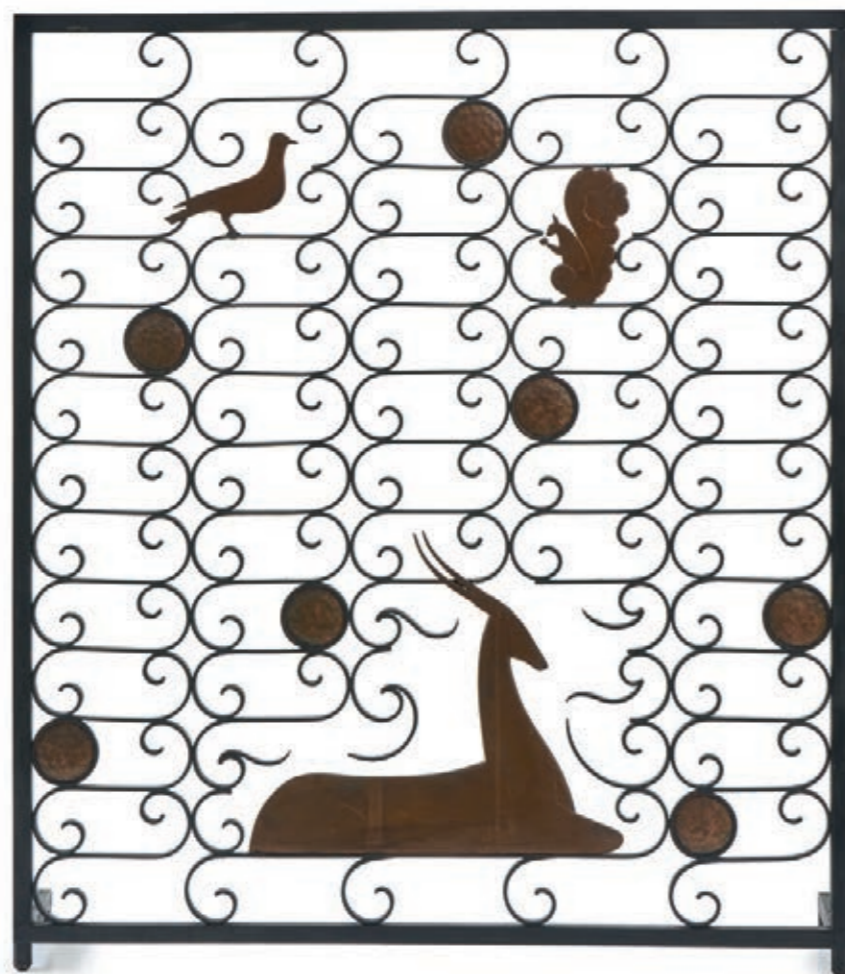
H. 115.5 cm, 190 x 35 cm. Wrought iron, sheet metal, latticework, brown patina. Stylized representation of a rural scene with undressed dancers and musicians. Unsigned.  
€ 4.800 - 6.000 (Standard taxation)

228

**Louis Katona, Paris**  
**Fireplace grate with animal**  
**figures, c. 1928**

H. 102.5 cm, 89 x 20 cm. Wrought iron, copper sheet. Unsigned.

€ 1.600 - 2.600



228

229

**Louis Katona, Paris**  
**Small fireplace grate, c. 1928**

H. 44.5 cm, 89.5 x 19.5 cm. Wrought iron, copper sheet. Unsigned.

€ 1.200 - 2.200



229



230

**England**  
**Hallstand, c. 1920**

H. 200 cm, 78 x 38.5 cm. Wrought iron, sheet metal, blackened, white marble. Marked: PL 261 AA, no. 3 (embossed).

€ 1.200 - 1.500 (Standard taxation)



231

**231**  
**Vilmos Zsolnay, Pécs**  
**Tile shelf, c. 1900**

H. 58 cm, 131 x 21 cm. Oak, earthenware, polychrome eosin glaze. Faint stamp.  
 € 2.500 - 3.500



232

**232**  
**Wenzel Hablik**  
**Side table, c. 1930**

H. 77 cm, 70.5 x 45 cm. Various types of wood, carved, with marquetry made from fruitwoods; Ebonized handles.  
 Provenance: Private ownership in Northern Germany, gifted to the owner's father by one of Wenzel Hablik's daughters.  
 € 2.000 - 3.000

**233**  
**Belgium**  
**Umbrella stand, c. 1904**

H. 74 cm. Brass, partially painted green and red. Private property Germany.  
 € 3.000 - 4.000



233



235

**234**  
**Wilhelm Kralik, Lenora (ATTR.)**  
**Vase, c. 1900-05**

H. 14.3 cm. Greenish glass, fused violet crushed glass, gold and petrol matt luster.  
 Cf. Hörtl (ed.), Das Böhmisches Glas, Vol. IV, Passau 1995, No. IV.273.  
 Image online.  
 € 350 - 450

**235**  
**Loetz, Klastersky Mlyn**  
**Two vases 'Papillon', 1898 and 'Asträa' 1900**

H. 6 cm. Green glass with rolled-in crumbs in silver yellow, 'creta Papillon', green and pearlescent matt luster. H. 10.3 cm. Colorless glass, Asträa decoration of amber-colored dots, background with dense silver-yellow fusions, 'candia silveriris', pearlescent matt luster.  
 € 450 - 550



237

**236**  
**Loetz, Klastersky Mlyn**  
**'Papillon' vase, c. 1898**

H. 25 cm. Green glass with rolled-in flakes in silver yellow, 'creta Papillon', matt green and pearlescent luster, lip with relief gold plating and three turquoise blue cabochons. Gilding slightly rubbed in places.  
 € 1.200 - 1.600

**237**  
**Loetz, Klastersky Mlyn**  
**Two 'Papillon' vases, c. 1898**

H. 16.9-17.3 cm. Cased glass, blue and colorless, blue-green 'cobalt Papillon' decor, pearlescent matt luster. One vase with a handwritten paper label on the bottom.  
 € 500 - 700

**238**  
**Loetz, Klastersky Mlyn**  
**'Asträa' vase with three handles, 1900**

H. 12.3 cm. Colorless glass, Astraea decoration of amber dots, background with dense silver-yellow fusions, 'candia silveriris', pearlescent matt luster. Signed in the ground out tear: Loetz Austria (engraved).  
 € 1.500 - 2.500



236



238



239



240

**239**

**Franz Hofstötter  
Inkwell, c. 1900**

H. 10.9 cm. Made by Loetz, Klastersky Mlyn for E. Bakalowits Sons, Vienna. Cased glass, clear, Phänomen pattern, Gre. 358, black with silver-yellow threads, yellow and red with silver-yellow threads. Combed, matt pearlescent luster. Hinged brass mounting. Cf. Ricke/Ploil, Lötzt Böhmisches Glas, Kunstmuseum Düsseldorf, 1989, vol. I, no. 183.  
**€ 2.500 - 3.500**

**240**

**Loetz, Klastersky Mlyn  
Flat 'Phänomen' vase, 1900**

H. 7.7 cm. Colorless glass, wavy, warped decor made of silver-yellow threads, candia-silberiris Phänomen Gre. 181, with a strong pearlescent matt luster.  
**€ 800 - 1.000**

**241**

**Loetz, Klastersky Mlyn  
'Phänomen' vase with mounting by  
Walter Scherf & Co., Nuremberg,  
c. 1900**

H. 17.5 cm. Cased glass, ruby red and colorless, densely covered in silvery yellow, combed decor, Phänomen Gre. 7966, strongly bluish silvery and matt pearlescent luster. Mounting made of gold-plated pewter. Marked: "OSIRIS" 576 (embossed).

Mergl/Ploil/Ricke, Lötzt Böhmisches Glas, Ostfildern 2003, p. 298, decor B 69.

**€ 2.000 - 3.000**

**242**

**Loetz, Klastersky Mlyn  
'Phänomen' vase with handles,  
1901**

H. 17.3 cm. Cased glass, colorless and lemon yellow, wavy silver-yellow threads, pearlescent matt lustre. Signed on the bottom: Loetz Austria (engraved).

**€ 1.800 - 2.400**



241



242



243

**243**

**Loetz, Klastersky Mlyn**  
**Small 'Phänomen' vase with foot by G.A. Scheid,**  
**Vienna, 1901**

Slender vase, tapering towards the top. Cut no. 85/3994. H. 11.6 cm. Executed for E. Bakalowits Sons, Vienna. Cased glass, colorless and orange, wavy silver-yellow threads, blue dots, pearlescent matt luster, candia Phänomen Gre. 1/72 round and blue dots. Mounting made of silver with green enamel and three lapis cabochons by GA Scheid, probably based on a design by Josef Maria Auchentaller. A total of 55 grams of silver. Marked: GAS, Diana head, additional mark (embossed).

Ricke/Ploil, Lötzt Böhmisches Glas, Vol. 1, Munich 1989, p. 333; ibid., Vol. 2, p. 293 (shape no. 85/3994); cf. Festi, Wiener Bijoux Josef Maria Auchentaller, Grado 2015, p. 72.

€ 2.500 - 3.500

**245**

**Koloman Moser (SURROUNDINGS)**  
**'Stripes and Spots' mounted vase,**  
**c. 1903**

H. 6.7 cm; H. 18.1 cm (overall). Made by Loetz, Klastersky Mlyn. Cased glass, colorless and opal white, applied threads and dots in green, strong matt pearlescent luster. Bronze mounting.

€ 1.400 - 1.800

**246**

**Loetz, Klastersky Mlyn**  
**Two 'Phänomen' lampshades, 1908**

H. 12.7 cm, Ø 10.5 cm. Colorless glass with dense papillon decoration, silver-yellow background, 'candia silberiris', pearlescent matt luster, Gre. 6276. Grid decoration, leaf green and yellow-green, petrol and pearlescent matt luster.

Chips to each of the lampshades at the base. Figurative mounting added in the 1970s or 1980s. H. 51 cm. Bronze, gilded. Signed: J. Causse (embossed).

€ 1.000 - 1.600



245



244

**244**

**Loetz, Klastersky Mlyn**  
**'Cytisus' vase, 1903**

H. 17.2 cm. Cased glass, yellow green (metal yellow) and clear, combed green threads, over it 'Cytisus' décor of silver-yellow dots, matt pearlescent luster.

€ 3.200 - 4.000



246



247

**247**  
**Loetz, Klustersky Mlyn**  
**'Melusin' vase, 1909/10**

H. 10.7 cm, Ø 15.5 cm. Cased glass, clear, between layers green and blue threads, engraved and gold-washed circles.

Ricke/Ploil, Lötzt Böhmisches Glas, Bd. 2, München 1989, S. 202, Schnitt-Nr. 6990.

€ 400 - 600

**248**  
**Loetz, Klustersky Mlyn**  
**Vase with three handles, c. 1916**

H. 9.5 cm. Cased glass, colorless and orange. Handle and lip dark violet, almost black. Flower painting in the style of Dagobert Peche.

Image online.

€ 400 - 500

**249**  
**Jutta Sika**  
**Decanter '134', c. 1900**

H. 28.2 cm. Execution: Meyr's nephew, Adolfov for Bakalowits Sons, Vienna. Colorless glass, 'Fiammetta' decor.

€ 800 - 1.000

**250**  
**Otto Prutscher**  
**Wine glass, c. 1907**

H. 21.3 cm. Execution: Meyr's nephew, Adolfov for Bakalowits Sons, Vienna. Cased glass, colorless and amber yellow, faceted and peeled cut.

Neuwirth, Glas Vol. I, Vienna 1985, p. 200 f.

€ 2.000 - 2.500

**251**  
**Otto Prutscher**  
**Wine glass, c. 1907**

H. 21 cm. Execution: Meyr's nephew, Adolfov for Bakalowits Sons, Vienna. Cased glass, colorless and dark blue, faceted and peeled cut.

Neuwirth, Glas Vol. I, Vienna 1985, p. 200 f.

€ 1.500 - 2.000

**252**  
**Meyr's nephew, Adolfov**  
**Three wine glasses, c. 1908**

H. 21-21.1 cm. Cased glass, colorless and green, faceted and peeled cut.

Cf. Hörtl (ed.), Das Böhmisches Glas, Vol. IV, Passau 1995, p. 146, No. 239.

€ 900 - 1.200

**253**  
**Meyr's nephew, Adolfov**  
**Wine glass, c. 1908**

H. 20.6 cm. Cased glass, colorless and dark blue, faceted and peeled reeds, grid decoration in green enamel.

€ 280 - 360



252

**254**  
**Meyr's nephew, Adolfov**  
**Wine glass, c. 1908**

H. 21 cm. Cased glass, colorless and green, faceted and peeled cut. Floral ribbon in colored enamel.

€ 280 - 360

**255**  
**Meyr's nephew, Adolfov**  
**Wine glass, c. 1908**

H. 20.8 cm. Cased glass, colorless and dark red, faceted and peeled cut. Ribbon of leaves in blue enamel with gold.

€ 280 - 360



249



250



251



253



254



255



256



257



258

**256**

**Josef Hoffmann; Reni Schaschl  
Bonbonniere, 1923-33**

H. 15.2 cm. Execution: Ludwig Moser, Karlsbad for Wiener Werkstätte. Colorless glass, opal white base. Incised decoration in white enamel, folk motifs with figures between flowering branches. Bottom marked: WW MOSER KARLSBAD CZECHO SLOVAKIA (etch stamp), 16 (engraved, inside and in the lid). WW photo archive of the MAK, inventory no. WWF 90-65-3.

€ 800 - 1.200

**257**

**Josef Hoffmann; Hilde Jesser  
Bonbonniere, 1923-33**

H. 15.6 cm. Execution: Johann Oertel & Co., Haida, for the Wiener Werkstätte. Clear glass, striped decoration in turquoise green with yellow etching. Bottom marked: WW (enameled). Remains of a paper label on the wall.

WW photo archive of the MAK, inventory no. WWF 90-82-5.

€ 800 - 1.200

**258**

**Josef Rindskopf Sons, Teplice  
Table light, 1900-05**

H. 41 cm. Cased glass, clear and milk green opalescent, seven applications, reddish and white, matt pearlescent luster. Foot and cover of burnished bronze.

€ 400 - 600



259

**259**

**Carl Schappel, Haida  
Two 'Borussia' vases, c. 1914**

H. 22.8 cm. Cased glass, colorless, opal white and black. Ground ball decoration.

Cf. Neuwirth, Glas 1905-1925, Vol. I, Vienna 1985, p. 298; cf. Pazaurek/Spiegel, Glas des 20. Jahrhunderts, Munich 1983, p. 132.

€ 700 - 800

**260**

**Vienna  
Goblet, 1915-20**

H. 11.8 cm. Clear glass, Enamel pattern. Mountains. Foot gilded. Chip to the base of the foot.

Image online.

€ 80 - 120



261

**Tiffany Studios, New York  
'Lotos' table light, c. 1903**

H. 77 cm, Ø 69 cm. Leaded opal glass predominantly in green and opal white tones. Lead copper plated and brownish patina. Bronze base, brown patina. Marked on the shade: TIFFANY STUDIOS NEW YORK, under-side of the foot TIFFANY STUDIOS NEW YORK 374 (embossed).

Cf. Koch, Louis C. Tiffany's Glass, Bronzes, Lamps, New York 1971, p. 124.

€ 20.000 - 30.000







262

**262**  
**Tiffany Studios, New York**  
**Two 'Three-Light Lily' table lights, 1904**

H. 30.5 cm. Favrite glass, amber yellow, gold and pearlescent matt luster. Signed: LCT (engraved). Bronze base, dark patinated. Marked: TIFFANY STUDIOS NEW YORK 319 (embossed).

Three lampshades replaced.

Cf. Koch, Louis C. Tiffany's Glass, Bronzes, Lamps, New York 1971, p. 142.

€ 2.000 - 3.000

**263**  
**Tiffany Studios, New York**  
**Table light, c. 1904**

H. 32 cm. Favrite glass, cased glass, colorless, amber brown and opal white, gold and pearlescent matt luster. Signed: LCT (engraved). Bronze base marked: TIFFANY STUDIOS NEW YORK 271 TGDCo mark (embossed).

Lampshade with cracks.

Cf. Koch, Louis C. Tiffany's Glass, Bronzes, Lamps, New York 1971, p. 124.

€ 1.200 - 1.600



263



**264**  
**Tiffany Studios, New York**  
**'18-light Lily Pond' floor light, c. 1904**

Flower-shaped umbrellas on a bundled and twisted shaft and a base decorated with water lily leaves and flowers and a frog. H. 152 cm. Favrite glass, amber yellow, gold and pearlescent matt luster. Signed LCT (engraved). Bronze, dark patinated. Marked: TIFFANY STUDIOS NEW YORK (embossed).

Lampshades mostly replaced.

Cf. Koch, Louis C. Tiffany's Glass, Bronzes, Lamps, New York 1971, p. 142.

€ 4.000 - 6.000

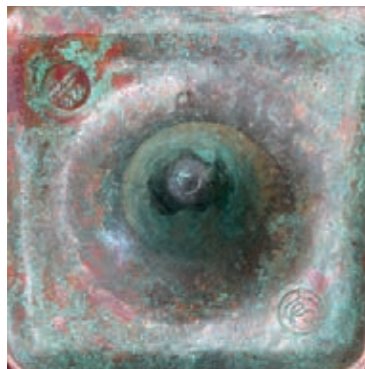


**265**  
**Tiffany Studios, New York**  
**'Jeweled Blossom' table light, c. 1907**

Mushroom shape. H. 55 cm, Ø 40.2 cm. Leaded opal glass with some white cabochons, mainly in green and opal white tones. Ribbons with stylized flowers. Lead copper plated and brownish patina. Bronze base, brown and green patinated. Inscribed on the inner edge of the shade: TIFFANY STUDIOS NEW YORK 1595, underside of the foot TIFFANY STUDIOS NEW YORK 444, signet TS (punched).

Five replaced plates and slight damage to the glass.

€ 10.000 - 15.000





266

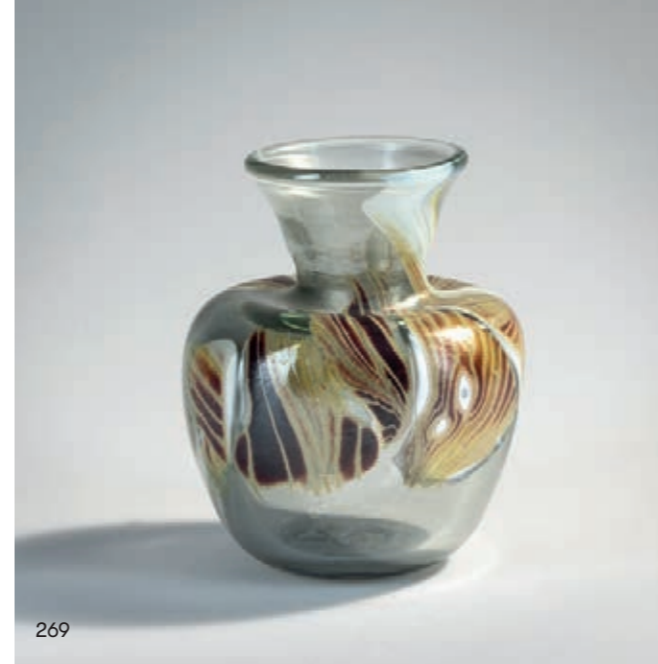


267



268

- 266**  
**Tiffany Studios, New York**  
**Vase with enameled copper base, 1915-20**  
 H. 31 cm. Clear glass, matt gold and pearlescent luster. Copper foot with polychromatic enamel. Marked: LCT LOUIS C. TIFFANYS FURNACES INC. 150.  
**€ 600 - 800**
- 267**  
**Louis C. Tiffany**  
**Goblet, c. 1893**  
 H. 31.2 cm. So-called 'Favrile' glass, cased glass, colorless, opal white and green, pearlescent matt luster. Signed: LC Tiffany - Favrile 1888 (engraved).  
**€ 700 - 900**
- 268**  
**Louis C. Tiffany, New York**  
**Vase, 1894**  
 H. 24.5 cm. Cased glass, clear, white, stripe pattern, silver-yellow circles and dots, strong matt gold- and pearlescent luster. Signed: Louis C. Tiffany A 175 (engraved).  
**€ 1.200 - 2.200**



269

- 269**  
**Louis C. Tiffany, New York**  
**Vase, c. 1900**  
 H. 13.8 cm. Clear glass, red-brown and white striped leaf-like overlays. Bottom signed: LC Tiffany-Favrile 436 (engraved).  
**€ 350 - 450**



270

- 270**  
**Louis C. Tiffany, New York**  
**Vase, 1905**  
 H. 35.4 cm. Clear glass, partially milk white, combed green thread pattern. Underside of foot with strong metallic luster, bowl with matt pearlescent luster. Signed: L. C. T. W 8833 (engraved).  
 Cf. exh. cat. Louis C. Tiffany, Meisterwerke des amerikanischen Jugendstils, Museum für Kunst und Gewerbe, Hamburg 1999, p. 108 ff.  
**€ 1.500 - 2.500**

- 271**  
**Louis C. Tiffany, New York**  
**Cut agate vase, 1907**  
 H. 22.8 cm. Cased glass, yellow, clear and amber. Reworked with the wheel, leaves. Signed: L.C. Tiffany Favrile 1013 B (engraved).  
 Cf. Revi, American Art nouveau Glass, Nashville 1981, pl. p. 112.  
**€ 1.200 - 2.200**



271



272

**Louis C. Tiffany, New York  
Goblet, 1907**

H. 26 cm. So-called 'Favrile' glass, cased glass, colorless, opal white and amber, gold and pearlescent matt luster. Signed: LC Tiffany - Favrile 4329 B (engraved), original manufacturer's label.

€ 700 - 900

273

**Louis C. Tiffany, New York  
Vase with bronze foot, c. 1910-15**

H. 26.3 cm. Cased glass, clear, fused green, blue and silver-yellow crushed glass, strong matt gold and pearlescent luster, rough surface with air bubbles. Bottom signed: L.C.T. (...) 1 (engraved). Bronze base with brown patina.

€ 1.200 - 2.200

274

**Louis C. Tiffany, New York  
'Leaves and Vine' Vase, 1912**

H. 6.8 cm. Amber glass, 'Paperweight' decoration of green leaves and stems, with a strong gold and pearlescent luster. Bottom signed: LC Tiffany Favrile 2125 G (engraved).

€ 600 - 800

272

275

**Handel & Co., Meriden, Connecticut  
Table lamp, 1910-15**

H. 45 cm, Ø 34 cm. Leaded opal glass shade, colorful flowers and leaves. Inscribed on a plaque: HANDEL. Patinated bronze base with thistle decoration. Signed on the bottom of the stand: HANDEL.

€ 1.200 - 1.600

276

**Trevaise, Sandwich  
Vase, 1907**

H. 28.7 cm. Cased glass, milk white and clear, combed pattern of silver-yellow threads, eight heart-shaped green leaves, strong matt pearlescent luster. Signed: L. C. T. 3575 B (engraved, presumed added), LCT label.

€ 1.500 - 2.500



275



273



274



276

277

**England  
Three Flacons, c. 1869**

H. 9 - 10.5 cm. Cased glass, colorless and cobalt blue, cut. Silver and gilded hinged stoppers. Marked: Faint embossing (1x), dedication with year 1869 (1x). Image online.

€ 200 - 300



278

**278**  
**Arsall, Vereinigte Lausitzer Glashüttenwerke, Weisswasser**  
**See 'Iris', 1921-29**

H. 29.9 cm. Cased glass, colorless, frosted, green and violet. Etched decor with irises. Signed: Arsall (raised).  
€ 500 - 600

**279**  
**Max Rade (ATTR.)**  
**Vase, c. 1898/99**

H. 22.6 cm. Execution: Fritz Heckert, Petersdorf. Glass, green, slightly iridescent, 'Cypren' decoration in polychrome enamel.  
€ 400 - 500

**280**  
**Otto Tamm**  
**Decorative bowl, 1901**

H. 5.3 cm, Ø 25.5 cm. Execution: Fritz Heckert, Petersdorf. Glass, colorless, rolled-in silver-yellow crumbs and combed violet threads, gold and pearlescent matt luster.  
Cf. Zelasko, Fritz Heckert, Passau 2012, p. 189.  
€ 450 - 550

**281**  
**Ida Paulin, Augsburg**  
**Goblet, c1928**

H. 9.6 cm. Clear glass. Floral pattern, green and yellow enamel. Signed: IP.  
Tiny chip to the foot.  
Image online.  
€ 80 - 100



279



280

**282**  
**Benedikt von Poschinger, Frauenau**  
**Cheese dome, c. 1900**

H. 17.5 cm, Ø 25 cm. Colorless glass, applied threads and nubs in green and red.  
Cf. Höltl (ed.), Böhmisches Glas, Vol. V, Passau 1995, No. V.75 f.  
Image online.  
€ 350 - 450



283

**283**  
**Carl Georg von Reichenbach**  
**Bowl, 1905-10**

H. 6.8 cm. Execution: Benedikt von Poschinger, Oberwieselau. Cased glass, colorless and opaque orange, applied dark purple threads and four opaque purple cabochons as well as twelve balls.  
Cf. Höltl (ed.), Böhmisches Glas, Vol. V, Passau 1995, No. V.47.  
€ 600 - 800

**284**  
**Rheinische Glashütten, Cologne-Ehrenfeld**  
**Vase 'Diaskop', c. 1900**

H. 18.7 cm. Glass, colorless, opal white, pink and blue. Landscape decor with trees. Marked on the bottom: Ehrenfeld Diaskop (engraved).  
€ 500 - 600

**285**  
**Adolf Beckert (ATTR.)**  
**Vase, c. 1920**

H. 20.4 cm. Execution: Steinschönau Glass School. Colorless glass, stylized floral decor in black solder and gold.  
Cf. Höltl (ed.), Das Böhmisches Glas, Vol. IV, Passau 1995, p. 241.  
€ 500 - 600



285



284

**286**  
**Bruno Mauder**  
**Tall vase, c. 1923**

H. 24.3 cm. Execution: Zwiesel Glass School. Colorless glass, decorated with three different women's heads in black solder and gold. Marked: FZ 1026 (gold, handwritten).  
€ 1.600 - 2.200



286



## IMPRESS

### MANAGING DIRECTOR AND AUCTIONEER:

Askan Quittenbaum  
+49 89 273702-113  
a.quittenbaum@quittenbaum.de

### DEPUTY MANAGING DIRECTOR:

Dr. Claudia Quittenbaum  
+49 89 273702-111  
c.quittenbaum@quittenbaum.de

### SPECIALISTS:

Askan Quittenbaum  
+49 89 273702-113  
a.quittenbaum@quittenbaum.de

Faridah Younès M.A.  
+49 89 273702-115  
f.younes@quittenbaum.de

Nadine Becker M.A.  
+49 89 273702-10  
n.becker@quittenbaum.de

### BOOK KEEPING AND CATALOGUE-ORDER:

Annette Ehrenhardt  
+49 89 273702-117  
buchhaltung@quittenbaum.de

Ava Boll

+49 89 273702-120  
a.boll@quittenbaum.de

### LOGISTIC AND SHIPPING:

Dirk Driemeyer  
+49 89 273702-112  
d.driemeyer@quittenbaum.de

M2 Logistik  
+49 8121 223015  
service@m2logistik.de

Mail Boxes Etc.  
MBE Lippl Business Service  
+49 8131 37 99 132  
antique-muc@mbe-dachau.de

### PHOTOGRAPHS:

Jochen Splett  
Mirco Taliercio

### DESIGN:

Daniela Paringer,  
design & print GbR

### PRODUCTION AND PRINT:

Peschke Solutions GmbH,  
München





QUITTENBAUM  
Kunstauktionen München

QUITTENBAUM Kunstauktionen GmbH  
Theresienstrasse 60 · D-80333 Munich  
Phone 089-27370210 · Fax 089-273702122  
info@quittenbaum.de · www.quittenbaum.de