

ART NOUVEAU ART DECO PART II

Auction 168 B · 24 May 2023





ART NOUVEAU ART DECO

BRONZE - FURNITURE
CERAMIC - METAL

AUCTION 168 B

WEDNESDAY, 24 MAY 2023

3 P.M.

**PREVIEW:
THERESIENSTR. 60**

Wednesday	17.05.	10 a.m. - 6 p.m.
Friday	19.05.	10 a.m. - 6 p.m.
Saturday	20.05.	1 p.m. - 5 p.m.
Sunday	21.05.	1 p.m. - 5 p.m.
Monday	22.05.	10 a.m. - 6 p.m.

**QUITTENBAUM
Kunstauktionen GmbH**

Managing Director: Askan Quittenbaum
Theresienstrasse 60 · D-80333 Munich
Phone (+49) 89-27 37 02 10
Fax (+49) 89-27 37 02 122
E-Mail info@quittenbaum.de
Opening hours: Tues.-Fri. 3-6 p.m.
by appointment



Mitglied der Initiative
Datenbank
kritischer Werke



Bundesverband Deutscher Kunstversteigerer e.V.







323

323

**Franz Xaver Bergmann
Erotica 'Sultan', c. 1900**

H. 12 cm. Bronze, cold painted. Marked on the back of the coat: Workshop signet Nam Greb (embossed), bottom: workshop signet.
€ 600 - 700



324

324

**Franz Xaver Bergmann
'Cleopatra', c. 1900**

H. 21.8 cm (with base). Bronze, patinated. Skirt hem marked: Workshop signet, Nam Greb (embossed). Onyx base.
€ 1.400 - 1.600

325

**Victor Bruyneeel
Female bust, c. 1900**

H. 25.7 cm (with base). Bronze, brown patina. Verso signed: VBruyneeel Paris (embossed). Black wooden base.

Image online.

€ 250 - 350

326

**Alexandre Charpentier
Plaque 'Allegorie de la musique', c. 1900**

8.2 x 15 cm; H. 2.8 cm, 16.7 x 10 cm (with base). Cast bronze.

Marked: artist's initials AC, 11 (embossed). Gray marble base.

Image online.

€ 400 - 500

327

**Demètre H. Chiparus
Ivory figurine 'L'Ecolière au cartable', c. 1920**

Young girl in a high-necked coat with a cap, carrying a briefcase in her right hand, in a stride. H. 19 cm (with base). Gilded bronze, ivory face. Mantle signed on the back: 8, DH Chiparus (bossed). Under the skirt: 2220. Onyx base.

Shayo, Chiparus, Woodbridge 2019, p. 275.

An EC certificate has been issued for this lot by the Department for Climate and Environmental Protection of the City of Munich, which allows objects with ivory to be marketed within the European Union.

€ 2.000 - 2.500



327



328

**Demètre H. Chiparus
'Accident de Chasse', c. 1925**

Young woman in antique clothing, seated, tending to a dog's paw. H. 25 cm, 42.2 x 219 cm (with base). Bronze, dark patina, partially silver-plated. Natural plinth signed: DH Chiparus (bossed). Black-gray marble base with plaque: ACCIDENT de CHASSE Par DH Chiparus (Récompensé au Salon).

Shayo, Chiparus, Woodbridge 2019, p. 238.

€ 5.000 - 6.000

329

**Demètre H. Chiparus
'Hindu Dancer', c. 1925**

H. 59.5 cm (with base). Bronze, patinated and cold painted. Base signed: DH Chiparus, Etling Paris (incised). Black and gold marble base.

Catley, Art Deco and Other Figures, London 1979, p. 87; Shayo, Chiparus, London 1999, p. 121.

€ 7.000 - 9.000





330

330
Demètre H. Chiparus
Panther, c. 1925

H. 34 cm, 74.7 x 15.5 cm (with base). Cast metal, patinated green. Base signed: DH Chiparus (incised). Composite base made of gray-white and black-gold marble.
€ 1.700 - 2.000

331
Demètre H. Chiparus
'The Bronze Age', c. 1928

H. 53 cm, 75 x 16 cm (with base). Bronze, brown/green patina. Base signed: DH Chiparus (incised). Brown onyx base.
 Shayo, Chiparus, New York 1999, p. 65.
€ 2.200 - 2.800



331



332

Demètre H. Chiparus
'Cleopatra', c. 1928

H. 33 cm, 55 x 20.5 cm. Bronze, cold painted. Signed on the side: DH Chiparus (embossed). Brown marble base.

Shayo, Chiparus, Woodbridge 2019, p. 138.

€ 15.000 - 25.000



333

Claire J. R. Colinet
'Danseuse de Carthage', 1920s

H. 53.5 cm, 62 x 20 cm. Bronze. Plinth signed: Cl JR Colinet (embossed). Orange-yellow marble base.

Catley, Art Deco and other figures, Woodbridge 1998, p. 115.

€ 7.000 - 9.000

334

Henri Coutheillas
'Tendresse', c. 1890

H. 27 cm, 39 x 13 cm. Bronze, silver-plated Signed: H. Coutheillas, Godard Père Fondateurs Paris (embossed).

€ 800 - 1.200





335

335

Frederic J. Debon

Tall decorative jug 'Vigne', c. 1902

H. 47 cm. Bronze, dark patina. Signed above the stand: Debon, Susse Fres Edts Paris, BRONZE (embossed). Wooden base.

€ 1.600 - 2.600



336

336

Joë Descomps

Dancer, 1920s

H. 38 cm. Bronze, dark patina and gilding. Signed: Joe Descomps. Marked: BRONZE (embossed).

€ 2.200 - 3.200

337

Lawrence Dupuy

'Cymbals', c. 1915

H. 61.3 cm. Bronze, dark green patina. Base signed: L. Dupuy, Susse Fres Edts Paris, BRONZE (embossed).

Berman, Bronzes, vol. 3, Chicago 1977, No. 1927.

€ 2.000 - 3.000



337



338

338
George Flamand
Figurative table light, c. 1910

H. 22.5 cm. Bronze, dark patina, partly gilded. Signed: Flamand (embossed).
 Electrified.
 € 6.000 - 8.000

339
France
Female nude c. 1895

H. 20.7 cm (with base). Bronze. Unsigned. White-brown marble base.
 Image online.
 € 400 - 500

340

Maurice Guiraud-Rivière
'Stella', c. 1925

Nude female figure with feather turban, in a pose on one leg juggling a ball. H. 64 cm (with base). Bronze, dark patina, marble ball. Hexagon plinth signed: GUIRAUD-RIVIERE, ETLING PARIS (bossed).

Catley, Art Deco and other figures, Woodbridge 1998, p. 175.

€ 8.000 - 9.000 (Standard Taxation)

341

Richard W. Lange
'Snake Dancer', c. 1900

Nude female figure with a snake coiled around her neck. H. 27 cm (with base). Bronze. Plinth signed: Richard W. Lange (embossed). Black marble base.

€ 1.300 - 1.900



341



340



342

342

Agathon Léonard (alias Léonard van Weydeveldt)
'Danseuse au Cothurne' from the 'le Jeu de l'Echarpe' centerpiece, 1898

Female figure in a flowing robe, dancing, adjusting her sandal. H. 53 cm. Bronze, gilded. Signed: A. Leonard Sculp, foundry mark of Susse Frères Paris, M for Mangenot (chiseler).

According to Böstge/Heran, only seven copies of the 'Danseuse au Cothurne' were produced.

Böstge/Héran, Agathon Léonard Le geste Art Nouveau, Paris 2003, S. 49-75, esp. p. 60 f., p. 66; Cat. Art Nouveau, Landesmuseum Karlsruhe 1987, no. 4-5; cat. Die Jugendstilsammlung, Museum für Kunst und Gewerbe Hamburg, vol. 3, no. 1308, Justus Brinckmann acquired the entire centerpiece executed by Sèvres at the Paris World Exhibition in 1900, the Hamburg Museum also owns two Bossetti of the sash dancers, cat. no. 1307; Cadet, Susse Frères, Paris 1992, p. 195 (Sales cat. from 1905).

€ 22.000 - 28.000

343

Agathon Leonard (aka Leonard van Weydeveldt)
'Danseuse à la Marguerite' from the 'le Jeu de l'Echarpe' centerpiece, 1898

Female figure in a flowing robe dancing, mantilla and marguerite flower in her hair. H. 51 cm. Bronze, gilded. Signed: A. Leonard sculp, foundry mark by Susse Frères, Paris, M for the chaser Mangenot.

Böstge/Héran, Agathon Léonard Le geste Art Nouveau, Paris 2003, pp. 49-75, esp. p. 60 f., p. 69; Cadet, Susse Frères, Paris 1992, p. 195 (Sales cat. from 1905).

€ 18.000 - 26.000



343

The 'Jeu de l'Echarpe'

Agathon Léonard first conceived his 'Jeu de l'Echarpe' as a series of wall reliefs to adorn the foyer of a theatre. The then director of the Sèvres porcelain manufactory, Alexandre Sandier, saw the models for the wall decoration, initially planned with ten dancers, at the exhibition of the Société nationale des Beaux-Arts in Paris in 1897 and was so enthusiastic that he immediately commissioned the artist to realise his design as a multi-piece centerpiece. In 1899, the centerpiece consisting of dancers, musicians and torchbearers was presented with twelve figures and extended by three more by 1901. The female figures, designed with great attention to detail, still make the viewer feel the dawn of a new attitude to life, which is expressed in the flowing, non-constricting dresses of the young ladies, their free movements and the restrained ornamentation. Several famous dancers were considered as models for the figures, including Cléo de Mérode (1875-1966) and Sarah Bernhardt (1844-1923) as well as the much portrayed Loie Fuller (1862-1928).

The Susse Frères foundry secured the rights to produce the bronze centerpiece as early as 1901. In 1901, the group was presented at the Salon of the Société. It was executed in three different sizes, some of them also in chryselephantine or silver-plated. Susse is said to have executed 100-130 examples of the figures by 1935. a



344

Ferdinand Preiss
Ivory figurine 'Cabaret Girl', c. 1925

The dancer Nelova from the troupe 'Rasch Girls'. In a tight leotard with a cap, in a pose with arms outstretched. H. 31 cm, H. 38.3 cm (with base). Bronze, cold painted, head, shoulders and arms of carved ivory, partially painted. Plinth marked: foundry mark Preiss & Kassler, Berlin. Green onyx base.

Shayo, Ferdinand Preiss, Woodbridge 2005, p. 54, p. 171.

An EC certificate has been issued for this lot by the Department for Climate and Environmental Protection of the City of Munich, which allows objects with ivory to be marketed within the European Union.

€ 22.000 - 28.000



345

Ferdinand Preiss

Ivory figurine 'Con Brio', c. 1925

Dancer in two-piece suit with hood and short feather in pose standing on one leg, arms outstretched. H. 27.7 cm, H. 33 cm (with base). Carved ivory, partly colored painted, hood, two-piece and plinth partly cold-painted bronze. Plinth signed: F. Preiss (bossed). Green onyx base.

Shayo, Ferdinand Preiss, Woodbridge 2005, p. 174, p. 49, reproduction of a contemporary photograph of the 1930 Leipzig Fair, Preiss & Kassler stand; Catley, Art Deco and other figures, Woodbridge 1998, p. 283; Duncan, Art Deco Sculpture, London 2016, p. 207.

An EC certificate has been issued for this lot by the Department for Climate and Environmental Protection of the City of Munich, which allows objects with ivory to be marketed within the European Union.

€ 16.000 - 22.000



346

346

**Paul Philippe
Ivory figurine 'Violin Player', c.
1920**

H. 30 cm, 24.7 x 12.9 cm (incl. base). Cold painted bronze, head, collar, arms, violin, bow and feet of carved ivory, partially colored. Back of dress signed: Philippe (sic!)

(embossed). Onyx base.

Bow restored and broken again.

Cf. Shayo, Ferdinand Preiss, Woodbridge 2005, p. 49, photo of the Preiss & Kassler booth at the Leipzig trade fair, 1930.

An EC certificate has been issued for this lot by the Department for Climate and Environmental Protection of the City of Munich, which allows objects with ivory to be marketed within the European Union.

€ 13.000 - 15.000

347

**Adolf Joseph Pohl
'Study Head', 1915**

H. 40.5 cm (with base). Bronze, black patina. Signed on the neck: A. Pohle (sic!). Light marble base with paper label, inscribed: Pohl Adolf, Studienkopf 1915.

Base with chips and crack.

€ 3.800 - 4.200

348

**Luighi Salesio
Woman with powder compact,
c. 1900**

H. 49 cm. Bronze. Unsigned.

€ 1.800 - 2.500

349

**Hélène Sibeed
Figurative table light, c. 1900**

H. 31 cm. Bronze, gilded. Signed: Sibeed (embossed). Cased glass lampshade, pink and opal white.

€ 1.800 - 2.200

350

**Franz Klein (AFTER)
Ludwig van Beethoven**

H. 31 cm (with base). Marble, bronze laurel wreath. Mounted on a gray stone base. Marked: 515 4 (embossed).

After the life mask by Franz Klein, 1812, which is now in the Beethoven-Haus, Bonn. Franz von Stuck used the same model for several portraits of Beethoven. The Kunstanstalt Schumacher & Co., Osterode comes into question as the caster (execution: prior to 1929).

€ 800 - 900



347



351
Eugen Wagner (ATTR.)
Female nude, c. 1910

H. 39.8 cm (with base). Plinth signed: O. Wagner (embossed). Bronze, polished, auburn marble base.
€ 1.200 - 1.600



351



349



350



352

352

**Bruno Zach
'Fencer', c.1925**

Lady in a short skirt in a defiant pose with a foil in her right hand. H. 73 cm (with base). Bronze, dark brown patina. Plinth signed: Bruno Zach (bossed). Black marble base.

€ 14.000 - 18.000

353

**Hagenauer, Vienna
Female gondolier, 1950s**

H. 17.7 cm, 33.5 x 2.5 cm. Brass, partially black patinated. Marked: Handmade HAGENAUER WIEN MADE IN VIENNA AUSTRIA wHw (embossed).

Rod broken off.

€ 500 - 700



353



354

**Edgar Brandt
Mantle clock, c. 1925**

H. 30 cm, 29.3 x 15 cm (with base). Sheet metal, wrought iron, dark patina. Plinth signed: E. BRANDT, FRANCE (embossed). Black and gold marble base.

Mechanical movement with key, by Jauricoste, Paris.

€ 8.000 - 12.000 (Standard Taxation)

355

Carlo Bugatti

Wall shelf, 1890-95

H. 96 cm, 63 x 21 cm. Wood, stained dark and ebonised, richly carved, inlaid with pewter and bone in the Moorish style. Copper sheet.

Exh. cat. Die Bugattis, Museum für Kunst und Gewerbe, Hamburg 1983, p. 109, C 68.

€ 6.000 - 8.000 (Standard Taxation)

356

Germany

Biedermeier wall mirror

H. 108 cm, 44 x 3 cm. Carved walnut, applied carved stucco and staghorn leaves, two candlestick arms made of tubular brass and sheet brass, burnished, mirror glass.

Repaired.

Image online.

€ 200 - 300



357

Germany

Ceiling light, c. 1900

H. 52.5 cm, Ø 71 cm. Brass, open worked, white glass.

Height variable due to the cable.

€ 1.800 - 2.400

358

Germany

Table light, c. 1902

H. 32.5 cm, Ø 14 cm. Smoke brown glass, partially matted. Brass base.

€ 800 - 1.200



357



359

359

**Otto Eckmann (ATTR.)
Pendant light, c. 1900**

H. 41 cm. Bronze, glass, ribbed, colorless and opal white.
Cf. DK 1 (1898), p. 20.

€ 1.200 - 1.600

360

**England
Hallstand, c. 1920**

H. 200 cm, 78 x 38.5 cm. Wrought iron, sheet metal,
blackened, white marble. Marked: PL 261 AA, no. 3
(embossed).

€ 1.500 - 2.000 (Standard Taxation)



360



361

361

France

Table light 'Jeune femme aux Gui', c. 1900

H. 74 cm. Bronze, brown and green patina, white glass.
Not electrified. The table light was mounted on a banister.

€ 1.800 - 2.400



362

362

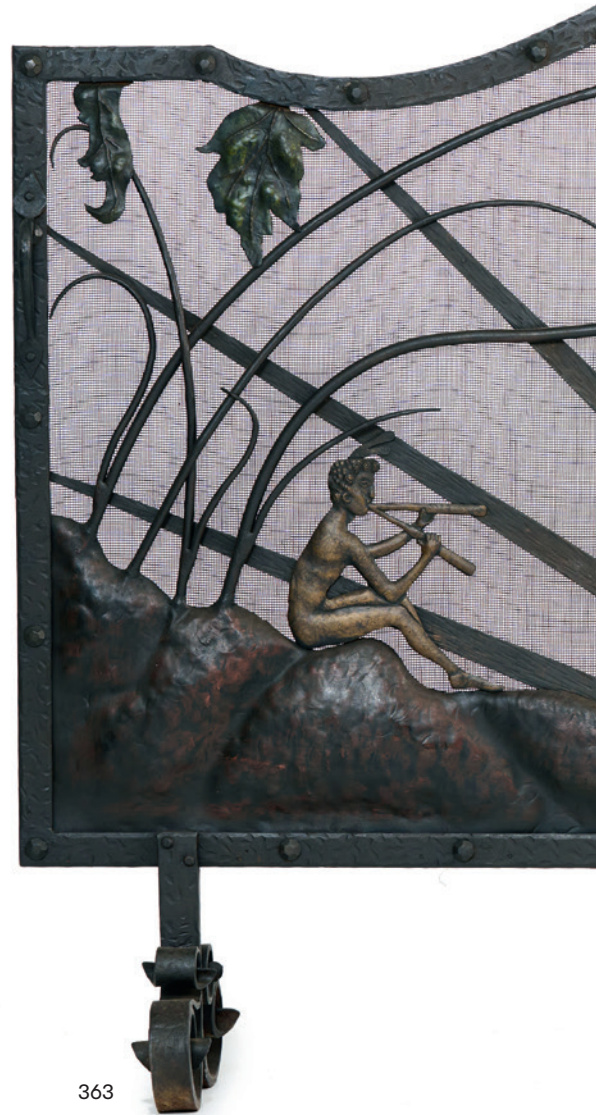
France

Table light, c. 1900

H. 64.5 cm, Ø 45 cm. Bronze, dark patina, shaft shaped like a mushroom stalk surrounded by three other mushrooms. Champagne-colored artificial silk shade.

Screen presumably replaced. Electrification renewed.

€ 800 - 1.200



363

363

France

Large fireside screen, c. 1900

H. 115.5 cm, 190 x 35 cm. Wrought iron, sheet metal, lattice-work, brown patina. Stylized representation of a rural scene with undressed dancers and musicians. Unsigned.

€ 6.000 - 8.000 (Standard Taxation)





364

Emile Gallé, Nancy
Tea table 'Jeanne of Arc', 1889

H. 71.5 cm, 52 x 50 cm. Carved walnut, marquetry with various woods. Depiction of Joan of Arc as a shepherdess. Signed: Emile Gallé Nancy (branding).

€ 5.000 - 6.000



365

Emile Gallé, Nancy
Side chair, c. 1889

H. 106 cm, 49 x 49 cm. Walnut, carved,
brown leather. Sign.: GALLE (japonized,
carved).

€ 7.000 - 9.000





366

**Emile Gallé, Nancy
Tea table, c. 1895**

Leaf-like curved tabletop on branch-like connected legs, second, rectangular shelf fitted, the elaborately carved frame construction as sprouting water lily shoots with foliage and flowers, the upper plate with an inlaid depiction of a pond landscape with water lilies and a whirring dragonfly, the lower one with water lilies. H. 75cm, 58x51.5cm. Walnut, carved, marquetry in different woods with leaves and flowers. Signed: Gallé (marquetry).

€ 15.000 - 20.000



367

**Emile Gallé, Nancy
Stand 'Marronniers', c. 1898**

H. 100.5 cm, 38 x 38 cm. Carved walnut, marquetry in various woods with chestnut leaves and flowers. Second tray signed: Gallé (inlaid).

Cat. Nancy 1900, Munich City Museum, Mainz 1980, no. 333.

€ 3.000 - 4.000



368

**Emile Gallé, Nancy
Box 'Rosier', 1900-10**

H. 7 cm, Ø 25.5 cm. Walnut, marquetry in various woods. Cover with rosebush and a flying butterfly. Sign.: GALLE (japonized, inlaid).

€ 2.000 - 3.000



368

369

Louis Majorelle, Nancy
'Marrons' desk, 1897/98

Rectangular table top on four turned saber legs, one drawer. H. 74 cm, 84 x 64 cm. Walnut veneer, carved, table top with marquetry in different woods. Unsigned.

Cat. Nancy 1900, Munich City Museum, Mainz 1980, no. 352, reference to identical, signed example at the Museum für Kunst und Gewerbe, Hamburg.

€ 3.000 - 4.000





370

**Louis Majorelle, Nancy
Tea table, c. 1900**

H. 75 cm, 70-81 x 53.5 cm. Carved walnut, marquetry in various woods. Top table top with fruit blossoms, the bottom with chestnut fruits and leaves. Signed: Louis Majorelle Nancy (branding). Bronze handles and cuffs.

€ 6.000 - 8.000



371

371
Georges Leleu
Table light, c. 1925

H. 31.5 cm. Bronze with patina; Twig and flower relief. Base signed.: G. Leleu (embossed). Cased glass shade with powder inclusions in red and dark blue.

€ 500 - 600



372

373
Josef Hoffmann
4 nesting tables '986', c. 1905

H. 64.5 cm, 33.5 x 27.5 - H. 74.5 cm, 60.5 x 43.5 cm. Made by J. & J. Kohn, Vienna. Bent beech wood and plywood, stained black. Smallest table marked: remains of a manufacturer's label.

J & J. Kohn, The Catalog of 1916, reprint, Munich 1980, p. 79.

€ 1.800 - 2.600

372
K. & K. Hof-Silber- und Chinasilberwarenfabrik
Moritz Hacker
'Nautilus' table light with inkwork, c. 1900

On a freely formed floor plan, an elf swimming in a lake with three-dimensional arrowhead and an inkwell in the form of a water lily. Lid with a bird as a knob. Nautilus as shade in arrowhead mounting. H. 27 cm, 37 x 18.5 cm. Brass, silver plated. Marked: workshop signet (embossed).

€ 2.500 - 3.000

374
Joseph Maria Olbrich (ATTR.)
Flower column, c. 1900

H. 114.5 cm, 35 x 34 cm. Different kinds of wood, carved.

€ 900 - 1.200



373



374



375

375

Max Schmidt

Coffee table 'à la Loos', c. 1905

H. 65 cm, Ø 90 cm. Made by Friedrich Otto Schmidt, Vienna. Beech wood, stained dark, sheet brass, glass.

Adolf Loos was close friends with the heads of the carpentry workshop, FO Schmidt, Max and Leo Schmidt. Max Schmidt was heavily influenced by Loos' theories in his designs.

Cf. Ottillinger, Adolf Loos, Vienna 1994, pp. 71-80.

€ 2.000 - 3.000

376

Bruno Paul

Grandfather clock, 1903/04

H. 184 cm, 31 x 20 cm. Made by Vereinigte Werkstätten, Munich. Mahogany, marquetry in different woods, sheet metal, brass. Marked: VW (2x), 1130 (embossed).

Cf. exh. cat. Bruno Paul, Munich Municipal Museum, Munich 1992, no. 219.

€ 5.000 - 6.000



376



377



378



379

377

**Luc Lanel
Champagne cooler, c. 1935**

H. 20.8 cm. Made by Christofle & Cie., Paris. Nickel silver, silver plated. Marked: Scales, CHRISTOFLE, knight, 30 (embossed).

€ 500 - 700

378

**Carl Deffner, Esslingen
Vase with handles, c. 1905**

H. 30.3 cm. Copper. Marked: workshop signet, A (embossed).

€ 500 - 700

379

**Jean Despres, Avallon
Candlestick, 1965**

Five lights. H. 22.5 cm, Ø 32.5 cm. Metal, silver-plated, hammered structure. Bottom signed: J. Despres 1965 (engraved).

Cf. Bröhan Museum Berlin, Metallkunst der Moderne, Vol. VI., Berlin 2001, no. 371.

€ 4.500 - 5.500

380

**Germany
17 pairs of door handles with 34 panels, c. 1905**

L. 11.4 cm; 23.4 x 4.5 cm. Bronze. Marked: GES.GESCH, 376(...) (embossed).

€ 2.500 - 3.500

381

**Munich
Mounted vase, c. 1905**

H. 37.5 cm. Cast brass, cut glass insert. Marked: 6 (3x, embossed).

€ 650 - 850

382

**Germany
Cookie jar, 1920s**

H. 14.9-24.8 cm. Glass, cut, metal, nickel-plated. Unsigned.

Image online.

€ 350 - 450



380



381



384



383

**Erhard & Sons, Schwäbisch Gmünd
Box, c. 1910-15**

H. 9 cm, 25 x 14.8 cm. Brass, root wood.

Key replaced.

Image online.

€ 700 - 800

384

**France
Two bronze candelabra, c. 1850**

Six lights. Stylized floral. H. 64 cm, Ø 28 cm
(with base). Bronze, dark patina. Unsigned.

Black slate base.

€ 3.000 - 4.000 (Standard Taxation)

385

**Joseph Maria Olbrich
Jar, 1902/03**

H. 21.5 cm. Made by Gerhardi & Cie., Lüden-
scheid. Pewter.

Cf. Cat. Zinn des Jugendstils, Vol. 2, Neuss
1986, no. 267; exh. cat. Jugendstil Europalia,
Brussels 1977, no. 313.

Image online.

€ 1.300 - 1.600

386

**Great Britain
Chamber candlestick, c. 1890**

H. 6.5 cm, 25.5 x 12 cm. Copper sheet, brass, copper wire.

Image online.

€ 400 - 600

387

**Marius Hammer, Bergen
'Plique-à-jour' bowl, c. 1910**

Silver, gilded. 46.22 grams in total. H. 8.2 cm, 16 x 4.4 cm. Center coated with red enamel on Guilloché background, plique-à-jour technique, motifs of blue, green and red leaves. Dragons' heads additionally purple and blue. Marked on the bottom: 930S Schmiedehammer MH (embossed).

€ 1.800 - 2.600



387

388

**Archibald Knox
Toddy glass, 1902-05**

H. 13.4 cm. Made by WH Haseler, Birmingham for Liberty & Co., London. Pewter, openwork decor, original 'Clutha' glass insert by James Couper & Sons, Glasgow. Marked: 3 ENGLISH PEWTER 0534 MADE IN ENGLAND (embossed).

Image online.

€ 200 - 300

389

**Charles (Karl) Korschann, Paris
Two vases with handles 'Nuit', c. 1900**

H. 32.5-32.8 cm. Made by Louchet, Paris. Bronze, gilded, decorated in relief. On the front with an allegory of the night in the form of a naked young woman in the midst of poppies, on the back poppy capsules and bats. Signed: CH. KORSCHANN PARIS, foundry mark LOUCHET CISELEUR PARIS (embossed). 1 sheet metal insert.

€ 2.500 - 3.000 (Regelbesteuerung)



389



390

390
Gustav Gurschner
Three-piece writing set, c. 1900

Inkwell with shelf, pen holder, blotter. H. 9 cm, 30 x 17 cm, H. 13 cm; H. 4.8 x 14.5 x 7.5 cm. Bronze. Inkwell signed: GURSCHNER (embossed).

Executed for La Maison Moderne, Paris.

Duncan, The Paris Salons, vol. V, Woodbridge 1999, p. 304.

€ 900 - 1.200

391
Hippolyte François Moreau
Two 'Lions' bookends, c. 1922

H. 13 cm, 19 x 8.4 cm (with base). Cast metal, silver plated. Natural plinth signed: Moreau (embossed). Black and white marble base.

Image online.

€ 450 - 650

392
Karl Bayer
Punch bowl, 1913

H. 49.5 cm. Made by Neue Münchner Kunstwerkstätten, Munich. Brass, punched. Marked: NMK, 191, 17 (embossed).

Image online.

€ 300 - 400

393
Orivit-Metallwarenfabrik, Cologne
Jardiniere with water lilies and snails, 1900

H. 14 cm, 52.5 x 30.3 cm. Orivit metal, partly half and three-dimensional decoration with plants and snails. Brass plated copper insert. Marked: „ORIVIT“ (embossed).

Cat. Orivit Métal Exposition Universelle Paris 1900, no. 2074; exh. cat. Orivit Zinn des Jugendstils, Cologne 1992, no. 2074 (each with tray).

Image online.

€ 600 - 800

394
Orivit-Metallwarenfabrik, Cologne
Vase 'Landscape', c. 1900

H. 36 cm. Orivit metal, gold plated, cased glass insert, colorless and amber brown. Etched and enameled decor with a tree-lined landscape. Marked: „ORIVIT“ 2570 (embossed).

Cf. cat. Orivit Métal Exposition Universelle Paris 1900, No. 2570.

€ 6.000 - 7.000

395
Orivit-Metallwarenfabrik, Cologne
Vase 'Girls' Heads', c. 1904

H. 29 cm. Orivit metal, gilded, cut glass insert. Marked: „ORIVIT“ 2586 (embossed).

Mounting hinged.

Image online.

€ 350 - 450



394



396

396
H. Patiné, Sèvres
Two vases, c. 1922

H. 15 cm. Sheet copper covered with precious metal foil, polychrome enamel. Floral decor with different meadow flowers. Signed: H. Patiné (black, handwritten). Silver-plated metal mount on the muzzle.

Bottom of one vase loose.

€ 1.800 - 2.600



399

399
Victor Saglier, Sèvres
Bottle 'Iris' with metal mounting, c. 1900

H. 26 cm. Colorless glass, etched. Decorated with irises, polychrome enameled and gilded. Neck and stopper with silver-plated metal mounting. Signed: VS with sailing ship (gold stamp).

€ 700 - 900

397
Puiforcat, Paris
Coffee and tea service, 1927

Five pieces. Coffee pot, teapot, creamer and sugar bowl. H. 7.7-16.5 cm, tray, 57 x 37 cm. Nickel silver, silver plated, ebony. Marked: PUIFORCAT FRANCE, workshop mark (embossed).

€ 4.000 - 5.000

398
Albert Reimann, Berlin
Decorative bowl, c. 1920

Ø 26.5 cm. Brass, chased and hammered. Marked: AREIMANN (embossed).

Image online.

€ 400 - 600



397



400

400
Walter Scherf & Co., Nuremberg
Tall vase, 1900/01

Two peacocks as handles. H. 53 cm. Pewter. Marked: „OSIRIS“ 684.
 Pese, Jugendstil aus Nürnberg, Stuttgart 2007, p. 158.
€ 2.000 - 2.500

401
Walter Scherf, Nuremberg
Flower bowl, c. 1903

H. 6.2 cm, 25 x 10.4 cm. Metal, gilded, etched and cut glass insert.
 Marked: „OSIRIS“ 852, 46 (embossed).
 Pese, Jugendstil aus Nürnberg, Stuttgart 2007, p. 191, Doc 140,
 catalog for Liberty & Co., London, 1903.
€ 400 - 600



401

402
Walter Scherf, Nuremberg
Cachepot, 1901/02

H. 17.5 cm, 35.5 x 27.5 cm. Execution of the bowl: presumably Zsolnay, Pécs. Pewter, earthenware, predominantly green, lustrous glaze. Marked: OSIRIS 991 (embossed).
 Exh. cat. Peter Behrens und Nürnberg, Nuremberg 1980, no. 259.
€ 900 - 1.000

403
Scribe
Bookends 'Bêliers', c. 1930

H. 15.5-17 cm, 16.5 x 8 cm. Bronze, dark green patina. Base signed: Scribe (incised, indistinct). Black and gold marble base.
€ 500 - 700

404
Sheffield
Coffee and tea service, c. 1900

Four pieces. Coffee pot, teapot, milk jug, sugar bowl. H. 18.5-27 cm. Silvered metal, ebonized wood. Marked: Crown, Sheffield Plate, standing lion (embossed).
 Image online.
€ 300 - 400

405
S. Smith & Sons Ltd.
Pilot Dashboard Clock, 1930s

H. 7.5 cm, 9.5 x 10 cm. Sheet metal, painted black, glass, wood. Marked: S. SMITH & SONS LONDON, SWISS MADE, crown, AM 29027.
 Mechanical movement not working.
€ 300 - 500 (Standard Taxation)



402



406

406

**Henry Bonnefond
'Narcisse' visiting card tray, c. 1898**

H. 24 x 15.5 cm. Bronze. Signed in the mirror and inscribed: H. BONNEFOND, foundry mark SUSSE Fres Edts Paris; on the side: foundry mark and the signet of the Syndicat des Bronzes Unis; on the bottom: VIDE POCHE NARCISSE (embossed).

€ 900 - 1.200

407

**WMF, Geislingen
Jardiniere, c. 1900**

H. 19 cm, 58 x 32 cm. Britannia metal, silver-plated, glass insert. Marked: as, WMFB, I/O, E (embossed).

WMF, Catalog 1906, reprint, Woodbridge 1988, p. 95.

Image online.

€ 500 - 600

408

**WMF, Geislingen
Three carafes, c. 1900**

H. 26.3-32.5 cm. Britannia metal, silver plated. Etched and ground glass body. Marked: WMFB, I/O as, asterisk (embossed).

Image online.

€ 400 - 500

409

**WMF, Geislingen
Centerpiece with girl figure, 1903**

H. 22 cm, 35 x 16.4 cm. Britannia metal, silver plated. Marked: as WMFB I/O (embossed).

WMF, Catalog 1906, reprint, Woodbridge 1988, p. xlii.

Image online.

€ 300 - 500



403

410

**WMF, Geislingen
Decorative 'Ikora' plate 'Diana', c. 1925**

Ø 22.2 cm. Brass, silver-plated, green and black patina, etched decoration with a hunting Diana in a landscape. Marked: Ikora mark (embossed).

Burschel/Scheiffele, WMF Ikora-Metall, Stuttgart 2006, p. 143.

Image online.

€ 80 - 100

411

**WMF, Geislingen
'Ikora'-Vase' 20/10 ', 1929**

H. 26 cm. Brass, nickel-plated, brown patina, milled.

Burschel/Scheiffele, WMF Ikora-Metall, Stuttgart 2006, p. 96.

Image online.

€ 150 - 250

412

**Paul Haustein (School)
'Ikora' urn, 1929**

H. 20 cm. Made by WMF, Geislingen. Brass, dark auburn patina and silver plating, stylized floral decor. Marked: Ikora mark (embossed).

Burschel / Scheiffele, WMF Ikora-Metall, Stuttgart 2006, p. 55, p. 135 (drawing), p. 142.

Image online.

€ 150 - 250

413

**WMF, Geislingen
'Ikora' vase, 1931**

H. 30.5 cm. Brass, green patina, etched decor, brown patina. Marked: Ikora mark (embossed).

Burschel/Scheiffele, WMF Ikora Metall, Stuttgart 2006, p. 99.

€ 550 - 600

414

**WMF, Geislingen
'Ikora' vase, 1933**

H. 30 cm. Brass, green patina, etched decor, brown patina. Marked: Ikora mark (embossed).

Burschel/Scheiffele, WMF Ikora Metall, Stuttgart 2006, p. 203.

Image online.

Image online.

€ 400 - 450



413



417



418



419

415
Bruckmann & Sons, Heilbronn
Sugar tongs, c. 1900

Silver. 20.11 grams in total. L. 9.7 cm. Marked: German hallmarks 800 Bruckmann eagle (embossed).
 Image online.
€ 120 - 150

416
Bruckmann & Sons, Heilbronn
Six mocha spoons 'Girl's Head', c. 1900

Silver. 47.00 grams in total. L. 9 cm. Marked: German hallmarks 800, Bruckmann eagle (embossed).
 Image online.
€ 350 - 450

417
Hans Christiansen
Seven '3001' serving pieces,
1901/02

Two pieces of salad servers, server, two serving spoons, sauce ladle, sugar spoon. Silver, gilded. 451.86 grams in total. L. 11.9-25.5 cm. Made by Bruckmann & Sons, Heilbronn. Marked: German hallmarks 800, workshop mark, distribution CF KEYSER (embossed).
 Sänger, Das deutsche Silber-Besteck, Stuttgart 1991, p. 132.
€ 1.200 - 1.600

418
Germany
Decanter, c. 1905

Silver, cut glass. 604 grams in total. H. 34.8 cm. Marked: German hallmarks 800.
€ 900 - 1.000

419
Germany
Cigarette case 'Fancy dress ball',
1920s

Silver, gilded inside, polychrome enamel. 129.33 grams in total. H. 1.8 cm, 8.8 x 8 cm. Marked: 935 German hallmarks (embossed).
€ 700 - 900

420
England
Group of seven wine bottle holders,
1920s

H. 21.6-29 cm. Silver plated metal. Marked: different manufacturer brands (embossed).
€ 700 - 900 (Standard Taxation)



420



421

421

France

'Campanules' mocha service, 1920s

Four pieces. Mocha pot, water jug, cream jug, sugar bowl. Silver, gilded inside. Walnut. A total of 750.25 grams. H. 6-12 m. Marked: Minerva head, workshop mark in a lozenge.

€ 900 - 1.200

422

Georg Jensen

Goblet '263B', 1918

Silver. A total of 563 grams. H. 19 cm, Ø 18 cm. Made by Georg Jensen, Copenhagen, 1918-32. Marked: DESSIN GJ, GEORG JENSEN in a wreath of pearls with a crown, GJ 925S, 263B (embossed).

Drucker, Georg Jensen, Atglen 2001, p. 191.

€ 2.200 - 3.200

423

Harald Nielsen

Hand-held mirror, c. 1935

Silver, cut mirror glass. A total of 342.70 grams. L. 26.6 cm. Executed by Georg Jensen, Copenhagen, 1933-44. Marked: HN, 172 B, DENMARK, GJ, STERLING 925 S (embossed).

Image online.

€ 400 - 600

424

Mellerio dits Meller, Paris

Compact, c. 1930

Silver, Gold. 197.00 grams in total. 7 x 8 cm. Marked: MELLERIO DITS MELLER, manufacturer's mark, head of Minerva, boar and eagle, model number (embossed).

Image online.

€ 400 - 500

425

Evald Nielsen, Copenhagen

Silverware '12', c. 1915

45 pieces. Potato spoons, salad cutlery (2 pieces), 2 pie servers, 2 slicing forks, bottle opener, sugar tongs, 6 each table and menu spoons, forks and knives. Silver, steel blades. 2939 grams in total. L. 9.5-24 cm. Marked: No 12, S, EN or Evald Nielsen, 830 (embossed). Knife additionally: STERLING DENMARK.

Five pieces with dates 1922-28. Engraved owner monograms.

€ 1.500 - 2.000

426

Evald Nielsen, Copenhagen

Fish silverware '16', c. 1915

Twelve pieces. 6 forks, 6 knives. Silver. 534 grams in total. L. 16.9-18.8 cm. Marked: 16, S, Evald Nielsen, 830 (embossed).

One fork additionally marked: ANNO 1925. Engraved owner's monogram.

Image online.

€ 400 - 600



422



425



427

427
Puiforcat, Paris
Communion chalice and paten
plate in original case, c. 1930

H. 15 cm, Ø 16 cm. 685.59 Gram altogether. Silver, partly gilded. Marked: workshop mark in a lozenge, head of Minerva. Chalice additionally: JEAN PUIFORCAT PARIS. Original case: H. 18 cm, 18.5 x 17.5 cm. Covered in black leather.
€ 900 - 1.200



428

428
Peter Behrens
Fish knife and fish fork 'Behrens' -
'4800', 1900/01

Silver. 108.26 grams in total. L. 18.1-20.7 cm. Made by MJ Rückert, Mainz. Marked: workshop mark, 800 German hallmarks (embossed). Sängner, Das deutsche Silber-Besteck, Stuttgart 1991, p. 113.
€ 1.200 - 1.600

429
Russia (attributed)
'Dog' letter opener, before 1917

Silver, bone. 66.94 grams in total. L. 25.8 cm. Marked: workshop mark (faint), 835 S (as a Danish import hallmark) (stamped). Bone engraved: Olga. Provenance: Grand Duchesse Olga Alexandrovna Romanova. Then Countess von Elzelingen, Copenhagen.
€ 700 - 800

430
Russia (attributed)
'Horse' letter opener, before 1917

Silver, bone. 28.94 grams in total. L. 20.5 cm. Marked: workshop mark (faint), 835 S (as a Danish import hallmark) (stamped). Bone engraved: Olga. Provenance: Grand Duchesse Olga Alexandrovna Romanova. Then Countess von Elzelingen, Copenhagen.
€ 700 - 800

431
Josef Maria Auchentaller
Pill box, c. 1901

Silver, gilded inside, jade. 42.06 grams. Made by GA Scheid, Vienna. Marked: Diana head, GAS, B5 (embossed). Engraved owner's initials BP. Festi, Wiener Bijoux, Grado 2015, p. 19 (from: Ver Sacrum IV, 8 (1901)).
€ 500 - 600

432
Willi Stoll
Three serving pieces and six tea-
spoons, 1950s

Cold cut fork, butter knife, pastry knife, 6 teaspoons. Silver, hammered. 280 grams in total. L. 14.2-15 cm. Marked: HANDARBEIT, 900 W.STOLL. Cold cut fork of 800 silver. Image online.
€ 300 - 500



429



430



431

433

Willi Stoll

30-piece dining cutlery, 1950s

For six persons. Soup spoons, dinner forks, knives, coffee spoons, mocha spoons. Silver, hammered, steel blades. 1140 grams in total. L. 8.7-19.4 cm. Marked: HANDARBEIT, 900 W.STOLL (embossed).

€ 1.200 - 1.500



433

434

Vienna

Tray, c. 1910

Silver. 1980 grams in total. 46.5 x 63.5 cm. Marked: Diana head, another mark (indistinct) (embossed).

€ 1.500 - 1.800



434



435

435

Wilkens & Sons, Bremen
Tray 'Water Lily', c. 1900

Silver. Approx. 700 grams in total. 30.8 x 29.4 cm. Marked: workshop mark 800 German hallmarks, 147219, distributor's mark E GOLDSCHMIDT (embossed).

Engraved owner's initials BHF.

€ 500 - 600

436

Heinrich Vogeler

Set of two serving knives 'Herbstzeitlose', 1902

Silver, steel blades. 119.11 grams. L. 18.7-18.9 cm. Made by Wilkens & Sons, Bremen. Blades marked: Friedur, JA HENCKELS.

Unidentified owner's monogram (engraved).

Cf. Sänger, Das deutsche Silber-Besteck, Stuttgart 1991, p. 237.

Image online.

€ 100 - 200



437

437
Edouard-Aimé Arnould

Collier 'Gingko', c. 1900
Silver. 18.41 grams in total. L. 29 cm. Marked: Boar's head, ARNOULD (embossed).
€ 450 - 550

438
Baine
Belt buckle 'Fairy', c. 1900

Silver. Total 64.33 grams. 5.8 x 10 cm. Marked: BAINE, boar's head (embossed).
€ 900 - 1.200



438



440

439
Victor Boivin, Paris
Belt buckle, c. 1900

Two-piece. Silver; gilded back. Decorated in relief with Pierrot and Columbine in moonlight. Total 59.67 grams. 6.5 x 10.1 cm. Marked: workshop signet, boar's head.
One jetty lost.
€ 700 - 900

440
Germany
Pendant, c. 1900

Silver, green enamel, two freshwater pearls. 6.29 grams in total. L. 30.5 cm. Chain marked: 900 (embossed).
€ 400 - 500



439

441

**Patriz Huber
Brooch, 1901/02**

Silver, hematites. Total 5.82 grams. 2.4 x 3.7 cm. Marked: workshop signet TF DEPOSE 900, artist's signet (raised).
€ 900 - 1.200



441

442

**Theodor Fahrner, Pforzheim
Two rings, c. 1930, 1932**

Silver, cord soldering, tourmaline-colored synthetic spinel or silver, marcasite, jade. 11.86 grams in total. Thru 56-57. Marked: 925 TF, 1x FAHRNER (faint).
Cf. cat. Fahrner-Schmuck, Galerie Wolfgang Ketterer, Munich 1990, nos. 162, 168.
€ 400 - 500



442

443

**Theodor Fahrner, Pforzheim
Two rings, 1950s and 1975**

Silver, tourmaline synthetic spinel or silver, coral. 12.50 grams in total. Thru 53-57. Marked: TF 925 or FAHRNER 925 (embossed).
Cf. cat. Fahrner-Schmuck, Galerie Wolfgang Ketterer, Munich 1990, nos. 184, 289.
€ 400 - 500



443

444

**Germany
Ring**

Yellow gold, pearls. 8.24 grams. Thru 58. Unsigned.
€ 500 - 600

445

**Patriz Huber
Hatpin, 1901/02**

Silver, Almandine Garnet. 6.92 grams in total. L. 23.3 cm. Made by Martin Mayer, Mainz. Marked: 835, 5 (embossed).
Exh. cat. Patriz Huber, Mathildenhöhe Darmstadt 1992, no. 132 (sketch).
€ 900 - 1.200

446

**Adolf von Mayrhofer, Munich
Brooch, c. 1910**

Silver, jade. 7.50 grams in total. 2.5 x 3.4 cm. Unsigned.
Cf. Hase, Schmuck in Deutschland und Österreich, Passau 1977, p. 234.
€ 250 - 350



444



445



446



447

448

447
Austria
Pendant with chain

Silver, onyx, aventurine, coral, small brilliant. 24.97 grams in total. L. 32 cm. Faint mark.
€ 350 - 450

448
Austria
Collier

Silver, jade, black opal. 31.85 grams in total. L. 33 cm. Marked: 800 (embossed).
€ 350 - 450

449
Austria
Amber Collier

Dark amber, silver clasp. Ø (inside) 16 cm. Marked: 900 EB, toucan head (embossed).
€ 200 - 300

450
USA
Compact, c. 1945

Silver, plexiglass. 73.82 grams in total. Ø 5.8 cm, H. 1.4 cm, 7.3 x 7.3 cm. Marked: STERLING DEP. PAT. 140637. Image online.
€ 100 - 150

451
Wiener Werkstätte (ATTR.)
Ring, 1914/15

Silver, red, black, gray and white enamel. Thru 52, a total of 2.04 grams. Unsigned. Enamel with tiny defects. Cf. 'War Glasses' by Josef Hoffmann and Dagobert Peche for Johann Oertel & Co., Haida. In: Franz (ed.), The Glass of the Architects, Milan 2017, p. 134 ff.
€ 450 - 550



451

452
Maria Likarz
Necklace of glass beads, c. 1920

L. 129 cm. Made by Wiener Werkstätte. Glass beads, orange, silver, violet and yellow, threaded and braided, wooden knobs embroidered with beads.
€ 500 - 600



449



452



454

453

**L. Bernardaud & Cie., Limoges
Vase, c. 1928**

H. 29.8 cm. Porcelain, white, glazed, overglaze in lobster red and black with platinum. Marked: Manufactory mark, PRIMAVERA FRANCE (green, over glaze).

Image online.

€ 250 - 350

454

**Albert Louis Dammouse
Lady with a jewelry box, c. 1900**

H. 20.3 cm. Porcelain, white, glazed, running glaze in brown, blue and green with gold. Marked: Manufactory mark (embossed), ALoys (incised).

Restored.

€ 1.500 - 2.000

455

**France
Vase with handles, c. 1900**

H. 15.2 cm. Stoneware, matt, predominantly beige, slightly crystalline glaze. Bronze mounting. Marked: 4598 (embossed).

Image online.

€ 500 - 700

456

**Emile Gallé
'Feuille de Nénuphar' plate,
c. 1878-83**

In the shape of a lily pad with a tiny beetle. H. 10 cm, 19 x 16.5 cm. Faïence, glazed in shades of brown, with gold. Signed: E, Cross of Lorraine G, déposé, Emile Gallé à Nancy (camaïeu red).

Glaze abraded in places.

€ 5.000 - 6.000



456



457

457

**Emile Gallé, Nancy
Tobacco jar, c. 1875**

H. 19 cm, 16.5 x 18.5 cm. Execution: Manufacture de St. Clément. Faience, 'Terre de Lorraine', polychrome enamel on white tin glaze. Bottom dark green, lined with gold. Bottom signed: SC, G. (gold, handwritten).
€ 900 - 1.200

458

**Édouard Marcel Sandoz
Jar 'Lapin', 1919**

H. 12.8 cm. Made by Theodore Haviland, Limoges. Porcelain, white, glazed, overglaze, black and brown. Lid and base of the vessel marked: Manufactory marks (glaze stamp), artist's signet (embossed).
Exh. cat. Edouard Marcel Sandoz, De la sculpture à la porcelaine, Paris 1999, no. 56/2.
€ 700 - 900

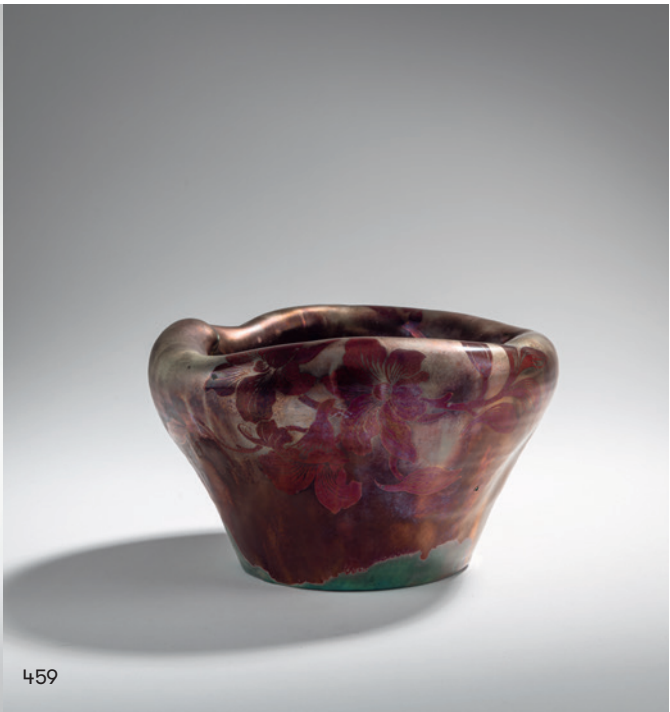
459

**Ernest Bussièrre
Bowl, c. 1900**

H. 11.8 cm. Made by Keller & Guerin, Lunéville. Earthenware, luster glaze in green and dark red. Floral decor. Marked: K&G LUNEVILLE B (lustered), LUNEVILLE (embossed).
€ 1.000 - 1.400



458



459



460

**Keller & Guérin, Lunéville
Planter, 1895**

H. 32.5 cm, Ø 30.5 cm. Earthenware, dark blue luster glaze with underwater scenery with fish; Red inside. Marked: K&G Lunéville 1895 (luster writing), K&G LUNEVILLE (embossed), original paper label.

€ 1.500 - 2.500

461

**Lucien Lévy-Dhurmer
Small vase, c. 1890**

H. 9.2 cm. Execution: Clément Massier, Golfe-Juan. Earthenware, luster glaze in dark red and green. feather decor. Marked: CLEMENT MASSIER GOLFE - JUAN (AM), L. LEVY (embossed).

€ 600 - 800

462

**Jean-Leon Mayodon, Sevres
Apothecary jar with lid, 1954**

H. 19.3 cm. Earthenware, decorated in relief with Aesculapius on one side and Greek warriors on the other. Glaze in green and black on white, as well as gold. Marked: MAYODON SEVRES (gold glaze stamp).

Landrot, Mayodon, Madrid 2004, p. 225.

€ 1.000 - 1.400

463

**Géo Condé
Tall 'Palmtrees' vase, c. 1930**

H. 38.5 cm. Made by Joseph & Pierre Mougins, Nancy. Stoneware, relief, polychrome matt glaze with palm tree decoration. Marked: MOUGIN NANCY 274 J, Condé dc, 1 (embossed), MADE IN FRANCE (black glaze stamp), C 59 (pencil).

Image online.

€ 350 - 450



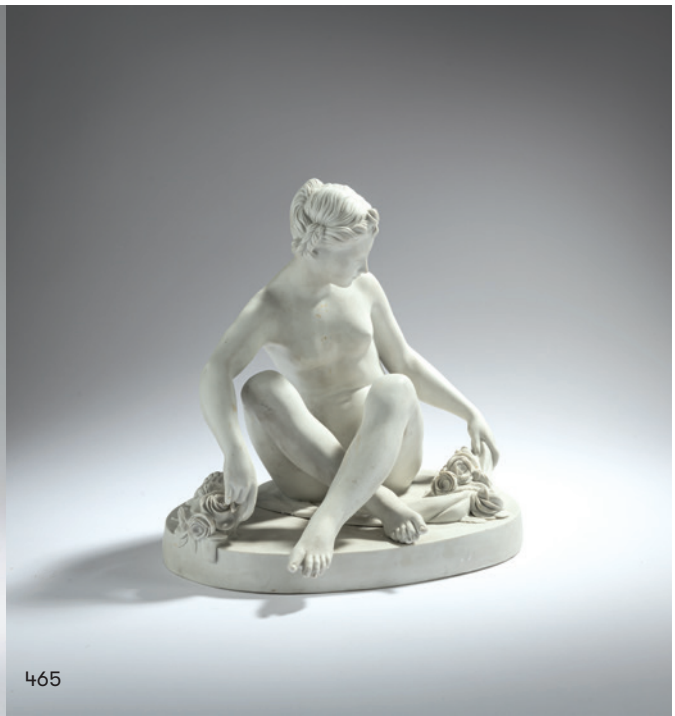


464

464
Édouard Marcel Sandoz (AFTER)
'Chat No. 2', 1923-26

H. 12.1 cm. Bisque porcelain. Signed: E. Sandoz (incised).
 Cf. Exh cat. Edouard Marcel Sandoz, *De la sculpture à la porcelaine*, Paris 1999, p. 38; no. 6.

€ 900 - 1.200



465

465
Etienne Maurice Falconet (AFTER)
Venus, a 1900

H. 27 cm. Made by Manufacture Nationale de Sèvres. Bisque porcelain. Base signed: Falconet, manufacturer's mark (embossed).

€ 1.000 - 1.500



467

466
Jean-Baptiste Séraphin
Lidded vessel, 1902

In the form of a poppy seed capsule. H. 25.5 cm. Executed by Manufacture Nationale de Sèvres. Stoneware, light brown and blue crystal glaze. Marked: Modele SEVRES (embossed), S 1902 (black glaze stamp).

Duncan, *The Paris Salons*, Vol. IV, p. 434.

€ 4.000 - 5.000

467
Hans Stoltenberg-Lerche
Decorative plate, 1910s

Ø 26.5 cm. Faïence, dark blue and brown enamel. Medallion in relief in the middle. Roman style profile of a man. Edge with stylized leaves in black. Marked: H. St. Lerche (incised).

€ 900 - 1.200



466

468

Hermann Hubatsch

'Agnes Sorma as Minna von Barnhelm', 1908

H. 27 cm. Executed by KPM Berlin, 1908. Porcelain, white, glazed, underglaze predominantly in light beige tones. Marked on the bottom: scepter (blue, under glaze, simply painted), date letter H, P (embossed), 8766 (incised).

Bröhan Museum Berlin, Berliner Porzellan vom Jugendstil zum Funktionalismus, Berlin 1997, p. 141; Bröhan Museum Berlin, Porzellan, Vol. 1, Berlin 1993, p. 174 (from the pattern book).

€ 2.200 - 2.600



468

469

Germany

Cachepot, c. 1900

H. 7 cm. Earthenware, dark green flow glaze over a dark blue background. Marked: 979/2 (embossed), 6 (blue, handwritten). Image online.

€ 150 - 200

470

Germany

Two 'Munich' beer steins, 1930s

H. 23 cm. Stoneware, salt glazed. Polychrome enamel decoration with a Munich child and a couple in the park. This monogrammed: TH CH. Hinged pewter lid with thumb rest.

Image online.

€ 400 - 600



472

471

Adelbert Niemeyer

4 mocha cups and 2 pots, c. 1912

H. 5.3-12.5 cm. Made by Johann Haviland, Waldershof. Porcelain, white, glazed, overglaze in pink and green with gold. Stylized rose decor. Marked: Manufactory mark (green, under glaze), Niemeyer (black glaze stamp), 801 (camaieu-red).

Image online.

€ 120 - 180

472

Ludwig König

'Tree Monkey', 1930-33

H. 42 cm, 51 x 23 cm. Made by Majolikamanufaktur Karlsruhe. Majolica, glazed in turquoise blue. Marked: manufacturer's mark. Chipped, losses in the glaze.

€ 2.500 - 3.500



473

473
Max Laeuger
Large vase 'Trees', 1921

H. 26 cm. Made by Karlsruhe majolica factory. Majolica, glazed white, green and brown, black slip decoration. Marked: Manufactory mark, 1828, PROF. LÄUGER, Made in Germany E h, 29 (embossed).

€ 800 - 900



474

474
Max Laeuger, Kander
Vase 'Tulips', c. 1897

H. 33 cm. Majolica, slip glaze in black and green on a beige-brown background. Marked: 1, MLK GESETZL. GESCHTZ, MUSTER GESETZL. GESCHTZT, H (incised or embossed).

Retouched.

Cf. Kessler-Slotta, Max Laeuger, Saarbrücken 1985, no. 18.

€ 800 - 1.200



475

475
Max Laeuger, Kandern
'Jug with Split Handle and Trees', 1900

H. 25.5 cm. Majolica, polychrome slip glaze over a light green background. Marked: MUSTER GESETZL. GESCHTZT, MLK GESETZL. GESCHTZT (embossed), 138 X 4 (incised). Restored.

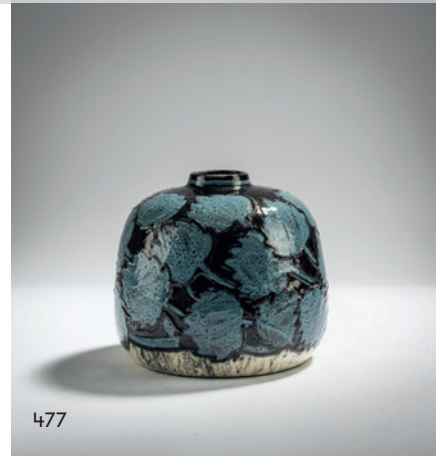
€ 800 - 1.200

476
Max Laeuger, Kandern
'Plate', c. 1902

Ø 34 cm. Majolica, colorless glaze, slip application in black and light green. Marked: 211 D (incised), MUSTER GESETZL. GESCHTZT, MLK (...) GESCHTZT (embossed). Chips in the glaze.

Image online.

€ 400 - 600



477

477
Max Laeuger, Kandern
Vase 'Foliage', pres. 1909

H. 13.8 cm. Majolica, blue and black slip over white background. Marked: MUSTER GESETZL. GESCHTZT, MLK GESETZL. GESCHTZT (embossed), 429 S (incised).

€ 500 - 700



478

478
Max Laeuger, Kandern
Vase 'Twigs', c. 1909

H. 22.2 cm. Majolica, green and blue slip over a light green background. Marked: 460, 4 (incised), MUSTER GESETZL. GESCHTZT, MLK GESETZL. GESCHTZT (embossed).

€ 500 - 700



479

479
Max Laeuger, Kandern
Small vase 'Leaves', 1916

H. 17.3 cm. Majolica, glazed in alkaline white and green, slip in dark green and brown-red. Marked: 710 A (incised), artist signet MLK, 1916 (embossed).

Small retouching to the lip.

€ 500 - 700

480

**Ludwig Schwanthaler
'Loreley', 1882-85**

H. 19 cm. Made by KPM Meissen. Porcelain, white, glazed, polychrome overglaze with gold. Marked: Swords (blue, under glaze), N 109 (incised), 24 (orange, handwritten).

Retouched.

Berling, Meissen China, reprint, New York 1972, pl. 29.

€ 700 - 900



481

**Gustave Deloy
'Country Love', 1895/96**

H. 20.3 cm. Executed by KPM Meissen, before 1924. Porcelain, white, glazed, polychrome overglaze. Marked: button swords (blue, under glaze), P 164 (incised), 49 (brown, handwritten).

Restored. Losses.

€ 900 - 1.200

482

**Hermann Mutz, Altona
Vase, 1902-13**

H. 22.1 cm. Earthenware, alkaline white running glaze over dark blue. Marked: 19, MUTZ ALTONA, 186 (embossed).

Image online.

€ 350 - 450

483

**Ferdinand Liebermann
'Dancer', 1910**

H. 19.5 cm. Made by Rosenthal, Selb, 1929. Porcelain, white, glazed, polychrome underglaze. Base marked: F. LIEBERMANN (embossed). Base: manufacturer's mark (green, under glaze), GOBLER (brown, handwritten).

Struss, Rosenthal, Augsburg 1995, p. 45.

Image online.

€ 300 - 400

484

**Ferdinand Liebermann
'Dancer', 1910**

H. 39 cm. Made by Rosenthal, Selb, 1917. Porcelain, white, glazed, polychrome underglaze. Base marked: FERD. LIEBERMANN (embossed). Bottom: manufacturer's mark, world war one mark 1914-1917 This model only exists in 200 copies number 48 (green, under glaze).

Limited edition.

Struss, Rosenthal, Augsburg 1995, p. 45.

€ 3.000 - 4.000

485

**Kurt Wendler
Covered vase, 1918**

H. 32 cm. Made by Rosenthal, Selb, 1920s. Porcelain, white, glazed, polychrome overglaze with gold, 'Indra' decor with cranes in stylized vegetation. Marked: Manufactory mark Kurt Wendler (green, under glaze).

Knob restored.

Cf. Siemens (ed.), Kurt Wendler, Hohenberg/Eger 1998, p. 35.

€ 1.800 - 2.200



485

486

**Kurt Wendler
Medallion, c. 1921**

6.3 x 4.1 cm. Made by Rosenthal, Selb. Porcelain, white, glazed, polychrome overglaze. 'Indra' decor. Unsigned.

Image online.

€ 150 - 250

487

**Kurt Wendler
Writing set 'Men's writing tools' and vase, 1926**

Four pieces. Inkwell with pen tray, blotter, paper knife and vase. H. 9 cm, 26.5 x 13.2 cm; H. 6.5cm, 11.4 x 4.7cm; L. 20.1 cm, H. 8.2 cm. Made by Rosenthal, Selb, 1927, 1928, 1930. Porcelain, white, glazed, polychrome overglaze. Marked: Manufactory marks (green, under glaze), K. 820 (embossed).

Partly restored.

Siemen (ed.), Kurt Wendler, Hohenberg/Eger 1998, p. 64.

€ 900 - 1.000



487

488

**Clary von Ruckteschell-Trueb
Night light, c. 1930**

H. 31.5 cm. Faience, polychrome glaze. Unsigned.

Image online.

€ 300 - 400



489

489

**Alphonse Mucha (STYLE)
Two decorative tiles 'Têtes', c. 1900**

17.6 x 11.5 cm. Executed by J. von Schwarz, Nuremberg. White porcelain, glazed. Thread relief, polychrome overglaze with women's profiles. Marked: 5024, 5025 (embossed).

€ 2.000 - 2.500



490

490

**Carl Sigmund Luber
Framed tile 'Sancta Maria Virgo', c. 1900**

19.5 x 14.3 cm (with frame). Executed by J. von Schwarz, Nuremberg. Earthenware, thread relief, polychrome glaze.

König/Weichselbaum, Carl Sigmund Luber, Einbeck 2006, p. 81, cat. rais. 754.

€ 600 - 800



491

491
Therese Trethan
Breakfast service 'Curly Shape' -
Agnes', 1903

18 pieces. Teapot, 2 teacups with saucers, 2 coffee cups with saucers; 4 pastry plates, 4 breakfast plates, 4 egg cups, centerpiece. H. 4.5-9.7 cm, H. - Ø 16.2-20.5 cm; H. 13.4 cm, Ø 26 cm. Made by Ferdinand Selle, Burgau. Porcelain, white, glazed, with green underglaze. Marked: Manufactory mark (green, under glaze), model and painter numbers.

Egg cup with various chips and cracks.

Neuwirth, *Österreichische Keramik des Jugendstils*, Munich 1974, ill. p. 437 (decor design); Bröhan Museum Berlin, *Cat. Porcelain*, vol. 1, Berlin 1993, pp. 307-310, no. 291, 259, 297.

€ 1.400 - 2.000



492

492
Therese Trethan
Presentoire 'Curved Form' -
Agnes', 1903

H. 11 cm, Ø 32.5 cm. Made by Ferdinand Selle, Burgau. Porcelain, white, glazed, with green underglaze. Marked: Manufactory mark (green, under glaze), model and painter numbers.

€ 600 - 800

493
Therese Trethan
Preserve Pot 'Curly Shape' -
Agnes', 1903

H. 13 cm, Ø 22 cm. Made by Ferdinand Selle, Burgau. Porcelain, white, glazed, with green underglaze. Marked: Manufactory mark (green, under glaze), model and painter numbers.

Image online.

€ 400 - 500

494
Christian Neureuther
Vase, 1907

H. 21.5 cm. Made by Wächtersbacher Steingutfabrik, Schlierbach. Earthenware, glazed in gray tones. Marked: Signet of the art department Christian Neureuther 1069 (green glaze stamp), shield, AQKH 2424 (embossed).

€ 700 - 900

495
Christian Neureuther
Vase, c. 1907

H. 25.5 cm. Made by Wächtersbacher Steingutfabrik, Schlierbach. Earthenware, glazed in shades of gray and beige. Marked: Signet of the art department Christian Neureuther 727 (green glaze stamp), 2935, F, KR (embossed).

€ 600 - 700

496
Josef Hoffmann
Coffee cup 'Mercury', 1910/11

H. 5.6 cm. Executed by Josef Böck and Pfeifer and Löwenstein, Schlackenwerth, commissioned by the Wiener Werkstätte, c. 1920. Porcelain, white, glazed, stripe decoration, black, on glaze, with gold. Marked: Manufactory marks (green, under glaze), 1330 (black, on glaze).

Hairline crack in the saucer.

€ 1.200 - 1.600



494



495



500

498

**Stephan Dakon
'Striding Spaniard with a large fan', 1935/36**

H. 44.5 cm. Execution: Friedrich Goldscheider, Vienna. Earthenware, polychrome glaze. Marked: Manufactory mark Goldscheider Wien MADE IN GERMANY, Dakon (black glaze stamp), 7415 89 6 L (embossed), F. (black, handwritten). Mantilla re-attached. Dechant/Goldscheider, Goldscheider, Stuttgart 2007, no. 7415.
€ 700 - 900

500

**Hilda Jesser
Lidded bowl, 1921**

H. 29 cm, 16.5 x 16.5 cm. Made by Wiener Werkstätte. Majolica, polychrome glaze on white. Marked: WW, MADE IN AUSTRIA, 824 (embossed). Restored, chipped. Exh. cat. Expressive Keramik der Wiener Werkstätte, Bayerische Vereinsbank Munich, Munich 1992, p. 57, nos. 23 a, b.
€ 900 - 1.200

497

**Ignàc Fischer, Budapest
Narrow-necked vase, 1880s**

H. 28.5 cm. Earthenware, polychrome enamel on a white background. Floral decor with gilding. Marked: Manufactory mark (green, on glaze), handwritten inscription. Image online.
€ 200 - 300

499

**Eduard Klablana
Kestrel, 1918/19**

H. 24 cm. Made by Langenzersdorf ceramics. Earthenware, polychrome glaze. Marked: EK (black, handwritten), 209 (stamp). Glued. Fellner/Temel, Eduard Klablana, Wien 2000, pattern book No. 1122.
€ 900 - 1.200

501

**Czechoslovakia
Wall mask, late 1940s**

H. 25 cm. Majolica, polychrome glaze. Marked: 3 or 807 (embossed). Image online.
€ 400 - 500



496

502

**J. Schnabel & Sohn, Desná
Mocha Service, c. 1920**

Nine pieces. Mocha pot, creamer, sugar bowl, six cups with saucers. H. 4.8-14.8 cm. Porcelain, white, glazed, polychrome overglaze. Marked: Manufactory mark (green, under glaze), painter shop mark (red, over glaze). Image online.
€ 600 - 800



498



499



503

503

Amadeo Gennarelli
Reclining female nude, c. 1930

H. 15.5 cm, 72.5 x 10.2 cm. Terracotta.
Signed: A. Gennarelli (incised).

€ 600 - 800

504

Galileo Chini
Vase with handles 'Uccelli', 1897-1907

H. 22 cm. Earthenware, polychrome glaze on white. Decorated with flying birds. Marked: Manufacturer's mark FIRENZE 36 (blue, handwritten).

Cf. Gaudenzi, Novecento ceramiche italiane, Vol. 1, Faenza 2005, p. 58.

€ 2.000 - 3.000



504

505

Roberto Rosati
'I Gatti' planter, c. 1928

H. 12.5 cm, Ø 20.5 cm. Execution by Fiamma, Rome. Earthenware, polychrome glaze. Decorated with a round dance of black cats. Marked: FIAMMA (black, handwritten).

Shallow glaze chips.

€ 500 - 700

506

Galileo Chini
Small planter 'con Antilopi', 1906-19

H. 12.5 cm, Ø 17 cm. Execution by Fornaci San Lorenzo, Mugello. Stoneware, brown salt glaze with black decor, antelopes and stylized plants. Marked: Manufactory signet MUGELLO, 2074, 8 (blue, handwritten).

Chips.

€ 1.200 - 1.800

507

Italy
Vase 'Seascape with Stork', c. 1900

H. 30 cm. Earthenware, polychrome glaze. Unsigned.

Glaze chipped.

Image online.

€ 400 - 600



505



506

508

Giovanni Gariboldi
Vase, c. 1930

H. 34 cm. Execution by Richard Ginori, Milan. Earthenware, glazed celadon green. Marked: RICHARD GINORI with crown (glaze stamp).

Shallow chips.

Image online.

€ 400 - 600

509

Richard Ginori, Milan; Porcelain factory Waldershof AG, formerly John Haviland
Tea set, c. 1930

15 pieces. Tea pot, creamer, sugar bowl, six cups with saucers and six cake plates. H. 8-13 cm, Ø 19 cm. Porcelain, white, glazed, edges with gold decoration. Marked: RICHARD GINORI with three stars.

In addition: 5 more saucers. Richard Ginori held the majority of shares in Haviland from 1924-37. Cf. Zühlsdorff, Markenlexikon, Stuttgart 1988, p. 638, mark 1.2.772.

€ 1.000 - 1.400



509



510

510

Elias Pedersen

Vase with roosters for the World Fair in Paris 1900

H. 33.5 cm. Made by Bing & Grøndahl, Copenhagen. Porcelain, white, glazed, underglaze in brown, blue and green. Marked: three tower mark B&G KJØBENHAVN DANISH CHINA WORKS (green, under glaze), B&G, EEXI, EL, signature Elias Petersen (blue, handwritten).

Restored.

Duncan, *The Paris Salons* vol. IV, Woodbridge 1998, p. 61.

€ 2.500 - 3.500

511

Nils Erik Lundström

Cachepot 'Poppies', c. 1902

H. 18 cm. Made by Rörstrands Porslinsfabriker, Lidköping. Porcelain, white, glazed, polychrome underglaze, decorated in relief with poppies. Marked on the bottom: manufacturer's mark NL (green, under glaze).

Cf. Nyström, *Rörstrand*, Stuttgart 2011, p. 192.

€ 1.200 - 1.600

512

Charles Catteau (ATTR.)

2 vases, c. 1927

H. 18 cm. Made by Boch Frères, La Louvière. Earthenware, incised decoration, enameled in yellow and blue, gray crazing. Stylized floral decor. Marked: Manufactory mark (blue glaze stamp), 900 (embossed), D 1121, N (black, handwritten).

€ 500 - 700

513

Samuel Schellink

Covered vase, c. 1914

H. 21 cm. Made by Haagsche Plaatelbakkerij Rozenburg, The Hague. Earthenware, polychrome glaze, decor with stylized flowers.

Marked: Stork with crown, Rozenburg den Haag (gray glaze stamp), W 335 B (incised), window, 451, artist's signet SS (black, handwritten).

€ 500 - 600



511

514

**Walter Moorcroft, Stoke-on-Trent
Vase, c. 1953**

H. 21.3 cm. Execution: 1953-78. Earthenware, green glaze with thin yellow and red slip. Marked: MOORCROFT, MADE IN ENGLAND (embossed), P (black, handwritten), two labels, POTTERS TO THE LATE QUEEN MARY, MOORCROFT ENGLAND.

€ 250 - 350

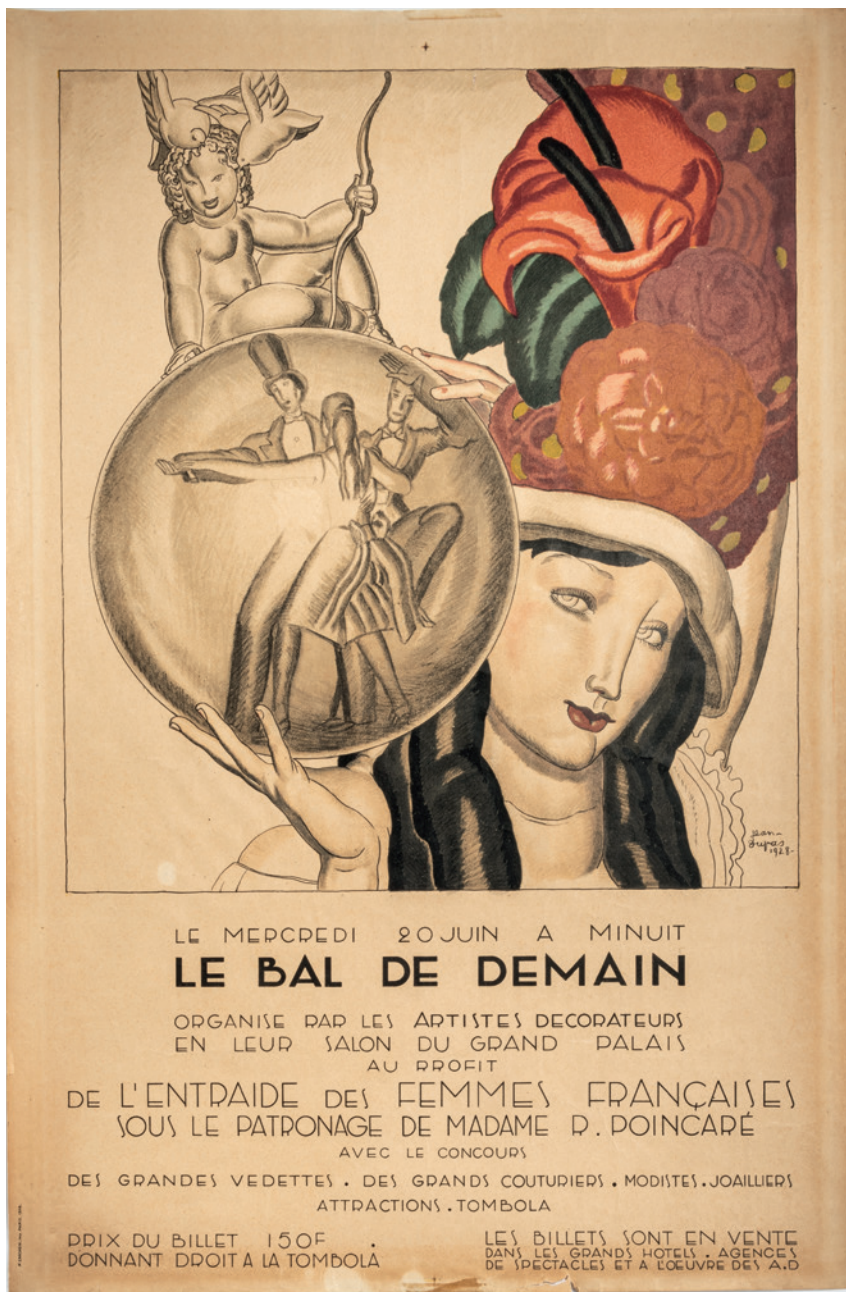
515

**Walter Moorcroft, Burslem
Small vase 'Pomegranate and Berries, 1940s**

H. 10 cm. Earthenware, polychrome glaze on a dark background. Marked: WM (green, handwritten), MOORCROFT BURSLEM M 45 (embossed).

€ 300 - 400





518

516

**Peter Behrens
Kunstgewerbeblatt, 7 issues, 1912**

EA Seemann, Kunstgewerbeblatt. Neue Folge. Year XXIII, Leipzig 1912. Issues 7-12, Year XXIV, Issue 1. Cover designed by Peter Behrens.

Image online.

€ 50 - 60

517

**Carl Otto Czeschka
Portfolio 'Allerlei Gedanken in
Vignettenform', 1900**

Portfolio, with cardboard cover, from the series 'Die Quelle', Vo. I, 1900, ed. Martin Gerlach, published by M. Gerlach & Co., Vienna and Leipzig. Envelope draft, 30 partially multicolored plates based on drawings by CO Czeschka. Vignettes each with the artist's signet or signature, sheets each with title, artist and manufacturer information.

Portfolio fragile/loose.

Pabst, Wiener Graphik um 1900, Munich 1985, p. 101 f., fig. 98-100.

Image online.

€ 500 - 700

518

**Jean Dupas
Poster 'Bal de Demain', 1928**

Color lithograph on paper. 60 x 40 cm (sheet), 75 x 54 cm (with frame). Signed and dated in the plate: Jean Dupas 1928. Framed under museum glass.

Few tears to the edges, small hole above the depiction, creases.

€ 6.000 - 8.000 (Standard Taxation)

519

**Fritz Erler (ATTR.)
Flower putto**

Oil on canvas laid down on cardboard. 55 x 40 cm (canvas/cardboard). Unsigned.
Inlaid wooden frame.

€ 750 - 950



519

520

**Josef Hoffmann
Decorative drawing, c. 1950**

Brown ink on paper. 28 x 20.5 cm (passepartout cutout). Monogrammed: JH. Framed in
glazed passe-partout.

Later inscription „1973“ in ballpoint pen by Hoffmann's widow Carla Schmatz. As a
Christmas present to the painter Willi Erb. From his estate. Not de-framed.

€ 600 - 800



520

521

**Louis Icart
Design for the 'Roger & Gallet' poster, c. 1930**

33.8 x 24.6 cm. Pencil and colored crayons with gold on cardboard. Signed top right:
Louis Icart. Glued paper frame. Mounted in passe-partout.

€ 600 - 800



521

522

**August Rieper
'Head of Medusa', after 1892**

Oil on canvas, mounted on a stretcher. 49.5 x 40 cm (stretcher). Signed lower right: A.
RIEPEP. Verso paper label: August Rieper, Munich, Liebigstr. 37 IV, Medusa (ink). Gold
frame.

Frame with losses.

After the painting by Franz von Stuck, 1892. Stuck, in turn, was inspired by a painting
by Arnold Böcklin in 1878.

€ 1.200 - 1.500



522



523

523
Friedrich Goldscheider, Vienna
Goldscheider catalog, c. 1900

Collection of partly glued-in collotypes with the figurines of the company Friedrich Goldscheider Vienna. Hard cover of linen and leather with gilt edges.

Binding renewed. Cut-outs, loose pages.

€ 1.500 - 2.500



524
George Hirth
'Youth', 1896

Jugend. Münchner Illustrierte Wochenschrift für Kunst und Leben. Edited by Georg Hirth, edited by Fritz von Ostini. G. Hirth's Kunstverlag, Munich and Leipzig. 1896, vols. 1 and 2, O linen binding with gilt edges. Numerous color and black and white illustrations. Volume 2 with a few missing pages.

Image online.

€ 300 - 400

525
Dr. Paul Hirth; Eduard Daelen
Book: 'Die Schönheit der Frauen'

Hirth/Daelen (Hrsg.), Die Schönheit der Frauen, Neue Folge. 280 photographische Freilichtstudien, Stuttgart 1910. 311 pages with numerous black and white photographs. Embossed cover.

Image online.

€ 200 - 300



524



525

526

Important books

8 books about Art Nouveau glass and Wiener Werkstätte

Exh. cat. Nancy 1900, Munich Municipal Museum, Mainz 1980; Hilschenz-Mlynek/Ricke, Glass collection Hentrich, Kunstmuseum Düsseldorf, Munich 1985; Ricke/Schmitt, Glass collection Gerda Koepff, Kunstmuseum Düsseldorf, Munich 1998, Ricke/Višek/Adlerová/Ploil, Lötzböhmisches Glas, Vol. I, Munich 1989; Warthorst, Theresienthal, Freiburg 1996; Neuwirth, Loetz Austria 1905-1918, Vienna 1986; Neuwirth, Loetz Austria 1900, Vienna 1986; Neuwirth, Wiener Werkstätte, Avant Garde, Vienna 1984.

€ 150 - 250



527

France

Evening bag, 1900-20

12 x 4.3 cm. Silver-plated metal, metal rings, differently colored. Label: MODELE FM DEPOSE (embossed).

Image online.

€ 40 - 60

528

Germany

Chain Bag, 1900-20

16 x 27 cm. Silver, silver rings, blue gemstones. Marked: 800 CH (embossed).

Cf. Exh. cat. Taschen. Eine europäische Kulturgeschichte 1500-1930, Bayerisches Nationalmuseum 2013, Munich 2013, p. 303.

Image online.

€ 70 - 90

529

Peter Behrens

Table cloth, before 1905

Approx. 202 x 210 cm. Made by S. Frankel, Neustadt. Linen damask geometric pattern. Marked: artist's initials PB.

Embroidered monogram MJ.

Buhrs (ed.), Maß & Freiheit, Munich 2010, p. 36.

€ 250 - 350

530

Peter Behrens

Table cloth, before 1905

Approx. 160x170cm. Made by S. Frankel, Neustadt. Linen damask geometric pattern. Marked: artist's initials PB.

Slightly stained.

Buhrs (ed.), Maß & Freiheit, Munich 2010, p. 36.

€ 200 - 300





IMPRESS

MANAGING DIRECTOR AND AUCTIONEER:

Askan Quittenbaum
+49 89 273702-113
a.quittenbaum@quittenbaum.de

DEPUTY MANAGING DIRECTOR:

Dr. Claudia Quittenbaum
+49 89 273702-111
c.quittenbaum@quittenbaum.de

SPECIALISTS:

Askan Quittenbaum
+49 89 273702-113
a.quittenbaum@quittenbaum.de

Faridah Younès M.A.
+49 89 273702-115
f.younes@quittenbaum.de

Nadine Becker M.A.
+49 89 273702-10
n.becker@quittenbaum.de

BOOK KEEPING AND CATALOGUE ORDER:

Annette Ehrenhardt
+49 89 273702-120
buchhaltung@quittenbaum.de

LOGISTIC AND SHIPPING:

Dirk Driemeyer
+49 89 273702-112
d.driemeyer@quittenbaum.de

M2 Logistik
+49 8121 223015
service@m2logistik.de

Mail Boxes Etc.
MBE Lippl Business Service
+49 8131 37 99 132
antique-muc@mbe-dachau.de

PHOTOGRAPHS:

Jochen Splett

DESIGN:

Daniela Paringer,
design & print GbR

PRODUCTION AND PRINT:

Peschke Solutions GmbH,
München





QUITTENBAUM
Kunstauktionen München

QUITTENBAUM Kunstauktionen GmbH

Theresienstrasse 60 · D-80333 Munich

Phone 089-27 37 02 10 · Fax 089-27 37 02 122

info@quittenbaum.de · www.quittenbaum.de

