

ART NOUVEAU ART DECO PART I

Auction 168 A • 23 May 2023





G. ARGY

ART NOUVEAU ART DECO GLASS

AUCTION 168 A

TUESDAY, 23 MAY 2023

3 P.M.

**PREVIEW:
THERESIENSTR. 60**

Wednesday	17.05.	10 a.m. - 6 p.m.
Friday	19.05.	10 a.m. - 6 p.m.
Saturday	20.05.	1 p.m. - 5 p.m.
Sunday	21.05.	1 p.m. - 5 p.m.
Monday	22.05.	10 a.m. - 6 p.m.

**QUITTENBAUM
Kunstauktionen GmbH**

Managing Director: Askan Quittenbaum
Theresienstrasse 60 · D-80333 Munich
Phone (+49) 89-27 37 02 10
Fax (+49) 89-27 37 02 122
E-Mail info@quittenbaum.de
Opening hours: Tues.-Fri. 3-6 p.m.
by appointment



Mitglied der Initiative
Datenbank
kritischer Werke



Bundesverband Deutscher Kunstversteigerer e.V.





1

**Gabriel Argy-Rousseau
'Lyciet de Barbarie' vase, 1917**

H. 14.8 cm. Pâte de verre, translucent glass gather, molded, predominantly colorless, green, brown and orange. Wall signed: G. ARGY-ROUSSEAU; Back: 18190 (embossed). Bloch-Dermant, G. Argy-Rousseau, Paris 1990, no. 17.01.

€ 4.000 - 5.000



1

2

**Gabriel Argy-Rousseau
'Lotus bleu' ashtray, 1924**

H. 4 cm, Ø 9.2 cm. Pâte de verre, molded, predominantly colorless and honey brown. Wall signed: G. ARGY-ROUSSEAU (recessed). Bloch-Dermant, G. Argy-Rousseau, Paris 1990, no. 24.14.

€ 1.000 - 1.500



2

3

**Gabriel Argy-Rousseau
Vase 'Aux feuilles pointues', 1927**

H. 14.5 cm. Pâte de verre, translucent glass gather, molded, with lightly relieved decoration, mainly yellow and brown. Signed: G. ARGY-ROUSSEAU, on the bottom: FRANCE (recessed).

Bloch-Dermant, G. Argy-Rousseau, Paris 1990, no. 27.11.

€ 3.500 - 4.000



3



4

**Gabriel Argy-Rousseau
'Hieroglyphes' vase, 1927**

H. 14.1 cm. Pâte de verre, translucent glass gather, molded, with lightly relieved decoration, mainly yellow, brown and violet. Signed: G.Argy-Rousseau (recessed).

Bloch-Dermant, G. Argy-Rousseau, Paris 1990, no. 27.07.

€ 3.000 - 3.600



5

**Gabriel Argy-Rousseau
Bowl 'Lierre', 1919**

H. 8.6 cm. Pâte de verre, translucent glass gather, molded, predominantly colorless, violet and dark green. Wall signed: G. ARGY-ROUSSEAU (embossed).

Bloch-Dermant, G. Argy-Rousseau, Paris 1990, no. 19.01.

€ 1.600 - 2.600

6

Gabriel Argy-Rousseau
Two Veilleuses 'Rosettes', 1923

H. 17.3 cm. Pâte de verre, translucent glass, molded, with lightly relieved decoration, predominantly dark blue, violet and green. Signed: G ARGY-ROUSSEAU (embossed). Wrought iron bases. Each slightly chipped at the upper opening.

Bloch-Dermant, G. Argy-Rousseau, Paris 1990, no. 23.15.

€ 8.000 - 12.000 (Standard Taxation)



7

Gabriel Argy-Rousseau

Table light 'Fruits Tropicaux', 1925

H. 39.5 cm. Pâte de verre, translucent glass, molded, with lightly relieved decoration, predominantly violet, red and orange. Shade and base signed: G. ARGY-ROUSSEAU (embossed). Wrought iron mounting.

Bloch-Dermant, G. Argy-Rousseau, Paris 1990, no. 25.21.

€ 39.000 - 45.000 (Standard Taxation)



8

Gabriel Argy-Rousseau
Table light 'Floréal', 1925

H. 31 cm, Ø 18.5 cm. Pâte de verre, translucent glass, molded, with lightly relieved decor, predominantly violet and red. Shade and base signed: G. ARGY-ROUSSEAU (embossed). Silver-plated metal base.

Must be re-electrified.

Bloch-Dermant, G. Argy-Rousseau, Paris 1990, no. 25.31.

€ 22.000 - 26.000 (Standard Taxation)





9

Gabriel Argy-Rousseau
'Le Jardin des Hespérides' vase, 1926

H. 23.6 cm. Pâte de verre, translucent glass gather, molded, with a light relief decor with three nymphs picking apples, mainly amber, brown, orange and dark blue, meander frieze in the lower area.

Signed: G.ARGY-ROUSSEAU (embossed), marked on the bottom: FRANCE.

Bloch-Dermant, G. Argy-Rousseau, London 1991, color boards, p. 72 f.; cat. rais. 20.01.

€ 9.000 - 12.000



11

10

**Cristallerie de Baccarat, Paris
Vase, c. 1900**

H. 30.3 cm. Cased glass, colorless and light green. Etched and gilded decor. Motif on both sides with fire-breathing dragons, friezes with ivy tendrils. Star cut on the bottom. Image online.

€ 800 - 1.200

11

**Verrerie d'Art de Lorraine, Burgun,
Schverer & Co., Meisenthal
Vase 'Crocus', 1896-1900**

H. 8 cm. Cased glass, colorless, vanilla yellow and soft pink. Etched intercalaire decor reworked with the wheel, with pink and green crocus flowers. Signed on the bottom: VERRERIE D'ART DE LORRAINE BS & Co, déposé, cross of Lorraine and thistle (gold stamp).

Olland, Verrerie d'Art de Lorraine, Désiré Christian, Dijon 2010, No. 69.

€ 1.200 - 1.800

12

**Verrerie d'Art de Lorraine, Burgun,
Schverer & Co., Meisenthal
'Bleuets' Vase, 1897-1903**

Baluster shape with a long neck. H. 24.9 cm. Cased glass, colorless and ivory white. Etched decor with cornflowers, reworked with the wheel. Signed: VERRERIE D'ART DE LORRAINE BS & Co, déposé, cross of Lorraine and thistle (enameled).

Cf. Cat. Meisenthal, Berceau du Verre Art Nouveau, Meisenthal 1999, no. 62.

€ 3.000 - 4.000



12

13

**Verrerie d'Art de Lorraine, Burgun,
Schverer & Co., Meisenthal**
Vase 'Campanules', 1897-1903

H. 18.5 cm. Cased glass, colorless and violet.
Etched decor, reworked with the wheel. Blue-
bells, heightened with gold. Signed on the
bottom: VERRERIE D'ART DE LORRAINE BS
& Co, déposé, cross of Lorraine and thistle
(gold stamp).

Olland, Verrerie d'Art de Lorraine, Désiré
Christian, Dijon 2010, No. 73.

€ 1.800 - 2.600

14

**Verrerie d'Art de Lorraine, Burgun,
Schverer & Co., Meisenthal**
Vase 'au jeux antiques', um 1900

H. 14.8 cm. Cased glass, colorless and am-
ber yellow, inclusions of air bubbles. Etched
decoration with ancient warriors on horses.
Polychrome enamel and gilding. Bottom
marked: VERRERIE D'ART DE LORRAINE BS
& Co, déposé, cross of Lorraine and thistle
(gold).

Cat. Meisenthal, Berceau du Verre Art Nou-
veau, Meisenthal 1999, no. 54.

€ 3.500 - 4.500



13



14

Amédée de Caranza - Rarities from a Private Collection

The dates of the glass artist's life are in the dark. All that is known is that the son of French parents was employed as artistic director at the Faïencerie de Longwy in the early 1870s, where he worked on the enamel cloisonné technique. In 1875, he moved to Bordeaux to join Jules Vieillard & Cie. for which he won a gold medal at the 1878 World's Fair in Paris. With Clément Massier on the Côte d'Azur, he finally learned how to work with metallic oxide glazes.

However, Amédée de Caranza became famous for his glass in amber, red and brown tones, on the walls of which he created wonderfully impressive floral and aquatic motifs with a delicate luster using these same metal reduction colors. De Caranza was one of the pioneers of this technique on glass and applied for several patents.

In 1890 at the latest, he made his first attempts to apply metallic iridescent decorations to glass in a studio with a kiln provided by Henri Copillet in Noyon. The earliest known glass with luster painting is dated 1895 according to Hilschenz-Mlynek/Ricke. The famous art critic and advocate of Impressionism Julius Meier-Graefe took over the distribution of de Caranza's works from Paris in his store 'La Maison Moderne'. Around 1902-03, de Caranza worked and signed with his partner Jeanne Duc. Around 1903, he returned from Paris to Noyon and became one of the main collaborators of Henri Copillet's company for ceramics and finishing of art glass and windows, which lasted only until the end of the First World War.

Amédée de Caranza explained his technique for the patent application in March 1902 as follows, using a light bulb as an example:

"(...) We perform on its surface a decoration with any number of different metal oxides. These oxides can be applied either with water, gasoline, rubber, or generally with any suitable liquid or semi-liquid substance. (...) The objects are placed in a kiln, where they are fired as in the ordinary firing of glass, crystal, or opal, but during the firing the oxides are deprived of oxygen, so that they are restored to the state of native metals.

To accomplish this reduction, a suitable reducing agent such as coal, oil, carbide, hydrogen, pure gas or gas mixed with air is added before, during or after firing in sufficient quantity for the reduction to be complete..." (Transl. from French, Author's note).

The 14 glasses offered in the catalog from a carefully curated private collection are extremely rare on the art market and masterfully demonstrate the artist's development. For example, his vase 'Marrons', 1895-1900 (cat.-no. 15) could be mistaken at first glance for a ceramic work due to the semi-sculptural chestnut leaves on an earthen ground, while Amédée de Caranza's vase 'Roses' (1902) incorporates the delicate optically blown, translucent amber-colored glass into the composition (cat.-no. 25).



15

Amédée de Caranza Vase 'Marrons', c. 1895-1900

H. 20.8 cm. Mold-blown glass, chestnut decoration in relief with leaves and fruits; oxide painting. Signed under the lip: A. DE CARANZA (luster writing).

Cf. Hilschenz-Mlynek/Ricke, Hentrich glass collection, Kunstmuseum Düsseldorf, Munich 1985, no. 21.

€ 4.000 - 5.000



16
Amédée de Caranza
Two vases 'Fleurs de Trompette', c. 1900
 H. 18.1-18.3 cm. Colorless glass, painted with reduction colors. Comprehensive decor with trumpet flowers, iridescent metallic. Signed on the foot: A. de CARANZA (luster writing). On the ground: 6147 OM.
€ 2.500 - 3.500

17
Amédée de Caranza
Vase 'Sagittaire', c. 1900
 H. 25.2 cm. Colorless glass, painting in reduction colors, lustrous in different metallic tones, decor with arrowhead. Foot signed: A. de CARANZA (luster writing).
€ 1.600 - 2.600

18
Amédée de Caranza
Six shot glasses c. 1900
 H. 4.9-5.6 cm. Glass, colorless or opalescent, painting in reduction colors, lustrous in different metallic tones, decorations with violets and berries, among other things. Each signed: A. de Caranza or CARANZA (luster writing).
€ 900 - 1.200





20

19

**Amédée de Caranza
Vase 'Sorbier', c. 1900**

H. 10.4 cm. Colorless glass, painted with reduction colors, iridescent metallic. Stylized decor with blossoms and leaves of mountain ash. Signed: A de CARANZA (luster writing).

€ 1.200 - 1.600

20

**Amédée de Caranza
Tall vase, c. 1900**

H. 37.8 cm. Colorless glass. Etched and painted with reduction colors. All-encompassing decor of stylized, diagonally twisted flower motifs, iridescent metallic. Signed in the lower wall area: A. de CARANZA (raised).

€ 3.800 - 4.800

21

**Amédée de Caranza
Small vase, c. 1903**

H. 9.4 cm. Made by H. Copillet, Noyon. Colorless glass, painted with reduction colors, iridescent metallic. Stylized decor with leaves. Signed: A. De CARANZA (luster writing). Inscribed on the ground: H. Copillet & Co. Noyon (Oise) No 1236 (luster writing).

€ 400 - 600

22

Amédée de Caranza; Jeanne Duc
Small vase, c. 1902

H. 12.6 cm. Colorless glass, painting in reduction colors, lustrous in different metallic tones, stylized floral decoration. Signed above the stand: DUC - A. de CARANZA (luster writing).

€ 500 - 800

23

Amédée de Caranza; Jeanne Duc
Vase 'Iris', c. 1902

H. 19.5 cm. Clear glass, painting in reduction colors, lustrous in different metallic tones, decorated with irises. Signed above the stand: DUC - A. de CARANZA (luster writing).

€ 900 - 1.200





24



25



26

24

**Amédée de Caranza; Jeanne Duc
Miniature vase, c. 1902**

H. 6.8 cm. Colorless glass, painting in reduction colors, lustrous in different metallic tones, stylized decoration with flowers and leaves. Signed: DUC - A de CARANZA (cluster writing).

€ 300 - 400

25

**Amédée de Caranza; Jeanne Duc
Vase 'Roses', c. 1902**

H. 14.5 cm. Amber-brown, optically blown glass, painting in reduction colors, lustrous in different metallic tones, decorated with wild roses. Signed: DUC - A de CARANZA (luster writing).

€ 800 - 1.200

26

**Amédée de Caranza; Jeanne Duc
Vase 'Algues', c. 1902**

H. 14.7 cm. Colorless glass, painting in reduction colors, lustrous in different metallic tones, decor with seaweed. Signed above the stand: DUC - A. de CARANZA (luster writing).

€ 1.200 - 1.800

27

**Amédée de Caranza; Jeanne Duc
Three shot glasses, c. 1902**

H. 5 cm. Opalescent glass, painted with reduction colors in red and brown tones, stylized decor with blooming blossoms, leaves and berries. Marked: DUC - A. de CARANZA (luster writing).

€ 450 - 650

28

**Amédée de Caranza; Jeanne Duc
Vase, c. 1902**

H. 22.5 cm. Colorless glass, painted with reduction colors, iridescent metallic. Stylized decor with flowers and leaves. Signed: DUC - A de CARANZA (luster writing).

€ 1.500 - 2.000





29

29

**Christian Frères et fils, Meisenthal
Vase 'Capucines', 1898-1907**

H. 15 cm. Cased glass, colorless and green. Etched and cut decor with nasturtiums. Bottom signed: F. Christian Meisenthal Lothr. (engraved).

Olland, Verrerie d'Art de Lorraine, Désiré Christian, Dijon 2010, No. 138.

€ 4.500 - 5.500

30

**Daum Frères, Nancy
Liquor flask, c. 1892**

With gilded silver mounting by Malvézieux Ainé. H. 15 cm (with mug). Colorless glass, optically blown. Engraved decor, heightened with gold, floral motifs. Signed: Daum Nancy, cross of Lorraine (gold signature). Mounting with bindweed motif. Stamped twice: Head of Minerva, workshop signet. Image online.

€ 450 - 650

31

**Daum Frères, Nancy
Vase for the 1893 Chicago World's Fair**

H. 25.2 cm. Cased glass, green and seal red. Etched and gilded decor with rising lion, lilies and roses on the back. Bottom signed: Daum Nancy, Cross of Lorraine (engraved). Gilded silver mounting on the foot. Marked.: Minerva head (faint), manufacturer's mark. The decor shows the coat of arms of Jean de Luxembourg-Ligny.

Bardin, Daum une industrie d'art lorraine, Metz 2004, p. 121 original photo of the Chicago World Fair 1893, upper row, 2nd from the left.

€ 1.000 - 2.000

32

**Daum Frères, Nancy
Small vase 'Paysage lacustre', c. 1893**

H. 10 cm. Glass, colorless. Etched, gilded and painted with black solder, lily of the valley decor on a rough background. Front side in rocaille view of a tree-lined lake. Signed: Daum, Cross of Lorraine, Nancy (gold signature).

€ 1.000 - 1.500



31

33

**Daum Frères, Nancy
Goblet 'Violettes, Papillon', c. 1894**

H. 13 cm. Cased glass, colorless and violet, partially with opalescent white, streaked powder inclusions and burst silver foil between the layers. Etched and finely carved decoration with a violet and a butterfly, the ground completely reworked with the wheel. Foot with stylized decor. Signed on the bottom: Daum Nancy with plant (engraved, gold rubbed, in front of a martelé-cut background).

Foot with a shell-shaped crack and a bevelled edge.

This model was presented in 1894 at the 'Art décoratif et industriel lorrain' exhibition in Nancy. Ricke/Schmitt, Gerda Koepff glass collection, Kunstmuseum Düsseldorf, Munich 1998, p. 60, historical photo, top right (there 'Violettes fanées', fading violets).

€ 800 - 900



32

34

**Edmond Lachenal, Paris
Decanter with glasses 'Gui', c. 1895**

H. 12.5-13 cm. Made by Daum Frères, Nancy. Colorless glass, optically blown, gold-contoured decoration of mistletoe branches with berries in green and white enamel on the base and bowl. Marked: EL, ELachenal (gold signature). Carafe incised on the bottom: 32.

Exh. cat. Nancy 1900, Munich Municipal Museum, Mainz 1980, Nr. 408 (pieces of the Faïence service by Keller & Guérin); Cat. Jugendstil im Landesmuseum Mainz, Mainz 1990, No. 174.

€ 900 - 1.200

35

**Daum Frères, Nancy
Tall vase 'Chardons de Lorraine', c. 1896**

H. 31 cm. Cased glass, colorless and pink. Etched, engraved and gilded. Decor with blooming thistles on a rough ground. Bottom signed: Daum, Cross of Lorraine, Nancy (needle engraving).

Cf. Hilschütz-Mlynek/Ricke, Hentrich glass collection, Kunstmuseum Düsseldorf, Munich 1985, no. 38.

Image online.

€ 800 - 900



33



34

36

Daum Frères, Nancy

**Vase 'Populages des marais et
toile d'Araignée' with silver-over-
lay, c. 1898**

H. 23.5 cm. Cased glass, colorless, pink
and matt dark green. Etched, engraved and
heightened with gold. Decor with marsh
marigolds and a spider in its web. Bottom
signed: Daum Nancy, cross of Lorraine
with plant (engraved). Neck and back with
similarly designed silver mountings by Tixier
Deschamps Paris.

€ 3.000 - 4.000



37

Daum Frères, Nancy

'Pissenlit' - 'Chandelle' vase, 1898-1900

H. 30.2 cm. Cased glass, colorless, pink and dark green.
Etched and engraved decoration with dandelions, en-
graved seeds. Background almost completely martelé-cut.
Signed: DAUM, Cross of Lorraine, NANCY (engraved, gold
rubbed).

€ 5.800 - 6.500



38

Daum Frères, Nancy

Vase 'Chandelles et dents de lion', c. 1910

H. 22.5 cm. Cased glass, clear, blue and violet or greenish and yellowish powder inclusions, milky opalescent greenish and whitish enamel fusions. Etched decoration of dandelions with blossoms, finely reworked with the wheel, as well as three seed heads as large, engraved applied cabochons. Signed above the base: DAUM, Cross of Lorraine, NANCY (engraved).

€ 3.000 - 4.000



39

Daum Frères, Nancy
Small Martelé Vase 'Iris', 1898-1903

Club shape. H. 17.1 cm. Cased glass, colorless, slightly pink and dark green. Etched and engraved decor with faded iris. The base is almost completely worked in Martelé cut. Bottom signed: DAUM NANCY, Cross of Lorraine (engraved and gold rubbed).
€ 1.200 - 1.600

40

Daum Frères, Nancy
'Delft' dish, c. 1898

H. 4.1 cm, 13.5 x 13.7 cm. Cased glass, milky opalescent and colorless. Etched motif of a Dutch harbor with sailing boats in black solder. Signed on the bottom: Daum, Cross of Lorraine, Nancy (remains of the gold signature).
€ 500 - 700



40

41

Daum Frères, Nancy
Martelé vase 'Tulips', c. 1898

H. 18.5 cm. Cased glass, colorless and opalescent, raspberry red and dark green. Etched decor with tulips, reworked with the wheel, martelé-cut background. Signed on the bottom: DAUM NANCY, Cross of Lorraine (engraved and rubbed with gold).

Cf. on the technique: Daum, *Daum Maîtres Verriers*, Lausanne 1980, p. 48, reproduction of a sample panel from the 'Tulipes perroquet' manufactory; other vases in a comparable technique: Hilschenz-Mlynek/Ricke, *Glass Collection Hentrich Düsseldorf*, Munich 1985, p. 80 f.

€ 2.800 - 3.600



39



41



42

42

Henri Berge
'Pluviose' - 'Une pluie' bowl, 1900

H. 4.2 cm, 15 x 16 cm. Made by Daum Frères, Nancy. Cased glass, pink and light green powder inclusions. Etched decor heightened with black solder. Motif with bare birch trees bending under a spring shower. Signed on the bottom: Daum Nancy, Cross of Lorraine (remains of black solder).

Cf. Ricke/Schmitt, Gerda Koepff Glass Collection, Kunstmuseum Düsseldorf, Munich 1998, no. 90, detailed discussion of the various versions and exhibitions.

€ 3.000 - 4.000

43

Daum Frères, Nancy
'Raisins' vase, c. 1900

H. 23 cm. Cased glass, opal white, clear and orange, burst gold foil. Etched pattern, worked with the wheel, vine in autumn at sunset. Signed: DAUM NANCY, cross of Lorraine (engraved and gilded).

€ 1.800 - 2.400

44

Henri Bergé
Martelé Vase 'Tulipes', c. 1900

Slim club shape on a trumpet foot with a stepped lip rim. H. 29.7 cm. Made by Daum Frères, Nancy. Cased glass 'Pâte ivoire', milk white, yellowish, colorless and green. Etched and ground decor on a martelé ground, motif with blooming tulips. Signed on the base: DAUM NANCY, Cross of Lorraine (engraved).

Cf. Ricke/Schmitt, Gerda Koepff Glass Collection, Kunstmuseum Düsseldorf, Munich 1998, p. 203, discussion of this series of decors and design panel with this form.

€ 2.000 - 3.000



43

45

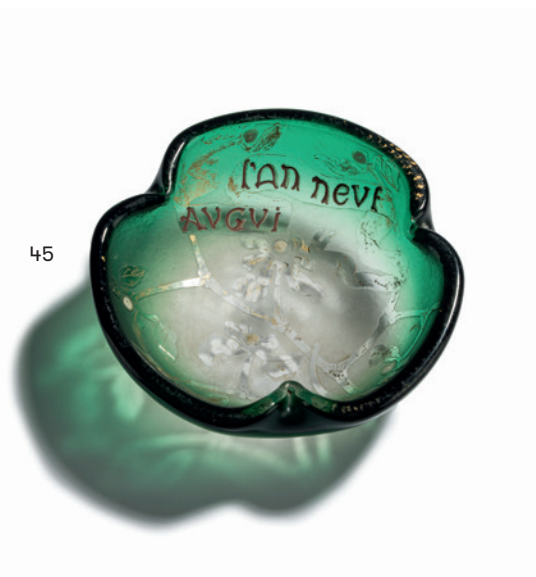
Daum Frères, Nancy
Decorative bowl 'au gui, l'an neuf', c. 1900

H. 4.6 cm, 14.3 x 14.5 cm. Made by Daum Frères, Nancy. Cased glass, colorless and green. Etched decor, heightened in gold, with mistletoe, the berries enameled in white, and banner 'Au gui l'an neuf' in rust-red, rough ground. Signed on the bottom: Daum Nancy, Cross of Lorraine (gold signature).

€ 800 - 1.200



45



46

Henri Bergé
'Pluviose' - 'Une Pluie' vase, c. 1900

H. 12 cm. Made by Daum Frères, Nancy. Cased glass, pink and light green powder inclusions. Etched decor heightened with black solder. Motif with bare birch trees bending under a spring shower. Signed on the bottom: Daum Nancy, Cross of Lorraine, L (black solder).

Cf. Ricke/Schmitt, Gerda Koepff Glass Collection, Kunstmuseum Düsseldorf, Munich 1998, no. 90, detailed discussion of the various versions and exhibitions.

€ 6.000 - 7.000

46





47

47
Daum Frères, Nancy
'Tulipes' flacon, c. 1901

H. 13 cm. Cased glass, colorless, green and pink powder inclusions. Etched and enameled tulip decoration on a rough background, heightened with gold. Bottom signed: Daum, Cross of Lorraine, Nancy (gold signature). Stopper and muzzle with the same engraved mark.

Cracked stopper at the bottom.

€ 3.000 - 3.500



48

48

Daum Frères, Nancy
Vase 'Muguet', c. 1900

H. 27.6 cm. Cased glass, colorless, white, ivory white and green. Etched decor with lilies of the valley, reworked with the wheel, on a martelé-cut background. Signed on the bottom: Daum Nancy Cross of Lorraine (engraved).

Cf. Ricke/Schmitt, Gerda Koepff glass collection, Kunstmuseum Düsseldorf, Munich 1998, no. 96 (with reproduction of a drawing with 'Muguet' decor and color indication 'Pâte ivoire').

€ 2.200 - 2.800

49

Daum Frères, Nancy
Miniature vase 'Coquelicots', c. 1900

H. 12.3 cm. Cased glass, colorless, lemon-yellow and rust-brown powder inclusions in the lower wall area, roughed, enameled and heightened with gold. Decor of a meadow landscape with blooming corn poppies in different stages of growth. Signed on the bottom: Daum Nancy, Cross of Lorraine (gold signature).

€ 2.400 - 3.400

50

Henri Bergé
Miniature vase 'Tulipes', 1901

H. 11.8 cm. Made by Daum Frères, Nancy. Cased glass, colorless, opal white, pink and green powder inclusions. Etched and enameled decor with tulips, friezes heightened with gold, rough background. Signed on the bottom: Daum Nancy, Cross of Lorraine (gold signature).

€ 2.500 - 3.500



49



50



51



52

51

**Daum Frères, Nancy
Tall vase 'Daturas', c. 1900**

H. 58.8 cm. Cased glass, colorless, lemon yellow and green powder inclusions in the lower area and light bluish in the upper area. Etched, gold-contoured decor painted in delicate colors, surrounding motif with hanging datura blossoms (angel's trumpet), rough background. Bottom signed: Daum Nancy, Cross of Lorraine (gold signature).

Cf. exh. cat. Daum Nancy, *Maitres verriers*, Zurich 1986, No. 31; Cat. Collection Daum, Paris 2004, No. 184 f. (Decor).

€ 8.000 - 12.000

52

**Daum Frères, Nancy
Bowl 'Daturas', c. 1900**

H. 13.4 cm. Cased glass, colorless, lemon yellow and green powder inclusions in the lower area and light bluish in the upper area. Etched, gold-contoured decor painted in delicate colors, surrounding motif with hanging datura blossoms (angel's trumpet), rough background. Signed on the bottom: Daum Nancy, Cross of Lorraine, LS (remains of the gold signature).

Cf. exh. cat. Daum Nancy, *Maitres verriers*, Zurich 1986, no. 31; Cat. Collection Daum, Paris 2004, no. 184 f. (decor).

€ 3.000 - 4.000



53



54

53
Daum Frères, Nancy
Miniature vase, c. 1901

H. 12 cm. Cased glass, colorless, opal white, green and violet powder inclusions. Etched and enameled decoration with panicles of flowers, heightened with gold. Bottom signed: Daum, Cross of Lorraine, Nancy (gold signature).

€ 2.500 - 3.500

54
Daum Frères, Nancy
Miniature vase 'Paysage en été', c. 1902

H. 3.9 cm. Cased glass, colorless, yellow and green. Etched and enameled decor with black solder and a summery tree landscape. Signed: Daum, Cross of Lorraine, Nancy (black solder).

€ 1.400 - 1.800



55

55
Daum Frères, Nancy
Martelé vase 'Roses patinées, insectes', 1903

H. 9.5 cm. Cased glass, colorless and pink. Decor entirely engraved with the wheel, motif with blooming roses, two insects backed with metal foils, ground in Martelé cut. Signed on the bottom with Martelé cut: Daum Nancy, Cross of Lorraine with flower tendril (engraved and gilded).

Cf. Daum, Daum maîtres verriers, Lausanne 1980, p. 95, with a description of this technique, this vase also in cat. Daum, la Collection du Musée des Beaux Arts de Nancy, Paris 2000, no. 259; Hilschenz-Mlynek/Ricke, Hentrich glass collection, Kunstmuseum Düsseldorf, Munich 1985, no. 66.

€ 2.000 - 3.000



56

56

Henri Berge

'Vigne à l'automne' bowl, 1903-04

H. 11.5 cm, Ø 21 cm. Made by Daum Frères, Nancy. Cased glass, colorless, yellowish, orange and violet powder inclusions, red, orange and dark blue vitrifications. Inside and outside etched decor with autumnal vine tendrils. Signed in the bowl: DAUM NANCY, Cross of Lorraine (raised).

€ 1.800 - 2.200

57

Henri Bergé; Ernest Schneider

Small Vase 'Libellule et renoncules jaunes', c. 1904

H. 14.1 cm. Made by Daum Frères, Nancy. Cased glass, colorless, milky bluish opalescent powder inclusions in the upper area, deep violet powder inclusions in the lower area, enamel fusions (Vitrifications) in different shades of green and yellow. Etched decor, surrounding pond landscape with ranunculus and water lily leaves. Soaring dragonflies as a partial edition. Bottom signed: DAUM NANCY, Cross of Lorraine (engraved). Dragonfly slightly trimmed at the top.

€ 1.500 - 1.800



57



58

58

Daum Frères, Nancy
'Chicorée des prés' vase, 1905-08

H. 23.9 cm. Cased glass, colorless, white, yellowish and blue powder inclusions, blue and mint green. Etched decor with flowering chicory (*cichorium intylius*) and grasses, the large flowers reworked with a wheel. Signed: Daum Nancy, Cross of Lorraine (engraved).

Daum, Daum master glassmakers, Lausanne 1980, S. 109; Kat. Daum Collection, Tokio 1987, No. 42 (Dekor).

€ 2.000 - 2.800



59

59

Henri Bergé
Vase 'Pommier en fleurs', c. 1905

H. 32.2 cm. Made by Daum Frères, Nancy. Cased glass, colorless, whitish, orange and violet powder inclusions, green and white enamel fusions. Etched and enameled decor with blossoming apple branches. Signed: DAUM NANCY, Cross of Lorraine (raised).

Cf. cat. Collection Daum, Paris 2004, No. 179.

€ 2.000 - 2.500

60

Daum Frères, Nancy
Vase 'Bois gentil', c. 1906

H. 31.6 cm. Cased glass, colorless, milk white, orange and light green powder inclusions. Etched and enameled decoration with daphne. Signed: DAUM NANCY, Cross of Lorraine (raised).

€ 2.000 - 3.000

61

Daum Frères, Nancy
Vase 'Paysage mauve', 1907

H. 16.1 cm. Cased glass, colorless and milk white, slightly pink. Etched, heightened with black solder and polychrome enameled decoration with a tree landscape at dawn. Signed: DAUM, Cross of Lorraine, NANCY (violet).

Cf. Bardin, Daum une industrie d'art lorraine, Metz 2004, p. 177.

€ 1.200 - 1.600



60



61



62

Daum Frères, Nancy
'Iris rose' vase, c. 1908

H. 49.5 cm. Cased glass, colorless with greenish powder inclusions, milky pink and dark brown. Etched decor with irises of which two large blossoms and two buds were finely engraved with the wheel. Signed: DAUM NANCY, Cross of Lorraine (raised). Bottom: remnant of a paper label.

Hilschenz-Mlynek/Ricke, Hentrich glass collection, Kunstmuseum Düsseldorf, Munich 1985, no. 80.

€ 8.000 - 12.000

63

Daum Freres, Nancy
'Iris' table light, 1908

With a Foot by Louis Majorelle. H. 33.4 cm. Colorless shade, ribbed, matted. The foot in the shape of a blooming iris made of brass.

€ 1.800 - 2.000





64

64
Daum Frères, Nancy
Vase 'Mûres en automne', c. 1910

H. 11.8 cm. Cased glass, colorless, wine-red and green powder inclusions, predominantly violet, reddish-brown and green enamel fusions (Vitrifications). Etched decor, motif with autumnal blackberry branches. Signed: DAUM NANCY, Cross of Lorraine (raised).

€ 900 - 1.200



65

65
Daum Frères, Nancy
Bowl 'Voiliers, soleil couchant', c. 1910

H. 10.1 cm, Ø 20.5 cm. Cased glass, lemon yellow and slightly greenish, red powder inclusions, deep violet enamel. Etched decor with a coastal landscape, numerous sailing boats in an evening mood on a polished background. Signed: DAUM NANCY, Cross of Lorraine (raised).

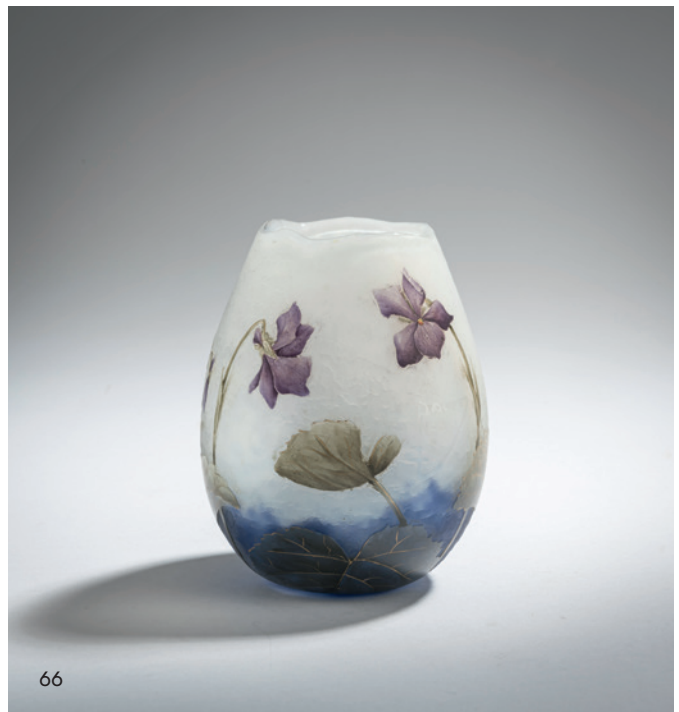
€ 1.500 - 2.500

66
Daum Frères, Nancy
Small 'Violettes' vase, c. 1910

H. 9.7 cm. Cased glass, colorless, milk white, blue powder inclusions in the lower area. Etched and enameled decor with blooming violets, heightened with gold. Signed: DAUM NANCY, Cross of Lorraine (raised).

Hilschenz-Mlynek/Ricke, Hentrich glass collection, Kunstmuseum Düsseldorf, Munich 1985, no. 71.

€ 1.400 - 1.800



66

67

Daum Frères, Nancy
Vase 'Plumes de Pâon', c. 1910

H. 11.5 cm. Cased glass, colorless, milky light blue and dark violet powder inclusions, dark green enamel fusions (Vitrifications), decor of three peacock feathers, the 'peacock eyes' as partial turquoise-blue and deep violet fusions. Signed: DAUM NANCY, Cross of Lorraine (raised).

Cf. cat. Museum Bellerive, Zurich 1986, no. 82, Berluze with identical decor, further reading there.

€ 2.000 - 2.400

68

Daum Frères, Nancy
Vase 'Violettes', c. 1910

H. 12.5 cm. Cased glass, colorless, milk white, blue powder inclusions in the lower area. Etched and enameled decor with blooming violets, heightened with gold. Signed: DAUM NANCY, Cross of Lorraine (raised).

Hilschenz-Mlynek/Ricke, Hentrich glass collection, Kunstmuseum Düsseldorf, Munich 1985, no. 71.

€ 2.400 - 2.800



69

Daum Frères, Nancy
Miniature vase 'Coeur de Jeanette', c. 1910

H. 9.9 cm. Cased glass, colorless and opalescent. Etched, enameled and gilded decor with bleeding hearts on a rough background. Inscription: Coeur de Fleur fleur du coeur (gold). Bottom signed: Daum, Cross of Lorraine, Nancy (gold signature).

€ 2.400 - 2.800





70

70

**Daum Frères, Nancy
Table light 'Marronnier', c. 1905**

H. 61 cm, Ø 25.7 cm. Cased glass, colorless and opalescent with powder fusion in orange and yellow. Brass base with greenish and reddish patina.

€ 3.000 - 4.000

71

**Daum Frères, Nancy
'Paysage lacustre' table light, c. 1910**

H. 37 cm. Cased glass, colorless, azure, emerald green and deep violet, white and orange powder inclusions. Etched meadow landscape. Signed on the wall: DAUM NANCY, Cross of Lorraine (raised). Shade signed: DAUM NANCY, Cross of Lorraine (raised).

€ 4.000 - 5.000



71

72
Daum Frères, Nancy
Table light, c. 1910

H. 46 cm. Clear glass, powder fusions, green and yellow. Signed: DAUM NANCY, cross of Lorraine (engraved). Cast brass base.
€ 1.800 - 2.200



73

73
Daum Frères, Nancy
Bowl 'Voiliers, soleil couchant', c. 1910

H. 10.2 cm. Cased glass, lemon yellow and slightly greenish, red powder inclusions, deep violet enamel. Etched decor with a coastal landscape, numerous sailing boats in an evening mood on a polished background. Signed: DAUM NANCY, Cross of Lorraine 652 (raised).
€ 1.200 - 1.800



72



74

74
Daum Frères, Nancy
Vase 'Paysage lacustre', c. 1910

H. 11.2 cm. Cased glass, colorless, with powder inclusions, yellow, orange and brown. Etched decor with a tree-lined meadow landscape. Signed: DAUM NANCY, Cross of Lorraine (raised).

€ 1.000 - 1.500



75

75
Daum Frères, Nancy
Vase 'Anémone des prés', c. 1910

H. 6.2 cm. Cased glass, colorless and violet, blue and yellowish powder inclusions. Etched decoration with a blooming pasque flower (*Pulsatilla pratensis*) in a nocturnal mood. Signed: DAUM NANCY, Cross of Lorraine (raised).

Cf. Cat. Collection Daum, Tokyo 1987, no. 33 (decor).

€ 1.000 - 1.500



76

76
Daum Frères, Nancy
'Eucalyptus' table light, c. 1912

H. 37 cm. Lamp shade in cased glass, colorless, red and green, with yellow and red powder inclusions. Etched decor with eucalyptus branches with flowers and fruits. Signed: DAUM NANCY, Cross of Lorraine (engraved). Cast brass.

€ 1.300 - 1.600



77

77
Daum Frères, Nancy
Vase 'Monnaie du pape', 1912-13

H. 12.1 cm. Cased glass, colorless, opal white, pink and green. Etched decor with Pope's money on a rough background; Leaves coated pearlescent, gilded. Gold-plated base and lip. Bottom signed: Daum, Cross of Lorraine, Nancy (gold signature).

Cf. Daum, Daum maîtres verriers, Lausanne 1980. p. 115 (Decor).

€ 1.500 - 1.800



78

Daum Frères, Nancy

Tall vase 'Paysage lacustre', c. 1912

H. 63.5 cm. Cased glass, colorless, lemon yellow and orange powder inclusions and dark brown. Etched decor with a shore landscape in the changing light of the setting sun. Signed: DAUM NANCY, Cross of Lorraine (raised).

€ 3.500 - 4.200



79



80



81

79

**Daum Frères, Nancy
Vase 'Gentiane rouge', c. 1912**

H. 18 cm. Cased glass, colorless, opal white and orange, distorted powder inclusions and brown. Etched decor with gentians. Signed: DAUM NANCY, Cross of Lorraine, FRANCE (raised).

€ 1.400 - 1.800

80

**Daum Frères, Nancy
Vase 'Sorbier', c. 1914**

H. 18.5 cm. Cased glass, colorless and milk white, burgundy and amber powder inclusions. Etched and polychrome enameled decor with rowan twigs (*Sorbus aucuparia*). Signed: DAUM NANCY, Cross of Lorraine (raised).

Cf. Hilschenz-Mlynek/Ricke, Hentrich glass collection, Kunstmuseum Düsseldorf, Munich 1985, no. 118 (decor).

€ 1.400 - 1.800

81

**Daum Frères, Nancy
Berluze 'Mange-tout', c. 1915**

H. 51 cm. Cased glass, colorless, vanilla yellow and orange powder inclusions and brown. Etched decor with flowering peas. Signed: DAUM NANCY, Cross of Lorraine (raised).

€ 1.500 - 2.500

82

Daum Frères, Nancy
Berluze 'Mûres en automne', c. 1915

H. 47.2 cm. Cased glass, colorless, yellowish and brownish enamels. Etched decoration with autumnal blackberry branches. Signed: DAUM NANCY, Cross of Lorraine (raised).

Image online.

€ 650 - 850

83

Daum Frères, Nancy
Tall 'Verre de Jade' table light, 1918-25

H. 50 cm. Verre de jade, cased glass, colorless and mauve, light blue and deep violet powder inclusions, burst precious metal foils. Unsigned. Mounting made from wrought iron, blackened.

€ 2.200 - 2.800

84

Henri Bergé; Emile Wirtz
'Primevère' Vase, 1919

H. 20.5 cm. Executed by Daum Frères, Nancy. Cased glass, colorless, extensive orange, dark blue powder inclusions in the lower area, dark green, yellowish and pink colored enamel fusions (Vitrifications). Etched decoration with flowering primroses, the flowers as partial opal white overlays, finely worked in high cut with the wheel (Lamelles ciselées à la roue). Signed: DAUM NANCY, Cross of Lorraine (engraved).

Ricke/Schmitt, Gerda Koepff glass collection, Kunstmuseum Düsseldorf, Munich 1998, no. 120, with reproduction of the sample plate from the manufactory archive with registered form number 4100.

€ 2.000 - 3.000



83



84



88

85

Daum Frères, Nancy
Vase 'Verre de Jade', 1919-23

H. 15 cm. Cased glass, colorless with orange-brown and whitish powder inclusions, with brown and green fusions on the base. Signed: DAUM NANCY, Cross of Lorraine (engraved).

Image online.
€ 300 - 350

86

Daum Frères, Nancy
Table light, c. 1920

H. 38.5 cm. Cased glass, colorless, red and orange powder inclusions, matted. Signed: DAUM, Cross of Lorraine, Nancy (engraved). Polished bronze base.

€ 1.200 - 1.600

87

Verrerie de Belle-Etoile Daum et Cie., Croismare;
Edgar Brandt, Nancy
Table light, c. 1925

H. 33 cm, Ø 10.3 cm. Cased glass, colorless, polychrome powder inclusions, matted. Signed: Lorrain (enameled). Wrought iron base, brown patina, by Edgar Brandt. Signed: E.BRANDT (embossed).

Lampshade damaged. Must be re-electrified.
€ 800 - 1.200 (Standard Taxation)



86

88

**Daum Frères, Edgar Brandt, Nancy
Table light with wrought iron base,
c. 1925**

H. 37 cm, Ø 18 cm. Cased glass, colorless,
polychrome powder inclusions, matted.
Signed: DAUM, Cross of Lorraine, NANCY (en-
graved). Wrought iron base, brown patina, by
Edgar Brandt. Signed: EBRANDT (embossed).
€ 2.000 - 3.000 (Standard Taxation)

89

**Daum Frères, Nancy
Table light, c. 1930**

H. 45 cm, Ø 18 cm. Cased glass, colorless,
powder fusions in yellow, orange and violet.
Signed: DAUM, Cross of Lorraine, FRANCE
(needle etching). Wrought iron foot.
€ 1.500 - 1.800



87



89



90

90

**Daum Frères, Nancy
Tall vase, c. 1930**

H. 25.2 cm, Ø 26.8 cm. Mold-blown uranium green glass, etched. Signed: DAUM, Cross of Lorraine, NANCY FRANCE (engraved).
€ 1.600 - 2.000

91

**Daum Frères, Nancy
Bowl, c. 1930**

H. 10.5 cm, Ø 17.5 cm. Thick-walled colorless glass. Etched. Signed: DAUM, Cross of Lorraine, NANCY FRANCE (engraved).
€ 500 - 700



93



92

**Daum Frères, Nancy
Vase, c. 1930**

H. 21.1 cm. Amber glass, etched. Signed:
DAUM, Cross of Lorraine, NANCY FRANCE
(engraved).

€ 800 - 1.200

93

**Daum Frères, Nancy
Table light, c. 1930**

H. 42 cm. Colorless glass with etched ge-
ometric decoration, reddish patina. Shade
signed on the edge: DAUM NANCY FRANCE,
Cross of Lorraine (needle etching).

€ 4.000 - 5.000

94

**Daum Frères, Nancy
Huge vase, c. 1930**

H. 38 cm. Amber glass. Signed: DAUM, Cross
of Lorraine, NANCY FRANCE (engraved).

€ 2.000 - 3.000



95

Louis Damon, Paris
Vase 'Triton', c. 1895

H. 14.9 cm. Made by Daum Frères, Nancy. Cased glass, colorless, opalescent and violet. Completely wheel-cut decor with conch blowing Triton seated on a whale. Signed on the bottom: Louis Damon 20 Boulevard Malsherbes, Daum, cross of Lorraine, Nancy (engraved). Louis Damon, owner of the glass and porcelain shop 'Au Vase Etrusque' opened his own glass processing workshop in 1889-1905, the vases were mostly produced by Daum Frères in Nancy. Damon also sold Emile Gallé vases.

€ 7.000 - 8.000



96

**Camille Tutré de Varreux, Cristallerie de Pantin
Vase 'Paysage lacustre', 1915-20**

H. 15.3 cm. Cased glass, colorless, lemon yellow, raspberry red and blue. Etched decoration with surrounding lake landscape with sailing boats in the sunset. Signed: De Vez (raised).

Image online.

€ 500 - 700

97

**André Delatte, Nancy
Vase 'Magnolias', c. 1925**

H. 32 cm. Cased glass, colorless, white and pink. Etched decor with magnolia blossoms. Signed: ADelatte Nancy (raised).

€ 1.500 - 2.500

98

**Georges Despret, Jeumont
Cachepot with Bathers, 1900-10**

H. 13.5 cm, Ø 21 cm. Pâte de verre, translucent glass gather, molded, predominantly blue and ivory white. Bottom signed: Despret (incised).

Neck of one of the women restored.

€ 3.000 - 3.600



97



98



99

99

Emile Gallé, Nancy
Rare 'Libellule' vase, 1880s

H. 9.6 cm. Cased glass, light blue opalescent and colorless. Polychrome enameled decor. Pond landscape with two frogs and a dragonfly. Signed: Gallé (enameled).

Also included: invoice from the Etablissements Emile Gallé for a purchase made on July 20, 1925 (framed).

€ 1.500 - 2.500

100

Emile Gallé, Nancy
Small 'Clair de Lune'-'Epis de blé et Insectes' vase, 1884-89

Two-sided flattened oval on a round stand with an oval lip. H. 12.1 cm. Cased glass, colorless, pale green and vanilla yellow. Etched and polychrome enameled decoration with ears of wheat, two butterflies and a beetle on a rough background. Signed: Gallé (raised).

Cappa, L'Europe de l'Art verrier, Liège 1991, p. 181, No. 314.

€ 2.000 - 2.500



100

Emile Gallé - Alchemist of Art Nouveau

It is rare to be able to admire such a wide range of Emile Gallé's works at auction. The more than 40 vases created during Gallé's lifetime come from four German and Austrian private collections. The stylistic and technical diversity of Gallé's oeuvre is almost completely documented and his world of motifs is impressively and extensively shown. Overlay techniques and marquetry, inclusions of foils, oxides and other materials, the so-called patinage, as well as melting of cabochons and spinning to name the techniques in the hot state. Various cutting techniques, such as engraving or martelé and etching, enamel painting to name the techniques in the cold state. Historicist motifs, the mysterious world of symbolism, Japonism and Gallé's love for the plant world determine the representations on Gallé's works. All this can be admired in the glass objects, which were created in the period around 1878 until shortly before Gallé's death in 1904.

The earliest works in the auction were created long before the flowering of Art Nouveau. Around 1878 he created the small vase made of clear glass 'Chasse' (cat.-no. 101). At that time, Gallé favored clear glass. It refers to works from earlier eras made in rock crystal. The hunting scene drawn in needle etching shows a hunter in fashionable 18th century clothing. The engraved volutes and palmettes and also the enameled borders are in Renaissance style. Works of this type were probably also shown at the Paris World's Fair of 1878, where Emile Gallé presented himself for the first time exclusively with his own works of art and not with those of his father's ceramic production. At this world exhibition, Gallé also showed the so-called 'Clair de Lune' glass, a pale, slightly opalescent colored flashed glass. Four vases of this type are offered at the auction (cat.nos. 99, 100, 109, 111). One of these vases, the 'Epis de blé et Insectes', made in the second half of the 1880s, already shows clear hints of Art Nouveau. The color palette is still restrained, the basic tone shimmering green, the decoration, with its wheat ears and various insects, is in the naturalistic Japonistic style that was so important for the development of Art Nouveau.

Two vases, both of symbolic character, date from 1894. The nearly 50 cm high vase 'Erable en automne avec toile d'araignée' (cat.-no. 117) shows a large sculptural applied spider in its web amid bright red leaves of autumnal vine leaves. In the form of a rhinoceros tusk, Gallé created a vase also decorated with vine leaves, showing this in a nocturnal mood (cat. no. 118). Gallé liked to make use of the symbolist-mystical motif palette in special works. He had a great general education, especially in literature, was politically engaged and an expert in the world of botany. The choice of animals and plants as well as the depicted seasons, times of day and weather was never random. These connections are quite obvious in the use of spiders, bats or moths, or in the floral motifs of poisonous and medicinal plants, plants with intoxicating effects, nightshade plants or plants with erotic connotations.

In the late 1890s, Gallé created two vases in the same color palette that are offered in the auction. In 1897/98 he created the flat marqueterie handle vase 'Colchiques' (cat.-no. 126) in amber and violet. Marquetry is an extremely elaborate technique in which colored glass plates are rolled onto the body. Great technical skill and care must be exercised here, as the shape of the applied platelets can hardly be changed once they adhere to the glass body. However, when done well, the effect is much stronger than motifs worked out by cutting or etching. In the case of the small vase, a violet and an amber-colored autumn crocus flower can be seen, standing in a hazy mood amidst streaky, distorted violet bands. The hazy autumnal mood is further caused by tiny melted-in 'impurities', which appear as a bubbly cloudy intermediate layer and were described by Gallé as 'patinage'. The depicted meadow saffron is regarded as a symbol of transience due to its late blooming, the colchicine contained in it possesses besides its healing effect at low dosage a lethal effect when dosed higher. A vase with the cut orchid motif of the cattleya shows the same color palette and was created by Gallé around 1900 (cat. no. 136). Technically very versatile, the vase was decorated with foil inclusions and also with a beautiful 'patinage'. The entire surface is intricately cut. The clarity of the erotic connotation of the motif becomes clear when one considers that Marcel Proust used 'Playing Cattle' as an erotic code word between the protagonists in his series of novels 'In Search of Lost Time' published a little later.

In 1898, Emile Gallé developed a surface treatment technique he called 'patine'. Gallé took advantage of a surface matting caused by impurities in the glass furnace, which one would normally want to avoid in glass production. Using a controlled process, he created a matte shimmering, slightly textured and iridescent surface. In the case of the goblet vase 'Pissenlit' (cat.-no. 128) this effect is only partially applied to the surface, probably with the help of stencils. Only the round fruit clusters, called dandelions, are brought to life in this technique.



101

101
Emile Gallé, Nancy
Small historicizing vase 'Chasse', c. 1878

Baluster shape. H. 13 cm. Colorless glass. Etched motif of a Rococo hunter shooting a stag with a rifle, hunting dogs; rubbed gold. A stylized floral motif runs all the way around the shoulder. The edge of the mouth and the foot or wall enameled in places. Signed: Emile Gallé (needle etching).

€ 1.600 - 1.800



102

102
Emile Gallé, Nancy
Small Japanese style vase, c. 1880

H. 11 cm. Brown glass, polychrome enamel decoration. Sign.: E. Gallé à Nancy (black solder).

€ 700 - 800



103

103
Emile Gallé, Nancy
Wine glass, 1884

H. 11.8 cm. Slightly brownish glass. Polished volute decoration. Handle base and foot with brown, black and blue stylized floral enamel. Signed: Emile Gallé à Nancy 1884 (engraved).

Letters engraved within the volutes.

Cf. exh. cat. *Émile Gallé et le Verre, la Collection du Musée de l'École de Nancy*, Paris 2004, No. 79.

€ 1.400 - 1.800



104

104

Emile Gallé; Eugene Kremer, Nancy
Jug 'Sauterelle', c 1885-89

H. 24.5 cm. Brownish glass, optically blown, partially etched. Polychrome enameled decor with poppy capsules, leaves, ferns and a grasshopper. Lip with silver collar. Marked: workshop mark in a lozenge.

Applied handle with defects at the bases. Cuff replaced with silver plated metal. Without stopper.

Cf. Klesse, Auf den künstlerischen Spuren Emile Gallés, Cologne 1982, p. 26; Duncan/de Bartha, Glass by Gallé, London 1984, p. 35, No. 5.

€ 2.000 - 2.500

105

Emile Gallé, Nancy
Small Vase 'Fougère', c. 1885

H. 13.5 cm. Green optically blown glass. Etched and enameled decoration with fern, dragonfly and other insect. Lip gilded.

Signed: Gallé (enameled).

€ 1.800 - 2.400

106

Emile Gallé
'Chaerophyllum' vase, 1889-95

H. 12.5 cm. Smoke-brown glass with vertical ribs. Etched and enameled decor with a calf's bolster. Signed: E. Gallé Nancy (engraved).

Cf. Hilschenz-Mlynek/Ricke, Hentrich glass collection, Kunstmuseum Düsseldorf, Munich 1985, no. 197.

€ 1.200 - 1.600



105

107

Emile Gallé, Nancy
'Chaerophyllum' vase, 1889-95

H. 10.8 cm. Glass, optically blown, etched and polychrome enameled decoration with calf's bolster. Signed: E. Gallé Nancy (engraved).

Cf. Hilschenz-Mlynek/Ricke, Glass coll. Hentrich, Kunstmuseum Düsseldorf, Munich 1985, No. 197.

€ 1.000 - 1.500



106



107



108

**Emile Gallé, Nancy
Quill bowl 'Feuille', c. 1889**

In the form of an elongated leaf. H. 3.2 cm, 27.2 x 7.5 cm.
Slightly greenish glass with color and metal oxide inclusions in dark blue, green and red, sides cut. Signed: Gallé (engraved).
Cf. Cat. Art of Gallé, Habsburg Feldman SA, Geneva 1988, no. 5.
€ 3.000 - 4.000

109

**Emile Gallé, Nancy
'Clair de Lune'-Vase, a scene with a young couple
in Persian style, c. 1889**

H. 15 cm. cased glass, colorless and pink opalescent; Representation of a young couple under a flowering bush, the rim of the mouth with a leaf frieze painted in multicolored enamel. Signed on the wall: Gallé (enameled).

Sketch of the painted motif in the Paris Musée d'Orsay in the style of Persian miniatures, see Thiébaud, Les dessins de Gallé, Paris 1993, p. 99, fig. 4.

€ 10.000 - 15.000





110

110

**Emile Gallé, Nancy
Tall 'Dahlias' vase, 1890-94**

H. 52.5 cm. Smoke brown glass, optically blown. Etched and enameled decor with fading chrysanthemums; heightened with gold. Signed: Japanese lettering Gallé (raised).

€ 8.000 - 9.000

111

**Emile Gallé, Nancy
Small 'Clair de Lune'-vase with
shore landscape and snail shells,
c. 1880**

H. 7 cm. Cased glass, clear and opalescent green with blurry white inclusions, surrounding enamelled decor with snail shells. Landscape with castle in Camaieu red indicated on the front. Signed: Cristallerie d'Emile Gallé E, Cross of Lorraine, G, Nancy, modèle et décor déposés (black solder).

Cat. Meisenthal, Berceau du Verre Art Nouveau, Meisenthal 1999, no. 29; cf. Duncan/de Bartha, Glass by Gallé, London 1984, p. 36, no. 7 a, ibid. p. 43, no. 22 (very similar decor).

€ 1.800 - 2.400

112

**Emile Gallé, Nancy
Small vase 'Dahlias', c. 1890**

H. 11.3 cm. Colorless glass, optically blown, polychrome enamel painting with flowering chrysanthemums. Signed on the bottom: E. Gallé (enameled).

€ 700 - 900



113

**Emile Gallé, Nancy
Jug 'Sceau de Salomon', c. 1890**

In the shape of a rolled leaf. H. 25.5 cm.
Glass, optically blown, slightly brownish
with applied bands as plant stems and a
small handle. Polychrome enameled decor
with leaves and berries of whorl-leaved
white borage. Bottom signed: Cristallerie
d'Emile Gallé Nancy, modèle et décor
déposés (Camaieu).

Pazaurek/Spiegl, Glas des 20. Jahrhunderts,
Munich 1983, p. 61, No. 87; Cat. Meisenthal,
Berceau du Verre Art Nouveau, Meisenthal
1999, No. 42; cf. cat. Nancy 1900, Munich
Municipal Museum, Mainz 1980, No. 70
(shape, faience, 1878).

€ 3.500 - 4.500



111



112



114

114

**Emile Gallé, Nancy
Six 'Fougère' shot glasses, c. 1890**

H. 6.1-6.6 cm. Brown optically blown glass. Etched, polychrome enameled decor with ferns and butterflies. Lip gilded. Applied handles. Signed: E. Gallé déposé (enameled).

One glass with crack from the top rim.

Klesse, Auf den künstlerischen Spuren Emile Gallés, Cologne 1982, p. 28; cf. Duncan/de Bartha, Glass by Gallé, London 1984, No. 5.

€ 2.500 - 3.500

115

**Emile Gallé, Nancy
Vase 'Chardons', c. 1889**

H. 35.5 cm. Reddish brown glass. Etched and enameled decor, edged in gold, with flowering thistles. Bottom signed: E Gallé with thistle (painted in gold). Exh. cat. Emile Gallé et le verre, la collection du Musée de l'Ecole de Nancy, Nancy 2004, No. 69 (Dekor).

€ 3.000 - 4.000



115

116

**Emile Gallé, Nancy
Small 'Anémones de Caen' vase, c. 1895**

H. 14.8 cm. Cased glass, colorless and violet. Etched decor with dahlias in a nocturnal mood. Fire polished. Bottom signed: Gallé déposé (needle etching). „This piece is one of the first to be fully decorated with acid etching and one of the last to be made at Meisenthal. This technique was later used on a large scale in Nancy, gradually replacing enameling in mass production.

Cat. Meisenthal, Berceau du Verre Art Nouveau, Meisenthal 1999, no. 40.

€ 600 - 700



116

117

Emile Gallé, Nancy

**Tall vase 'Erable en automne avec
toile d'araignée', 1894**

H. 48.7 cm. Cased glass, colorless and ruby red. Etched decoration, reworked with the wheel, with falling leaves of silver maple, spider web and appliquéd cabochon as a cross spider. Bottom signed: Cristallerie d'Emile Gallé à Nancy, modèle et décor déposés, 12 (etched with maple leaf).

Cf. Hilschenz-Mlynek/Ricke, Hentrich glass collection, Kunstmuseum Düsseldorf, Munich 1985, no. 207, with reproduction of the sketch; cf. Klesse/Mayr, Glass collection Funke-Kaiser, Kunstgewerbemuseum Cologne, Cologne 1981, No. 149.

€ 5.000 - 6.000





118

**Emile Gallé, Nancy
Ewer 'Vigne Vierge', 1894**

In the shape of a Chinese libation cup. H. 15.1 cm. Cased glass, colorless, dark green and amber brown, with powder and oxide inclusions and metal foil; fully wheel cut decor with branches, leaves and petals of Virginia creeper at night. Base with signature and date on an elaborately wheel carved blossoming branch in high relief: Emile Galle fecit 1894 (needle engraving).

Duncan/de Bartha, *Glass by Gallé*, London 1984, p. 125, No. 192 (with silver mounting);

cf. Exh. cat. *Émile Gallé et le Verre, la Collection du Musée de l'École de Nancy*, Paris 2004, no. 225; cf. Hilschenz-Mlynek/Ricke, *Glass collection Hentrich*, Kunstmuseum Düsseldorf, Munich 1985, no 202 (décor) no. 269 (shape).

€ 6.000 - 7.000



119

Emile Gallé, Nancy

Decanter with stopper 'Raisins', 1895

H. 42 cm. Cased glass, colorless and amber. Burst precious metal foil enclosed between the layers. Etched decor with grapes. Sign.: GALLE (japonized, raised). Engraved under the lip and on the stopper: 5.

Stopper with small repairs.

Cf. exh. cat. Émile Gallé et le Verre, la Collection du Musée de l'Ecole de Nancy, Paris 2004, No. 184.

€ 8.000 - 12.000



120

120
Emile Gallé, Nancy
Vase, c. 1895

H. 32 cm. Thick-walled, colorless glass, cut. Stylized floral decor. Bottom signed: Cristallerie d'E. Gallé Nancy (deepened). Cf. exh. cat. Émile Gallé et le Verre, la Collection du Musée de l'Ecole de Nancy, Paris 2004, No. 201.
€ 1.800 - 2.400

121
Emile Gallé, Nancy
'Pavots' vase with silver mounting by Georges Falkenberg, c. 1895

H. 21 cm. Cased glass, clear and purple. Multiply etched pattern, poppy at night. Signed: Cristallerie d'E. Galle Nancy, Modele et decor depose (needle etching). Silver mounting, part gilded, by Georges Falkenberg. Stamped: Minerva's head, G. FALKENBERG, faint maker's mark.
 Image online.
€ 700 - 900

122
Emile Gallé, Nancy
Vase 'Mûres', c. 1895

H. 19 cm. Cased glass, colorless, milk white and amber with oxide inclusions. Etched decor with blackberries. Fire polished. Signed in a leaf on the wall: GALLE (etched). Cf. exh. cat. Émile Gallé et le Verre, la Collection du Musée de l'Ecole de Nancy, Paris 2004, No. 186.
€ 2.000 - 3.000

123
Emile Gallé, Nancy
Vase 'Pavots', c. 1895

H. 19.5 cm. Cased glass, colorless and violet. Etched decor with poppies in a nocturnal mood. Fire polished. Bottom signed: Gallé déposé (needle etching).
€ 900 - 1.200



122



123

124

Emile Gallé, Nancy
Vase 'Dahlias', c. 1895

H. 34.5 cm. Smoke brown glass. Etched, enameled and gilded. Decor in an autumnal mood with blooming dahlias against a rough background. Wall signed: Gallé (ornamental, raised).

Cf. cat. Jugendstil, Landesmuseum Mainz, Mainz 1990, No. 94, also featuring in: Exh. cat. Nancy 1900, Munich Municipal Museum, Mainz 1980, No. 285 (not depicted).

€ 2.200 - 3.200

125

Emile Gallé, Nancy
Vase 'Lotus' with silver mounting, 1897

H. 18.5 cm. Cased glass, colorless, opal white and burgundy. Etched decor. Motif with lotus flowers. Fire polished. Floor also decorated. Sign.: Gallé (etched), on the bottom: déposé, Ges. Gesch. (needle engraving).

Cf. Hilschenz-Mlynek/Ricke, Hentrich glass collection, Kunstmuseum Düsseldorf, Munich 1985, no. 233, from the 'Etrennes' series.

€ 2.500 - 3.500





126

Emile Galle

Marquetry vase with handles 'Colchiques', 1897-98

H. 8.5 cm, 17 x 9 cm. Cased glass, milky opalescent and colorless, partially amber and violet with threads, twisted in the manner of lancet-shaped leaves, fine air bubble inclusions covering the entire surface, so-called 'patinage'. On the front purple and amber marqueterie de verre with two autumn crocus flowers with yellow stamens. Signed in the lower wall area: Gallé (engraved).

Cf. Exh. cat. Émile Gallé et le verre, la Collection du Musée de l'École de Nancy, Paris 2004, No. 222; cf. Duncan/de Bartha, Glass by Gallé, London 1984, No. 138.

€ 3.500 - 4.500



127

Emile Gallé, Nancy
'Tournesol' carafe, 1898

H. 28.6 cm. Cased glass, colorless and dark amber.
Decor etched in several steps, motif with a sun flower, a large flower backed with gold foil and decorated with a green cabochon. Bottom signed: Gallé déposé (needle etching in a stylized flower).

In 1898, patent protection was applied for in Nancy for the decor with attached cabochons and a rising sun.
Reproduction of the drawing: Hilschütz-Mlynek/Ricke, Hentrich glass collection, Kunstmuseum Düsseldorf, Munich 1985, no. 238 (a version in the Bröhan Museum, Berlin, vol. II, 1, no. 18). The present carafe has the same signature as the Hentrich collection, no. 238.

€ 2.000 - 3.000



128

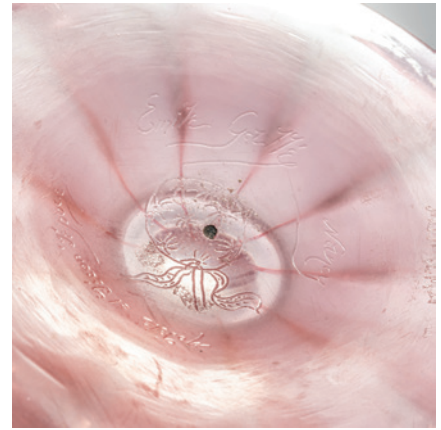
Emile Gallé, Nancy

Vase 'Pissenlit', 1898

In the shape of a dandelion on twisted shaft with entasis. H. 19.1 cm. Clear glass, matted in so called 'Patine' in the shape of dandelions, heightened with needle etching, iridescent. Shaft and foot pink, matted. Bottom signed: Emile Gallé Nancy, modèle et décor déposés with dandelion (needle etching).

Cappa, Europe of Glass Art, Liège 1991, p. 197, No. 347 b (dated here 1894-1900); for the 'Patine'-technique cf. exh. cat. Émile Gallé et le Verre, la Collection du Musée de l'Ecole de Nancy, Paris 2004, p. 34: Both color and material, the decorative process which Gallé patented on August 12, 1898 and which he called 'patina' corresponds to the exploitation of a phenomenon usually considered by glassmakers as an intolerable manufacturing defect.

€ 2.000 - 2.500



129

Emile Gallé, Nancy
Marquetry Vase 'Orchids', 1900

Baluster. H. 16.5 cm. Cased glass, colorless, milk white, light amber, partially violet and lemon yellow marquetry with raspberry red inclusions. Etched decor, reworked with the wheel, motif with orchid panicles. Signed: Gallé (cut).

Cf. Duncan/de Bartha, *Glass by Gallé*, London 1984, No. 153; cf. exh. cat. *Emile Gallé et le verre, la collection du Musée de l'Ecole de Nancy*, Nancy 2004, No. 261.

€ 8.000 - 12.000





130

130

**Emile Gallé, Nancy
Tall vase 'Lotus', 1897**

H. 57 cm. Cased glass, colorless, smoke brown and red, optically ribbed. Etched decor with lotus flowers. Rire polished. Bottom signed: Gallé déposé in a flower (needle etching).

Cf. Hilschenz-Mlynek/Ricke, Hentrich glass collection, Kunstmuseum Düsseldorf, Munich 1985, no. 233, from the 'Etrennes' series.

€ 3.500 - 4.500

131

**Emile Gallé, Nancy
Vase 'Pavots', c. 1898**

H. 33.5 cm. Cased glass, colorless, opal white and orange. Etched motif with poppies. Fire polished. Signed: Gallé (raised). Image online.

€ 900 - 1.200

132

**Emile Gallé
'Etude'-Vase, 1900**

H. 15.5 cm. Cased glass, colorless, opal white, partially green and amber with fused brownish powders; colorless, foil-backed application and leaves at the lip partially reworked with the wheel, matted. Signed: Gallé Etude (needle engraving).

Cracks.

Exh. cat. Emile Gallé et le verre, la collection du Musée de l'Ecole de Nancy, Nancy 2004, No. 246.

€ 2.200 - 2.800

133

Emile Gallé, Nancy
'Etude'-Marquetry bowl with silver mounting,
Etude, c. 1900

H. 9.6 cm. Cased glass, colorless, warped amber and violet inclusions, fine inclusions of air bubbles (patinage), multicolored marquetry, motif with flowers. Bottom signed: Gallé Etude (needle etching). Silver mounting with lily blossoms, stamped: Minerva head.

Cracked imperfection, restored spot.

Cf. Hilschenz-Mlynek/Ricke, Glass collection Hentrich, Kunstmuseum Düsseldorf, Munich 1985, No. 271.

€ 2.000 - 3.000

134

Emile Gallé
'Etude' vase, c. 1900

H. 13 cm. Cased glass, colorless and violet, lily blossoms executed in deep and high cut. Signed: Gallé Etude (engraved).

€ 1.600 - 1.800



132



133



134



135

Emile Gallé

Vase 'Cyclamen', c. 1900

H. 17.5 cm. Cased glass, colorless, opalescent yellow and violet; Elaborately cut decor with blooming cyclamen, finely nuanced surface in front of a martelé-cut background. Signed: Gallé (engraved).

Cf. Cappa, L'Europe de l'Art verrier, Liège 1991, No. 351.

€ 7.000 - 8.000



136

**Emile Gallé
Vase 'Cattleya', c. 1900**

H. 17 cm. Cased glass, colorless, violet and orange-brown; fused precious metal foil and finely structured bubbles, so-called patinage. Large Cattleya-orchid flower with foliage, cut and elaborately reworked with the wheel. Signed: Gallé (engraved).

Cf. Duncan/de Bartha, Glass by Gallé, London 1984, p. 34, no. 4c, p. 92 (form).

€ 6.000 - 7.000



137
Emile Gallé, Nancy
Arum, c. 1900

Open flower on baluster shaft. H. 33 cm.
 Glass, colorless, opal white and slightly
 greenish, violet in the lower area with poly-
 chrome color and metal oxide inclusions.
 Blossom optically blown. Shaft signed: Gallé
 (needle engraving).

Leaf tip and foot restored. Drilled hole in the
 shaft for a lamp mounting.

Garner, Gallé, Paris 1977, p. 127.

€ 400 - 500

138
Emile Gallé, Nancy
Vase 'Ombelles', 1900-04

H. 36 cm. Cased glass, colorless and green,
 partially distorted in stripes. Cameo and
 intaglio decor, partially rubbed brown
 and enameled white, motif with bloom-
 ing hogweed and fern. Wall signed: Gallé
 (japonized, raised).

Cf. exh. cat. Emile Gallé et le verre, la collec-
 tion du Musée de l'Ecole de Nancy, Nancy
 2004, No. 294 (Decor).

€ 3.500 - 4.000





139

139

**Emile Gallé, Nancy
Vase 'Ombelles', c. 1903**

H. 34.5 cm. Cased glass, colorless, green, brown and opalescent pink. Etched decor with blooming acanthus. Wall signed: Gallé (raised).

€ 1.400 - 1.800

140

**Emile Gallé, Nancy
'Marine' bowl, c. 1904**

In the form of a boat. Squid as a figurehead. H. 7 cm, 10.5 x 4.5 cm. Cased glass, colorless, opal green and amber marbled, greenish and bluish inclusions of oxides and air bubbles. Completely and intricately wheel cut, underwater decor. Signed: Gallé (needle engraving).

Cf. Hilschensch-Mlynek/Ricke, Hentrich glass collection, Kunstmuseum Düsseldorf, Munich 1985, no. 340.

€ 2.400 - 2.800



140

141

**Etablissements Gallé, Nancy
Cachepot 'Roses', 1905-08**

H. 12.8 cm. Cased glass, opalescent amber, colorless and red. Etched decor with blooming rose bushes in an evening mood. Signed: Gallé with star (raised).

€ 1.800 - 2.600



141



142

142

Etablissements Gallé, Nancy
Vase 'Nénuphars et libellule', 1905-
08

H. 20.7 cm. Cased glass, colorless, milk white and amber brown. Etched decor with water lily pond with large flying dragonfly. Signed: Gallé (raised with asterisk).

Hilschenz-Mlynek/Ricke, Hentrich glass collection, Kunstmuseum Düsseldorf, Munich 1985, no. 341 (decor).

€ 3.000 - 4.000

143

Etablissements Gallé, Nancy
'Geranium' Vase, 1908-20

H. 16.5 cm. Cased glass, colorless, blue, pink and moss green. Etched decor with geranium flowers and leaves. Reworked with the wheel. Signed: Gallé (raised).

€ 1.500 - 1.800



143

144

Etablissements Gallé, Nancy
'Nénuphars et Libellule' box and
cover, 1908-20

H. 6 cm, 13 x 12 cm. Cased glass, colorless, yellow and violet. Etched decor with an evening pond landscape with water lilies and a large dragonfly. Signed: Gallé (raised). In base and lid: 2 (engraved).

€ 2.500 - 2.800



145

145
Etablissements Gallé, Nancy
Vase 'Chêne lorrain et capricorne', 1908-20

H. 36.3 cm. Cased glass, colorless and dark brown, flaky yellowish powder inclusions. Etched decor with oak branches in an evening mood, large stag beetle. Signed: Gallé (raised).
 The popular decor was created around 1900 and counted among the 'Vases de tristesse', cf. Hilschenz-Mlynek/Ricke, Hentrich Glass Collection, Kunstmuseum Düsseldorf, Munich 1985, No. 290.

€ 4.000 - 5.000



146
Etablissements Gallé, Nancy
Vase 'Glycines', 1908-20

H. 32.2 cm. Cased glass, colorless, white, pink and violet. Etched decor with wisteria tendrils. Signed: Gallé (raised).

€ 1.000 - 1.400

147
Etablissements Gallé, Nancy
Vase 'Glycines', 1908-20

H. 19.1 cm. Cased glass, colorless, pink and violet. Etched decor with wisteria tendrils. Signed: Gallé (raised).

Image online.

€ 400 - 500



146



148

Etablissements Gallé, Nancy
Table light 'Libellules, Nénuphars, Sagittaires',
1908-20

H. 63 cm. Cased glass, colorless, green, blue and violet.
Etched decor with a pond landscape with blooming water
lilies and arrowhead, three whirring dragonflies on the screen.
Base and shade signed: Gallé (raised). Bronze mounting.
Small chip to the foot, covered by the bronze mounting.

€ 7.000 - 9.000

149

Etablissements Gallé, Nancy
Vase 'Clématites', 1908-20

H. 32 cm. Cased glass, colorless, violet and milk pink. Etched decor with clematis tendrils. Signed: Gallé (raised).

€ 1.600 - 2.000

150

Etablissements Gallé, Nancy
Vase 'Glycines', 1908-20

H. 18.5 cm. Cased glass, colorless, pink and violet. Etched decor with wisteria tendrils. Signed: Gallé (raised).

€ 900 - 1.200

151

Etablissements Gallé, Nancy
Soliflor 'Paysage alpin', 1908-20

H. 16.3 cm. Cased glass, colorless, green and brown. Etched landscape decor. Signed: Gallé (raised).

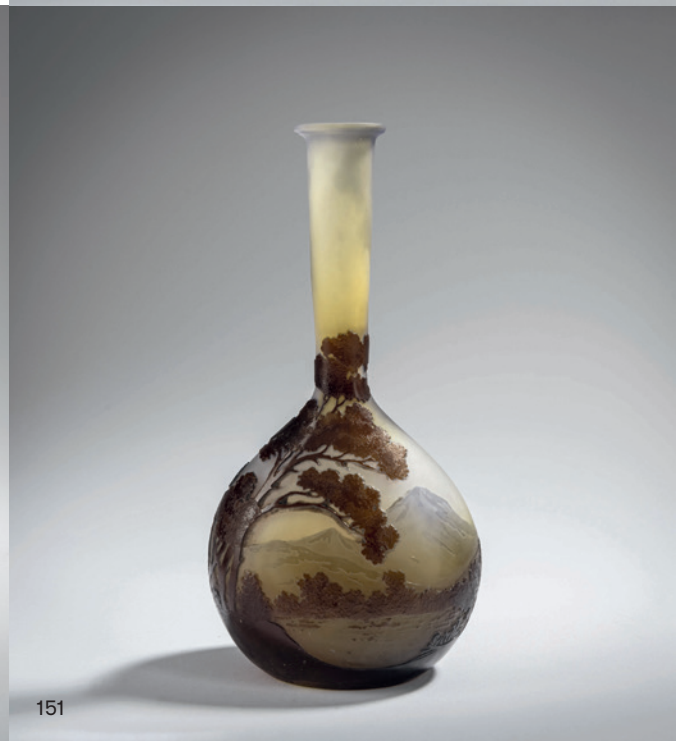
€ 1.200 - 1.400



149



150



151

152

Etablissements Gallé, Nancy

Tall vase 'Le Lac de Côme le soir', 1920-36

H. 35.5 cm. Cased glass, dark amber, blue, clear, violet and brown.
Etched decor, landscape on Lake Como. Circumferential balustrade on the tree-lined shore, a peacock, island with ruins on the back, particularly atmospheric depiction in the strongly changing light of the setting sun. Signed: Gallé (raised).

Duncan/de Bartha, Glass by Gallé, London 1984, no. 304.

€ 9.000 - 12.000



153

Etablissements Gallé, Nancy
Vase 'La Ligne bleue des Vosges', 1914-20

H. 35.5 cm. Cased glass, colorless, yellow, blue and violet. Etched decor with a Vosges landscape with a lake in an evening mood.
Signed: Gallé (raised).

€ 3.600 - 4.500

154

Etablissements Gallé, Nancy
Soliflor 'Buddleia et Sauterelle', 1920-24

H. 21.5 cm. Cased glass, colorless, milk white, yellow and violet. Etched decor with summer lilac, grasshopper and butterfly.
Signed: Gallé (raised).

€ 900 - 1.200

155

Etablissements Gallé, Nancy
Bowl 'Bouton d'Or', 1920-36

H. 10 cm, Ø 21.5 cm. Cased glass, light amber, opalescent, colorless and burgundy. Etched decor with buttercups in an evening mood. Signed: Gallé (raised).

€ 1.800 - 2.600



153



154



155



156

Etablissements Gallé, Nancy
Table light 'Marguerite', 1920-36

H. 43.5 cm, Ø 20.5 cm. Cased glass, colorless, yellow, blue and violet. Etched decor with daisies. Signed: Gallé (raised). Bronze mounting.

€ 8.000 - 12.000

157

Etablissements Gallé, Nancy
Vase 'Paysage lacustre', 1920-36

Two-sided flattened oval with constricted neck on cylinder base. H. 33 cm. Cased glass, colorless, milk bluish, amber brown and dark brown. Etched decor with nocturnal lake landscape. Signed: Gallé (raised).

€ 3.800 - 4.800

158

Etablissements Gallé, Nancy
'Cognassier du Japon' vase, 1920-36

H. 13 cm. Cased glass, colorless, yellow and red. Etched decoration with flowering branches of the Japanese ornamental quince (Chaenomeles). Wall signed: Gallé (raised).

€ 800 - 900

159

Etablissements Gallé, Nancy
Vase 'Tulipes', 1925-36

Baluster. H. 24.2 cm. Cased glass, colorless, amber yellow and wine red. Etched decor, motif with blooming tulips in an evening mood. Signed: Gallé (raised).

€ 1.800 - 2.600



157



158



159



160

160

**Etablissements Gallé, Nancy
Table light 'Clematis', 1925-36**

H. 53 cm. Cased glass, colorless, opalescent yellow, blue and violet. Etched decor with flowering clematis tendrils. Base and shade signed: Gallé (raised).
€ 8.000 - 9.000

161

**Etablissements Gallé, Nancy
Cachepot 'Paysage, voiliers', 1925-36**

H. 14 cm, Ø 18.5 cm. Cased glass, colorless, bluish, amber brown and dark brown. Etched decor with seascape, sailing boats in an evening mood. Signed: Gallé (etched).
€ 3.000 - 4.000



161

162

Etablissements Gallé, Nancy
Vase 'Clématites', 1925-36

H. 32.4 cm. Cased glass, light amber opalescent, colorless, violet and blue. Etched decor with tendrils of clematis in an evening mood. Signed: Gallé (raised).

€ 2.000 - 2.400

163

Etablissements Gallé, Nancy
Vase 'Cognassier du Japon', 1925-36

H. 25 cm. Cased glass, colorless, yellow and red. Etched decoration with flowering branches of the Japanese ornamental quince (Chaenomeles). Wall signed: Gallé (raised).

€ 1.800 - 2.400

164

Etablissements Gallé, Nancy
Vase 'Cognassier du Japon', 1925-36

H. 30.5 cm. Cased glass, colorless, opalescent yellow and red. Etched decor with flowering branches of the Japanese ornamental quince (Chaenomeles). Wall signed: Gallé (raised).

€ 1.800 - 2.400



162



163



164

165

René Lalique

Comb dish from the 'Epines' set, 1920

H. 3 cm, 23.3 x 8 cm. Made by René Lalique, Wingen-sur-Moder, before 1947. Colorless pressed glass, partially satined. Signed: R. LALIQUE (raised).

Marcilhac, René Lalique, Paris 2011, No. 598.

Image online.

€ 250 - 350

166

René Lalique

Soap dish from the 'Epines' set, 1920

H. 3 cm, 11.5 x 8 cm. Made by René Lalique, Wingen-sur-Moder, before 1926. Colorless pressed glass, partially satined. Signed: R. Lalique (engraved).

Marcilhac, René Lalique, Paris 2011, No. 599.

Image online.

€ 150 - 200

167

René Lalique

Pendant 'Colombes', 1920

H. 4 cm. Made by Lalique, Combs-la-Ville or Wingen-sur-Moder, before 1947. Molded amber glass, satin finish, textile cord. Signed: R. Lalique (engraved).

Marcilhac, René Lalique, Paris 2011, No. 1659.

Image online.

€ 500 - 700

168

René Lalique

Brûle parfum 'Raisins' for Robj, Paris, 1921

H. 13 cm. Colorless mold-blown glass, satin finish. Marked: ROBJ PARIS (embossed).

Lidless.

Marcilhac, René Lalique, Paris 2011, No. 2603.

€ 800 - 1.000

169

René Lalique

'Poissons' vase, 1921

H. 23.5 cm. Made by René Lalique, Wingen-sur-Moder, before 1937. Mold-blown glass, colorless and opalescent. Signed: R. LALIQUE (recessed).

Marcilhac, René Lalique, Paris 2011, No. 925.

€ 5.000 - 6.000



169



170

René Lalique
'Chiens N° 1' bowl, 1921

Ø 24 cm. Made by René Lalique, Combs-la-Ville or Wingens-sur-Moder. Colorless molded glass, partially satined, blue patina. Signed: R. LALIQUE (raised).

Image online.

€ 600 - 800

171

René Lalique
Vase 'Acacia', 1921

H. 20.3 cm. Made by Lalique, Wingens-sur-Moder, before 1947. Clear mold-blown glass, satined, blue-green patina. Signed: R. Lalique France N° 949 (engraved).

€ 800 - 1.200

172

René Lalique
Bottle 'Fée' or 'Ganika' for D'Orsay, 1923

H. 8.2 cm. Made by Lalique, Wingens-sur-Moder, before 1947. Colorless mold-blown glass, gray patina. Signed: RL (raised).

Image online.

€ 500 - 700

173

René Lalique
Vase 'Dahlias', 1923

H. 12.3 cm. Made by René Lalique, Wingens-sur-Moder. Colorless, mold-blown glass, satined, blue patina, partially enameled black. Signed: R. LALIQUE FRANCE (sandblasted).

Marcilhac, René Lalique, Paris 2011, No. 938.

€ 1.500 - 2.000

174

Rene Lalique
Bowl 'Lys', 1924

H. 12.5 cm, Ø 23.6 cm. Made by Lalique, Wingens-sur-Moder, before 1947. Colorless mold-blown glass, opalescent, satined. Signed: R. LALIQUE (raised); R. LALIQUE FRANCE (engraved).

Image online.

€ 700 - 900

175

René Lalique
Vase 'Huit Perruches' or 'Ceylan', 1924

H. 23.8 cm. Made by René Lalique, Wingens-sur-Moder. Colorless molded glass, opalescent, matted. Signed: R. LALIQUE FRANCE (engraved).

Marcilhac, René Lalique, Paris 2011, No. 905.

€ 4.200 - 5.200





176

176

**René Lalique
'Tourbillons' Vase, 1925**

H. 19.7 cm. Made by René Lalique, Wingen-sur-Moder, 1928-32. Colorless pressed glass, surrounded with spirally, strictly stylized branch motifs in relief plastic. Signed: R. LALIQUE FRANCE, no. 973 (engraved).
Marcilhac, René Lalique, Paris 2011, No. 973.
€ 4.000 - 5.000

177

**René Lalique
Vase 'Domrémy' or 'Chardons',
1926**

H. 21.1 cm. Made by Lalique, Wingen-sur-Moder, before 1947. Clear mold-blown glass, opalescent, satined with partially gray patina. Signed: R. Lalique France (engraved).
Marcilhac, René Lalique, Paris 2011, No. 979.
€ 1.600 - 2.000

178

**René Lalique
Vase 'Bacchantes', 1927**

H. 24.8 cm. Made by René Lalique, Wingen-sur-Moder, before 1947. Colorless pressed glass, brown patina.
Signature added.
Marcilhac, René Lalique, Paris 2011, No. 997.
€ 3.000 - 4.000

179

**René Lalique
'Malesherbes' Vase, 1927**

H. 23 cm. Made by René Lalique, Wingen-sur-Moder, 1928-32. Mold-blown glass, colorless and opalescent. Signed: R. Lalique France, no. 1014 (engraved).
Marcilhac, René Lalique, Paris 2011, No. 1014.
€ 1.500 - 2.000

180

**René Lalique
Jardiniere 'Acanthes', 1927**

H. 13 cm, 45 x 14.5 cm. Made by René Lalique, Wingen-sur-Moder, before 1947. Colorless pressed glass, satin finish. Signed: R. LALIQUE FRANCE (sandblasted).
Marcilhac, René Lalique, Paris 2011, No. 3460.
€ 1.000 - 2.000



177



178



179



180

181

René Lalique
Vase 'Rampillon', 1927

H. 12.7 cm. Made by Lalique, Wingen-sur-Moder, before 1947. Colorless mold-blown glass, opalescent, blue-green patina. Signed: R. LALIQUE FRANCE (engraved). Marcilhac, René Lalique, Paris 2011, No. 991. € 1.200 - 1.600

182

René Lalique
2 bowls 'Véronique' and 'Primévères', 1927-1928

Ø 16 cm. Made by René Lalique, Wingen-sur-Moder. Colorless molded glass, opalescent, partially satined. Signed: R. LALIQUE (embossed) FRANCE (engraved). Ø 22 cm. Execution: René Lalique, Wingen-sur-Moder. Colorless molded glass, opalescent. Signed: R. LALIQUE FRANCE (raised). Marcilhac, René Lalique, Paris 1989, no. 397; no. 77 (here box). Image online. € 500 - 700

183

René Lalique
'Vernon' bowl, 1928

H. 5.3 cm, Ø 21.8 cm. Made by René Lalique, Wingen-sur-Moder. Colorless molded glass, opalescent. Signed: R. LALIQUE FRANCE (raised). Marcilhac, René Lalique, Paris 2011, No. 296. Image online. € 400 - 600

184

Rene Lalique, Marc Lalique
Collection of seven objects, 1928-61, 1980s

Vase 'Elisabeth', 1961. H. 13 cm. Colorless crystal glass, partially satined. Signed: Lalique France. Ashtray 'Remy Martin', 1955. H. 11 cm. Colorless molded glass, partially satined. Statuette 'Floréal', 1928. H. 8.2 cm. Colorless crystal glass, partially satined, opalescent. Signed: Lalique ® France (engraved). Bottle 'Moulin Rouge', 1945. H. 17 cm. Colorless crystal glass, partially satined. Signed: Lalique France (engraved). Ashtray, candlestick and table lighter 'Tête de Lion'. Ø 14.5 cm; H. 10-11 cm. Colorless crystal glass, partially satined, one brass insert, one lighter insert. Signed: Lalique France; once: Lalique ® France (engraved). Image online. € 600 - 800

185

Rene Lalique
Seven-piece glass service 'Roshheim', 1929

Carafe, 1 liqueur glass, 5 madeira glasses. H. 9.5-24 cm. Made by René Lalique, Wingen-sur-Moder. Colorless mold-blown glass and pressed glass, partially satined. Signed: R.LALIQUE; R.LALIQUE FRANCE (sandblasted). Marcilhac, René Lalique, Paris 2011, Nos. 5193, 5196 and 5198. € 1.000 - 1.500 (Standard Taxation)



186

René Lalique
'Sanglier' paperweight, 1929

H. 6.5 cm. Made by René Lalique, Wingen-sur-Moder. Dark tinted pressed glass, partially satined. Signed: R. LALIQUE FRANCE (sandblasted).

Marcilhac, René Lalique, Paris 2011, No. 1157.

€ 900 - 1.200

187

René Lalique
'Figurines et Voiles' jar, 1929

H. 7 cm, Ø 10.5 cm. Made by René Lalique, Wingen-sur-Moder. Colorless molded glass, satined, blue patina. Signed: R. LALIQUE, MADE IN FRANCE (raised).

Marcilhac, René Lalique, Paris 2011, No. 97.

€ 1.000 - 1.500

188

René Lalique
'Perche' hood mascot/paperweight, 1929

H. 9.8 cm, L. 16 cm. Made by Lalique, Wingen-sur-Moder, before 1947. Colorless molded glass, satined, green patina. Signed: R. LALIQUE (raised); Lalique France (engraved).

Marcilhac, René Lalique, Paris 2011, No. 1158.

Image online.

€ 400 - 500

189

Rene Lalique
'Nemours' bowl, 1929

Ø 25.5 cm. Made by Lalique, Wingen-sur-Moder, after 1947. Colorless molded glass, partially matted, black enamel. Signed: Lalique France (engraved).

Marcilhac, René Lalique, Paris 2011, No. 404.

Image online.

€ 400 - 600

190

René Lalique
Vase 'Bornéo', 1930

H. 24 cm. Made by René Lalique, Wingen-sur-Moder, before 1947. Colorless pressed glass, opalescent, partially satined. Signed: R. LALIQUE FRANCE (sandblasted).

Marcilhac, René Lalique, Paris 2011, No. 1056.

€ 2.000 - 3.000

191

René Lalique
'Piriac' vase, 1930

H. 18.3 cm. Made by René Lalique, Wingen-sur-Moder. Colorless molded glass, opalescent, partially satined. Signed: R. LALIQUE FRANCE (engraved).

Marcilhac, René Lalique, Paris 2011, no. 1043.

€ 1.200 - 1.400



190



191



195

193

René Lalique

Paperweight 'Bison', 1931

H. 9.2 cm. Made by Lalique, Wingen-sur-Moder. Colorless molded glass, partially satined. Signed: LALIQUE FRANCE (sandblasted).

Image online.

€ 300 - 400

194

René Lalique

Toilettry set, 1931-1942

3 pieces. Lidded box 'Enfants', Flacon 'Dahlia' N°2, Lidded box 'Cactus'. H. 5.2-17.5 cm. Made by Lalique, Wingen-sur-Moder, after 1947. Colorless molded glass and mold-blown glass, partially satined and enameled black. Each signed: LALIQUE FRANCE (sandblasted).

Image online.

€ 400 - 600

192

Rene Lalique

'Enfants' flacon, 1931

H. 9.8 cm. Made by: Lalique, Wingen-sur-Moder, after 1947. Colorless pressed glass, partially satined. Signed: Lalique France (engraved).

In addition: second bottle without lid.

Marcilhac, René Lalique, Paris 2011, No. 609.

Image online.

€ 400 - 500

195

René Lalique

'Bacchus' vase, 1938

H. 17.8 cm. Made by René Lalique, Wingen-sur-Moder. Colorless molded glass, satined, blue patina. Signed: R. LALIQUE FRANCE (sandblasted).

Marcilhac, René Lalique, Paris 2011, no. 10-922.

€ 1.400 - 1.800



199

196

René Lalique
2 bowls (coupe plate) 'Actinia', 1933

Ø 27.5 cm. Made by René Lalique, Wingen-sur-Moder: Colorless molded glass, opalescent. Signed R. LALIQUE FRANCE (sandblasted).

Marcilhac, René Lalique, Paris 2011, No. 10-391.

Image online.

€ 700 - 800

197

René Lalique
Figure (Sujet religieux) 'Vierge à l'enfant', 1934

H. 34 cm. Made by Lalique, Wingen-sur-Moder, before 1947. Colorless molded glass, partially satined. Signed: R. LALIQUE FRANCE (sandblasted).

Beveled on the front.

Marcilhac, René Lalique, Paris 2011, No. 1217.

Image online.

€ 450 - 650

198

René Lalique
Ashtray 'Chèvre', 1936

H. 8.5 x 13 x 11.2 cm. Made by René Lalique, Wingen-sur-Moder. Colorless molded glass, partially satined. Signed: R. LALIQUE FRANCE (sandblasted).

Marcilhac, René Lalique, Paris 2011, No. 333.

Image online.

€ 400 - 600

199

René Lalique
Vase 'Jaffa', 1937

H. 19.7 cm. Made by René Lalique, Wingen-sur-Moder, before 1947. Colorless pressed glass, satined and polished. Signed: R. LALIQUE FRANCE (sandblasted).

Marcilhac, René Lalique, Paris 2011, No. 10-906.

€ 4.000 - 5.000

200

René Lalique
'Dauphins' Vase, 1932

H. 13.7 cm. Made by Lalique, Wingen-sur-Moder, before 1947. Colorless molded glass, opalescent, partially satined. Marked: R. LALIQUE FRANCE (sandblasted).

Marcilhac, René Lalique, Paris 2011, No. 10-900.

€ 2.500 - 3.500



200

201

René Lalique
Decorative plate 'Côte d'or', 1943

Ø 40 cm. Made by René Lalique, Wingen-sur-Moder, before 1947. Colorless pressed glass, decorated in relief with dancing naked women and grapes, satin finish, brown patina. Signed: R. LALIQUE FRANCE (sandblasted).

Marcilhac, René Lalique, Paris 2011, No. 10-406.

€ 2.500 - 3.500



201

202

René Lalique

Two 'Aurillac' candlesticks, 1944

H. 8 cm, L. 23 cm. Made by Lalique, Wingen-sur-Moder, after 1947. Colorless molded glass, partially satined. Signed: LALIQUE FRANCE (sandblasted).

Marcilhac, René Lalique, Paris 2011, No. 2132.

Image online.

€ 300 - 500

203

René Lalique

Paperweight/bookend 'Tête de Coq', 1928

H. 17 cm (without base). Made by Lalique, Wingen-sur-Moder, after 1947. Colorless crystal glass. Signed: LALIQUE FRANCE (embossed). With wooden base.

Marcilhac, René Lalique, Paris 2011, No. 1137.

Image online.

€ 500 - 700

204

René Lalique

'Vichy' vase, 1937

H. 17 cm. Made by Lalique, Wingen-sur-Moder, after 1947. Colorless crystal glass, partially satined, blue patina. Signed: LALIQUE FRANCE (sandblasted).

Marcilhac, René Lalique, Paris 2011, No. 10-909.

€ 900 - 1.200

205

René Lalique

'Festons' centerpiece, 1939

Six pieces. H. 4.8 cm, L. 50 cm. Made by Lalique, Wingen-sur-Moder, after 1947. Colorless crystal glass, partially satined. Signed: LALIQUE FRANCE (sandblasted); Lalique France (engraved).

Marcilhac, René Lalique, Paris 2011, No. 10-3472/A-10-3472/B.

Image online.

€ 400 - 600



204

206

Lalique, Wingen-sur-Moder

Large centerpiece 'Antilles', 1968

H. 29.8 cm. Colorless crystal glass, satined. Signed: Lalique France (engraved).

€ 800 - 1.200

207

Lalique, Wingen-sur-Moder

Figure 'Deux Danseuses', 1980s

H. 25.5 cm. Colorless crystal glass, partially satined. Marked: Lalique® France (engraved).

Image online.

€ 400 - 500



206

208

208

Lalique Perfumes, Paris
Large bottle 'Lalique - Eau de Parfum', 1992

Anniversary edition with 600 ml. H. 26 cm. Colorless crystal glass, satined. Signed: Lalique ® France, B 0184. (engraved), manufacturer's label.

Flacon unopened, in original packaging.

€ 1.500 - 2.500

209

Lalique, Wingen-sur-Moder
'Lanterne' vase, 1990s

H. 11 cm. Yellow crystal glass. Signed: Lalique ® France (engraved), manufacturer's label.

Image online.

€ 300 - 400

210

Lalique, Wingen-sur-Moder
'Basilic' bowl/lantern, 2000s

H. 7.5 cm. Blue tinted crystal glass, partially satinated. Marked: Lalique ® France (engraved).

Image online.

€ 250 - 350

211

Legras & Cie., Saint-Denis
Vase 'Violettes', um 1900

H. 26 cm. Colorless glass, surrounding decor with violet blossoms, enameled blue, white, green and yellow and heightened with gold against a rough background, gold-plated rocailles above the stand, gold-rubbed lip. Signed: Bishop bust Montjoye L & Cie (gold stamp).

€ 600 - 800

212

Legras & Cie., Saint-Denis
Vase 'Coeur de Jeannette', c. 1900

From the 'Arabisant' series. H. 35 cm. Cased glass, oval powder inclusions, colorless and opal white, yellow, orange and violet crumbs, satin finish. Polychrome enameled decor with bleeding hearts and arabesques. Signed: Legras (gold signature).

Michel/Vitrat, François-Théodore Legras, Montreuil 2012, p. 269, No. 0742.

€ 1.000 - 2.000

213

Legras & Cie., Saint-Denis
Vase 'Vigne', 1920s

H. 39 cm. Cased glass, clear, with white powder inclusions, matted. Enameled decor with grapes and vine leaves. Signed: Legras (enameled).

Image online.

€ 300 - 400



211



212



214
Muller Frères, Lunéville
Cachepot 'Paysage', 1920-25

H. 21.5 cm, Ø 22 cm. Cased glass, colorless, with yellow powder inclusions and violet. Etched decor with tree-lined lake landscape. Signed: MULLER FRES LUNEVILLE (raised).

€ 1.500 - 2.000

215
Muller Frères, Lunéville
'Le Moulin' vase, c. 1925

H. 31.3 cm. Cased glass, colorless, lemon yellow and reddish brown. Etched decor with an evening landscape with a windmill. Signed: MULLER FRES LUNEVILLE (raised).

Tallot, Les Frères Muller, Metz 2010, p. 111.

€ 800 - 900

216
Muller Frères, Lunéville
Vase 'Moineaux', c. 1928

H. 20.3 cm. Cased glass, colorless, seal red and dark violet. Etched decor with two sparrows in the branches. Signed: MULLER FRES LUNEVILLE (raised).

Image online.

€ 700 - 900

217
Henri Muller, Croismare
Vase 'Dahlias', c. 1900

H. 35 cm. Cased glass, colorless, milk white, pink and amber brown. Etched decor with dahlias engraved with the wheel. Bottom signed: HMuller Croismare près Nancy (needle engraving). Imperfection concealed as a leaf on the base.

Cf. Hilschenz-Mlynek/Ricke, Hentrich glass collection, Kunstmuseum Düsseldorf, Munich 1985, no. 459.

€ 1.200 - 1.600



218

Henri Muller, Croismare
Vase 'Tulipes', c. 1900

H. 16.2 cm. Cased glass, colorless and green. Etched decor with tulips, the flowers and leaves reworked with the wheel. Bottom signed: HMuller Croismare (needle etching).

Image online.

€ 500 - 700

219

Henri Muller, Croismare
Vase 'Hibiscus', c. 1900

H. 23.5 cm. Cased glass, milk white, colorless and green. Etched and cut decoration of blossoming twigs of hibiscus, lustrous ground. Base inscribed (added): DAUM NANCY, Cross of Lorraine (engraved).

Engraved leaf below the edge of the lip as a concealment of a manufacturing error.

Image online.

€ 500 - 700

220

Henri Muller, Croismare
Vase 'Pavots', c. 1900

H. 13.2 cm. Cased glass, colorless and violet. Etched decor with poppies, the flowers and leaves reworked with the wheel. Bottom signed: HMuller Croismare près Nancy (needle etching).

Image online.

€ 600 - 800

221

Paul Nicolas, Nancy
Tall vase 'Roses', 1918-25

H. 32.5 cm. Cased glass, amber, clear and red. Etched decor with wild roses in an evening mood. Signed: d'Argental, Cross of Lorraine (raised).

€ 1.800 - 2.600



221

222

Paul Nicolas, Nancy
Cachepot, 1918-25

H. 17 cm, 36 x 21.5 cm. Cased glass, colorless, amber brown and dark brown. Etched decor. Landscape depictions in reserves. Signed: d'Argental (raised).

€ 2.800 - 3.800



222

223

Victor Saglier, Paris
Jar 'Vigne' with silver mounting, c. 1900

H. 17.7 cm. Made by Verrerie d'Art de Lorraine, Burgun, Schverer & Co., Meisenthal. Cased glass, colorless, opalescent and green. Etched decor with vine tendrils. Signed above the stand: Lorraine with Cross of Lorraine (etched). Back: VS with sailing ship (etched stamp). Silver plated mounting.

Image online.

€ 700 - 900

224

Marius-Ernest Sabino
Vase 'Licenz', c. 1925

H. 15 cm. Opaque black glass with green patina. Circumferential decor with fish in two rows. Bottom signed: Sabino Paris (engraved).

€ 1.000 - 1.500

225

Marius-Ernest Sabino, Paris
'Oiseaux' ceiling light, c. 1928

H. 84 cm. Colorless pressed glass, frosted, decorated in relief with birds between flowering twigs, martelé-cut background. Bronze mounting, silver plated.

Must be re-electrified.

€ 2.500 - 3.000



225

226

Marius-Ernest Sabino, Paris
Figurative table light, c. 1930

H. 24.5 cm (with base). Molded glass, colorless and opalescent white. Signed: Sabino (needle engraving). Silvered bronze base, electrified.

€ 1.400 - 1.800



224



226

227

**Schneider, Epinay-sur-Seine
2 'Raisins' vases, 1918-20**

H. 33 cm. Cased glass, colorless and orange, pink and violet enamel fusions. Decor etched in several steps. Matted. Signed: Le Verre Français (needle etching).

Joulin/Maier, Charles Schneider, Augsburg 2014, p. 98 (decor).

€ 2.200 - 3.200

228

**Schneider, Epinay-sur-Seine
Jardiniere 'Houx' 1918-21**

H. 10.3 cm, 19.5 x 10 cm. Cased glass, colorless, pink powder inclusions. Enamel fusions in vanilla yellow. Etched decor with holly. Marked: Tricolor thread for Le Verre Français.

Joulin/Maier, Charles Schneider, Augsburg 2020, p. 76.

Image online.

€ 600 - 700

229

**Schneider, Epinay-sur-Seine
'Jades' vase, 1918-24**

H. 18.7 cm. Overlaid glass, clear, powder inclusions, vanilla yellow, orange, white and blue. Signed: Schneider (engraved).

Image online.

€ 150 - 200



227



232

230

**Schneider, Epinay-sur-Seine
Vase 'Jades', 1918-24**

H. 28.5 cm. Cased glass, colorless, powder inclusions in blue, violet and orange. Signed: Schneider (engraved).

Image online.

€ 250 - 350

231

**Schneider, Epinay-sur-Seine
'Jades' vase with handles, 1922-24**

H. 22 cm. Cased glass, colorless, milk white, yellow and violet powder inclusions, matted. Handles purple. Signed: Schneider (sandblasted).

Image online.

€ 500 - 600

232

**Schneider, Epinay-sur-Seine
'Coqueret' ceiling light, 1919-21**

H. 12 (with suspension), Ø 39 cm. Cased glass, colorless, lemon-yellow powder inclusions, enamel fusions, orange and dark green. Etched decor with Cape gooseberries. Signed: Tricolore thread for Le Verre Français. Wrought iron mounting.

Joulin/Maier, Charles Schneider, Augsburg 2020, p. 97; Bertrand, Schneider maître verrier, Dijon 1995, p. 34 f.

€ 1.700 - 2.000

233

**Schneider, Epinay-sur-Seine
'Campanules' jug, 1922-25**

H. 28 cm. Cased glass, colorless, with red and yellow powder inclusions. Dark red-brown enamel fusions. Etched decor with bluebells in an evening mood. Signed: Le Verre Français (needle etching).

Joulin/Maier, Charles Schneider, Augsburg 2020, p. 116.

€ 1.600 - 2.600



233

234

**Schneider, Epinay-sur-Seine
'Coupe à pied noir', 1922-26**

H. 13.4 cm, Ø 25.5 cm. Cased glass, colorless, powder inclusions in orange-red and dark blue. Foot signed: Schneider (sandblasted).

Image online.

€ 500 - 600

235

**Schneider, Epinay-sur-Seine
'Spirales' Vase, 1923-26**

H. 43.5 cm. Cased glass, colorless, yellowish powder inclusions, green enamel in the lower area and red in the upper area. Etched decor with climbing thorn branches with inflorescences. Signed above the stand: Le Verre Français (needle etching).

Joulin/Maier, Charles Schneider, Augsburg 2020, p. 126.

€ 1.800 - 2.600



235

236

**Schneider, Epinay-sur-Seine
'Dahlias' jug, 1923-26**

H. 20 cm. Cased glass, colorless with pink powder inclusions, light and dark violet enamels. Etched decor with dahlias. Foot signed: Le Verre Français (needle etching).

Joulin/Maier, Charles Schneider, Augsburg 2004, p. 118 (decor).

€ 900 - 1.200

237

**Schneider, Epinay-sur-Seine
Vase 'Fuchsias', 1924-27**

H. 31.7 cm. Cased glass, colorless, milky yellowish and turquoise blue powder inclusions, red and deep blue enamel fusions. Etched decor with blooming fuchsias. Signed on the foot: Le Verre Français (needle etching).

Cf. Joulin/Maier, Charles Schneider, Augsburg 2004, p. 125 (decor).

€ 900 - 1.200



236

237



238

238

**Schneider, Epinay-sur-Seine
Vase 'Lauriers', 1924-27**

H. 21.2 cm. Cased glass, colorless, milk white and orange powder inclusions, violet enamel fusions. Etched decoration with laurel leaves. Signed: Le Verre Français (needle etching).

Joulin/Maier, Charles Schneider, Munich 2020, p. 163 (decor).

€ 1.400 - 1.800

239

**Schneider, Epinay-sur-Seine
'Perlières' jug, 1924-27**

H. 37.3 cm. Cased glass, colorless with yellow and reddish powder inclusions, violet enamel. Etched decor with berry tendrils. Foot signed: Le Verre Français (needle etching).

Cf. Joulin/Maier, Charles Schneider, Munich 2020, p. 161 (decor).

€ 900 - 1.200

240

**Schneider, Epinay-sur-Seine
Vase 'Yucca', 1925-27**

H. 13.6 cm. Cased glass, milky yellowish powder inclusions, orange enamel in the upper area and brownish enamel in the lower area. Etched decor with motifs of the American palm lily repeated three times. Foot signed: Le Verre Français (needle etching).

€ 900 - 1.200

241

**Schneider, Epinay-sur-Seine
Ceiling light, c. 1925**

H. 80 cm, Ø 50 cm. Cased glass, polychrome powder inclusions, matted. Signed: SCHNEIDER (sandblasted). Blackened wrought iron mounting.

Image online.

€ 600 - 800

242

**Schneider, Epinay-sur-Seine
Vase, c. 1925**

H. 16 cm. Cased glass, colorless, orange and green. Decor warped between layers. Matted. Signed: Schneider (sandblasted and rubbed gold).

€ 1.000 - 1.400



239



240



242



243



244



246



247

243

**Schneider, Epinay-sur-Seine
'Jades' vase with iron mounting, c. 1925**

H. 39.5 cm. Colorless glass, powder inclusions, white, vanilla yellow, orange, pink and raspberry red. Signed: Schneider (sandblasted). Wrought iron mounting.

€ 1.800 - 2.600

244

**Schneider, Epinay-sur-Seine
Vase 'Algues', 1927-28**

H. 16.2 cm. Cased glass, colorless, milk white powder inclusions, orange and green enamel fusions. Etched decor with seaweed. Signed: Le Verre Français (needle etching).

Cf. Joulin/Maier, Charles Schneider, Munich 2020, p. 204.

€ 900 - 1.200

245

**Schneider, Epinay-sur-Seine
'Coupe à pied noir', 1927-29**

H. 13 cm, Ø 40.5 cm. Cased glass, colorless, white and orange powder inclusions. Foot dark purple. Signed: SCHNEIDER (sandblasted and rubbed out).

Image online.

€ 400 - 600

246

**Schneider, Epinay-sur-Seine
Vase, 1930-33**

H. 22 cm. Pressed glass, colorless, with light blue powder inclusions. Stylized decor, partially matted. Signed: Schneider (needle engraving), on the bottom: FRANCE (cast).

Joulin/Maier, Charles Schneider, Augsburg 2004, p. 334.

€ 900 - 1.200



248

247

**Cristalleries de Saint-Louis
Wide bowl, c. 1925**

H. 15 cm, Ø 35 cm. Cased glass, colorless and ruby red. Etched decoration, with various fruits and leaves on a rough background. Bottom signed: CRISTAUX D'ART ST. LOUIS (acid stamp).

€ 1.300 - 1.600

248

**Verrerie de Belle-Etoile Daum et Cie., Croismare
Two 'Capucines' vases, c. 1926**

H. 29.5-29.7 cm. Cased glass, colorless, powder inclusions in lemon yellow, orange and violet. Polychrome enameled decoration with nasturtium. Signed: Calus (green enamel).

€ 1.000 - 1.500



250



249

249

**Henri Berge
'Salamandre' visiting card tray, 1920s**

H. 2.7 cm, 17 x 16.5 cm. Pâte de verre, translucent glass gather, molded, mainly lemon yellow, textured leaf decoration and semi-plastic salamander with polychrome powder fusion. Signed: AWalter Nancy, HBergé sc. (embossed).

€ 1.500 - 2.000

250

**Henri Berge
'Couronne de Fleurs' Vase, 1921**

H. 9.5 cm. Pâte de verre, translucent glass gather, predominantly amber brown. Floral wreath in relief with green, red and yellow powder fusions. Signed: AWALTER NANCY, HBergé sc (embossed).

Cat. Amalric Walter, Venice 2013, p. 24.

€ 900 - 1.200

251

**Henri Berge
Paperweight 'Caméléon', 1920s**

H. 8.2 cm. Made by Amalric Walter. Pâte de verre, molded, predominantly light and dark green and amber in color. Signed: AWALTER NANCY, HBergé sc (embossed).

€ 2.000 - 2.400

251





255

252

**Bohemia
Jardiniere, c. 1900**

H. 12.6 cm, 23.5 x 16.2 cm. Cased glass, colorless and pink, fused silver-yellow spots, pearlescent matt luster.

Image online.

€ 150 - 250

253

**Bohemia
Bowl, c. 1900**

H. 9.6 cm, Ø 20.5 cm. Cased glass, colorless, opal white and slightly pink, with a matt pearlescent luster. Fused spots in yellow, pink and dark red.

Image online.

€ 180 - 200

254

**Haida Glass School (ATTR.)
Goblet, c. 1915**

H. 11.3 cm. Overlaid glass, colorless and dark purple. Cut checkerboard decor.

Image online.

€ 250 - 350

255

**Wilhelm Kralik Son, Lenora
Table light 'Helioglas', c. 1902**

H. 51 cm, Ø 14 cm. Lemon-yellow opal glass, pink fused crushed glass, pearlescent matt luster. Brass base.

Cf. Hörtl (ed.), Das Böhmisches Glas, Vol. IV, Passau 1995, p. 156.

€ 900 - 1.200

256

**Wilhelm Kralik Sohn, Eleonorenhain
'Helioglas'-Vase, c. 1902**

H. 22.2 cm. Cased glass, colorless and light green, partially orange-red crumbly melting, mother-of-pearl matt lustered.

Image online.

€ 400 - 500

257

**Loetz, Klášterský Mlýn
Shell shaped 'Chiné Crystal', c. 1897**

H. 20.4 cm. Colorless and green glass, matt luster, fine mesh overlay, so-called Chiné decor. Applied arrowhead.

Ricke/Ploil, Lötze Böhmisches Glas, Vol. II, Munich 1989, p. 22, shape no. 7010.

€ 1.300 - 1.600



257

258

**Loetz, Klášterský Mlýn
'Papillon'-Vase, 1898**

H. 19 cm. Cased glass, blue and colorless, blue-green 'cobalt Papillon' decor, matt pearlescent luster.

Cf. Ricke/Ploil, *Lötz Böhmisches Glas*, vol. 2, Munich 1989, p. 38, no. 7659 (shape).

Image online.

€ 600 - 700

259

**Loetz, Klášterský Mlýn
'Papillon'-Vase, 1898**

H. 38 cm. Green glass with rolled-in crumbs in silvery yellow, 'creta Papillon', green and matt pearlescent luster.

Cf. Ricke/Ploil, *Lötz Böhmisches Glas*, vol. 2, Munich 1989, p. 38, no. 7682 (shape).

€ 900 - 1.200

260

**Loetz, Klášterský Mlýn
Rosewater Sprinkler 'Papillon', 1898-1900**

H. 23 cm. Green glass with rolled-in crumbs in silver-yellow, 'creta Papillon', green and matt pearlescent luster.

Image online.

€ 700 - 900



261

261

**Loetz, Klášterský Mlýn
Small 'Phänomen' vase, c. 1898**

H. 15.5 cm. Colorless glass, warped decoration of silver-yellow threads, Phänomen Gre 6893, strong pearlescent matt luster.

Signed: Loetz Austria (engraved).

€ 900 - 1.200

262

**Loetz, Klášterský Mlýn
Rosewater sprinkler 'Papillon' with silver-overlay,
1899**

H. 23.8 cm. Colorless glass, green 'creta papillon' decor, strong matt pearlescent luster. Floral silver overlay.

€ 1.000 - 1.400



259



262



263

**Loetz, Klášterský Mlýn
'Phänomen' vase, 1899**

H. 13 cm. Cased glass, milky opalescent and colorless, wall with combed decoration made of silver-yellow threads, Phänomen Gre 191, also 8069, strong pearlescent matt luster. Signed in the ground out tear: Loetz Austria (engraved).

€ 1.500 - 2.000

264

**Loetz, Klášterský Mlýn
Phänomen Vase, 1899**

H. 23.7 cm. Cased glass, light green and colorless, silver-yellow threads warped in the rib model, Phänomen Gre 6893, strong matt pearlescent luster.

€ 1.000 - 1.400

265

**Loetz, Klášterský Mlýn
Vase 'Papillon', c. 1899**

H. 15.5 cm. Cased glass, blue and colorless, blue-green 'cobalt papillon' decor, pearlescent matt luster.

Image online.

€ 350 - 550

266

**Loetz, Klášterský Mlýn
Vase with embossed Gold 'Papillon', c. 1899**

H. 17 cm. Cased glass, blue and colorless, blue-green 'cobalt papillon' decor, pearlescent matt luster. Floral decoration in relief gold.

Image online.

€ 450 - 650

267

**Loetz, Klášterský Mlýn
Rosewater sprinkler 'Papillon', 1899**

H. 23 cm. Colorless glass, creta papillon decor, strong pearlescent matt luster.

Image online.

€ 500 - 700

268

**Loetz, Klášterský Mlýn
Vase 'Pampas', 1899**

H. 13 cm. Green glass, the ground with dense silver-yellow fusions, colorless Pampas decor made of web-like thread layers, pearlescent matt luster.

Image online.

€ 250 - 350

269

**Loetz, Klášterský Mlýn
Small 'Papillon' vase, c. 1899**

H. 10.4 cm. Colorless glass, green 'creta papillon' decor, strong matt pearlescent luster.

Image online.

€ 250 - 350

270

**Loetz, Klášterský Mlýn
'Papillon'-Vase with Silver-Overlay, c. 1899**

H. 17.5 cm. Colorless glass, green 'creta papillon' decor, strong matt pearlescent luster. Silver overlay, coat of arms with inscription: Frieda Alfred, Andenken an Hulda u Paul MAY.

Image online.

€ 250 - 350



264



271

271

**Loetz, Klášterský Mlýn
'Phänomen' vase, 1899/1900**

H. 12.5 cm. Cased glass, colorless and amber; wavy net of silver-yellow ribbons, matt pearlescent luster. Marked on the bottom: ring arrow mark (Spaun coat of arms(engraved)). Cf. Ricke/Ploil, Lötzböhmisches Glas, vol. 2, Munich 1989, p. 60, No. 8056 (Shape).
€ 2.500 - 3.500

272

**Loetz, Klášterský Mlýn
'Phänomen'-Vase, um 1901-03**

H. 12 cm. Cased glass, colorless and raspberry red, silver-yellow drops in front of combed violet threads, mother-of-pearl matt lustered. Marked on the bottom: Lötzböhmisches Glas (engraved). Cf. Ricke/Ploil, Lötzböhmisches Glas, vol. 1, Munich 1989, p. 160, No. 159 (Decor).
€ 1.400 - 1.800

273

**Loetz, Klášterský Mlýn
'Asträa' vase, 1900**

H. 16.6 cm. Colorless glass, Astraea decoration of amber dots, ground with dense silver-yellow fusions, 'candia silver iris', pearlescent matt luster. Image online.
€ 350 - 550



272



274

274
Loetz, Klášterský Mlýn
Goblet 'Pampas', model for the
1900 Paris World Fair

H. 32 cm. Cobalt blue glass, the ground with dense silvery yellow layers, colorless Pampas decor made of net-like thread layers, matt pearlescent luster. Inscribed by a hand other than LC Tiffany (engraved).

Ricke/Ploil, Lötzböhmisches Glas, vol. 1, Munich 1989, p. 118, No. 85 (shape).

€ 1.000 - 1.500

275

Franz Hofstötter
'Phänomen' table light with world exhibition decor for Paris 1900

Cylindrical shaft on trumpet foot. H. 41 cm, Ø 21 cm. Made by Loetz, Klášterský Mlýn. Cased glass, opalescent and colorless, in the lower area combed, wavy, dark violet (black) decoration with silver threads, in the upper area red decoration with silver threads, similarly combed, in the middle area combed silver threads, presumably Phänomen Gre 358, strong pearlescent matt luster. Brass mounting, white and black synthetic silk shade.

Cf. Ploil, Loetz auf der Pariser Weltausstellung, Vienna 1993, p. 62; cf. Ricke/Ploil, Lötzböhmisches Glas, vol. 1, Munich 1989, p. 123, no. 91, *ibid.* p. 331 (decor).

€ 6.000 - 7.000



275



276

276

**Loetz, Klášterský Mlýn
Tall 'Cytisus' vase with pewter mounting, 1902**

H. 33.4 cm. Cased glass, opal light yellow and colorless, gradual marron in the lower area. Combed thread decoration, on it 'Cytisus' decoration of silver-yellow dots, matt pearlescent luster. Pewter mounting presumably by F. van Houten & Sohn, Bonn. Marked: crown, 1858, workshop mark.

Mounting with losses.

€ 2.500 - 3.500

277

**Loetz, Klášterský Mlýn
'Phänomen' table light, c. 1901**

H. 53 cm. Cased glass, colorless, opal white, combed blue and silver-yellow threads, matt pearlescent luster. Bronze base, dark patina.

€ 2.000 - 3.000



277



278

278

**Loetz, Klášterský Mlýn
'Phänomen' vase with drops, 1901**

H. 18.7 cm. Cased glass, milky opalescent and colorless, five drops of red glass of unequal length with silver-yellow stripes, wall with combed decoration of silver-yellow threads, Phänomen Gre 1/78, pearlescent matt luster. Bottom signed: Loetz Austria (engraved).

€ 2.500 - 3.500

279

**Franz Hofstötter
'Paris World Fair' vase, 1900**

H. 13 cm. Made by Loetz, Klášterský Mlýn. Cased glass, opal yellow and colorless, decor made of vertically dashed silver-yellow threads, on the upper wall area blue and silver-yellow thread decoration, wavy with drop-like tips, metallgelb Phänomen Gre 353, strong matt pearlescent luster. Signed: Loetz Austria (engraved).

Bröhan Museum Berlin, Bröhan Collection, Vol. II, Kunsthandwerk 1, Berlin 1977, no. 112; cf. Ricke/Ploil, Lötz Böhmisches Glas, vol. 1, Munich, 1989, p. It is one of the most elaborate Phänomen genres ever.

€ 3.800 - 4.800



279

280

Franz Hofstötter (ATTR.)

Phänomen vase with handles for E. Bakalowits Sons, 1902

Shape no. 85/4016/II. H. 18 cm. Made by Loetz, Klášterský Mlýn. Cased glass, yellowish opal and colorless. Phänomen Gre 358, black with white threads in the lower area, silver-yellow braided over it, wavy at the lip, warped red, pearlescent matt luster.

Ricke/Ploil, Lötzböhmisches Glas, vol. 2, Munich 1989, p. 295, no. 85/4016/II (shape).

€ 3.800 - 4.800

281

Loetz, Klášterský Mlýn

Vase 'Cytisus', 1902

H. 16 cm. Cased glass, opal orange and colorless, in the lower area densely spun with blue threads, above Cytisus decor of silver-yellow dots, pearlescent matt luster.

€ 2.200 - 2.800



280



281



282

282

**Loetz, Klášterský Mlýn
'Argus'-Vase, c. 1902**

H. 15.5 cm. Cased glass, colorless and amber-yellow, in the rib model, wavy, twisted decoration of silver-yellow threads and spots, strong cobalt blue and pearlescent matt luster.

€ 1.000 - 1.400

283

**Loetz, Klášterský Mlýn
Silver-plated 'Medici' vase, 1902**

H. 17.5 cm. Cased glass, colorless, 'marron' gradient, silver-yellow crumbly fusion, Medici decor, strong petrol matt luster, base bronze-colored matt luster. Galvanic silver plating, engraved decoration with water lilies. Marked: Loetz Austria (engraved).

Cf. Ricke/Ploil, Lötzt Böhmisches Glas, vol. 2, Munich 1989, p. 133, No. 2/529 (Shape).

€ 1.500 - 2.000

284

**Loetz, Klášterský Mlýn
'Silberiris' vase with silver-overlay, 1904**

H. 13 cm. Colorless glass, with dense silvery-yellow fusions, 'candia silver iris', with a strong pearlescent matt luster. Floral silver overlay.

€ 800 - 900



283



284

285

**Loetz, Klášterský Mlýn
Vase 'Rüschen', 1904**

H. 23.9 cm. Colorless glass with pinched ruffles, decor 'candia silver iris' dense silver-yellow crumb fusion, strong matt pearlescent luster, Rüschen.

Image online.

€ 700 - 800

286

**Loetz, Klášterský Mlýn
'Melusin' bowl, c. 1905**

H. 11.4 cm, 19.8 x 7.5 cm. Cased glass, colorless, densely spun blue between layers, optically ribbed.

€ 1.500 - 2.500

287

**Loetz, Klášterský Mlýn
'Phänomen' ceiling light, 1907**

H. 35 cm, Ø 35 cm. Cased glass, colorless and pink, warped silver-yellow threads and dots, gold and pearlescent matt luster, similar to Gre 566/294. Gilded brass suspension.

€ 2.500 - 3.000

288

**Loetz, Klášterský Mlýn
Vase with leaf wreath, 1912**

H. 12.5 cm. Glass, colorless and opaque red, lustered, colorless on leaves and berries, strong matt golden luster. Execution 141. Marked: Langer collection label (2x).

Image online.

€ 500 - 700



287

289

**Loetz, Klášterský Mlýn
Centerpiece, c 1925**

H. 17.4 cm, Ø 19.5 cm. Glass, colorless, opaque red, pearlescent matt luster, rim and node with fused dark blue ribbon. Execution 224.

Image online.

€ 500 - 700



286

290

**Meyr's Nephew, Adolfov
Wine glass, after 1900**

H. 23 cm. Colorless glass. Fine transparent enamel painting, decor with flower and diamond pattern. Foot and lip gilded.
Cf. Höltl (Ed.), Das Böhmisches Glas, Passau/Tittling, 1994, vol. IV, No. 252.
Image online.
€ 500 - 700

291

**Koloman Moser; Jutta Sika
Punch bowl, c. 1904**

H. 28 cm, 41.5 x 29.5 cm. Glass design: Koloman Moser, c. 1900. Shape and mounting: Jutta Sika, class of Koloman Moser, c. 1904. Executed by Meyr's nephew, Adolfov. Clear glass, optically blown with staggered nubs and vertical ridges; Mounting and cover made of brass, silver-plated.
Cf. Fenz, Koloman Moser, Salzburg/Vienna 1984, pp. 169 f.
€ 2.500 - 3.500

292

**Meyr's nephew, Adolfov
Wine glass, c. 1910**

H. 22.5 cm. Cased glass, colorless and dark violet. Cut decor.
Image online.
€ 500 - 600

293

**Heinrich Hussmann
Vase, 1929**

H. 20.5 cm. Made by Ludwig Moser, Karlo Vyvary. Alexandrite glass, cut and polished. Marked: Moser (acid stamp).
Image online.
€ 350 - 450

294

**Gräflich Schaffgotsch'sche Josephinenhütte, Szklarska Poreba (ATTR.)
Vase with handles, c. 1900**

H. 14.5 cm. Glass, slightly greenish iridescent, etched. Stylized floral enamel and gold decoration with two applied lion heads.
Cf. Höltl (ed.), Das Böhmisches Glas, Vol. V, Passau 1995, p. 75.
Image online.
€ 300 - 500



291

295

**Harrach, Neuwelt
'Jaspis' vase, 1900-05**

H. 18.7 cm. So-called 'jaspis' glass, green with chrome aventurine inclusions. Gilded and enameled, stylized leaf decoration. Marked: collection label.
Image online.
€ 250 - 350

296

**Harrach, Neuwelt
Two 'Jaspis' vases, 1900-05**

H. 16 cm. So-called 'jaspis' glass, green with chrome aventurine inclusions. Gilded and enameled. Marked: Langer collection label.
Image online.
€ 300 - 400

297

**Max Rade
'Dragonfly' vase, 1900**

H. 14.4 cm. Execution by Fritz Heckert, Petersdorf. Cyprus glass, matt iridescent. Polychrome enamel decoration with dragonfly over a shore landscape. Lip chipped.
Image online.
€ 200 - 300

298

**Adelbert Niemeyer
Goblet 'Henkell', 1905**

H. 28 cm. Made by Benedikt von Poschinger, Oberwieselau. Colorless glass, cut decoration, gilded, matt chip carving.
Exh. cat. Europalia 77, Brussels 1977, no. 573.
Image online.
€ 200 - 300

299

**Peter Behrens
Three champagne glasses, 1899**

H. 21 cm. Made by Benedikt von Poschinger, Oberwieselau. Colorless glass.
Cf. cat. Museum Künstlerkolonie Darmstadt, Darmstadt 1990, p. 16.
€ 600 - 800



299



300

**Karl Schmoll von Eisenwerth
'Peacock Feather' Vase, 1899/1900**

H. 35.5 cm. Made by Ferdinand von Poschinger, Buchenau, Spiegelhütte factory.
Cased glass, colorless, light blue, combed light violet and green threads, pearlescent
matt luster. Bottom marked: No. 446, Ferd. von Poschinger Buchenau Bayern Glashüt-
tenwerke (gold).

The model was presumably designed for the Paris World Fair in 1900. See Hötl (ed.),
Das Böhmisches Glas, Vol. V, Passau 1995, No. V.14.

€ 2.000 - 2.500

Karl Schmoll von Eisenwerth's glasses for the Ferdinand von Poschinger Glassworks

From a private Art Nouveau collection come the glasses presented on the following pages from the Glashütte Ferdinand von Poschinger, which the art lover collected over a period of several decades. Among them are some lustrated vases with finely combed thread decoration and peacock feather decoration, designed by the artist Karl Schmoll von Eisenwerth, which appear very rarely on the art market.

The glassworks of Ferdinand Poschinger in Buchenau in the Bavarian Forest was one of the leading manufactories able to produce art glass with modern lustrated decorations around 1900. Louis C. Tiffany had set new standards in the field of art glass with his designs at the world exhibitions.

At the Ferdinand Poschinger Glashütte, the important Art Nouveau painter Karl Schmoll von Eisenwerth (1879-1947) was one of the artists, along with Hans Christiansen and Julius Diez, who successfully introduced Art Nouveau forms into the production of art glass. Ferdinand von Poschinger, who took over his inheritance in 1881, was open to everything new. He ensured that his estate had a better infrastructure, was connected to the railroad network, and supplied the town of Buchenau with electricity throughout the area. Under his leadership, the Buchenau and Spiegelhütte glassworks took part in numerous international exhibitions - in 1893 at the World's Fair in Chicago and in 1900 at the World's Fair in Paris. Karl Schmoll von Eisenwerth stayed in Buchenau regularly from 1900 to 1914, at least once a year, to create art glass.

Poschinger's collection for the Paris World's Fair, which was awarded a silver medal, consisted, among other objects, of fashionable glassware with combed around decoration in the style of Tiffany (cf. Hörtl (ed.), *Das Böhmisches Glas*, vol. V, Passau 1995, p. 18). A wonderful example of this is the tall vase in the form of an elongated flower capsule in a light blue ground tone (Cat. No. 300) with light purple and green combed threads and mother-of-pearl shimmer. Based on the elaborate signature, this example is most likely one of those vases made for the World Exhibition in Paris (cf. Hörtl (ed.), *Das Böhmisches Glas*, vol. V, Passau 1995, no. V. 14).

Art glass was highly valued in the Poschinger glassworks. The best designs were created as unique pieces or in very small editions, which were signed and numbered. In contrast to the strongly metallic iridescent glasses from the Joh. Lötzwwe. glassworks with their often expressive iridescent threads, the emphasis at Poschinger was on a harmonious overall impression with delicate, soft colors. Symmetrical feather-like forms dominate, which are also taken up again but varied in the areas of the stand and muzzle.

Karl Schmoll von Eisenwerth also experimented with cast glass, etching and cutting techniques, as well as the 'Marqueterie de Verre' technique mastered by Emile Gallé, in which glass parts are joined together with a base. Schmoll's 'French style' is evidenced by a vase with a surrounding pond landscape (Cat. No. 309), which was made using etching and cutting techniques. Splendid lotus blossoms in dark blue against green hues appear above a water surface with fish.



301

Karl Schmoll von Eisenwerth Vase 'Chrysanthemums', before 1900

H. 16.2 cm. Made by Ferdinand von Poschinger, Buchenau, Spiegelhütte factory. Cased glass, colorless, opal white and violet. Etched and cut decor with chrysanthemums. Bottom marked: Ferd. von Poschinger Buchenau Bayern Glashüttenwerke (gold, rubbed). Schack v. Wittenau, Karl Schmoll von Eisenwerth, Stuttgart 1995, p. 193.

€ 2.500 - 3.500

302

Karl Schmoll von Eisenwerth
'Peacock Feather' Vase, c. 1900

H. 19.4 cm. Made by Ferdinand von Poschinger, Buchenau, Spiegelhütte factory. Cased glass, colorless, green, combed violet threads, pearlescent matt luster. Ground marked: Ferd. von Poschinger Buchenau Bayern Glashüttenwerke (gold). Schack v. Wittenau, Karl Schmoll von Eisenwerth, Stuttgart 1995, p. 226, no. K 21 (form).

€ 1.000 - 1.400



303

Karl Schmoll von Eisenwerth
'Peacock Feather' Vase, c. 1900

H. 29.5 cm. Made by Ferdinand von Poschinger, Buchenau, Spiegelhütte factory. Cased glass, colorless, amber-brown, combed dark red and green threads, twisted four times, pearlescent matt luster. Bottom marked: No. 159, Ferd. von Poschinger Buchenau Bayern Glashüttenwerke (gold).

Cf. Hötl (ed.), *Das Böhmisches Glas*, Vol. V, Passau 1995, No. V.20.

€ 2.400 - 2.800





304

**Ferdinand von Poschinger, Buchenau
Tall 'Peacock Feather' vase, c. 1900**

H. 32 cm. Cased glass, colorless, opal white, warped yellow and turquoise threads, pearlescent matt luster. Ground marked: No. 412, Ferd. von Poschinger Buchenau Bayern Glashüttenwerke (gold).

€ 1.800 - 2.400

305

**Ferdinand von Poschinger, Buchenau
'Peacock Feather' Vase, c. 1900**

H. 20.3 cm. Cased glass, colorless, dark pink, combed dense white threads, pearlescent matt luster. Bottom marked: Ferd. von Poschinger Buchenau Bayern Glashüttenwerke No. 607 (gold, rubbed).

€ 2.400 - 3.000



306

**Ferdinand von Poschinger, Buchenau
'Peacock Feather' Vase, c. 1900**

H. 20.8 cm. Cased glass, colorless and green, dark green ribbon, combed opal white threads, pearlescent matt luster. Bottom marked: No. 452 Ferd. von Poschinger Buchenau Bavaria Glashüttenwerke (gold).

€ 1.000 - 1.500

307

**Karl Schmoll von Eisenwerth
Small 'Peacock Feather' vase, c. 1900**

H. 11 cm. Made by Ferdinand von Poschinger, Buchenau, Spiegelhütte factory. Cased glass, colorless, light violet, combed threads in opal white, pearlescent matt luster. Bottom marked: No. 314 Ferd. von Poschinger Buchenau Bayern Glashüttenwerke (gold). See Höltl (ed.), *Das Böhmisches Glas*, Vol. V, Passau 1995, No. V.19 (shape).

€ 900 - 1.200

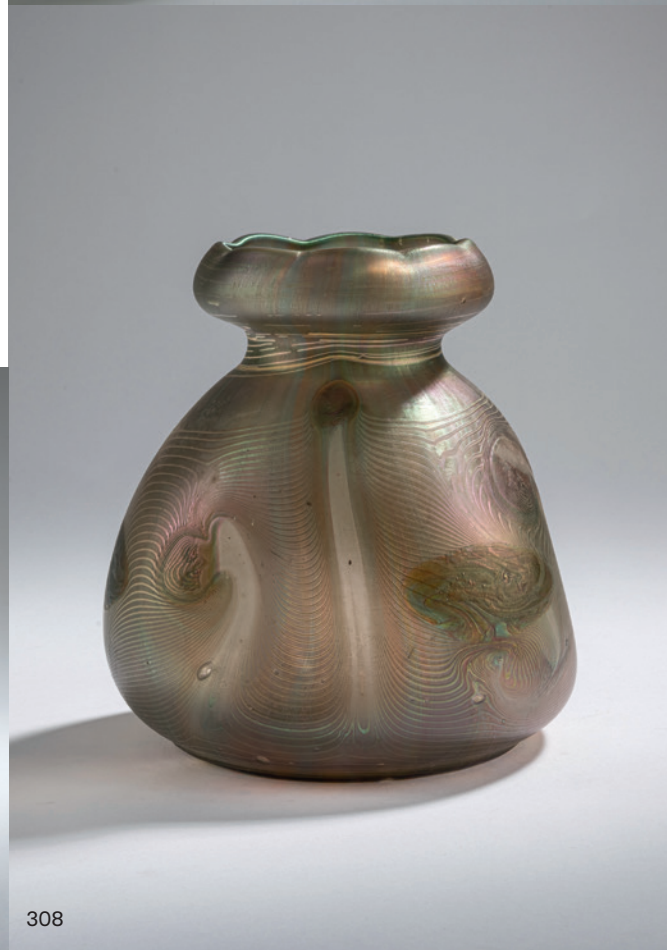
308

**Karl Schmoll von Eisenwerth
'Peacock Feather' vase, before 1900**

Triangular, tapering over a round stand with three indentations, flared, florally ruffled mouth. H. 15.7 cm. Made by Ferdinand von Poschinger, Buchenau, Spiegelhütte factory. Cased glass, colorless, bronze-brown, combed cream-colored threads and green-bluish spots, pearlescent matt luster. Marked on the bottom: Ferd. von Poschinger Buchenau Bayern Glashüttenwerke No. 610 (gold, rubbed).

Schack v. Wittenau, *Karl Schmoll von Eisenwerth*, Stuttgart 1995, p. 224, no. K 1.

€ 1.600 - 2.200



309

Karl Schmoll von Eisenwerth
Vase 'pond landscape', before 1900

Bell shape with quatrefoil mouth. H. 14.5 cm. Made by Ferdinand von Poschinger, Buchenau. Cased glass, colorless, lemon yellow and dark blue. Etched and cut decor of a pond landscape with fish and aquatic plants.

Schack v. Wittenau, Karl Schmoll von Eisenwerth, Stuttgart 1995, p. 188.

€ 2.500 - 3.500



310

Karl Schmoll von Eisenwerth
Small 'Peacock Feather' vase, c. 1900

H. 14.5 cm. Made by Ferdinand von Poschinger, Buchenau. Cased glass, colorless, dark violet, with combed red threads, three times warped stylized leaf decor, pearlescent matt luster.

See Höltl (ed.), *Das Böhmisches Glas*, Vol. V, Passau 1995, No. V.18; Schack v. Wittenau, *Karl Schmoll von Eisenwerth*, Stuttgart 1995, p. 177 (shape).

€ 600 - 800

311

Karl Schmoll von Eisenwerth
Marquetry-Vase, 1901-03

In the form of a stylized flower with a quatrefoil mouth. H. 33 cm. Made by Ferdinand von Poschinger, Buchenau. Cased glass, colorless, opal white and pink, pearlescent matt luster. Large pink orchid with green leaves applied on the front.

See Höltl (ed.), *Das Böhmisches Glas*, Vol. V, Passau 1995, Nos. V.22-24; Schack v. Wittenau, *Karl Schmoll von Eisenwerth*, Stuttgart 1995, p. 187 (dated there before 1900).

€ 900 - 1.200

312

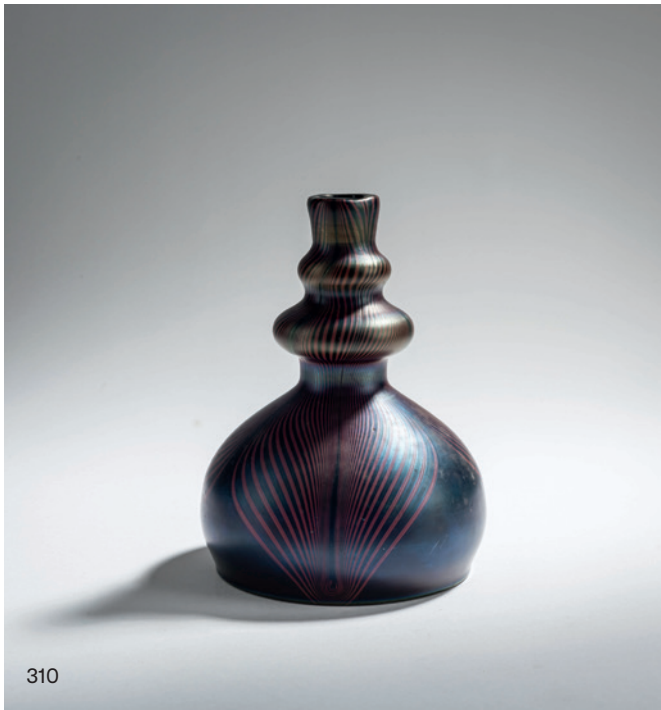
Ferdinand von Poschinger, Buchenau
Small 'Peacock Feather' vase, c. 1902

Oval. H. 10.5 cm. Cased glass, colorless, orange, blue and pink, combed blue threads and pink dots, pearlescent matt luster.

€ 1.800 - 2.400



311



310



312



314

313

**Ferdinand von Poschinger, Buchenau
Small 'Peacock Feather' vase, c. 1902**

H. 11 cm. Cased glass, colorless, ruby red, combed yellow-green threads, pearlescent matt luster.

Image online.

€ 400 - 600

314

**Ferdinand von Poschinger, Buchenau
'Peacock Feather' Vase, c. 1902**

Stylized floral with folded muzzle. H. 21.8 cm. Cased glass, colorless, amber-brown, combed greenish threads and spots, pearlescent matt luster.

€ 1.400 - 2.000

315

**Ferdinand von Poschinger, Buchenau
'Peacock Feather' Vase, c. 1906**

H. 12.6 cm. Cased glass, colorless, opal pink, combed violet threads, pearlescent matt luster.

Image online.

€ 400 - 600

316

**Ferdinand von Poschinger, Buchenau (ATTR.)
Vase, 1900-05**

H. 20.5 cm. Cased glass, colorless, opalescent white and violet, combed silver-yellow striped decor, matt pearlescent luster.

Image online.

€ 600 - 800

317

**Theresienthal
Six wine glasses '1792', c. 1905**

H. 21.2 cm. Colorless glass, enameled and gilded decor with wreaths and flower garlands.

€ 600 - 800

318

**Theresienthal
Goblet '504', c. 1885**

H. 16.5 cm. Light green glass, rich polychrome enamel decoration, heightened with gold. Marked on the base (pres. added later): E. Gallé Nancy (residue of gold).

Warthorst, Theresienthal, Freiburg 1996, p. 11; related to the decorations in 'Persian style' by J. & L. Lobmeyr, Vienna, based on designs by the architect Rehländer, fig. in: Neuwirth, Orientalizing Glasses, Vienna 1981, fig. 28 f.

Image online.

€ 500 - 700



317

319

Karl Lindeberg

Small vase with butterfly, c. 1900

H. 5.8 cm. Made by Kosta Glasbruk AB, Ekeberga near Kosta. Cased glass, colorless and amber brown. Etched decor with butterfly. Bottom signed: Kosta KL (needle etching).

Image online.

€ 350 - 400

320

Louis C. Tiffany

Goblet, 1896

H. 19,4 cm. Cased glass, green, milk white and colorless. Optically blown bowl, heavy luster in gold on the inside, foot pearlescent on the underside. Signed on the bottom: LCT F 2576 (engraved).

€ 600 - 800

321

Louis C. Tiffany, New York

Tall vase, 1909

H. 42.1 cm. Deep blue Favrile glass, with strong gold and petrol matt luster. Signed on the bottom: 6413 D, LC Tiffany Favrile (engraved).

€ 900 - 1.200

322

Romain Gevaert (attr.)

'Oignons de Jemeppe' vase, c. 1909

H. 41.7 cm. Made by Val St. Lambert. Cased glass, colorless, opal beige and dark blue. Signed: VSL (blue stamp), remains of a paper label.

€ 800 - 900



321



320



322



IMPRESS

MANAGING DIRECTOR AND AUCTIONEER:

Askan Quittenbaum
+49 89 273702-113
a.quittenbaum@quittenbaum.de

DEPUTY MANAGING DIRECTOR:

Dr. Claudia Quittenbaum
+49 89 273702-111
c.quittenbaum@quittenbaum.de

SPECIALISTS:

Askan Quittenbaum
+49 89 273702-113
a.quittenbaum@quittenbaum.de

Faridah Younès M.A.
+49 89 273702-115
f.younes@quittenbaum.de

Nadine Becker M.A.
+49 89 273702-10
n.becker@quittenbaum.de

BOOK KEEPING AND CATALOGUE ORDER:

Annette Ehrenhardt
+49 89 273702-120
buchhaltung@quittenbaum.de

LOGISTIC AND SHIPPING:

Dirk Driemeyer
+49 89 273702-112
d.driemeyer@quittenbaum.de

M2 Logistik
+49 8121 223015
service@m2logistik.de

Mail Boxes Etc.
MBE Lippl Business Service
+49 8131 37 99 132
antique-muc@mbe-dachau.de

PHOTOGRAPHS:

Jochen Splett

DESIGN:

Daniela Paringer,
design & print GbR

PRODUCTION AND PRINT:

Peschke Solutions GmbH,
München





QUITTENBAUM
Kunstauktionen München

QUITTENBAUM Kunstauktionen GmbH

Theresienstrasse 60 · D-80333 Munich

Phone 089-27370210 · Fax 089-273702122

info@quittenbaum.de · www.quittenbaum.de

