

SCHOOLS OF DESIGN

Auction 166 A

29 November 2022





SCHOOLS OF DESIGN

AUCTION 166 A

TUESDAY, 29 NOVEMBER 2022

3 P.M.

**PREVIEW:
THERESIENSTR. 60**

Thursday	24.11.	10 a.m. - 6 p.m.
Friday	25.11.	10 a.m. - 6 p.m.
Saturday	26.11.	1 - 5 p.m.
Sunday	27.11.	1 - 5 p.m.
Monday	28.11.	10 a.m. - 6 p.m.

**QUITTENBAUM
Kunstauktionen GmbH**

Managing Director: Askan Quittenbaum
Theresienstrasse 60 · D-80333 Munich
Phone (+49) 89-27 37 02 10
Fax (+49) 89-27 37 02 122
E-Mail info@quittenbaum.de
Opening hours: Tuesday - Friday
3 - 6 p.m.
and by appointment



Mitglied der Initiative
Datenbank
kritischer Werke



Bundesverband Deutscher Kunstversteigerer e.V.





1

Liberty & Co., London
Table clock, c. 1905

H. 19.5 cm, 12 x 5.7 cm. Made by WH Haseler, Birmingham. Pewter, copper, blue-green enamel, brass hands, glass. Marked: 01144 ENGLISH PEWTER MADE BY LIBERTY & CO. (shaped).

Mechanical clockwork.

€ 1.400 - 1.600

Archibald Knox
Coffee, tea service, 1903

Five pieces. Coffee pot, H. 21.7 cm; teapot, H. 11 cm; creamer, H. 7.3 cm; sugar bowl, H. 6.5 cm, tray, 45.5 x 25 cm. Made by WH Haseler & Co., Birmingham for Liberty & Co., London. Pewter, floral decoration in relief. Braided handle. Marked: ENGLISH PEWTER MADE BY LIBERTY & CO, 0231, RD 420290 or 0309 (tray). Tray additionally: "TUDRIC".

Martin, Archibald Knox, London 1995, p. 110.

€ 900 - 1.200



3

**Liberty & Co., London
Cigarette box, 1905**

9.4 x 8.9 cm. Made by WH Haseler, Birmingham. Silver, celtic wattle decor in blue and green enamel. Gold plated inside. Marked: L&C., anchor, lion passant, date letter f (embossed).

Arwas, Liberty Style, Japan 1983, p. 137.

€ 500 - 600



3

4

**Liberty & Co., London
Box, c. 1905**

H. 7 cm, 16.6 x 10 cm. Made by WH Haseler & Co., Birmingham. Pewter, set jade stone. Marked: ENGLISH PEWTER MADE BY LIBERTY & CO, 0124 (embossed).

€ 300 - 400



4

5

**Archibald Knox
2 candlesticks, 1902-05**

H. 14.1-14.3 cm. Made by WH Haseler & Co., Birmingham, for Liberty & Co., London. Pewter. Marked: TUDRIC 0221 (embossed).

Martin, Archibald Knox, London 1995, p. 113.

€ 400 - 500



5



6

6

Koloman Moser
2 'Meteor' carafes, 1899

H. 28-28.4 cm. Made by Meyr's Neffe, Adolfov für Bakalowits & Söhne, Vienna. Colorless glass with optical nubs and stripes decor. Unsigned.

Stoppers lost.

Cf. Pazaurek, *Moderne Gläser*, reprint Karlsruhe 1976, p. 59; Exh. cat. *Traum und Wirklichkeit*, Historisches Museum der Stadt Wien, Vienna 1985, p. 368.

€ 400 - 600

7

Koloman Moser
Decanter, c. 1899

H. 17 cm. Made by Meyr's Neffe, Adolfov. Glass, optically blown, colorless/gradient raspberry pink. Unsigned.

€ 400 - 600



7



8

Josef Hoffmann
Teapot with Creamer, 1904

H. 6.5-17 cm. Made by Wiener Werkstätte.
 Silver, ebonized wood. Marked: WW, JH, head of Diana,
 signets of the silversmiths JH and KK, rose mark (embossed).
 Engraved owner's monogram T.
 mak.at Inv.-Nr. WWF 93-2-10;
 Exh. cat. Traum und Wirklichkeit,
 Historisches Museum der Stadt
 Wien, Vienna 1985, p. 346.

€ 22.000 - 28.000





10

Josef Hoffmann
Ceiling light, c. 1900/01

H. 23.5 cm, Ø 37 cm. Sheet brass, cut glass. chipboard. Not signed.

Not electrified.

Cf. Thun-Hohenstein et al. (ed.), Josef Hoffmann, progress through beauty, Basel 2022, p. 157, house Dr. Hugo Henneberg.

€ 7.000 - 9.000

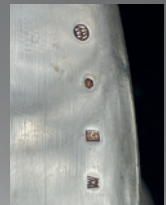
9

Josef Hoffmann
2 dishes 'Cloverleaf Humped', 1905-10

H. 2.9 cm, 18.8 x 12.6 cm; H. 3 cm, 18.5 x 12.6 cm. Made by Adolf Wertnik at the Wiener Werkstätte. Silver. Marked: rose mark, JH WW, Diana head, AW (embossed).

204 and 237 grams of silver.
mak.at Inv.-No. KI 12031-26.

€ 4.000 - 6.000



11

Max Schmidt

Coffee table 'à la Loos', c. 1905

H. 65 cm, Ø 90 cm. Made by Friedrich Otto Schmidt, Vienna. Beech wood, stained dark, sheet brass, glass.

Adolf Loos was close friends with the heads of the carpentry workshop, FO Schmidt, Max and Leo Schmidt. Max Schmidt was heavily influenced by Loos' theories in his designs.

Cf. Ottillinger, Adolf Loos, Vienna 1994, pp. 71-80.

€ 3.000 - 4.000



12

J. & J. Kohn, Vienna
Double bed, c. 1905

H. 124 x 147 x 200 cm. Beech wood, beech plywood, bent, stained dark; Plywood, paneling stained light and dark. Marked: manufacturer's label.

€ 1.800 - 2.200



13

Josef Hoffmann
Flower basket, 1906

H. 26 cm, 9.5 x 12 cm. Made by Wiener Werkstätte. Silver plated metal. Marked: WW, rose mark (embossed), 3335-10 (incised). Without glass insert.
 mak.at Inv.-No. WWF 132-53-1.

€ 1.200 - 1.600



14

Otto Wagner
2 'Postsparkasse Vienna' armchairs, 1907

H. 77 cm, 54 x 57.5 - H. 77 cm, 55 x 57.5 cm. Made by Thonet, Vienna. Bent beech wood, stained dark brown, black synthetic leather. Marked: embossing stamp THONET 1.

The Postsparkasse in Vienna, built between 1903 and 1912, is a perfect example of Wagner's will to create a Gesamtkunstwerk. Aluminum and glass structure the outer facade. All materials and construction methods used were selected for durability and ease of care, an idea that is still very relevant today! Aluminum and glass also structure the interior of the huge room, even the floor is covered with transparent glass, which supports the inflow of natural light from above. Many small wall/pillar lights also add to the illumination.

Wagner had the furniture produced by the companies Thonet and Kohn. He planned the armchairs made of bent wood in different versions, depending on the environment in which they were to be used, in a clear hierarchy between the director's office and the waiting area in the cashier's hall.

Exh. cat. Traum und Wirklichkeit, Historisches Museum der Stadt Wien, Vienna 1985, pp. 88-105.

Ostergard, Bent Wood and Metal Furniture, New York 1987, no. 46.

€ 3.000 - 4.000



14



15

Carl Otto Czeschka

Three swatches 'Feldlerche', 'Fischreiher' und 'Haushund', 1910-11

18.6 x 12 - 18.6 x 12.5 cm. Made by Wiener Werkstätte. Light silk, printed in black. Each mounted in a passe-partout with a handwritten label.

Wiener Werkstätte numbers: 299, 303, 337.

Völker, Die Stoffe der Wiener Werkstätte, Vienna 1990, p. 63 ('Haushund'), p. 65 ('Feldlerche').

€ 1.500 - 2.000

16

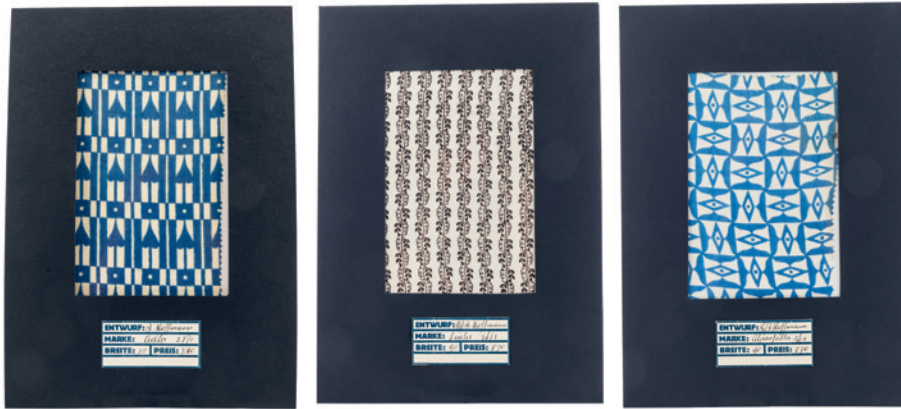
Lotte Fochler-Frömel
Swatch 'Kolibri', 1910-11

19 x 11.8 cm. Made by Wiener Werkstätte. Silk, printed in black. Mounted in a passe-partout with a handwritten label.

Wiener Werkstätte number: 367.

€ 500 - 800





17

Josef Hoffmann

Three swatches 'Alpenfalter', 'Adler' und 'Lerche', 1910-11

18.5 x 11.6 - 18.6 x 12.3 cm. Made by Wiener Werkstätte. Silk, printed in black or blue, 'Adler' cotton with blue print. Each mounted in a passe-partout with a handwritten label.

Wiener Werkstätte numbers: 28, 29, 392/a.

Völker, Die Stoffe der Wiener Werkstätte, Vienna 1990, p. 65 ('Alpenfalter', 'Adler').

€ 1.500 - 2.000

18

Koloman Moser

Three swatches 'Bergfalter' and 'Baummarder' in two colors, 1910-11

18.5 x 12 - 18.5 x 12.5 cm. Made by Wiener Werkstätte. Silk, printed in black or blue, 'Bergfalter' cotton, printed in black. Each mounted in a passe-partout with a handwritten label.

Wiener Werkstätte numbers: 5 and 6.

Völker, Die Stoffe der Wiener Werkstätte, Vienna 1990, p. 37 ('Bergfalter').

€ 1.500 - 2.000



19

19

Josef Hoffmann

Coffee cup 'Merkur', 1910/11

H. 5.5 cm. Made by Josef Böck and Pfeifer and Löwenstein, Ostrov nad Ohri, commissioned by the Wiener Werkstätte, c. 1920. Porcelain, white, glazed, black stripes over glaze, with gold. Marked: Manufactory marks (green, under glaze), 1330 (black, on glaze).

Deutsche Kunst und Dekoration XXXI, 1912-13, np; Max Eisler, Österreichische Werkkultur, ed. by the Austrian Werkbund, Vienna 1916, p. 157; exh. cat. Josef Hoffmann, Museum Bellerive, Zurich 1982, no. 190, pot with this decor; Exh. cat. Traum und Wirklichkeit, Historisches Museum der Stadt Wien, Vienna 1985, p. 377.

€ 1.500 - 2.000



20

20

**Otto Prutscher
Cushion cover, c. 1910**

49.5 x 51cm. Made by Herrburger & Rhomberg, Dornbirn.
Cotton, natural white and black. Unsigned.

Cf. mak.at Inv.-no. T 12764.

€ 400 - 600

21

**J. & J. Kohn, Vienna
Bench '432', 1910s**

H. 80 x 132 x 55 cm. Beech wood, bent beech wood, stained dark.

€ 1.400 - 1.800



21

22

**Vienna
Hallstand, 1910s**

H. 200 cm, Ø 37 cm. Rectangular metal tube,
metal, welded and riveted, blackened.

€ 900 - 1.200



22

23

**Josef Hoffmann; Hilde Jesser
'Single Draught' glass**

H. 25.2 cm. Made by: Johann Oertel, Haida, for the Wiener Werkstätte. Glass, colorless, partially gilded. Polychrome enamel decoration with a happy round dance.

Cf. Neuwirth, Wiener Werkstätte, Avant Garde, Vienna 1984, p. 164, no. 124; Exh. cat. Traum und Wirklichkeit, Historisches Museum der Stadt Wien, Vienna 1985, p. 372.

€ 900 - 1.200

24

**Josef Hoffmann
Cup, c. 1920**

H. 12.6 cm, Ø 12.6 cm. Made by Wiener Werkstätte. Colorless glass, slightly iridescent, so-called 'muslin glass'. Unsigned.

Franz (ed.), The Glass of the Architects, Vienna 1900-1937, Venice 2017, p. 244; cf. Schweiger, Wiener Werkstätte, Vienna 1982, p. 190 (sketch).

€ 300 - 400



25

**Josef Hoffmann
Goblet with planetary symbols, 1922/23**

A wide bowl with a slightly flared rim on a trumpet base. H. 9 cm, Ø 13.5 cm. Made by Wiener Werkstätte. Silver. Marked: MADE IN AUSTRIA, WW, JH, 900 (embossed).

203 grams of silver.

mak.at Inv.-no. KI 11997-14.

€ 3.000 - 5.000



25



26

26

**Josef Hoffmann; Mathilde Flögl (Flöge)
Document folder, 1927/29**

34.5 x 27.5 cm. Made by Wiener Werkstätte. Black leather, grained, gilt edge. Signed: WIENER WERKSTÄTTE (gilt edge).
Exh. cat. Josef Hoffmann Designs, MAK Vienna, Munich 1992, p. 225;
exh. cat. Der Preis der Schönheit, Vienna 2003, p. 381, L 40.

€ 1.200 - 1.600



27

27

**Vienna
Lamp base, c. 1928**

H. 39.8 cm. Cast brass. Stylized floral relief decoration.

€ 600 - 800

28

**Adolf Loos; Heinrich Kulka (STYLE)
Fireside chair, c. 1932**

H. 66 x 53 x 47 cm. Made by FO Schmidt, Vienna (ATTR).
Oak wood, stained dark, leather straps, brown, linen fabric.
From 1919, Heinrich Kulka was the assistant of Adolf Loos.
In 1927 he became an equal partner. After Loos' death in 1933, Kulka continued his work until the annexation of Austria in 1938. As a Jew, Kulka and his family had to flee from the Nazis and eventually ended up in Auckland, New Zealand via several stations. He also managed to establish himself as a successful architect there.

€ 900 - 1.200



28



29

Josef Hoffmann; Viktor Lurje
Box 'Neptune', 1937/38

H. 18.7 cm, 35 x 23 cm. Made by Rudolf Bojanovsky, decorative arts and crafts, Vienna. Rosewood, inlaid decor made of different precious woods. Neptune with a trident holding a sailing ship, designed by Viktor Lurje. Interior stained black. Marked inside the lid: Signet JH, RB (embossed). The florally designed feet and the lid handle made of carved ivory.

The box shows some design features of Hoffmann's later work. The architect and painter Victor Lurje (Vienna 1883 - 1944 Jaipur) had worked with Josef Hoffmann at the Wiener Werkstätte and later at the Kunstgewerbeschule in Vienna. For attribution see mak.at. inventory no. WWF 107-37-6 or Thun-Hohenstein et al. (ed.), Josef Hoffmann 1870-1956 Fortschritt durch Schönheit, Basel 2021, p. 351.

An EC certificate has been issued for this lot by the Department for Climate and Environmental Protection of the City of Munich, which allows objects with ivory to be marketed within the European Union.

€ 6.000 - 7.000



30

Henry van de Velde
Armchair, 1897/98

Rounded seat, rounded backrest and armrests on slightly curved legs.

H. 100 x 67 x 62 cm. Mahogany, orange-red leather, upholstery nails.

Marked: artist's signet (2x).

Original design for the art dealers Bruno and Paul Cassirer, Berlin.

Repairs.

Pecher, Henry van de Velde, vol. 1, Munich 1981, p. 131, No. 1113.

€ 6.000 - 8.000





31

**Henry van de Velde
Pendant, 1898**

42 x 40 mm. Silver, open-work, moonstones, brilliants. Unsigned.

Provenance: From the estate of Dorothea, the niece of the painter Curt Herrmann (1854-1929), who was a friend of van de Velde's; private collection, Berlin.

Cf. Die Kunst, vol. 2 (1900), p. 10; cf. Föhl/Neumann, Henry van de Velde, Bd. I, Metalkunst, Leipzig 2009, S. 24, No. 1.1.8. The model depicted there was exhibited at the Salon de Libre Esthétique in Brussels in 1900. Where it is today is unknown.

€ 15.000 - 25.000





32

**Henry van de Velde
Chair, 1899**

Straight frame on slightly curved legs, slightly protruding trapezoidal seat at the front, two triangular decorative pieces of wood on the left and right; Slightly swinging, shield-shaped backrest with a straight end. H. 96.8 x 48 x 52 cm. Mahogany, orange-red leather, upholstery nails. Marked: Artist's signet (2x).

Variant of the Bloemenwerf chair.

Left hind leg restored, crack in the rear part of the seat.

Pecher, Henry van de Velde, vol. 1, Munich 1981, p. 153, No. 1102d.

€ 4.000 - 5.000



33

**Richard Riemerschmid
Armchair 'Haus Fieser, Baden-Baden', 1902**

H. 76.5 cm, 60.5 x 52.5 cm. Made by B. Kohlbecker & Sohn, Munich (attr.). Oak, leather, upholstery nails.

Exh. cat. Richard Riemerschmid, Munich Municipal Museum, Munich 1982, p. 160.

€ 1.200 - 1.600



34

**August Hanke
Henkelvase, 1902**

H. 23.7 cm. Made by Reinhold Hanke, Höhr. Majolica, fire-glazed in shades of violet and blue. Marked: 9302 (embossed).

After the early death of the father and company founder Reinhold Hanke (1840-1886) in Höhr in the Westerwald, the widow Maria Josefa continued to run the stoneware pottery until the brothers Carl (1873-1908) and August were able to act as commercial and artistic directors to take over the company.

August had completed a degree in chemistry in Munich and attended the School of Applied Arts. At the Paris World Exhibition in 1900, where the R. Hanke company presented its "old German" goods, he was fascinated by the new Art Nouveau trend and he got to know the glazing techniques from France and Japan. When he took over the artistic direction of the company in 1901, he began to experiment with reduction firing himself. His copper red ("China red") and "Titanium blue" remained unrivaled in quality for a long time. He also succeeded in getting contemporary artists such as Henry van de Velde, Peter Behrens and Albin Müller to collaborate and to modernize the company's repertoire accordingly. From 1902 August also designed his own ceramics, which were strongly based on Velde's works.

1911/12 -18 the workshops Hanke, R. Merkelbach and S. P. Gerz merged to form the Steinzeugwerke Höhr-Grenzhausen GmbH. As a member of the German Werkbund, many works bear the DW stamp. During the First World War the company suffered some losses, but the worst blow came when the factory was destroyed by fire in 1921. After that, it could only be continued to a fraction of its former extent.

The company finally closed its doors when August Hanke died in 1938.

Cf. Föhl/Neumann, Henry van de Velde, Vol. III, Weimar 2016, p. 592 (no longer attributed to van de Velde).

€ 1.000 - 1.500

35

**Richard Riemerschmid
2 chairs, 1902**

H. 80.5 x 47 x 49 cm. Made by Dresdener Werkstätten, Hellerau. Oak wood, stained dark, brown leather covering with upholstery nails.

Exh. cat. Richard Riemerschmid, Munich 1983, p. 162, no. 90b.

€ 800 - 900

36

**Bruno Paul
Writing desk, 1904/05**

H. 77.5 cm, 149.5 x 80 cm. Made by United Workshops, Munich (ATTR.). Oak, partially ebonized; black leather, bronze fittings.

Cf. exh. cat. Bruno Paul, Munich Municipal Museum, Munich 1992, p. 141.

€ 2.000 - 3.000



35



36

37

Henry van de Velde Desk, c. 1908

Rectangular box shape with rounded corners, compartments with two doors and four drawers each, one shelf on the back. H. 77.5-85 x 215 x 96.5 cm. Made by H. Scheidemann, Weimar. Oak wood, brass fittings. Marked: Inside manufacturer's metal plaque with artist's signet.

Original design for Karl Ernst Osthaus' mansion Hohenhof.

Karl-Ernst Osthaus (1874-1921), who himself had studied philosophy and art history, was friends with many contemporary artists and architects. In his hometown of Hagen in what was then Prussia, he endeavored to create a counterpoint to Berlin, which dominated contemporary art. An artists' colony was to be created that could keep up with the existing ones in all areas. Reading the writings of the art critic Julius Meier-Gräfe, he became aware of the Belgian architect Henry van de Velde. From the very first personal meeting, it became clear that van de Velde was the right man to realize the interior design of the Folkwang Museum conceived by Osthaus, in which - as the first of its kind - contemporary art was to be exhibited. In 1902 the museum was opened in Hagen. Up until the First World War, Osthaus commissioned the Belgian with a number of projects. Along with the museum, the Osthaus family's home in the Hohenhof is still the most imposing building bearing witness to Velde's skills. He conceived it between 1906 and 1908 as a total work of art. Not only the building itself, but every detail, from the cutlery to the lighting to the cupboards of the interior design, stems from his pen.

Osthaus, Henry van de Velde, Hagen, reprint 1984, p. 66.

€ 28.000 - 35.000







38

**Henry van de Velde
Shelving cabinet, c. 1908**

Box shape rounded on one side with two doors, one board inside each, and three shelves. H. 152 x 142.5 x 59.5 cm. Made by H. Scheidemantel, Weimar. Oak wood, brass fittings. Marked: Inside manufacturer's metal plaque with artist's signet.

€ 12.000 - 14.000



39

**Henry van de Velde
Wardrobe, c. 1908**

Four-door, closed box construction with beveled corners. H. 218 x 232 x 70 cm. Maple wood, brass applications.

Van de Velde used the same model for Karl Ernst Osthaus' bedroom in Haus Hohenhof, Hagen.

Osthaus, Henry van de Velde, Hagen, Reprint 1984, p. 70.

€ 3.500 - 4.500



40

Bruno Paul

2 armchairs 'Villa Leonhardt, Landshut', 1909

H. 77 cm, 57 x 63 cm; H. 79 cm, 58 x 63 cm. Made by United workshops, Munich.
Wooden construction with mahogany veneer, partially carved, black leatherette.

Exh. cat. Bruno Paul, Munich Municipal Museum, Munich 1992, p. 190.

€ 4.000 - 8.000

41

Peter Behrens

Two electric kettles, 1909

H. 21 cm. Made by AEG, Berlin. Silver-plated brass, wood, painted black, raffia. Marked: manufacturer's marks 3591 96 or 42012 (embossed).

Bast slightly fragile in places.

Buddensieg/Rogge, Peter Behrens and AEG, Bonn 1980, D 191, P 134, P 135.

€ 700 - 900

42

Peter Behrens

Two electric kettles, 1909

H. 18.5-23.5 cm. Made by AEG, Berlin. Brass, partially copper-plated, wood, painted black, raffia. Marked: 3582 or manufacturer's mark 3604 A, 2 (embossed).

Smaller kettle without electric plug. Bast fragile in places.

Buddensieg/Rogge, Peter Behrens and AEG, Bonn 1980, D 191, P 134, P 135.

€ 800 - 900

43

Peter Behrens

Two electric kettles, 1909

H. 22-24 cm. Made by AEG, Berlin. Brass, wood, painted black, raffia. Marked: Manufacturer's mark 42017 or 70647 (embossed). One pommel loose, with crack; dents. One water kettle with electric cable.

Buddensieg/Rogge, Peter Behrens and AEG, Bonn 1980, D 191, P 135.

€ 700 - 900





44

Germany

Table with stool, 1920s

Table: H. 75.5 x 61 x 61 cm; Stool: H. 49 x 35 x 34.5 cm. Wooden construction, oak wood, blockboard with oak wood veneer, green and white checkered fabric. Marked: remains of a label.

€ 800 - 1.200

45

Olympia Büromaschinenwerke AG, Erfurt
'Europa' chair, 1920s

H. 82 x 56 x 57 cm. Beech wood, beech plywood, sheet metal, steel. Marked: manufacturer's metal plaque.

Issued by the Deutscher Werkbund in Paris in 1930; shown in the exhibition catalog with other seating furniture by Marcel Breuer, Ludwig Mies van der Rohe, Adolf Gustav Schneck and Anton Lorenz. Herbert Bayer designed the exhibition catalog.

Hoffmann/Grosskopf (Hrsg.), Bröhan 100, Berlin 2021, S. 251; Grassi Museum for Applied Arts (ed.), Bauhaus Sachsen, Leipzig 2019, p. 31.

€ 900 - 1.200





46

Hin Bredendieck; Hermann Gautel (ATTR.)

2 '777' pendant lights, um 1934

H. 133 cm (with suspension), Ø 30 cm. Made by Körting & Mathiesen A.-G., Leipzig-Leutzsch. Tubular metal, sheet metal, chrome-plated, transparent glass, matted, white glass. Marked: manufacturer's stamp.

Binroth et al., Bauhausleuchten? Kandemlicht!, Leipzig 2002, p. 197.

€ 1.800 - 2.200

47

**Arthur Rockhausen
Patent 'K 14' chair, c. 1925**

H. 79 x 62 x 60 cm. Made by Ernst Rockhausen Sons, Waldheim/Saxonia. Oak wood, plywood with oak veneer, stained dark. Marked: manufacturer's stamp.

Exh. cat. Patentmöbel von Rockhausen, Cologne, nd, np.

€ 900 - 1.000



48

**M. Brück
Tapestry, 1929**

213 x 122 cm. Polychrome wool, handwoven. Marked: 12 I/29/. M. Brück.

€ 1.500 - 2.000





49

Marcel Breuer
Table 'ti 9', 1924

H. 75 x 95 x 95 cm. Made at Bauhaus, Weimar. Wooden construction, oak slats, stained dark brown, blockboard with oak and mahogany veneer.

The table top can be used on both sides.

Cat. Bauhaus-Archiv Berlin. The Collection, Berlin 1987, p. 92; Wilk, Marcel Breuer. Furniture and Interiors, New York 1981, p. 31.

€ 18.000 - 22.000







50

Marcel Breuer

'ti 1a' wooden-slat chair, 1922-24

H. 96.5 x 56 x 62 cm. Made at Bauhaus, Weimar. Oak slats, stained dark brown, dark gray fabric.

Second version with wooden slats as legs instead of square timber. In this version, the two vertical wooden slats of the backrest are positioned outwards; this version (but still without supporting cross bracing) is shown in the publication of the Bauhaus Archive Berlin 'Bauhaus Chairs. From Experiment to Mass Production: '50 Chairs, easy chairs and stools', p. 11.

Cat. Bauhaus Archive Berlin. The Collection, Berlin 1987, p. 90.

€ 50.000 - 70.000



52

51

**Karl Trabert (ATTR.)
Floor lamp, 1928**

H. 178,5 cm, Ø 26 cm. Made by Schanzenbach & Co., Frankfurt/Main. Tubular brass, sheet brass, sheet metal, partly varnished brown, iron chain, paper shade, bakelite.

Cf. exh. cat. Tendenzen der 20er Jahre, Berlin 1977, p. 1/255 (designer's name not mentioned).

€ 2.200 - 3.000

52

**Hans Przyrembel; Wolfgang Tümpel
Bowl and ashtray, c. 1928**

12 x 9.2 cm; Ø 32.2 cm. Sheet brass, hammered and chased. Marked: joint signet PWT (engraved).

Bowl additionally marked: 2.12.1947 (engraved). Hans Przyrembel and Wolfgang Tümpel, former classmates at the Bauhaus, ran a joint workshop in Halle in 1928 until Tümpel moved to Cologne in the following year.

€ 1.500 - 2.000

53

**Marianne Brandt
Candlestick, 1929-32**

H. 7.8 cm. Made by Ruppelwerk, Gotha. Aluminum sheet, painted black, brass, partially painted red. Marked: RUPPEL geschützt.

€ 800 - 900



54

54

**Kurt Schmidt
Thonet loose leaf catalog, 1930**

Thonet (ed.), Thonet tubular steel furniture, Frankenberg/Eder 1930. 45 stock cards with designs by Bêwé, Marcel Breuer, Le Corbusier, Pierre Jeanneret and Charlotte Perriand as well as A. Guyot.

Worn.

€ 1.200 - 1.500

55

**Marguerite Friedlaender-Wilden-
hain**

Tea caddy 'Halle', 1930/31

H. 13.5 cm. Made by StPM Berlin. Porcelain, white, glazed, lid made of silver and cork. Marked: scepter (blue, under glaze), mark of Burg Giebichenstein (gray, under glaze). Lid marked: 925 (embossed).

Cf. Bröhan-Museum Berlin, Berliner Porzellan Vom Jugendstil zum Funktionalismus, Berlin 1997, p. 200.

€ 600 - 700



51



53



55



56

Josef Hartwig
Bauhaus - chess game 'XVI', 1924

32 figures. H. 2-4.5 cm. Made at Bauhaus, Weimar. Maple wood, partially stained dark

In the original wooden box (elmwood). H. 6 x 13.6 x 13.1 cm. Marked: HARTWIG GES.SCH. Included: game board for chess and checkers: 26.5 x 26.5 cm.

The chess set by Josef Hartwig is one of the most successful products designed at the Weimar Bauhaus. In 1922, the graduate of the Munich Academy, who worked from 1921 to 1925 as a foreman in the woodworking and sculpting workshops at the Weimar Bauhaus, began to design a chess game that differed fundamentally from traditional forms. Hartwig designed the game figures from simple stereometric bodies, from cubes, cylinders and spheres. Initially, the figures were made by hand, but the goal was industrial production. Hartwig himself explained the genesis of the forms in 1924: "Pawn and rook move at right angles to the edge of the board: expressed by the die. The knight moves perpendicularly in a hook shape on four squares: four dice combined perpendicularly. The bishop moves diagonally to the edge of the board: a diagonal cross cut out of the dice. The king moves perpendicularly and diagonally: a small cube across a corner on top of a larger one. The queen, the most mobile figure, consists of a cylinder and a sphere." (The Bauhaus chess game by Josef Hartwig, p. 8). Bauhaus-Archiv Berlin, The Bauhaus chess game by Josef Hartwig, Berlin 2006, p. 19; Hahn, Experiment Bauhaus, Dessau 1988, p. 401; Bauhaus Archive, cat., Berlin 1987, pp. 149-50, cat. no. 288; exh. cat. Bauhaus 7, Galerie am Sachsenplatz, Leipzig 1991, ill. p. 43, cat. no. 134

€ 8.000 - 9.000

Alfred Arndt**Folding chair 'Volkshaus Probstzella', 1927/28**

H. 93 x 40,5 x 60 cm. Made by Locksmith Itting, Propstzella 1927/28. Tubular steel, chrome-plated, plywood, stained black. Marked: inventory label of the municipality of Probstzella, numbering stamp 38.

There are only very few known samples of this rare folding chair in public collections and museums.

"Between 1926 and 1929, Alfred Arndt stayed mainly in Probstzella, Thuringia, where he managed the expansion of the "House of the People" on behalf of the entrepreneur Franz Itting. The interior of the building was designed by Arndt and other Bauhausers and partially made in the Dessau workshops. The lightweight folding chair was part of the inventory of the "Red Hall" in which dance evenings were held in addition to meetings and theater and cinema performances." www.bauhauskooperation.de/wissen/das-bauhaus/werke/tischlerei/klappstuhl/

Bauhaus Archiv Berlin, Der Bauhaus Meister Alfred Arndt, In der Vollendung liegt die Schönheit, Berlin 1999, Frontcover, p. 35; Hoffmann (ed.), Von Arts and Crafts zum bauhaus, Berlin 2019, p. 352; Exh. cat. bauhaus-möbel, Bauhaus-Archiv Berlin 2003 p. 245, p. 331.

€ 9.000 - 10.000



58

Marcel Breuer
Desk 'B 91', 1932

H. 68.5 x 106 x 49 cm. Tube Ø 2.4 cm. Made by Thonet, Frankenberg. Tubular steel, chrome-plated, wooden box construction, blockboard, with walnut veneer, stained dark.

Vege sack (ed.), Deutsche Stahlrohrmöbel, Munich 1986, p. 111, S. 119, S. 135.

€ 900 - 1.200



58

59

Marcel Breuer (STYLE)
Theater chairs with folding seats - row of five, 1931-33

H. 85 x 287 x 47/65 cm. Made by Thonet, Frankenberg. Tubular metal, chrome-plated, cast iron, partially blackened, wood, painted black, iron thread, green.

Iron thread probably renewed over the decades; very good condition. The row of seats is a further development of the theater chair with folding seat 'B1' by Marcel Breuer; This is probably a factory design/advancement by the Thonet company. In contrast to Marcel Breuer's original design, this row of seats has curved armrests, a closed bar on the backrest and cast-iron feet. The same row of seats (three seats) is in the Bauhaus Archive - Museum of Design in Berlin and is listed there under the inventory number 2010/4.1-3; another copy (a seat) is in the collection of the company Tecta, Lauenförde. Provenance: Andy Warhol Museum, Pittsburgh.

Cf. exh. cat. bauhaus-möbel, Bauhaus Archive Berlin 2003, p. 42.; ibid. p. 234 (Breuer's seating in the auditorium in the Bauhaus Dessau, 1926).

€ 5.000 - 6.000



59

60

Marcel Breuer
Chaise-Lounge '313', 1932-34

H. 73,5 x 59 x 134,5 cm. Made by Embru-Werke, Rütli for Wohnbedarf AG, Zurich. Profiled and sheet aluminum (Anticorodal), wood, stained dark.

One aluminum slot missing.

Cf. Wilk, Marcel Breuer, New York 1981, p. 122;
Lepel, Marcel Breuer: Aluminium, Embru-Werke,
Zürich 2017, n.p.

€ 10.000 - 15.000



61





62

61

**Klaus Grabe
2 chairs, c. 1950**

H. 82 x 45 x 53 cm. Made by Grabe Inc., New York. Ash plywood, green textile straps.
€ 3.200 - 3.800

62

**Klaus Grabe
Lounger 'C 5', 1948**

H. 66 x 55 x 163 cm. Made by Grabe Inc., New York. Ash plywood.

In his workshop, Grabe produced simple furniture in small editions; Influenced by his studies at the Bauhaus and his private contacts with Josef and Anni Albers as well as Hannes and Lena Meyer, with whom he lived in his exile in Mexico, he mostly designed easy-to-manufacture, simple furniture. After moving to New York, he was, like the Eameses, one of the first designers to use laminated wood in furniture construction after the Second World War. His designs, unlike those of Eames, are not very complex and were made directly by his company, Klaus Grabe Inc. Early version with remnants of a green version.

Hennessey, Modern Furnishings For The Home, Reprint, New York 1997, S. 227; vgl. LIFE Magazin 14. März, 1949, S. 110.

€ 3.000 - 3.500



63

Germany

Garden/sun lounger, 1930s

H. 67.5 - 70.5 x 69 x 182 - 192.5 cm. Beech wood, rattan weave, sheet metal, painted green, tubular metal.

Backrest adjustable and foldable in three positions.

Dimensions folded: H. 50 x 69 x 140 cm.

€ 1.000 - 1.200

64

Schwintzer & Graeff, Berlin

Ceiling light '3896', c. 1935

H. 125 cm, Ø 80 cm. Tubular metal, sheet metal, nickel-plated, clear glass.

€ 1.500 - 2.000



64



63

65

Netherlands

Children's shelving unit on castors, 1930s

H. 100 x 122.5 x 48.5 cm. Wooden box construction on castors, wood, blockboard, veneered, plywood, painted white, wheel hubs and handle orange-brown.

€ 1.200 - 1.800



65



66

66

**Elmar Berkovich
Desk, 1930s**

H. 75.5 x 110 x 65.5 cm. Made by Metz & Co., Rotterdam (ATTR.). Wooden box construction, blockboard and plywood, painted black, brass handle, nickel-plated.

€ 4.500 - 5.000

67

**Elmar Berkovich
Dressing table, 1930s**

H. 77 x 95 x 53 cm. Made by Metz & Co., Rotterdam (ATTR.). Wooden box construction, blockboard and plywood, painted white, handles made of cast aluminum or nickel-plated metal, mirror glass.

€ 4.000 - 4.500



67

68

**Jens Risom (ATTR.)
Armchair, c. 1948**

H. 72 x 62 x 83 cm. Made by Knoll International, New York or Walter Knoll, Herrenberg. Beech wood, Knoll-Antimott springs, red textile straps, red textile.

Interesting combination of the Knoll Antimott springs already used by Wilhelm Knoll, Stuttgart and the textile straps introduced by Knoll International New York and Walter Knoll, Herrenberg.

€ 1.500 - 1.800



70

**Kurt Feikel
Armchair 'TF 02', 1955**

H. 79 x 46 x 62 cm. Made by Thonet, Frankenberg. Tubular metal, chrome-plated, rattan weave. Marked: Manufacturer's metal plaque.

Vege sack, Deutsche Stahlrohrmöbel, Munich 1986, p. 156.

€ 500 - 600



69

69

**Hans Brockhage
Rocking chair/car, 1950**

H. 39 x 99.5 x 38 cm. Made by Siegfried Lenz, Bergiesshübel/Pirna. Beech and plywood, red wheels, rubber.

Car or rocking chair. The design had been conceived at the tutorial for toys held by Mart Stam at Hochschule für Bildende Künste in Dresden.

Exh. cat. Fidgety Philip! A Design History of Children's Furniture, Vienna 2006, p. 160, fig. 57; Höhne, Klassiker des DDR-Designs, Berlin 2001, p. 259.

€ 900 - 1.000



71

71

Wilhelm Wagenfeld

4 'Daphne' wall lights, 1952-54

H. 36 x 18 x 19.5 cm. Made by Peill & Putzler, Düren. Opal glass, white, metal mounting, painted white.

Manske/Scholz (eds.), *Täglich in der Hand*, Bremen 1994, p. 183; 320

€ 800 - 1.200

72

Egon Eiermann

Children's folding chair 'SE 76', 1954

H. 54 x 38 x 33.5 cm. Made by Wilde + Spieth, Esslingen. Beech wood, plywood, partly painted red.

Exh. cat. Egon Eiermann. *Die Möbel*, Badisches Landesmuseum Karlsruhe 1999, p. 151; Fig. p. 105.

€ 500 - 700

73

Egon Eiermann

'E 20' wicker chair, 1957

H. 65 x 89 x 64 cm. Made by Heinrich Murman, Johannisthal. Wickerwork, painted white.

Exh. cat. Egon Eiermann. *Die Möbel*, Badisches Landesmuseum Karlsruhe 1999, p. 130.

€ 700 - 800

74

Hans (Nick) Roehricht

'TC 100' stacking crockery, 1958/59

20 pieces. Jug, 4 cups with saucers, 4 dessert plates, 4 bowls, 4 egg cups, milk jug, sugar bowl, bowl. H. 4-15 cm; Ø 10-19 cm. Made by porcelain factory Thomas, Marktredwitz. Porcelain, white, glazed. Marked: manufacturer's mark.

For 4 persons.

€ 600 - 700



72



73



74

75

Friso Kramer

2 'Revolt' armchairs, 1954

H. 81 x 55 x 48.5 cm. Made by Ahrend Cirkel, The Hague. Sectional metal, painted black, plastic ('Ciranol'), gray. Marked: Manufacturer's labels.

Exh. cat. Holland in Vorm, Stedelijk Museum Amsterdam, The Hague 1987, p.160; Dosi Delfini/Van Dalen, The Furniture Collection, Stedelijk Museum, Amsterdam 2004, p. 219.

€ 800 - 900



75

76

Ferdinand Kramer

Table 'kd', c. 1953

H. 75 x 200 x 80 cm. Made by Otto Kind, Cologne, for the philosophical seminar at the Johann Wolfgang Goethe University in Frankfurt am Main, c. 1955. Oak wood, Douglas fir wood, chipboard with black linoleum, beech wood edging. Marked: Inventory stamp of the University of Frankfurt.

Designed as early as 1925 for a kindergarten in Frankfurt; was reissued for the 'kd' series and used in the Johann Wolfgang Goethe University in Frankfurt/Main. From the original interior of the University of Frankfurt.

Cf. Amt für industrielle Formgestaltung, Neues Bauen Neues Gestalten, Das Neue Frankfurt, Dresden 1984, p. 123 f.; Werkbund Hessen magazine, issue 01/ 2004; Die Vielfalt des Seriellen, Ferdinand Kramers Entwürfe für die Einrichtung der Frankfurter Universität; Hoffmann (Ed.), Bauhausstil oder Konstruktivismus, Ingolstadt 2008, p. 248; Breuer (Ed.), Kramer, Ferdinand Design für den variablen Gebrauch, Tübingen 2014, p. 298.

€ 2.000 - 3.000



76

77

Ferdinand Kramer

Daybed 'kd', c. 1953

H. 57 x 190 x 66 cm. Made by Otto Kind, Cologne, for the Johann Wolfgang Goethe University Frankfurt am Main, c. 1955. Wooden frame construction, beech wood, spring upholstery, dark gray textile cover; wedge pillow. Marked: Inventory label of the University of Frankfurt aM Inv. numbers.

Designed as early as 1928 for the Oberzennern department store; was reissued for the 'kd' series and used in the Johann Wolfgang Goethe University in Frankfurt/Main. Partially reupholstered, cover renewed.

Cf. Breuer (Ed.), Kramer, Ferdinand Design für den variablen Gebrauch, Tübingen 2014, p. 290 f., ibidem, p. 292; Breuer, Designgeschichte ausstellen, Wuppertal 2005, p. 44.

€ 1.800 - 2.200



77



78

**Carl Auböck
Coffee table, c. 1955**

H. 49 x 120 x 45 cm. Made by Workshop Carl Auböck, Vienna. Tree trunk section, walnut wood, solid, blackened underside, tubular brass, black rubber. Marked: Stamp MADE IN AUSTRIA 76.

€ 3.000 - 3.500

79

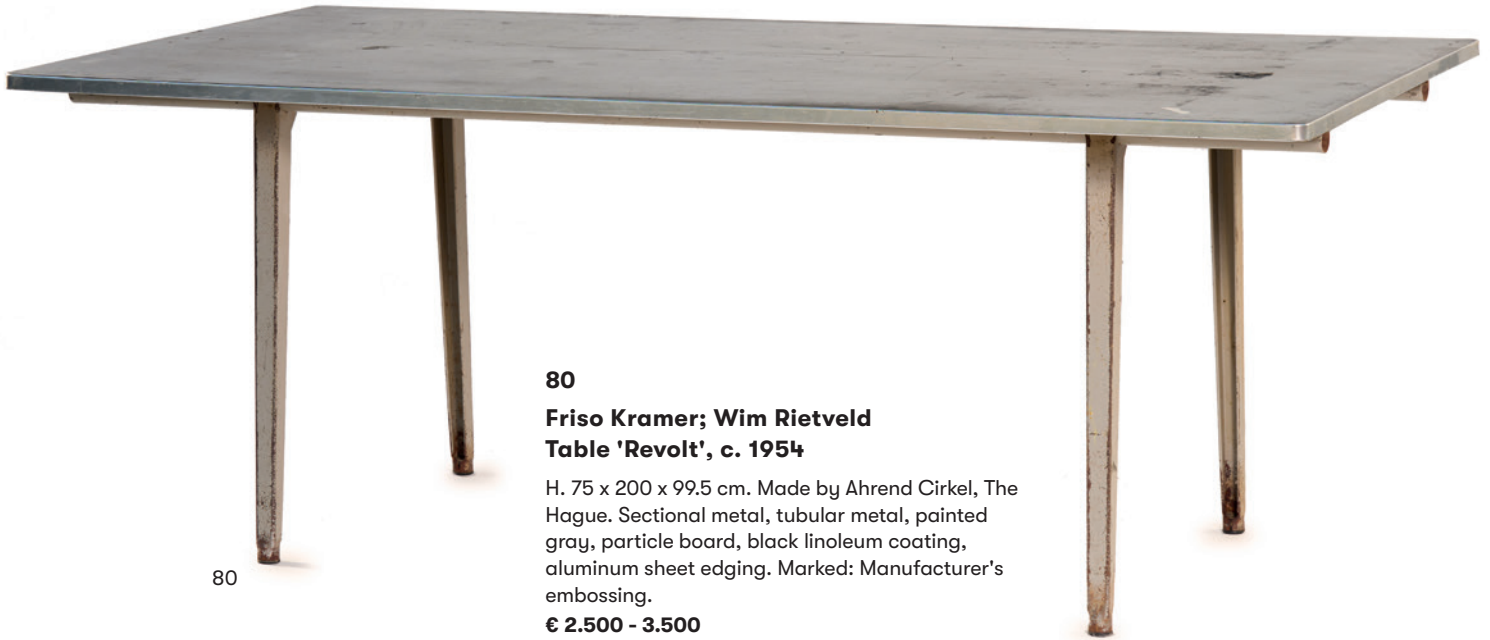
**Ferdinand Kramer
Shelving system, 1959**

H. 290 x 510 x 40 cm. Made by Ronninger Stahlbau, Hamm. Sectional metal, sheet metal, painted gray. 6 ladders, 30 shelves.

From the former institution of the University of Frankfurt. Cf. Breuer (Ed.), Kramer, Ferdinand Design für den variablen Gebrauch, Tübingen 2014, p. 334.

€ 3.000 - 5.000





80

80

**Friso Kramer; Wim Rietveld
Table 'Revolt', c. 1954**

H. 75 x 200 x 99.5 cm. Made by Ahrend Cirkel, The Hague. Sectional metal, tubular metal, painted gray, particle board, black linoleum coating, aluminum sheet edging. Marked: Manufacturer's embossing.

€ 2.500 - 3.500



81

81

Friso Kramer

8 chairs 'Result', 1958

H. 80 x 45 x 46.5 cm. Made by Ahrend Cirkel, The Hague. Sectional metal, painted gray, plywood with beech veneer.

Sembach, *Neue Möbel*, Stuttgart 1982, p. 60; Vöge/Westerveld, *Stoelen*, Nederlandse Ontwerpen 1945-1985, Amsterdam 1986, p. 104; Exh. cat. *Holland in Vorm*, Stedelijk Museum Amsterdam, s'Gravenhage 1987, p. 160.

€ 2.200 - 3.000

82

Everest Furniture, Netherlands
Dressing table/desk, 1950s

H. 87.5 x 93.5 x 60 cm. Wooden box construction with beechwood veneer, partly painted red, inside teakwood veneer, beechwood, walnut handle, mirror glass.

€ 1.200 - 1.500

83

Egon Eiermann

3 nesting tables, 1960s

H. 50-55.5 x 44-53.5 x 28.5-33 cm. Made by Wilde & Spieth, Esslingen (ATTR.). Elmwood, green, blue and black formica.

The tables are presumed to be coming from the former house of the representatives of the German Bundestag ('Long Eugen'), designed by Egon Eiermann 1965-68.

€ 2.000 - 2.500



82



83

84

Armin Wirth

12 'Aluflex' folding chairs, 1951

H. 83 x 49,5 x 50,5 cm. Made by Philip Zieringer Metallwerke, Switzerland. Aluminum frame, plywood, painted black. Marked: manufacturer's badge.

This chair only weighs c. 3 kg. The frame of the chair is made of tubular aluminum and shaped in a manner that does not require soldering. Seat and back are of very thin but sustainable air-ply. By lifting the seat, lots of chairs can be fit into each other and stored in a space-saving manner.

Exh. cat. Schweizer Möbeldesign 1927 - 1984, Museum für Gestaltung Zurich, Zurich 1986, p. 83; Sembach, Neue Möbel, Stuttgart 1982, p. 64; Zwicky (Ed.), Schweizer Möbellexikon, Zurich 2005, p. 50.

€ 800 - 1.200



84

85

Herbert Hirche

Coffee table, 1953

H. 30.5 cm, Ø 115 cm. Made by Christian Holzapfel KG, Ebhausen. Tubular metal, chrome-plated, clear glass.

Hirche/Godel, Herbert Hirche, Stuttgart 1993, p. 12.

€ 3.000 - 4.000



85

86

Paul Schneider von Esleben

Coffee table, c. 1956

H. 47 x 114 x 49 cm. Tubular metal, chrome-plated, clear glass, steel balls, blackened.

Design for the lobby of the Mannesmann high-rise building in Düsseldorf (1952-56).

von Esleben (ed.), Paul Schneider von Esleben, Entwürfe und Bauten, Stuttgart 1996, p. 79.

€ 2.200 - 3.000



86

87

**Günter Beltzig
'Floris' table, 1967/68**

H. 61.5 cm, Ø 77.5 cm. Made by BBD, Brothers Beltzig Design, Wuppertal. White fiberglass reinforced polyester.

With the Floris chair, Günter Beltzig walked a fine line between everyday object and sculpture. The iconic chair is reminiscent of both a human figure and a pistil while at the same time enabling ergonomic sitting. The 'Floris' table offered here was only produced in a very limited edition.

Exh. cat. Experiment 70, Ingolstadt 2002, p. 26.

€ 2.200 - 2.500



87

88

Gio Ponti

Highback chair, c. 1939

H. 103 x 43 x 46 cm. Walnut, reedwork.

€ 1.500 - 1.800

89

Carlo Enrico Rava

2 console tables, c. 1950

H. 94.5 x 129 x 25 cm. Wood, stained dark and painted clear, cream-white marble top.

From the Hotel Trinacria, Palermo.

€ 3.200 - 4.000

90

Aldo Tura

Serving trolley, 1950s

H. 79 x 80 x 42 - 81 cm. Made by Tura, Milan. Wooden construction, goatskin, dyed red and varnished clear, wood, turned and stained dark, brass castors.

€ 700 - 800



88



89





91

91

**Gino Sarfatti
Floor lamp '1035', 1948**

H. 215 cm, Ø approx. 95 cm. Made by Arteluce, Milan. Tubular brass, sheet brass, partially painted cream-white, sand-colored marble, sheet aluminum, painted cream-white.

13 illuminants.

Romanelli / Severi, Gino Sarfatti, Milan 2012, p. 153, p. 446.

€ 3.000 - 3.500

92

**Carlo De Carli
'180' dining table, 1963**

H. 76 cm, Ø 125 cm. Made by Sormani, Arosio. Wood, stained dark brown and laquered clear, block board with teak veneer, sheet brass.

€ 4.000 - 5.000



92



93

93

**Piero Fornasetti
'Musicale' chair, 1950s**

H. 96 x 42 x 52 cm. Made by Fornasetti, Milan, 1990s. Plywood, painted cream-white with black lithographic decor, wood, painted black. Marked: manufacturer's label.

Fornasetti (Ed.), Fornasetti, The Complete Universe, Milan 2021, p. 402.

€ 2.200 - 3.000



94

95

**Piero Fornasetti
'Sole' chair, 1950s**

H. 95 x 41 x 56 cm. Made by Fornasetti, Milan, 1991. Plywood, printed sun motif, tubular metal, varnished black. Marked: manufacturer's label, manufacturer's mark (partially hidden through the restoration), N2 DI 30-91-SS.

Backrest professionally restored.

Fornasetti (Ed.), Fornasetti, The Complete Universe, Milan 2021, p. 398 f.

€ 900 - 1.200

94

**Piero Fornasetti
'Capitello Corinzio' chair, 1950s**

H. 93 x 41 x 53.5 cm. Made by Fornasetti, Milan, 1990s. Plywood, painted cream-white with black lithographic decor or painted black, tubular metal, varnished black. Marked: manufacturer's label.

Fornasetti (Ed.), Fornasetti, The Complete Universe, Milan 2021, p. 400.

€ 1.800 - 2.500



95

96



96

Piero Fornasetti
12 plates 'Eva', 1954

Ø 26 cm. Made by Fornasetti, Milan, 1950/60s. Porcelain, white, glazed, black overglaze. Marked: ALTO HAUT TOP, EVA, manufacturer's mark.

Mauriès, Fornasetti, London 1991, p. 238f.

€ 1.800 - 2.500

97

Wifredo Lam
Bowls, bowls and plates, 1970

38 pieces: 1 grill plate 39.2 x 30 cm, 1 salad bowl H. 18.5 cm, Ø 24.5 cm, 1 soup bowl H. 21 cm, Ø 25.5 cm, 2 serving plates Ø 32 cm, 11 dinner plates Ø 24.5 cm, 11 deep plates Ø 22.8 cm, 11 dessert plates Ø 19.5 cm. Made by Heinrich & Co., Selb; FAC / ACF Albisola Ceramiche, Albisola. Porcelain, white, polychrome glaze, black serigraphy. Marked: manufacturer's mark, artist's facsimile signature, 30 - 100 (gilded).

Each number 30 from a limited edition of 100 copies.

€ 10.000 - 12.000



97



98

Gio Ponti

Huge console table / counter, c. 1950

H. 80.5 x 300 x 89.5 cm. Wooden box construction, beech wood, plywood, block board with red linoleum, sheet brass. Marked: metal plaque AMMINISTRAZIONE PROVINCIALE FORLI NUMERO D'INVENTARIO A 37.

Designed for the public administration offices, Forli province. Cf. Chiarezzi, unità, visibilità totale negli uffici modernissimi, Domus, no. 270, May 1952, p. 21.

€ 9.000 - 12.000







99

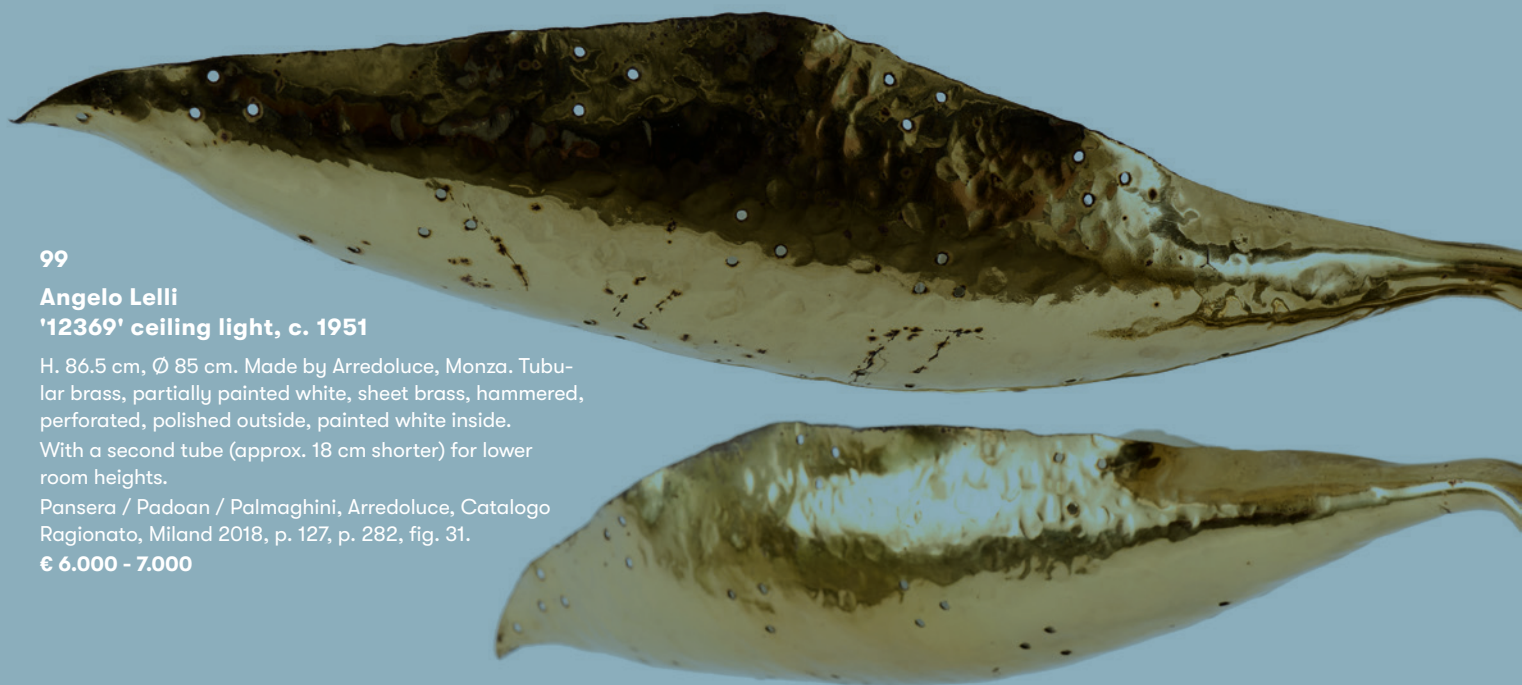
Angelo Lelli
'12369' ceiling light, c. 1951

H. 86.5 cm, Ø 85 cm. Made by Arredoluce, Monza. Tubular brass, partially painted white, sheet brass, hammered, perforated, polished outside, painted white inside.

With a second tube (approx. 18 cm shorter) for lower room heights.

Pansera / Padoan / Palmaghini, Arredoluce, Catalogo Ragionato, Miland 2018, p. 127, p. 282, fig. 31.

€ 6.000 - 7.000



100

**Tommaso Barbi
Coffee table, c. 1960**

H. 47 x 81 x 81 cm. Made by Tommaso Barbi, Rome. Tubular metal, earthenware, glazed white, slightly iridescent, sheet brass, bronzed plate glass. Marked: manufacturer's label.

€ 2.000 - 2.500



100

101

**Roberto Pamio
'Aghia' table light, c. 1970**

H. 48 cm. Made by Leucos, Milan. Tubular metal, sheet metal, painted black, cased glass, opalescent, white and colorless. With dimmer.

€ 2.400 - 2.800



101

102

Archizoom Associati

'Safari' modular seating, 1967

H. 69 x 265 x 214 cm. Made by Poltronova, Pistoia. Polyester, reinforced with fiberglass, painted white, white textile cover.

This seat object was shown at the 'Italy: The New Domestic Landscape' exhibition, 1972 in the New York Museum of Modern Art (MOMA).

Re-painted, new upholstery.

Bangert, Italian Furniture Design, Munich 1988, p. 110 f.; Greenberg, Op to Pop, Boston 1999, p. 31.

€ 10.000 - 12.000





103

Ettore Sottsass

'Scalino Gradino' - '848' vase, 1958

H. 36.5 cm. Made by Bitossi, Montelupo, after 1984. Earthenware, glazed white and green. Marked: E. SOTTASS BITOSSI MONTELUPO (black, handwritten).

Ferrari, Sottsass 1000 Ceramics, Turin 2017, p. 161 (called 'Vaso').

€ 600 - 800



103



104

104

Ettore Sottsass

'Rocchetto' vase, 1986

H. 45 cm. Made by Bitossi, Montelupo. Earthenware, glazed white and black. Marked: E. SOTTASS BITOSSI MONTELUPO (black, handwritten).

Ferrari, Sottsass 1000 Ceramics, Turin 2017, p. 161; Ferrari, Sottsass: Tutta la ceramica, Mailand 1995, p. 186.

€ 900 - 1.200

105

Ettore Sottsass

'Calice' vase, c. 1986

H. 47 cm. Made by Bitossi, Montelupo. Earthenware, glazed white and black. Marked: E. Sottsass Bitossi Montelupo (handwritten, black).

Ferrari, Sottsass 1000 Ceramics, Turin 2017, p. 161.

€ 900 - 1.200



105

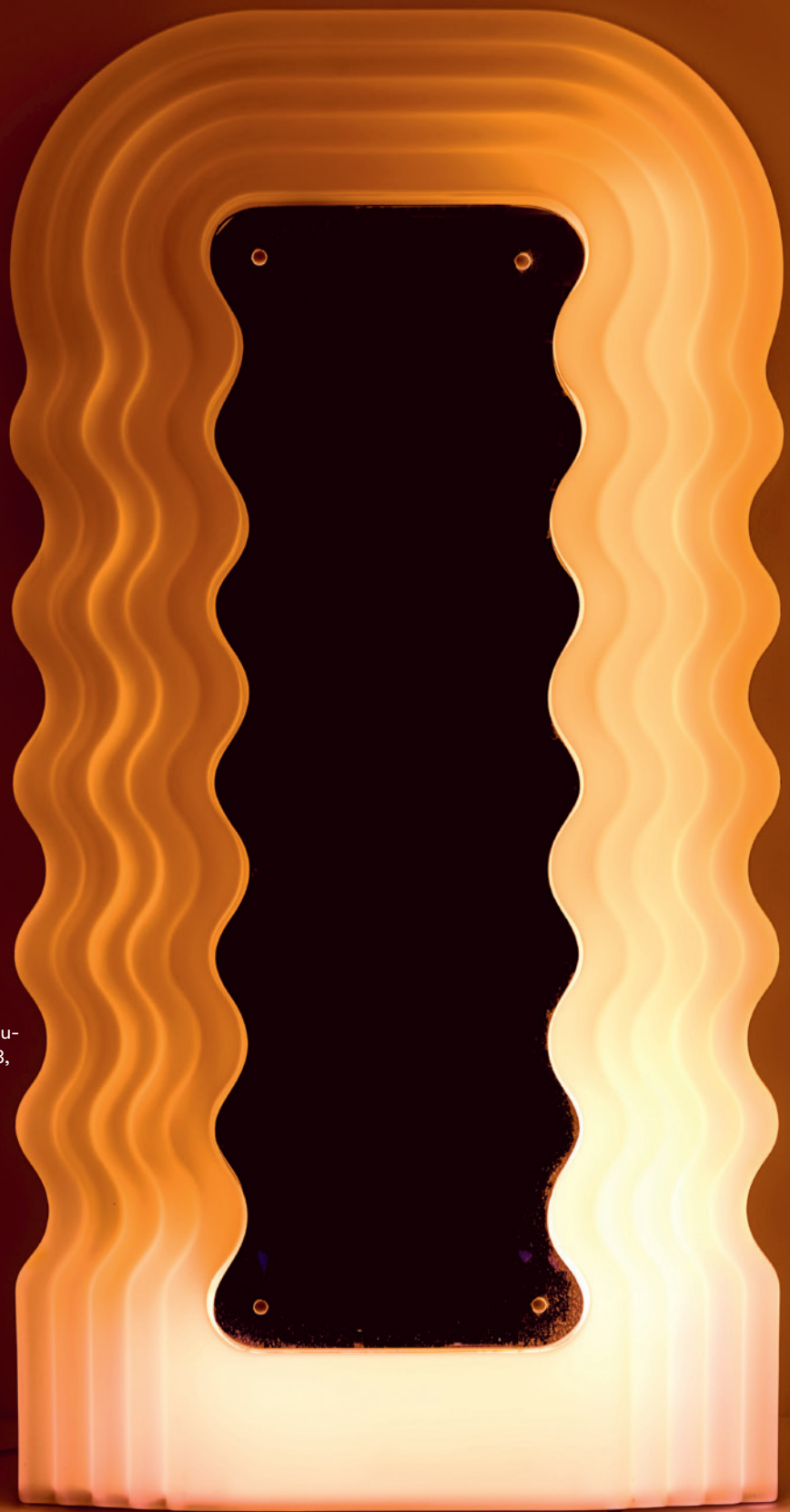
106

Ettore Sottsass
'Ultrafragola' mirror, 1970

H. 195 x 101 x 14.5 cm. Made by
Poltronova, Pistoia. White plastic,
mirror glass.

Radice (ed.), Ettore Sottsass, Munich
1993, p. 135; Exh. cat. L'Utopie Du Tout
Plastique, Brussels 1994, p. 92; Bony, Me-
ubles et décors des années 60, Paris 2003,
p. 190.

€ 6.000 - 7.000





107

**Le Corbusier; Charlotte Perriand
'Armée du Salut' table, 1929**

H. 75 x 111 x 66,5 cm; tubular steel Ø 3,5 and 2,5 cm. Tubular steel, wood, painted blue-gray, orange linoleum.

Made for the 'Cité de Refuge' building on rue Cantagrel for the Salvation Army in Paris.

Boesiger, Le Corbusier and Pierre Jeanneret oeuvre complète, Zurich 1935, p. 106 ff.

€ 15.000 - 18.000





108

108

Le Corbusier

'Unité d'Habitation de Marseille' wardrobe, c. 1949

H. 156 x 104,5 x 58 cm. Made by Charles Barberis, Menuiseries modernes, Les Salinas, Ajaccio. Wooden construction, wood and plywood, painted mustard-yellow on gray wooden base, oak handles, metal rod.

Sbriglio (Ed.), L'Unité d'Habitation de Marseille, Marseille 1992, p. 79/82; Rüegg, Le Corbusier Möbel und Interieurs, Zurich 2012, p. 326.

€ 6.000 - 7.000

109

Raoul Guys (ATTR.)

Wicker armchair, 1950s

H. 79 x 58 x 67 cm. Tubular metal, painted black, rattan weave.

€ 2.500 - 3.000



109





110

Jean Prouvé
'Flavigny' table, 1942

H. 73.5 x 187 x 87 cm. Made by Atelier Jean Prouvé, Maxeville. Sheet metal, tubular metal, varnished black, oak wood.

Provenance: South German private collection, acquired in the early 2000s from Galerie Stefan Vogdt, Munich.

Vege sack, Jean Prouvé: The Poetics of the Technical Object, Milan 2007, p. 312.

€ 25.000 - 35.000



111

111

**Jean Boris Lacroix
'316' table light, c. 1955**

H. 32 x 14,5 x 15,5 cm. Made by Luminale, Paris. Sheet metal, painted black and white, acrylic glass, white and yellow.
Homo (ed.), La Côte du design, no. 6, 2013/2014, Rouen 2012, p. 247.
€ 2.000 - 2.500

112

**Pierre Chapo
Table 'T14C', around 1960**

H. 73.5 x 183 x 85 cm; Plate thickness: 5 cm. Made by Studio Pierre Chapo, Gordes. Elm wood, solid.
Markanto.de (ed.), cat. Pierre Chapo, THE WOODWORKER, Cologne 2013, n.p.
€ 5.000 - 7.000



112

113

Charlotte Perriand
8 'CP-1' wall light, 1963

H. 17.5 x 12.5 x 6.9 cm. Made by Steph Simon, Paris (originally); SCE, France. Sheet metal, painted black and white. Marked: manufacturer's label.

Barsac, Charlotte Perriand, Vol. 3, Paris 2013, p. 106; Exhib.-cat. Charlotte Perriand, CGP, Paris 2005, p. 155.

€ 3.500 - 4.000



113



115

114

Pierre Chapo
'T-21' dining table, 1972

H. 75.5 cm, Ø 97 cm. Made by Chapo Gordes, Gordes. Oak wood. Marked: manufacturer's brand stamp.

Cf. Markanto.de (ed.), cat. Pierre Chapo, THE WOODWORKER, Cologne 2013, n.p.

€ 3.000 - 3.500

115

Max Sauze
3 table lights, c. 1970

H. 19 x 16 x 16 cm. Made by Robert Weil, Aix-en-Provence. Metal wire, aluminum lamellae.

€ 800 - 900



114



116

116

Otto Schulz

Two armchairs, 1930s

H. 71 x 70 x 63 cm. Made by Boet, Gothenburg (ATTR.). Oak wood, painted black, cream-colored textile cover (velours).

Professionally reupholstered and covered.

€ 5.500 - 7.000

117

Bruno Mathsson

'Vilstol Nr 1' or '36' lounge chair, 1933/34

H. 75 x 51.5 x 108 cm. Made by Karl Mathsson, Värnamo. Beechwood, beech plywood, gray leather.

The lounge chair was presented in Mathsson's first solo-exhibition, 1936 at the 'Röhsska' Museum of Applied Arts, in Gothenburg, Sweden; 1937 it was exhibited at the 'Exposition International' in Paris and in 1939 at the 'International Exposition Golden Gate' in San Francisco.

This example has been professionally restored with new strapping in natural un-dyed, untreated leather.

Boman et al., Svenska Möbler, Kristianstad 1991, p. 177; Gordan, Svenska Stolar, Stockholm 2002, p. 82f.

€ 3.500 - 4.500



117

118



118

Alvar Aalto

Outdoor 'Expo 37' light, c. 1937

L. 78 cm, Ø 39.5 cm. Made by Taito Oy, Helsinki (attr.). Tubular metal, sheet metal, painted white and black.

Originally used for the Finnish pavilion at the 1937 World Exhibition in Paris. The luminaires were simply anchored to the ground in front of the building.

Alvar Aalto Society, Bulletin 31, Winter 2011, Cover.

€ 4.000 - 5.000



119

119

Finland

Serving trolley, 1930s

H. 59.5 x 79.5 x 53 cm. Tubular steel, chrome-plated, clear glass, black rubber.

€ 1.000 - 1.500

120

Alvar Aalto

'L-Leg' desk with '296' mobile drawer, 1933

Table: H. 71 x 120 x 62 cm; Drawer: H. 66.5 x 38.5 x 70.5 cm. Made by Huonekalu-ja Rakennustyötehdas Oy, Turku für Artek, Helsinki. Birchwood, Birch plywood; green-gray formica.

Drawer and table have been professionally restored.

Exh. cat. Alvar Aalto Möbel, Museums des Mobiliendepots, Vienna 2002, p. 32, p. 41.

€ 1.800 - 2.200

120





121

121

**Gustaf Axel Berg
'Torparen' bench, c. 1942**

H. 86 x 113 x 52 cm. Made by Väsby Möbel- och Inredningsfabrik, Upplands Väsby. Bent plywood, hemp straps. Marked: signed G. A. Berg (stamp).

Boman et al, Svenska Möbler, Kristianstad 1991, p. 267; Gordan, Svenska Stolar, Stockholm 2002, p. 116.

€ 700 - 900

122

**Vilhelm Lauritzen
Table lamp, c. 1948**

H. 49 cm, Ø 20 cm. Made by Louis Poulsen, Copenhagen. Tubular brass, sheet brass, teak, shade painted white on the inside.

€ 2.000 - 3.000

123

**Hans J. Wegner
Seat 'PP 589', 1953 / 1990s**

H. 39 x 162 x 52 cm. Made by PP Møbler, Copenhagen, 1990s. Ash wood, solid. Marked: brand stamp PP Møbler Danmark Design Hans J. Wegner

Originally designed by Hans J. Wegner for the reception area of his own house. This example (1990s version) comes from the original furnishing of Wegner's house in Gentofte.

€ 3.200 - 4.000



122



123



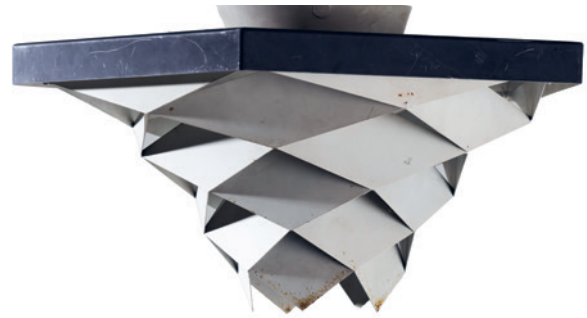
124

124

**Preben Dahl
Two 'Symfoni' ceiling lights, 1956**

H. 30 (without suspension) x 30 x 34 cm.
Made by Hans Folsgaard, Denmark. Sheet
metal, painted white and black.

€ 2.000 - 2.200



125

125

**Preben Dahl
'Symfoni' ceiling light, 1956**

H. 23 cm, Ø 42 cm. Made by Hans Fols-
gaard, Denmark. Sheet metal, painted
white and black. Marked: sticker 'Made in
Denmark'.

€ 1.000 - 1.200

126

**Yngve Ekström
2 'Arka' armchairs, 1955**

H. 65 x 72 x 56 cm. Made by Stolfabriks AB,
Smalandsstenar. Oak wood, brown leather.

Rare samples with leather cushions.

Berglund/Engdal, Möbelrad, Uppsala 1961,
p. 38; Gordan, Svenska Stolar, Stockholm
2002, p. 165.

€ 2.000 - 2.200



126



127

127

Arne Jacobsen

Two 'Swan' armchairs, 1957/58

H. 75 x 74 x 69 cm. Made by Fritz Hansen, Copenhagen, 1963. Cast aluminum, black leather. Marked: manufacturer's label.

Newly upholstered in 'Canyon' leather from Arne Sørensen, Denmark.

Thau/Vindum, Arne Jacobsen, Copenhagen 2001, p. 469.

€ 6.000 - 7.000



128

Poul Kjaerholm

'PK 61' coffee table, 1955

H. 32 x 80 x 80 cm. Made by Fritz Hansen, Copenhagen, 2017. Strip steel, anthracite-gray, (Petra) marble, dark gray. Marked: manufacturer and number stamps, manufacturer's label.

From a limited re-edition for the 60th anniversary of Fritz Hansen. With original certificate.

Harlang/Helmer-Petersen/Kjaerholm, Poul Kjaerholm, Copenhagen 1999, p. 86, 87.

€ 3.000 - 4.000



128

129

Poul Kjaerholm

Three-legged chair 'Aluminum Chair', 1953 / 2010

H. 65 x 63 x 64 cm. Made by Sean Kelly; Gallery R 20TH Century, New York.

Cast aluminum, painted yellow and gray, tubular metal, painted black. Marked: Manufacturer's plaque Sean Kelly R 20TH Century, New York Poul Kjaerholm ALU - 53 4 / 25 sales label with date 07/12/2016 and signature.

Number 4 from an edition limited to 25 pieces. Arkitektens Forlag (ed.), Poul Kjaerholm, Copenhagen 1999, p. 174.

€ 8.000 - 12.000



130

**Henry W. Klein
Lounge chair, 1950s**

H. 101 x 122 x 74 cm. Made by N.A. Jørgensen, Møbelfabrik, Denmark (Bramin). Oak frame, black leather.

€ 2.200 - 3.000



130

131

**Carl Fagerlund
Two wall lights, 1960s**

H. 26 x 18 cm. Made by Orrefors Glasbruk, Orrefors. Sheet brass, clear glass.

€ 600 - 800



131

132

**Poul Hundevad
Klapphocker 'Guldhøj', 1956**

H. 37 x 48 x 38 cm. Made by Poul Hundevad, Vamdrup. Oak wood, cognac-colored leather.

Hansen/Petersen, Den Store Danske Møbelguide, n.p. 2005, p. 25.

€ 700 - 800



132



133

Bent Karlby
2 'Governor' table lights, 1956

H. 46 cm, Ø 40 cm. Made by Lyfa, Ballerup.
Tubular brass, sheet brass, teak.

€ 3.200 - 4.000



133

134

Carl Malmsten
Two 'Samsas' sofas, 1960

H. 86 x 184 x 80 cm. Made by O.H. Sjogren, Tranås.
Birch wood, gray textile.

Newly upholstered and covered.

€ 3.000 - 5.000



134



135

135

Kurt Östervig

Three nesting tables, c. 1960

H. 41-47 x 50-60 x 37-40 cm. Made by Jason Möbler, Ringsted. Oak wood, oak plywood, black formica. Marked: manufacturer's stamp, Made in Denmark stamp, branding stamp.

€ 800 - 1.200

136

Børge Mogensen

Two armchairs, four 'BM62' chairs, 1957

H. 75 x 48-61 x 49.5 cm. Made by P. Lauritsen & Son, Aalstrup. Oak wood, rattan weave.

Cf. Hansen/Petersen, Den Store Danske Møbelguide, n.p. 2005, p. 244; Müller (Ed.) Børge Mogensen Möbel mit Format, Berlin 2016, p. 120.

€ 4.000 - 5.000

137

Lisa Johansson-Pape

Two table lamps, 1960s

H. 49.5 cm; Stand: 33 x 9 x 9 cm. Made by Illums Bolighus, Copenhagen. Sheet metal covered with cognac-colored leather, white textile shades.

Shades renewed.

€ 2.000 - 2.500



137



136



138

138

Illum Wikkelsø

Lounge chair 'ML 214' with ottoman, 1960s

Armchair: H. 89 x 88 x 85 cm; Stool: H. 36 cm, Ø 60 cm.
Made by Mikael Laursen, Denmark. Tubular metal, sheet metal, chrome-plated, black leather.

€ 2.500 - 3.500

139

Eero Aarnio

'Kantarelli' table, 1967

H. 44 cm, Ø 71 cm. Made by Asko Oy, Helsinki.
Fiberglass reinforced polyester, orange.

Hai, Eero Aarnio, Nanjing 2013, p. 66; Garner, Sixties Design, Cologne 1996, p. 112.

€ 1.200 - 1.500



139







140

Arne Jacobsen

Kitchen from an Interbau bungalow for the International Building Exhibition in Berlin, around 1957

Sink cabinet: H. 55 x 275.5 x 61 cm; Upper cabinet: H. 55 x 275 x 50 cm; Base cabinet: H. 55 x 230 x 61 cm; Stove: H. 55 x 47 x 61 cm; Sideboard: H. 41.5 x 164 x 42.5 cm; Table: H. 77 x 161.5 x 70 cm; Chairs: H. 78 x 51 x 52 cm. Made by Fritz Hansen, Copenhagen (chairs and table), sideboard (?), kitchen (?). Wooden box construction, wood, plywood, Pavatex, painted light blue, sheet metal, tubular metal, partially painted blue; Sideboard, table and chairs: teak, blockboard and plywood with teak veneer, chromed tubular metal.

Also included: two chairs 'Ant - 3100', 1952. Thau / Vindum, Arne Jacobsen, Copenhagen 2001, p. 408.

€ 12.000 - 15.000



141

141

Isamu Noguchi

'Akari'-'33N' floor light, 1950

H. 200 cm. Made by Ozeki & Co. Ltd., Gifu. Metal wire, painted black, paper shade.

Marked: Noguchi facsimile signature, sun, moon (stamp), manufacturer's label.

The floor lamp comes with two paper shades; the old original shade and a relatively new second shade and one original box. With manufacturer's booklet.

€ 4.000 - 4.500

142

George Nelson

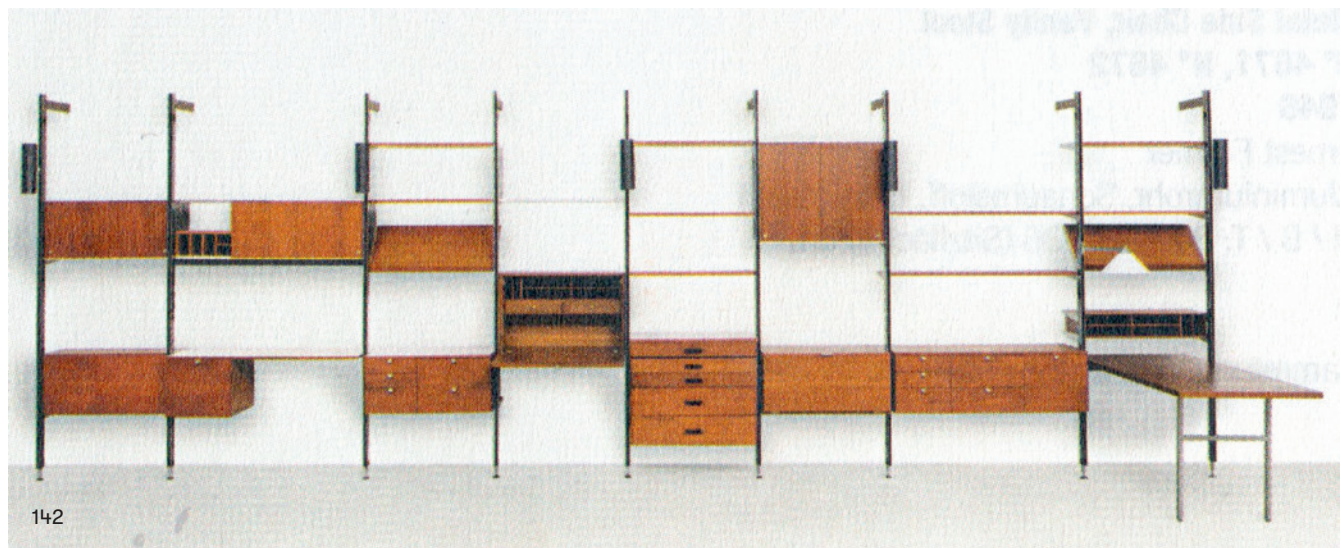
'Comprehensive Storage System - CSS', 1957

13 elements: 4 supports: H. approx. 250 cm; 3 boxes: h. 50.5 x 86 x 47.5 cm, 6 shelves: h. 5.5 x 86 x 32 cm. Made by Herman Miller, Zeeland. Wooden box construction, block board with walnut veneer, partially laminated with white plastic, aluminum sheet, aluminum profiles, painted black.

Boxes with hinged doors. Significant signs of use. The image is for illustrative purposes only.

Exh. cat. George Nelson, Weil/Rhine 2008, p. 245.

€ 2.200 - 2.800



142



143

George Nelson

'Modular Seating' sofa with shelves and two '5751' coffee tables, 1955

Sofa: H. 69 x 227 or 420 x 77 cm, tables: H. 38 x 122 x 69 cm each. Made by Herman Miller, Zeeland. Sofa: square metal tube, chrome-plated, metal profiles, painted black, chipboard with white plastic laminate, brown textile cover; Tables: square metal tube, chromed, plywood with white plastic laminate, walnut veneer.

Provenance: South German private property; family-owned since the early 1970s.

Vege sack (ed.), George Nelson, Weil/Rhine 2008, p. 267.

€ 8.000 - 9.000

144

Charles and Ray Eames

'Plastic Armchair' on 'Eiffel Tower' base, 1950-53

H. 80 x 65 x 64 cm. Made by Herman Miller, Zeeland. Fiberglass reinforced polyester shell, beige, tubular metal, chromed, black rubber. Marked: manufacturer's embossing.

Neuhart, Eames design, New York 1994, S. 139f.

€ 900 - 1.200

145

George Nelson

'Action Office 1 - Rolltop' desk, 1960

H. 82.5 x 163 x 81.5 cm. Made by Herman Miller, Zeeland. Cast aluminum, chrome-plated, plywood, chipboard, painted gray-black, plastic laminate, white, walnut slats, walnut veneer, plastic, khaki green.

Pina, classic herman miller, Atglen 1998, p. 114; Sembach, Neue Möbel, Stuttgart 1982, p. 214; Vegesack (ed.), George Nelson, Weil/Rhine 2008, p. 274.

€ 2.200 - 2.800



146

George Nakashima
Barhocker 'High Four-Legged Chair', um 1950

H. 86 x 47 x 51 cm. Made by Nakashima Studios, New Hope, PA, 1983. American walnut. Marked: Sept. 83, Full circle. Nakashima, Nature Form & Spirit. The Life and Legacy of George Nakashima, New York 2003, S. 72.

€ 2.200 - 3.000



147

Harry Bertoia
'426' children's chair, 1952

H. 59.5 x 40 x 43 cm. Made by Knoll International, New York. Metal rods, painted black and white, red synthetic leather. Marked: manufacturer's label.

Rouland, Knoll Furniture, Atglen 1999, p. 60.

€ 400 - 500



147

148

Harry Bertoia
Two '426' children's chairs, 1952

H. 61 x 40 x 41 cm. Made by Knoll International, New York. Metal rods, painted black and white, orange-brown synthetic leather. Marked: manufacturer's sticker.

Rouland, Knoll Furniture, Atglen 1999, p. 60.

€ 700 - 1.000



148



149



150



151



152

149

**Ingo Maurer
'ML 32' table light, 1960s**

H. 30 cm, Ø 20 cm. Made by Design M Ingo Maurer, München. Glas, orange.
Bauer (ed.), Ingo Maurer Making Light, Munich 1992, p. 28.

€ 450 - 500

150

**Ingo Maurer
'Bulb Clear'/'Bulb Opal' table light, 1966**

H. 30 cm, Ø 20 cm. Made by Design M Ingo Maurer, Munich. Sheet metal, chrome-plated, colorless and white glass.
Two glass shades are included in the lot. These can be swapped out at will.
Bauer (ed.), Ingo Maurer Making Light, Munich 1992, p. 27f, p. 248.

€ 500 - 550

151

**Ingo Maurer
'Bulb Opal' table light, 1966**

H. 30 cm, Ø 20 cm. Made by Design M Ingo Maurer, Munich. Sheet metal, painted yellow, white glass.
Bauer (ed.), Ingo Maurer Making Light, Munich 1992, p. 28, p. 248.

€ 500 - 550

152

**Ingo Maurer
'Giant Bulb Opal' table light, 1966**

H. 53.5 cm, Ø 33 cm. Made by Design M, Ingo Maurer, Munich. Sheet metal, chrome-plated, white glass. Marked: manufacturer's label.
Can also be used as a floor lamp.
Bauer (ed.), Ingo Maurer Making Light, Munich 1992, p. 28, p. 248.

€ 1.500 - 1.800



154



155



156



158

153

**Ingo Maurer
'Pollux' table light, 1967**

H. 12.5 cm, Ø 7 cm. Made by Design M, Ingo Maurer, Munich. Tubular metal, sheet metal, chrome-plated.

Can also be used as a wall lamp.

Bauer (ed.), Ingo Maurer Making Light, Munich 1992, p. 33, p. 248.

Image online.

€ 200 - 250

154

**Ingo Maurer
'Gulp' table light, 1969**

H. 23 x 45 x 18.5 cm. Made by Design M, Ingo Maurer, Munich. Tubular metal and sheet metal, chrome-plated.

Bauer (ed.), Ingo Maurer Making Light, Munich 1992, p. 47, p. 248.

€ 300 - 350

155

**Ingo Maurer
'Pox' table/wall light, 1969**

H. 11 cm, Ø 22 cm. Made by Design M, Ingo Maurer, Munich. Tubular metal, chrome-plated sheet metal, aluminum sheet, painted white.

Bauer (ed.), Ingo Maurer Making Light, Munich 1992, p. 35, p. 248.

€ 300 - 350

156

**Ingo Maurer; Donata Savoie
'Savoie' ceiling light, 1979**

H. 200 cm. Made by Design M, Ingo Maurer, Munich. Porcelain, silicone cable, transparent, light bulb.

Dessecker, Ingo Maurer. Designing with light, Munich 2008, p. 40.

€ 400 - 500

157

**Ingo Maurer; Franz Ringelhan
2 'Ilios' floorlamps, 1983**

H. 191 cm. Made by Design M Ingo Maurer, Munich. Cast metal, metal rods, varnished gray, orange acrylic glass isolator, white glass. Marked: Manufacturer's adhesive label (1x).

Bauer (ed.), Ingo Maurer Making Light, Munich 1992, p. 252.

€ 800 - 900

158

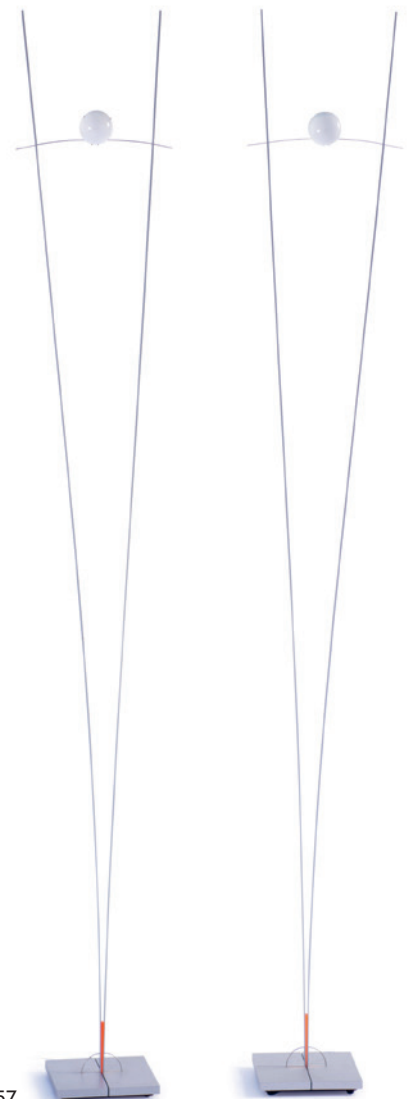
**Ingo Maurer
'Birdie' ceiling light, 2002**

H. 89.5 x 60 x 60 cm. Made by Design M, Ingo Maurer, Munich. Sheet metal, metal wires, twisted, silicone cable, transparent, goose feathers, 12-flame.

Also included: 2 replacement bulbs, halogen.

Cat. Ingo Maurer now, Munich nd, p. 97f.

€ 900 - 1.200



157

INGO MAURER

In memory of the German designer who is one of the most important lighting designers of the 20th and 21st centuries of international stature, we dedicate a separate chapter in the auction to the work of Ingo Maurer.

His career as a lighting artist began in the 1960s with the idea of presenting a light bulb inside a light bulb. Matching the Pop Art movement of the time, this led to the creation of his first luminaire called 'Bulb' in 1966. From then on, the artist worked with innovative, humorous and extremely artistic approaches. Thus, his works have always been a pioneering instance for new developments in lighting design and continue to amaze viewers to this day.

Throughout his career, the individual source material of Ingo Maurer's designs has been selected in such a way as to result in the highest possible expressive quality. His work is a unique example of the combination of technique and his own personal poetic touch.

This can also be seen in his extraordinary project to produce the 'Uchiwa' series. An extraordinary level of handwork and precision is required to produce the unique fans made of bamboo cane and rice paper. For this purpose, Ingo Maurer hired up to 21 workers from Japan in the 1970s, who had lost their jobs as a result of the chemical pollution of Marugame Bay. The undertaking paid off and the project became a great success. To this day, these rare luminaires provide a uniquely atmospheric spatial experience thanks to their warm illumination effect and effortless floating appearance.





160



159

159

**Ingo Maurer
'Wall light 'Uchiwa III', 1973**

H. 77 x 59 cm. Made by Design M Ingo Maurer, Munich. Bamboo, rice paper, metal rods, painted black.

Bauer (ed.), Ingo Maurer. Making Light, Munich 1992, p. 249; Company catalog n.d., n.p.

€ 900 - 1.200

160

**Ingo Maurer
'Ju-Ku' ceiling lamp from the 'Uchiwa' series, 1973**

H. 42 cm (without suspension), Ø 45 cm. Made by Design M, Ingo Maurer, Munich. Bamboo cane, rice paper, cotton, brass.

The lamp consists of 19 compartments. It can be installed in two different versions.

Bauer (ed.), Ingo Maurer. Making Light, Munich 1992, p. 28, p. 250; Company catalog, n. d., n.p.

€ 15.000 - 18.000



161

Ingo Maurer

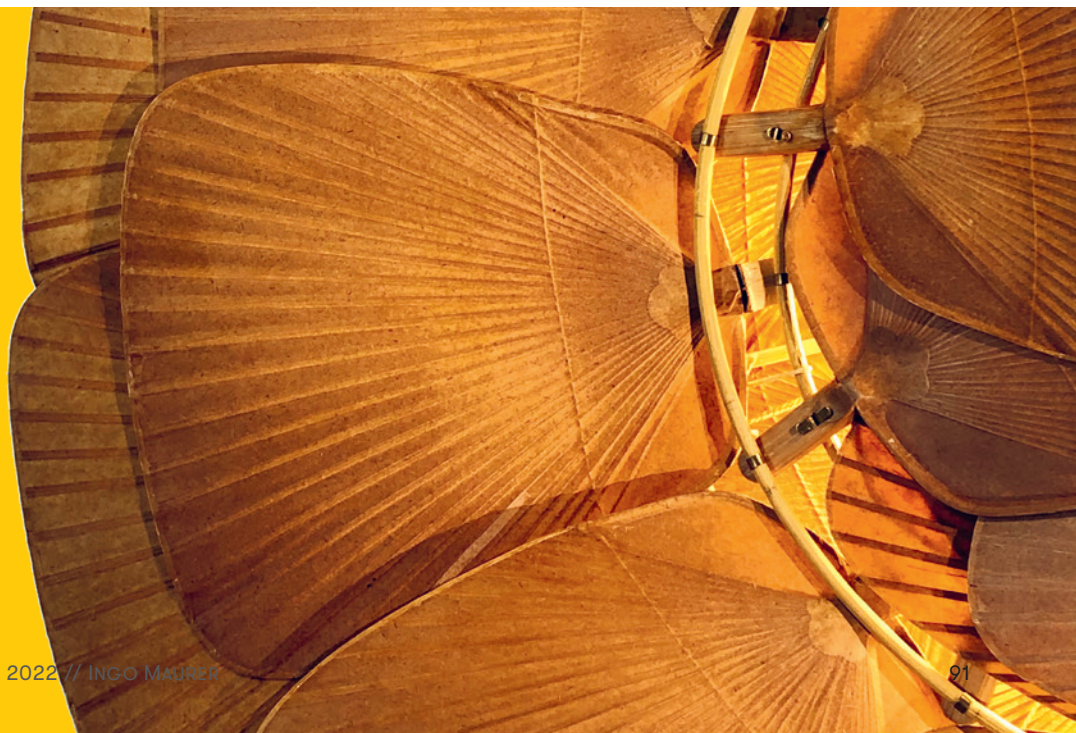
'Roku-Ju' ceiling light from the 'Uchiwa' series, 1975

H. approx. 40 cm (without suspension), Ø 100 cm. Design M, Ingo Maurer, Munich. Bamboo cane, rice paper, cotton, brass.
Label: manufacturer's label.

The lamp consists of 60 fans and was professionally and extensively restored in September 2022 by Ingo Maurer GmbH.
Also included: report and certificate from Ingo Maurer GmbH.

Bauer (ed.), Ingo Maurer Making Light, Munich 1992, p. 28, p. 250.

€ 45.000 - 60.000





162

Daniel Weil, Gerard Taylor
12 'Quasi Modo' chairs, 1990s

H. 83.5 x 42.5 x 52.5 cm. Made by Anthologie Quartett, Bad Essen. Beech wood, maple wood, partially painted blue, green and gray, black synthetic leather.

€ 6.000 - 8.000

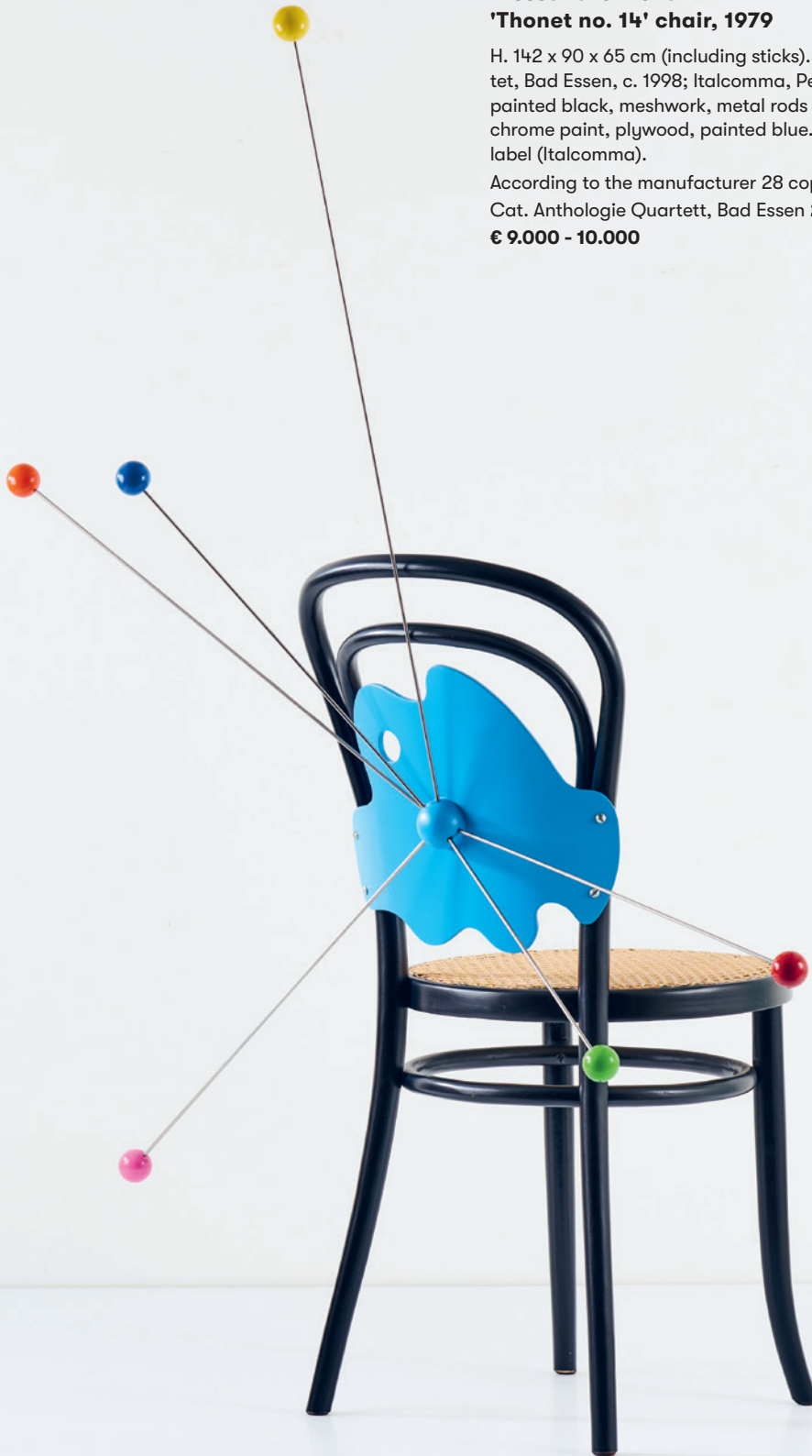
163

**Alessandro Mendini
'Thonet no. 14' chair, 1979**

H. 142 x 90 x 65 cm (including sticks). Made by Anthologie Quartet, Bad Essen, c. 1998; Italcomma, Pesaro. Bent beech wood, painted black, meshwork, metal rods with wooden balls, polychrome paint, plywood, painted blue. Marked: manufacturer's label (Italcomma).

According to the manufacturer 28 copies were produced.
Cat. Anthologie Quartett, Bad Essen 2003, p. 39.

€ 9.000 - 10.000



164

Daniel Weil
'Radio in a Bag', 1983

21 x 28 x 2 cm. Made by Anthologie Quartett, Bad Essen.
 Soft plastic bag with screen print. Marked: D. WEIL 1983
 (embossed).

€ 800 - 900



164



165

165

Michele De Lucchi
'Sinerpica' table light, 1979

H. 77 cm, Ø 17 cm. Made by Belux, Wohlen. Sheet metal, tubular
 metal, polychrome lacquer.

Sambonet, Alchimia, Turin 1986, p. 25.

€ 700 - 900

166

Ettore Sottsass
'Tahiti' table light, 1981

H. 68-71 x 40 x 10 cm. Made by Memphis, Milan. Sheet metal,
 tubular metal, polychrome lacquer, wood laminated with 'Bac-
 terio' pattern. Marked: E. Sottsass (handwritten, white).

Gramigna, Repertorio 1950-1980, Milan 2001, p. 518; Fiell, 1000
 Lights, vol. 2, Cologne 2005, p. 315.

€ 1.000 - 1.200



166



167

167

**Michele De Lucchi
'Coffe table 'Calcutta', um 1982**

H. 41 x 100 x 100 cm. Made by Up & Up, Massa. White, reddish brown and gray marble and cast stone, gray cast stone top.

Cf. Dewiel, Stühle & Sessel, Munich 1999, p. 258 (Michele de Lucchi, Bank 'Lido', 1982, Hersteller: Memphis, Mailand); cf. Cat. Memphis Milano, Milan 1991, p. 27.

€ 2.000 - 2.500



168

168

**Alessandro Mendini
'Papalina' floor lamp from the 'Timeless Objects' series, 1983**

H. 157 cm. Made by Zabro, Milan. Sheet and tube metal, painted white.

Sato, Alchimia, Japan 1985, p. 140 f.

€ 1.500 - 1.800

169

**Alessandro Mendini
'Atomaria' light object, 1984**

H. 187 cm, Ø 41 cm. Made by Zabro, Milan. MDF slats, painted turquoise blue and gray, metal rods, sheet metal, silver-plated. Marked: ZABRO, 016399 DIVISIONE NUOVA ALCHIMIA 1984 (manufacturer's metal badge).

1000 Lights, vol. 2, p. 336; Alessandro Mendini, Dinge, p. 84; Alchimia, p. 126; Italian Furniture Design, p. 169.

€ 3.000 - 3.500



169



170

**Reinhard Müller; Meyer Voggenreiter
Rare Library installation, 1988**

34 pieces. 2 ladders: each H. 238 x 68 x 4 cm; 27 shelves:
H. 8 x 33.5 x 33 cm; 5 bookends: H. 22 x 16 x 12 cm. Made
by Pentagon, Cologne. Square steel tube, sheet steel.
Included: sales prospectus and purchase documents from
1993.

Cf. exh. cat. *Schrill, Bizarr, Brachial. Das Neue Deutsche
Design der 80er Jahre*, Cologne 2014, p. 121.

€ 5.000 - 6.000

171

**Ginbände; Achim Heine; Uwe Fischer
Armchair 'SM1', 1989**

H. 73 x 57 x 84 cm. Made by Sawaya & Moroni, Milan. Wooden construction with oak veneer, stained dark brown, square metal tube, dark chrome-plating, cream white leather.

€ 1.000 - 1.200



171

172

**Steffen Dam
'Fossil' glass object, 2000**

H. 20 x 18 x 4 cm. Clear glass block with embedded pre-formed sea creatures. Marked: Dam MM Fossil (needle engraving).

€ 2.000 - 2.500



172



173

Mary Ann 'Toots' Zynsky
Unique vase, c. 1985

H. 19.5 cm, 35 x 19 cm. Fine fused threads made of polychrome colored glass. Marked on the bottom: Z (black thread).

€ 9.000 - 12.000



174

Mark Hübner

Unique 'Spikes' desk, c. 1990

H. 93 x 148 x 95 cm. Construction steel table top with. In 1989, he had his first studio at Praterinsel Munich, together with Rainer Wittenborn, Ugo Dossi, and Wolfgang Flatz. In 1993, Mark Hübner was awarded the art price of Munich. Provenance: The table was made in the beginning of the 1990s at the studio on the Praterinsel in Munich; afterwards the table was exhibited for a long time at the canteen of the art forum at the Praterinsel, and later on at the Werkbar, Kunstpark Ost, Munich.

A similar table, a bigger one, 'The last supper' was exhibited 1994 at 'Lothringer 13'.

€ 1.800 - 2.500



174



175

Mark Brazier-Jones

Lounger / daybed 'Jaba', 1997

H. 74 x 87 x 230 cm. Made by Mark Brazier Jones, Buckland, Buntingford. Cast bronze, silver plated, cowhide, pink, metal chains, silver plated, Swarovski glass crystals.

Fiell, Mark Brazier-Jones, London 2012, p. 58, p. 104f.

€ 4.000 - 6.000



QUITTENBAUM

176

Ron Arad

Two armchairs 'Victoria & Albert', 2000

H. 80 x 74 x 68 cm. Made by Moroso, Milan. Foam, red and purple textile. Marked: manufacturer's fabric label (2x).

Cat. Moroso Casa 2002, Milan 2002, p. 59.

€ 900 - 1.200



177

Patricia Urquiola

Three-seater sofa 'Lowland', 2000

H. 72 x 240 x 100 cm. Made by Moroso, Milan. Wooden box construction, dark brown leather, tubular metal, chrome-plated, sectional metal.

The arm and backrests are removable; with the armrests removed, the sofa can be used as a guest bed. Lying area 229 x 86 cm.

Cat. Moroso Casa 2002, Milan 2002, p. 23 ff.

€ 2.800 - 3.500

178

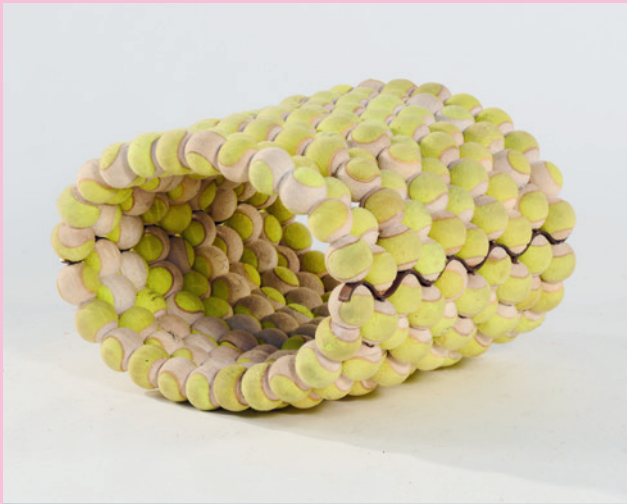
Philippe Starck

Armchair 'Oscar Bon', 2004

H. 77 x 59.5 x 58 cm. Made by Driade, Caorso. Carbon fibre, black. Marked: Manufacturer's badge.

€ 2.000 - 3.000





179

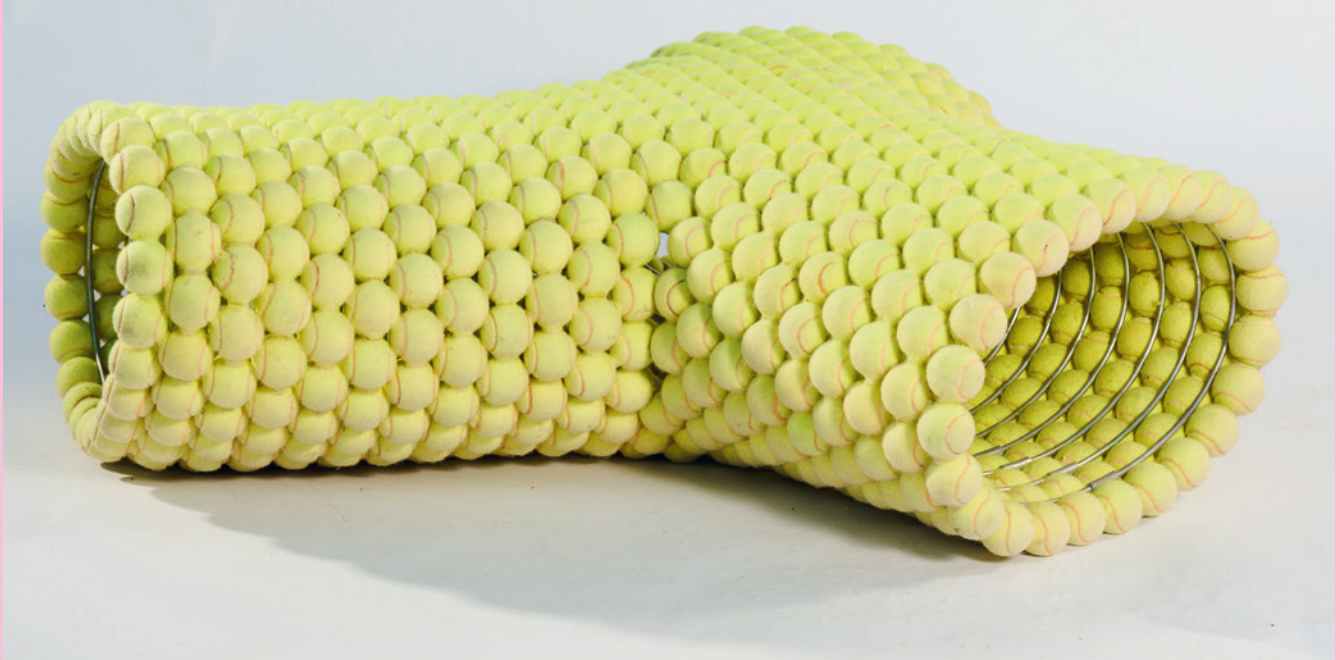
Tejo Remy; René Veenhuizen

'Tennis ball bench' with prototype, 2004

H. 46 x 145 x 130 cm, prototype: H. 45 x 56 x 62 cm. Made by Atelier Remy Veenhuizen, Rotterdam. Chrome-plated steel rods, tennis balls. Designed in 2004 for the Digital Depot of the Museum Boijmans van Beuningen in Rotterdam (dismantled in 2008). The bench was being edited in a Mini-Series of five at a later date. This bench must be seen more as a piece of art than as a piece of furniture used every day.

Provenance: The owner bought that bench directly at the designers'. Albus et al, moderne Möbel 150 Jahre Design, Königswinter 2009, p. 211.

€ 3.200 - 4.000



180

Francesco Binfarè

'On the rocks' sofa, 2004

H. 34 x 230 x 150 cm. Back rest L. 220 cm.

Made by Edra, Milan. Wooden box construction, raspberry red textile cover. Marked: manufacturer's label.

€ 2.000 - 3.000



180



181

**Dries Kreijkamp
Lounger, 2005**

H. 62 x 201.5 x 59.5 cm. Birch wood, birch plywood. Marked: artist's signature, '05.

€ 4.000 - 5.000

182

**Benjamin Jonas
Two stools, 2022**

H. 37-45 cm, Ø 30-31.5 cm. Douglas fir wood. Marked: Artist's signet (1x, incised).

€ 900 - 1.200

183

**Benjamin Jonas
Stool, 2022**

H. 45 cm, Ø 31 cm. Olive wood, cylindrical inlays made of different kinds of wood.

€ 700 - 800



184

Tom Dixon

Unique 'MAK Chair' armchair, 2008

H. 73 x 89 x 49 cm. Deformed PETG-polyester, yellow and green.

This unique chair and two others were created live during an event at the Museum of Applied Arts in Vienna in 2008 and were purchased there by the owner.

€ 9.000 - 12.000



185

185

**Fernando und Humberto Campana
'Scrigno' chest of drawers, 2009**

H. 115 x 132 x 47 cm. Made by Edra, Milan. Wooden box construction, mirrored acrylic glas, purple.
Price u.a. (eds.), Campana Brothers. Complete Works (so far), London 2010, p. 292.

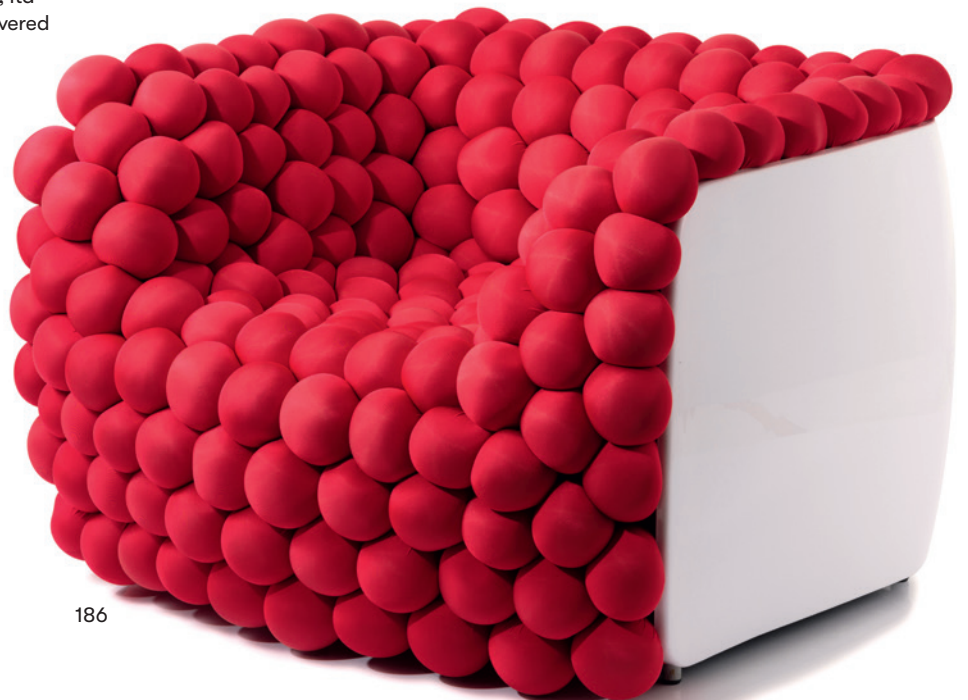
€ 3.500 - 5.000

186

**Carlo Colombo
'Blueberry' armchair, 2010**

H. 73 x 102 x 87 cm. Made by BYografia, Italy. Plastic, painted white, foam balls covered with red fabric.

€ 5.000 - 6.000



186

187

**Ernst Gamperl
Bowl, 1990**

H. 30 cm, Ø 59 cm. Oak, turned. Marked: Ernest Gamperl
77/98//200 (incised).

€ 3.500 - 5.000



187

188

**Ernst Gamperl
Bowl, 2007**

H. 35 cm, Ø 44 cm. Chestnut, turned, oak. Marked:
Ernest Gamperl 167/07//200 (incised).

€ 5.500 - 7.000



188



189

189

**Ernst Gamperl
Vase, 2008**

H. 78 cm, Ø 17 cm. Oak, turned. Marked:
Ernest Gamperl 44/08//80 (incised).

€ 3.500 - 5.000

IMPRESS

MANAGING DIRECTOR AND AUCTIONEER:

Askan Quittenbaum
+49 89 273702-113
a.quittenbaum@quittenbaum.de

DEPUTY MANAGING DIRECTOR:

Dr. Claudia Quittenbaum
+49 89 273702-111
c.quittenbaum@quittenbaum.de

SPECIALISTS:

Arthur Floss, Dipl. Betriebswirt FH
Leitung Modernes Design
+49 89 273702-110
a.floss@quittenbaum.de

Faridah Younès M.A.
+49 89 273702-115
f.younes@quittenbaum.de

JUNIOR SPECIALISTS:

Carina Schlager M.A.
+49 89 273702-10
c.schlager@quittenbaum.de

Elizaveta Leongardt M.A.
+49 89 273702-10
e.leongardt@quittenbaum.de

Eva Stangassinger B.A.
+49 89 273702-10
e.stangassinger@quittenbaum.de

Veit Volwahren M.A.
+49 89 273702-112
v.volwahren@quittenbaum.de

BOOK KEEPING AND CATALOGUE-ORDER:

Annette Ehrenhardt
+49 89 273702-120
buchhaltung@quittenbaum.de

LOGISTIC AND SHIPPING:

Dirk Driemeyer
+49 89 273702-112
dirk.driemeyer@quittenbaum.de

M2 Logistik
+49 8121 223015
service@m2logistik.de

Mail Boxes Etc.
MBE Lippl Business Service
+49 8131 37 99 132
antique-muc@mbe-dachau.de

Magic Movers Sp. z.o.o
+48 795 690 010
info@magic-movers.com

PHOTOGRAPHS:

Jochen Splett
Mirco Talierno

DESIGN:

Daniela Paringer, design & print GbR

PRODUCTION AND PRINT:

Peschke Solutions GmbH,
München



