

BAUHAUS 103

Auction 163 A
28 June 2022





BAUHAUS 103

GERMAN DESIGN

AUCTION 163 A

TUESDAY, 28 JUNE 2022

2 P.M.

PREVIEW:
THERESIENSTR. 60

Thursday	23.06. 10 a.m. - 6 p.m.
Friday	24.06. 10 a.m. - 6 p.m.
Saturday	25.06. 1 p.m. - 5 p.m.
Sunday	26.06. 1 p.m. - 5 p.m.
Monday	27.06. 10 a.m. - 6 p.m.

QUITTENBAUM
Kunstauktionen GmbH

Manging Director: Askan Quittenbaum
Theresienstrasse 60 · D-80333 Munich
Phone (+49) 89-27 37 02 10
Fax (+49) 89-27 37 02 122
E-Mail info@quittenbaum.de
Opening Time: Tuesday - Friday
3 p.m. - 6 p.m.
By appointment



Mitglied der Initiative
Datenbank
kritischer Werke



Bundesverband Deutscher Kunstversteigerer e.V.







1

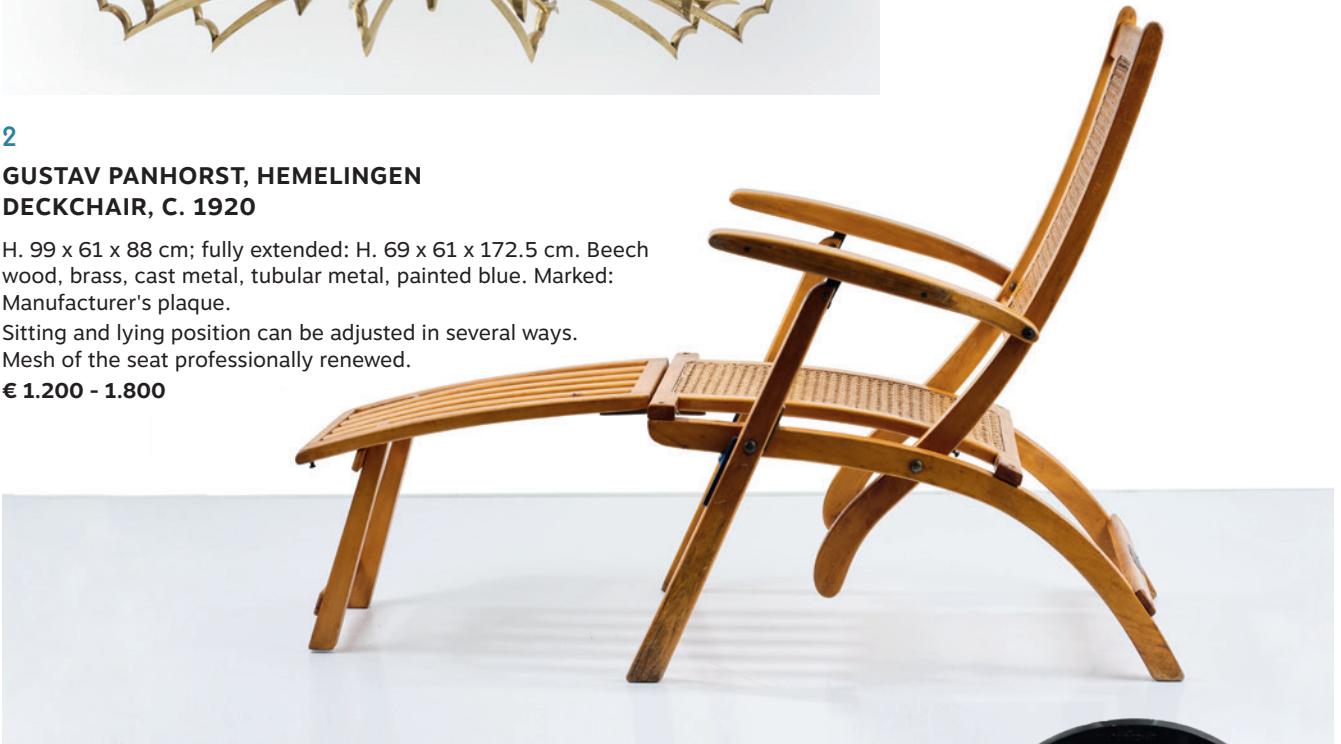
**FRANZ HAEGELE
CEILING LIGHT, C. 1925**

H. 86 cm, Ø 94 cm. Made by Schwintzer & Graeff, Berlin. Cast brass, tubular brass.
Cf. Bröhan Museum Berlin, Metallkunst, Vol. IV, Berlin 1990, p. 442ff.
€ 1.200 - 1.600

2

**GUSTAV PANHORST, HEMELINGEN
DECKCHAIR, C. 1920**

H. 99 x 61 x 88 cm; fully extended: H. 69 x 61 x 172.5 cm. Beech wood, brass, cast metal, tubular metal, painted blue. Marked: Manufacturer's plaque.
Sitting and lying position can be adjusted in several ways.
Mesh of the seat professionally renewed.
€ 1.200 - 1.800



3

**HEINRICH J. KÜCHENMEISTER
'ULTRAPHON', C. 1925**

H. 103 cm, Ø 53.5 cm. Made by Deutsche Ultraphon AG, Berlin. Wood, painted black, teak veneer, sheet metal, walnut. Marked: manufacturer's metal badge (x2), no. 2649.
With two tonearms. The production of the players with two tonearms was stopped in 1928.
Provenance: from the estate of the well-known Swiss art dealer, collector and psychotherapist Carl Laszlo.
€ 800 - 900

4

**MARGARETE SCHÜTTE-LIHOTZKY (SURROUNDINGS)
10 CONTAINERS FROM THE 'FRANKFURT KITCHEN', C. 1926**

H. 14 x 28.5 x 10.5 cm. Made by Haarer, Hanau. Aluminum sheet, different labeling on the containers. Marked: Gebrüder Haarer. Frankfurt a. M, DRPa DRGM.
€ 500 - 600





5

MARCEL BREUER
2 'B 9' SIDE TABLES, 1925/26

H. 45.5 x 45 x 39 cm. Made by Thonet, Frankenberg. Tubular steel, chrome-plated, plugged in, blockboard, painted black. Wilk, Marcel Breuer Furniture and Interiors, New York 1981, p. 44; Antonelli, Design - die Sammlung des Museum of Modern Art, New York 2003, p. 87; Vegesack (ed.), Deutsche Stahlrohrmöbel, Munich 1986, p. 40.

€ 1.500 - 1.800

6

AEG, BERLIN
CEILING LIGHT, C. 1920

H. 41 cm. Sheet metal, enameled white, aluminum, ribbed, matt glass.

€ 800 - 900

7

MARCEL BREUER
4 NESTING TABLES 'B 9', 1925/26

H. 45.5-60 x 46-65.5 x 39.5 cm. Made by Thonet Mundus (attr.). Tubular steel, chrome-plated, blockboard, painted blue.

Wilk, Marcel Breuer Furniture and Interiors, New York 1981, p. 44; Antonelli, Design - Die Sammlung des Museum of Modern Art, New York 2003, p. 87; Vegesack (ed.), Deutsche Stahlrohrmöbel, Munich 1986, p. 40.

€ 3.000 - 4.000





8



9



10



11

8

**MARCEL BREUER; MART STAM
'ARMCHAIR 'S 32', C. 1930**

H. 82 x 54.5 x 65.5 cm; Tube: Ø 2-2.5 cm. Made by Thonet, Frankenberg. Tubular steel, chrome-plated, plugged, 2 brackets, iron thread, blue, wood, framed in black. Vegesack (ed.), Deutsche Stahlrohrmöbel, Munich 1986, p. 162.

€ 800 - 900

9

**LUDWIG MIES VAN DER ROHE
'MR 140' COFFEE TABLE, 1927**

H. 52.5 cm, Ø 71.5 cm. Made by Cassina, Milan (attr.). Smoke gray glass, chrome-plated tubular metal. Exh. cat. Mies van der Rohe, Vitra-Museum, Weil/Rhine 1998, pp. 30f., 36, 85.

€ 500 - 600

10

**MARCEL BREUER
'B-35' ARMCHAIR, 1928/29**

H. 82 x 64.5 x 85.5 cm. Made by Thonet, Frankenberg. Chrome-plated tubular steel, wood, stained dark, brown leather. Marked: Manufacturer's label.

Wilk, Marcel Breuer Furniture and interiors, New York 1981, p. 82.

€ 700 - 800

11

**WALTER GEORG KOSTKA
'ATRAX' CEILING LIGHT, C. 1929**

H. 29 x 25 x 25 cm. Made by Atrax-Leuchten, Berlin. Sheet metal, painted black, glass, white.

€ 1.500 - 2.000



12

**LUDWIG MIES VAN DER ROHE
'MR 20' CANTILEVER CHAIR, 1927**

H. 83 x 54,5 x 77.5 cm; tube: Ø 2,4 cm. Made by Berliner Metallgewerbe Joseph Müller or Bamberg Metallwerkstätten, Berlin. Chrome-plated tubular steel, plugged, screwed, brown iron yarn.

In this version, the iron thread of the backrest is secured on the back by two vertical metal rails and screwed to the steel tube.

Cf. Vegesack (ed.), Deutsche Stahlrohrmöbel, Munich 1986, p. 106, p. 114; cf. exh. cat. Mies van der Rohe, Vitra-Museum, Weil/Rhine 1998, p. 30f., p. 36.

€ 6.000 - 7.000

Margit Téry-Adler (Margit Buschmann)

(Gyulafehérvár, Hungary, today Alba Julia Rumania, 1892 - 1977 Berlin) studied at Johannes Itten's private art school in Vienna from 1916/17, where she met Friedl Dicker and Franz Singer, among others. She and her friends followed the charismatic Itten to the newly founded Bauhaus in Weimar, where they attended the preliminary course from 1919-21. Téry-Adler's best-known work is the cover design for the magazine "Utopia", which she designed together with her husband Bruno Adler in 1922 and which only appeared in a single edition. As a Jew close to the resistance, she and her second husband, Hugo Buschmann, only narrowly escaped impending death in a concentration camp. After the Second World War she was employed in the advertising department of an industrial company based in Berlin. It was not until 1962 that she devoted herself exclusively to art again.



13

MARGIT TÉRY-ADLER (ATTR.)

SIDE TABLE WITH VORKURS WORK FRAMED IN THE TABLE TOP, C. 1921

H. 66 x 43 x 43 cm. Made at Bauhaus joinery, Weimar (attr.). Wood, painted salmon pink, partially turned; clear glass, ground, screwed brass fittings. Underside marked: HWP 82.

The graphic under the glass (40 x 39.7 cm) is a photocopy. The original is enclosed, unframed: 39.8 x 39.8 cm, watercolor over pencil on yellowish paper, black and red; monogram TA; verso: sketch of a lying dog (red chalk). Monogram TA Vorkurs Itten (pencil), inventory number (pencil); and another graphic work, 39 x 39.5 cm, screen print, multicolored, verso marked: inventory number (pencil).

The table was on permanent loan to the Klassik Stiftung Weimar. With reports on the condition of the drawing and the table from the Klassik Stiftung Weimar.

Bauhaus-Archiv (eds.), Das A und O des Bauhauses, Leipzig 1995, p. 328.

€ 5.000 - 8.000





"(...). This chair comes from the 'House of the People' in Probstzella and was probably part of the seating in the 'Red Hall'. A seat number '9' is painted in white on the top left of the backrest and in the middle a Label 'Rat der Gemeinde / Probstzella' with number attached. Arndt's folding chair

is a further development of Breuer's model, which was sold under the type designation B8. According to information from the Arndt family, these chairs, which were set up in large numbers in the House of the People, were to be manufactured by the Bauhaus. However, the asking price was too high for the builder Franz Itting, so he had them made in his own small metalworking shop. (...)"

exhibition cat. bauhaus furniture, Bauhaus Archive Berlin 2003, p. 331.

"Between 1926 and 1929, Alfred Arndt stayed mainly in Probstzella, Thuringia, where he managed the expansion of the "House of the People" on behalf of the entrepreneur Franz Itting. The interior of the building was designed by Arndt and other Bauhausers and partially made in the Dessau workshops. The lightweight folding chair was part of the inventory of the "Red Hall" in which dance evenings were held in addition to meetings and theater and cinema performances."

www.bauhauskooperation.de/wissen/das-bauhaus/werke/tischlerei/klappstuhl/

14

ALFRED ARNDT

FOLDING CHAIR 'VOLKSHAUS PROBSTZELLA', 1927/28

H. 91.5 x 41.5 x 53 cm. Made by Locksmith Itting, Propstzella 1927/28. Tubular steel, chrome-plated, plywood, stained black. Marked: embossed stamp: 'Ideal' plaque and fish symbol; 2 inventory labels of the municipality of Probstzella, numbering 372.

Bauhaus Archiv Berlin, Der Bauhaus Meister Alfred Arndt, In der Vollendung liegt die Schönheit, Berlin 1999, Frontcover, p. 35; Hoffmann (ed.), Von Arts and Crafts zum bauhaus, Berlin 2019, p. 352; Exh. cat. bauhaus-möbel, Bauhaus-Archiv Berlin 2003 p. 245, p. 331.

€ 9.000 - 10.000





15

GERMANY
2 CEILING LIGHTS, 1930S

H. 50-55 cm, Ø 28 cm. Tubular metal, sheet metal, nickel-plated, glass, colorless and white, partially matted. Marked: System 064.

€ 700 - 900

16

ERNST ROCKHAUSEN SONS, WALDHEIM/SAXONIA
MAGAZINE RACK / ETAGERE, C. 1930

H. 95 x 51 x 30 cm. Tubular brass, sheet brass, wood, painted black.

€ 400 - 500



17

BRUNO WEILL
DESK 'B 282', 1930/31

H. 72.5 x 170 x 77 cm; tube Ø 2.5 cm; Drawer unit:
H. 58 x 45 x 75 cm. Made by Thonet, Paris. Tubular steel,
chrome-plated, hexagon head screws, wood, painted dark
red.

Re-painted.

Vegesack (ed.), Deutsche Stahlrohrmöbel, Munich 1986,
p. 85 (bewé), p. 119; p. 134 (there Arch. Coqueri).

€ 2.000 - 3.000





18

**MARCEL BREUER
'B 7A' DESK CHAIR, C. 1930**

H. 78-96 x 54 x 55.5 cm. Made by Thonet, Berlin, 1930s. Nickel-plated tubular steel, cast iron with silver-gray finish, beechwood and plywood with black finish, metal hooks, 'Eisengarn' textile on the back rest.

Vegesack (ed.), *Deutsche Stahlrohrmöbel*, Munich 1986, p. 84;
Thonet cat. 1934/35, p. 21, p. 31.

€ 7.000 - 9.000



19

STEPHAN HLAWA

PORTRAIT OF A MAN SEATED ON A WOODEN SLAT-CHAIR, C. 1930

100.0 x 89.0 cm. Oil on canvas mounted on panel.

Signed lower right: S. Hlawka (oil).

The artist was particularly well known as a stage designer in Austria, but also created oil paintings and graphics. The New Objective image is likely to have been created between 1925 and 1935; during this time Hlawka created more portraits in this manner.

€ 400 - 500

20

MARCEL BREUER

'TI 1A' WOODEN-SLAT CHAIR, 1924

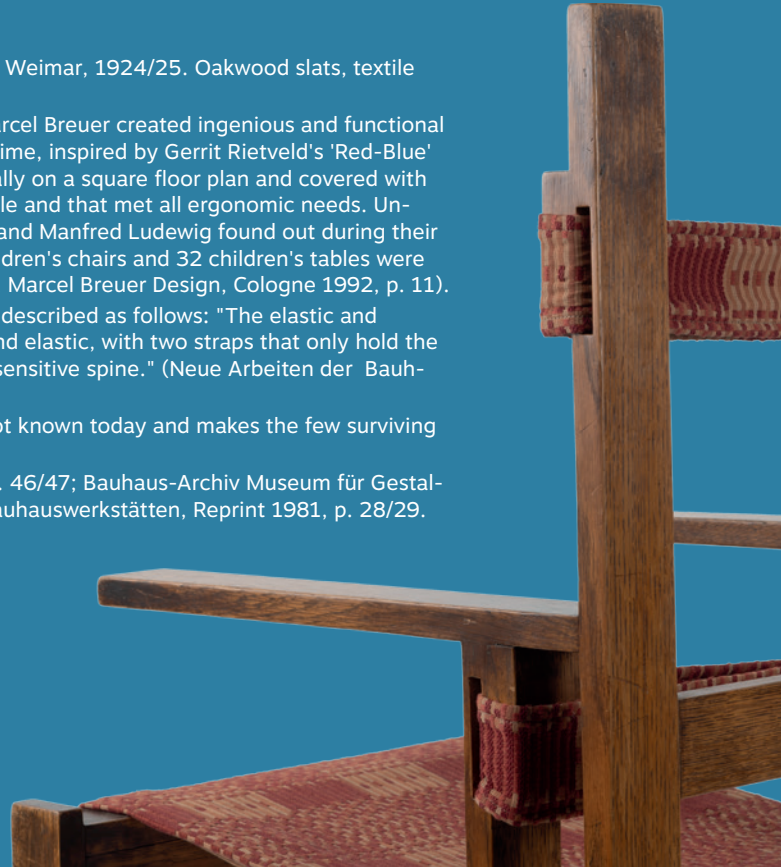
H. 94.5 x 56.5 x 57.8 cm; slat thickness: 2 x 5.5 cm. Made at Bauhaus Weimar, 1924/25. Oakwood slats, textile fabric from the period with linen cord.

Even as a so-called clerk in the furniture workshop at the Bauhaus, Marcel Breuer created ingenious and functional designs; his children's furniture was particularly popular. At the same time, inspired by Gerrit Rietveld's 'Red-Blue' chair, he used the simplest of means (wooden slats, assembled vertically on a square floor plan and covered with fabric strips) to create a piece of furniture that was both light and stable and that met all ergonomic needs. Unfortunately, the 'ti 1a' did not become a bestseller: Magdalena Droste and Manfred Ludewig found out during their research that within six months (summer 1924 - March 1925) 262 children's chairs and 32 children's tables were produced, but only 26 examples of the slatted chairs (Droste/Ludewig, Marcel Breuer Design, Cologne 1992, p. 11). In „Neue Arbeiten der Bauhaus Werkstätten", 1925, p. 29, the chair is described as follows: "The elastic and sloping seat supports the entire thigh. The back is then also sloping and elastic, with two straps that only hold the shoulder blades and cross - flat parts of the back - touch, expose the sensitive spine." (Neue Arbeiten der Bauhauswerkstätten, reprint 1981, p. 28f.).

How many of the slatted chairs have survived the ravages of time is not known today and makes the few surviving examples absolute icons.

Droste/Ludewig, Marcel Breuer Design, Cologne 1992, p. 6-8, p. 35, p. 46/47; Bauhaus-Archiv Museum für Gestaltung Sammlungs-Katalog, Berlin 1987, p. 90/91; Neue Arbeiten der Bauhauswerkstätten, Reprint 1981, p. 28/29.

€ 50.000 - 60.000







21

**GERMANY
3 CEILING LIGHTS, 1930S**

H. 84 cm, Ø 48 cm. Tubular metal, nickel-plated sheet metal, white-painted aluminum sheet, white glass.

€ 400 - 500

22

**WASSILI AND HANS LUCKHARDT
'S 36 P' ARMCHAIR, 1930/31**

H. 90 x 53 x 60 cm. Made by Thonet, Frankenberg, 1990s. Leather, black, tubular metal, chrome-plated. Marked: manufacturer's label.

Cf. Vegesack (ed.), Deutsche Stahlrohrmöbel, Munich 1986, p. 163.

Image online.

€ 350 - 400

23

**GERMANY
SERVING TROLLEY, 1930S**

H. 78 x 42 x 42 cm. Tubular metal, nickel-plated, wood, painted black.

Provenance: from the estate of the well-known Swiss art dealer, collector and psychotherapist Carl Laszlo.

€ 400 - 450



24

**GERMANY
ARMCHAIR / LOUNGER, 1930S**

H. 67-103 x 78 x 80-184 cm. Tubular bamboo, rattan weave. Foldable.

Image online.

€ 400 - 500

25

**HERMANN GAUTEL (ATTR.)
STOOL, 1930S**

H. 37.5 x 37 x 37 cm. Oak, parchment, nails.

€ 700 - 800





26

**ERICH DIECKMANN
WICKER ARMCHAIR, 1930/31**

H. 77 x 55.5 x 83 cm. Made by F. Kerber, Coburg (attr.). Bamboo, rattan.

Cat. Erich Dieckmann, Möbelbau, Stuttgart 1931, reprint Weil/Rhine 1990, p. 63.

€ 6.000 - 7.000

27

**VEREINIGTE WERKSTÄTTEN, MUNICH
'SECRETARY', 1930S**

H. 126 x 110 x 40.5 cm. Wooden box construction, different kinds of veneers, brass.

€ 800 - 1.200

28

**ALICE VON PECHMANN
'SCHINKEL' TABLE LIGHT, 1931**

H. 66 cm, Ø 30 cm. Made by StPM Berlin. Porcelain, white glazed, brass, textile shade, white. Marked: scepter, 7, 857 (embossed).

Restored.

Gronert, Porzellan der KPM Berlin, 1918-88, vol. I, Berlin 2020, p. 26.

€ 400 - 500

29

**MART STAM
'CHAIR 'B 43/1', 1935**

H. 80.5 x 40 x 51.5 cm. Made by Thonet, Frankenberg. Tubular steel, chrome-plated, plugged, plywood, painted black. Marked: Manufacturer's plaque.

Vege sack (ed.), Deutsche Stahlrohrmöbel, Munich 1986, p. 131.

Image online.

€ 350 - 400

30

**MARCEL BREUER
'B 91' DESK, 1932**

H. 75 x 119 x 60 cm. Made by Thonet, Frankenberg. Tubular steel, chrome-plated, wooden construction, blockboard with walnut veneer, stained dark.

Vege sack (ed.), Deutsche Stahlrohrmöbel, Munich 1986, p. 111.

€ 3.000 - 4.000





28



31



32

31

**HIN BREDENDIECK; HERMANN GAUTEL
TABLE LIGHT '967', 1934**

H. 45 cm, Ø 14.3 cm. Made by Körting & Mathiesen, Leipzig-Leutzsch. Cast iron, tubular metal, sheet metal, painted black. Marked: KANDEM plaque.

Exh. cat. Bauhausleuchten? Kandemlicht!, Stuttgart 2002, p. 135.

€ 300 - 350

32

**CHRISTIAN DELL
TABLE LIGHT '6556', 1934**

H. 44 cm, Ø 21.3 cm. Made by Kaiser & Co., Neheim-Hüsten. Sheet metal, tubular metal, painted black. Marked: ORIGINAL KAISER idell.

€ 300 - 350

33

**MARCEL BREUER
LOUNGE CHAIR, C. 1977**

H. 95 x 163.5 x 62 cm. Made by Tecta, Lauenförde, c. 1977. Chrome-plated tubular steel, rubber straps, upholstery with dark-gray textile.

The design is based on a chair made by Breuer for Embru Werke, Rüti. Tecta changed it as agreed upon with Marcel Breuer from a static sofa to a flexible one (by moving the armrests). This chair had been shown at trade shows in 1978/79 but never produced again.

Cf. Droste/Ludewig, Marcel Breuer Design, Cologne 1992, p. 119.

€ 4.000 - 5.000





34

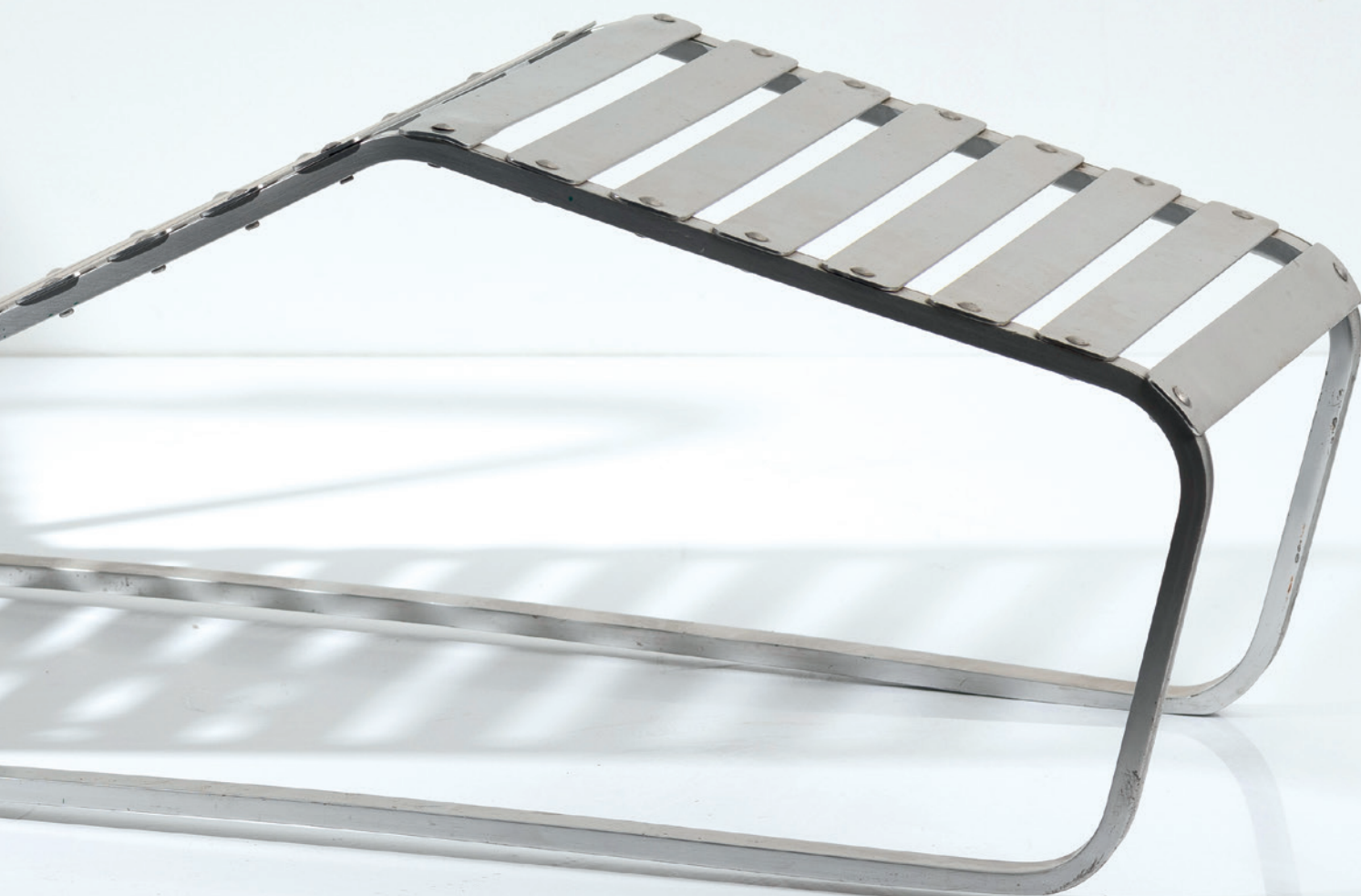
**MARCEL BREUER
CHAISE-LOUNGE '313', 1932-34**

H. 73,5 x 59 x 134,5 cm. Made by Embru-Werke, Rüti for Wohnbedarf AG, Zurich. Profiled and sheet aluminum (Anticorodal), wood, stained dark.

One aluminium slat missing.

Cf. Wilk, Marcel Breuer, New York 1981, p. 122; Lepel, Marcel Breuer: Aluminium, Embru-Werke, Zürich 2017, n.p.

€ 14.000 - 18.000





35

JOSEF FRANK; ADOLF G. SCHNECK

TABLE 'T 142', 3 ARMCHAIRS 'A 64 F' AND FLOWER TABLE 'T 377', 1927-1930

Table: H. 60.5 cm, Ø 68 cm; Armchairs: H. 79.5 x 52 x 62.5 cm; Flower table: H. 47 x 93.5 x 41 cm.

Made by Thonet, Vienna. Beech wood, plywood, painted salmon pink ('Velvet No. 102'), glass, white.

Marked: manufacturer's stamp (chairs), manufacturer's sticker (flower table).

Provenance: Villa of architect Vlastimil Brozek, Prague. The table was designed by Josef Frank, the armchairs by Adolf G. Schneck.

Ott-Wodni, Josef Frank 1885-1967, Raumgestaltung und Möbeldesign, Vienna 2015, p. 308; Ottillinger, Wohnen zwischen den Kriegen, Vienna 2009, p. 48; Adolf G. Schneck, Der Stuhl, Stuttgart 1928, p. 20; Catalog Van Ham, Collection Thillmann, THONET-PERFEKTES DESIGN, lot 186.

€ 4.500 - 6.000

36

**CZECHOSLOVAKIA
KITCHEN TABLE FROM VILLA
BROZEK, PRAGUE, C. 1930**

H. 80 x 100 x 71 cm. Wood, plywood,
stained dark, partially cream-colored,
chrome-plated metal.

Provenance: Villa of architect Vlastimil
Brozek, Prague.

€ 900 - 1.200



37

**CZECHOSLOVAKIA
2 ARMCHAIRS ("CANADIANS")
FROM VILLA BROZEK, PRAGUE,
C. 1930**

H. 61.5-90 x 70 x 86-119 cm. Wood,
plywood with walnut veneer, metal
fittings, gray-brown textile covering.

Provenance: Villa of the architect
Vlastimil Brozek, Prague.

Upholstery renewed.

€ 1.500 - 2.000





38

**MARCEL BREUER (ATTR.)
'B 22' SHELF, C. 1928**

H. 76 x 80 x 38 cm. Made by Slezak, Bystřice pod Hostýnem (attr.). Tubular steel, chrome-plated, blockboard, painted blue.

€ 1.200 - 1.500



39

**MART STAM
'S 34' ARMCHAIR, 1927**

H. 88 x 53.5 x 63.5 cm. Made by Mücke-Melder, Frystat (attr.), 1930s. Tubular steel, chrome-plated, beech plywood.

From a BATA shoe store in the 1930s.

Cf. Thonet AG (eds.), Thonet cat. 688, Frankenberg 1970, p. 14.

€ 500 - 600



40

**THONET MUNDUS
'BATA' WORK TABLE,
1930S**

H. 78 x 201.5 x 91.5 cm.

Tubular steel, chrome-plated, blockboard with yellow linoleum coating, beechwood banding, painted black.

€ 4.000 - 4.500

41

**PETR VICHŘ & CO., PRAGUE
ARMCHAIR '1082', C. 1935**

H. 78-100 x 61 x 93-105 cm. Tubular steel, chrome-plated, steel rail, forged, chromium-plated, wood, painted black, greenish stripes, original textile cover. Marked: Manufacturer's stamp. Adjustable in three positions.

€ 1.800 - 2.200



42

**MARCEL BREUER; ANTON LORENZ
(AFTER)
GARDEN ARMCHAIR '1034', C.
1935**

H. 82.5 x 55.5 x 67.5 cm. Made by Embru-Werke, Rüti. Tubular steel, painted red, wickerwork, beech wood. Marked: Embru plaque.

This is a factory design by the Embru company in Rüti, based on the tubular steel cantilever chair 'SS 32' by Anton Lorenz (Desta) and the tubular steel cantilever chair 'B 34' by Marcel Breuer (Thonet).

€ 3.000 - 4.000



43

**LE CORBUSIER; PIERRE JEANNER-
ET; CHARLOTTE PERRIAND
ARMCHAIR 'LC 1', 1928**

H. 66 x 70 x 67.5 cm. Tube: Ø 1.5-3 cm. Made by Heidi Weber, Zurich (attr.), c. 1959. Tubular steel, nickel-plated, black leather.

Rüegg, Le Corbusier, Möbel und Interieurs, Zurich 2012, p. 279 (model from 1932).

€ 3.000 - 4.000





44

44

**PAUL SPECK
INKWELL, 1927-30**

H. 6 x 26.5 x 8.5 cm. Made by Staatliche Majolika-Manufaktur, Karlsruhe. Earthenware, glazed orange. Marked: manufacturer's stamp.

Exh. cat. Paul Speck und die Karlsruher Majolika, Stuttgart 1997, p. 40.

€ 350 - 500

45

**MARGARETE HEYMANN-LOEBEN-STEIN-MARKS
DOLL SERVICE, C. 1930**

7 pieces: bowl Ø 13.5 cm; 6 small plates Ø 6.5 cm. Made by Hael-Werkstätten, Marwitz. Earthenware, glazed orange. Marked: manufacturer's stamp, model number.

Image online.

€ 500 - 600



46

46

**MARGARETE HEYMANN-LOEBEN-STEIN-MARKS
'NORMA' SERVICE, 1930S**

16 pieces: teapot: H. 15 cm, Ø 15 cm; fruit bowl: H. 8 cm, Ø 35 cm; bowl: H. 6 x 17 x 36 cm; candy bowl: Ø 19.5 cm; 6 dinner plates: Ø 19 cm; 6 cups with saucers: H. 6 cm, Ø 14.5 cm. Made by Hael-Werkstätten, Marwitz. Earthenware, glazed matt in white and yellow. Marked: manufacturer's mark: monogram, Hael norma (stamp mark, dark blue).

Cf. exh. cat. Märkische Ton-Kunst. Berlin und Brandenburg Keramik der 20er und 30er Jahre, Berlin 1992, p. 130, no. 276 (large bowl).

€ 800 - 1.000



47

47

**TRUDE PETRI
'URBINO' DINNER AND TEA SERVICE, 1931**

68 pieces. 6 dinner plates, 6 soup plates, 6 dessert plates, 18 bread plates, 6 dessert bowls, 6 soup cups with saucers, 6 tea bowls with saucers, 6 mocha cups with saucers, 6 coffee cups with saucers, 2 candlesticks. H. 4-7 cm; Ø 13-24.5 cm. Execution: StPM Berlin, from 1939-1968. Porcelain, white, glazed, painted gold. Marked: scepter (underglaze, blue), imperial orb (overglaze, green), some year marks and form marks (embossed).

€ 1.500 - 2.000



48

**JAN BONTJES VAN BEEK
VASE, BEFORE 1950**

H. 30.7 cm. Earthenware, running glaze in shades of brown. Marked: artist's signet (black, handwritten).

€ 700 - 800

49

**RICHARD BAMPI, KANDERN
VASE, C. 1950**

H. 21 cm. Stoneware, light brown, high-firing glaze, dark blue crystal glaze. Marked: RBampi (black, handwritten), signet (embossed), original manufacturer's paper label marked: 6/565/25.

Image online.

€ 250 - 400

50

**EVA VON STÖSSEL
TRAY, C. 1925**

Ø 28.5 cm. Sheet brass, embossed, punched. Marked: 828, workshop signet, 19 (embossed).

Eva von Stössel worked as a metal smith for the Deutsche Werkstätten in Hellerau and was a member of the Deutsche Werkbund. From 1922 until his escape from the National Socialists, she was married to Georg von Mendelssohn. Her works can be found at Kunstgewerbemuseum Dresden, among others.

€ 500 - 600



51

**BAUHAUS METAL WORKSHOP
DESK TIDY, C. 1926**

H. 8.2 x 10.5 x 8.6 cm. Nickel silver, silver plated.

Provenance: from the estate of Prof. Hubert Hoffmann, Graz (Bauhaus student 1926 - 1931). Such an object was offered, marked with the BAUHAUS stamp, in an auction at Phillips, New York on May 24, 2007, as well as at Lempertz, Berlin on May 23, 2008, each time attributed to Marianne Brandt.

€ 2.000 - 3.000



52

**FRIEDRICH MARBY
CANDLESTICK, C. 1950**

H. 12.5 cm. Cast brass, sheet brass, partially enameled red.
Marked: workshop signet, HANDARBEIT (embossed).
€ 400 - 600



52

53

**FRIEDRICH MARBY
BOWL, 1930S**

Ø 29 cm. Cast brass, sheet brass, copper-plated. Marked: workshop signet, HANDARBEIT (embossed).
€ 400 - 450



53

54

**HAYNO FOCKEN
TEA CADDY WITH SPOON, C. 1935**

H. 12 cm; L. 13.7 cm. Brass plate, handmade.
€ 550 - 600



55

**HARALD BUCHRUCKER
CANDLESTICK, C. 1935**

H. 25 cm. Pewter. Marked: ZINN REINE HANDARBEIT, workshop signet, 0101 (embossed).
€ 500 - 600



55

56

**WILHELM WAGENFELD
CANDLESTICK, 1952/53**

H. 28 cm, Ø 29.8 cm. Made by WMF, Geislingen. Brass, silver-plated.
Five lights.
Manske, Wilhelm Wagenfeld (1900 - 1990), Ostfildern 2000, p. 126.
€ 500 - 550



56



57



57

**WILHELM WAGENFELD
2 CANDLESTICKS, 1952/53**

H. 28 cm, Ø 29.8 cm. Made by WMF, Geislingen. Brass, silver-plated.

Manske, Wilhelm Wagenfeld (1900 - 1990), Ostfildern 2000, p. 126.

€ 900 - 1.200

58

**WMF, GEISLINGEN
2 CHAMPAGNE COOLERS, 1953**

H. 22 cm, Ø 21 cm. Silver-plated nickel silver. Marked: Manufacturer's mark.

Altgeld-Peters, WMF, Bd. 1, Berlin 2000, p. 484.

Image online.

€ 400 - 500

59

**WMF, GEISLINGEN (ATTR.)
'IKORA' VASE, C. 1928**

H. 55 cm. Cased glass, colorless, opal white and seal red, so-called 'ikora' glass, with enclosed, streaky warped powders, blooming metal oxides.

Cf. Burschel / Scheiffele, WMF Ikora & Myra Gläser, Stuttgart 2003, p. 98.

€ 800 - 900



60

**WILHELM WAGENFELD
VASE, 1952**

H. 40 cm. Made by WMF, Geislingen. Tourmaline green glass.

€ 1.200 - 1.500

61

**LUISE SCHAEFER
CARPET / TABLE RUNNER, C. 1920**

100 x 57 cm. Made at Technische und kunstgewerbliche Fachschule, Kiel. Woven wool in shades of red, blue and brown lined on linen fabric.

Provenance: Granddaughter of the designer who made the rug as part of her studies at the technical school in Kiel.

Image online.

€ 350 - 500

62

**LUISE SCHAEFER
CARPET / TABLE RUNNER, C. 1920**

135 x 60 cm. Made at Technische und kunstgewerbliche Fachschule, Kiel. Woven wool, red, blue and brown.

Provenance: Granddaughter of the designer who made the rug as part of her studies at the technical school in Kiel.

Image online.

€ 350 - 500

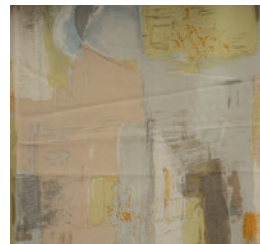


63

ELSBETH KUPFEROTH
MIXED LOT OF 6 FABRIC COUPONS, 1950/60S

120 x 100-150 cm. Made by Pausa, Moessingen. Cotton blended fabrics and blended fabrics, polychrome print. Marked: Manufacturer's labels.

€ 700 - 800

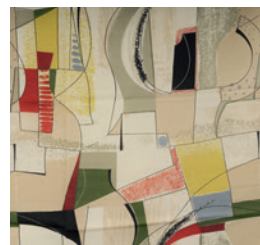
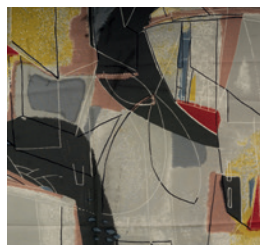


64

ELSBETH KUPFEROTH
MIXED LOT OF 6 FABRIC COUPONS, 1950/60S

100 x 100 cm; 120 x 110-200 cm. Made by Pausa, Moessingen. Cotton blended fabrics and blended fabrics, polychrome print. Marked: Manufacturer's labels.

€ 700 - 800

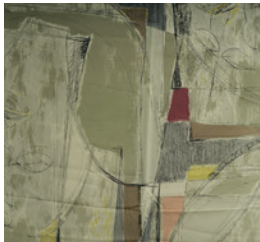
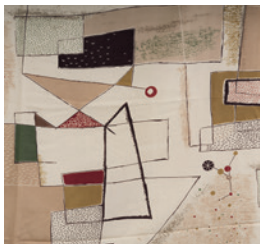
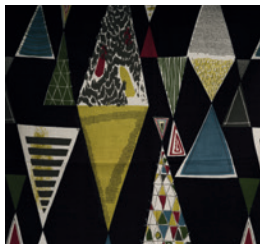


65

ELSBETH KUPFEROTH
MIXED LOT OF 6 FABRIC SWATCHES, 1950/60S

120 x 80-170 cm. Made by Pausa, Moessingen. Cotton blended fabrics and blended fabrics, polychrome print. Marked: Manufacturer's labels.

€ 700 - 800



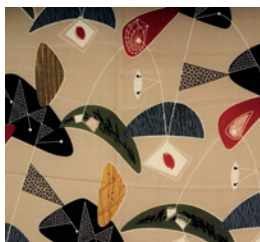
66

ELSBETH KUPFEROTH

MIXED LOT OF 6 FABRIC SWATCHES, 1950/60S

110-120 x 110-240 cm. Made by Pausa, Moessingen. Cotton blended fabrics and blended fabrics, polychrome print. Marked: Manufacturer's labels.

€ 700 - 800



67

ELSBETH KUPFEROTH

MIXED LOT OF 9 FABRIC SWATCHES 1950/60S

60 x 90 cm; 120 x 60-240 cm. Made by Pausa, Moessingen. Cotton blended fabrics and blended fabrics, polychrome print. Marked: Manufacturer's labels.

€ 900 - 1.000

Born in Berlin in 1920, the designer **Elsbeth Kupferoth** studied at the Textile and Fashion School in Berlin and the German Fashion Institute in Cologne before working as an illustrator for the magazine "Der Eulenspiegel!" and the feuilleton of the daily newspaper "Neue Zeitung". In the 1950s in particular, her designs for decorative fabrics attracted great interest from the European, American and Japanese public. As early as 1949 her fabrics were exhibited at the Werkbund exhibition in Cologne, and in 1954 at the "Werkkunst in Deutschland" exhibition in Reykjavik, Iceland. After founding her own textile publishing company in Munich in 1956, she worked very successfully in the decades that followed with important fabric printers and wallpaper manufacturers such as Pausa AG, Mössingen, Marburger wallpaper, Marburg and the paper and wallpaper factory Bammental, Bammental. Her work has been exhibited at the Victoria & Albert Museum in London and is part of the collection there as well as other important private and public collections. Elsbeth Kupferoth died in Munich in 2017 after a long hardworking and successful life.



68

**MAX BILL
TRIPOD CHAIR, 1949**

H. 75 x 44 x 50.5 cm. Made by Horgen Glarus, Glarus. Beech wood, beech plywood, painted black.

Exh. cat. Max Bill zum 80. Geburtstag, center for art exhibitions in the GDR, Weimar 1988, p. 83; Rüegg (ed.), Schweizer Möbel und Interieurs, Basel 2002, p. 160.

€ 800 - 1.200

69

**EGON EIERMANN
2 'SE 68' CHAIRS, 1951**

H. 79.5 x 46.5 x 49 cm. Made by Wilde & Spieth, Esslingen. Plywood with beech veneer, tubular metal, painted black.

Early and rare version with 'one-point' screw connection of the seat.

Exh. cat. Egon Eiermann. Die Möbel, Badisches Landesmuseum Karlsruhe 1999, p. 88f.

€ 1.600 - 2.000



70

**EGON EIERMANN
'SE 119A' ARMCHAIR, 1958**

H. 80 x 54 x 56 cm. Made by Wilde & Spieth, Esslingen. Beech wood, beech plywood, leather, cane.

Exh. cat. Egon Eiermann. Die Möbel, Badisches Landesmuseum Karlsruhe 1999, p. 100. Image online.

€ 800 - 900

71

**ERICH SCHELLING
5 FOLDING CHAIRS, 1954**

H. 78 x 50.5 x 58 cm. Made by Mauser-Werke, Waldeck. Tubular metal, chrome-plated, walnut veneer. Marked: Manufacturer's badge.

The folding chairs designed by E. Schelling were only used in the Karlsruhe Schwarzwaldhalle, which he also designed; all in all it is presumed that only about 5,000 copies were made.

€ 900 - 1.200



72

**MÜNCHNER ZIERSPIEGEL, MUNICH
WALL MIRROR, C. 1955**

55.5 x 55 cm. Copper-plated sheet brass, mirror glass.
Marked: Manufacturer's label with care instructions.
€ 600 - 700

73

**KARLHEINZ LEHR
'NYFORM 1005' LOUNGE CHAIR, C. 1955**

H. 81.5 x 61 x 76 cm. Made by Rhenish upholstered furniture works Carl Hemmers, Oberhausen. Wood, painted black, black synthetic leather.

Image online.

€ 400 - 500

74

**STEPHAN EUSEMANN
ARMCHAIR, C. 1957**

H. 74 x 58 x 69 cm. Pitchpine wood, green plaid jacquard fabric, jute ribbons.

The fabric, designed in 1956, was awarded a gold medal at the 1957 Triennale in Milan. Execution: Technical school for the textile industry in Münchberg. Jacquard fabric, cotton, grosgrain.

Wichmann, Von Morris bis Memphis, Textilien der Neuen Sammlung, Basel 1990, p. 245.

Image online.

€ 400 - 500

75

**GERMANY
PLUG-IN PUZZLE FOR TODDLERS, C. 1950**

H. 9.5 x 39.5 x 33 cm. Maple wood, sawn, partially painted dark green.

€ 500 - 600

76

**HANS (NICK) ROEHRICHT
'TC 100' STACKING CROCKERY, 1958/59**

20 pieces. Jug, 4 cups with saucers, 4 dessert plates, 4 bowls, 4 egg cups, milk jug, sugar bowl, bowl. H. 4-18.7 cm; Ø 10-19 cm. Made by Thomas, Marktreidwitz. Porcelain, white, glazed. Marked: Manufacturer's mark.

For four persons.

€ 600 - 700



77

**DERU, WIESBADEN
6 'DERU' TOY ANIMALS, C. 1960**

2 frogs, polar bear, boxer, dachshund and cow. H. 4.1-12 cm. Leather, folded and riveted. Marked: Branding DERU GERMA-NY.

€ 700 - 900



78

**KONRAD KELLER
ROCKING HORSE 'JÖRG', C. 1958**

H. 64 x 31 x 101 cm. Made by Konrad Keller Spielzeug, Goeppingen. Beech wood, painted red, black and white. Marked: manufacturer's label.

€ 350 - 400



79

**KONRAD KELLER
ROCKING HORSE 'PETER', C. 1958**

H. 55 x 31 x 85.5 cm. Made by Konrad Keller Spielzeug, Goeppingen. Beech wood. Marked: manufacturer's label.

€ 250 - 300

80

**KONRAD KELLER
ROCKING HORSE 'PETER', C. 1958**

H. 54 x 31 x 86.5 cm. Made by Konrad Keller Spielzeug, Goeppingen. Beech wood, painted in red, yellow and black.

€ 300 - 350

81

**GÜNTER SSYMMANK
'PHILHARMONIE I' CEILING LIGHT, 1959**

Ø 60 cm. Metal rods, painted white, creme-white plexiglass.

Used in the Berlin Philharmonie, constructed by Hans Scharoun.

Original fixture missing.

Fiell (eds.), 1000 Lights, vol 1, Cologne 2005, p. 556f.

€ 2.000 - 3.000





82

**VEB DEUTSCHE WERKSTÄTTEN, DRESDEN-HELLERAU
'2' ARMCHAIRS AND COFFEE TABLE, C. 1958**

Armchair: H. 65.5 x 69 x 87.5 cm; Table: H. 50.5 x 99.5 x 71 cm.
Oak wood, cord mesh, red textile cover.

€ 1.800 - 2.500

83

**RUDOLF FRANK (ATTR.)
'312' CUPBOARD / SIDEBBOARD, 1958**

H. 137.5 x 183.5 x 41.5 cm. Made by Vereinigte Werkstätten,
Munich. Wooden box construction with walnut and maple veneer,
mahogany veneer on the inside. Marked: sales label.

€ 900 - 1.200



84

**RUDOLF FRANK (ATTR.)
'312' CUTLERY CABINET, 1958**

H. 75 x 109.5 x 51 cm. Made by Vereinigte Werkstätten, Munich.
Wooden box construction with walnut and maple veneer, mahogany
veneer on the inside. Marked: distributor's label.

Image online.

€ 300 - 400

85

**GERMANY
'COCOON' FLOOR LAMP, C. 1958**

H. 88 cm, Ø 55 cm. Tubular brass, sheet brass, 'Cocoon' covering
in synthetic resin fiber.

€ 800 - 900



86

**EKKEHARD FAHR
FLOOR LAMP 'M 60', 1959/60**

H. 181 cm, L. 122 cm. Made by Fahr + Partner, Munich. Chrome-plated tubular metal, tubular aluminum, plexiglass, cast metal, painted gray. Marked: M60 3/100 1960/2005 r.e. fahr muc.

Sembach, Neue Möbel, Stuttgart 1982, p. 147; Fahr brochure, np.

€ 1.000 - 1.500



87

**ERCO LIGHTING GMBH, LUEDENSCHIED
2 TABLE LIGHTS, C. 1960**

H. 16 cm, Ø 13 cm. Metal rods, chrome-plated, sheet metal, painted white, plastic, black.

€ 700 - 800



88

**ILSE MÖBEL, USLAR
SMALL LIQUOR CABINET, 1960S**

H. 53 x 60 x 45 cm. Wooden box construction, chip-board, laminated black and white, teak veneer, square metal tube, painted black. Marked: Manufacturer's branding.

€ 800 - 900

89

**DIETER RAMS
THREE-SEATER SOFA '620', 1962**

H. 86 x 210 x 84 cm. Made by Vitsoe & Zapf, Kronberg. Plastic, white, brown leather. Burkhardt/Franksen (eds.), Design: Dieter Rams &, Berlin 1980, p. 167.

€ 2.000 - 2.500





90

**DIETER RAMS
'620' EASY CHAIR, 1962**

H. 62 x 85 x 75 cm. Made by Vitsoe & Zapf, Kronberg. Plastic, white, brown leather.
Burkhardt/Franksen (eds.), Design: Dieter Rams &, Berlin 1980, p. 167.

€ 900 - 1.500



92

**HERBERT HIRCHE
TV-SET 'FS 6', 1963**

H. 51 (with frame 101.5) x 74 x 37.5 cm. Made by Braun AG, Frankfurt/Main. White plastic, wooden box construction, teak veneer, turning knobs and pushbuttons made of gray plastic, square metal tube, lacquered black. Marked: Model and manufacturer's information.

Klatt/Staeffler, Braun+Design Collection, Hamburg 1995, p. 97.
€ 1.500 - 1.800



91

**DIETER RAMS
'CSV 13' AMPLIFIER, 1962, 'CET 15' TUNER, 1962,
'PCS 51' RECORD PLAYER, 1965**

H. 10.5 x 40 x 33 cm; H. 11 x 20 x 33.5 cm; H. 20.5 x 41 x 32 cm. Made by Braun AG, Frankfurt/Main. Sheet aluminum, lacquered gray and grayish-white, wood, lacquered gray, translucent plexi-glass. Marked: BRAUN, model numbers.

'CET 15' mit Stereo board.

Klatt / Staeffler, Braun + Design Collection, Hamburg 1995, p. 60, p. 61, p. 65, p. 80.

€ 1.500 - 2.000

93

**SCHLAPPMÖBEL, NEU-ANSPACH
2 'CANTO' ARMCHAIRS, C. 1965**

H. 79 x 61 x 60 cm. Beech wood slats, black leather.

€ 600 - 700





94

**WALTER ZEISCHEGG
10 'SINUS' ASHTRAYS, 1966/67**

H. 5 cm, Ø 13 cm. Made by Helit, Kierspe. Plastic, multicolored. Marked: manufacturer's stamp.

Exh. cat. Plastics + Design, Neue Sammlung Munich, Munich 1997, p. 93. Image online.

€ 400 - 450

95

**MAUSER-WERKE, WALDECK
2 GARDEN CHAIRS, 1950S**

H. 72.5 x 57 x 60.5 cm. Metal rods, painted white.

€ 600 - 700



96

**GERMANY
4 GARDEN CHAIRS AND TABLE,
C. 1955**

Armchairs: H. 76.5 x 60.5 x 63 cm; Table: H. 68.5 cm, Ø 99.5 cm. Tubular metal, sheet metal, painted white, imitation leather, red, clear glass.

€ 1.800 - 2.500

97

**ERLAU WERKE, AALEN
6 GARDEN CHAIRS, 1960S**

H. 77 x 64.5 x 60 cm. Made by Erlau Werke, Aalen. Metal rods, painted white. Stackable.

€ 1.000 - 1.500



**GÜNTHER BEHNISCH & PARTNER;
FREI OTTO; OTL AICHER
THREE-DIMENSIONAL MODEL OF
THE OLYMPIC AREA MUNICH 1972**

Three-dimensional model of the Olympic area 1972 with Olympic stadium, Olympic tower, Olympic village and other Olympic venues.

Scale: 1: 1000. H. 40 x 102.5 x 175.5 cm.
Model built by R. Augustin and G. Ott.
Relieved landscape of plastic, buildings and trees of wood, tent roof of drawn plastic, pylons of aluminum, foils. Marked: Architects and associates.

It is not known how many pieces of the model were actually produced, but the number may have been in the low double digits. They were publicly displayed in some German cities before the games. One of the models was presented in the entrance area of the Olympic Tower for a long time.

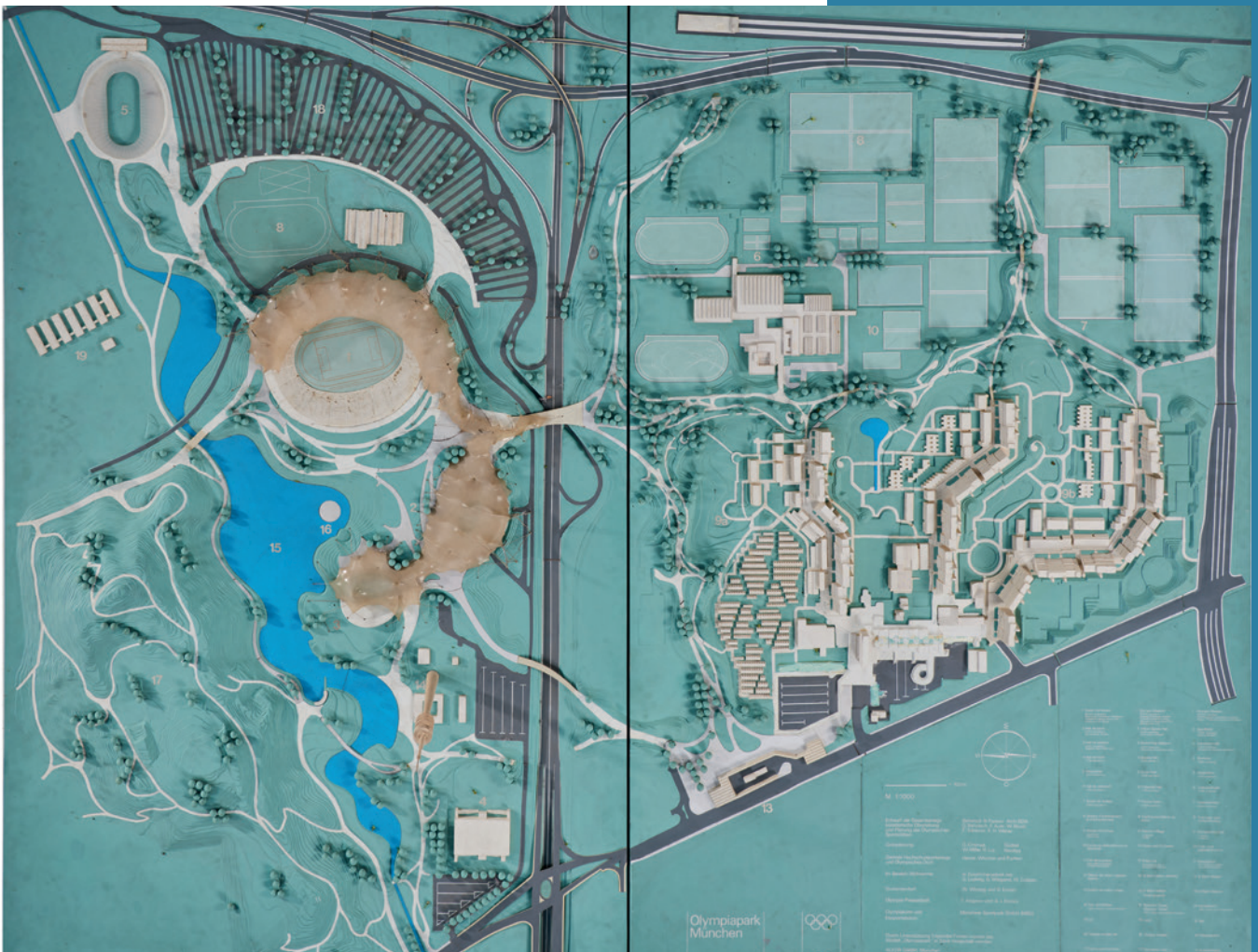
€ 4.000 - 5.000

Otl Aicher (*Ulm 1922 - 1991 Rotis*) is one of the most important German graphic designers of the 20th century. Together with his wife Inge Aicher-Scholl and Max Bill he founded the Hochschule für Gestaltung (HfG) Ulm, which existed from 1953-68. 1967-72 Aicher was appointed design officer for the Olympic Games in Munich and entrusted with its appearance. Aicher's pictograms, which are internationally recognized to this day, the famous spiral, also the coloring of the athletes' and staff's clothing at the games, all posters and paraphernalia are still immediately recognizable today.

Architect Günther Behnisch (Lockwitz 1922 - 2010 Stuttgart) and his partners were responsible for designing the buildings on the Olympic site. Among other things, he was responsible for the plenary hall of the German Parliament Building in Bonn, 1992.

The tent roof of the Olympic Hall designed by Frei Otto (Siegmar 1925 - 2015 Leonberg), conceived as early as 1967 for the World Exhibition in Montreal, was already avant-garde at the time and remains unrivaled to this day. With Günther Grzimek (Cologne 1915 - 1996 Biberach a.d. Riss) as landscape designer, the Olympic site finally became the crowd puller it still is today.

The names of these architects and designers are still associated with the Olympic Games in Munich today, 50 years later.





99

99

GERMANY

10 GERMAN TV-TOWER MODELS, 1960S-1980S

H. 12.5-126 cm. Aluminum, brass, steel, iron, copper, wood, plastic, plexiglass.

One tower with built-in light.

€ 1.200 - 1.800

100

OTL AICHER; HERMANN AY

2 SKETCHES AND COVER LETTER 'OLYMPIC MASCOT WALDI', 1970

21 x 30 cm. Felt pen and ballpoint pen on paper; typewriter on paper.

The mascot for the 1972 Olympic Games was manufactured and distributed in various sizes and materials. Sheet of one sketch torn on the left side, with a slight loss.

€ 1.700 - 1.800



100

101

OTL AICHER ET AL

INVITATION FOLDER WITH SILHOUETTE OF THE MUNICH OLYMPIC STADIUM, C. 1972

30 x 28.2 cm. Aluminum sheet, paper and tracing paper with the Olympic Games logo.

Image online.

€ 600 - 700

102

BEHNISCH & PARTNERS, MUNICH

PHOTO DOCUMENTATION: OLYMPIC ARCHITECTURE AND FURNISHING, C. 1970

The folder contains 35 transparent foils with 33 original black and white photographs of different sizes of the Behnisch & Partner team, Munich, of the buildings and the furniture for the XX Olympic Games in Munich. Partially stamped, typewritten and handwritten. Divided into four parts with typewritten sheets.

Also included: reference for the former employee of the architects Behnisch & Partner, Munich, Ulrich Zahn, dating March 1972.

€ 700 - 800



102

103

OTL AICHER

'ROTIS' BAR STOOL, 1971/72

H. 70 cm, Ø 47 cm. Made by Siegel, Günzburg (attr.). Tubular metal, sheet metal, chrome plated, black leather.

Otl Aicher had only 30 of this stools made.

They were used in his private home and studio in Rotis.

€ 900 - 1.200



104

OTL AICHER

'ROTIS' TABLE WITH 4 FOLDING CHAIRS, 1971/72

Table: H. 64 x 160 x 119.5 cm; Chairs: H. 78 x 60.5 x 57.5 cm. Made by Dietiker AG, Stein/Rhine (attr.). Table: solid coniferous wood; Chairs: beech wood, beech plywood. Marked: Manufacturer's label (chairs).

€ 4.000 - 5.000



"The 'pictogram' language for the Munich Olympics in 1972, the further development of the Lufthansa 'crane', the appearance of the ZDF in the 1970s. They all have one thing in common: their origins in the offices of Otl Aicher (1922-1991). Co-founder and temporary rector of the Ulm 'hochschule für gestaltung' (hfg), he shaped graphic design in Germany - still noticeable today. Less well known: Otl Aicher also developed furniture, including some of which only very few were made, namely those that Aicher designed for his own last place of residence and work, Rotis near Leutkirch. [...]"

(Zitat: Julian Aicher)

105

PETER GHYCZY
'COLUMBUS' EGG' CHAIR, 1968

H. 48-103 x 74 x 83 cm. Made by Reuter Product Design GmbH. Polyester, reinforced with fiberglass, painted red, foam rubber upholstery, black cover.

Fabric renewed.

Fiell (eds.), 70s Decorative Art, Cologne 2000, p. 415; exh. cat. Vom Schenken und Sammeln, 125 Jahre Kunstgewerbemuseum Dresden, Dresden 2001, p. 213.

€ 600 - 700

106

PETER GHYCZY
LOUNGE CHAIR 'GN2', 1970

H. 69 x 70 x 75 cm. Made by Reuter Produkt Design GmbH, Form & Life Collection, Lemförde. Plastic, reinforced with Fiberglas, painted black. Marked: manufacturer's label.

Fiell (eds.), 70s decorative art, Cologne 2000, p. 414.

Image online.

€ 400 - 450



107

INGO MAURER
3 'ML 180' - 'LANGE BERTA'
FLOOR LAMPS, 1970

H. 178 cm. Made by Design M, Ingo Maurer, Munich. Chrome-plated sheet metal, tubular metal, acrylic glass.

Bauer (ed.), Ingo Maurer Making Light, Munich 1992, p. 58.

€ 3.000 - 4.000





108

INGO MAURER

2 'TIFFANY' TABLE LAMPS - MODEL I, 1967

H. 75-76 cm, Ø 42-45 cm. Made by Design M, Ingo Maurer, Munich. Clear glass, aluminum sheet, fabric shade, cream-colored.

Exh. cat. Ingo Maurer. Making Light, Munich 1992, p. 61, p. 248.

€ 800 - 900

109

INGO MAURER

2 'TIFFANY' TABLE LAMPS - MODEL II, 1975

H. 57-59 cm, Ø 40-46 cm. Made by Design M, Ingo Maurer, Munich. Glass, clear, aluminum sheet, fabric shade, cream and beige.

Exh. cat. Ingo Maurer. Making Light, Munich 1992, p. 61, p. 248.

Image online.

€ 600 - 700

110

GÜNTER BELTZIG

'FLORIS' TABLE, 1967/68

H. 61.5 cm, Ø 77.5 cm. Made by BBD, Brothers Beltzig Design, Wuppertal. White fiberglass reinforced polyester.

With the Floris chair, Günter Beltzig walked a fine line between everyday object and sculpture. The iconic chair is reminiscent of both a human figure and a pistil while at the same time enabling ergonomic sitting. The 'Floris' table offered here was only produced in a very limited edition.

Exh. cat. Experiment 70, Ingolstadt 2002, p. 26.

€ 2.200 - 2.500



111

**GERMANY
WALL MIRROR, 1970S**

Ø 47 cm. Sheet steel, spirals, plate glass.
€ 450 - 500



112

**HELEN VON BOCH; FEDERIGO FABBRINI
'BOMBA' PICNIC CROCKERY WITH CUTLERY, 1972**

23 pieces of crockery + 16 pieces of cutlery. Crockery set: 2 bowls: H. 11.7 cm, Ø 25.5 cm; jug: H. 13 cm; 5 mugs: H. 7.5 cm; 4 plates: Ø 18 cm; 5 dinner plates: Ø 25 cm; 6 soup plates: Ø 25 cm. Cutlery: 4 tablespoons, fork, knife and teaspoon. L. 9.6-19.5 cm. Made by Villeroy & Boch, Mettlach. Melamine, white, orange, pink and violet, stainless steel. Marked: manufacturer's stamp.

In original string bag.

Erlhoff (ed.), Deutsches Design 1950-1990, Munich 1990, p. 187.

€ 1.000 - 1.200



113

**HELEN VON BOCH; FEDERIGO FABBRINI
'BOMBA' CUTLERY, 1972**

16 pieces: 4 tablespoons, fork, knife and teaspoon, each. L. 9.6-19.5 cm. Made by Villeroy & Boch, Mettlach. Stainless steel. Marked: manufacturer's stamp.

Erlhoff (ed.), Deutsches Design 1950-1990, Munich 1990, p. 187.

€ 350 - 500

114

**HORST HEYDER; HANS FIEDLER
ARMCHAIR FROM THE PALACE OF THE REPUBLIC IN
BERLIN, 1973-76**

H. 71 x 63 x 49 cm. Made by VEB Vereinigte Polstermöbelindustrie, Oelsa-Rabenau. Tubular metal, chrome-plated, red textile cover.

€ 500 - 600





115

**KALMAR FRANKEN KG
WALL LIGHT, 1970S**

H. 8.5 x 132 x 6 cm. Tubular metal, sheet metal, chrome-plated, glass, white. Marked: manufacturer's label.

€ 400 - 500

116

**OTTO ZAPF
'WINGSET' SHELVING SYSTEM, 1977**

consisting of 12 shelves: five shelves: 120 x 40 cm, four shelves: 120 x 25 cm, four shelves: 150 x 25 cm; Three attachment bars: L. 96 cm, L. 127 cm, L. 225 cm. Made by Vieler, Iserlohn. Aluminum, aluminum sheet, painted black.

Not pictured.

€ 900 - 1.200

117

**OTTO ZAPF
'WINGSET' SHELVING SYSTEM, 1977**

consisting of 21 shelves: three shelves: 120 x 40 cm, four shelves: 120 x 25 cm, 6 shelves: 90 x 25 cm, 2 shelves: 150 x 40 cm, 6 shelves: 150 x 25 cm; Four fixing bars: three bars: L. 270 cm, one bar: L. 225 cm. Made by Vieler, Iserlohn. Aluminum, aluminum sheet, partially chrome-plated.

The image is for illustrative purposes only.

€ 900 - 1.200



118

**INGO MAURER; DONATA SAVOIE
'SAVOIE' CEILING LIGHT, 1979**

H. 200 cm. Made by Design M, Ingo Maurer, Munich. Porcelain, silicone cable, transparent, light bulb.

Dessecker, Ingo Maurer. Designing with light, Munich 2008, p. 40.

€ 400 - 500

119

**INGO MAURER
2 TABLE / FLOOR LIGHTS 'TSCHING 3' AND 'TSCHANG 1', 1979**

H. 34-70 cm, Ø 21-37 cm. Made by Ingo Maurer, Design M, Munich. Glass, colorless and white. Marked: Label: vetri murano.

Dessecker, Ingo Maurer. Designing with light, Munich 2008, p. 181.

€ 800 - 1.200

Helme Heine is one of the great masters of children's stories. Since the 1970s, the Berlin artist and book author has enchanted the hearts of countless children and their parents worldwide with his picture books. Heine's international career began with the black-and-white book 'Elefanteneinmaleins', published in 1976. Since then, numerous children's books have been published, followed by books for adults, audio books and musicals. Now we can discover a new side of his broad creative spectrum - that of the designer. The furniture designed for a children's book launch by Middelhaue Publishing House once again reflects the author's unrestrained imagination, which now finds its application in everyday design. Why not create a furniture orchestra in which cabinets become vibrating concert grand pianos and drums, and in which even the dining table dances on its four legs? Why not bring in friends Johnny Mauser, Franz von Hahn and der dicke Waldemar from the popular book stories to join in this celebration of joie de vivre? The animal figures inlaid on the chair seats, just like the glowing candles or the open book on the cabinet, give the feeling that this furniture leads its own life and at the same time you are invited to discover it and make it useful in your adventurous everyday life, no matter how old you are.

We are pleased to offer the artistic furniture objects of 80-year-old Helme Heine, who is young at heart. They look as if they have sprung from one of his fairy tales and will undoubtedly enliven living spaces with imagination and curiosity.



120

**HELME HEINE
SIDEBOARD 'DRUM', C. 1980**

H. 87.5 x 120 x 34 cm. Wooden box construction, fruitwood veneer, sheet metal, silver-plated, square steel tube.

€ 900 - 1.200

121

**HELME HEINE
TABLE, C. 1980**

H. 75 x 217 x 90 cm. Fruitwood, square steel tubes.

€ 1.800 - 2.500





122

**HELME HEINE
6 CHAIRS, C. 1980**

H. 140.5 x 39 x 46 cm. Sheet metal, fruitwood, silver-plated sheet metal inlays.

€ 2.000 - 3.000

123

**HELME HEINE
SHELVING CABINET / BAR 'GRAND PIANO',
C. 1980**

H. 230.5 x 144 x 31.5 cm. Fruitwood veneer, metal profiles, welded, symbol insert made of silver-plated sheet metal.

€ 1.000 - 1.500





124

**SIGRID WYLACH
UNIQUE 'PARALLELO' RUG, 1980S**

Five strips connected with zippers. 198 x 238 cm. Made by Rincklake van Endert, Münster. Wool in various pastel shades, hand-tufted, partially with figures, latex. Marked: RVE Rincklake van Endert, information about purpose, material and manufacture.

The carpet was made as a one-off for an exhibition. Also included: a carpet model, 58 x 39 cm. Label: Textile label Sigrid Wylach Unikate S pattern Rincklake van Endert, information on the material, wool seal.

€ 800 - 1.200



125

MÖBEL PERDU; CLAUDIA SCHNEIDER-ESLEBEN; MICHAEL FEITH

'TRANSALL' TABLE, 1985

H. 73.5 x 170.5 x 81.5 cm. Made by Möbel perdu, Hamburg. Chip board with maple veneer, LEDs, wiring. Marked: Manufacturer's stamp.

Small red LEDs are arranged geometrically in the tabletop; they were battery powered and could be turned on and off with an external switch.

€ 1.500 - 1.800



126

**PETER PRELLER
FLOOR LAMP, 1980S**

H. 108 cm, Ø 56 cm. Made by Tecta, Lauenförde. Tubular metal, sheet metal, painted white. Marked: manufacturer's and designer's information (embossed).

€ 600 - 700

126



127

**FLORIAN SCHULZ
'ST 125 CR' FLOOR-TO-CEILING LIGHT, 1980S**

H. 365.5 (max.) x 224 cm, Ø 37 cm. Made by Florian Schulz Light & Object, Ludwigsburg. Tubular metal, sheet metal, chrome-plated.

Height adjustable.

€ 1.000 - 2.000

128

**FLORIAN SCHULZ
ARC LAMP 'ST 125 CR' FOR WALL MOUNTING, 1980S**

H. 132 cm (max), Ø 37 cm. Boom c. 100-130 cm. Made by Florian Schulz Light & Object, Ludwigsburg. Tubular metal, sheet metal, chrome-plated.

Height adjustable.

€ 900 - 1.500



129

**DRAENERT, IMMENSTAAD (ATTR.)
TABLE, 1990S**

H. 75.5 x 183-263 x 91.5 cm. Sheet metal, painted silver-gray, wood, cherry wood veneer.

Extendable to 263 cm in length.

€ 1.200 - 2.000



130

**FAUXPAS
2 'VIKTOR' CANDLESTICKS, 1980S**

H. 50 cm. Made by Nils Holger Moormann, Aschau. Sheet steel, concrete.

Image online.

€ 400 - 500

131

**RENATE VON BREVERN
DECORATIVE PLATE, 1992**

Ø 43.7 cm. Made by Cocktail, Berlin. Earthenware, polychrome glaze. Marked: R. Brevern, 1992 (incised).

Image online.

€ 250 - 300

132

**TILL BEHRENS
6 'KREUSCHWINGER' CHAIRS, 1983**

H. 100 x 49 x 59,5 cm. Made by Meyer Stahlmöbel, Schwäbisch Gmünd. Steel rods. Marked: manufacturers mark, numbers.

The original design of the construction dates back to 1959, but did not go into serial production until the 1980s.

Fiell (eds.), 1000 Chairs, Cologne 1997, p. 566.

€ 1.800 - 2.200



133

**REINHARD MÜLLER; MEYER VOGGENREITER
RARE LIBRARY INSTALLATION, 1988**

34 pieces. 2 ladders: each H. 238 x 68 x 4 cm; 27 shelves: H. 8 x 33.5 x 33 cm; 5 bookends: H. 22 x 16 x 12 cm. Made by Pentagon, Cologne. Square steel tube, sheet steel.

Included: sales prospectus and purchase documents from 1993.

Cf. exh. cat. Schrill, Bizarr, Brachial. Das Neue Deutsche Design der 80er Jahre, Cologne 2014, p. 121.

€ 6.000 - 8.000



134

**BEATA BÄR, GERHARD BÄR, HARTMUT KNELL
2 CHAIRS, 1994**

H. 74 x 57 x 57 cm. Made by Bär & Knell, Bad Wimpfen, 2000. Recycled plastic. Marked: DKR KUNSTstoff 2000 by Bär + Knell (embossed).
€ 700 - 800

135

**HERBERT H. SCHULTES
'ORBIS' FLOOR LAMP FROM THE PRE-SERIES,
C. 1994**

H. 119,5 cm, Ø 18 cm. Made by Classicon, Munich. Cast metal, sheet metal, painted black, tubular steel, chrome-plated. Provenance: Owned by the packaging designer who created the original packaging for the light.
€ 900 - 1.000

136

**STEFAN HEILIGER
'RELAX CHAIR SOLO' RECLINER, 1996**

H. 98 x 81 x 90-127 cm. Made by WK Wohnen, Rheda-Wiedenbrück; Designo, Dreieich. Tubular metal, sheet metal, anodized silver, leather, black and blue, plastic, black. Fischer, Stefan Heiliger Design. a retro perspective, Stuttgart 2007, p. 109.
€ 600 - 800

137

**STUDIO EOOS; MARTIN BERGMANN, GERNOT BOH-
MANN, HARALD GRÜNDL
'TOGETHER' BENCH, 2004**

H. 78 x 149 x 68 cm. Made by Walter Knoll, Herrenberg. Dark brown leather. Marked: manufacturer's label, manufacturer's textile label.
Image online.
€ 600 - 800





138

INGO MAURER
'BIRDIE' CEILING LIGHT, 2002

H. 89.5 x 60 x 60 cm. Made by Design M, Ingo Maurer, Munich. Sheet metal, metal wires, twisted, silicone cable, transparent, goose feathers, 12-flame.

Also included: 2 replacement bulbs, halogen.

Cat. Ingo Maurer now, Munich nd, p. 97f.

€ 900 - 1.200

139

RALF BRÖG
'MELANCHOLIA' (SCULPTURAL COFFEE TABLE, UNIQUE PIECE), 2019

Oak real wood veneer (on waterproof, glued Gabon plywood), stained black and whitewashed, satin finish, spring hatch opener (stainless steel), lead. H. 50.0 cm. Signed on the base: R. Brög and dated: 2019 (silver fiber pen).

Mint condition.

€ 4.500 - 6.000





140

**ERNST GAMPERL
VASE OBJECT 'NO. 45', 1999**

H. 46.5 cm, Ø 48.5 cm. French ash wood, metal wire. Marked:
Ernst Gamperl, 3/99, no. 45 (incised); frz. Esche (sticker, hand-
written).

€ 7.000 - 8.000





141

**ERNST GAMPERL
BOWL '61/05' 2005**

H. 35.5 cm, Ø 53 cm. Italian oak. Marked: Ernst Gamperl, No. 61/05, 160 J (incised).

Provenance: Acquired directly from the artist in 2005 by the original owner; then private ownership Southern Germany. Watered and cleaned by the artist in 2021.

€ 3.500 - 4.500



IMPRESS

MANAGING DIRECTOR AND AUCTIONEER:

Askan Quittenbaum
+49 89 273702-113
a.quittenbaum@quittenbaum.de

DEPUTY. MANAGING DIRECTOR:

Dr. Claudia Quittenbaum
+49 89 273702-111
c.quittenbaum@quittenbaum.de

SPECIALISTS:

Arthur Floss, Dipl. Betriebswirt FH
Leitung Modernes Design
+49 89 273702-110
arthur.floss@quittenbaum.de

Faridah Younès M.A.
+49 89 273702-115
faridah.younes@quittenbaum.de

JUNIOR SPECIALISTS:

Carina Schlager M.A.
+49 89 273702-10
c.schlager@quittenbaum.de

Elizaveta Leongardt B.A.
+49 89 273702-10
e.leongardt@quittenbaum.de

Eva Stangassinger B.A.
+49 89 273702-10
e.stangassinger@quittenbaum.de

Veit Volwahren M.A.
+49 89 273702-112
veit.volwahren@quittenbaum.de

ASSISTANCE:

Ava Boll B.A.

BOOK KEEPING AND CATALOGUE-ORDER:

Annette Ehrenhardt
+49 89 273702-120
buchhaltung@quittenbaum.de

LOGISTIC AND SHIPPING:

Dirk Driemeyer
+49 89 273702-112
dirk.driemeyer@quittenbaum.de

M2 Logistik
+49 8121 223015
service@m2logistik.de

Mail Boxes Etc.
MBE Lippl Business Service
+49 8131 37 99 132
antique-muc@mb-e-dachau.de

PHOTOGRAPHS:

Jochen Splett
Mirco Taliercio

DESIGN:

Daniela Paringer,
design & print GbR

PRODUCTION AND PRINT:

Peschke Solutions GmbH,
München







QUITTENBAUM
Kunstauktionen München

QUITTENBAUM Kunstauktionen GmbH
Theresienstrasse 60 · D-80333 Munich
Phone 089-27 37 02 10 · Fax 089-27 37 02 122
info@quittenbaum.de · www.quittenbaum.de

