

# ART NOUVEAU ART DECO

Auction 162 B  
10 May 2022





# ART NOUVEAU ART DECO

## AUCTION 162 B

TUESDAY, 10 MAY 2022

4 P.M.

**PREVIEW:  
THERESIENSTR. 60**

Thursday	05.05.	10 a.m. - 6 p.m.
Friday	06.05.	10 a.m. - 6 p.m.
Saturday	07.05.	1 p.m. - 5 p.m.
Sunday	08.05.	1 p.m. - 5 p.m.
Monday	09.05.	10 a.m. - 6 p.m.

**QUITTENBAUM  
Kunstauktionen GmbH**

Manging Director: Askan Quittenbaum  
Theresienstrasse 60 · D-80333 Munich  
Phone (+49) 89-27 37 02 10  
Fax (+49) 89-27 37 02 122  
E-Mail [info@quittenbaum.de](mailto:info@quittenbaum.de)  
Opening Time: Tuesday - Friday  
3 p.m. - 6 p.m.  
By appointment



Mitglied der Initiative  
Datenbank  
kritischer Werke



Bundesverband Deutscher Kunstversteigerer e.V.











52

**52**

**Gabriel Argy-Rousseau, Paris  
'Soucis' vase, 1920**

Slightly expanding cup shape. H. 14.7 cm. Pâte de verre, translucent glass mass, colorless, worry flowers in relief in pink and violet. Wall signed: G. AR-GY-ROUSSEAU (recessed). On the bottom: 7712 (recessed).

Bloch-Dermant, G. Argy-Rousseau, Paris 1990, p. 182, No. 20.06.

€ 5.000 - 6.000

**53**

**Gabriel Argy-Rousseau, Paris  
'Magnolia' pendant, 1924**

6.5 x 4.8 cm. Pâte de verre, translucent glass mass, colorless, magnolia relief in dark red, vanilla yellow and dark green. Signed: GAR (recessed).

Cf. Bloch-Dermant, G. Argy-Rousseau, Paris 1990, p. 202, no. 24.43.

€ 1.000 - 1.200



53





54





55

54

**Gabriel Argy-Rousseau, Paris  
Vase 'Fleurs de Perse', 1924**

Ovoid with gadrooned lip. H. 30 cm. Pâte de verre, translucent glass mass, colorless, slightly yellowish, flowers in relief in orange and stems in blue and brown. Signed in the middle of the wall: G. ARGY-ROUSSEAU (recessed). Marked on the bottom: 18768 (recessed).

Bloch-Dermant, G. Argy-Rousseau, Paris 1990, p. 197, No. 24.10.  
€ 12.000 - 18.000 \*

55

**Gabriel Argy-Rousseau, Paris  
'Primevères' vase, 1924**

H. 17 cm. Pâte de verre, translucent glass gather, colorless, relief decoration with climbing primroses surrounded by pointed medallions. Wall signed: G. ARGY-ROUSSEAU (recessed). Bottom: FRANCE (recessed).

Bloch-Dermant, G. Argy-Rousseau, Paris 1990, p. 196, No. 24.02.  
€ 8.000 - 9.000





56

**Gabriel Argy-Rousseau, Paris  
'Gazelles' vase, 1928**

Bell shape. H, 9.2 cm. Pâte de verre, translucent glass mass, clear, jumping gazelles in relief between stylized flowers in orange and vanilla yellow. Wall signed: G. ARGY-ROUSSEAU (recessed). On the bottom: FRANCE (recessed).

Bloch-Dermant, G. Argy-Rousseau, Paris 1990, p. 216, no. 28.06.

€ 12.000 - 16.000



## Gabriel Rousseau

He adopted the suffix 'Argy' in honor of his wife Marianne Argyriadès. She was his best friend's sister. They all shared a love of Greco-Roman and Egyptian antiquity. Argy-Rousseau was interested in many things, studied at the École de Sèvres, but also completed an engineering degree. Throughout his life, he conducted research in areas as diverse as dental porcelain and color photography. In his private life he always surrounded himself with creative personalities, including Henri Cros, who had long been known for his glass works using the 'pâte-de-verre' technique. Argy-Rousseau began to work successfully with the material even before the First World War, after the war he founded a glass factory that had 20 employees at its peak. He developed his own technique for producing his ideas:

Argy-Rousseau first modeled his sketched idea in plaster, which was then covered with wax. A refractory hollow mold consisting of several parts was then molded from this model in several work steps.

He even produced his own glass. It was crushed into powder and colored by the addition of metal oxides. With the help of fine brushes, the now liquid glass mass, which had been washed several times, was applied precisely to the walls of the refractory mould. Two more layers followed, one after the other, to create strength and at the same time prevent air bubbles from forming. The last layer was resin to further fix the pâte de verre. The model was then placed upside down in a wood-fired oven, where the piece was then fired at high temperatures. After cooling, the mold was removed, the now solid object cleaned with acid and the last bumps polished off with a wheel. This is how these wonderful, transparent, at the same time colorful, delicate-looking objects came into being.



57

**Gabriel Argy-Rousseau, Paris  
'Arbres' table light, 1926**

Spherical lampshade with stylized leaves in relief.  
Straight, four-branched shaft on a flat, rounded base.  
H. 36.5 cm, Ø 16.5 cm. Pâte de verre, translucent  
glass mass, colorless, leaves in relief in seal red and  
dark brown. Signed: G. ARGY-ROUSSEAU, FRANCE  
(recessed). Blackened wrought iron foot.

Bloch-Dermant, G. Argy-Rousseau, Paris 1990, S. 210,  
Nr. 26.15.

€ 42.000 - 48.000 \*





**58**

**Cristallerie de Baccarat, Paris  
3 flacons, 1920s**

H. 14-17 cm. Crystal glass, colorless and raspberry red.  
Cut decor. Sales label Nantes on 2 flacons.  
Image online.

**€ 600 - 700**

**59**

**Amédée de Caranza & Jeanne Duc  
'Lierre' vase, c. 1900**

H. 18.8 cm. Colorless glass, painted with reduction  
colors, ivy motif, metallic luster. Signed: Duc A. de  
CARANZA (lustered).

**€ 1.500 - 1.800**



60

**60**

**Pierre D'Avesn, Croismare  
Vase, c. 1930**

H. 20.9 cm. Smoke brown molded glass. Decorated with birds in the branches. Inscribed: P. D'AVESN FRANCE (raised).

**€ 1.600 - 1.800**

**61**

**Pierre D'Avesn, Croismare  
'Poissons Saint-Pierre' vase, c. 1930**

Spherical shape on a cylindrical stand with a bell-shaped opening. H. 27 cm. Form-pressed cased glass, colorless and smoke gray, surrounding relief decoration with St. Peter's fish, greenish patina. Relief signature on the bottom: P. D'AVESN.

**€ 1.600 - 2.200**



61





62

**62**

**Daum Frères, Nancy  
Flacon, c. 1892**

H. 16.5 cm. Overlaid glass, clear/gradient pink. Etched, enameled and gilded chrysanthemum decoration on a rough background; front depiction of a couple on a swing in a landscape between trees, in black solder. Signed: Daum, Cross of Lorraine, Nancy (gold signature).

Cf. Pétry/Maury, Daum dans les musées de Nancy, Nancy nd., No. 17.

€ 3.000 - 3.500

**63**

**Daum Frères, Nancy  
Small vase, c. 1892**

H. 13.4 cm. Cased glass, colorless/violet. Floral decor, etched, enameled and gilded. Twelve melted cabochons as pistils, applied curled ribbons. Bottom signed: Daum, Cross of Lorraine, Nancy (residue of the gold signature).

Cf. Pétry, Daum dans les musées de Nancy, Nancy 1989, p. 24.

€ 2.200 - 2.600



63



64

**Daum Frères, Nancy**  
**'Tulips' vase, 1893**

Rounded body that bulges strongly towards the shoulder and has a drawn-in neck. H. 17 cm. Cased glass, colorless, red and green. Fully cut decoration with tulips in fine engraving, etched, structured background. Signed in the polished outline: Daum Nancy, Cross of Lorraine (engraved, gilded).

This model was presented at the Chicago World's Fair in 1893. Bardin, *Daum une industrie d'art lorraine*, Metz 2004, p. 121 (historical photo of the manufactory's presentation at the Chicago World's Fair in 1893, vase in the foreground on the right with almost the same decoration and almost the same shape).

€ 6.800 - 7.800





65

**65**

**Jacques Gruber  
'Aurore, Platanes' Vase, 1893**

Spherical shape with a tripartite lip, the so-called 'boule cabossée'. H. 14 cm, Ø 20.5 cm. Made by Daum Frères, Nancy. Cased glass, colorless, tinted honey-yellow, opalescent. Plane tree decoration etched in several steps with gold heightening. Bottom signed: Daum, Cross of Lorraine, Nancy (gold signature).

Ricke/Schmitt, Gerda Koepff Glass Collection, Kunstmuseum Düsseldorf, Munich 1998, p. 177.

€ 1.500 - 1.800

**66**

**Jacques Gruber  
Bowl 'Aurore, Platanes', with silver mounting, 1893**

Spherical shape with a tripartite mouth, so-called 'boule cabossée'. H. 15.4 cm, Ø 20.5 cm. Made by Daum Frères, Nancy. Cased glass, colorless, tinted honey-yellow, opalescent. Plane tree decoration etched in several steps with gold heightening. Bottom signed: Daum, Cross of Lorraine, Nancy (gold signature). Mounted silver foot from Malvézieux Ainé, Paris. Marked: Minerva head, workshop mark in the rhombus.

Ricke/Schmitt, Gerda Koepff Glass Collection, Kunstmuseum Düsseldorf, Munich 1998, p. 177.

€ 2.200 - 2.800



66



67

**Daum Frères, Nancy**

**Vase 'Mythologie', um 1894-97**

H. 25.3 cm. Cased glass, colorless, with orange powder inclusions and violet-black. Etched decor with Greek/Egyptian birds, animals and depictions of people on a rough background. Frieze below the lip and above the stand with stylized tendrils. Bottom signed: Daum, Cross of Lorraine, Nancy (black solder).

**€ 7.000 - 9.000**







68

**68**

**Daum Frères, Nancy  
Vase 'Iris', 1895-1900**

H. 10 cm. Cased glass, light blue opalescent, colorless and violet. Etched decor, motif with irises, cut flower motifs. Bottom signed: DAUM NANCY, Cross of Lorraine (engraved).

€ 900 - 1.200

**69**

**Daum Frères, Nancy  
'Bleuets' vase, c. 1895**

H. 10.5 cm, Ø 13 cm. Cased glass, colorless and opalescent yellow; All-over etched motif with blooming cornflowers contoured in needle etching and heightened with gold. Signed on the bottom: Daum Nancy, Cross of Lorraine (gold signature).

Cf. Hilschenz-Mlynek/Ricke, Glass Collection Hentrich, Kunstmuseum Düsseldorf, 1985, p. 78, no. 41.

€ 900 - 1.200



69

**70**

**Daum Frères, Nancy  
'Chardons de Lorraine' vase, c. 1896**

H. 12 cm. Overlaid glass, colorless and pink. Etched, engraved and gilded. Motif with blooming thistles on a rough back-ground. Bottom signed: Daum, cross of Lorraine, Nancy (gold signature).

Cf. Hilschenz-Mlynek / Ricke, Hentrich Glass Collection, Kunstmuseum Düsseldorf, 1984, No. 38.

€ 500 - 600

**71**

**Daum Frères, Nancy  
'Violettes' vase, c. 1896**

H. 12 cm. Overlaid glass, colorless and purple. Etched, engraved and gilded. Motif with violets on a rough back-ground. Bottom signed: Daum, cross of Lorraine, Nancy (gold signature).

Small chip in one corner.

€ 500 - 600



70



71



72

72

**Daum Frères, Nancy**  
**'Laurier rose' vase, c. 1896**

H. 11.3 cm. Overlaid glass, colorless and honey-colored. Etched, engraved and gilded. Motif with oleander on a rough background. Bottom signed: Daum, cross of Lorraine, Nancy (gold signature).

€ 500 - 600

73

**Daum Frères, Nancy**  
**'Violettes, papillon' vase, 1894**

H. 13.4 cm. Cased glass, colorless and violet, partially with opalescent white, streaked powder inclusions and shattered silver foil between the layers. Etched and finely carved decoration with a violet and a butterfly, the background completely reworked with the wheel. Foot with stylized decoration. Signed on the bottom: Daum Nancy with plant (engraved, gold rubbed, in front of a Martelé-cut background).

Small shell-shaped crack under the base.

This model was presented at the 'Art décoratif et industriel lorrain' exhibition in Nancy in 1894. Ricke/Schmitt, Gerda Koepff glass collection, Kunstmuseum Düsseldorf, Munich 1998, p. 60, historical photo, top right (there 'Violettes fanées', fading violets).

€ 900 - 1.200

74

**Daum Frères, Nancy**  
**Candy jar with mounting, c.1897**

H. 18.8 cm. Glass, colorless/green. Etched decoration with strawberries heightened with gold. Signed: workshop mark with cross of Lorraine and addition Lorraine (gold, handwritten). Mounting, handle and lid made of silver, metal and copper sheet with reliefed, stylized floral decoration. Marked: workshop mark RP in the lozenge, boar's head (faint).

Image online.

€ 500 - 600

75

**Daum Frères, Nancy**  
**Small 'Delft' jug, c. 1898**

H. 12.5 cm. Cased glass, milky opalescent and colorless. Etched motif of a Dutch coastal landscape with a village and sailing boats in black solder. Bottom signed: Daum Nancy, Cross of Lorraine (gold signature).

€ 900 - 1.200

76

**Daum Frères, Nancy**  
**Miniature box and cover 'Le pot de terre, le pot de fer', 1898**

With eyelet handles. H. 3 cm. Cased glass, opal white and colorless, etched, decor in black solder, motif based on La Fontaine's fable, 'The earthen and the iron pot', polychrome enameled flowers on the lid, heightened with gold. Faint trace of the gold signature Daum Nancy, Cross of Lorraine on the bottom.

Bardin, Daum, une industrie d'art lorraine, Metz 2004, p. 166f., on the subject of La Fontaine's fables at Daum Frères.

€ 1.200 - 1.400



73



75



76





77

**Daum Frères, Nancy  
'Orchidées' vase, 1900-03**

H. 25.5 cm. Overlaid glass, colorless, opaline and purple. Etched decor with orchids. Bottom signed: DAUM, cross of Lorraine, NANCY with plant (needle-etched and gilded).

€ 1.600 - 2.200

78

**Daum Frères, Nancy  
'Martelé'-Vase 'Bleuets', c. 1900-03**

H. 9.4 cm. Cased glass, milky opalescent, colorless and violet. Etched decoration with cornflowers, the background reworked in Martelé cut. Bottom signed: DAUM NANCY, Cross of Lorraine (engraved and gilded).

€ 1.600 - 1.800



**79**

**Henri Bergé  
'Cardères sauvages' vase, c. 1900**

H. 42 cm. Made by Daum Frères, Nancy. Cased glass, milky opalescent and colorless, brownish enamel fusions (Vitrifications) marbled over the entire surface with yellow, orange-brown and green marbles. Thistle flower decoration etched in several steps on a rough background. Signed on the bottom: Daum Nancy, Cross of Lorraine (engraved). Cat. Daum Collection, Tokyo 1987, no. 197.

**€ 2.200 - 2.800**







80

**Daum Frères, Nancy**  
**Vase 'Daturas', c. 1900**

H. 13.5 cm, Ø 22 cm. Cased glass, colorless, lemon yellow and green powder inclusions in the lower area and light bluish in the upper area. Etched, gold-contoured decor painted in delicate colors, surrounding motif with hanging flowers of the common datura (angel's trumpet), volute tendrils heightened with gold at the mouth, ice-glass-like ground. Signed on the bottom: Daum Nancy, Cross of Lorraine (residue of the gold signature).

Cf. exh. cat. Daum Nancy, Maître verriers, Zurich 1986, No. 31; Cat. Daum Collection, Paris 2004, No. 184f. (Decor).

€ 3.800 - 4.800

81

**Daum Frères, Nancy**  
**Miniature 'Hyacinthes' vase, c. 1900**

H. 3.9 cm. Cased glass, colorless, with white, green and dark blue powder inclusions, etched in relief, with enameled decoration in blue and green with hyacinths; lower part painted with gold. Signed: Daum, Cross of Lorraine, Nancy (residue of the gold signature).

€ 800 - 900

82

**Daum Frères, Nancy**  
**Miniature 'Hyacinthes' vase, c. 1900**

H. 4 cm. Cased glass, colorless, with yellow, amber-brown and dark blue powder inclusions, etched in relief, with enameled decoration in red, violet and green with hyacinths; lower part painted with gold. Signed: Daum, Cross of Lorraine, Nancy (gold signature).

€ 900 - 1.200



81



82

83

**Daum Frères, Nancy**  
**Tall 'Daturas' vase, c. 1900**

Long, slender baluster on a trumpet foot. H. 61 cm. Cased glass, colorless, lemon yellow and green powder inclusions in the lower area and light bluish in the upper area. Etched, gold-contoured decor painted in delicate colors, surrounding motif with hanging flowers of the common datura (angel's trumpet), ice-glass-like background. Signed on the bottom: Daum Nancy, Cross of Lorraine (gold signature).

Cf. Exh. cat. Daum Nancy, Maître verriers, Zurich 1986, No. 31; Cat. Daum Collection, Paris 2004, No. 184f. (Decor).

**€ 10.000 - 15.000**







84

**84**

**Daum Frères, Nancy  
'Bleuets' vase with handles, 1901**

H. 10.6 cm. Overlaid glass, colorless, yellow and purple powder inclusions. Etched and enameled decor, motif with blooming cornflowers, heightened with gold. Foot with a frieze with cornflowers in front of a gilded background. Signed: Daum Nancy, cross of Lorraine (raised), signet on the bottom (embossed).

Restored.

Cf. Cat. Daum Collection du Musée des Beaux-Arts de Nancy, Paris 2000, no. 255.

**€ 1.000 - 1.200**

**85**

**Daum Frères, Nancy  
Small 'Myosotis' vase, 1901**

H. 8.3 cm. Cased glass, colorless, lemon yellow and violet powder inclusions. Etched, enameled and gilded decoration with forget-me-nots. Signed on the bottom: Daum, Cross of Lorraine, Nancy (residue of the gold signature).

Cf. Cat. Daum Collection du Musée des Beaux-Arts de Nancy, Paris 2000, No. 255.

**€ 3.000 - 3.500**



85



86

**86**

**Daum Frères, Nancy**

**Miniature 'Crépuscule neige' or 'Paysage hiver' vase, c. 1902**

H. 4.2 cm. Cased glass, colorless, with yellow and orange powder inclusions. Etched decoration heightened with black solder and enameled in white, motif with a wintry forest landscape. Bottom signed: Daum, Nancy, Cross of Lorraine (etched).

€ 1.200 - 1.400



87

**87**

**Daum Frères, Nancy**

**Small 'Crépuscule neige' or 'Paysage d'hiver' vase, c. 1902**

H. 8 cm. Cased glass, colorless, lemon-yellow powder inclusions in the lower area and orange powder inclusions in the upper area. Etched decor heightened with black solder, partially enameled white. Circumferential motif of a snow-covered tree landscape in the strongly changing light of the setting sun, rough background. Bottom signed: DAUM, Cross of Lorraine, NANCY (black solder).

€ 1.500 - 1.800

**88**

**Daum Frères, Nancy**

**'Crépuscule neige' or 'Paysage hiver' vase, c. 1902**

Cylindrical with a wavy lip. H. 14 cm. Cased glass, colorless, with yellow and orange powder inclusions. Etched decoration heightened with black solder and enamelled in white, motif with a wintry forest landscape. Signed on the bottom: Daum, Nancy, Lothringer Kreuz FR (Schwarzlot).

€ 3.200 - 3.800



88





89

**Daum Frères, Nancy**  
**'Crépuscule neige' or 'Paysage hiver' vase, c. 1902**

H. 8.8 cm. Cased glass, colorless, with yellow and orange powder inclusions. Etched decoration heightened with black solder and enameled in white, motif with a wintry forest landscape. Signed on the bottom: Daum, Nancy, Cross of Lorraine (engraved).

€ 2.200 - 2.600

90

**Daum Frères, Nancy**  
**'Crépuscule neige' or 'Paysage hiver' vase, c. 1902**

H. 11.5 cm. Cased glass, colorless, with yellow and orange powder inclusions. Etched decoration heightened with black solder and enameled in white, motif with a wintry forest landscape. Signed on the bottom: Daum, Nancy, cross of Lorraine RH (black solder).

€ 2.200 - 2.600

91

**Daum Frères, Nancy**  
**'Crépuscule neige' or 'Paysage**  
**hiver' vase, c. 1902**

H. 8 cm. Cased glass, colorless, with yellow and orange powder inclusions. Etched decoration heightened with black solder and enameled in white, motif with a wintry forest landscape. Signed on the wall: Daum, Nancy, Cross of Lorraine (Schwarzlot).

€ 2.200 - 2.600



92

92

**Henri Bergé (attr.)**  
**'Sorbiers' bowl, c. 1903**

H. 8.7 cm, Ø 20.7 cm. Cased glass, milk whitish, greenish-yellow and oxblood-red powder inclusions, enamel fusions in white and green. Motif with rowan berries, heightened with enamel. Signed: DAUM NANCY, Cross of Lorraine (raised).

Cf. Daum, Daum Maîtres verrier, Lausanne 1980, p. 77, drawing by Henri Bergé, the motif was first executed in 1902, cf. Daum, cent ans de verrerie d'art, Nancy 1979, cover.

€ 1.800 - 2.400



93

93

**Daum Frères, Nancy**  
**'Geranium' vide poches, c. 1905**

H. 4.3 cm, Ø 15.3 cm. Cased glass, clear, yellow powder inclusions, milk white, red, green and gray enamel fusions. Etched pattern with geraniums on rough background, needle etching. Signed: Daum Nancy, cross of Lorraine (engraved).

€ 1.400 - 1.800





94

**Henri Bergé**  
**'Iris' vase, 1906-12**

In blossom shape with asymmetrical top rim. H. 31 cm. Made by Daum Frères, Nancy. Overlaid glass. In the lower area with deep blue, above that with bluish white marbled powder inclusions. Elaborate sculptural glass applications. One large and one smaller iris blossom in blue, one daffodil in yellow and elongated leaves in green with yellow spots. The pond landscape in sculptural relief finished in elaborate wheel carving. Foot in overlaid glass with green powder inclusions and applications. Signed on the node: DAUM NANCY, cross of Lorraine (engraved).

The vase is a rarity of the highest artistic and technical quality. Its asymmetrical and irregular shape is extraordinary and shows a special sculptural pursuit of art. In the international museum landscape and in specialist literature, only a few vases or cups with a similar shape are known. The comparable specimens in the Hentrich Glass Museum in Düsseldorf or in the Musée de l'Ecole de Nancy are each decorated with different decors.

It can be assumed that these specially shaped and technically complex manufactured glass objects were produced as individual pieces. The 'Iris' vase is very likely to be a one-of-a-kind specimen, which was made as a testimony to special craftsmanship for an international exhibition or exhibition in the field of handicrafts between 1910 and 1912.

The 'Iris' vase, designed in the shape of a stylized flower, adorns a sketched pond landscape with irises and a daffodil growing on the banks, which are designed as reliefs made of colored glass. The particularly complex technique of application requires repeated heating of the vessel that serves as a carrier for the plants with their colored flowers, buds and leaves. After the three-dimensional decoration had cooled down, it was reworked with the high-cut grinding wheel.

The vase is certainly an extraordinary achievement by the glassworks, in which the design of the shape has been enhanced by the free shaping of the decoration. With decorative glasses like the 'Iris' vase, the Daum brothers and their colleagues were able to step out of the often alleged shadow of Emile Gallé.

Cf. Ricke/Schmitt, Glass collection Gerda Koepff, Kunstmuseum Düsseldorf, Munich 1998, no. 119; cf. Daum, *Maîtres verriers*, Lausanne 1980, p. 78f.

**€ 25.000 - 35.000**









95

95

**Daum Frères, Nancy**  
**'Paysage mauve' vase, c. 1907**

H. 23.3 cm. Cased glass, colorless and milk white, slightly pink. Etched, heightened with black solder and polychrome enameled decoration with a tree landscape at dawn. Signed: DAUM, Cross of Lorraine, NANCY (violet). Cf. Bardin, *Daum une industrie d'art lorraine*, Metz 2004, p. 177.

€ 2.800 - 3.600

96

**Daum Frères, Nancy**  
**Small 'Pois de Senteur' vase, 1910**

H. 12 cm. Cased glass, colorless, milk white, pink and amber powder inclusions. Etched and enameled decor in green and pink. Motif with blooming vetches. Signed: DAUM NANCY, Cross of Lorraine (etched).

Cf. exh. cat. *Daum Nancy*, Museum Bellerive, Zurich 1986, no. 157 (watercolor from the pattern collection of the Cristallerie Daum, Nancy (decor)); Cat. *Daum Frères Verreries de Nancy*, Zurich 1986, no. 97 (decor).

€ 1.200 - 1.400

97

**Henri Bergé**  
**Tall 'Campanules' vase, 1910**

H. 29.7 cm. Made by Daum Frères, Nancy. Cased glass, colorless, violet powder inclusions in the lower area, pink, orange and milky whitish powder inclusions. Etched and fine polychromely enameled decor, motif with blooming bluebells. Signed: DAUM NANCY, Cross of Lorraine, FRANCE (raised).

Cat. *Daum, la collection du Musée des Beaux-Arts de Nancy*, 2000, S. 126, watercolor by Henri Bergé.

€ 4.500 - 5.500



97



96

98

**Daum Frères, Nancy**  
**Tall 'Vigne' vase, c. 1910**

H. 61 cm. Cased glass, colorless and violet, burgundy, green and blue powder inclusions. Etched decor, motif with nocturnal vine tendrils. Signed: DAUM NANCY, Cross of Lorraine (raised).  
**€ 4.000 - 6.000**



98



99

**Georges de Feure  
Vase, 1910-14**

H. 14.2 cm. Made by Daum Frères, Nancy. Moulded purple glass. Textured pattern with antique motifs. Signed: G. de Feure (textured).

Inside with a few tiny chips.

Cappa, L'Europe de l'Art verrier, Liège 1991, p. 168, no. 290a.

Image online.

€ 150 - 200

100

**Georges de Feure  
Jug, c. 1910**

H. 17.3 cm. Made by Daum Frères, Nancy. Clear glass, fused powders, dark green and dark orange, matted. Signed: G. de Feure.

Hilschenz-Mlynek/Ricke, glass coll. Hentrich Düsseldorf, Munich 1985, no. 170.

Image online.

€ 180 - 200



103

101

**Daum Frères, Nancy  
Berluze, c. 1910**

H. 55.8 cm. Glass, clear, matt powder fusions, yellow and dark blue. Unsigned.

Image online.

€ 300 - 500

102

**Daum Frères, Nancy  
Berluze, c. 1910**

H. 50.7 cm. Glass, clear, matt powder fusions, pink and purple. Unsigned.

Image online.

€ 250 - 350



104

103

**Daum Frères, Nancy  
Table light, c. 1910**

H. 45 cm, Ø 24.5 cm. Cased glass, colorless, powder inclusions in brown, yellow and green tones, matt finish. Lampshade signed: DAUM, cross of Lorraine, NANCY (engraved). Wrought iron mounting.

€ 1.600 - 2.200

104

**Daum Frères, Nancy  
'Tilleul' vase, c. 1910**

H. 50.5 cm. Overlaid glass, colorless, orange and dark purple with lemon yellow inclusions, matt finish. Decor with linden twigs etched in several steps. Signed: DAUM NANCY, cross of Lorraine (raised).

€ 1.600 - 1.800



105

**105**

**Daum Frères, Nancy**  
**'Arnica' vase, c. 1910**

H. 10 cm. Overlaid glass, colorless, orange and green powder inclusions, amber and green enamel fusions (Vitrifications). Etched and polychrome enameled decor, motif with blooming arnica. Signed: DAUM NANCY, cross of Lorraine (black solder). Cf. Cat. Collection Daum, Christie's, Paris, 2004, No. 165-170.  
**€ 1.200 - 1.400**



106

**106**

**Daum Frères, Nancy**  
**'Je meurs où je m'attache' vase, c. 1910**

H. 11.6 cm. Overlaid glass, colorless, greenish and brown powder inclusions, blue, yellow, amber and green enamel fusions (Vitrifications). Etched decor, motif with ivy tendrils. Signed: DAUM NANCY, cross of Lorraine (raised).  
**€ 1.000 - 1.200**



107

**107**

**Daum Frères, Nancy**  
**'Mûres en automne' vase, c. 1910**

H. 11.8 cm. Overlaid glass, colorless, wine-red and green powder inclusions, mainly violet, auburn and green enamel fusions (Vitrifications). Etched decor, motif with autumnal blackberry branches. Signed: DAUM NANCY, cross of Lorraine (raised).  
**€ 1.000 - 1.200**

**108**

**Daum Frères, Nancy**  
**Table light, c. 1910**

H. 35 cm, Ø 15.5 cm. Colorless glass shade with orange and violet powder inclusions, frosted. Signed: DAUM, Cross of Lorraine, NANCY FRANCE (needle engraving). Blackened wrought iron base.  
**€ 1.400 - 1.600**



108



109

109

**Daum Frères, Nancy**  
**Vase 'Campanules', c. 1910**

H. 35.9 cm. Cased glass, colorless, deep blue powder inclusions in the lower area, pink, opalescent and milk white powder inclusions, isolated green and blue spots. Etched and polychrome enameled decor, motif with blooming bluebells and meadow herbs. Signed: Daum Nancy, Cross of Lorraine (raised).

Has been in the consignor's family for over 80 years.

Cat. Daum, la collection du Musée des Beaux Arts de Nancy, 2000, p. 126, watercolor by Henri Bergé.

€ 2.500 - 3.500



110





110

**Daum Frères, Nancy**

**'Coeur de Jeanette' vase, c. 1910**

H. 55.6 cm. Cased glass, colorless, pink and vanilla yellow powder inclusions, green and brown enamel fusions (Vitrifications). Etched and enameled decoration, motif with panicles of the Bleeding Heart. Signed: DAUM NANCY, Cross of Lorraine (raised). On the bottom: R (engraved).

Cf. Hilschenz-Mlynek/Ricke, Glass Collection Hentrich, Kunstmuseum Düsseldorf, Munich 1985, p. 103, no. 92.

€ 4.500 - 5.500

111

**Daum Frères, Nancy**

**'Paysage en été' flowerpot, c. 1910**

H. 9 cm, 28.3 x 17.6 cm. Cased glass, colorless, milky light blue and dark blue powder inclusions, green enamel fusions. Etched and enameled decor. Circumferential motif of a summer meadow landscape with a backdrop of trees. Bottom signed: DAUM NANCY (black solder).

€ 2.600 - 3.200

112

**Daum Frères, Nancy**

**'Tulips' vase, c. 1910**

H. 19.5 cm. Cased glass, colorless, pink and violet. Etched decoration with tulips, completely reworked with the wheel. Bottom signed: Daum, Cross of Lorraine, Nancy (engraved).

€ 2.200 - 2.600





113

**113**

**Daum Frères, Nancy**

**'Voiliers, soleil couchant' vase, 1910**

H. 7.5 cm. Cased glass, colorless, with yellow and amber powder inclusions. Background etched like ice glass, etched decor with black solder painting. Motif of a coastal landscape with sailing boats in the light of the setting sun. Signed: DAUM, Cross of Lorraine, NANCY (black solder).

€ 1.400 - 1.600

**114**

**Daum Frères, Nancy**

**Tall 'Voiliers, soleil couchant' vase, c. 1910**

H. 48.2 cm. Cased glass, colorless and deep violet, yellow and pink powder inclusions. Decor etched in several steps. Motif of a coastal landscape with sailing boats in the light of the setting sun. Signed: DAUM NANCY, Cross of Lorraine (raised).

€ 2.400 - 2.800



114



115

**Daum Frères, Nancy**

**'Mûres en automne' table lamp, c. 1910**

Slim mushroom shape. H. 31.8 cm, Ø 10.5 cm. Cased glass, clear, wine-red and green powder inclusions, predominantly violet, reddish-brown and green enamel fusions (vitrifications). Etched decor, motif with autumnal blackberry branches. Shade signed: DAUM NANCY, Cross of Lorraine (etched); Foot: ligated signet DN, Cross of Lorraine, F (highly etched).

Cf. Cat. Daum Collection of the Museum of Fine Arts of Nancy, Paris 2000, no. 322 (decor).

**€ 7.000 - 8.000**





**116**

**Daum Frères, Nancy**

**'Paysage lacustre' vase, c. 1910**

H. 25.4 cm. Cased glass, colorless, with yellow, orange-red and brown powder inclusions. Decor etched in several steps, motif of a coastal landscape in the strongly changing light of the setting sun. Signed: Daum, Cross of Lorraine, Nancy (engraved).

**€ 1.600 - 2.200**

**117**

**Daum Frères, Nancy**

**'Paysage lacustre' vase, c. 1910**

H. 11.4 cm. Cased glass, colorless, powder inclusions, raspberry red, yellow and orange. Etched decor with a tree-lined meadow landscape. Signed: Daum Nancy, Cross of Lorraine (raised).

**€ 900 - 1.200**

**118**

**Daum Frères, Nancy**

**Table light 'Paysage lacustre', c. 1910**

H. 37.5 cm, Ø 18.5 cm. Cased glass, colorless, with powder inclusions in raspberry red, yellow and orange. Etched decor with a tree-lined meadow landscape. Shade signed: DAUM NANCY, Cross of Lorraine (engraved). Foot: signet DN with Cross of Lorraine (etched). Iron mounting.

**€ 3.800 - 4.500**



120



119

**119**

**Daum Frères, Nancy**  
**'Eglantines' vase with foot, c. 1910**

H. 14.2 cm. Cased glass, colorless with yellow, amber and violet powder inclusions, greenish and orange-red enamel fusions. Etched decor with dog rose branches and rose hips. Signed: DAUM NANCY, Cross of Lorraine (raised).

**€ 1.400 - 1.600**

**120**

**Daum Frères, Nancy; Louis Majorelle, Nancy**  
**'Violettes' ceiling light, c. 1910**

Wide, bell-shaped lampshade. H. 10.5 cm, Ø 31 cm (shade). Total: H. approx. 50 cm. Cased glass, colorless, milk white, blue powder inclusions in the lower area. Etched and enameled decoration with blooming violets. Signed: DAUM NANCY, Cross of Lorraine (raised). Bronze mounting by Louis Majorelle, Nancy.

Hilschensch-Mlynek/Ricke, Hentrich glass collection, Kunstmuseum Düsseldorf, Munich 1985, no. 71.

**€ 6.500 - 7.500**



121

**Daum Frères, Nancy**

**Table light with a bronze base, c. 1910**

H. 37.5 cm, Ø 10.5 cm. Cased glass, colorless, pink powder inclusions and orange-yellow powder fusions. Signed: DAUM, Cross of Lorraine, NANCY (engraved). Bronze base with pine cone decoration on a black-grey marble base.

€ 1.800 - 2.200

122

**Daum Frères, Nancy**

**'Ancolies' bowl, c. 1910**

H. 9.2 cm, Ø 20.5 cm. Cased glass, colorless, yellowish and violet powder inclusions. Etched and polychrome enameled decor, motif with flowering columbine. Signed: DAUM NANCY, Cross of Lorraine (raised).

Cf. Cat. Collection Daum, Paris 2004, no. 133.

€ 1.400 - 1.600

123

**Julien Causse**

**Figurative table lamp, around 1910**

H. 58.7 cm, Ø 8.2 cm (shade). Shade made by Daum Frères, Nancy. Cased glass, colorless, powder inclusions in yellow, orange and violet. Signed: DAUM, Cross of Lorraine, NANCY (engraved). Bronze foot in the form of an Art Nouveau lady. Signed: J Causse (embossed). White marble base.

€ 900 - 1.200



122



123





124

**124**

**Daum Frères, Nancy**

**'Eglantines' vase, c. 1913**

H. 13.4 cm. Cased glass, colorless with yellow, amber and violet powder inclusions, greenish and orange-red enamel fusions. Etched decor with dog rose branches and rose hips. Signed: DAUM NANCY, Cross of Lorraine (raised).

€ 900 - 1.200

**125**

**Daum Frères, Nancy**

**Table light, 1918-20**

H. 32 cm, Ø 17.7 cm. Cased glass, colorless, powder fusions, predominantly pink and green. Shade signed: DAUM NANCY, Cross of Lorraine (blank etched). Wrought iron mounting, blackened.

Cf. Pétry/Maury, Daum dans les musées de Nancy, Nancy nd, No. 99.

€ 3.000 - 3.500



125



126

**126**

**Daum Frères, Nancy  
Table light, c. 1920**

H. 59 cm, Ø 31 cm. Overlaid glass, colorless, with vanilla yellow powder inclusions, pink and green powder inclusions. Etched decor with stylized plants. Lampshade signed: DAUM, cross of Lorraine, NANCY (engraved). Wrought iron mounting.

€ 2.200 - 2.800



127

**127**

**Daum Frères, Nancy; Louis Majorelle, Nancy  
Centerpiece, c. 1920**

H. 10.3 cm, Ø 15.5 cm. Cased glass, colorless, pink, blue oxide inclusions, burst precious metal foil. Signed: Daum, Cross of Lorraine, Nancy, France, L. Majorelle (engraved). Wrought iron mounting, blackened.

€ 1.000 - 1.200

**128**

**Daum Frères, Nancy  
Table light, c. 1925**

H. 46 cm, Ø 8 cm. Overlaid glass, clear, white, yellow, orange and purple powder inclusions. Matted. Signed: DAUM, cross of Lorraine, NANCY (engraved and rubbed with gold). Bronze foot.

Image online.

€ 300 - 500



129

**129**

**Daum Frères, Nancy  
Table light, c. 1925**

H. 36.5 cm. Cased glass, powder inclusions in yellow and orange, frosted. Signed: DAUM, Cross of Lorraine, Nancy (en-  
graved). Foot in the shape of an ibis in gilded bronze. Signed:  
C. Ranc (bossed).

**€ 800 - 900**

**130**

**Daum Frères, Nancy  
'Jades' table light, c. 1925**

H. 55.5 cm, Ø 26 cm. Cased glass, colorless, orange and dark  
red powder inclusions and burst gold foil, blown into wrought  
iron mounting. Signed: DAUM, Cross of Lorraine, NANCY (en-  
graved). Wrought iron base with open floral decoration.

**€ 3.200 - 3.800**



130





131

**131**

**Daum Frères, Nancy  
Table light, c. 1930**

H. 26 cm, Ø 25.5 cm. Colorless glass, etched, frosted. Lampshade and base signed: DAUM, cross of Lorraine, NANCY FRANCE (engraved). Wrought iron mounting, silver-plated.

**€ 2.200 - 3.200**

**132**

**Daum Frères, Nancy  
Vase, c. 1930**

H. 25.2 cm, Ø 26.8 cm. Mold-blown light green glass, etched. Signed: DAUM, Cross of Lorraine, NANCY FRANCE (engraved).

**€ 2.500 - 2.800**



132



133

**133**

**Daum Frères, Nancy  
Large vase, c.1930**

H. 31.5 cm, Ø 32.7 cm. Smoke brown tinted glass, etched. Signed: DAUM, Cross of Lorraine, NANCY FRANCE (engraved).

€ 1.000 - 1.400

**134**

**Daum Frères, Nancy; Verrerie de Belle Etoile, Croismare  
'Jades' vase with bronze mounting, c. 1910**

H. 40.4 cm. Cased glass, colorless, powder inclusions in orange, violet and green. Floral bronze mounting at the lip. Signed: Lorrain (black solder).

€ 700 - 800



134



**135**

**Verrerie d'Art Degué, Paris  
Ceiling light, c. 1930**

H. 63.5 cm, 39 x 39 cm. Pressed glass, satined, decorated in relief with rose baskets. Bronze mounting, nickel-plated. Signed: Degué (in relief).

**€ 500 - 600**

135

**136**

**André Delatte, Nancy  
Vase, 1920s**

H. 18 cm. Cased glass, colorless and orange-red; Decorated in black and white enamel, Greek-style dancers. Signed: ADELATTE NANCY (black solder).

**€ 1.000 - 1.200**



136





139



137

**137**

**André Delatte, Nancy  
'Hydrangea' vase, c. 1925**

H. 31 cm. Cased glass, colorless, with light blue powder inclusions, overlaid with violet. Etched decor with blooming hydrangea branches. Signed on the wall: ADELATTE NANCY (raised).

€ 1.400 - 1.800

**138**

**Verrerie de Fougerolles  
'Paysage' vase, c. 1920**

H. 17.5 cm. Cased glass, milk white and clear, rough etched. Grisaille paint, heath landscape. Rim gilded. Signed: Fougerolles (Grisaille paint).

Image online.

€ 200 - 300

**139**

**France  
2 ceiling lights, c. 1930**

H. 38.5 cm. Molded glass, colorless, partially satined, relief decoration with fish. Not marked. Bronze mounting, gold-colored.

€ 2.000 - 2.400

140

**Emile Gallé, Nancy**  
**'Libellules' flacon, c. 1884-89**

H. 14.8 cm. Colorless glass, optically blown.  
Decor with six flying dragonflies, in fine engraving, enameled and heightened with gold; Cover also with dragonfly. Bottom signed: Emile Gallé à Nancy 28 (engraved).

Cf. Le Tacon, Emile Gallé, Paris 2011, p. 89.

€ 9.000 - 12.000



At the end of the century before last, many artists found their ideals in flora and fauna.

A special meaning, also under the influence of Japonism and Symbolism, came to butterflies, which were considered a symbol of beauty and transience of existence. In contrast to this stood the „deceptive and dangerous beauty“ of the carnivorous dragonfly.

The insect with its long, flexible body in iridescent colors and four long, transparent wings, inspired poems and compositions and served as decoration on various objects. The depiction ranged from delicate enamel colors on glass vases, in pâte-sur-pâte on porcelain to marquetry or even as carvings.

Looking at this work, you can literally hear the whirring of the swarm of dragonflies flying around on the flacon.

141

**Emile Gallé, Nancy**  
**'Chardons' cup, c. 1884**

H. 12.6 cm. Slightly brownish, optically blown glass. Polychrome enamel decoration with thistles and cross of Lorraine, gold. Signed: E. Gallé Nancy (engraved). Exh. cat. Emile Gallé et le Verre, la Collection du Musée de l'Ecole de Nancy, Paris 2004, No. 59.

Image online.

€ 300 - 400

142

**Emile Gallé, Nancy**  
**'Ophrys apifera' liquor glass, c. 1895/96**

H. 8.9 cm. Greenish, optically blown glass. Fused wavy ribbon. Etched and enameled decor with bee orchid. Signed: E. Gallé Nancy (needle engraving). Cf. Hilschenz-Mlynek/Ricke, Glass Collection Hentrich Düsseldorf, Munich 1985, no. 223.

Image online.

€ 300 - 400

143

**Emile Gallé, Nancy**  
**'Paysage aquatique' bonbonniere, c. 1895**

H. 6 cm, Ø 14.5 cm. Cased glass, clear, opal green and amber marbled, blueish and greenish oxide inclusions, body and lid wholly with cut underwater decoration with shells and algae. Circumferentially Martelé-cut background. Signed on the base: Gallé (engraved).

€ 10.000 - 15.000



143







144

**Emile Gallé, Nancy**  
**'Tournesol' spray bottle, 1898**

H. 12.5 cm. Cased glass, colorless and orange-amber. Decor etched in several steps, two flowers with applied cabochons in green and dark red, backed with burst metal foil between the layers. Motif with sunflower. Inner wall matt etched. Signed on the bottom: EGallé (ornamental lettering in a stylized flower, needle etching). Metal mounting.

Cf. Hilschenz-Mlynek/Ricke, Hentrich glass collection, Kunstmuseum Düsseldorf, 1984, no. 238.

€ 1.000 - 1.200

144

145

**Emile Gallé, Nancy**  
**'Tulipes' vase, c. 1898-1900**

H. 24.8 cm. Cased glass, colorless, amber and dark red. Fully wheel-carved decoration with tulips in different stages, in the evening light. Signed: GALLÉ (Japanese, engraved).

€ 6.500 - 7.500



145



**146**

**Emile Gallé, Nancy**

**'Femmes aux Colchiques' vase, c. 1900**

Cone-shaped body on a cone-shaped basis with a flaring top rim. H. 30 cm. Cased glass, clear, pink and violet; fine inclusions of air bubbles (patinage), 2 large etched autumn crocus blossoms with bubbles and metal oxides in the intermediate layer (Intercalaire). Etched motif with 6 women in a tree-lined meadow picking autumn crocuses, probably based on a design by Victor Prouvé. Signed on the base: Gallé (engraved).

**€ 22.000 - 26.000**



**147**

**Emile Gallé, Nancy**

Tall 'Ombelles' vase, 1902-04

H. 72 cm. Cased glass, milky light pink, light green and amber. Etched decor. Motif with umbel flowers. Signed: Gallé (raised).

**€ 1.000 - 1.400**





148

**Emile Gallé, Nancy**

**Tall 'Catalpa bignonioides' vase,  
c. 1902-04**

H. 42.7 cm. Cased glass, colorless and whitish,  
with inclusions of vanilla yellow, orange and dark  
blue as well as violet. Decor etched in several steps,  
motif with branches of the

Catalpa tree. Signed: Gallé (raised).

€ 4.000 - 5.000



149

149

**Emile Gallé, Nancy  
'Anemones' vase with handles, 1903**

H. 24.5 cm. Cased glass, colorless, slightly light blue and orange-red. Decor etched in several steps, motif with blooming anemones, matted. Handles colorless and green. Signed on the wall: Gallé (Japanese lettering, raised).

Duncan, The Paris Salons, Vol. IV, Woodbridge 1998, p. 228 (historical photograph, center).

€ 2.200 - 2.800

150

**Etablissements Gallé, Nancy  
'Glycines' vase, 1905-06**

H. 22 cm. Cased glass, amber opalescent, clear and purple. Multiply etched wisteria pattern. Signed: Gallé, star (textured).

€ 700 - 800



150

**151**

**Etablissements Gallé, Nancy  
Tall 'Glycines' vase, 1905-08**

H. 46.2 cm. Cased glass, colorless opalescent, opaque pink and violet. Etched motif with wisteria tendrils. Signed: Gallé with asterisk (raised).

€ 2.200 - 2.800

**152**

**Etablissements Gallé, Nancy  
Vase 'Glycines', 1908-20**

H. 15.3 cm. Overlaid glass, amber opalescent, colorless and violet. Etched motif with wisteria tendrils. Signed: Gallé (raised).

€ 500 - 600

**153**

**Etablissements Gallé, Nancy  
Small 'Geranium' vase, 1908-20**

H. 9 cm. Overlaid glass, colorless and purple. Etched decor with geraniums; matted background. Signed: Gallé (raised).

Image online.

€ 250 - 450







154

**154**

**Etablissements Gallé, Nancy  
'Magnolia' vase, 1908-20**

Strongly flattened body with a flared, pointed-oval mouth.  
H. 32 cm. Cased glass, opalescent yellow, colorless and red.  
Decor etched in several steps, motif with blooming magnolias in  
an evening mood. Signed: Gallé (raised).

€ 5.500 - 6.500

**155**

**Etablissements Gallé, Nancy  
Small 'Chrysanthèmes' vase with handles, 1908-  
20**

H. 10.5 cm. Cased glass, colorless, orange and seal red. Etched  
motif with chrysanthemums. Handles colorless with yellowish  
powders. Signed: Gallé (raised).

€ 600 - 700



155



156

**156**

**Etablissements Gallé, Nancy**  
**'Pensées' vase, 1908-20**

H. 22.2 cm. Cased glass, opalescent amber, clear and violet. Etched decor, motif with pansies. Signed: Gallé (raised).

€ 700 - 800



157

**157**

**Etablissements Gallé, Nancy**  
**'Paysage lacustre' vase, 1908-20**

H. 22.5 cm. Cased glass, pink, clear, green and brown. Etched decor, motif of a meadow landscape in the light of the evening sun. Signed: Gallé (raised).

€ 1.500 - 1.800

**158**

**Etablissements Gallé, Nancy**  
**Vase 'Fuchsias', 1908-20**

H. 39.2 cm. Cased glass, colorless, yellow and violet. Etched motif with fuchsia branches. Signed: Gallé (raised).

€ 1.000 - 1.200



158



159

**Etablissements Gallé, Nancy**  
**Vase 'Geranium', 1908-20**

H. 35.7 cm. Cased glass, opalescent yellow, colorless and red-dish brown. Etched decor, motif with blooming geraniums in an evening mood. Signed: Gallé (raised).

€ 1.500 - 1.800

160

**Etablissements Gallé, Nancy**  
**Vase 'Glycines', 1908-20**

H. 18.5 cm. Cased glass, colorless, pink and violet. Etched motif with wisteria tendrils. Signed: Gallé (raised).

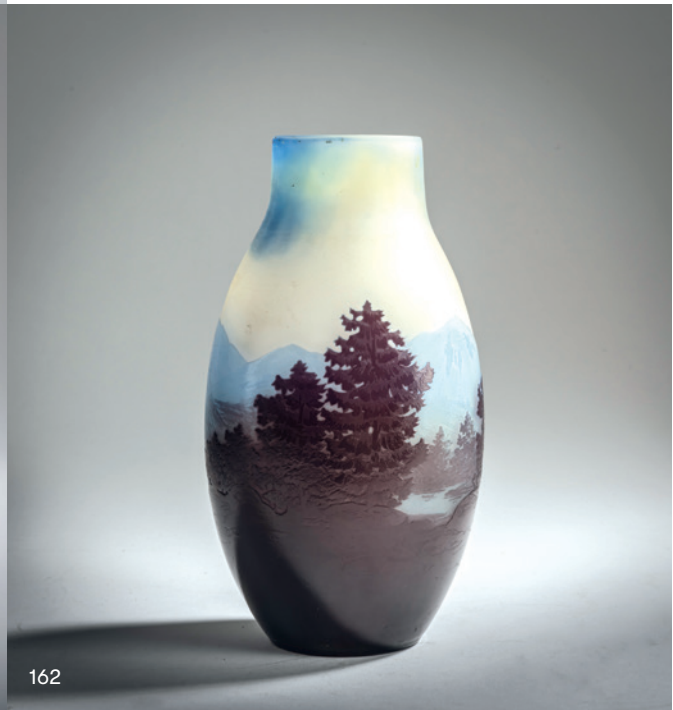
€ 800 - 900

161

**Etablissements Gallé, Nancy**  
**'Groseilles' bowl, 1908-20**

H. 9 cm, Ø 24.8 cm. Cased glass, colorless and raspberry red. Etched decor with currants. Signed: Gallé (raised).

€ 1.000 - 1.200







163

**162**

**Etablissements Gallé, Nancy**

**Small 'Paysage des Vosges' vase, 1920-24**

H. 19.1 cm. Overlaid glass, colorless, opal white, blue and purple. Etched decor: Vosges landscape with lake. Signed: Gallé (raised).

**€ 900 - 1.200**

**163**

**Etablissements Gallé, Nancy**

**Tall 'Le Lac de Côme le soir' vase, 1920-36**

H. 35.5 cm. Cased glass, dark amber, blue, clear, purple and brown. Pattern etched in several steps. Balustrade at the shore, peacock, island with ruin in the background, at sunset. Signed: Gallé.

Duncan/de Bartha, *Glass by Gallé*, London 1984, p. 200, no. 304.

**€ 14.000 - 16.000**



164

**Etablissements Gallé, Nancy  
'Chrysanthèmes' vase, 1920-36**

H. 15.2 cm. Overlaid glass, blue, colorless and opalescent yellow. Etched decor with blooming chrysanthemums, the flowers highlighted through etching on the inside. Signed: Gallé (raised).

€ 700 - 800



165

165

**Etablissements Gallé, Nancy  
Small 'Fleurs de Cerisier' vase, 1920-36**

H. 15.6 cm. Cased glass, light amber, colorless and red-brown. Etched decor, motif with blossoming cherry branches in an evening mood. Signed: Gallé (raised).

€ 900 - 1.200



166

166

**Etablissements Gallé, Nancy  
'Sagittaires et Nénuphars' vase, 1920-36**

H. 29.8 cm. Cameo glass, amber, colorless, blue and deep violet. Decor etched in several steps, motif of a pond landscape with arrowhead and water lilies. Signed: Gallé (etched).

Cf. exh. cat. Émile Gallé et le Verre, la Collection du Musée de l'Ecole de Nancy, Paris 2004, No. 343 (Decor).

€ 1.200 - 1.400

167

**Etablissements Gallé, Nancy  
'Fuchsias' vase, 1920-36**

Trumpet shape over target stand. H. 17.6 cm. Cased glass, colorless, yellow and red. Motif with fuchsias etched in several stages. Signed: Gallé (raised).

€ 1.000 - 1.200

168

**Etablissements Gallé, Nancy  
'Géranium' Vase, 1920-36**

H. 16.1 cm. Cased glass, colorless, opal yellow and dark red. Etched decor with cranesbill. Signed: Galle (raised).

€ 800 - 900



**169**

**Etablissements Gallé, Nancy  
'Tulipes' Vase, 1920-36**

H. 34.2 cm. Cased glass, opaque orange, colorless and dark brown. Etched decor with blooming tulips. Signed: Gallé (raised).

**€ 1.000 - 1.200**



**170**

**Etablissements Gallé, Nancy  
'Sagittaires et Nénuphars' vase, 1920-36**

H. 23.8 cm. Cased glass, yellow, colorless, blue and deep moss green. Decor etched in several steps, motif of a pond landscape with iris, arrowhead and water lilies. Signed: Gallé (raised).

**€ 1.400 - 1.600**







171

**Etablissements Gallé, Nancy  
'Ombelles' table light, 1920-36**

Wide mushroom shape. H. 66 cm, Ø 37 cm. Cased glass, salmon pink, clear, green and brown. Decor etched in several steps, motif with umbels. Signed: Gallé (raised).

**€ 9.000 - 12.000**

**172**

**Etablissements Gallé, Nancy  
'Algues' Vase, 1920-36**

Slim oval shape. H. 25 cm. Cased glass, colorless, green and seal red. Etched decor with seaweed. Matted inside. Signed: Gallé (raised).

€ 2.600 - 3.200

**173**

**Etablissements Gallé, Nancy  
'Bignones' vase, 1920-36**

H. 13.9 cm. Cased glass, colorless, opal yellow and dark red. Etched decor motif with branches of the American trumpet flower 'Campsis radicans'. Signed: Galle (raised).

€ 900 - 1.200

**174**

**Etablissements Gallé, Nancy  
'Clématites' table light, 1925-36**

H. 19 cm. Cameo glass, colorless, opal yellow and dark violet. Etched decor with clematis tendrils. Signed: Gallé (etched). Bronze mounting.

Duncan / de Bartha, Glass by Gallé, London 1984, No. 296, color variant.

€ 2.000 - 2.500

172



173



174



**175**

**Etablissements Gallé, Nancy**

**Soufflé lamp base 'Rhododendron', 1925-36**

Spherical. H. 25.5 cm. Cased glass, opalescent, colorless, yellow and violet, in so-called. Blown using the soufflé technique. Decor etched in several steps, motif with blooming rhododendron branches. Signed on the wall: Gallé (etched). Muzzle with brass mounting.

**€ 5.500 - 6.500**



176

**Etablissements Gallé, Nancy**  
**Soufflé-Vase 'Bignones', 1925-36**

Spherical shape with stepped shoulder and sloping lip rim. H. 25 cm.  
Cased glass, opalescent, colorless, yellow and red, blown using the so-called soufflé technique. Decor etched in several steps, motif with branches of the American trumpet flower 'Campsis radicans'. Signed on the wall: Gallé (etched).

€ 12.000 - 14.000





177

**177**

**Etablissements Gallé, Nancy**  
**Tall 'Eglantines' vase, 1925-36**

H. 31.2 cm. Cased glass, colorless, opal yellow and dark red. Etched decor with wild roses. Signed: Gallé (raised).

**€ 900 - 1.200**



178

**178**

**Etablissements Gallé, Nancy**  
**'Clematites' vase, 1925-36**

H. 32.4 cm. Cased glass, light amber opalescent, colorless, violet and blue. Decor etched in several steps, motif with tendrils of clematis in an evening mood. Signed: Gallé (raised).

**€ 2.000 - 2.400**

**179**

**Etablissements Gallé, Nancy  
Vase 'Iris', 1925-36**

H. 15 cm. Cased glass, colorless, red and violet. Etched decoration with blooming iris. Signed: Gallé (raised).

Image online.

€ 400 - 600

**180**

**Etablissements Gallé, Nancy  
'Chrysanthèmes' Vase, 1925-36**

H. 32.5 cm. Cased glass, colorless opalescent yellow and blue. Etched decor with blooming chrysanthemums. Signed: Gallé (raised).

€ 2.600 - 3.200

**181**

**Etablissements Gallé, Nancy  
'Cyclamens' bowl, 1928-36**

H. 6.5 cm, Ø 16 cm. Cased glass, colorless, lemon yellow and wine red. Etched decor with blooming cyclamen in an evening mood. Signed: Gallé (Japanese lettering, raised).

€ 1.000 - 1.200





182

**Legras & Cie., Saint-Denis  
'Lamartine'-Vase 'Paysage', c. 1910**

H. 21.2 cm. Cased glass, colorless, opal white powder inclusions. Polychromely enameled landscape with birch trees, background etched like ice glass. Signed: Lamartine (needle etching); on the bottom: 327/601 (needle etching).

€ 900 - 1.200



182

183

**Legras & Cie., Saint-Denis  
'Apple Blossom' Vase, 1915-20**

H. 30.7 cm. Cased glass, colorless, milk white, pale green and white, blue powder inclusions in the lower area. Etched and enameled in several steps. Apple blossoms. Rim in relief with gold heightening. Signed: Legras (raised).

Michel / Vitrat, François-Théodore Legras, Montreuil 2012, Nr. 1104.

€ 1.400 - 1.600



183



184



185

**184**

**Legras & Cie., Saint-Denis  
Vase, c. 1928**

H. 17.2 cm. Cased glass, colorless, yellow and orange powder inclusions. Matted outside. Etched and enameled decoration with stylized flowers. Signed: Legras (raised).

€ 700 - 800

**185**

**Jean-Michel, Paris  
'Paysage lacustre' vase, 1915-20**

H. 21.2 cm. Cased glass, amber, red and green. Motif etched in several steps with numerous sailing boats in the light of the setting sun. Signed: J.Michel PARIS (raised).

€ 600 - 700

**186**

**Muller Frères, Nancy  
'Paysage' Vase, 1920-35**

Depicting a hunting party. H. 19.8 cm. Cased glass, colorless, orange and violet powder inclusions. Etched decor of a hunting party in the forest, heightened with black solder.

Signed: MULLER FRÈRES LUNEVILLE (black solder).

**187**

**Muller Frères, Lunéville  
'Paysage' vase, c. 1920**

Cube-shaped with a quatrefoil mouth. H. 22.5 cm. Cased glass, colorless and opalescent yellow, etched and enamel-painted pond landscape with trees all around. Signed on the wall: MULLER FRÈRES LUNEVILLE (black solder).

€ 4.000 - 4.500



186



187



188

**188**

**Muller Freres, Lunéville  
'Framboises' vase, c. 1920**

Cylindrical shape with a tapered neck. H. 22.5 cm. Cased glass, colorless, orange and violet powder inclusions, fused enamel, dark red and green. Etched decor with raspberry bushes. Signed: MULLER FRES LUNEVILLE (etched).

€ 1.600 - 2.200

**189**

**Muller Frères, Lunéville  
Vase, c. 1925**

H. 26.1 cm. Cased glass, colorless, powder inclusions in orange and purple, matt. Signed: MULLER FRES. LUNEVILLE (etched). Image online.

€ 500 - 600



190



192



**190**

**Henri Muller, Croismare  
'Tulipes' vase, c. 1900**

H. 19.7 cm. Overlaid glass, colorless, opalescent and dark red. Etched decor with tulips. Bottom signed: HMuller Croismare près Nancy (round acid stamp with moth).

Hilschenz-Mlynek/Ricke, Glass Collection Henrich Düsseldorf, Munich 1985, p. 333, no. 453 (shape).

€ 1.400 - 1.600

**191**

**Henri Muller, Croismare  
'Chrysanthèmes' vase, c. 1900**

Double flattened baluster. H. 41 cm. Cased glass, colorless, orange and red. Etched decor with chrysanthemums. Signed: MULLER Croismare (raised).

€ 5.000 - 6.000

**192**

**Henri Muller, Croismare  
Small narrow-necked vase, 1905-08**

Discus-shaped with a long, cylindrical neck on a constricted stand. H. 12.5 cm. Cased glass, colorless, caramel brown and red. Etched decor with leaves. Signed: MULLER (deepened).

€ 1.600 - 2.200



191



193

**Paul Nicolas, Nancy**

**'Coquelicots' table light, 1919-25**

H. 32 cm, Ø 15 cm. Cased glass, colorless, amber, red and violet. Etched decor with corn poppies.

Signed: D'Argental (etched). Bronze mounting.

€ 4.000 - 5.000

**194**

**Paul Nicolas, Nancy  
'Clematis' vase, 1919-25**

H. 10 cm. Cased glass, colorless, amber brown and dark blue. Etched decor with clematis. Signed: D'Argental (raised).

Image online.

€ 600 - 700

**195**

**Marius-Ernest Sabino, Paris  
'Naiades' box and cover, c. 1925**

H. 4.8 cm, Ø 16 cm. Pressed glass, colorless and opalescent, motif in relief in the lid with three naiads holding hands. Marked on the lid and on the bottom: SABINO PARIS (raised).

Image online.

€ 600 - 700

**196**

**Marius Ernest Sabino, Paris  
Tall 'Oiseaux' table light, c. 1928**

H. 52 cm. Colorless molded glass, frosted, decorated in relief with birds between flowering branches, Martelé-cut background. Bronze mounting.

Electrified.

€ 900 - 1.200



196





197

**197**

**Schneider, Epinay-sur-Seine  
Tall vase, 1918-22**

H. 47 cm. Cased glass, colorless, vanilla yellow powder inclusions. Enamel fusion, orange and brown. Etched stylized decor. Signed: Schneider with amphora (needle etching). Cf. Mannoni, Schneider, Paris nd, p. 57; cf. Cat. Barlach Heuer, Epinay-sur-Seine 2012, p. 150.

**€ 1.400 - 1.600**



199

**198**

**Schneider, Epinay-sur-Seine  
'Jades' vase, 1918-24**

H. 18.7 cm. Overlaid glass, clear, powder inclusions, vanilla yellow, orange, white and blue. Signed: Schneider (engraved). Image online.

**€ 300 - 500**

**199**

**Schneider, Epinay-sur-Seine  
Vase with handles, 1918-24**

H. 34.6 cm. Cased glass, colorless, whitish, orange and seal-red powder inclusions, marbled. Handles and foot dark purple. Signed: Schneider (needle etching).

**€ 1.000 - 1.200**



200

**200**

**Schneider, Epinay-sur-Seine  
'Monnaie du Pape' table light, 1919-21**

H. 44.7 cm. Lampshade made of cased glass, colorless, with light orange powder inclusions, powder melting in olive green, orange and brown. Etched decoration with honesties over a rough background. Not signed. Base made of nickel-plated bronze.

Joulin / Maier, Charles Schneider, Augsburg 2004, p. 96.

**€ 850 - 950**

**201**

**Schneider, Epinay-sur-Seine  
'Bijou' Vase, 1919-22**

H. 23.3 cm. Cased glass, colorless, with yellow and dark violet powder inclusions. Applied band of dark violet glass, reworked with the wheel, enamels in yellow and orange. Matted surface. Signed: Schneider (enameled).

**€ 3.800 - 4.500**



201



203

**202**

**Schneider, Epinay-sur-Seine  
'Bijou' Vase, 1920-22**

H. 28.9 cm. Cased glass, colorless, with orange powder inclusions, three applied violet nubs. Signed: Schneider with amphora (engraved).

Image online.

€ 400 - 600

**203**

**Schneider, Epinay-sur-Seine  
'Intercalaires' vase, 1920-24**

H. 19 cm. Cased glass, colorless, with orange powder inclusions. Fused floral decoration in intercalaire technique in light green, red and dark violet glass masses. Matted surface. Signed: Schneider (needle etching with gilding).

Cf. Joulin / Maier, Charles Schneider, Augsburg 2004, pp. 268ff.

€ 14.000 - 18.000



204

**Schneider, Epinay-sur-Seine  
'Intercalaires' Vase, 1920-24**

H. 17 cm. Cased glass, clear, with yellow powder inclusions. Fused floral decoration using the intercalaire technique in green, orange and dark purple glass masses. Matted surface. Signed: Schneider with amphora (needle etching and engraved).

Cf. Joulin / Maier, Charles Schneider, Augsburg 2004, pp. 268ff.

€ 6.000 - 8.000





205

**Schneider, Epinay-sur-Seine**

**'Groseilles' bowl with wrought iron mounting, 1920-24**

H. 19 cm. Cased glass, colorless, with yellow, red and orange powder inclusions. Fused decoration with currants made of red and dark violet glass, reworked with the wheel. Signed: Schneider (needle etching). Wrought iron base with glass spheres with multicolored powder inclusions.

Cf. Joulin/Maier, Charles Schneider, Augsburg 2004, p. 282 (decor).

**€ 4.000 - 5.000**

**206**

**Schneider, Epinay-sur-Seine  
Large 'Bijou' bowl, 1920-26**

H. 12.5 cm, Ø 34 cm. Cased glass, colorless, with red and violet powder inclusions. 4 applied handles made of dark violet glass. Signed: Schneider (needle etching).

Cf. Joulin/Maier, Charles Schneider, Augsburg 2004, p. 258 (decor).

€ 1.000 - 1.200

**207**

**Schneider, Epinay-sur-Seine  
'Jades' vase, 1922-24**

H. 22.8 cm. Cased glass, colorless, with white, yellow, orange and violet powder inclusions. Signed: Schneider (engraved).

Cf. Joulin/Maier, Charles Schneider, Augsburg 2004, p. 263 (decor).

€ 600 - 700

**208**

**Schneider, Epinay-sur-Seine  
'Jades' bowl, 1922-24**

H. 15.2 cm. Cased glass, colorless, with white, yellow, orange and violet powder inclusions. Signed: Schneider (sandblasted).

Cf. Joulin/Maier, Charles Schneider, Augsburg 2004, p. 263 (decor).

€ 700 - 800







209

**209**

**Schneider, Epinay-sur-Seine  
'Marbré' table light, 1922-24**

H. 36 cm. Cased glass, colorless with yellow, orange and dark violet powder inclusions. Signed: Schneider with amphora (engraved and gilded). Wrought iron mounting. Cf. Joulin/Maier, Charles Schneider, Augsburg 2004, p. 301 (decor).

**€ 1.000 - 1.200**



210

**210**

**Schneider, Epinay-sur-Seine  
Tall 'Campanules' vase, 1922-25**

H. 44 cm. Cased glass, colorless, with red and yellow powder inclusions. Dark red-brown enamel fusions. Decor etched in several steps, motif with bluebells in an evening mood. Signed: Le Verre Français (diamond cut).

Cf. Joulin / Maier, Charles Schneider, Augsburg 2004, p. 107.

**€ 2.200 - 2.800**



211

**211**

**Schneider, Epinay-sur-Seine  
'Coupe Bijou', 1922-26**

H. 17 cm. Cased glass, colorless, with white and pink powder inclusions. Foot and shaft with dark violet powder inclusions. Matted surface. Signed: Schneider (needle etching).

Cf. Joulin / Maier, Charles Schneider, Augsburg 2004, p. 250.

**€ 1.000 - 1.200**

**212**

**Schneider, Epinay-sur-Seine  
6 champagne bowls 'Bijoux', 1922-26**

H. 13.5 cm. Cased glass, colorless, with orange-red powder inclusions with pricked air bubbles. Colorless glass stem, base with dark violet powder inclusions. Signed: Schneider (needle etching).

Image online.

**€ 700 - 800**

**213**

**Schneider, Epinay-sur-Seine  
Vase, 1923-25**

H. 23.7 cm. Cased glass, colorless, with yellow and violet powder inclusions. Application of a stylized clematis flower made of opaque violet glass. Signed: Schneider (needle etching).

Cf. Mannoni, Schneider, Paris nd, pp. 104f.

**€ 6.000 - 8.000**



214

**Schneider, Epinay-sur-Seine**  
**Vase, 1923-25**

H. 22 cm. Cased glass, colorless, with yellow and violet powder inclusions. Application of a stylized clematis flower made of opaque violet glass. Signed: Schneider (needle etching). Cf. Joulin/Maier, Charles Schneider, Augsburg 2004, p. 287 (form); cf. Mannoni, Schneider, Paris nd, p. 105 (decor).

**€ 7.000 - 8.000**







215

**215**

**Schneider, Epinay-sur-Seine  
'Perlières' vase, 1924-27**

H. 45 cm. Overlaid glass, colorless with yellow and reddish powder inclusions, violet enamel melts. Decor with berry tendrils etched in several steps. Signed above the edge of the stand: Le Verre Français (needle etching).

Cf. Joulin / Maier, Charles Schneider, Munich 2020, p. 161 (decor).

€ 1.000 - 1.400

**216**

**Schneider, Epinay-sur-Seine  
'Cosmos' vase, 1928-30**

H. 13 cm. Cased glass, colorless, with blue-green and yellow powder inclusions. Enamel fusion in red. Etched stylized decoration. Dark purple glass base. Signed: Le Verre Français (engraved).

Cf. Joulin/Maier, Charles Schneider, Munich 2020, p. 238.

€ 900 - 1.200

**217**

**Schneider, Epinay-sur-Seine  
'Cosmos' vase, 1928-30**

H. 31.5 cm. Cased glass, colorless, with blue-green and yellow powder inclusions. Enamel fusion in red. Etched stylized decoration. Signed: Le Verre Français (engraved).

Cf. Joulin/Maier, Charles Schneider, Munich 2020, p. 238.

€ 1.600 - 2.200



217



216

218

**Schneider, Epinay-sur-Seine  
'Arcs' table light, 1929-30**

H. 33 cm, Ø 30 cm. Glass, colorless, violet enamel melts, matted. Etched decor with stylized arches. Foot deep purple. Foot signed: Le verre Français (needle engraving). Wrought iron mounting. Joulin / Maier, Charles Schneider, Augsburg 2004, p. 212.

€ 4.000 - 5.000



219

**Schneider, Epinay-sur-Seine  
Large vase, 1930-33**

H. 24.4 cm. Cased glass, colorless, with violet powder inclusions. Surface partially matted. Signed: Schneider (needle etching).

Cf. Joulin / Maier, Charles Schneider, Augsburg 2004, p. 334.

€ 700 - 800



219



220

220

**Verreries des Andelys  
Ceiling light, c. 1930**

H. 63 cm, Ø 39 cm. Pressed glass, opalescent, satined, decorated in relief with geese and fish. Mounting made of nickel-plated metal.

€ 800 - 900

**221**

**Henri Bergé**

**'Insect' pendant, c. 1925**

3.7 x 3 cm. Pâte de verre, translucent glass gather, molded, predominantly light blue. Insect with powder fusions, brown and almost black. Signed: HB, AW (recessed, indistinct).

**€ 600 - 700**



221



**222**

**Amalric Walter, Nancy**  
**Bowl, c. 1925**

H. 7.1 cm, Ø 30.4 cm. Pâte de verre, translucent glass gather, molded, predominantly light blue and dark blue. Signed: AWALTER NANCY (embossed).

**€ 3.500 - 4.500**



222

**223**

**Henri Berge**

**Small 'Capricorne du Chêne' dish, c. 1925**

11.8 x 8 cm. Pâte de verre, slightly translucent glass mass, molded, mainly amber. Relief depiction of an oak buck, black and brown overlays. Signed: AWALTER NANCY (indistinct, embossed).

**€ 400 - 600**



223





227

**224**

**Bohemia**

**Vase with galvanic silver plating, c. 1900**

H. 20 cm. Opaque turquoise, agate-like marbled glass mass, ornamental silver plating.

Image online.

€ 200 - 300

**225**

**Glass factory Elisabeth, Pallme-König & Habel, Košť'any u Teplice**

**Vase, 1900-03**

H. 26.4 cm. Deep violet glass, relieved, white-veined thread application, lustered.

Image online.

€ 250 - 450

**226**

**Glass factory Elisabeth, Pallme-König & Habel, Košť'any u Teplice**

**2 vases, 1900-05**

H. 8.6-12.8 cm. Colorless glass, melted crushed glass, silver yellow, applied dark violet thread, pearlescent matt luster.

Image online.

€ 100 - 200

**227**

**Glass factory Elisabeth, Pallme-König & Habel, Košť'any u Teplice**

**Table light, c. 1900-05**

H. 47 cm, Ø 33 cm. Cased glass, opal light green, fused pink crushed glass, applied deep violet thread in relief, pearlescent matt luster. Brass base.

€ 2.200 - 2.800



**228**

**Glass factory Elisabeth, Pallme-König & Habel,  
Košťany u Teplice  
2 Vases, 1900-05**

H. 29.5 cm. Colorless glass with violet thread coating and fused silver-yellow spots, pearlescent matt luster. Floral brass mounting.  
Cf. Höltl (ed.), Das Böhmisches Glas, vol. IV, Passau 1995, p. 169, no. IV 290.

€ 800 - 900

**229**

**Glass factory Elisabeth, Pallme-König & Habel,  
Košťany u Teplice  
2 sconces, 1900-1905**

H. 38 cm, 33 x 14 cm. Cased glass, opal light green, fused crushed pink glass, deep violet thread application in relief, pearlescent matt luster. Brass mounting.

One shade chipped near the mounting (not visible).

€ 900 - 1.200

**230**

**Wilhelm Kralik Son, Lenora  
Brass-mounted vase, c. 1905**

H. 39 cm. Cased glass, colorless and green, vertically structured, relieved surface, dense green crumb fusion. Burnished brass mounting with floral motifs.

Cf. Höltl (ed.), Das Böhmisches Glas, Vol. IV, Passau 1995, p. 159.

€ 1.400 - 1.600



229



230



232

**231**

**Loetz, Klášterský Mlýn  
'Karneol' jug, 1888-89**

H. 19.3 cm. Overlaid glass, colorless, opal white and pink, marbled. Neck gilded and enameled white.

Image online.

€ 250 - 450

**232**

**Loetz, Klášterský Mlýn  
'Papillon' goblet, 1898**

H. 24 cm. Colorless glass with silver-yellow crumbs, strong pearlescent luster. Floral relief gold decoration. Marked: Brussels sales label.

€ 600 - 700

**233**

**Loetz, Klášterský Mlýn  
2 'Papillon' vases, c. 1899**

H. 9.4-9.6 cm. Cobalt blue glass, papillon decor, pearlescent matt luster.

€ 900 - 1.200

**234**

**Loetz, Klášterský Mlýn  
'Phänomen' box and cover, c. 1899**

H. 9.9 cm. Overlaid glass, ruby red and colorless. Diagonally, combed decor made of silver-yellow threads, pearlescent, matt luster. Hinged lid made of silver-plated metal with a gilded interior and a floral decoration in relief by Victor Saglier, Paris. Marked: VS, sailing ship (embossed).

€ 850 - 950



233



234



**235**

**Loetz, Klášterský Mlýn**

**'Papillon' vase with galvanic silver plating, c. 1900**

H. 12 cm. Green glass, papillon decor, pearlescent matt luster. Galvanic silver plating with engraved Feston motifs.

€ 700 - 800

**236**

**Loetz, Klášterský Mlýn**

**'Phänomen' ceiling light, 1901**

Spindle-shaped spout. H. 19 cm. Two-piece brass mounting with three chain straps, L. 54 cm (total). Made for Bakalowits Sons, Vienna. Colorless glass, surrounding six leaf motifs in blue opal over orange and silvery yellow spots, moss green and silvery yellow threads in the lower area, Phänomen Gre 1/109, pearlescent matt luster.

Ricke/Ploil, Lötzböhmisches Glas, vol. 2, Munich 1989, p. 287, shape no. 85/3884; Mergl/Ploil/Ricke, Lötzböhmisches Glas, Ostfildern 2003, p. 304, B 119 (decor).

€ 2.800 - 3.300

**237**

**Otto Beran**

**'Papillon' cube vase, c. 1898/99**

H. 15 cm. Made by Loetz, Klášterský Mlýn. Cased glass, colorless and green, rolled-in crumbs in silvery yellow, cobalt papillon, pearlescent matt luster.

Ricke/Ploil, Loetz Böhmisches Glas, Vol. 1, Munich 1989, p. 328.

€ 900 - 1.200





238

**238**

**Loetz, Klášterský Mlýn  
'Medici' table light, c. 1902**

H. 60.5 cm. Colorless glass shade, 'Medici' decor with orange crumbs, pearlescent matt luster.

**€ 2.400 - 2.800**

**239**

**Loetz, Klášterský Mlýn  
Vase, c. 1902**

With four handles worked out of the wall.  
H. 19 cm. Colorless glass, with dense silvery-yellow fusions, Candia silberiris, with a strong pearlescent matt luster.

**€ 3.000 - 3.600**

**240**

**Loetz, Klášterský Mlýn  
'Phänomen' vase with electroplated silver plating, c. 1902**

H. 13.4 cm. Cased glass, metallic yellow and colorless, feather-like combed Phänomen decor made of silver-yellow threads, with a strong pearlescent matt luster. Finely engraved silver plating with floral motifs.

**€ 2.000 - 2.400**



239



240

**241**

**Loetz, Klášterský Mlýn  
'Phänomen' lamp shade, c. 1902**

H. 16.8 cm. Cased glass, colorless and opal white, feather-like painted blue and silver-yellow thread decoration, vertical, broken lines, pearlescent lustered Phänomen decoration.

**€ 700 - 800**

**242**

**Loetz, Klášterský Mlýn  
'Phänomen' vase, 1901**

H. 11.5 cm. II-906. Cased glass, colorless and opal white, combed orange and silver-yellow thread decor, pearlescent matt luster Phänomen Gr. II-906.

Restored crack with loss at the lip.

**€ 700 - 800**



241



242





243

**243**

**Loetz, Klášterský Mlýn  
Table light, 1903/04**

H. 36 cm. Shade: cased glass, Phänomen Gre 846, colorless, feather-like combed decoration of blue and silver-yellow threads, above broken lines, pearlescent matt luster Base: Pewter. Designed by Friedrich Adler (attr.). Execution: Walter Scherf, Nuremberg. Pewter. Marked: „OSIRIS 1039 ISIS“ (embossed).  
Pese, Friedrich Adler, Stuttgart 1994, p. 271, no. L6.

€ 2.500 - 3.000

**244**

**Loetz, Klášterský Mlýn  
2 'Papillon' vases with leaf overlays, 1904**

H. 19.5 cm. Colorless glass, lip and 3 leaf supports deep violet, silver-yellow spots fused, pearlescent matt lustered.  
Cf. Ricke/Ploil, Lötz Böhmisches Glas, vol. 2, Munich 1989, p. 152, shape no. 1492 (different shape with these sheet overlays).

€ 1.200 - 1.800

**245**

**Loetz, Klášterský Mlýn  
'Texas'-Vase, 1907**

H. 14 cm. Colorless glass, dense mesh decor running green and reed plant on the front as a plastic application, execution 8 (leaf green with Texas w. silver), strong gold and pearlescent matt luster.

Ricke/Ploil, Loetz Böhmisches Glas, vol. 1, Munich 1989, p. 224, no. 266.

Image online.

€ 600 - 800

**246**

**Michael Powolny (after)  
Vase, 1914**

H. 28.3 cm. Execution: Loetz, Klášterský Mlýn. Cased glass, colorless and orange-red, lip and vertical threads in deep violet.  
Cf. Ricke/Ploil, Lötz Böhmisches Glas, vol. 2, Munich 1989, p. 227, shape no. 510/7.

€ 1.000 - 1.200

**247**

**Michael Powolny (after)  
Vase, c. 1914**

H. 19.5 cm. Made by Loetz Wwe., Klášterský Mlýn. Overlaid glass, colorless and opal white. Fused violet threads, also at the lip.

€ 700 - 800

**248**

**Loetz, Klášterský Mlýn  
Vase, c. 1914**

H. 11.8 cm. Cobalt blue glass, fused crushed blue glass, rim and three handles, colorless with silver-yellow overlays, pearlescent matt luster.

€ 700 - 800



244



246



247

**249**

**Loetz, Klášterský Mlýn  
Footed vase, 1923-25**

H. 14.2 cm. Cased glass, clear and deep purple, white and orange powder inclusions, feet blue. Multiply etched hop pattern. Signed: Richard (raised).

Image online.

€ 250 - 350

**250**

**Loetz, Klášterský Mlýn  
Vase with Landscape, 1923-25**

H. 22 cm. Cased glass, colorless, orange and brown. Etched motif of a meadow landscape with a village and a mountain backdrop. Signed: Richard (raised).

Image online.

€ 350 - 450

**251**

**Loetz, Klášterský Mlýn  
Vase, c. 1924**

H. 10.5 cm. Cased glass, colorless and orange-red with four drops in yellow, iridescent.

€ 700 - 800

**252**

**Loetz, Klášterský Mlýn  
Papillon'-Vase, 1925**

H. 21.2 cm. Cased glass, colorless and salmon pink, in the lower area violet layer with blue 'Papillon' decoration.

Ricke/Ploil, Loetz Böhmisches Glas, vol. 1, Munich 1989, p. 304, no. 376.

Image online.

€ 600 - 800



248



251

**253**

**Josef Hoffmann  
Goblet 1921/22**

H. 8.8 cm, Ø 11.5 cm. Execution: Susanne Loetz, Klášterský Mlýn. Blue glass.

Neuwirth, Wiener Werkstätte, Vienna 1984, p. 213.

Image online.

€ 350 - 450

**254**

**Ludwig Moser, Karlo Vyvary  
Vase 'Karlsbader Secession', c. 1904**

H. 9 cm. Colorless glass, optically blown. Fused decor on the wall, motif with strawberries, engraved and partially gilded.

Cf. Mergl / Pánková, Moser 1857-1997, Passau 1997, p. 62.

€ 800 - 900

**255**

**Heinrich Hussmann  
Vase, 1929**

H. 20.5 cm. Alexandrite glass, cut and polished. Marked: Moser (acid stamp).

€ 800 - 900

**256**

**Koloman Moser (style)  
Pendant light, c. 1900**

H. 136.5 cm. Shade made of overlaid glass, milk white and clear, dots made of green glass. Brass mounting, burnished.

€ 1.400 - 1.600



254



256



255





**257**

**Vienna  
Vase, c. 1920**

H. 21.4 cm. Glass, colorless, stylized floral decor in impasto, polychrome enamel.

Image online.

€ 350 - 450

**258**

**Wiener Werkstätte  
Small footed bowl, 1915-20**

H. 8.7 cm. Colorless glass, optically blown cup, stylized floral decoration in polychrome enamel and black solder. Signed: WW.

€ 600 - 700

**259**

**Wiener Werkstätte  
Goblet, c. 1920**

H. 24 cm. Glass, colorless, cut, enameled and contoured with black solder. Dance of women with ribbon, flying birds and flowers. Marked: VWV (...) (black solder).

€ 900 - 1.000

**260**

**Josef Hoffmann  
Vase, 1917/18**

H. 11.3 cm. Execution: Meyr's nephew, Adolfo or J. Oertel, Haida for the Wiener Werkstätte. Colorless glass, cut twelve times. Marked: WW (etched).

Cf. Neuwirth, Glas 1905-1925, Vienna 1985, p. 191.

€ 800 - 900



**261**

**Arsall, Weisswasser  
Vase with Rose Hips, 1921-29**

H. 12,1 cm. Cased glass, colorless, pink, orange and green. Decor with rosehip branches etched in several work steps, matted.

Signed: Arsall (etched).

Image online.

€ 350 - 450





265



268

**262**

**Germany**

**4 liqueur glasses, c. 1906-10**

H. 13.5 cm. Colorless glass, gold-plated shaft.

Image online.

€ 400 - 600

**263**

**Germany**

**6 wine glasses, 1931**

H. 20.4-20.5 cm. Colorless glass („thin-walled lead crystal“).

Image online.

€ 200 - 300

**264**

**Germany**

**6 champagne glasses, 1931**

H. 21.2-21.3 cm. Colorless glass („thin-walled lead crystal“).

Four glasses with minimal nicks on the edge of the lip.

Image online.

€ 200 - 300

**265**

**Otto Thamm**

**Vase, 1902**

H. 16.5 cm. Cased glass, colorless and opal white, blue combed thread inclusions and burst silver foil; engraved and polychrome enameled friezes.

Cf. Zelasko, Fritz Heckert, Passau 2012, p. 212, no. 371.

€ 600 - 700

**266**

**Betty Hedrich (attr.)**

**'Violet' vase, 1900/01**

H. 13.5 cm. Execution: Ferdinand von Poschinger, Buchenau. Purple opalescent glass, purple and green enamel painting. Marked: 90/ II, H. 109 (engraved).

Cf. Höltl (ed.), Das Böhmisches Glas, Vol. V, Passau 1995, p. 21, V. 3.

Image online.

€ 300 - 400

**267**

**Rheinische Glashütten, Cologne-Ehrenfeld**

**9 wine glasses, c.1900**

H. 23.7 cm. Glass, colorless, tinted amber. Optically blown cup, hollow base, spiral.

Hilschenz, Hentrich glass collection, Kunstmuseum Düsseldorf 1973, no. 38.

Image online.

€ 450 - 550

**268**

**Bruno Riedel, Kamenický Šenov**

**Vase, 1940s**

One of a kind. H. 31.4 cm. Colorless glass. Scenic representation of a family painted with transparent enamel. Signed lower right in the intermediate layer: Ried.

Bruno Riedel developed his own technique. He drew the image on the glass body, then he filled the surfaces with colored enamel, there was a second firing, then glass beads were dusted on the surface and heated again in the oven, creating the frosted surface.

€ 1.200 - 1.400



**269**  
**Konrad Habermeier**  
**Vase, c. 1930**

H. 32.9 cm. Colorless glass, engraved decoration with figures, animals and plants, stylized masks and medallions above the stand.

€ 800 - 900



**270**  
**Theresienthal**  
**5 wine glasses, c. 1904**

H. 19.2-19.5 cm. Glass, colorless, fused green wavy ribbon.

Warthorst, Theresienthal, Freiburg 1996, p. 68f.

Image online.

€ 400 - 600

**270**  
**Helmut Edelmann (attr.)**  
**Vase, 1950s**

H. 22.8 cm. Colorless glass, cut, Martelé-cut and polished.

Cf. Schüly, Wilhelm von Eiff und seine Schule, Freiburg 1989, p. 76f.

€ 600 - 700

**274**  
**WMF, Geislingen**  
**'Myra' jug, c. 1925**

H. 11 cm. Amber glass, gold luster.

Applied thread with tiniest losses.

Image online.

€ 150 - 300

**275**  
**WMF, Geislingen**  
**Footed vase, c. 1930**

H. 14.5 cm. Cased glass, dark green and colorless. Rim and base black.

Image online.

€ 150 - 200

**276**  
**Vedar, Milan**  
**Compote, 1930s**

H. 4.3 cm, D. 12.3 cm. Clear glass, enamel, birds of paradise. Signed: Vedar (enamel).

Image online.

€ 100 - 150

**271**  
**Hans Christiansen**  
**2 beer glasses and a set of bowls**  
**'with serrated edge', 1904**

7 pieces. H. 20.3 cm; Ø 14.5-19 cm. Colorless glass, cut. Unsigned.

Smallest bowls with various light nicks.

Cat. Die Künstler der Mathildenhöhe, Ein Dokument Deutscher Kunst, Vol. 4, Darmstadt 1977, No. 112; Zimmermann-Degen, Hans Christiansen, Königstein / Taunus, 1981, p. 330, No. VG 3.

€ 500 - 600

**272**  
**Theresienthal**  
**6 sundae cups, c. 1904**

H. 5-5.8 cm. Glass, colorless, fused green wavy ribbon.

Warthorst, Theresienthal, Freiburg 1996, p. 68f.

Image online.

€ 400 - 600





**Tiffany Studios, New York**  
**'Dragonfly' table lamp, 1899**

H. 64 cm, Ø 51.5 cm. Shade design by Clara Driscoll. Executed around 1906. Leaded opal glass with a few colored cabochons, mainly in shades of blue, green, pink and yellow. The decor consists of seven large dragonflies with spread wings. The lead is copper-plated and has a green and brownish patina. The wings are made of finely cut copper plates, which represent the structure of the internal articulation. Bronze base, similar brown and green patina. Marked: on the inner edge of the shade on a plate TIFFANY STUDIOS NEW YORK 1495 soldered on, on the underside of the foot TIFFANY STUDIOS NEW YORK 26875 (embossed).

Cat. Louis C. Tiffany, *Masterpieces of American Art Nouveau*, Museum of Arts and Crafts, Hamburg, Cologne 1999, p. 241, cat. no. 21, ill. p. 90; Eidelberg/Gray/Hofer, *A new Light on Tiffany: Clara Driscoll and the Tiffany Girls*, New York, 2007, Clara Driscoll received a bronze medal at the Paris World Exhibition in 1900 for a Dragonfly lamp with a curved shade.

€ 35.000 - 45.000









# IMPRESSUM

## **MANAGING DIRECTOR AND AUCTIONEER:**

Askan Quittenbaum  
+49 89 273702-113  
a.quittenbaum@quittenbaum.de

## **DEPUTY MANAGING DIRECTOR:**

Dr. Claudia Quittenbaum  
+49 89 273702-111  
c.quittenbaum@quittenbaum.de

## **SPECIALISTS:**

Askan Quittenbaum  
+49 89 273702-113  
a.quittenbaum@quittenbaum.de

Faridah Younès M.A.

+49 89 273702-115  
faridah.younes@quittenbaum.de

Nadine Becker M.A.

+49 89 273702-10  
n.becker@quittenbaum.de

## **ASSISTANCE:**

Carina Schlager M.A.  
+49 89 273702-125  
c.schlager@quittenbaum.de

## **BOOK KEEPING:**

Alicja Wika  
+49 89 273702-117  
alicja.wika@quittenbaum.de

## **CATALOGUE ORDER:**

Annette Ehrenhardt  
+49 89 273702-120  
buchhaltung@quittenbaum.de

## **LOGISTIC AND SHIPPING:**

Dirk Driemeyer  
+49 89 273702-112  
dirk.driemeyer@quittenbaum.de

M2 Logistik  
+49 8121 223015  
service@m2logistik.de

Mail Boxes Etc.  
MBE Lippl Business Service  
+49 8131 37 99 132  
antique-muc@mbe-dachau.de

## **PHOTOGRAPHS:**

Jochen Splett

## **DESIGN:**

Daniela Paringer,  
design & print GbR

## **PRODUCTION AND PRINT:**

Peschke Solutions GmbH,  
München







