



# BEAD FEVER

BEADED BAGS AND BEADWORK  
FROM A GERMAN PRIVATE COLLECTION

Auction 157 F  
2 July 2021







# BEAD FEVER

## BEADED BAGS AND BEADWORK FROM A GERMAN PRIVATE COLLECTION

### AUCTION 157 F

FRIDAY 2 JULY 2021

3:00 PM

**PREVIEW:  
THERESIENSTR. 60**

Thursday	24.06.	10 am - 6 pm
Friday	25.06.	10 am - 6 pm
Saturday	26.06.	1 pm - 5 pm
Sunday	27.06.	1 pm - 5 pm
Monday	28.06.	10 am - 6 pm
Tuesday	29.06.	10 am - 3 pm
Wednesday	30.06.	10 am - 3 pm
Thursday	01.07.	10 am - 3 pm
Friday	02.07.	10 am - 3 pm

**QUITTENBAUM  
Kunstauktionen GmbH**

Managing director: Askan Quittenbaum  
Theresienstrasse 60 · D-80333 Munich  
Phone (+49) 89-27 37 02 10  
Fax (+49) 89-27 37 02 122  
E-Mail [info@quittenbaum.de](mailto:info@quittenbaum.de)  
Opening hours: Tuesday - Friday  
3 pm - 6 pm  
By appointment



Mitglied der Initiative  
Datenbank  
kritischer Werke



Bundesverband Deutscher Kunstversteigerer e.V.





Every now and then a treasure falls into our hands. A collection that was created solely by the passion of one person. From the estate of a German art historian, we present you a unique collection of around 380 beaded bags and beaded objects that have been collected over decades - beautiful, artistically crafted little pouches, bags and clutches adorned with beads, in a wide variety of patterns and color combinations. Some bags feature floral decors in pastel tones or hunting scenes, others are designed in the Art Deco style with elegant, geometric patterns in bright colors. The variety is superb. Most of the specimens are in very good condition, and there is nothing wrong with using these bags, which were well-kept in drawers and cupboards, as fashion accessories and combining them with evening dresses or dirndls. But of course they are also absolute eye-catchers as showcase objects.

The collector focused her selection on crocheted and knitted bags from the 19th and 20th centuries, and her collection illustrates the close relationship between beadwork and the history of the handbag as a fashion accessory.

The earliest bag we offer is a pouch with a coat of arms and flowers (lot 1131) from the late 18th century. Here, the finest beads were used in the rare *sablé* technique, in which the threaded beads were connected through thread loops.

The works of the 19th century are led by tobacco pouches with hunting motifs (lot 1147) and pouches with various floral decorations. A travel bag (lot 1159) makes tangible the growing desire to travel, having been initiated by the expansion of the railway network. This travel bag is also a real highlight, as it is a precursor of the handbags carried today.

Small souvenir pouches and bags, which were made around the turn of the century before last and were intended to be a souvenir of stays in Venice (lots 1247-1250), testify to travels. For the new American middle class, brought about by industrialization, bags with elaborate motifs of landmarks were manufactured, to be purchased on the Grand Tour across Europe (lots 1259, 1297).

The 1920s are particularly well represented in the collection. Gold and silver-colored steel-beaded handbags from France do credit to the Roaring Twenties, but beaded bags with geometric patterns and stylized flowers also reflect the era. They include two works by the Wiener Werkstätte, the beaded bag 'Adam and Eve' (lot 1270), by the designer Fritz Löw-Lazar, which depicts the fall of man, as well as a beaded bag with stripes in various colors (lot 1271), designed by Felice Rix-Ueno.

At this time, the industry in Schwäbisch Gmünd and Göppingen also flourished, where manufacturers such as Fritz Schauptert or Perl-Industrie GmbH had homeworkers knit beaded bags and beaded pouches. For this purpose, new motifs were designed, but Biedermeier decors were also taken up again, which makes it difficult to date the objects precisely.

As early as the Middle Ages and the early modern period, handicraft objects and utensils were embroidered with small glass beads. The popularity of bead embroidery has always been subject to fashion trends, but never completely disappeared from the arts and crafts production. This is also shown by the evening bags in the collection, such as a particularly beautiful piece by the two French designers Pierre Cardin and Charles Jourdan from the 1960s (lot 1387). The cross-section through the history of beaded bags culminates in a bead-embroidered VOGUE shopping bag, which the Italian fashion company Fendi designed exclusively for the Vogue fashion magazine for their anniversary and which is one of the highlights of the auction (lot 1389).

The offer is supplemented by numerous cases, money pouches and purses, beaded pictures, as well as necklaces and bracelets.

Eva Stangassinger B.A.



1131



1132



1133



1134

**1131 Pouch with coat of arms and flowers, c. 1780-1800**

H. 11 x 12.5 cm. Polychrome beads and silk thread in sablé technique, textile lining, crocheted drawstring.

Cf. Exh. Cat. Taschen. Eine europäische Kulturgeschichte 1500-1930, Bayerisches Nationalmuseum 2013, Munich 2013, p. 168-169.

€ 100 - 120

**1132 Memento pouch 'Andenken zum 1ten Juni 1817', 1817**

H. 16 x 11 cm. Knitted, with polychrome beads, leather lining, knitted drawstring.

€ 120 - 160

**1133 Tobacco pouch with rose border, c. 1820/30**

H. 16 x 12 cm. Knitted, with polychrome beads, leather lining. Cord missing.

€ 100 - 150

**1134 Tobacco pouch 'K. Pfingsten. 1823' with rose border and cornucopias, 1823**

H. 14.5 x 11 cm. Knitted polychrome beads, leather lining, crocheted drawstring.

€ 140 - 180





1135

**1135 Bag with cornucopias,  
1st half of the 19th century**

H. 30 x 18 cm Knitted polychrome beads, textile lining, silver bail. Bail marked: maker's mark, 800, German hallmarks. Chain with eyelets included. Originally knitted as a pouch, the silver bail was only installed later.

€ 90 - 120



1137

**1136 Pouch with floral border,  
1st half of the 19th century**

H. 10 x 13 cm. Knitted with polychrome beads, drawstring, frame with polychrome embroidery. The handle is detached on one side.

Image online.

€ 70 - 90

**1137 Pouch with floral border, c. 1830**

H. 21.5 x 15 cm. Knitted, with polychrome beads, drawstring with textile.

€ 150 - 200

**1138 Pouch with floral borders, c. 1830**

H. 25 x 14 cm. Knitted, with polychrome beads, textile lining, drawstring with textile.

€ 150 - 200

**1139 Tobacco pouch with hunting motif, c. 1830/40**

H. 16 x 12.5 cm. Knitted polychrome beads, leather lining, drawstring with brass eyelets.

Cf. Schürenberg, Glasperlarbeiten, Taschen und Beutel. Von der Vorlage zum Produkt, Munich 1998, p. 142.

Image online.

€ 80 - 100



1138

**1140 Bag with rose buds and forget-me-nots,  
1st half of the 19th century.**

H. 24 x 14 cm. Knitted, with polychrome beads, textile lining, nickel silver bail, nickel silver chain. Bail by Robert Kraft, Pforzheim, c. 1910. Marked: ALPACCA, manufacturer's mark (embossed).

€ 100 - 150

**1141 Tobacco pouch 'wohl bekoms und lange 1833',  
1833**

H. 23 x 11.5 cm. Knitted, with polychrome beads, leather lining, drawstring with leather.

Lining in need of restoration.

€ 90 - 120

**1142 Pouch with roses and forget-me-nots,  
1st half of the 19th century**

H. 37 x 16 cm. Knitted, with polychrome beads, drawstring. Image online.

€ 80 - 100

**1143 Pouch with peasant scene, 19th century**

H. 20 x 14.5 cm. Knitted polychrome beads, textile lining, crocheted drawstring, beaded wooden ball.

Image online.

€ 80 - 100





1140



1141



1144

**1144 Pouch with stylised flowers, mid-19th century**

H. 30 x 15 cm. Knitted polychrome beads, leather lining, drawstring with eyelets made of bone.

€ 100 - 150

**1145 Pouch with peasant scene, 2nd half of the 19th century**

H. 18 x 13 cm. Knitted polychrome beads, button with a bow. Drawstring and lining missing.

Image online.

€ 80 - 100

**1146 Pouch with rose motif, mid-19th century**

H. 15 x 10.5 cm. Knitted with polychrome beads, textile lining, drawstring.

€ 90 - 120



1146

**1147 Tobacco pouch with hunting motif, c. 1850**

H. 22 x 14 cm. Knitted polychrome beads, leather lining, crocheted drawstring, bead-embroidered ball.

Cf. Schürenberg, Glasperlarbeiten, Taschen und Beutel. Von der Vorlage zum Produkt, Munich 1998, p. 137.

€ 90 - 120



1147



**1148 Pouch with stylised flowers and landscape with houses, mid-19th century.**

H. 21 x 12.5 cm. Knitted polychrome beads, silk lining, drawstring with silk.

€ 100 - 150



**1149 Pouch with flowers and meander decor, mid-19th century**

H. 19 x 17 cm. Knitted polychrome beads, textile lining, crocheted drawstring.

€ 100 - 150

**1150 Pouch with flower wreath, mid-19th century**

H. 23 x 11 cm. Crocheted polychrome beads, crocheted drawstring.

€ 100 - 150

**1151 Pouch with hunting motif, 1st half of the 19th century**

H. 28 x 20 cm. Knitted polychrome beads, knitted drawstring, beaded wooden ball.

Image online.

€ 80 - 100

**1152 Pouch with flower garland, 2nd half of the 19th century**

H. 20 x 16.5 cm. Knitted polychrome beads, textile lining, crocheted drawstring.

Restored.

Image online.

€ 80 - 100

**1153 Pouch with rose border, 2nd half of the 19th century**

H. 20 x 16 cm. Knitted polychrome beads, leather lining, knitted drawstring.

Image online.

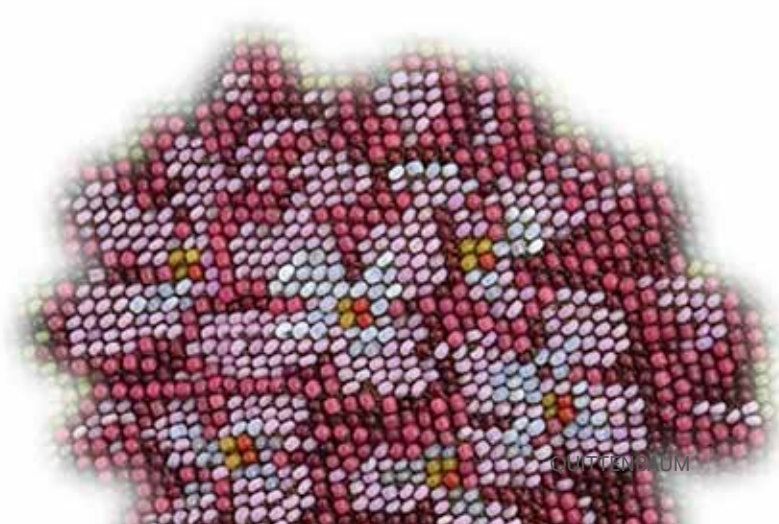
€ 80 - 100



**1154 Pouch with stylised flowers, 2nd half of the 19th century**

H. 16 x 12 cm. Knitted polychrome beads, leather lining, drawstring with plastic eyelets, beaded balls.

€ 90 - 120





**1155 Small pouch with fringes, 19th century**

H. 9.5 x 7.5 cm. Knitted, with threaded iridescent beads and metal beads, crocheted, with metal beads, crocheted drawstring.

Image online.

€ 80 - 100

**1156 Pouch with house, memorial and flower motifs, 2nd half of the 19th century**

H. 14.5 x 14.5 cm. Knitted polychrome beads, leather lining, drawstring with brass eyelets and velvet.

€ 100 - 150

**1157 'MW' tobacco pouch with flowers and animal motifs, 2nd half of the 19th century.**

H. 16 x 13 cm. Crocheted polychrome beads, leather lining, drawstring with brass eyelets.

€ 90 - 120

**1158 Large pouch with bouquet of roses, 2nd half of the 19th century**

H. 34 x 25 cm. Polychrome bead embroidery on linen canvas, textile lining, crocheted drawstring, beaded balls.

€ 100 - 150



1154



1156



1157



1158





1159

**1159 Travel bag 'Gute Reise' with carrier pigeon and railroad in a landscape, mid-19th century**

H. 24 x 48 x 27 cm. Polychrome wool embroidery and bead embroidery on linen fabric, cotton lining, brass bail, leather handles, leather trimmings.

Cf. Exh. Cat. Taschen. Eine europäische Kulturgeschichte 1500-1930, Bayerisches Nationalmuseum 2013, Munich 2013, p. 276f.

€ 400 - 600

**1160 Pouch with flower wreaths, 2nd half of the 19th century**

H. 28 x 15 cm. Crocheted polychrome beads, crocheted drawstring.

€ 100 - 150

**1161 Pouch in the shape of a jug with rose border, 2nd half of the 19th century**

H. 14 x 6.5 cm. Crocheted, with metal beads, knitted, with polychrome beads.

Image online.

€ 70 - 90

**1162 Bag with peasant scene, 2nd half of the 19th century**

H. 19.5 x 15.5 cm. Knitted polychrome beads, textile lining, brass bail, brass chain.

Image online.

€ 80 - 100

**1163 Pouch with angel and monument, 2nd half of the 19th century**

H. 15 x 14 cm. Knitted polychrome beads, polychrome bead embroidery, cotton lining.

Drawstring missing.

Image online.

€ 70 - 90





1160



1170

**1164 Bag with peasant scene,  
2nd half of the 19th century**

H. 19.5 x 15 cm. Knitted polychrome beads, textile lining, metal bail, metal chain, faceted metal stones.

[Image online.](#)

€ 70 - 90

**1165 Pouch with village scene and deer,  
2nd half of the 19th century**

H. 20 x 12.5 cm. Knitted polychrome beads, textile lining, drawstring with textile.

[Image online.](#)

€ 70 - 90

**1166 Pouch with landscape scene,  
2nd half of the 19th century**

H. 15.5 x 12 cm. Knitted polychrome beads, leather lining, crocheted drawstring, beaded wooden balls.

Cf. Schürenberg, Glasperlarbeiten, Taschen und Beutel. Von der Vorlage zum Produkt, Munich 1998, p. 61.

[Image online.](#)

€ 70 - 90

**1167 Pouch with women in nature,  
2nd half of the 19th century**

H. 18.5 x 14 cm. Knitted polychrome beads, leather lining, drawstring, beaded wooden balls.

[Image online.](#)

€ 70 - 90

**1168 Pouch with man and dogs,  
2nd half of the 19th century**

H. 18.5 x 12 cm. Knitted polychrome beads, crocheted bottom, textile lining, crocheted drawstring.

Cf. Schürenberg, Glasperlarbeiten, Taschen und Beutel. Von der Vorlage zum Produkt, Munich 1998, p. 61.

[Image online.](#)

€ 70 - 90

**1169 Pouch with peasant scene,  
2nd half of the 19th century**

H. 19.5 x 14.5 cm. Knitted polychrome beads, silk lining, drawstring with metal eyelets.

[Image online.](#)

€ 80 - 100

**1170 Pouch with a flower motif,  
2nd half of the 19th century**

H. 22 x 16.5 cm. Polychrome bead embroidery, textile lining, crocheted drawstring with metal eyelets.

Restored.

€ 90 - 120

**1171 Bag with flower motif, 2nd half of the 19th century**

H. 30 x 19 cm. Knitted polychrome beads, textile lining, metal bail, metal chain.

Clasp bent.

[Image online.](#)

€ 80 - 100





1176

**1172 Pouch with tulips and geometric shapes, 19th century**

H. 16 x 14.5 cm. Knitted polychrome beads, cotton lining, drawstring with metal eyelets.

Image online.

€ 70 - 90

**1173 Pouch with roses and forget-me-nots, 2nd half of the 19th century**

H. 34 x 20 cm. Polychrome bead embroidery, crocheted drawstring, beaded wooden ball.

Image online.

€ 90 - 120

**1174 Bag with flower motif, 2nd half of the 19th century**

H. 10 x 17 cm. Polychrome bead embroidery on textile, leather lining, brass frame, brass chain.

Image online.

€ 80 - 100



1178

**1175 Bag with floral border and monogram, 19th century**

H. 19 x 18 cm. Polychrome bead embroidery on cotton fabric, textile lining, drawstring with brass eyelets.

Image online.

€ 70 - 90

**1176 Pouch 'Johann Friesneker', 2nd half of the 19th century**

H. 16 x 16 cm. Knitted polychrome beads on cotton fabric, drawstring with brass eyelets.

€ 90 - 120

**1177 Bag with flower motif, 2nd half of the 19th century**

H. 25 x 21 cm. Polychrome bead embroidery on textile, silk lining, metal bail, metal chain, gemstones.

Image online.

€ 80 - 100



1179

**1178 Bag with Rococo lady and cavalier, 2nd half of the 19th century**

H. 26 x 22 cm. Polychrome beadwork, leather lining, metal bail, metal chain.

Cf. Schürenberg, Perle für Perle. Schwäbische Perlstickerei 1810-1935, Aachen 2014, p. 447f.

€ 100 - 150



**1179 Pouch with vedutas and floral decoration,  
2nd half of the 19th century**

H. 30 x 16 cm. Polychrome bead embroidery, cotton lining,  
crocheted drawstring, beaded wooden ball.

€ 90 - 120

**1180 Pouch 'Henri Malcoiffe',  
2nd half of the 19th century**

H. 17.5 x 10.5 cm. Crocheted, polychrome bead embroidery,  
textile lining, crocheted drawstring.

Cord missing.

Image online.

€ 80 - 100

**1181 Pouch with rose border and slogan banderole,  
2nd half of the 19th century**

H. 16.5 x 11 cm. Knitted polychrome beads, textile lining,  
crocheted drawstring.

€ 90 - 120

**1182 Pouch 'Aus Liebe' with rose borders,  
2nd half of the 19th century**

H. 19 x 16.5 cm. Knitted polychrome beads, textile lining,  
drawstring with metal eyelets.

€ 90 - 120

**1183 Pouch with geometric border,  
2nd half of the 19th century**

H. 17 x 12 cm. Crocheted polychrome beads, crocheted  
drawstring.

Image online.

€ 50 - 60

**1184 Bag with garland of flowers,  
2nd half of the 19th century**

H. 29.5 x 20 cm. Polychrome bead embroidery, textile lining,  
metal bail, metal chain.

Image online.

€ 80 - 100

**1185 Pouch with a flower motif,  
2nd half of the 19th century**

H. 13.5 x 9 cm. Polychrome bead embroidery, textile lining,  
drawstring with textile.

Image online.

€ 60 - 80



1181



1182





1188

**1186 Pouch with Monopteros,  
2nd half of the 19th century**

H. 13 x 8.5 cm. Knitted polychrome beads, leather lining, crocheted drawstring.

Lining in need of restoration.

Image online.

€ 80 - 100

**1187 Pouch with floral border,  
2nd half of the 19th century**

H. 11.5 x 11 cm. Knitted polychrome beads, linen lining.

Cord missing.

Image online.

€ 60 - 70

**1188 Pouch with village scene,  
2nd half of the 19th century**

H. 13 x 8 cm. Knitted polychrome beads, leather lining, drawstring with brass eyelets.

€ 90 - 120



1190

**1189 Pouch with floral border,  
2nd half of the 19th century**

H. 10 x 8 cm. Knitted polychrome beads, leather lining, drawstring with textile.

Image online.

€ 70 - 90

**1190 Bag with musicians and dancers, second half of  
the 19th century**

H. 35 x 17.5 cm. Polychrome beadwork, textile lining, metal braces, brass chain, beaded wooden ball.

€ 90 - 120

**1191 Bag with a bouquet of flowers, c. 1890**

H. 20 x 15 cm. Polychrome beaded embroidery, leather lining, brass bail, brass chain.

Image online.

€ 70 - 90

**1192 Pouch with a shepherd and grazing cattle,  
2nd half of the 19th century**

H. 15 x 13.5 cm. Knitted polychrome beads, leather lining, beaded wooden balls.

Drawstring missing.

€ 90 - 120

**1193 Plate of the lower part of the bag, 19th century**

H. 4.5 cm, D. 6 cm. Knitted polychrome beads.

Image online.

€ 10 - 20



**1194 Pouch with flower motif,  
2nd half of the 19th century**

H. 30 x 17.5 cm. Knitted polychrome beads, leather lining,  
drawstring with metal eyelets, beaded wooden ball.  
**€ 90 - 120**

**1195 Bag with stylised flowers,  
2nd half of the 19th century**

H. 21 x 11.5 cm. Knitted polychrome beads, crocheted  
drawstring.  
Image online.  
**€ 60 - 70**

**1196 Pouch with roses, 2nd half of the 19th century**

H. 28 x 16.5 cm. Knitted polychrome beads, leather lining,  
drawstring with looped eyelets, beaded wooden ball.  
Restored.  
Image online.  
**€ 80 - 100**

**1197 Pouch with roses, 2nd half of the 19th century**

H. 32 x 18 cm. Knitted polychrome beads, silk lining, crocheted  
drawstring, beaded wooden ball.  
Lining in need of restoration.  
Image online.  
**€ 80 - 100**

**1198 Tobacco pouch 'Aime toujours ta femme Nina M.',  
19th century**

H. 27 x 17 cm. Knitted polychrome beads, leather lining,  
crocheted drawstring.  
**€ 90 - 120**

**1199 Pouch with floral border,  
2nd half of the 19th century**

H. 16 x 14 cm. Knitted polychrome beads, silk lining, knitted  
drawstring.  
Lining in need of restoration.  
Image online.  
**€ 80 - 100**

**1200 Pouch with roses, 2nd half of the 19th century**

H. 19.5 x 11.5 cm. Crocheted polychrome beads, crocheted  
drawstring.  
Image online.  
**€ 70 - 90**



1192



1194



1198





1204



1205

**1201 Two small pouches with roses,  
2nd half of the 19th century**

H. 15 x 9 cm; H. 13.5 x 6.5 cm. Crocheted polychrome beads, crocheted drawstring.

Image online.

€ 70 - 90

**1202 Pouch with a flower motif,  
2nd half of the 19th century**

H. 18 x 7.5 cm. Crocheted polychrome beads, crocheted drawstring with clear beads.

Image online.

€ 70 - 90

**1203 Pouch with a flower motif,  
2nd half of the 19th century**

H. 22 x 17 cm. Polychrome bead embroidery on linen canvas, cotton lining, drawstring with metal eyelets.

Image online.

€ 80 - 100

**1204 Bag with a pigeon, 2nd half of the 19th century**

H. 21 x 22 cm. Knitted polychrome beads, silk lining with polychrome embroidery, brass bail, brass chain.

Pattern: Schürenberg, Glasperlarbeiten, Taschen und Beutel. Von der Vorlage zum Produkt, Munich 1998, p. 135.

€ 90 - 120

**1205 Memento pouch 'Zum Andenken',  
2nd half of the 19th century**

H. 20 x 14 cm. Knitted polychrome beads, textile lining, crocheted drawstring.

€ 100 - 150

**1206 Pouch with flower wreath and lyre,  
2nd half of the 19th century**

H. 22 x 20 cm. Knitted polychrome beads, textile lining, drawstring with textile.

Restored.

€ 90 - 120



**1207 Pouch with floral border,  
2nd half of the 19th century**

H. 17 x 10 cm. Knitted polychrome beads, textile lining,  
crocheted drawstring, beaded wooden ball.  
Lining renewed.

€ 90 - 120

**1208 Large pouch with a wreath of flowers,  
2nd half of the 19th century**

H. 38.5 x 19.5 cm. Polychrome bead embroidery on canvas,  
leather lining, crocheted drawstring.

€ 90 - 120

**1209 Evening bag with dedication 'FTB to HJB 1899',  
1899**

H. 19 x 15 cm. Crocheted blue pearls with gold shimmer, textile  
lining with polychrome bead embroidery, hinged silver clasp,  
silver chain. Silver parts by Gorham, Providence Rhode Island.  
Marked: Maker's marks, Sterling 1230 (embossed).  
Image online.

€ 80 - 100

**1210 Cut steel pouch with geometric pattern,  
c. 1900/10**

H. 21 x 14.5 cm. Woven polychrome steel beads, silk lining.  
Image online.

€ 80 - 100

**1211 Cut steel bag, c. 1900**

H. 20 x 15 cm. Embroidered steel beads on red velvet, textile  
lining, sewn-in mirror, silver bail, silver chain. Bail by Ernest  
Eschwège, Paris. Marked: maker's mark, Minerva's head.  
Image online.

€ 60 - 80

**1212 Cut steel pouch, c. 1900**

H. 20 x 12.5 cm. Embroidered steel beads on brown velvet, metal  
chain, metal eyelets, bead-embroidered ball.

Image online.

€ 60 - 80

**1213 Cut steel bag, c. 1900**

H. 15 x 18 cm. Knitted, with steel beads, textile lining, metal bail,  
metal chain.

Cf. Miller, Handtaschen. Über 400 originelle Modelle, Munich  
2007, p. 67.

Image online.

€ 60 - 80





1214

**1214 Bag with garlands of flowers, c. 1900**

H. 26.5 x 18 cm. Knitted polychrome beads, textile lining, plastic bail, metal clasp, cord, sewn-in mirror, beaded wooden ball.  
€ 100 - 150

**1215 Pouch with flower baskets, c. 1900**

H. 17 x 12 cm. Knitted polychrome beads, silk and cotton lining, metal eyelets, beaded wooden ball.  
Cord missing.  
Image online.  
€ 70 - 90

**1216 Pouch with flower motif, c. 1900**

H. 26 x 14 cm. Knitted polychrome beads, silk lining, drawstring with looped metal eyelets.  
Lining in need of restoration.  
€ 90 - 120



1216

**1217 Pouch with flower arrangement, c. 1900**

H. 27 x 12 cm. Knitted polychrome beads, crocheted drawstring, beaded wooden ball.  
€ 90 - 120

**1218 Bag with floral decoration, c. 1900**

H. 22 x 20.5 cm. Knitted polychrome beads, leather lining, brass bail, brass chain.  
Image online.  
€ 80 - 100



1217



**1219 Pouch with landscape motif, c. 1900**

H. 21 x 16 cm. Polychrome bead embroidery on linen canvas, textile lining, metal chain, metal eyelets.

€ 90 - 120

**1220 Pouch with floral borders, c. 1900**

H. 21 x 13 cm. Knitted polychrome beads, crocheted drawstring, beaded wooden ball.

Image online.

€ 80 - 100

**1221 Bag with floral motif and deer in a meadow, c. 1900**

H. 27.5 x 20.5 cm. Knitted polychrome beads, leather lining, silver bail, silver chain. Bail marked: DRGM, maker's mark, 800, German silver hallmarks.

€ 90 - 120

**1222 Monochromatic pouch, c. 1900**

H. 18 x 12.5 cm. Crocheted, with clear, gold shimmering beads, silk lining, crocheted drawstring.

Image online.

€ 40 - 50

**1223 Pouch with flower motif, c. 1900**

H. 30 x 24 cm. Knitted polychrome beads, textile lining, drawstring with looped eyelets.

Image online.

€ 80 - 100

**1224 Bag with floral motif, c. 1900**

H. 22 x 20 cm. Knitted polychrome beads, textile lining, brass bail, brass chain, gemstones.

Lining in need of restoration.

€ 100 - 150







1225

#### 1225 Bag with flowers in blue border, c. 1900

H. 28 x 18.5 cm. Knitted polychrome beads, textile lining, metal bail, metal chain. Attributed to Genova Stütz, Rechberg-Hinterweiler.

The motif was very popular and common in the province of Friesland, Netherlands.

Schürenberg, Perle für Perle. Schwäbische Perlstickerei 1810-1935, Aachen 2014, p. 344.

The motif was very popular and common in the province of Friesland, Netherlands.

€ 120 - 160

#### 1226 Four plates for bags, c. 1900

H. 22 x 19 cm; H. 15 x 11.5 cm; H. 15.5 x 12 cm; H. 13.5 x 10.5 cm. Knitted polychrome beads. Attr. to Schwäbisch Gmünd. Image online.

€ 80 - 100

#### 1227 Bag with flower motif, c. 1900

H. 18.5 x 17 cm. Polychrome beadwork, leather lining, metal bail, metal chain.

Image online.

€ 80 - 100

#### 1228 Bag with a love-in-the-mist and a butterfly, c. 1900

H. 19 x 16.5 cm. Knitted polychrome beads, silk lining, metal bail, metal chain.

Image online.

€ 80 - 100

#### 1229 Pouch with floral border, c. 1900

H. 25 x 13.5 cm. Crocheted polychrome beads, crocheted drawstring.

Image online.

€ 80 - 100

#### 1230 Pouch with roses, c. 1900

H. 24 x 13.5 cm. Crocheted polychrome beads, textile lining, drawstring with looped eyelets.

Image online.

€ 70 - 90

#### 1231 Pouch with floral decor, c. 1900

H. 20 x 14.5 cm. Knitted polychrome beads, leather lining, drawstring with metal eyelets, beaded wooden ball.

Image online.

€ 80 - 100

#### 1232 Pouch with rose motif, c. 1900

H. 19.5 x 13.5 cm. Crocheted polychrome beads, crocheted drawstring.

Image online.

€ 80 - 100

#### 1233 Six plates for pouches, c. 1900

H. 20 x 22 cm. Polychrome bead embroidery on textile.

H. 32 x 16 cm; H. 24 x 18 cm; H. 20 x 19 cm; H. 18 x 14 cm.

Knitted polychrome beads. H. 20 x 18 cm. Knitted polychrome beads, beaded wooden ball.

Image online.

€ 50 - 70





1234

**1234 Pouch with flower motif, c. 1900**

H. 30 x 17 cm. Knitted polychrome beads, knitted drawstring.  
**€ 100 - 150**

**1235 Bag with flower borders, c. 1900**

H. 21 x 16 cm. Polychrome bead embroidery, leather lining, metal bail, metal chain.

Image online.

**€ 80 - 100**

**1236 Bag with peacock, c. 1900**

H. 22 x 22 cm. Polychrome bead embroidery on linen canvas, textile lining, metal bail, metal chain.

**€ 90 - 120**

**1237 Bag with floral decor, c. 1900**

H. 26 x 22 cm. Polychrome bead embroidery, leather lining, brass bail, textile handle. Bail marked: DRGM (embossed).

Image online.

**€ 70 - 90**



1236

**1238 Bag with lyre and geometric pattern, c. 1900**

H. 19 x 17 cm. Knitted polychrome beads, textile lining, metal bail, metal chain.

Image online.

**€ 70 - 90**

**1239 Bag with smoking lady, c. 1900**

H. 27 x 21 cm. Knitted polychrome beads, textile lining, brass bail.

Handle missing.

Image online.

**€ 80 - 100**

**1240 Bag with peacock, late 19th century**

H. 21 x 12.5 cm. Knitted polychrome beads, textile lining, brass bail, brass chain, gemstones. Bail marked: Made in Czechoslovakia (embossed).

Image online.

**€ 80 - 100**



1241

**1241 Pouch with flower motif, c. 1900**

H. 24.5 x 16 cm. Knitted polychrome beads, drawstring with looped metal eyelets, beaded wooden ball.

€ 100 - 150

**1242 Pouch with grapevine, c. 1900**

H. 16 x 14 cm. Knitted polychrome beads, textile lining, drawstring with looped eyelets.

€ 100 - 150

**1243 Bag with flower motif, c. 1900**

H. 17.5 x 14 cm. Polychrome bead embroidery on linen canvas, textile lining, silver bail, silver chain. Bail made in France. Marked: Minerva's head, maker's mark.

Image online.

€ 70 - 90



1242

**1244 Bag with floral pattern, c. 1900**

H. 20 x 17.5 cm. Knitted polychrome beads, textile lining, brass bail, brass chain.

Image online.

€ 70 - 90

**1245 Pouch with silhouette motifs, c. 1900**

H. 22 x 17 cm. Bead embroidery in black and white on linen canvas, cotton lining, crocheted drawstring.

Image online.

€ 70 - 90

**1246 Two plates for bags**

H. 21 x 19 cm; H. 25 x 20 cm. Knitted polychrome beads. One eyelet from leg included.

Plate with deer: Schürenberg, Perle für Perle. Schwäbische Perlstickerei 1810-1935, Aachen 2014, p. 352.

Image online.

€ 70 - 90



**1247 Pouch 'Ricordo di Venezia', c. 1900**

H. 13 x 10.5 cm. Knitted polychrome beads, linen lining, brass eyelets.

Lining in need of restoration.

€ 120 - 160

**1248 Souvenir pouch 'Souvenir', c. 1900**

H. 23 x 14 cm. Knitted polychrome beads, silk lining, silk drawstring.

Image online.

€ 80 - 100

**1249 Souvenir pouch 'Ricordo di Venezia', um 1900**

H. 15.5 x 18 cm. Knitted polychrome beads, linen lining.

€ 100 - 150

**1250 Souvenir bag 'Souvenir De Venise', c. 1900**

H. 24 x 19 cm. Knitted polychrome beads, textile lining, metal bail, metal chain.

€ 120 - 160

**1251 Souvenir pouch 'Souvenir', c. 1900**

H. 29.5 x 13.5 cm. Knitted polychrome beads, silk lining, crocheted drawstring, wooden balls, ball crocheted from beads.

€ 90 - 120

**1252 Souvenir pouch 'Souvenir d'amitié', c. 1900**

H. 15.5 x 12 cm. Knitted polychrome beads, leather lining, knitted drawstring.

Image online.

€ 70 - 80



1247



1249



1250



1251



1253



1254



1255

**1253 Memento pouch 'Zum Andenken', c. 1900**

H. 17 x 14 cm. Knitted polychrome beads, leather lining, drawstring with textile.

€ 100 - 150

**1254 Memento pouch 'Zum Andenken', c. 1900**

H. 24 x 14 cm. Knitted polychrome beads, silk lining, drawstring with metal eyelets, bead-embroidered glass ball.

€ 90 - 120

**1255 Souvenir pouch 'Zum Andenken von Venedig', c. 1900**

H. 22.5 x 14 cm. Knitted polychrome beads, textile lining, crocheted drawstring.

€ 120 - 160

**1256 Plate for a souvenir pouch 'Ricordo di Venezia', c. 1900**

H. 13 x 11.5 cm. Knitted polychrome beads.

Image online.

€ 50 - 60

**1257 Gold-coloured bag, c. 1900**

H. 15.5 x 13.5 cm. Embroidery and embroidered gold-coloured steel beads on textile, textile lining, mirror in a side pocket, silver bail, gold-plated, gemstones. Made by E. Gauthier, Paris. Bail marked: Minerva's head, makers's mark, MADE IN PARIS (hallmarked), E. GAUTHIER 97 A. DES PETITS CHAMPS PARIS (engraved).

One tassel detached.

Image online.

€ 70 - 90

**1258 Pouch with floral border, c. 1900**

H. 16 x 11.5 cm. Knitted polychrome beads, textile lining, crocheted drawstring, yellow glass ball, beaded wooden ball.

Image online.

€ 80 - 100





1259

#### 1259 Pouch with Neuschwanstein Castle c. 1900

H. 27 x 18 cm. Knitted polychrome beads, silk lining, crocheted drawstring. Attr. to Heinrich Buck, Überkingen.

Schürenberg, *Perle für Perle*. Schwäbische Perlstickerei 1810-1935, Aachen 2014, p. 475.

€ 150 - 250

#### 1260 Large pouch with flower motif, c. 1900

H. 38 x 22 cm. Polychrome bead embroidery on linen canvas, textile lining, drawstring with plastic eyelets.

Image online.

€ 80 - 100

#### 1261 Bag with poppies, c. 1900

H. 26.5 x 20 cm. Knitted polychrome beads, silk lining, nickel silver bail, nickel silver chain. Bail by Ernst Gideon Bek, Pforzheim. Marked: ALPACCA, maker's mark.

Image online.

€ 80 - 100

#### 1262 Bag with Chinese dragon, c. 1900

H. 27 x 26 cm. Polychrome bead embroidery, textile lining, brass bail, brass chain, gemstones.

Blaser, Higgings, *A Passion for Purses*, Atglen 2007, p. 217.

€ 150 - 250



1262

#### 1263 Pouch with a fairy tale motif, c. 1900

H. 28 x 17 cm. Knitted polychrome beads, cotton lining, crocheted drawstring. Made in Württemberg.

Schürenberg, *Perle für Perle*. Schwäbische Perlstickerei 1810-1935, Aachen 2014, p. 118. Motif after Franz Xaver Unterseher, from the Grimm's fairy tale 'Brother and Sister'.

€ 100 - 150



1263





1264

#### 1264 Bag with stylised tulips, 1902

H. 18 x 12.5 cm. Polychrome bead embroidery, textile lining, silver bail, silver chain. Bail made in the Netherlands. Bail marked: Various hallmarks, date mark.

€ 100 - 150

#### 1265 Pouch with a stylised bouquet of flowers in a vase, c. 1910

H. 26 x 19 cm. Polychrome bead embroidery on linen canvas, leather lining, drawstring with metal eyelets.

€ 90 - 120

#### 1266 Two bicoloured pouches, c. 1910-20

H. 31 x 10 cm. White beads threaded between crochet stitches, crocheted drawstring, textile lining.

H. 18 x 11 cm. Blue beads threaded between crochet stitches, crocheted drawstring.

The lining of the large bag in need of restoration.

Image online.

€ 70 - 90

#### 1267 Cut steel handbag, 1910-20s

H. 22.5 x 13 cm. Woven silver-coloured and gold-coloured steel beads, textile lining, brass bail, brass chain, carnelian cabochons, gemstones.

€ 90 - 120

#### 1268 Pouch with flower motif, c. 1910-30

H. 23.5 x 18 cm. Knitted polychrome beads, drawstring with looped eyelets, beaded wooden ball.

Schürenberg, Perle für Perle. Schwäbische Perlstickerei 1810-1935, Aachen 2014, p. 610.

Image online.

€ 80 - 100



1265



1267





**1269 Cut steel handbag with rose motif, c. 1910/20**

H. 18 x 12 cm. Woven polychrome steel beads, textile lining, brass bail, brass chain. Bail marked: MADE IN FRANCE (embossed). Label inside: Made in Paris France.

Image online.

€ 60 - 70

**1270 Pouch 'Adam and Eve', 1910/10s**

H. 18 x 15 cm. Knitted polychrome beads, cotton lining, cord. Design: Fritz Löw-Lazar; Execution: Wiener Werkstätte.

Pazaurek, Von Glasperlen und Perlenarbeiten, Darmstadt 1917/18, p. 154.

€ 140 - 180

**1271 Bag with colourful stripes, 1910/20s**

H. 23 x 18 cm. Knitted polychrome beads, metal eyelets, metal chain. Design: Felice Rix-Ueno; Execution: Wiener Werkstätte.

Mentioned: Schürenberg, Glasperlarbeiten, Taschen und Beutel. Von der Vorlage zum Produkt, Munich 1998, p. 110.

€ 250 - 300

**1272 Cut steel handbag with carpet pattern, c. 1910**

H. 20 x 14 cm. Woven polychrome steel beads, textile lining, brass frame, brass chain, talisman with mustard seed.

Image online.

€ 70 - 90

**1273 Pouch with flower motif and meander, c. 1910**

H. 25 x 11.5 cm. Crocheted polychrome beads, crocheted drawstring, beaded wooden ball.

Image online.

€ 80 - 100

**1274 Pouch with flower motif, c. 1910**

H. 22.5 x 17 cm. Crocheted polychrome beads, textile lining, crocheted drawstring, beaded wooden ball.

Image online.

€ 80 - 100



1275



1278



1279



1280

**1275 Pouch with flower motif, c. 1910**

H. 25 x 13 cm. Polychrome beadwork, textile lining, crocheted drawstring, beaded wooden ball.

€ 90 - 120

**1276 Pouch with floral border, c. 1910**

H. 20 x 14.5 cm. Knitted polychrome beads, textile lining, drawstring with textile, brass acorn.

Lining in need of restoration.

Image online.

€ 80 - 100

**1277 Pouch with flower motif, c. 1910**

H. 28 x 13 cm. Polychrome beadwork, textile lining, crocheted drawstring, beaded wooden ball.

Image online.

€ 80 - 100

**1278 Pouch with flower motif, c. 1910**

H. 30 x 18 cm. Knitted polychrome beads, textile lining, crocheted drawstring, beaded wooden ball.

Lining in need of restoration.

€ 90 - 120

**1279 Pouch with flowers and geometric patterns, c. 1910**

H. 20 x 12 cm. Polychrome bead embroidery, textile lining, crocheted drawstring.

€ 90 - 120

**1280 Pouch with flower motif, c. 1910**

H. 38 x 18 cm. Polychrome bead embroidery on linen canvas, crocheted drawstring, beaded wooden ball.

€ 90 - 120





1281



1282



1284



1286

#### 1281 Bag with paisley pattern, c. 1910

H. 27 x 18 cm. Knitted polychrome beads, textile lining, brass bail, brass chain.

Lining in need of restoration.

€ 120 - 160

#### 1282 Pouch with flower motif, c. 1910

H. 25 x 14 cm. Polychrome bead embroidery on linen, cotton lining, drawstring with plastic eyelets.

€ 100 - 150

#### 1283 Chainmail Bag, c. 1900-20

H. 15 x 17 cm. Mesh made of metal rings, textile lining, nickel silver bail, nickel silver chains. Bail marked: ALPACCA (embossed).

Cf. Exh. Cat. Taschen. Eine europäische Kulturgeschichte 1500-1930, Bayerisches Nationalmuseum 2013, Munich 2013, S. 303.

Image online.

€ 50 - 60

#### 1284 Pouch with stylised floral border, c. 1910

H. 18 x 15 cm. Polychrome beads, textile lining, crocheted drawstring.

€ 90 - 120

#### 1285 Pouch with flower motif, c. 1910

H. 23 x 16 cm. Polychrome bead embroidery on cotton fabric, crocheted drawstring.

Image online.

€ 70 - 90

#### 1286 Pouch with stylised plants, c. 1910

H. 19 x 12 cm. Knitted polychrome beads, textile lining, drawstring with looped eyelets.

€ 90 - 120



1287

**1287 Pouch with grapevines and butterfly, c. 1910**

H. 22 x 14 cm. Knitted polychrome beads, textile lining, crocheted drawstring.

€ 100 - 150



1288

**1288 Pouch with flower motif, c. 1910**

H. 28 x 18 cm. Polychrome bead embroidery, crocheted drawstring, bead embroidered ball.

€ 90 - 120

**1289 Cut steel pouch with cornucopia, c.1910**

H. 18 x 15 cm. Woven polychrome steel beads.

Cord missing.

Image online.

€ 80 - 100

**1290 Pouch with rose motif, c. 1910**

H. 18 x 15 cm. Polychrome bead embroidery on cotton fabric, crocheted drawstring.

Drawstring partially detached.

Image online.

€ 80 - 100

**1291 Bag with robin and flower branch, 1st half of the 20th century**

H. 30 x 18 cm. Polychrome bead embroidery, textile lining, plastic bail, plastic chain.

€ 100 - 150

**1292 Pouch with a stylised flower meadow, c. 1910**

H. 25.5 x 15 cm. Threaded polychrome beads, textile lining, drawstring with bone eyelets.

Image online.

€ 80 - 100



1291

**1293 Pouch with meander, c. 1910**

H. 17.5 x 13.5 cm. Knitted iridescent and gold-coloured beads, silk lining, drawstring with brass eyelets, wire tassels.

Image online.

€ 50 - 60





**1294 Pouch with flower motif, c. 1910**

H. 30 x 13.5 cm. Polychrome bead embroidery on cotton fabric, crocheted cord pull, bead embroidered wooden ball.  
**€ 100 - 150**

**1295 Monochromatic bag, c. 1910**

H. 22 x 14 cm. Knotted blue beads, silk crepe lining, metal bail, metal chain.  
Image online.  
**€ 50 - 60**

**1296 Bag with a flower motif, c. 1910**

H. 19 x 19.5 cm. Polychrome bead embroidery on linen canvas, leather lining, brass bail, cord.  
Image online.  
**€ 80 - 100**

**1297 Bag with Nuremberg castle, c. 1910**

H. 27 x 17.5 cm. Knitted polychrome beads, brass bail, brass chain, gemstones.  
Schürenberg, Perle für Perle. Schwäbische Perlstickerei 1810-1935, Aachen 2014, p. 240.  
**€ 150 - 200**

**1298 Pouch with roses, c. 1910**

H. 27 x 16 cm. Knitted polychrome beads, leather lining, drawstring with looped metal eyelets.  
Image online.  
**€ 80 - 100**

**1299 Bag with Palazzo Ducale, c. 1910**

H. 30 x 21 cm. Knitted polychrome beads, textile lining, brass bail, brass chain. Bail marked: Made in France (embossed).  
Cf. Schürenberg, Perle für Perle. Schwäbische Perlstickerei 1810-1935, Aachen 2014, p. 270.  
**€ 160 - 220**





1300

**1300 Bag with carpet pattern, c. 1910**

H. 26.5 x 16.5 cm. Knitted polychrome beads, leather lining, enamelled brass bail, brass chain, marcasites, gemstone.

€ 120 - 160

**1301 Bag with carpet pattern, c. 1910**

H. 18.5 x 16 cm. Woven polychrome beads, textile lining, brass bail, brass chain.

€ 90 - 120

**1302 Flap bag with flower arrangement, c. 1910**

H. 12.5 x 14.5 cm. Woven polychrome beads, leather lining. Image online.

€ 70 - 90

**1303 Bag with bouquet of flowers and garland, 1st third of the 20th century.**

H. 19 x 16.5 cm. Polychrome bead embroidery on linen canvas, textile lining, metal bail, cord.

Image online.

€ 80 - 100



1301

**1304 Evening pouch with floral motif, 1st half of the 20th century**

H. 31 x 18 cm. Crocheted polychrome beads, bead embroidery on mesh, textile lining, crocheted drawstring.

€ 90 - 120

**1305 'Glöcklestage' pouch, c. 1920-30**

H. 29 x 21 cm. Knitted polychrome beads, textile lining, drawstring with looped eyelets. Attr. to Schwäbisch Gmünd. Schürenberg, Glasperarbeiten, Taschen und Beutel. Von der Vorlage zum Produkt, Munich 1998, p. 214.

The bag with the bellflower was one of the most popular and successful motifs in the Swabian bead bag industry.

€ 90 - 120

**1306 'Glöcklestage' pouch, c. 1920-30**

H. 27 x 19 cm. Knitted polychrome beads, embroidered textile lining, drawstring with looped brass eyelets. Attr. to Schwäbisch Gmünd.

Cf. Schürenberg, glass beadwork, bags and pouches. From the template to the product, Munich 1998, p. 214.

Image online.

€ 80 - 100



1304





1305



1307

**1307 Pouch with flower meadow, c. 1920-30**

H. 17 x 10.5 cm. Knitted polychrome beads, textile lining, drawstring with looped eyelets. Design: Martha May; Execution: Gmünder Perl-Industrie.

Schürenberg, Perle für Perle. Schwäbische Perlstickerei 1810-1935, Aachen 2014, p. 404.

The triangular format of the bag is extremely rare.

€ 90 - 120

**1309 Cut steel pouch with rose motif, c. 1920**

H. 16.5 x 12.5 cm. Woven polychrome steel beads, textile lining. Image online.

€ 80 - 100

**1310 Cut steel pouch with flower arrangement, c. 1920**

H. 20 x 16 cm. Woven silver and black steel beads, silk lining. Image online.

€ 80 - 100

**1308 Cut steel flap bag with geometric pattern, c. 1920**

H. 15 x 15 cm. Woven black and silver-coloured steel beads, decorative bead.

Attr. to Austria.

Cf. Johnson, Handtaschen. Die Geschichte eines Kultobjekts, Potsdam 2005, p. 94.

€ 90 - 120

**1311 Cut steel pouch with flower motif, c. 1920**

H. 18 x 15 cm. Woven polychrome steel beads. Cord missing.

€ 90 - 120



1308



1311



1313

**1312 Cut steel handbag with geometric pattern, c. 1920**

H. 21 x 15 cm. Woven polychrome steel beads, textile lining, metal bail, metal chain.

[Image online.](#)

€ 60 - 80

**1313 Cut steel flap bag with geometric pattern, c. 1920**

H. 15 x 15 cm. Woven polychrome steel beads, mother-of-pearl button.

€ 90 - 120



1315

**1314 Cut steel flap bag with geometric pattern, c. 1920**

H. 11 x 10 cm. Woven silver-coloured and black steel beads, gemstones, textile lining.

[Image online.](#)

€ 80 - 100

**1315 Evening pouch with stylised flower baskets, c. 1920**

H. 26.5 x 15 cm. Polychrome bead embroidery on mesh, textile lining, crocheted drawstring, gemstone.

€ 100 - 150

**1316 Pouch with flower motif, 1st half of the 20th century**

H. 27 x 13 cm. Polychrome bead embroidery, textile lining, crocheted drawstring, bead embroidered balls.

[Image online.](#)

€ 80 - 100



1317



1318





1322



1323

**1317 Art Deco pouch with stylised flower, c. 1920**

H. 31 x 15.5 cm. Knitted polychrome beads, textile lining, crocheted drawstring, beaded wooden ball.

€ 180 - 220

**1318 Art Deco pouch with carpet pattern, c. 1920**

H. 23 x 16 cm. Knitted polychrome beads, textile lining, crocheted drawstring, beaded wooden ball.

€ 100 - 150

**1319 Pouch with a cornucopia, c. 1920**

H. 26 x 16 cm. Knitted polychrome beads, textile lining, sewn-in mirror, drawstring with looped eyelets. Attr. to Fritz Schauptert, Göppingen.

Pattern: Schürenberg, Perle für Perle. Schwäbische Perlstickerei 1810-1935, Aachen 2014, p. 454.

Image online.

€ 80 - 100

**1320 Pouch with flower motif, c. 1920**

H. 27 x 15 cm. Knitted polychrome beads, textile lining, crocheted drawstring, beaded wooden ball.

Schürenberg, Glasperlarbeiten, Taschen und Beutel. Von der Vorlage zum Produkt, Munich 1998, p. 225.

Image online.

€ 80 - 100

**1321 Pouch with flower garlands, c. 1920**

H. 25 x 14 cm. Knitted polychrome beads, textile lining, drawstring with looped metal eyelets. Attr. to Hedwig Wortsmann, Göppingen.

Lining in need of restoration.

Schürenberg, Perle für Perle. Schwäbische Perlstickerei 1810-1935, Aachen 2014, p. 702.

Image online.

€ 80 - 100

**1322 Art Deco pouch with stylised petals, c. 1920**

H. 31 x 19 cm. Knitted polychrome beads, textile lining, crocheted drawstring, beaded wooden ball.

€ 180 - 220

**1323 Bag with carpet pattern, c. 1920**

H. 31 x 23 cm. Knitted polychrome beads, leather lining, mirror in side pocket, silver bail, silver chain. Schwäbisch Gmünd. Bail by Gustav Hauber. Marked: maker's mark, 800, German silver hallmarks.

€ 180 - 220





1324

**1324 Evening pouch with floral decoration, c. 1920**

H. 26 x 26 cm. Polychrome bead embroidery on mesh, textile lining, crocheted fastener ring.

€ 100 - 150

**1325 Art Deco bag with graphic pattern, c. 1920**

H. 21.5 x 21.5 cm. Polychrome bead embroidery, textile lining, metal bail, metal chain, gemstones.

€ 180 - 220

**1326 Evening bag with abstract shapes, c. 1920**

H. 19 (28) x 15 cm. Polychrome bead embroidery, cotton lining, plastic handles.

€ 150 - 250

**1327 Art Deco bag with stylised flowers, c. 1920**

H. 26 x 17.5 cm. Polychrome bead embroidery, textile lining, plastic frame.

€ 100 - 150

**1328 Pouch with flower garland, c. 1920**

H. 23.5 x 16.5 cm. Knitted polychrome beads, textile lining, drawstring with looped eyelets. Attr. to Swabia.

Schürenberg, Perle für Perle. Schwäbische Perlstickerei 1810-1935, Aachen 2014, p. 464, 670f.

Image online.

€ 80 - 100



1325



1326



**1329 Art Deco pouch with geometric pattern, c. 1920**

H. 23 x 12.5 cm. Knitted polychrome beads, drawstring with looped brass eyelets, beaded wooden ball.

€ 100 - 150

**1330 Art Deco bag with stylised bellflowers, c. 1920**

H. 29 x 15 cm. Knitted polychrome beads, crocheted drawstring, bead-embroidered ball.

€ 90 - 120

**1331 Pouch with geometric shapes, c. 1920**

H. 28 x 23 cm. Threaded polychrome beads, textile lining, drawstring.

Image online.

€ 80 - 100

**1332 Pouch with flower arrangement, c. 1920**

H. 17 x 1.6 cm. Knitted polychrome beads, silk lining, drawstring with eyelets made of bone.

Some eyelets detached.

Image online.

€ 70 - 90

**1333 Cut steel handbag with carpet pattern, c. 1920**

H. 27 x 18 cm. Embroidered silver and pink steel beads, textile lining, metal bail, metal chain. Brail marked: GERMANY (embossed).

€ 90 - 120



1327



1329



1330



1333





1335



1336



1337



1339

#### 1334 Pouch with stylised flowers, c. 1920

H. 26.5 x 13.5 cm. Polychrome bead embroidery on textile, textile lining, drawstring with eyelets made of bone and silk.  
Image online.

€ 70 - 90

#### 1335 Art Deco bag with geometric shapes, c. 1920

H. 20 x 13.5 cm. Knitted polychrome beads, textile lining, metal chain, metal eyelets.

Attr. to Karl Seyfang, Göppingen.

Cf. Schürenberg, *Perle für Perle. Schwäbische Perlstickerei 1810-1935*, Aachen 2014, p. 677.

€ 180 - 220

#### 1336 Art Deco pouch with geometric pattern, c. 1920

H. 27 x 18 cm. Knitted polychrome beads, textile lining, crocheted drawstring, beaded wooden ball.

€ 90 - 120

#### 1337 Art Deco bag with carpet pattern, c. 1920

H. 23 x 16 cm. Knitted polychrome beads, leather lining, brass bail, brass chain.

€ 90 - 120

#### 1338 Art Deco bag with geometric shapes and monogram 'MB', c. 1920

H. 29 x 16 cm. Woven polychrome beads, textile lining, metal bail, metal chain, gemstones.

Image online.

€ 80 - 100





1340

**1339 Evening bag with a geometric pattern, c. 1920**

H. 16.5 (32.5) x 18 cm. Woven polychrome beads, textile lining, crocheted drawstring.

€ 90 - 120

**1340 Monochromatic wrist bag, c. 1920**

H. 32.5 x 16 cm. Crocheted blue beads, textile lining.

€ 90 - 120

**1341 Art Deco bag with carpet motif, c. 1920**

H. 25.5 x 19 cm. Knitted polychrome beads, textile lining, metal bail, metal chain, gemstones.

€ 90 - 120



1341

**1342 Pouch with geometric shapes, c. 1920**

H. 13.5 x 11.5 cm. Knitted polychrome beads, crocheted drawstring.

Image online.

€ 60 - 80

**1343 Art Deco bag with lions and geometric pattern, c. 1920**

H. 22.5 x 27 cm. Polychrome bead embroidery, textile lining, brass bail, cord, gemstones.

€ 100 - 150

**1344 Bag with floral decoration, c. 1920**

H. 31 x 20.5 cm. Knitted polychrome beads, leather lining, silver bail, silver chain. Attr. to Schwäbisch Gmünd. Bail by Martin Mayer, Mainz. Marked: maker's mark, 800.

Schürenberg, Glasperlarbeiten, Taschen und Beutel. Von der Vorlage zum Produkt, Munich 1998, p. 210.

€ 90 - 120



1343



1344

**1345 Pouch with stylised bellflowers, c. 1920**

H. 28.5 x 15.5 cm. Knitted polychrome beads, textile lining, woven drawstring made of metal threads, bead-embroidered wooden balls.  
Image online.  
**€ 80 - 100**

**1346 Pouch with checkered pattern, c. 1920**

H. 24 x 16.8 cm. Crocheted clear and green beads, textile lining, crocheted drawstring.  
**€ 60 - 80**

**1347 Pouch with floral borders, c. 1920**

H. 25 x 14 cm. Polychrome bead embroidery on linen, textile lining, crocheted drawstring.  
Restored.  
**€ 90 - 120**

**1348 Pouch with carpet pattern, c. 1920**

H. 25.5 x 17 cm. Polychrome bead embroidery on textile, silk crepe lining, crocheted drawstring.  
**€ 90 - 120**

**1349 Pouch with geometric pattern, c. 1920**

H. 26 x 14.5 cm. Knitted and crocheted with polychrome beads, polychrome bead embroidery on cotton fabric, crocheted handle, tassels with gemstones.  
Image online.  
**€ 60 - 80**

**1350 Evening bag with gemstones, c. 1920**

H. 14 x 13.5 cm. Mounted polychrome gemstones on metal threads, textile lining, metal clasp with gemstones.  
Perfume bottle included.  
**€ 90 - 120**

**1351 Cut steel flap bag, c. 1920**

H. 12 x 14 cm. Woven polychrome steel beads, cut colourless gemstones, textile lining, metal press fastener.  
Image online.  
**€ 80 - 120**

**1352 Cut steel pouch with gemstones, c. 1920**

H. 14 x 13 cm. Woven steel beads, polished, colourless gemstones, ribbon.  
Image online.  
**€ 90 - 100**

**1353 Monochromatic pouch, c. 1920**

H. 27 x 15 cm. Polychrome beads threaded between crochet stitches, textile lining, drawstring with plastic eyelets.  
Image online.  
**€ 70 - 90**

**1354 Monochrome evening pouch, c. 1920**

H. 30 x 13 cm. Crocheted black beads, silk lining, drawstring with looped eyelets.  
Image online.  
**€ 60 - 70**

**1355 Evening bag with a geometric pattern, c. 1920**

H. 10 x 16 cm. Polychrome bead embroidery, textile lining, brass hinge clasp, brass chain. Clasp marked: MODELE FM DEPOSE.  
**€ 90 - 120**

**1356 Monochrome evening pouch,  
1st half of the 20th century**

H. 32 x 14.5 cm. Colourless bead embroidery and embroidered iridescent sequins on mesh, textile lining, drawstring, bead-embroidered wooden ball.  
Image online.  
**€ 80 - 100**

**1357 Monochrome evening pouch, c. 1920**

H. 21.5 x 22 cm. Crocheted black beads, textile lining, drawstring.  
Image online.  
**€ 60 - 70**

**1358 Evening pouch with peacock eyes, c. 1920**

H. 20 x 13 cm. Polychrome bead embroidery on mesh, textile lining, crocheted drawstring.  
Lining in need of restoration.  
**€ 90 - 120**







1359

**1359 Cut steel handbag with carpet pattern, c. 1920**

H. 27.5 x 14 cm. Woven polychrome steel beads, textile lining, mirror in a side pocket, brass bail, brass chain. Label inside: MADE IN FRANCE.

€ 150 - 250

**1360 Cut steel pouch with geometric pattern, c. 1920**

H. 24 x 17 cm. Woven polychrome steel beads.  
Image online.

€ 80 - 100



1361

**1361 Pouch with carpet pattern, c. 1920**

H. 24 x 18.5 cm. Knitted polychrome beads, crocheted drawstring.

€ 90 - 120

**1362 Pouch with carpet pattern, c. 1920**

H. 27.5 x 18 cm. Knitted polychrome beads, textile lining, cord.

€ 120 - 160

**1363 Pouch with carpet pattern, c. 1920**

H. 29 x 20.5 cm. Knitted polychrome beads, linen lining, crocheted drawstring.

€ 100 - 150



1362



1363



**1364 Cut steel flap bag 'M', c. 1920**

H. 10 x 12.5 cm. Woven silver-coloured and gold-coloured steel beads.

€ 90 - 120

**1365 Bag with floral motif, c. 1920**

H. 30 x 18.5 cm. Knitted polychrome beads, textile lining, metal bail, metal chain.

Schürenberg, Perle für Perle. Schwäbische Perlstickerei 1810-1935, Aachen 2014, p. 715.

€ 100 - 150

**1366 Cut steel flap bag with floral motif, c. 1920**

12 x 16 cm. Woven polychrome steel beads, metal press fastening.

Image online.

€ 80 - 100

**1367 Two flap bags with geometric pattern, c. 1920**

H. 11 x 13.5 cm. Woven blue and green beads, leather lining. H. 13.5 x 14.5 cm. Woven turquoise and red beads, leather lining.

Image online.

€ 90 - 120

**1368 Pouch with carpet pattern, c. 1920**

H. 17 x 13 cm. Woven polychrome beads, drawstring with silk.

€ 90 - 120

**1369 Flap bag with geometric pattern, c. 1920**

H. 11.5 x 12 cm. Woven polychrome beads, leather lining.

€ 90 - 120





1372



1373



1374



1375

**1370 Art Deco bag with geometric shapes and stylised birds, c. 1920**

H. 20 x 14 cm. Knitted polychrome beads, textile lining, brass bail, brass chain.

Image online.

€ 80 - 100

**1371 Cut steel handbag with carpet pattern, c. 1920**

H. 20 x 10.5 cm. Woven polychrome steel beads, textile lining, brass bail, brass chain.

Image online.

€ 60 - 80

**1372 Art Deco pouch with geometric pattern, c. 1920**

H. 19 x 14.5 cm. Knitted black and white beads, leather lining, crocheted drawstring, bead-embroidered balls.

€ 120 - 160

**1373 Art Deco pouch with stylised flowers, c. 1920**

H. 22 x 14 cm. Knitted polychrome beads, textile lining, crocheted drawstring.

€ 180 - 220

**1374 Art Deco pouch with geometric pattern, c. 1920**

H. 19 x 13 cm. Polychrome bead embroidery on linen canvas, textile lining, crocheted drawstring.

€ 100 - 150

**1375 Art Deco pouch with stylised birds and flowers, c. 1920**

H. 26.5 x 16 cm. Knitted polychrome beads, textile lining, crocheted drawstring, bead-embroidered wooden ball.

€ 100 - 150





1376

**1376 Cut steel handbag with carpet pattern, c. 1920**

H. 20 x 22 cm. Woven polychrome steel beads, textile lining, wallet in a side pocket, brass bail, brass chain, carnelian cabochons. Bail marked: MADE IN FRANCE (embossed).

€ 90 - 120

**1377 Two evening pouches, 1920s**

H. 23 x 20 cm; H. 18,5 x 16 cm. Threaded polychrome beads between crochet stitches, cotton lining, drawstring. Made in USA.

Johnson, Handtaschen. Die Geschichte eines Kultobjekts, Potsdam 2005, p. 85.

€ 100 - 150

**1378 Bag with carpet pattern, c. 1930**

H. 21 x 22 cm. Knitted polychrome beads, textile lining, brass bail, brass chain.

Image online.

€ 90 - 120

**1379 Bag with Pharaoh, c. 1930**

H. 27 x 21.5 cm. Polychrome bead embroidery on mesh, silk lining, plastic bail. Bail marked: MADE IN FRANCE (embossed). Handle is missing.

€ 200 - 300



1377



1379



1381



1382

#### 1380 Pouch with floral border, 1st half 20th century

H. 22.5 x 13.5 cm. Knitted polychrome beads, crocheted drawstring, textile lining, bead-embroidered ball.

Image online.

€ 80 - 100

#### 1381 Evening bag with stylised flowers, 1st half of the 20th century

H. 10 (21.5) x 16 cm. Black and white bead embroidery, textile lining, mirror in side pocket, metal clasp.

€ 90 - 120

#### 1382 Evening bag, c. 1930

H. 15.5 x 21 cm. Polychrome bead embroidery, textile lining, brass bail, mirror and wallet in side pockets.

Label inside: CERNY PARIS.

€ 150 - 250

#### 1383 Two belt pouches, c. 1930

H. 12.5 x 14.5 cm. Black and red bead embroidery on textile, textile lining, mirror in side compartment, brass fastener. Made in France.

€ 120 - 160

#### 1384 Box bag with a floral motif, 1930s

H. 19.5 x 15 x 7.3 cm. Polychrome bead embroidery on canvas, textile lining, brass frame, brass chain. Label inside: An M.E. product "It speaks for Itself".

€ 100 - 150

#### 1385 Handbag with stylised flowers, 20th century

H. 16 x 19 cm. Colourless and black bead embroidery on textile, textile lining, metal press fastener, cord.

Image online.

€ 80 - 100



**1386 Evening bag with stylised sunflowers, 20th century**

H. 16 (28) x 20 cm. Polychrome bead embroidery, textile lining, wallet in a side pocket, brass bail, bead-embroidered handle. Image online.

€ 80 - 100

**1387 Evening bag with blossom, 1960s**

H. 14 x 22 cm. Polychrome bead embroidery, silk lining, brass frame, brass chain. Label inside: PIERRE CARDIN, CHARLES JOURDAN, PARIS, MADE IN FRANCE.

With ear clips.

€ 150 - 200

**1388 Clutch, 20th century**

H. 12 x 18 cm. Black and white bead embroidery, textile, metal press fastener.

Image online.

€ 50 - 60



1383



1384



1387

On the occasion of the 20th anniversary of German Vogue, the authority of the fashion world invited the who's who of fashion houses, jewelers and photographers to design 58 cult objects. Each of the pieces was only available in a strictly limited edition and could be freely purchased by Vogue readers according to the motto 'first come first serve'.

One of the exclusive creations was the VOGUE shopping bag contributed by the Italian luxury label Fendi. The handbag was embroidered with the finest, differently colored beads, only the Vogue letters and parts of the Fendi monogram were embroidered with a woolen thread.

Other designs, such as the shoes by Manolo Blahnik and Sergio Rossi, show how en vogue beadwork was. The beaded and wool-embroidered Fendi monogram makes the bag an absolutely fashionable highlight even more than 20 years later.



### 1389 VOGUE-Shopping-Bag, 1999

H. 41 x 45 x 26 cm. Polychrome bead embroidery, polychrome embroidery, silk lining, lizard leather handle, lizard leather trim inside. Made by Fendi, Rome. Marked inside: FENDI MADE IN ITALY.

With Fendi dust bag and label in the bag Vogue edition enclosed. Limited edition of 20 pieces.

Vogue October 1999, p. 354.

€ 900 - 1.200







**1390 Evening bag, 2000s**

H. 28 x 23 cm. Embroidered and threaded polychrome beads, lined polyester, metal press fastener. Made by Hennes & Mauritz, Stockholm. Label inside: H&M.

Image online.

€ 10 - 20

**1391 Masonic wallet, 1st half of the 19th century**

H. 14 x 19 cm. Polychrome bead embroidery on linen canvas, silk crepe lining, silk crepe ribbons.

€ 100 - 150

**1392 Masonic wallet, 19th century**

H. 13 x 17 cm. Polychrome bead embroidery on linen canvas, silk lining with embroidered monogram, cord.

€ 90 - 120

**1393 Miser's purse with eagles in laurel wreaths, 19th century**

6 x 19.5 cm. Knitted polychrome beads, brass ring. Marked: DSW (engraved).

Cf. Schürenberg, *Perle für Perle. Schwäbische Perlstickerei 1810-1935*, Aachen 2014, p. 53.

Image online.

€ 30 - 40

**1394 Miser's purse with deer, 19th century**

H. 6 x 37 cm. Crocheted, polychrome bead embroidery, metal rings.

Cf. Holm, *Glasperlen. Mythos, Schmuck und Spielereien aus fünf Jahrtausenden*, Munich 1984, p. 89.

€ 90 - 120

**1395 Cut steel miser's purse, 19th century**

H. 6.5 x 43 cm. Crocheted, with steel beads, metal rings.

Image online.

€ 60 - 70

**1396 Cut steel miser's purse, 19th century**

H. 6 x 30 cm. Crocheted, with steel beads, metal rings.

Image online.

€ 60 - 70

**1397 Cut steel miser's purse, 19th century**

H. 5.5 x 37 cm. Crocheted, with steel beads, metal rings.

Image online.

€ 80 - 100

**1398 Cut steel miser's purse, 19th century**

H. 4.5 x 36 cm. Crocheted, with steel beads, brass rings.

Image online.

€ 80 - 100

**1399 Cut steel miser's purse, 19th century**

H. 5.5 x 25 cm. Crocheted, with steel beads, metal ring.

Image online.

€ 50 - 60

**1400 Cut steel miser's purse, 19th century**

H. 4.5 x 27 cm. Crocheted, with steel beads, metal rings.

Image online.

€ 50 - 60

**1401 Miser's purse, 19th century**

6 x 23.5 cm. Knitted polychrome beads.

Ring missing.

Image online.

€ 30 - 40

**1402 Pouch with roebuck, 19th century**

14 x 6 cm. Polychrome bead embroidery on linen canvas, crocheted top.

Image online.

€ 40 - 50

**1403 Wallet with initials 'D.B.', 19th century**

H. 2.3 x 10 x 15 cm. Polychrome bead embroidery and embroidery on cardboard, leather, textile lining, notebook, metal clasps.

Image online.

€ 40 - 50

**1404 Wallet with crochet pattern, 1877**

H. 12 x 10.5 cm. Knitted, with colorless beads, textile lining, silver bail. Bail made in the Netherlands. Marked: silver hall mark (Dutch Minerva), date mark.

Image online.

€ 40 - 50

**1405 Wallet with House and Beehive, 19th Century**

H. 18 x 12.5 cm. Polychrome bead embroidery, leather, textile lining with polychrome embroidery.

Locking rod is missing.

Image online.

€ 50 - 60





1391



1392



1394

#### 1406 Purse with grapevines and abstract decor, 2nd half of the 19th century

H. 11.5 x 8 cm. Knitted polychrome beads, textile lining, brass frame.

[Image online.](#)

€ 80 - 100

#### 1407 Three purses, 2nd half of the 19th century

H. 9.5 x 7.5 cm. Polychrome bead embroidery, velvet lining, metal bail.

H. 10.5 x 7.5 cm. Polychrome bead embroidery on linen canvas, textile lining, metal bail. H. 11 x 7 cm. Knitted polychrome beads, textile lining, metal bail.

[Image online.](#)

€ 60 - 80

#### 1408 Three purses with floral motifs, 2nd half of the 19th century

H. 11.5-12 x 8 cm.

Knitted polychrome beads, crocheted top and bottom, brass bail.

Knitted polychrome beads, silk lining, brass bail, brass chain, bead-embroidered wooden ball.

Woven polychrome beads, textile lining, brass bail.

1x lining in need of restoration.

[Image online.](#)

€ 80 - 100

#### 1409 Three purses with handles, 2nd half of the 19th century

H. 8.5 x 6.5 cm. Crocheted, steel bead embroidery, metal bail, metal chain.

H. 7 x 5.5 cm. Crocheted, with steel beads, metal bail, metal chain.

H. 11 x 7.5 cm. Crocheted, with steel beads, metal bail.

[Image online.](#)

€ 40 - 50

#### 1410 Miser's purse, 19th century

18 x 84 cm. Steel bead embroidery, velvet, textile lining.

[Image online.](#)

€ 60 - 70

#### 1411 Pouch with shore scene, 19th century

H. 13 x 20 cm. Knitted polychrome beads, cotton lining, zip.

Lining and zip added later. Lining in need of restoration.

[Image online.](#)

€ 80 - 100

#### 1412 Tam O'Shanter coin purse, c. 1890

H. 4.5 x 5.5 x 6 cm. Crocheted, with metal beads, metal clasp. Clasp marked: PAT MAR 25 90 (embossed).

Ettinger, Handbags, West Chester 1991, p. 58.

[Image online.](#)

€ 40 - 50

#### 1413 Wallet, c. 1900

5.5 x 11 cm. Bead embroidery on cotton fabric, textile lining, glass buttons.

[Image online.](#)

€ 80 - 100

#### 1414 Wallet with rose border, c. 1900

H. 10 x 15 cm. Knitted polychrome beads, silk lining, glass button.

€ 90 - 120



1414



#### 1415 Purse with rose garland, c. 1900

H. 7 x 8 cm. Polychrome bead embroidery, leather lining, metal bail.

[Image online.](#)

€ 40 - 50

#### 1416 Five plates for purses, c. 1900

H. 8 x 7 cm. Knitted polychrome beads, textile lining.

H. 12.3 x 9 cm. Polychrome bead embroidery on textile.

H. 9.5 x 8.5 cm. Polychrome pearl embroidery on textile, textile lining.

H. 9 x 8 cm. Woven polychrome beads.

H. 8 x 7 cm. Knitted polychrome beads, leather lining.

[Image online.](#)

€ 30 - 50

#### 1417 Wallet with floral decor, c. 1900

D. 10 cm. Polychrome bead embroidery, textile lining, zip.

[Image online.](#)

€ 30 - 40

#### 1418 Two purses with handle, c. 1900

H. 12 x 10.5 cm. Knitted polychrome beads, velvet braid, silk lining, brass bail, brass chain.

H. 10 x 8.5 cm. Knitted polychrome beads, silk lining, brass bail, brass chain with pin.

Lining in need of restoration.

[Image online.](#)

€ 60 - 80

#### 1419 Purse with geometric shapes, c. 1920

H. 10 x 15 cm. White and black bead embroidery on canvas, textile lining, metal press fastener.

[Image online.](#)

€ 80 - 100

#### 1420 Purse with geometric shapes, c. 1920

H. 10 x 11.5 cm. Polychrome bead embroidery on canvas, textile lining, metal press fastener. Label inside: MADE IN FRANCE.

[Image online.](#)

€ 80 - 100

#### 1421 Purse, c. 1920

H. 9 x 7 cm. Polychrome bead embroidery, leather lining, metal bail.

[Image online.](#)

€ 30 - 40

#### 1422 Biedermeier wallet, 1st half of the 19th century

H. 6.5 x 7.5 cm. Polychrome bead embroidery on cotton fabric, leather lining.

Button enclosed.

[Image online.](#)

€ 40 - 50

#### 1423 Purse, 20th century

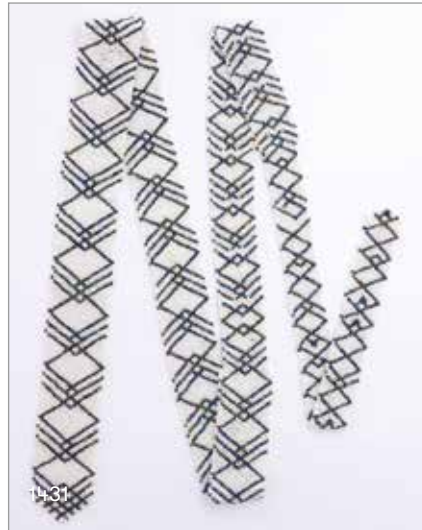
H. 14 x 6 cm. Crocheted polychrome beads, velvet lining. Attr. to Turkey.

Cf. Crabtree/Stallebrass, Atlas der Perlenarbeiten, Bern et al. 2002, p. 143.

[Image online.](#)

€ 40 - 50





**1424 Bracelet, 1st half of the 19th century**

5.7 x 18 cm. Polychrome bead embroidery, silk, silver clasp, horn clasp. Clasp marked: hallmark (Neuenburg Silber 13-lot).  
**€ 150 - 200**

**1425 Bracelet with stylised flowers, 19th century**

2.5 x 15.5 cm. Polychrome bead embroidery on canvas, textile, brass clasp.  
 Image online.  
**€ 60 - 70**

**1426 Three chokers, c. 1900**

2 x 37 cm; 2.3 x 37.5 cm; 2.8 x 37.5 cm. Threaded and woven polychrome beads, textile, metal press fasteners.  
 Image online.  
**€ 40 - 50**

**1427 Necklace, c. 1900**

L. 61 cm. Threaded white glass beads with powder melts, clear and polychrome beads, brass clasps. Made in Murano.  
**€ 100 - 150**

**1428 Traditional costume brooch, c. 1900**

H. 3.5 x 5 cm. Polychrome bead embroidery on textile, metal needle.  
 Image online.  
**€ 30 - 40**

**1429 Bead ribbon with a geometric pattern, 1910/20s**

1.2 x 73.5 cm. Woven and threaded polychrome beads. Attr. to Vienna.  
**€ 90 - 120**

**1430 Necklace, 1920s**

L. 50 cm (open). White threaded beads, balls embroidered with white and black beads, metal clasp. Attr. to Vienna.  
**€ 100 - 150**

**1431 Tie, 20th century**

L. 132 x 2.1-4 cm. Woven polychrome beads.  
**€ 100 - 150**

**1432 Belt buckle, c. 1920**

H. 6 x 7 cm (each). Steel beads, faceted gemstones and metal on textile, hooks.  
 Image online.  
**€ 30 - 40**

**1433 Necklace, 1920s**

L. 126 cm (open). Crocheted polychrome beads, silver clasp. Clasp marked: 835 (embossed).  
**€ 90 - 120**



#### 1434 Necklace, 1920s

L. 26 cm. Crocheted blue beads, balls embroidered with red beads, brass clasp. Attr. to Vienna.

€ 120 - 160

#### 1435 Decorative collar, 1st half of the 20th century

H. 23 x 20 cm. Polychrome bead embroidery on textile, button. Image online.

€ 40 - 50

#### 1436 Necklace, 20th century

L. 42 cm. Threaded white and black beads, black beads between metal plates.

Image online.

€ 80 - 100

#### 1437 Necklace, 20th century

L. 48 cm (open). Threaded orange beads, yellow polished beads, brass clasp.

Image online.

€ 30 - 40

#### 1438 Necklace, 20th century

L. 48.5 cm (open). Threaded polychrome beads, metal clasp. Image online.

€ 60 - 70

#### 1439 Box with game coins, 19th century

H. 1.8 x 5.8 x 5.5 cm. Bead embroidery on linen canvas, leather, textile lining, ivory game coins (hearts, diamonds, spades, clubs).

Image online.

€ 30 - 40

#### 1440 Game table cover, 19th century

D. 63 cm. Knitted polychrome beads on linen canvas, glued ivory carvings, embroidered textile back.

Some detached ivory carvings and beads enclosed.

€ 180 - 240

#### 1441 Wooden box for card games, 19th century

H. 4.2 x 17.5 x 14.8 cm. Polychrome bead embroidery, mahogany, rosewood veneer, imitation marble, brass hinges, brass lock.

Defective lock.

Image online.

€ 40 - 50

#### 1442 Box with 'Boston Whist' playing cards, 2nd half of the 19th century.

H. 4 x 9 x 12 cm. Polychrome bead embroidery on cardboard, cardboard, brass.

Image online.

€ 40 - 50

#### 1443 Pouch with a deck of cards, 2nd half of the 19th century

H. 12 x 8.5 cm. Knitted polychrome beads, leather lining, crocheted drawstring, four porcelain tokens, glazed and inscribed: Simple., Double., Triple., Quadrouple.

€ 90 - 120







1443

#### 1444 Decorative tray with playing cards, 2nd half of the 19th century

D. 23.5 cm. Polychrome bead embroidery and polychrome embroidery on linen canvas, carved softwood, stained dark.  
Image online.

€ 40 - 50

#### 1445 Purse with playing cards, c. 1900

H. 12.5 x 7.5 cm. Knitted polychrome beads, textile lining, silver bail. Bail marked: Various hallmarks.

Image online.

€ 80 - 100

#### 1446 Embroidery pattern, 19th century

24 x 28.5 cm (frame). Hand-coloured engraving on blue-grey cardboard. Made by Hertz & Wegener, Berlin. Marked: S. Gyllenkrok (handwritten). Glass frame.

Not de-framed.

Image online.

€ 80 - 100

#### 1447 Beaded painting with a bouquet of flowers, 2nd half of the 19th century

23 x 22 cm (frame). Knitted polychrome beads. Glass frame.

Not de-framed.

Image online.

€ 80 - 100

#### 1448 Beaded painting with village scene, 19th century

30.5 x 34.3 cm (frame). Polychrome pearl embroidery on linen canvas. Glass frame.

Not de-framed.

Image online.

€ 80 - 100

#### 1449 Beaded painting with river landscape, 1820

27 x 34 cm (frame). Knitted polychrome beads. Marked: Anne Spies. den 17. Juli 1820 (embroidered).

Not de-framed.

€ 100 - 150

#### 1450 Beaded painting with river landscape, 1873-1875

26.5 x 33.5 cm (frame). Knitted polychrome beads. Glass frame. Local handicraft, Germany.

Not de-framed.

€ 90 - 120

#### 1451 Beaded painting with yellow roses, 19th century

17.5 x 11.6 cm (frame). Polychrome bead embroidery on cardboard.

Not de-framed.

Image online.

€ 70 - 90



1449



1450



1453



1455



1459

#### **1452 Beaded painting with Italian coat of arms, 19th century**

78 x 61.5 cm (frame). Polychrome beadwork and embroidery on textile. Glass frame.

Not de-framed.

[Image online.](#)

€ 80 - 100

#### **1453 Beaded painting with Easter motif, 19th century**

32.4 x 26.4 cm (frame). Polychrome bead embroidery and polychrome embroidery on cardboard. Glass frame.

Not de-framed.

€ 90 - 120

#### **1454 Beaded painting with peacock, 19th century**

24 x 24 cm (frame). Polychrome pearl embroidery on linen canvas. Glass frame.

Not de-framed.

[Image online.](#)

€ 80 - 100

#### **1455 Beaded painting with deer and fawn, 2nd half of the 19th century**

65 cm x 59.5 (frame). Polychrome bead embroidery on linen canvas. Glass frame.

Not de-framed.

€ 90 - 120

#### **1456 Beaded painting with motto, 2nd half of the 19th century**

37.3 x 32.4 cm (frame). Silver-coloured and black beads on cardboard.

Not de-framed.

[Image online.](#)

€ 40 - 50

#### **1457 Beaded painting with a Venetian villa, c. 1900**

33.6 x 41.6 cm (frame). Polychrome pearl embroidery on linen canvas. Glass frame.

Not de-framed.

[Image online.](#)

€ 80 - 100

#### **1458 Beaded painting with forest house, 19th century**

26.5 x 29 cm (frame). Polychrome bead embroidery and polychrome embroidery on cardboard. Glass frame.

Not deframed.

[Image online.](#)

€ 80 - 100

#### **1459 Beaded painting with hiking trail, 19th century**

25 x 30 cm (frame). Polychrome pearl embroidery on linen canvas. Glass frame.

Not de-framed.

€ 90 - 120

#### **1460 Beadwork with landscape, 19th century**

18.5 x 14.5 cm. Polychrome bead embroidery on linen canvas, reverse of silk, wire frame.

[Image online.](#)

€ 80 - 100



**1461 Beadwork with oriental scene,  
2nd half of the 19th century**

8.5 x 9 cm. Polychrome bead embroidery on cotton fabric.  
Motif: Cf. Holm, Glasperlen. Mythos, Schmuck und Spielereien  
aus fünf Jahrtausenden, Munich 1984, p. 110.  
Image online.

€ 40 - 50

**1462 Beadwork with temples and roses, 19th century**

11 x 12.5 cm. Polychrome bead embroidery and polychrome  
embroidery on cardboard.

Image online.

€ 30 - 40

**1463 Three beadworks with a cat, a swan and a dog,  
2nd half of the 19th century**

13.5 x 16 cm; 12.5 x 15.5 cm; 14 x 17 cm. Polychrome bead  
embroidery on textile.

Image online.

€ 30 - 40

**1464 Two beaded paintings with a horse-drawn car-  
riage and a hunting dog with a pheasant, 19th  
century**

11.5 x 16 cm; 11.5 x 16 cm. Polychrome pearl embroidery on  
textile, leather frame, paper back.

Image online.

€ 80 - 100

**1465 Biedermeier hand brush,  
1st half of the 19th century**

H. 7.6 x 28.5 x 4.5 cm. Polychrome bead embroidery on linen  
canvas, rosewood, natural bristles.

Image online.

€ 40 - 50

**1466 Biedermeier case with field maple leaves,  
1st half of the 19th century**

H. 2.5 x 6.5 x 21.5 cm. Bead embroidery on cardboard, velvet  
lining, textile ribbon, leather, clasp with brass hooks.

Image online.

€ 40 - 50

**1467 'Andenken' lighter holder,  
1st half of the 19th century**

H. 7 x 7 cm. Polychrome bead embroidery on linen canvas,  
linen lining, metal.

Clasp defective.

Cf. Holm, Glasperlen. Mythos, Schmuck und Spielereien aus  
fünf Jahrtausenden, Munich 1984, p. 87.

Image online.

€ 40 - 50

**1468 2 Biedermeier cases and 1 notebook,  
1st half of the 19th century.**

Notebook: H. 2 x 15.5 x 10.5 cm. Polychrome bead embroidery  
on linen canvas, leather, pencil, ivory, textile. Glasses case:  
H. 2.5 x 16.8 x 5 cm. Polychrome bead embroidery on textile,  
leather, brass, textile lining. Case: 9 x 15 cm. Polychrome bead  
embroidery on canvas, leather, textile, metal.

Case: lining in need of restoration.

Image online.

€ 80 - 90

**1469 Biedermeier key case, 1st half of the 19th century**

H. 12.5 x 5 cm. Polychrome bead embroidery on linen canvas,  
leather lining, metal clasp.

Image online.

€ 40 - 50

**1470 Case, 1st half of the 19th century**

H. 8.5 x 11 x 4.2 cm. Polychrome bead embroidery and  
embroidery on cardboard, ivory, cardboard, textile, metal.

Image online.

€ 50 - 60

**1471 2 cases and 1 notebook, 1st half of the 19th century**

Case: 16.5 x 8.5 cm. Bead embroidery on linen canvas, leather.

Cigar case: H. 13 x 6.5 x 4.5 cm. Bead embroidery on linen  
canvas, leather.

Notebook: 14 x 10 cm. Bead embroidery on linen canvas,  
textile, leather.

Pages of the notebook missing.

Image online.

€ 50 - 60

**1472 Decorative tray with floral decor, 19th century**

54 x 27 cm. Polychrome bead embroidery on linen canvas,  
walnut veneer.

€ 100 - 150



1472

#### 1473 Prayer book with bead cover, 1843

Polychrome bead embroidery on cardboard. Johann Joseph Natter, Gebet und Erbauungsbuch im Geiste der Religion Jesu, Prague 1843.

[Image online.](#)

€ 60 - 80

#### 1474 Mouthpiece, 2nd half of the 19th century

L. 73 cm. Polychrome bead embroidery on linen canvas, horn, metal, tubular wood.

€ 90 - 120



1474

#### 1475 Baby hat, 19th century

H. 16 x 20.5 cm. Knitted with polychrome beads.

[Image online.](#)

€ 50 - 60

#### 1476 Thimble with container, 19th century

H. 4.5, D. 3.3 cm. Polychrome bead embroidery on wire, ivory.

[Image online.](#)

€ 80 - 90

#### 1477 Yarn box, 19th century

H. 9 cm, D. 7.5 cm. Bead embroidery on cardboard, rosewood, gilded paper, thread outlet made from bone.

[Image online.](#)

€ 40 - 50

#### 1478 3 cases, 19th century

Case with notebook: H. 3 x 14 x 7 cm. Polychrome bead embroidery on linen canvas, textile lining, notebook, pencil, leather, brass.

Case 'Aus Liebe': H. 1.3 x 15 x 8.5 cm. Bead embroidery on cardboard, leather, brass. Floral case: 17 x 10 cm. Polychrome bead embroidery on linen canvas, leather, metal.

[Image online.](#)

€ 40 - 50

#### 1479 Key case '10 Uhr', 19th century

15.5 x 6.5 cm. Embroidered steel beads, polychrome embroidery, leather, textile lining.

[Image online.](#)

€ 50 - 60

#### 1480 Matchbox, 19th century

H. 1.4 x 4.5 x 7.4 cm. Polychrome bead embroidery on linen canvas, leather, cardboard.

[Image online.](#)

€ 30 - 40

#### 1481 Wax stick wick, 19th century

H. 13 x 12.5 x 8.5 cm. Polychrome bead embroidery on linen canvas, brass.

[Image online.](#)

€ 40 - 50

#### 1482 Bead embroidery with grapevine wreath, 19th century

56 x 57.5 cm. Polychrome bead embroidery on linen canvas, cotton.

€ 90 - 120



1482

#### 1483 'Segars' cigar case and notebook, 19th century

Cigar case: H. 1.1 x 8 x 12.6 cm. Polychrome bead embroidery on linen canvas, leather. Notebook: 13 x 9.5 cm. Polychrome bead embroidery on linen canvas, leather, pencil with enamel on guilloché-background and ivory.

[Image online.](#)

€ 70 - 90

#### 1484 2 cases 'Domingo' and 'Fernandez', 19th century

H. 1.5 x 8-8.5 x 13-13.5 cm. Polychrome bead embroidery on linen canvas, straw lining.

[Image online.](#)

€ 50 - 60



**1485 Two wall objects with flower baskets, 19th century**

H. 25 x 10 cm Polychrome bead embroidery on linen canvas, textile.

Image online.

€ 90 - 120

**1486 Book stand with drawer, 1858**

H. 28 x 35 x 32 cm. Polychrome bead embroidery and polychrome embroidery on cardboard, cardboard covered with velvet, cardboard with gold decorations.

€ 150 - 250

**1487 Brush, 19th century**

H. 4 x 4.5 x 11.5 cm. Polychrome bead embroidery on linen canvas, natural bristles, wood covered with leather.

Image online.

€ 40 - 50

**1488 Bottle with stylised flowers and birds, 2nd half of the 19th century**

H. 25 cm. Polychrome bead embroidery on linen canvas, crocheted polychrome beads, glass, cork.

€ 90 - 120



1488



1490



1486



1492

**1489 Handle with garlands of flowers, 19th century**

11.5 x 11.5 cm. Crocheted polychrome beads, metal clasp.

Image online.

€ 40 - 50

**1490 Coffee hat, 2nd half of the 19th century**

H. 28.5 x 37.5 x 8.5 cm. Polychrome bead embroidery on linen canvas, textile lining, reinforced.

Lining in need of restoration.

Cf. Holm, Glasperlen. Mythos, Schmuck und Spielereien aus fünf Jahrtausenden, Munich 1984, p. 133.

€ 100 - 150

**1491 Candle screen with travelling artist, 2nd half of the 19th century.**

H. 43 x 21.5 x 15.5 cm. Woven polychrome beads under glass, lacquered wood with relief decoration.

Image online.

€ 80 - 90

**1492 Portfolio 'Kathi Riedl, 5 November 1874', 1874**

26.5 x 31.5 cm. Bead embroidery and polychrome embroidery on cardboard, textile, note sheets, brass, leather.

Lock defective.

€ 90 - 120

**1493 Small tin 'Don D'amitié', 19th century**

H. 3.6 cm, D. 6.5 cm. Polychrome bead embroidery on wire, horn.

[Image online.](#)

€ 40 - 50

**1494 Document folder, 2nd half of the 19th century**

40 x 34.5 cm. Polychrome bead embroidery on linen canvas, leather with gilt edge, cardboard, cords.

[Image online.](#)

€ 80 - 100

**1495 Hair container, 19th century**

H. 19 x 12 cm. Polychrome bead embroidery on linen canvas, cotton cover, cord, metal hook.

Cf. Holm, Glasperlen. Mythos, Schmuck und Spielereien aus fünf Jahrtausenden, Munich 1984, p. 120.

[Image online.](#)

€ 50 - 60

**1496 Wooden bowl, 19th century**

H. 9 cm. Black and white bead embroidery on textile ribbon, beech stained on ebony.

[Image online.](#)

€ 30 - 40

**1497 Child's suspenders, 2nd half of the 19th century**

50.5 x 2.3 cm. Polychrome bead embroidery on linen canvas, leather, metal.

[Image online.](#)

€ 10 - 20

**1498 Bell pull, 2nd half of the 19th century**

216 x 9.7 cm. Clear glass bead embroidery, polychrome embroidery, clear glass, brass, textile.

Cf. Holm, Glasperlen. Mythos, Schmuck und Spielereien aus fünf Jahrtausenden, Munich 1984, S. 134f.

[Image online.](#)

€ 80 - 100

**1499 Needle case, 19th century**

H. 9 cm. Polychrome bead embroidery on wire, bone.

[Image online.](#)

€ 40 - 50

**1500 Needle case, 19th century**

H. 11.5 cm. Polychrome beads in sable technique, cardboard.

[Image online.](#)

€ 50 - 60



1501

**1501 Bead snake, 2nd half of the 19th century**

L. 62 cm, D. 1.7 cm. Crocheted polychrome beads, textile.

€ 90 - 120

**1502 Beaded doily, 19th century**

H. 1.5 x 26.5 x 29.5 cm. Polychrome bead embroidery on linen canvas, textile, reinforced.

[Image online.](#)

€ 70 - 90

**1503 Champagne tumbler, 19th century**

H. 9.5 cm. Pink glass with applied beads, gold painting. Made by Fritz Heckert, Petersdorf. Marked: FH 4500 369 g P.

[Image online.](#)

€ 70 - 80

**1504 Napkin ring 'Bon Appetit', 19. Jh.**

H. 5.3 cm. Polychrome bead embroidery on linen canvas, textile lining.

[Image online.](#)

€ 40 - 50

**1505 2 napkin rings with bird motifs, 19th century**

H. 6 cm, D. 7 cm. Polychrome bead embroidery on linen canvas, brass, cardboard.

One napkin damaged.

[Image online.](#)

€ 30 - 40



**1506 Arm warmers with floral motif, 19th century**

34 x 9 cm. Knitted polychrome beads.

[Image online.](#)

€ 30 - 40

**1507 Pendant with geometric patterns, c. 1900**

H. 6,5 x 5 cm. Polychrome bead embroidery, brass ring.

[Image online.](#)

€ 10 - 20

**1508 Spray of flowers, c. 1900**

H. 13,5-17,5 cm. Hand-beaten glass beads on wire, metal, paper.

[Image online.](#)

€ 10 - 20

**1509 Small tin, c. 1900**

H. 2.3 cm, Ø 5.7 cm. Polychrome bead embroidery on wire, plastic.

[Image online.](#)

€ 40 - 50

**1510 Beaded fabric with flowers, c. 1900**

H. 56 x 17 cm. Woven with polychrome beads.

[Image online.](#)

€ 50 - 60

**1511 Napkin ring, c. 1900**

H. 8.5 x 9 cm. Crocheted polychrome beads.

Holm, Glasperlen. Mythos, Schmuck und Spielereien aus fünf Jahrtausenden, Munich 1984, p. 119.

[Image online.](#)

€ 50 - 60

**1512 Clay pot 'Souvenir de Vichy', um 1900**

H. 7.5 cm, D. 8 cm. Beadwork on wire, clay.

[Image online.](#)

€ 40 - 50

**1513 Belt with leaf decoration, 19th century**

104.5 x 2.5 cm. Polychrome bead embroidery on linen canvas, leather, brass clasp.

[Image online.](#)

€ 50 - 60



1515

**1514 2 cases, 19th century**

Cigar case: H. 2.2 x 14.3 x 9 cm. Polychrome bead beadwork and embroidery on cardboard, leather. Cigar enclosed.

Case: H. 14.8 x 7 x 5.4 cm. Polychrome bead embroidery on linen canvas, cardboard, metal.

[Image online.](#)

€ 30 - 40

**1515 Pair of Pumps, c. 1960**

H. 12 x 8.5 x 23 cm. White bead embroidery and polychrome embroidery on textile, leather. Made by Mayer, Hong Kong. Marked: Mayer Hong Kong, Handmade.

€ 90 - 120

**1516 Fireplace screen, 19th century**

H. 125 x 81 x 45 cm. Polychrome bead embroidery and polychrome embroidery on linen canvas under glass, stained walnut and mahogany.

€ 200 - 300



1516





# IMPRESS

## MANAGING DIRECTOR AND AUCTIONEER:

Askan Quittenbaum  
+49 89 273702-113  
a.quittenbaum@quittenbaum.de

## DEPUTY MANAGING DIRECTOR:

Dr. Claudia Quittenbaum  
+49 89 273702-111  
c.quittenbaum@quittenbaum.de

## SPECIALISTS:

Askan Quittenbaum  
+49 89 273702-113  
a.quittenbaum@quittenbaum.de

Eva Stangassinger B.A.  
+49 89 273702-10  
e.stangassinger@quittenbaum.de

## ASSISTANCE:

Carina Schlager B.A.

## BOOK KEEPING:

Alicja Wika  
+49 89 273702-117  
alicja.wika@quittenbaum.de

## CATALOGUE ORDER:

Annette Ehrenhardt  
+49 89 273702-120  
buchhaltung@quittenbaum.de

## LOGISTICS AND SHIPPING:

Dirk Driemeyer  
+49 89 273702-112  
dirk.driemeyer@quittenbaum.de

M2 Logistik  
+49 8121 223015  
service@m2logistik.de

## PHOTOGRAPHS:

Stefan Musche  
Jochen Splett

## DESIGN:

Daniela Paringer,  
design & print GbR

## PRODUCTION AND PRINTING:

G. Peschke Druckerei GmbH,  
München









QUITTENBAUM  
Kunstauktionen München

QUITTENBAUM Kunstauktionen GmbH

Theresienstrasse 60 • D-80333 Munich

Phone 089-27 37 02 10 • Fax 089-27 37 02 122

info@quittenbaum.de • www.quittenbaum.de