

BAUHAUS 102

Auction 157 A
29 June 2021





BAUHAUS 102

GERMAN DESIGN

AUCTION 157 A

THURSDAY, 29 JUNE 2021

3:00 PM

PREVIEW:
THERESIENSTR. 60

| | | |
|----------|--------|--------------|
| Thursday | 24.06. | 10 am - 6 pm |
| Friday | 25.06. | 10 am - 6 pm |
| Saturday | 26.06. | 1 pm - 5 pm |
| Sunday | 27.06. | 1 pm - 5 pm |
| Monday | 28.06. | 10 am - 6 pm |
| Tuesday | 29.06. | 10 am - 3 pm |

QUITTENBAUM
Kunstauktionen GmbH

Managing director: Askan Quittenbaum
Theresienstrasse 60 · D-80333 Munich
Tel. (+49) 89-27 37 02 10
Fax (+49) 89-27 37 02 122
E-Mail info@quittenbaum.de
Öffnungszeiten: Tuesday - Friday
3 pm - 6 pm
By appointment



Mitglied der Initiative
Datenbank
kritischer Werke



Bundesverband Deutscher Kunstversteigerer e.V.





1

HIN BREDENDIECK
'694' PENDANT LIGHT, C. 1929

H. 72 cm (with suspension), D. 33 cm. Made by Körting & Mathiesen A.-G., Leipzig-Leutzsch. Tubular metal, sheet metal, chrome-plated, white glass.
Marked: manufacturer's stamp.

Cf. Binroth et al., *Bauhausleuchten? Kandemlicht!*, Leipzig 2002, p. 99.

€ 1.000 - 1.200



2

MARCEL BREUER
'B 6' (VARIATION) CHAIR, 1925/26

H. 87 x 45 x 44.5 cm. Made by Standard-Möbel, Berlin (attr.). Tubular steel, chrome-plated, plugged, wood / plywood seat, black frame, screwed, bracket fastened with hexagonal screws.
Cf. Droste / Ludewig, *Marcel Breuer Design*, Cologne 1992, p. 69.

€ 1.800 - 2.200

3

MARCEL BREUER
'B 35' ARMCHAIR, C. 1928/29

H. 83 x 58.5 x 80 cm; tube D. 2.0-2.5 cm. Made by Thonet, Frankenberg. Tubular steel, chrome-plated, red iron yarn, wood, painted red.

Wilk, *Marcel Breuer Furniture and Interiors*, New York 1981, p. 82.

€ 2.200 - 3.000





4

**ERICH DIECKMANN
CHAIR C. 1926**

H. 80 x 42 x 51.5 cm. Made at Bauhochschule Weimar (attr.).
Elmwood, stained dark, wickerwork.

Cat. Erich Dieckmann, Möbelbau, Stuttgart 1931,
reprint Weil/Rhine 1990, pp. 42-45, no. 57;
Vegesack (ed.), Erich Dieckmann,
Praktiker der Avantgarde, Weil/Rhine 1990, p. 84.

€ 1.000 - 1.500 *

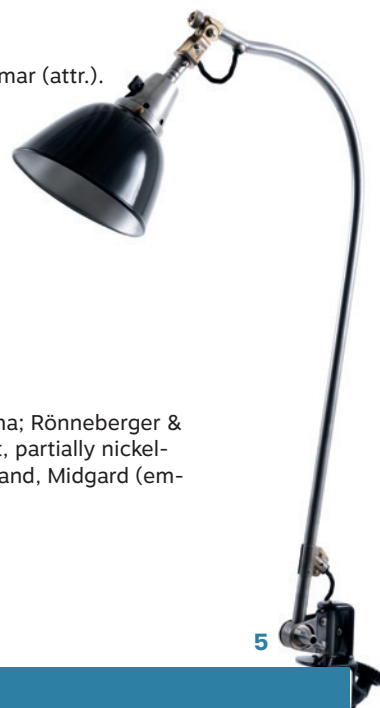
5

**CURT FISCHER
'113' TASK LIGHT, C. 1926**

H. 84 cm, D. 16.5 cm. Made by Industrierwerke Auma; Rönneberger &
Fischer. Tubular steel, sheet steel, aluminium sheet, partially nickel-
plated, painted black. Marked: DRGM, workshop brand, Midgard (em-
bossed).

Restored true to the original.

€ 1.800 - 2.200



5

6

**CURT FISCHER
'MIDGARD' - 'DOUBLE TABLE ARM
SIZE II' CLAMP LIGHT, C. 1926**

H. 100 cm (max.), D. 17 cm. Made by
Industrierwerke Auma; Rönneberger &
Fischer. Tubular steel, sheet steel, sheet
aluminium, partially nickel-plated, painted
black; tubular metal. Marked: Midgard,
D.R.G.M. Pat. Pend.

Restored true to the original.

€ 1.800 - 2.200

7

**FR. SCHÄFER, STUHL- UND
MÖBELFABRIK, TÜBINGEN
8 'TÜBINGEN' CHAIRS, 1928**

H. 89 x 40.5 x 54 cm. Beech wood, ash
wood. Marked: Some with remnants of
the manufacturer's label and stamp:
1928.

Cf. Glenewinkel, Der Heimberater, Leipzig
1937, p. 33, p. 126.

€ 900 - 1.200

8

**ADOLF G. SCHNECK
2 'TÜBINGEN' CHAIRS, C. 1934**

H. 83 x 40.5 x 51 cm. Made by Schä-
fer, Tübingen. Natural ash. Marked:
manufacturer's label Schneck-Stuhl.

Schneck, Der Stuhl, Stuttgart 1937,
pp. 11ff.; Glenewinkel, Der Heimberater,
Leipzig 1937, p. 33.

Image online.

€ 200 - 300





9

**HIN BREDENDIECK
'409B' PENDANT LIGHT, C. 1929**

H. 72 cm (with suspension), D. 33 cm. Made by Körting & Mathiesen A.-G., Leipzig-Leutzsch. Tubular metal, sheet metal, chrome-plated, white glass. Marked: manufacturer's stamp.

Cf. Binroth et al., Bauhausleuchten? Kandemlicht!, Leipzig 2002, p. 97.

€ 900 - 1.200

10

**GERMANY
CHAIR, 1920S**

H. 84 x 49 x 45.5 cm. Oak wood, textile cover, golden yellow.

Image online.

€ 700 - 800



11

**DEUTSCHE WERKSTÄTTEN, DRESDEN-HELLERAU
(ATTR.)
SMOKING / READING TABLE, 1930S**

H. 61 x 52 x 52 cm. Fruit wood, block board with fruit wood veneer.

Staggered legs.

€ 600 - 700







12

**FRANZ SINGER; FRIEDL DICKER
SOFA, 1920S**

H. 74 x 176 x 67 cm. Wood, stained dark, partially rose-coloured, red and white, original textile.

Provenance: Studio Friedl Dicker, Franz Singer, Dr. Hugo and Margit Tery-Buschmann, art trade, Berlin.

€ 18.000 - 22.000

The chess set by Josef Hartwig is one of the most successful products designed at the Weimar Bauhaus. In 1922, the graduate of the Munich Academy, who worked from 1921 to 1925 as a foreman in the workshop for wood and sculpture at the Weimar Bauhaus, began to design a chess set that differs fundamentally from traditional forms. Hartwig designed the tokens from simple stereometric shapes, from cubes, cylinders and spheres. Initially, the figures were handcrafted, but the goal was industrial production. Hartwig himself explained the genesis of the forms in 1924: "Pawn and rook move at right angles to the edge of the board: expressed by the cube. The knight moves at right angles in a hook shape on four fields: four cubes combined at right angles. The bishop moves diagonally to the edge of the board: a cross cut from the cube. The king moves at right angles and diagonally: a small cube across a corner on a larger one. The queen, the most agile figure, consists of a cylinder and a ball."

(The Bauhaus chess game by Josef Hartwig, p. 7)



13

JOSEF HARTWIG
BAUHAUS CHESS SET 'XVI', 1924

32 tokens. H. 2-4.7 cm. Made by Bauhaus Weimar, after 1926. Maple wood, partially painted black.

In the original box. H. 6.1 x 13.4 x 13.7 cm. Marked: HARTWIG BAUHAUS DESSAU GES.GESCH.

Bauhaus-Archiv Berlin Das Bauhaus-Schachspiel von Josef Hartwig, Berlin 2006, p. 19; Hahn, Experiment Bauhaus, Dessau 1988, p. 401; Bauhaus-Archiv, coll. cat., Berlin 1987, pp. 149-50, no. 288; Exh. cat. Bauhaus 7, Galerie am Sachsenplatz, Leipzig 1991, fig. p. 43, no. 134.

€ 9.000 - 12.000

14

**MARCEL BREUER
'B 22' SHELF, 1928**

H. 75 x 85 x 30.5 cm, tube D. 2.0 cm. Made by Thonet, Frankenberg, before 1935. Tubular steel, chrome-plated, wood, painted black.

Cf. Vegesack, Deutsche Stahlrohrmöbel, Munich 1986, p. 134; cf. Thonet catalogue, c. 1935, p. 29.

€ 5.000 - 6.000



During his time in Frankfurt, Dell was able to make a name for himself primarily with the design of lights. The 'Rondella' series was one of his most famous works. Typical for Dell were lighting designs whose lampshades were parabolic in shape with a cylindrical end and angled at the bottom.

15

**CHRISTIAN DELL
SMALL 'RONDELLA' TABLE LIGHT, 1927/28**

H. 40 cm (max.), Ø base plate: 16.2 cm; Ø tube of the stand: 12 mm; D. 'L-pipe': 10.5 mm; shade: 14 x 12.7 cm. Made by Rondella Beleuchtungskörperfabrik GmbH, Oberursel, 1928-31. Tube of the stand and lamp arm: nickel-plated tubular brass; Reflector and cover of the base: sheet brass, copper-plated; Tube end, adjusting screw: metal, nickel-plated or copper-plated. Porcelain rotary switch. Base: metal plate, blackened.

Exh. cat. Die Metallwerkstatt am Bauhaus, Berlin 1992, p. 201; Amt für industrielle Formgestaltung, Neues Bauen Neues Gestalten, Das Neue Frankfurt, Dresden 1984, p. 193.

€ 3.800 - 4.500

16

WOLFGANG TÜMPER (STYLE)
PENDANT LIGHT, C. 1927

H. 69 cm, D. 27 cm. Made by Goldschmidt & Schwabe, Berlin (attr.). Sheet metal, tubular metal, chrome-plated, white glass.

Cf. exh. cat. Die Metallwerkstatt am Bauhaus, Berlin 1992, p. 72, ill. no. 96; Schneider, Burg Giebichenstein, Weinheim 1992, p. 273, no. 193.1.

Image online.

€ 350 - 400

17

MARCEL BREUER
'B3' - 'WASSILY' LOUNGE CHAIR, 1925

H. 73.5 x 79 x 68 cm. Made by Gavina, Milan. Chrome-plated tubular steel, black leather. Marked: Manufacturer's label.

Wilk, Marcel Breuer Furniture and interiors, New York 1981, pp. 38f.; Van Geest / Mačel, Stühle aus Stahl, Cologne 1980, pp. 16ff.

Image online.

€ 500 - 700

18

LUDWIG MIES VAN DER ROHE
'MR 10' - 'WEISSENHOF' CHAIR, 1927

H. 80 x 48.5 x 72.5 cm. Tube D. 2.5 cm. Made by Josef Müller, Berlin or Bamberg Metallwerkstätten, Berlin. Nickel-plated tubular steel, plugged and screwed, cane work.

Meshwork fragile in places.

Exh. cat. Mies van der Rohe, Vitra-Museum, Weil/Rhine 1998, p. 30f., p. 36, p. 85; Vegesack, Deutsche Stahlrohrmöbel, Munich 1986, p. 106.

€ 2.000 - 3.000



19

MARCEL BREUER
12 'B 33' CHAIRS, 1927/28

H. 84.5 x 50 x 68 cm; Tube: Ø 2.4 cm. Made by Thonet, Frankenberg, 1930s. Tubular steel, chrome-plated, plugged, brown leather; two spreader bars with screw mechanism.

Dröste / Ludewig, Marcel Breuer, Berlin 1992, p. 90, no. 27.

€ 3.000 - 4.000





20

GERMANY

6 CEILING LIGHTS, 1930S

H. 110 cm, D. 27 cm. Tubular metal, sheet metal, nickel-plated, white glass.

€ 1.500 - 1.800

21

MARCEL BREUER (ATTR.)

CANTILEVER CHAIR, C. 1928

H. 86 x 47.5 x 65 cm; Tube Ø 2.5 cm. Made by Thonet, Frankenberg. Steel tube, nickel-plated, plugged, canework, one bracket. Braid of the seat broken at the side; with residue of glue.

Cf. Mačel, 2100 metal tubular chairs, Amsterdam 2006, p. 23.

€ 900 - 1.200

22

MARCEL BREUER

'B 33' CHAIR (VARIATION), 1927/1928

H. 85 x 44.5 x 59.5 cm; Tube D. 2.4 cm. Made by Bigler, Spichiger und Cie. AG (BIGLA), Bern, early 1930s (attr.). Tubular steel, plugged in, nickel-plated, two brackets, iron thread, brown.

Cf. Droste / Ludewig, Marcel Breuer Design, Cologne 1992, p. 91; cf. Mačel, 2100 metal tubular chairs, Amsterdam 2006, p. 31.

€ 2.200 - 3.000



As early as 1922, while still a student, Breuer worked on the first version of the slatted chair, probably inspired by Rietveld's zigzag chair from 1918 and other furniture designs by the De Stijl movement. With the simplest means (wooden slats, joined together vertically on a square floor plan and covered with strips of fabric), he creates a piece of furniture that is both light and stable and meets ergonomic needs.

The chair is described in "Neue Arbeit der Bauhauswerkstätten", 1925, p. 29: "The elastic and sloping seat supports the entire thigh. The back is thus also held angular and elastic, with two straps that only hold the shoulder blades and lower back - thus, the flat parts of the back, but let the sensitive backbone free." Neue Arbeiten der Bauhauswerkstätten, reprint 1981, p. 28f.

"From the summer of 1924 to March 1925 alone, 262 children's chairs and 32 children's tables were produced. In the same period, 26 slatted chairs were produced." (Droste / Ludewig, Marcel Breuer Design, Cologne 1992, p. 11).



23

MARCEL BREUER
'TI 1A' WOODEN-SLAT CHAIR, 1924

H. 92.2 x 56.1 x 58.4 cm; Slats: 2.5 x 5.4 cm; Square edge: 3.9 x 4 cm. Made at Bauhaus Weimar, 1924/25. Cherry wood slats, grey textile cover. Marked: 2 labels: property R. Probst, 5.

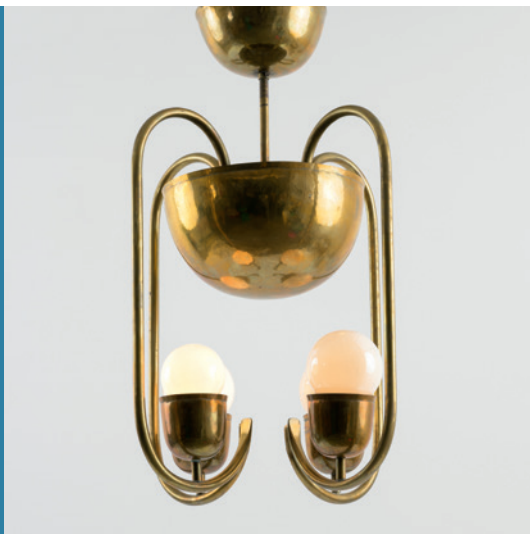
First version with legs made of square-edged wood.

Droste / Ludewig, Marcel Breuer Design, Cologne 1992, p. 6-8, p. 35, p. 46/47; Bauhaus-Archiv Museum für Gestaltung coll. cat., Berlin 1987, p. 90 (text).

Provenance: Dresden art trade, before that private collection Dresden (estate of an elderly lady), before that Rudolf Probst (labels on the underside of the chair).

€ 40.000 - 60.000





24

**HAYNO FOCKEN
CEILING LIGHT, C. 1930**

H. 65 cm, D. 44.5 cm. Tubular brass, sheet brass. Marked: workshop signet (embossed).

€ 12.000 - 15.000

Hayno Focken's ceiling light is impressive with its combination of traditional craftsmanship and modern clarity. The silversmith and metalworker became known primarily through the manufacture of articles of daily use such as bowls and jugs. This design thus is a special feature of his oeuvre.

His studies at the art academy in Berlin, which he began in 1924, were an exciting stage in his career, especially with regard to the later manufacture of the ceiling light. Focken simultaneously worked

at Max Krüger's lighting factory, where Karl Raichle had already started his career before him.

Despite the singularity of a lighting design within Focken's work, the material used for it establishes the connection to his other work. Brass plays a key role not only in this, but in a large number of the silversmiths' designs.





25

**SIS-LICHT, SCHWEINFURT
3 'NO. 72' TASK LIGHTS, 1924**

L. 113 cm, D. 15.5 x 16.7 cm. Tubular metal, sheet aluminium, painted in shades of grey. Marked: SIS, 66.

€ 600 - 800

26

**DEUTSCHE WERKSTÄTTEN, DRESDEN-HELLERAU
(ATTR.)
SMOKING / READING TABLE, 1930S**

H. 60.5 cm, D. 71 cm. Oak wood, blockboard with oak veneer.

€ 800 - 900



27

**MARIANNE BRANDT; HIN BREDENDIECK
BEDSIDE TABLE LIGHT, 1928/29**

H. 24.5 cm. Made by Körting & Mathiesen A.-G., Leipzig-Leutzsch. Sheet metal, tubular metal, painted white resp. aluminium matt inside, nickel-plated screw. Marked: manufacturer's badge.

Exh. cat. Bauhausleuchten? Kandemlicht!, Stuttgart 2002, p. 107.

€ 1.200 - 1.500

28

**LUDWIG MIES VAN DER ROHE
'BARCELONA CHAIR' WITH OTTOMAN, 1929**

Lounge chair: H. 77 x 74 x 77.5 cm; Ottoman: H. 37.5 x 58 x 62 cm.
Made by Knoll International, New York. Sectional steel, chrome-plated,
leather, brown.

Reuter, Mies und das Neue Wohnen, Ostfildern 2008, pp. 144ff., 184ff.

€ 2.500 - 3.000



29

**LUDWIG MIES VAN DER ROHE; LILLY REICH
'BARCELONA' DAYBED, 1930**

H. 39 x 102 x 202 cm. Made by Knoll International (attr.).
Tubular steel, chrome-plated, walnut, black leather, black
leather straps.

Exh. cat. Ludwig Mies van der Rohe, Vitra Design Museum,
Weil/Rhine 1998, p. 119; Reuter, Mies und das neue Wohn-
en, Ostfildern 2008, p. 194.

€ 2.200 - 3.000



30

**HEINRICH SIEGFRIED BORMANN
'624' PENDANT LIGHT, C. 1939**

H. 66 cm (with suspension), D. 40 cm. Made by Körting &
Mathiesen A.-G., Leipzig-Leutzsch. Sheet metal, tubu-
lar metal, nickel-plated, glass, white and opaque white.
Marked: manufacturer's stamp.

Cf. Binroth et al., Bauhausleuchten? Kandemlicht!, Leipzig
2002, p. 101.

€ 1.200 - 1.500





31

**MAUSER-WERKE, WALDECK
'RB 4' ARMCHAIR, C. 1939**

H. 85.5 x 53.5 x 52 cm. Chrome-plated tubular steel, wood, plywood, painted black.

Vege sack, Deutsche Stahlrohrmöbel, Munich 1986, p. 140.

Image online.

€ 200 - 250

32

**MARCEL BREUER
'B 65' (VARIATION) WRITING
DESK, 1929/30**

H. 75 x 141.5 x 73 cm. Made by Thonet, Frankenberg (attr.). Chrome-plated tubular steel, sheet steel; wooden construction, blockboard, plywood, painted black. Cf. Vege sack, Deutsche Stahlrohrmöbel, Munich 1986, p. 119.

€ 2.000 - 3.000



33

**WASSILI AND HANS LUCKHARDT
2 'S 36 P' ARMCHAIRS, 1930/31**

H. 90 x 53 x 60 cm. Made by Thonet, Frankenberg, 1990s. Leather, black, tubular metal, chrome-plated, metal rings. Marked: manufacturer's label THONET GERMANY.

Cf. Vege sack, Deutsche Stahlrohrmöbel, Munich 1986, p. 163.

€ 800 - 900



34

**BÜNTE & REMMLER, FRANKFURT/MAIN
'GOETHE' TABLE LIGHT, C. 1930**

H. 44 cm, D. 16 cm. Tubular metal, nickel-plated, sheet aluminium, painted black or aluminium-matt, sheet metal, painted dark brown.

€ 850 - 1.000

35

**GERMANY
CONSOLE TABLE, 1930S**

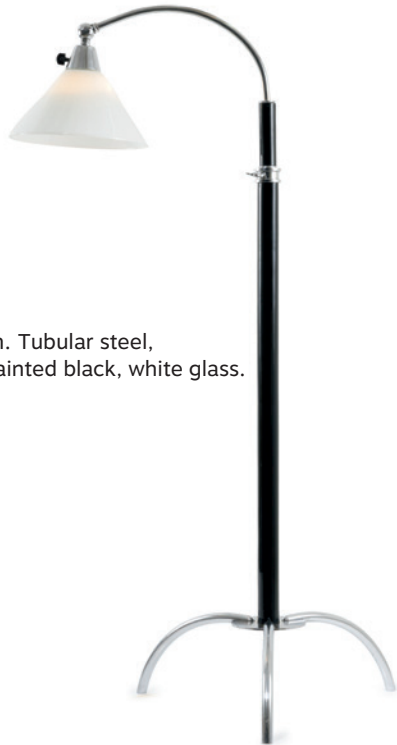
H. 72.5 x 80 x 40 cm; Tube Ø 2.0 cm. Tubular steel, chrome-plated, wooden box construction; Blockboard with oak veneer.
€ 1.200 - 1.800



36

**GERMANY
FLOORLAMP, 1930S**

H. 127-197 cm, D. 25 cm. Tubular steel, chrome-plated, wood, painted black, white glass.
€ 800 - 900



37

**FRIEDRICH HIRZ
TEA TABLE, 1935**

H. 62 cm, D. 90 cm. Walnut, burl veneer.
According to the consignor, this is supposed to be Friedrich Hirz's journeyman piece; In the catalogue, the design date is given as 1935, but according to the consignor, the table was built in the early 1920s already.
Cat. Friedrich Hirz 1907-1987, n.p., 1990, n.p.
€ 1.000 - 1.500



38

**PETER KELER
SMALL SHELF, 1930S**

H. 80 x 49 x 30 cm. Wooden slats, painted red.
From the estate of Peter Keler, which was purchased by a Munich-based antique dealer a few years ago.
€ 600 - 800



39

**ERICH DIECKMANN (STYLE)
WICKER ARMCHAIR, 1930S**

H. 77.5 x 58 x 79.5 cm. Bamboo cane, rattan weave.
Image online.
€ 500 - 700



40

**ERICH DIECKMANN
KITCHEN CABINET FROM THE TYPE FURNITURE SERIES, 1928**

H. 190 x 200 x 55 cm. Made at Bauhochschule Weimar. Wooden box construction, soft wood, plywood, crème-white and grey, linoleum, black; included: six aluminium containers by Haarer. Marked: the initials WA carved on the top of the kitchen cupboard.

Kitchen centre cupboard with side broom cupboard and side pot cupboard. Provenance: Household Else Wagenfeld, art trade, Berlin.

Vege sack (ed.), Erich Dieckmann, Praktiker der Avantgarde, Weil am Rhein 1990, p. 111f.

€ 22.000 - 30.000







41

GERMANY

SMALL SHELF / CABINET, 1932

H. 90 x 80 x 35 cm; Tube Ø 2.2 cm. Tubular steel, chrome-plated, wooden box construction, blockboard with walnut veneer.

€ 1.500 - 2.000

42

HANS HARTL (ATTR.)

CHAIR, C. 1934/35

H. 91.5 x 50.5 x 56 cm. Made by Deutsche Werkstätten, Dresden-Hellerau (attr.). Walnut, wickerwork.

Cf. Arnold, Vom Sofakissen zum Städtebau, Dresden, Basel 1993, p. 229; Deutsche Werkstätten Möbel cat. 1938, pp. 48f.

Image online.

€ 600 - 700

43

MAUSER-WERKE, WALDECK

STOOL, C. 1935

H. 43 x 42 x 46 cm. Tubular steel, chrome-plated, plywood, painted black.

Vegesack, Deutsche Stahlrohrmöbel, Munich 1986, p. 150.

Image online.

€ 400 - 500



44

OTTO MÜLLER

'SISTRAS D4' CEILING LIGHT, 1931

H. 69 cm (with suspension), D. 40 cm. Made by Sistras-Licht GmbH, Karlsruhe. Tubular brass, sheet brass, nickel-plated, glass, colourless, white and opaque red.

Cf. Fiell, 1000 Lights, vol. 1, Cologne 2005, pp. 319ff.; Exh. cat. Die Metallwerkstatt am Bauhaus, Bauhaus-Archiv, Berlin 1992, p. 102.

€ 1.500 - 1.800

45

MARIANNE BRANDT

2 'TASTLICHT' TABLE LIGHTS, C. 1934

H. 24-24.5 cm. Made by Ruppelwerk, Gotha. Sheet metal, partially painted beige, tubular metal, chrome-plated, glass lampshades, yellowish beige. Marked: manufacturer's mark, TAST-LICHT, remnants of manufacturer's marks.

Cf. Exh. cat. Die Metallwerkstatt am Bauhaus, Bauhaus-Archiv, Berlin 1992, p. 53.

€ 1.000 - 1.200





48

**GERMANY
2 CEILING LIGHTS, 1930S**

H. 170 cm, D. 110 cm. Tubular brass, sheet brass.

€ 3.000 - 4.000



46

**THONET, FRANKENBERG
'B 176' SIDE TABLE, C. 1935**

H. 62.5 cm, D. 70 cm. Tubular metal, nickel-plated, block-board, painted black.

Thonet cat. c. 1935, p. 42.

€ 900 - 1.200

47

**CHRISTIAN DELL
'6651' TABLE LIGHT, C. 1935**

H. 53 cm, D. 30 cm. Made by Kaiser & Co., Neheim-Hüsten. Sheet metal, painted black, partially enamelled, tubular brass, chrome-plated. Marked: Manufacturer's stamp.

€ 1.600 - 2.000





49

WALTER GROPIUS
5 PAIRS OF DOOR HANDLES, 1923

L. 11 cm. Made by Wilhelm Engstfeld, Heiligenhaus, for S.A. Loevy, Berlin. Nickel-plated brass.

With 10 bezels and 10 rosettes.

Gronert, *Türdrücker der Moderne*, Cologne 1991, p. 21.

€ 500 - 700

50

WALTER GROPIUS
4 PAIRS OF DOOR HANDLES, 1923

L. 11.2 cm. Made by Wilhelm Engstfeld, Heiligenhaus, for SA Loevy, Berlin. White bronze.

With eight bezels and eight rosettes.

Cf. Gronert, *Türdrücker der Moderne*, Brakel 1991, p. 21.

€ 450 - 500

51

CHRISTIAN DELL
3 TEA INFUSERS, 1924

L. 13.1 cm. Made at the metal workshop of Bauhaus Weimar. Silver-plated brass.

Exh. cat. *Die Metallwerkstatt am Bauhaus*, Bauhaus-Archiv, Berlin 1992, p. 194.

€ 500 - 600



52

EVA VON STÖSSEL
TRAY, C. 1925

34.6 x 24.3 cm. Brass, hammered, chased and punched. Marked: workshop signet, 830, 49 (embossed).

Eva von Stössel worked as a metal smith for the Deutsche Werkstätten in Hellerau and was a member of the German Werkbund. From 1922 until his escape from the National Socialists, she was married to Georg von Mendelssohn. Her works can be found at Kunstgewerbemuseum Dresden, among others.

€ 350 - 400



53

**HAYNO FOCKEN
BOX, C. 1930**

H. 18 cm. Brass, hammered. Marked: workshop signet.
€ 750 - 850

54

**HEINRICH MÖLLER
2 TABLE CLOCKS, C. 1935**

H. 25 cm, D. 21-22.5 cm. Made by Kienzle, Schwenningen. Sheet brass, partially painted black or beige, cast brass, plastic, glass, colourless and violet, bronze base. Marked: Kienzle.
€ 1.000 - 1.200





55

**WILHELM WAGENFELD
'PARIS' VASE, 1936**

H. 31 cm. Made by Vereinigte Lausitzer Glaswerke, Weisswasser. Blue glass.

Manske / Scholz (eds.), *Täglich in der Hand*, Bremen 1998, p. 312, no. 149.

€ 350 - 400

56

**HANS FINSLER
PHOTOGRAPH 'EIER IM SPIEGEL II', 1929**

33 x 25 cm. Black and white gelatin silver print on paper. Inscribed on the reverse: Hans Finsler (1891-1972) einmalige Auflage für die griffelkunst 2003, 312 A4 Hergestellt vom Originalnegativ aus der Sammlung Photographie der Staatlichen Galerie Moritzburg Halle, Hans-Finsler-Nachlass. Bildrechte: Staatliche Galerie Moritzburg Halle. In a passe-partout, glass frame.

€ 200 - 300

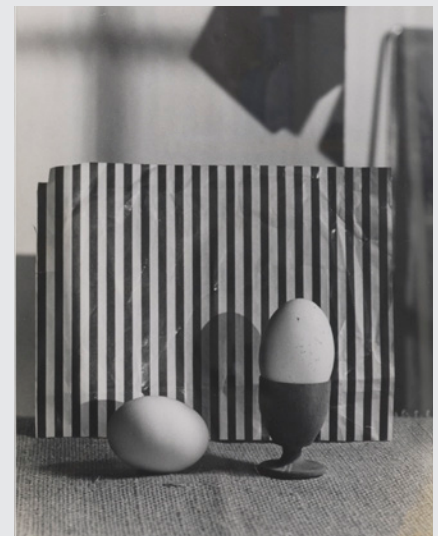


57

**BAUHAUS
2 PHOTOGRAPHS 'CHICKEN' AND
'EGGS', 1929-33**

39.8 x 30 cm. Black and white gelatin silver print on Agfa paper. Not signed. Behind passe-partout, glass frame.

€ 800 - 900



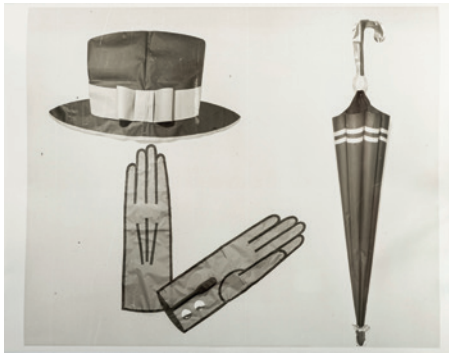


58

**BAUHAUS
4 PHOTOGRAPHS, C. 1930**

17.9 x 24 cm. Gelatin silver print, high-gloss, on baryta. Not sign.

€ 500 - 600



59

**AEG, BERLIN
AEG-PREISLISTE, 1929**

AEG Büro Stuttgart, AEG Preisliste Auszug aus den Spezialisten Oktober 1929, Stuttgart 1929.

€ 120 - 150



60

**SCHÜNKE-FIETZE
'DOBÜBA' POSTER, 1938**

119.7 x 84 cm. Colour lithograph on paper. Marked: dobüba ROSENMONTAGS-KOSTÜMFEST 20.2. AUF DER HOHENSYBURG. schünke-fietze, Druck: W. Crüwell Dortmund Entwurf ges. gesch.

€ 150 - 300

61

OTTO LINDIG
SMALL JUG, 1920-25

H. 6.6 cm. Made by Majolica factory Karlsruhe. Majolica, glazed alkali white. Marked: Manufacturer's mark, 4004, GERMANY.

Snout chipped in 2 places.

Exh. cat. Karlsruher Majolika, Badisches Landesmuseum Karlsruhe 1979, pp. 256f., no. 358.

€ 300 - 400

62

GERMANY
JAR, 1920S

H. 17.6 cm. Majolica, polychrome alkaline glaze. Marked: GT 255 (incised).

€ 200 - 300



63

JOSEF HARTWIG
2 OWLS, 1922

H. 15-16 cm. Made at Bauhaus Weimar. Faience, glazed brown or plaster, glazed brown.

Plaster model with glaze flaking on the chest.

Cf. Wingler, Das Bauhaus, 1919-1933, Cologne 1962, p. 296 (execution in marble); Exh. cat. bauhaus 3 (vol. 9), Galerie am Sachsenplatz, Leipzig 1978, ill. p. 48, cat. no. 52 (stoneware).

€ 5.000 - 6.000



64

**LOUISE HARKORT
VASE, 1924-31**

H. 9.2 cm. Made at Steingutfabriken Velten-Vordamm. Majolica, polychrome glaze. Marked: manufacturer's mark, F 130, 63 (blue glaze stamp), S 11. (embossed).

€ 300 - 400

65

**MARGUERITE FRIEDLAENDER-WILDENHAIN;
TRUDE PETRI
'HALLE' TEA EXTRACT POT, 1929**

H. 9 cm. Made by StPM Berlin, 1932. Porcelain, white, glazed, gold ring decoration, silver-plated metal handle. Marked: scepter (blue, under glaze), imperial orb (red, on glaze), mark of Burg Giebichenstein, date letter, z (embossed), 84/116, ... (pres. painter Erich Schulz, black, handwritten). Jarchow, Berliner Porzellan im 20. Jahrhundert, Berlin 1988, p. 43.

€ 400 - 500



66

**HEDWIG BOLLHAGEN
LIQUEUR SERVICE 1934-40**

H. 4.1-17.5 cm; 16.2 x 24.9 cm. Made by HB workshops, Velten. Majolica, polychrome glaze. Marked: VELTEN HB KERAMIK, handgemalt (black glaze stamp), 1018 5, 32, 1018 15 (blue, handwritten).

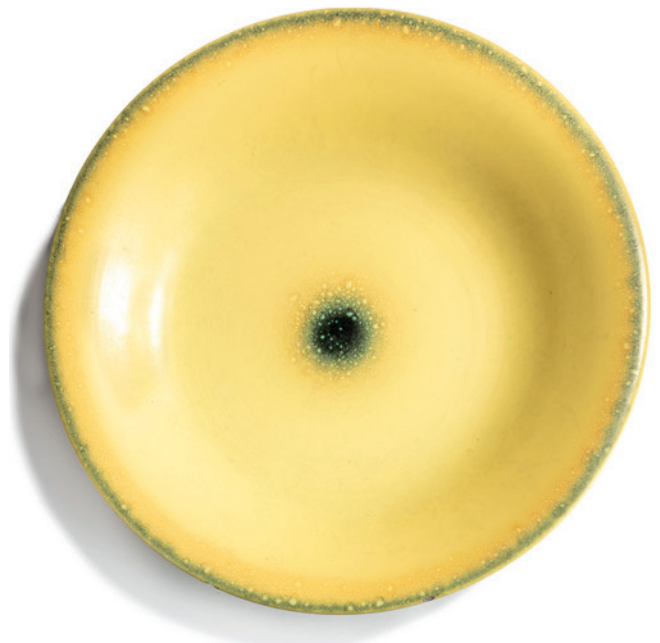
€ 500 - 600

67

**MARGARETE HEYMANN-MARKS
PLATTER, 1929/30**

D. 54 cm. Made by Hael workshops, Marwitz. Earthenware, yellow matt glaze. Marked: Manufacturer's mark, 194f / 32 (glaze stamp).

€ 2.000 - 2.300



MARGARETE HEYMANN-MARKS
15 VASES AND BOWLS, 1929/30

1. Bowl, yellow-orange. H. 8 cm, Ø 25.5 cm.
Earthenware, glazed yellow and orange. Marked: manufacturer's mark, 85b 35 (blue glaze stamp).
2. Troughed bowl with cube decoration. H. 4.2 cm, Ø 21.3 cm. Earthenware, anthracite grey, glazed with lustre gloss. Marked: 1317/204 (blue glaze stamp). Small nicks on the edge of the edge.
3. Bowl with folded edge. H. 4 cm, Ø 23.5 cm.
Earthenware, anthracite-grey glaze with lustre gloss. Unsigned. Rubbings inside.
4. Wide bowl, yellow. H. 6 cm, Ø 37 cm.
Earthenware, yellow matt glaze. Marked: manufacturer's mark. Inside slightly rubbed, small nicks on the outer rim.
5. Small bowl with retracted mouth rim. H. 4 cm, Ø 15.4 cm. Earthenware, glazed yellow. Marked: manufacturer's mark (black).
6. Square plate. 16 x 16 cm. Earthenware, glazed yellow. Marked: manufacturer's mark (black).
7. Pyramid bowl, brown. H. 5.5 cm, 11.5 x 11.4 cm.
Earthenware, brown, matt glaze with lustre gloss. Unsigned. Three tiny rubbings on the muzzle.
8. Pyramid bowl, green. H. 5.5 x 11.6 x 11.6 cm.
Earthenware, greenish glaze with lustre gloss. Unsigned.
9. Small vase, brown. H. 8.7 cm. Earthenware, brown glaze with lustre gloss. Marked: manufacturer's mark, 180 a U (blue glaze stamp). 2 longer hairline cracks down from the mouth.
10. Double ball vase. H. 14.5 cm. Earthenware, brown matt glaze with lustre gloss. Marked: manufacturer's mark (black). Long hairline crack with a flaw at the mouth and at the end.
11. Planter, green-orange. H. 11.4 cm. Earthenware, green and orange matte glaze. Marked: manufacturer's mark, model number (blue glaze stamp, indistinct). 3 nicks on the muzzle.
12. Narrow neck vase. H. 27.5 cm. Stoneware, yellow and orange matt glaze. Marked: manufacturer's mark, 300a, 35 (blue glaze stamp). Slightly bumped bottom.
13. Cone ball vase. H. 12.8 cm. Earthenware, glazed greenish, yellowish, anthracite and light blue. Marked: Manufacturer's mark, 14/344 (blue glaze stamp).
14. Box, uranium red. H. 6.3 x 9.7 x 7.9 cm.
Earthenware, glazed uranium red and black. Marked: Manufacturer's mark, 290a 18 10 (black glaze stamp).
15. Box, black and white. H. 6.5 x 9.7 x 7.7 cm.
Earthenware, glazed black and eggshell white. Marked: Manufacturer's mark, 290a 18 29 (black glaze stamp). Bottom chipped in 2 places, lid in one.

Execution: Hael workshops, Marwitz.

Provenance: From the household of Margarete Heymann-Marks; acquired directly from Ms. Heymann-Marks in England in the 1980s; art trade, Berlin.

Wear and tear. Chips, hairlines.

Exh. cat. Keramik und Bauhaus, Bauhaus Archive, Berlin 1989, no. 297 (no. 3), no. 300 (no. 6), no. 301 (no. 7, 8).

€ 20.000 - 25.000





69

**INNEDECORATION CARL VOGEL, VIENNA
SECRETARY, 1920S**

H. 166.5 x 168.5 x 49 cm. Wooden box construction with walnut and walnut veneer, maple veneer inside, clear glass.

The cabinet was purchased by the consignor's grandparents in Vienna in the 1920s and has been in the family ever since.

€ 900 - 1.200

70

**EL LISSITZKY
'D 62' ARMCHAIR, 1928/1978**

H. 72 x 80 x 65 cm. Made by Tecta, Lauenförde. Polished stainless steel sheet, textile, black and red, wood, casters.

€ 700 - 800



71

**LE CORBUSIER; CHARLOTTE PERRIAND;
PIERRE JEANNERET
2 'LC 2' EASY CHAIRS, 1928**

H. 61 x 76 x 70 cm. Made by Cassina, Milan. Tubular steel, chrome-plated, black leather. Marked: Le Corbusier LC/2 2143 (embossed).

New leather.

Exh. cat. Charlotte Perriand, CGP, Paris 2005, pp. 12, 151; De Fusco (ed.), Le Corbusier, Designer: Furniture, 1929, Reprint, Woodbury 1977, pp. 62f.

€ 2.500 - 3.500





72

**ANDRÉ LURÇAT
'B 327' DESK, 1930**

H. 75 x 145 x 75 cm. Made by Thonet Mundus, Paris (attr.). Tubular metal, chrome-plated, wooden box construction, blockboard, plywood with walnut veneer.

€ 2.500 - 3.500

73

**FRANCE
ILLUMINATED WALL MIRROR, C. 1930**

D. 24 cm, depth 15 cm. tubular brass, sheet brass, matted glass, plate glass.

Not electrified.

Image online.

€ 400 - 500

74

**METZ & CO., ROTTERDAM (ATTR.)
BOOKSHELF 1930S**

H. 142 x 72.5 x 38.5 cm. Tubular steel, chrome-plated, wooden box construction, blockboard, painted black, blue and red.

€ 2.000 - 2.500



75

**MÜCKE MELDER, FRYŠTÁT
SIDE TABLE, 1930S**

H. 75.5 x 55 x 35 cm. Tubular steel, chrome-plated, blockboard, painted blue.

Marked: manufacturer's metal badge.

€ 800 - 900



76

**DS STAHL, DENMARK
STOOL, 1930S**

H. 45 x 34.5 x 38.5 cm. Tubular steel, chrome-plated, wood, cotton, wax-polished and stained dark red.
Marked: DS STAAL STEL.

Image online.

€ 250 - 350



77

**CZECHOSLOVAKIA
3 STOOLS, 1930S**

H. 42.5 cm, Ø 35 cm, tube Ø 2.0 cm; H. 43.5 cm, Ø 34 cm, tube Ø 1.9 cm; H. 45.5 cm, Ø 37.5 cm. Tubular steel, chrome-plated, oak wood, beech wood, ash veneer, stained dark.

Different manufacturers: Mücke-Melder Fryštát, Slezak, Bystřice pod Hostýnem and Gottwald, Ústí nad Labem.

€ 1.200 - 1.500

78

**CZECHOSLOVAKIA
TYPEWRITER TABLE / SIDE TABLE, 1930S**

H. 69.5 x 73 x 44.5 cm; Tube Ø 2.2 cm. Tubular steel, chrome-plated, plugged, blockboard, stained dark.

Image online.

€ 500 - 600

79

**VICHR, PRAGUE
2 ARMCHAIRS, C. 1930**

H. 78 x 55 x 61.5 cm. Tubular steel, nickel-plated, wood, painted black.

€ 1.500 - 1.800



80

**JINDRICH HALABALA
'H-91' CANTILEVER CHAIR, 1931**

H. 83 x 59.5 x 85 cm; Tube D. 2.5 cm. Made by Spojene UP Zavody, Hodonin. Tubular steel, chrome-plated, wood, stained dark, grey-brown iron yarn cover.

Chatrny, Jindrich Halabala, Brno 2003, p. 90; Mačel, 2100 metal tubular chairs, Amsterdam 2006, p. 145.

€ 3.500 - 4.000



81

**GREAT BRITAIN
2 ARMCHAIRS, C. 1933**

H. 76 x 56.5 x 75 cm; Tube Ø 2.4 cm. Tubular steel, chrome-plated, wooden armrests, stained dark brown; Upholstery with orange-yellow textile cover.

Cf. Mačel, 2100 metal tubular chairs, Amsterdam 2006, p. 153.

€ 1.500 - 2.000



82

**METZ & CO., ROTTERDAM
SIDE TABLE, C. 1935**

H. 60.5 cm, D. 64 cm; Tube: D. 2.3 cm. Tubular metal, chrome-plated, plywood, painted grey.

Cf. Vegesack, Deutsche Stahlrohrmöbel, Munich 1986, p. 156 (Thonet, 'TF121', c. 1955).

Image online.

€ 400 - 500

83

**DESMET, GHENT
CABINET, C. 1935**

H. 87 x 75 x 30 cm. Wood, painted black and silver, resp. dark red inside.

€ 1.800 - 2.200





84

**RUDOLF STEINER
ANTHROPOSOPHICAL 'DRAMENSIEGEL' 'THE GATE OF
INAUGURATION', 1912**

H. 4 cm, Ø 10.5 cm. Made by Justina Schachenmann, c. 1950. Birch wood, copper sheet and carnelian.

One of four vignettes for a mystery drama. The first copies were made by Bertha Meyer-Jacobs in 1912.

€ 500 - 700

85

**RUDOLF STEINER (SURROUNDINGS)
ANTHROPOSOPHICAL WRITING UTENSILS, 1930-50**

Stationery: H. 6 x 26.5 x 15 cm; Blotter: H. 6 x 20 x 8.7 cm. Carved oak wood, glass and metal inkwell. Marked: workshop signet (unknown).

€ 500 - 600



86

**RUDOLF STEINER (SURROUNDINGS)
6 ANTHROPOSOPHICAL WOODEN TOYS, 1930-50**

3 houses, church, 2 fir trees. H. 8-20.2 cm. Carved wood, painted in different colours.

€ 300 - 500



87

**RUDOLF STEINER
(SURROUNDINGS)
ANTHROPOSOPHICAL
PICTURE FRAME, 1930-50**

67.5 x 41.7 cm. Made by Art carving workshop Dornach (attr.). Elm, carved.

With a photograph of the 'Human Representative' by Rudolf Steiner and Edith Maryon, 1917-25, mounted on cardboard.

€ 500 - 700



88

**RUDOLF STEINER (SURROUNDINGS)
3 ANTHROPOSOPHICAL FRAMES, 1930-50**

Two stand frames: H. 16-22 cm; Wall frame: 34.7 x 20.8 cm.

Made by Art carving workshop Dornach (attr.). Elm, carved, glass. 2 frames with photographs of the 'Representative of Humanity' by Rudolf Steiner and Edith Maryon, 1917-25.

€ 500 - 700





89

**RUDOLF STEINER (SURROUNDINGS)
ANTHROPOSOPHICAL DANCER 'EURYTHMY', 1930S**

H. 33 cm. Made by Art carving workshop Dornach (attr.). Carved teak. Marked: 12, signet (embossed, not identified). Cf. Exh. cat. Rudolf Steiner, Vitra Design Museum, Weil am Rhein 2010, p. 151.

€ 400 - 600

90

**RUDOLF STEINER (SURROUNDINGS)
ANTHROPOSOPHICAL CANDLESTICK, 1940S**

H. 12,8 cm, D. 44 cm. Carved wood, sheet brass, hammered. Six-lights, flexible. Cf. Fäth, Dornach Design, Dornach 2011, p. 100 (Camphill).

€ 500 - 700

91

**RUDOLF STEINER (SURROUNDINGS)
ANTHROPOSOPHICAL FRAME, C. 1950**

H. 57.5 x 39.5 x 3 cm. Made by Art carving workshop, Dornach (attr.). Birch wood, carved.

€ 1.000 - 1.200



92

**SCHERRER JOINERY, DORNACH
2 ANTHROPOSOPHICAL CHAIRS, 1950S**

H. 90 x 42.5 x 56.5 cm. Cherry wood, cherry veneer. € 600 - 700



93

HANS BROCKHAGE
ROCKING CHAIR / CAR, 1950

H. 36.5 x 100 x 37.5 cm. Made by Siegfried Lenz, Bergiesshubel/Pirna. Beechwood, plywood, red wheels, rubber. Car or rocking chair. The design was conceived at the tutorial for toys held by Mart Stam at Hochschule für Bildende Künste in Dresden.

Exh. cat. Fidgety Philip! A Design History of Children's Furniture, Vienna 2006, p. 160, fig. 57; Höhne, Klassiker des DDR-Designs, Berlin 2001, p. 259.

€ 700 - 800



94

HANS BROCKHAGE
ROCKING CHAIR/CAR (VARIATION), 1950

H. 37 x 98.5 x 36.5 cm. Made by Siegfried Lenz, Pirna. Tubular steel, painted green and red, white plastic, sheet metal, painted brown, red metal wheels with rubber.

Exh. cat. Fidgety Philip! A Design History of Children's Furniture, Vienna 2006, p. 160, fig. 57; Höhne, Klassiker des DDR-Designs, Berlin 2001, p. 259.

€ 900 - 1.200



Since the end of the 1930s the workshop in Hellerau, under the direction of Bruno Paul, had tried to develop a method of chipless bending of plywood. After the second World War, the topic was revisited due to the shortage in material. In 1950, Erich Menzel's '50642' plywood chair came into production, a furniture classic of the GDR. "It was made of 29 layers of resin-drenched plywood, that are being moulded with the aid of a steam-heated forging die that exerts a hydraulic pressure of 60 kg/cm² and bends 140 grades in 25 minutes (...)". A construction process that needed less material and thus cost less. The 'Radio hall' chair was produced this way, too. Franz Ehrlich was chief designer of the furniture department of Hellerau from the 1950s until the middle of the 1960s. Moreover, he was responsible for the construction and interior design of the central broadcast building of the former GDR. Around 100 chairs were produced for the studio.

95

FRANZ EHRLICH
'RADIO HALL' CHAIR, C. 1955

H. 76 x 41,5 x 51.5 cm. Made by VEB Deutsche Werkstätten, Dresden-Hellerau. Beech plywood, green felt. Aluminium badge, marked: 16524.

Seat and back covered with felt to prevent creaking.

Arnold, Vom Sofakissen zum Städtebau, Dresden-Basel 1993, p. 117.

€ 1.200 - 1.800



96

**HEDWIG BOLLHAGEN
VASE, C. 1960**

H. 41 cm. Made at HB workshops, Marwitz. Earthenware, glazed beige and brown. Marked: HB 12 (cut out).

Strasser, Hedwig Bollhagen und die HB-Werkstätten, Munich 2019, p. 92.

€ 700 - 800

97

**MARGARETE JAHNY; ERICH MÜLLER; PAUL BITTNER; FRITZ KEUCHEL; TILO POITZ
72 'SUPERFEST' GLASSES,
1978/79**

H. 10.1-16.2 cm. Made by VEB Kombinatbetrieb Sachsensglas, Schwepnitz. Clear glass, 0.1/0.3/0.5 litres. Marked: Superfest.

The 'Superfest' glasses are based on the 'Wirteglas' design by renowned GDR designers Margarete Jahny and Erich Müller. They are treated in a special way during fabrication so that they can withstand a fall from the table or the like; they are 'superfest'.

Höhne, Penti, Erika und Bebo Sher, Berlin 2002, pp. 63-65.

€ 300 - 350



98

**RENATE MÜLLER
SEAL, 1971**

H. 58 x 50 x 56 cm. Made by Renate Müller, Sonneberg, c. 1993. Burlap, blue and red leather. Marked: Manufacturer's hanging label.

Exh. cat. Renate Müller Spielzeug + Design, Deutsches Spielzeugmuseum, Sonneberg 1996, p. 22f.

€ 700 - 800



99

**RENATE MÜLLER
TORTOISE, 1971**

H. 20,5 x 69.5 x 53 cm. Made by Therapeutisches Spielzeug, Renate Müller, Sonneberg, c. 1993. Burlap, blue, red and white leather.

Exh. cat. Renate Müller Spielzeug + Design, Deutsches Spielzeugmuseum, Sonneberg 1996, p. 24.

€ 700 - 900



100

**RENATE MÜLLER
WHALE, 1972**

H. 51.5 x 56,5 x 53 cm. Made by Renate Müller, Sonneberg, c. 1993. Burlap, blue and red leather. Marked: Manufacturer's hanging label.

Exh. cat. Renate Müller Spielzeug + Design, Deutsches Spielzeugmuseum, Sonneberg 1996, p. 28f.

€ 1.000 - 1.200



101

**DIETER RAMS
'RT 20' RADIO, 1961**

H. 26 x 50 x 18 cm. Made by Braun AG, Frankfurt. Plywood with pear veneer, sheet metal, lacquered dark grey, plastic, grey. Marked: Braun RT 20.

Klatt / Staeffler, Braun + Design Collection, Hamburg 1995, p. 27.

€ 800 - 900

102

**DIETER RAMS
'T 540' PORTABLE RADIO, 1962**

H. 15 x 23 x 6 cm. Made by Braun AG, Frankfurt/Main. Plastic, grey and black, metal, chrome plated. Marked: Manufacturer's label with serial number.

Klatt / Staeffler, Braun + Design Collection, Hamburg 1995, p. 34.

€ 400 - 500



103

**DIETER RAMS
'BRAUN AUDIO 1 M' STEREO SYSTEM 1962**

H. 16 x 65 x 28 cm. Made by Braun AG, Frankfurt/Main. Sheet aluminium, partly lacquered black, wood, lacquered black, metal-wire mesh, perspex, translucent. Marked: Braun, manufacturer's label.

With two loudspeaker boxes 'L 450', 1965, H. 47 x 28 x 11 cm.

Early version.

Klatt / Staeffler, Braun + Design Collection, Hamburg 1995, p. 41, p. 71.

€ 500 - 600





104

DIETER RAMS

**'CSV 13' AMPLIFIER, 1962, 'CET 15' TUNER, 1962,
'PCS 51' RECORD PLAYER, 1965**

H. 10.5 x 40 x 33 cm; H. 11 x 20 x 33.5 cm; H. 20.5 x 41 x 32 cm.

Made by Braun AG, Frankfurt/Main. Sheet aluminium, lacquered grey and greyish-white, wood, lacquered grey, translucent perspex.

Marked: BRAUN, model numbers.

Klatt / Staeffler, Braun + Design Collection, Hamburg 1995, p. 60, p. 61, p. 65, p. 80.

€ 2.000 - 2.500

105

DIETER RAMS

'TC 20' STEREO SYSTEM, 1963

H. 13.5 x 52 x 24.5 cm. Made by Braun AG, Frankfurt/Main. Sheet aluminium, lacquered greyish-white, translucent perspex.

Marked: Braun, manufacturer's labels.

Klatt / Staeffler, Braun + Design Collection, Hamburg 1995, p. 40, p. 71.

€ 400 - 500



106

GÜNTER BELTZIG
'FLORIS' CHAIR, 1967

H. 106,5 x 46 x 67,5 cm. Made by BBD, Brothers Beltzig Design, Wuppertal. Orange-red polyester, reinforced with fibreglass.

From pre-series production. Provenance: Given to the owner by his former professor at the Free University of Berlin; the professor was friends with G. Beltzig.

Exh. cat. Experiment 70, Ingolstadt 2002, p. 26.

€ 9.000 - 12.000





107

LUIGI COLANI
'DER COLANI', 1971/72

H. 66 x 53.5 x 65,5 cm. Made by Top System, Burkhard Lübke, Bielefeld. Yellow polyethylene. Marked: Design Luigi Colani Toppsystems Burkhard Lübke ges. gesch. made in W-Germany.

Exh. cat. Experiment 70, Ingolstadt 2002, p. 129.

€ 800 - 900

108

LUIGI COLANI
'DER COLANI', 1971/72

H. 66 x 53.5 x 65,5 cm. Made by Top System, Burkhard Lübke, Bielefeld. Green polyethylene. Marked: Design Luigi Colani Toppsystems Burkhard Lübke ges. gesch. made in W-Germany.

Exh. cat. Experiment 70, Ingolstadt 2002, p. 129.

€ 800 - 900



109

LUIGI COLANI
'TV 70' TV-SET, 1994

H. 55 x 73 x 48 cm. Made by RFT, Strassfurt, c. 1994. Blue ABS-plastic, glass, sheet metal. Marked: RFT Colani TV 70-2000.

With 2 remote controls. Limited edition of 3000 pieces. With original certificate.

€ 1.200 - 1.500



110

LUIGI COLANI
'YLEM', 1971

Loose-leaf collection of 120 depictions of designs and ideas of Luigi Colani, designed in 1971. 30 x 30.1 cm. Edited by Edizione Internazionale Colani and Bertelsmann, Gütersloh. Red plastic case with handle, 41 x 31 cm. Made by Standard Plastics GmbH., Lüdenscheid. Marked: Y, Ylem.

Exh. cat. Experiment 70, Ingolstadt 2002, p. 40 (text), pp. 44ff.

€ 250 - 300



111

**LUIGI COLANI
'ZEN' TEA SET FOR SIX PERSONS,
1973**

16 pieces: Pot with warmer: H. 26.5 x 28 x 27.5 cm; creamer: H. 5.8 cm; sugar bowl: H. 5 cm; 6 cups and saucers: H. 4.6 cm; D. 16.4 cm; 6 plates: D. 18.5 cm. Made by Friesland Bentz, Varel. Earthenware, glazed black. Marked: Luigi Colani, manufacturer's mark.

€ 500 - 600

112

**LUIGI COLANI
RELIEF PLATE WITH EROTIC
MOTIF, C. 1975**

H. 32 x 31 x 7 cm. Plaster.

Cf. exh. cat. Luigi Colani und der Jugendstil, Bröhan-Museum Berlin 2020-21, Cologne 2020, p. 73.

€ 400 - 500



113

**LUIGI COLANI
'AUTO ENGEL' PLASTER RELIEF,
C. 1975**

H. 16.2 x 12.5 x 33 cm. Plaster.

Signed: L. Colani (handwritten, black).

€ 400 - 600

114

**LUIGI COLANI
'TOBIFANT' DESK AND CHAIR, 1977**

Desk: H. 64-68 x 116 x 60 cm; chair: H. 72.5 x 49.5 x 43.5 cm. Made by Kinderlücke, Rheda-Wiedenbrück, in 1978. Birch plywood. Marked: Kinderlücke Colani Collection. With hammer.

Exh. cat. Experiment 70, Ingolstadt 2002, p. 97.

€ 1.400 - 2.000





115

**LUIGI COLANI
'DESIGNING TOMORROW', 1978**

Luigi Colani, 'Designing Tomorrow', Tokyo 1978.

With a handwritten autograph.

€ 200 - 300

116

**LUIGI COLANI
TELEPHONE, 1984**

H. 7.5 x 23 x 19 cm. Made by NEC, Tokyo. Crème-white and black plastic, digital display under glass. Instructions on the stand in Japanese characters. Marked: NEC Colani (printed), Nec, Made in Japan (raised).

€ 700 - 800



117

**LUIGI COLANI
RADIO CONTROLLED DOCTOR'S
WATCH, 1988**

H. 14 x 19.5 x 10.5 cm. Made by Lintas, Switzerland. White plastic, plexiglass, white dial face with digital date display, black and pink hands. Marked: Colani (printed, 2x), no. 0647.

In original box.

€ 200 - 250

118

**LUIGI COLANI
2 PLANTERS, C. 1990**

H. 32.5 cm, Ø 40-48 cm. Made by Ferdinand Lusch, Holte-Stukenbrok Castle, 1997. White, fiberglass-reinforced plastic. Marked: facsimile signature Colani, date stamp 2 97.

€ 450 - 500



119

**LUIGI COLANI
2 PLANTERS, C. 1990**

H. 32.5 cm, Ø 40-48 cm. Made by Ferdinand Lusch, Holte-Stukenbrok Castle, 1997. White, fiberglass-reinforced plastic. Marked: facsimile signature Colani, date stamp 1 97.

Image online.

€ 450 - 500

120

**LUIGI COLANI
'B1-COLANI' WHEELCHAIR, C. 2010**

H. 82.5 x 62 x 85 cm. Made by Bischoff & Bischoff, Karlsbad. Tubular metal, chrome-plated, plastic, dark grey, sheet metal, carbon fibers, textile, black, rubber tires. Marked: facsimile signature Colani, textile label B + B.

€ 500 - 600





121

**RICHARD BAMPI, KANDERN
VASE, C. 1956**

H. 38.8 cm. Stoneware, feldspar glazes, pink. Marked: Workshop signet.

Cf. Schüly, Richard Bampi, Stuttgart 1993, p. 299, no. 631.1.

€ 500 - 600



122

**WILHELM AND ELLY KUCH
TALL VASE, 1950S**

H. 39.5 cm. Majolica, glazed dark brown over white. Marked: workshop mark (embossed).

€ 350 - 400



123

**SIEGMUND SCHÜTZ
'SUN' WALL DECORATION ,
1954-56**

D. 43.5 cm. Made by StPM Berlin. Porcelain, white, glazed, copper sheet. Marked: scepter (dark green, under glaze).

Part of the wall decoration 'Europa and the bull' for the Lloyd steamer 'Bayernstein' and the Hotel 'Vier Jahreszeiten' in Munich.

Gronert, Porzellan der KPM Berlin, 1918-88, Vol. II, Berlin 2020, p. 268; The cat. rais. of KPM Berlin from 1914 mentions the wall relief under 1956 / B19.249 / 5,8744ff, in: Jarchow, Berliner Porzellan im 20. Jahrhundert, Berlin 1988, p. 299.

€ 1.500 - 1.800



124

**WILHELM WAGENFELD
3 ASHTRAYS, '500', '501', AND
'502', 1951 AND 1962, RESPEC-
TIVELY**

D. 9.3-16.3 cm. Made by WMF, Geislingen. Tourmaline green or blue glass. Manske / Scholz (eds.), *Täglich in der Hand*, Bremen 1998, p. 332, nos. 500, 501, 502.

€ 120 - 150

125

**WILHELM WAGENFELD
3 '504' TIPPING ASHTRAYS, 1959**

H. 8.8 cm. Made by WMF, Geislingen. Tourmaline green Glass, Cromargan. Marked: manufacturer's mark. Manske / Scholz (eds.), *Täglich in der Hand*, Bremen 1998, p. 332, no. 504.

€ 150 - 200

126

**KARL WIEDMANN
'SPUN VASE', 1969**

H. 20.3 cm. Made by Gralglas hut, Dürnau. Overlaid glass, intercalaire decor with stripes, warped, violet powder melts, matted and partially iridescent.

€ 150 - 250



127

**ELSA FISCHER-TREYDEN
GLASS OBJECT, 1981**

H. 27 x 42 x 24 cm. Made by Rosenthal, Selb. Glass clear and white, partially etched. Marked: Rosenthal glas studio Fischer-Treyden (sandblasted), 339 - 11/20 (engraved).

€ 1.500 - 1.800

128

WILHELM BRAUN-FELDWEG
'GINGO' CUTLERY FOR SIX PEOPLE, 1962

34 pieces: 6 tablespoons: L. 19.3 cm, 6 forks: L. 19.7 cm, 6 knives: L. 20.8 cm, 6 teaspoons: L. 13.5 cm, 6 dessert forks: L. 15.9 cm, salad servers: L. 19.4 cm, ladle: L. 19.3 cm, meat fork: L. 17.5 cm. Made by Britanniawarenfabrik W. Seibel, Mettmann. Alpacca, silver-plated. Marked: Manufacturer's mark, silver-plating mark, additional mark.
 Exh. cat. Wilhelm Braun-Feldweg, Württembergisches Landesmuseum, Stuttgart 1984, p. 35.
€ 300 - 400



129

WILHELM BRAUN-FELDWEG
'MODEL 1963' CUTLERY FOR SIX PEOPLE, 1963

42 pieces. 6 tablespoons: L. 19.9 cm, 6 forks: L. 19.9 cm, 6 knives: L. 22 cm, 6 teaspoons: L. 13.2 cm, 6 dessert forks: L. 15.1 cm, 3 ladles: L. 19 cm or 27 cm, 2 vegetable spoons: L. 23.1 cm, cake server: L. 23.7 cm, carving fork: L. 22.8 cm, salad servers: L. 20 - 20.5 cm, meat fork: L. 18 cm, sugar spoon: L. 12.9 cm. Made by Britanniawarenfabrik W. Seibel, Mettmann. Alpacca, silver-plated. Marked: Manufacturer's mark, silver-plating mark, patent mark.
 Exh. cat. Wilhelm Braun-Feldweg, Württembergisches Landesmuseum, Stuttgart 1984, p. 36.
€ 350 - 450



130

MARGRET HILDEBRAND
'BRÜSSEL' BALE OF FABRIC, 1954

L. ca. 650 x 126 cm. Made by Stuttgarter Gardinenfabrik, Stuttgart. Cotton, polychrome print. Marked: "brüssel" design: margret hildebrand.
 Image online.
€ 350 - 500

132

HFG ULM
CHRISTMAS TREE STAND, C. 1955

H. 4 x 40 x 40 cm. Pinewood.
 Provenance: Former employee of the hfg Ulm.
€ 600 - 700



131

DERU, WIESBADEN
FIVE 'DERU' TOY ANIMALS, 1960S

Elephant, boxer, dachshund, duck, frog. H. 4-15 cm. Leather, folded and riveted. Marked: DERU GERMANY (branding).
 The dachshund is in its original packaging.
€ 550 - 600





134

HFG ULM
'1900' - 'AZ GRAND PRIX'
TABLE LIGHTER, 1967

H. 9.5 cm, D. 4.5 cm. Made by Augusta-Zünder lighter factory Mayer & Co., Augsburg. Tubular metal, sheet metal, partially painted black, plastic, black. Marked: az grand prix Made in W. Germany, embossed.

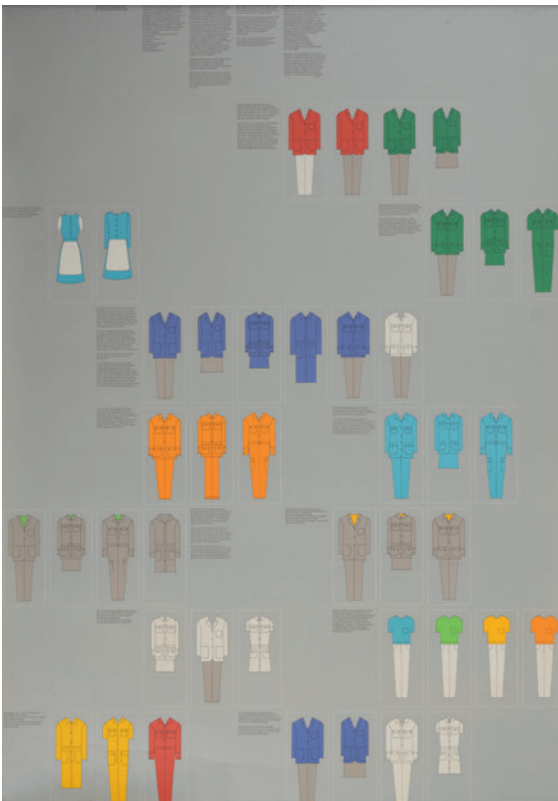
€ 300 - 350

133

PETER RAACKE
'ULMER KOFFER', SUITCASE, 1966

H. 36.5 x 40 x 8 cm. Made by Ruddies Bugmöbel, Germany. Yellow polypropylene.

€ 200 - 250



135

OTL AICHER ET AL.
POSTER 'EINKLEIDUNG DES OFFIZIELLEN PERSONALS FÜR
DIE SPIELE DER XX. OLYMPIADE MÜNCHEN 1972', 1972

H. 118.7 x 84 cm. Flat printing on paper.

Partially restored. Tear on the right side in the lower fifth of the sheet.

€ 500 - 600

136

OTL AICHER ET AL.
POSTER 'WELTKONGRESS AUGSBURG' 16.-24. AUGUST 1972

In the art program of the XX. Olympic Games Munich 1972. H. 83.7 x 59.2 cm. Flat printing on paper. Marked: Gestaltungsbüro ay, Printed in Germany by Himmer-Druck, Augsburg.

€ 400 - 500



137

PETER KELER
'COLOUR SPECTRUM' IN HANDMADE FRAME, C. 1945

25.7 x 29 cm. Mixed media on paper. Signed: PETER KELER.
 Frame: 40.5 x 34.2 cm. Wood, painted black, green and egg-plant purple.

From the estate of Peter Keler, which was purchased by a Munich-based antique dealer a few years ago.

Exh. cat. Punkt Punkt Linie Fläche, Bauhaus-Archiv, Berlin 1999, p. 296 (text).

€ 1.200 - 1.500

138

HEINER SCHOECK
2 CHAIRS, 1949

H. 79 x 51 x 59 cm. Made by Domus, Schwaikheim. Wood, painted black, red nylon cord.

€ 400 - 500



139

EGON EIERMANN
2 'SE 42' CHAIRS, 1949/50

H. 77 x 51.5 x 50 cm. Made by Wilde & Spieth, Esslingen. Beech plywood, partially painted white.

Exh. cat. Egon Eiermann. Die Möbel, Badisches Landesmuseum Karlsruhe 1999, p. 75.

€ 2.000 - 3.000

140

**HANS HARTL
DESK, C. 1950**

H. 74 x 140 x 76 cm. Made by DeWe, Deutsche Werkstätten, Munich. Wooden box construction, ash wood, ash veneer, white-grey linoleum. Marked: manufacturer's label.

€ 900 - 1.200



141

**HANS SCHWIPPERT
DREISITZER-SOFA, UM 1950**

H. 40 x 203 x 76 cm. Sectional metal, tubular metal, painted black, wood, painted black, black leather. Provenance: Bundeshaus Bonn, private property of Prof. Hans Schwippert, private property southern Germany.

€ 2.800 - 3.500



142

**HELMUT MAGG
SIDE TABLE, C. 1953**

H. 49 x 75 x 38 cm. Made by WK-Möbel, Stuttgart (attr.). Metal rods, painted white, blockboard, walnut veneer.

€ 600 - 700



143

**GERMANY
BABY'S CHANGING UNIT, C. 1950**

H. 85-94 x 95 x 72 cm. Wooden box construction, blockboard, painted white, tubular metal, chrome-plated, sheet metal, nickel-plated, black plastic laminate.

€ 700 - 800

144

**OPAL KLEINMÖBEL, GERMANY
3 VALET STANDS, 1950S**

H. 106-107 x 42-48 x 29-35 cm. Beech wood, painted clear, tubular metal, nickel-plated. Marked: Manufacturer's label (1x). Image online.

€ 600 - 700

145

**BERTHOLD MÜLLER
MOSAIC TABLE, 1950S**

H. 58 x 140 x 60 cm. Made by Berthold Müller, Mosaik-Werkstätte, Oerlinghausen. Oak wood, partially painted black, ceramic tiles in white, grey and pink. Marked: Manufacturer's stamp.

€ 1.200 - 2.000



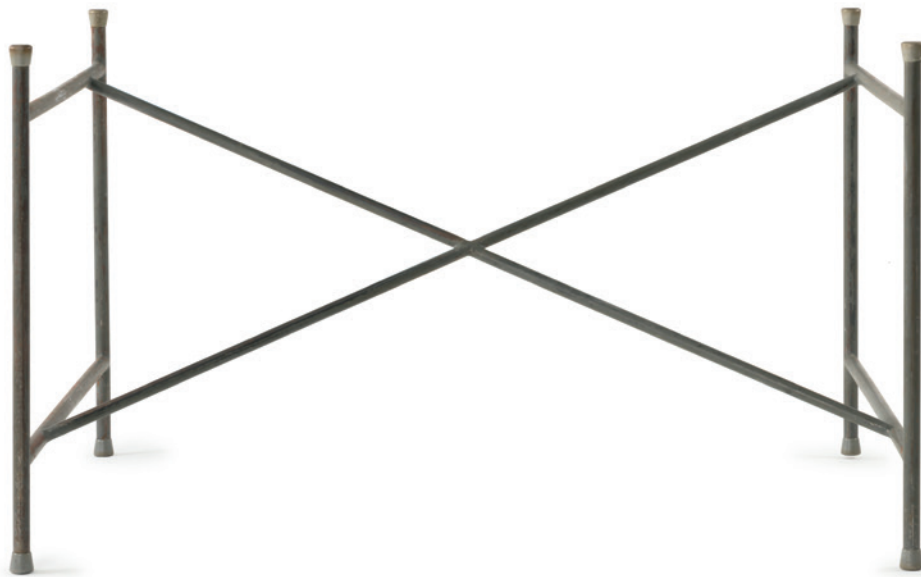
146

**EGON EIERMANN
4 'SE 68' CHAIRS, 1951**

H. 77.5 x 46.5 x 48 cm. Made by Wilde & Spieth, Esslingen. Tubular metal, painted black, plywood with teak veneer. Exh. cat. Egon Eiermann. Die Möbel, Badisches Landesmuseum Karlsruhe 1999, p. 88f.

€ 900 - 1.200





147

EGON EIERMANN
4 'SE 119' CHURCH CHAIRS, 1952/53

H. 78 x 45.5 x 48 cm. Made by Wilde & Spieth, Esslingen. Beechwood, plywood with beech veneer, stained dark, cane.

Exh. cat. Egon Eiermann. Die Möbel, Badisches Landesmuseum Karlsruhe 1999, p. 97, p. 150.

€ 1.000 - 1.300

148

EGON EIERMANN
FRAME FOR A DRAWING TABLE, C. 1953

H. 65.5 x 112 x 80,5 cm. Made by Max Maier, Grötzingen or the locksmith's shop of the TH Karlsruhe (1950s - 1980s). Tubular metal, soldered, painted grey, clear rubber.

Exh. cat. Egon Eiermann. Die Möbel, Badisches Landesmuseum Karlsruhe 1999, p. 140.

€ 1.500 - 1.800

149

FRIEDRICH HIRZ
COLLECTION OF GRAPHIC WORKS, 1946-86

21 works. Various sizes. Watercolour, ink, pen drawing, gouache, pencil, ballpoint pen on various kinds of paper. Partially signed and dated.

Image online.

€ 350 - 400

150

FRIEDRICH HIRZ
MIXED LOT OF ARCHITECTURAL DRAWINGS, ET AL., 1953-86

44 works. Various dimensions. Construction and architectural drawings, site plans, 3 black and white photos. 7 newspaper clippings. Different techniques on different kinds of paper. Partially inscribed, dated or with the note: Entwurf: Friedrich Hirz.

Friedrich Hirz (1907-87), a student of Ludwig Mies van der Rohe's, was an architect and designer in Essen. The pavilion on Porscheplatz in Essen is one of his most famous buildings.

Image online.

€ 400 - 500





151

**MAUSER-WERKE, WALDECK
OFFICE CHAIR, 1950S**

H. 93.5 x 54.5 x 59 cm. Chrome-plated tubular steel, metal, lacquered black, wood, painted black, synthetic leather, black.

€ 500 - 600



152

**MAUSER-WERKE, WALDECK
OFFICE CHAIR, 1950S**

H. 93.5 x 54.5 x 59 cm. Tubular steel, chrome-plated, metal, lacquered black, wood, painted black, artificial leather, dark red. Marked: Manufacturer's badge.

€ 500 - 600



153

**MAUSER-WERKE, WALDECK
'ATHENS' SIDEBORD, 1954**

H. 108 x 147 x 42 cm. Sheet metal, lacquered dark-red, tubular steel, chrome-plated, crème-white plastic covering, aluminium banding. Marked: Manufacturer's badge Mauser Werke G.m.b.H. Waldeck Bez. Kassel.

€ 1.800 - 2.000



154

**MAUSER-WERKE, WALDECK
'BERLIN' - 'RUNDFORM' DESK, C. 1954**

H. 74 x 200 x 100 cm. Sheet metal, lacquered dark-red, tubular steel, chrome-plated, crème-white plastic covering, aluminium banding. Marked: Manufacturer's badge Mauser Werke G.m.b.H. Waldeck Bez. Kassel.

Base with pull-out for paper and storage.

Cf. Vegesack, Deutsche Stahlrohrmöbel, Munich 1986, p. 142f.

€ 2.700 - 3.200

155

**MAUSER-WERKE, WALDECK
SMALL 'RUNDFORM' DESK, C. 1954.**

H. 68.5 x 110 x 48 cm. Sheet metal, lacquered dark-red, tubular steel, chrome-plated, crème-white plastic covering, aluminium banding. Marked: Manufacturer's badge Mauser Werke G.m.b.H. Waldeck Bez. Kassel.

Vegesack, Deutsche Stahlrohrmöbel, Munich 1986, p. 142.

€ 2.200 - 2.500



156

**MAUSER-WERKE, WALDECK
'TANGER / S' SIDE TABLE / LIQUOR CABINET, C. 1954**

H. 69 cm, D. 60 cm. Sheet metal, lacquered dark-red, tubular steel, chrome-plated, crème-white plastic covering, aluminium sheet. Marked: Manufacturer's badge Mauser Werke G.m.b.H. Waldeck Bez. Kassel

Vegesack, Deutsche Stahlrohrmöbel, Munich 1986, p. 142.

€ 1.800 - 2.200



157

HANS BELLMANN
6 '4015 ST' CHAIRS, 1952

H. 79.5 x 40.5 x 54.5 cm. Made by Horgen Glarus, Glarus. Tubular metal, chrome-plated, plywood, painted black. Marked: one chair with Swiss quality seal. Rüegg (ed.), Schweizer Möbel und Interieurs, Basel 2002, p. 146f., p. 170f.

€ 1.500 - 2.000



158

HANS GEORG BELLMANN
4 STACKABLE 'GA' CHAIRS, 1955

H. 83 x 30 x 46 cm. Made by Domus KG, Schwaikheim or Horgen Glarus, Glarus. Plywood, teak veneer, tubular steel, varnished black, yellowish white rubber feet. Rüegg (ed.), Schweizer Möbel und Interieurs, Basel 2002, p. 170 (text); Zwicky (ed.), Schweizer Möbel Lexikon, Zurich 2005, p. 62.

€ 1.500 - 1.800

159

ALOYS FERDINAND GANGKOFNER
'VALENCIA' CEILING LIGHT, C. 1955

H. 37 cm, D. 39 cm. Made by Peill & Putzler, Düren. Cased glass, clear and opal white, resp. opal-white with purple bands; metal mounting.

Fiell, 50s Decorative Art, Cologne 2000, p. 424; Ricke/Riemann, Aloys F. Gangkofner, München 2008, p. 106.

€ 700 - 900





160

**HANS BELLMANN
2 ARMCHAIRS, C. 1955**

H. 74 x 69 x 71 cm. Made by Domus, Schwaikheim. Birch wood, crème-white and black textile cover, tubular metal painted grey.

Cf. Bermpohl / Winklmann, Das Möbelbuch, Gütersloh 1958, p. 95 (sofa).

€ 800 - 1.200

161

**FERDINAND KRAMER
CHEST OF DRAWERS, C. 1955**

H. 64,5 x 70,5 x 62,5 cm. Wooden box construction, blockboard with elm veneer. Marked: Paper label of Frankfurt University.

From the Johann Wolfgang Goethe University, Frankfurt am Main.

€ 900 - 1.200

162

**JOSEF HILLERBRAND (ATTR.)
DESK, C. 1955**

H. 75 x 174 x 78.5 cm. Made by Vereinigte Werkstätten, Munich. Wooden box construction, walnut and walnut veneer, tubular brass, sheet brass.

€ 1.200 - 1.800

163

**NEW FRANKFURT (SURROUNDINGS)
MAGAZINE STAND, C. 1960**

H. 54,8 x 23 x 18 cm. Sheet metal, painted black. Image online.

€ 400 - 500





164

**HANS GEORG BELLMANN (ATTR.)
6 CHAIRS, C. 1955**

H. 78 x 50 x 49.5 cm. Made by Horgen Glarus, Glarus (attr.). Tubular metal, coated with black plastic, plywood with teak veneer.

€ 1.500 - 1.800

165

**AUGUST STRANGHÄNER, HERFORD
HOME OFFICE, 1950S**

H. 113.2 x 83 x 54 cm (closed). Wooden box construction, elm and elm veneer, maple veneer inside. Marked manufacturer's label.

€ 1.500 - 1.800



166

**ERNST MARTIN DETTINGER
6 '6057' CHAIRS, 1955**

H. 97.5 x 45.5 x 56 cm. Made by Lucas Schnaidt, Steinheim. Beechwood, brown-white fabric. Marked: 297. Exh. cat. Möbeldesign, Made in Germany, Design Center Stuttgart des Landesgewerbeamtes Baden Württemberg, 1985, no. 55.6.

€ 600 - 800





167

**ALOYS FERDINAND GANGKOFNER
'TOLEDO' CEILING LIGHT, 1958/59**

H. 30 cm, D. 50 cm. Made by Peill & Putzler, Düren. Cased glass, clear and opal white, resp. opal-white with purple bands; metal mounting. Fiell, 50s Decorative Art, Cologne 2000, p. 424; Ricke/Riemann, Aloys F. Gangkofner, Munch 2008, p. 107.

€ 700 - 900



168

**PAUL SCHNEIDER VON ESLEBEN
ARMCHAIR, C. 1955**

H. 75 x 63 x 56 cm. Made by Wilde & Spieth, Esslingen. Tubular steel, varnished black, rattan work, teak. Pfannschmidt, Metallmöbel, Stuttgart 1968, p. 55.

€ 400 - 600



169

**HERBERT HIRCHE
SERVING TROLLEY, 1956**

H. 49.5 x 70 x 46.5 cm. Made by Rosenthal, Espelkamp. Sectional steel, painted white, clear safety glass.

Hirche / Godel, Herbert Hirche, Stuttgart 1993, p. 21.

€ 600 - 700



170

**ULI WIESER
'WI 1035' DINING TABLE, 1959**

H. 73 x 146/212 x 90 cm. Made by Bofinger, Ilsfeld or Wohnbedarf, Zurich. Square metal tube and L-profiles, painted black, plywood, formica, white. Including: plate for extension (66 x 90 cm).

Cf. Sembach, Neue Möbel, Stuttgart 1982, p. 181.

€ 1.500 - 1.800



171

**GERMANY
SERVING TROLLEY, C. 1957**

H. 59 x 71 x 39 cm. Tubular metal, painted black, plywood with teak veneer, canework.

€ 400 - 500

172

**ARCO, GERMANY
ROCKING RECLINER SEAT, 1950S**

H. 90 x 70 x 170 cm. Bamboo cane, rattan, beechwood. Marked: Manufacturer's badge.

€ 700 - 800



173

**GERMANY
WICKER ROCKING CHAIR, 1950S**

H. 96 x 60 x 113 cm. Bamboo cane, rattan. Image online.

€ 300 - 400

174

**ARCO, GERMANY
TABLE, C. 1957**

H. 61 cm, D. 103 cm. Bamboo cane, rattan wickerwork, wood, red laminate.

€ 600 - 700



175

GERMANY

'TREE TRUNK TABLE', C. 1960

H. 49.5 x 200 x 60 cm. Square metal tube, varnished black, cut tree trunk (oak).

€ 500 - 700



176

**KAISER LEUCHTEN, NEHEIM-HÜSTEN
CEILING LIGHT, C. 1960**

H. 20 cm, D. 61 cm. Sheet metal, painted white and blue, sheet brass, glass, white, matt.

€ 700 - 900

178

WOLF BAUER (ATTR.)

'FLOWER BLOSSOMS' CARPET, C. 1965

H. 153 x 212 cm. Wool, earth tones.

€ 400 - 500



177

**HANS THEO BAUMANN
POUF, C. 1960**

H. 31.5 cm, D. 56 cm. Plywood, walnut veneer, black synthetic leather, black vinyl ribbons.

€ 600 - 700





179

**OTT INTERNATIONAL LIGHTS,
PINNEBERG
CEILING LIGHT, 1960S**

H. 50 cm, D. 112 cm. Tubular brass, sheet brass, silver-plated, colourless glass.
12-light. Lampshades in original boxes.
€ 2.900 - 3.300

Even if the studied painter and graphic artist Arnold Bode is best known as the initiator of the documenta in Kassel, his furniture designs should also hold attention. In 1900, Bode was born into his parents' carpentry, which specialised in interior work. After military service and war captivity, Bode worked as a professor at the Kassel 'Werkakademie' until the end of the 1960s, where he promoted the connection between art and craft based on the ideas of the Bauhaus. During this time he also realised some fascinating furniture designs. The 'Skid' four-seater sofa offered here is slightly reminiscent of Mies van der Rohe's 'Barcelona armchair'. However, Bode does not copy successful forms here, but reinterprets the design according to his own ideas and new needs.

180

**ARNOLD BODE
'SKID' FOUR-SEATER SOFA, 1950S**

H. 69 x 236 x 80 cm. Made by Federholzgesellschaft OHG, Kassel. Sectional metal, chrome-plated, wooden construction, black leather.
€ 2.500 - 3.500



181

**HEINZ G. PFAENDER
'OSLO' TABLE LIGHT, 1961**

H. 30 cm, D. 31.5 cm. Made by E. Hillebrand, Neheim-Hüsten. Sheet metal, painted black, rectangular metal, chrome-plated.
Pfaender, Meine Zeit in der Werkstatt Wagenfeld, Hamburg 1989, p. 179; Reinke (ed.): Design. Made in Germany, Cologne 2001, p. 63.
€ 350 - 400



182

**WILHELM WAGENFELD
6 '396' WALL LIGHTS, 1962**

H. 18 x 21.5 x 9 cm. Made by Lindner, Bamberg. Porcelain, white, glazed, glass, white, grooved.

Manske / Scholz (eds.), *Täglich in der Hand*, Bremen 1998, p. 325, no. 396.

€ 1.000 - 1.200

183

**FRIEDRICH HIRZ
'S 816' CHAIR, C. 1963/64**

H. 68 x 49 x 53 cm. Made by Thonet, Frankenberg. Tubular metal, lacquered black, black leatherette.

Leatherette replaced.

Cat. Friedrich Hirz 1907-1987, n.p. 1990, n.p.; Exh. cat. *Sitzen - Liegen - Schaukeln*, Bielefeld 2014, p. 93.

€ 1.800 - 2.200



184

**HELMUT BÄTZNER
4 'BA 1171' STACKING CHAIRS
AND A TABLE, 1964**

Table: H. 72.5 x 85 x 85 cm; chairs: H. 74 x 50 x 55 cm. Made by Bofinger, Ilsfeld. Polyester, reinforced with fibreglass, white and blue. Marked: Manufacturer's mark.

Sembach, *Neue Möbel*, Stuttgart 1982, p. 116.

€ 600 - 700

185

**PALME & WALTER, PALWA-
BELEUCHTUNGS-GMBH, GROSS-
ZIMMERN (ATTR.)
ILLUMINATED WALL MIRROR,
1960S**

D. 31.5 cm. Sheet metal, nickel-plated, partially painted white, glass.

Image online.

€ 300 - 400



187

**DIETER WITTE; ROLF KRÜGER
3 'OYSTER' WALL LIGHTS, 1968**

H. 23 x 45 x 11 cm. Made by Staff Leuchten, Lemgo. Sheet metal, painted crème-brown and white.

€ 1.800 - 2.200

188

**WILHELM BRAUN-FELDWEG
CEILING LIGHT, 1969**

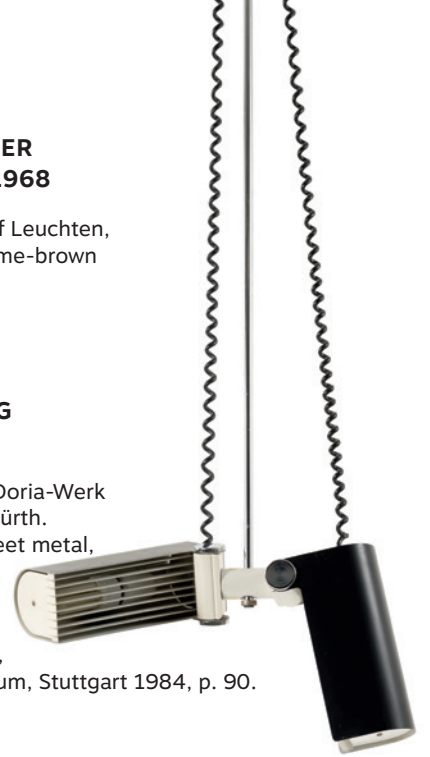
H. 137 x 54,5 x 10 cm. Made by Doria-Werk Walter Donner GmbH & Co. KG, Fürth.

Chrome-plated tubular metal, sheet metal, varnished black or white, resp.

Marked: Manufacturer's adhesive label.

Exh. cat. Wilhelm Braun-Feldweg, Württembergisches Landesmuseum, Stuttgart 1984, p. 90.

€ 350 - 450



189

**DORIA-WERK WALTER DONNER GMBH & CO. KG, FÜRTH
2 '5132' WALL LIGHTS, C. 1970**

H. 31 x 31 x 8 cm. Sheet metal, painted white and black. Marked: manufacturer's label.

€ 400 - 500

186

**HEINZ WIRTH
4 'TIVOLI' GARDEN CHAIRS, 1967**

H. 72 x 42.5 x 59 cm. Made by Erlau AG, Aalen. Sheet metal, metal rods, lacquered white, rubber, white.

Exh. cat. Möbeldesign, Made in Germany, Design Center Stuttgart/Landesgewerbeamt Baden Württemberg, 1985, fig. 67.4.

€ 2.000 - 3.000



190

**STAFF & SCHWARZ, LEMGO (ATTR.)
CEILING LIGHT, 1970S**

12-lights. H. 135 x 69 x 59 cm. Tubular metal, sheet metal, chrome plated, transparent glass.
Provenance: estate architect Rudolf Ortner, Munich.
Comes with two additional glass shades.
€ 800 - 1.200



191

**TEMDE LEUCHTEN, DETMOLD
WALL LIGHT, 1970S**

H. 50 x 21.5 x 62 cm. Tubular steel, chrome-plated.
Image online.
€ 300 - 400



193

**KALMAR FRANKEN KG
'12 HL' CEILING LIGHT, C. 1974**

12-lights. H. 145 x 63 x 63 cm. Tubular metal, sheet metal, chrome-plated.
€ 700 - 800

192

**REINHOLD ADOLF; HANS-JÜRGEN SCHRÖPFER
'SINUS' ARMCHAIR AND STOOL, 1976**

H. 89,5 x 80 x 94 cm; Ottoman: H. 46 x 72 x 57 cm. Made by Cor, Rheda-Wiedenbrück. Chromed and matted steel, brown leather.
Cf. Lübke, Cor, Rheda-Wiedenbrück 2003, pp. 50, 56f; Albus et al., moderne Möbel 150 Jahre Design, Königswinter 2009, p. 316.
€ 2.000 - 2.500





194

**INGO MAURER
'MOONLIGHT' WALL LIGHT, 1970S**

D. 27.5 cm. Made by Design M Ingo Maurer, Munich. Sheet metal, painted black, yellow, red and white. Marked: Manufacturer's label.

Very rare design from Ingo Maurer's early period.

€ 600 - 800

195

**INGO MAURER
2 'UCHIWA III' WALL LIGHTS, 1973**

H. 75 x 57 x 18 cm. Made by Design M Ingo Maurer, Munich. Bamboo, rice paper, painted white.

Not electrified.

Cf. Dessecker (ed.), Ingo Maurer, Gestalten mit Licht, Munich 2008, pp. 70f.

€ 700 - 800

196

**GERMANY
SCREEN, 1980S**

Closed: H. 184 x 55 x 6.5 cm; open: H. 184 x 168 x 2 cm. Beech wood, oil on plywood.

€ 400 - 500



197

**TEMDE LEUCHTEN,
DETMOLD
'887' CEILING LIGHT,
1970S**

H. 230 cm, D. 30 cm. Wooden balls. Marked: Manufacturer's label.

€ 700 - 800



198

**KALMAR FRANKEN KG
'9 DL' CEILING LIGHT, C. 1974**

H. 43 x 63 x 54 cm. Tubular metal, sheet metal, chrome-plated.

€ 400 - 500



199

**GERMANY (ATTR.)
2 'MEMPHIS STYLE' CHAIRS, 1980S**

H. 113 x 47 x 47.5 cm. Beech wood, painted black, orange and blue, tubular metal, square metal tube, matt chrome, blue textile.

€ 800 - 900

200

**GERMANY
2 ARMCHAIRS, 1980S**

H. 76 x 78 65 cm. Leather, blue and green, tubular metal, chrome-plated.

€ 900 - 1.200



201

GÜNTHER UECKER
'LETTERA' HIGH DESK, 1982

H. 130 x 90 x 100 cm. Made by Rosenthal, Espelkamp. Wood, painted black. Marked: Manufacturer's mark, quote from the designer: 'Gehend einen Gedanken fassend, ihn zu Papier bringend am Lese- und Schreibpult erübrigt den Umstand sich zu setzen', facsimile signature Uecker 82, Günther Uecker Stehpult 'LETTERA' Rosenthal Einrichtung.

€ 900 - 1.000



203

STEFAN BUMM
'ARGUS' TABLE LIGHT, 1983

H. 37 cm. Tubular metal, painted black. Hauffe, Fantasie und Härte, Giessen 1994, p. 107. € 800 - 900



202

BOGDAN BUDIMIROV
DRAWING TABLE, C. 1982

H. 72-154.5 x 153.5 x 95.5 cm. Made by MOYA drawing supplies, Munich. Wood, painted black, table top with white plastic coating.

With: two drawing rulers for clamping.

Thanks to a sophisticated folding and folding system, this drawing table can be adjusted to a wide variety of positions. Awarded the iF Design Award 1982. From the estate of the well-known Munich architect Herbert Groethuysen, among other things, Munich's first reinforced concrete church (Herz-Jesu-Kirche, 1950-1953, with Alexander Freiherr von Branca) and the editorial building of the Süddeutscher Verlag at Färbergraben in Munich (1963-70, with Detlef Schreiber and Gernot Sachsse) designed.

€ 900 - 1.200

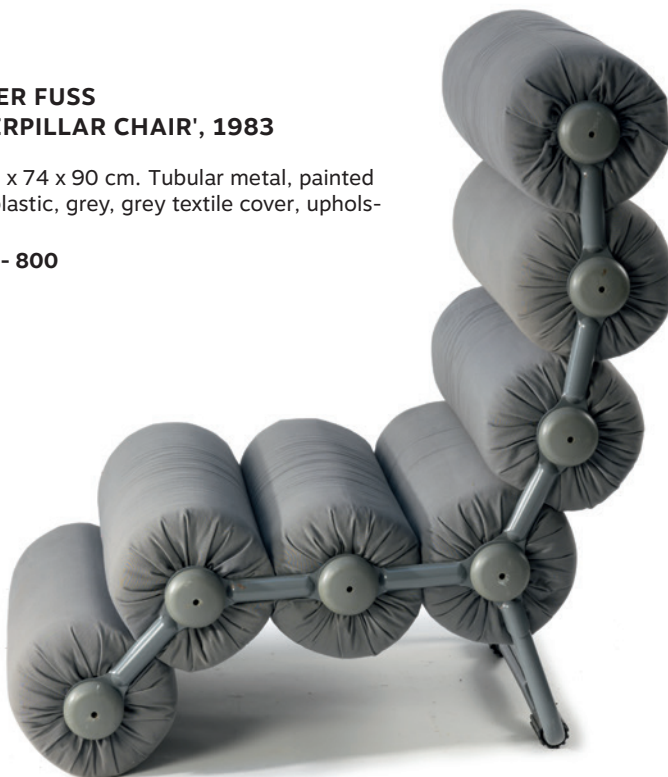


204

RAINER FUSS
'CATERPILLAR CHAIR', 1983

H. 100 x 74 x 90 cm. Tubular metal, painted grey, plastic, grey, grey textile cover, upholstered.

€ 700 - 800



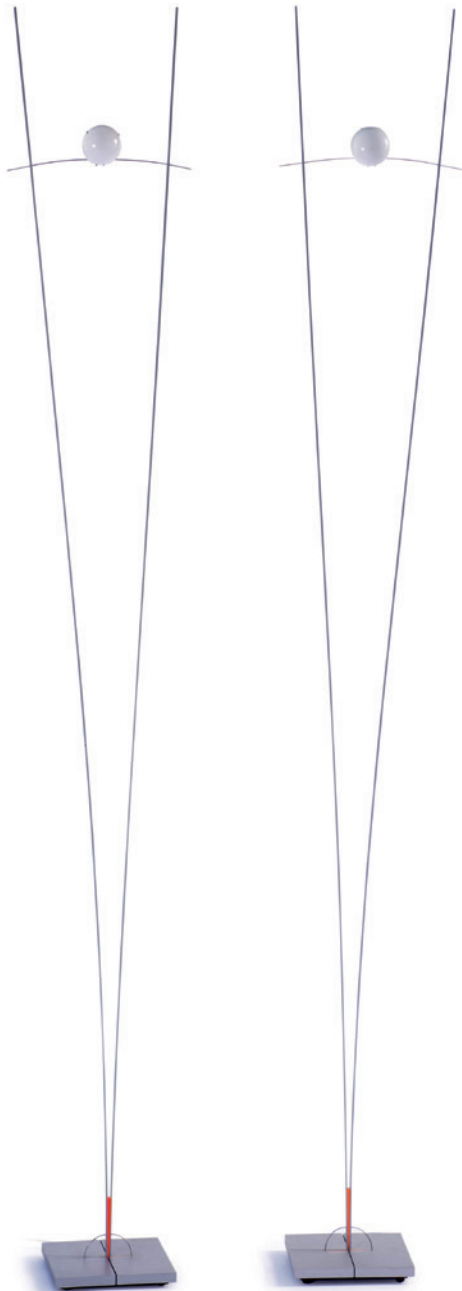
205

INGO MAURER; FRANZ RINGELHAN
2 'ILIOS' FLOORLAMPS, 1983

H. 191 cm. Made by Design M Ingo Maurer, Munich. Cast metal, metal rods, varnished grey, orange acrylic glass isolator, white glass. Marked: Manufacturer's adhesive label (1x).

Bauer (ed.), Ingo Maurer Making Light, Munich 1992, p. 252.

€ 700 - 900



206

BURKHARD VOGTHERR
'T-LINE CHAIR', 1984

H. 108 x 75 x 74 cm. Made by Arflex, Milan. Tubular metal, metal rod, black plastic, polyurethane, red textile. Marked: manufacturer's label.

€ 500 - 600

207

INGO MAURER
'ILÓ-ILÚ' CEILING LIGHT, 1986

Various dimensions. Made by Design M Ingo Maurer Munich. Steel wire, plastic, mirror glass, spotlights.

Bauer (ed.), Ingo Maurer Making Light, Munich 1992, p. 163; Cat. Ingo Maurer 2000/2001, p. 120f.

Image online.

€ 500 - 600

208

OLIVER SCHNEIDER
ARMCHAIR, 1988

H. 151.5 x 41 x 60 cm. Made by X99, Cologne. Multicoloured cardboard tubes, wood, textile cover, black, metal ball, sheet metal. Marked: X99, Schneider '88 (black felt pen).

€ 400 - 500



209

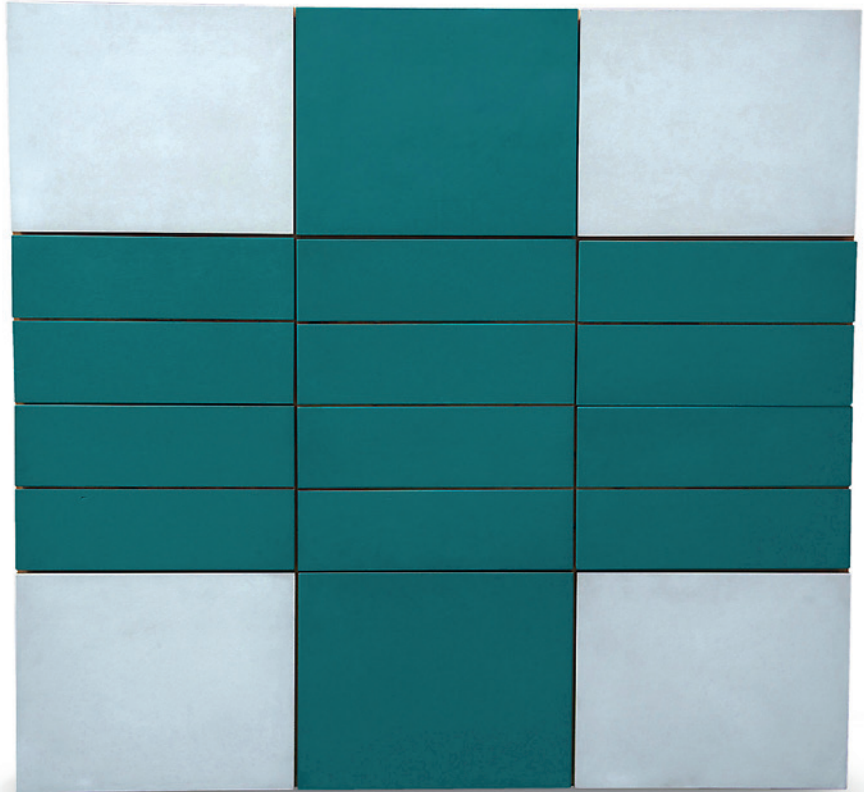
RICHARD MERKLE
UNICUM SIDEBORD, 1990

H. 150 x 153.5 x 52 cm. Wooden construction in multiplex (plywood) and acrylic on wood; 7 drawers and 4 doors.

Minimalistic unicum in the style of Donald Judd and Max Bill.

The green surface was applied by Merkle himself and has a similar structure as have the paintings of Imi Knoebel. Works of Merkle were exhibited, among others, at the Daimler Art Collection in the exhibition 'Minimalism and Applied'.

€ 3.000 - 5.000



210

NORBERT BERGHOF; MICHAEL A. LANDES;
WOLFGANG RANG
'F12-KABUKI' CHAIR, 1990

H. 110.5 x 44.5 x 54 cm. Made by Draenert Studio GmbH, Immenstaad. Square metal tube, lacquered black, wood, painted black, black leather, multicoloured textile.

This chair was only made for the Kabuki restaurant of the same name in Frankfurt/Main. There were approx. 50 pieces. This piece with the original upholstery fabric.

Company brochure of Draenert Studio GmbH, Immenstaad, n.d., n.p.

€ 400 - 500



211

MUNICH
TABLE LIGHT, C. 1990

H. 77 cm (max), arm: L. 55-96 cm. Tubular metal, painted mint green, tubular metal, covered grey, plastic, black.

€ 1.000 - 1.500



212

**GERMANY
SEAT WITH COMPARTMENT,
1990S**

H. 53 x 120 x 30 cm. Walnut, walnut veneer, brown leather.

€ 600 - 700

213

**KONSTANTIN GRČIĆ
STANDING ASHTRAY, 1993**

H. 76 cm, D. 10.5 cm. Tubular metal, metal rod, matt chrome-plated, cast metal, anodized black, black glass (ashtray). According to the Grčić studio in Berlin, the ashtray was only made twice and never went into serial production.

Image online.

€ 500 - 600



214

**MAX LONGIN
ARMCHAIR, 1992**

H. 77 x 60.5 x 60 cm. Made by Arthouse. Tubular aluminium, sheet aluminium painted grey. Marked: ARTHOUS 1992 LONGIN (plaque).

€ 600 - 700

215

**TILL LEESER
'METEOR' FLOORLAMP, 1992**

H. 180 cm, L. 58.5 cm Atelier, Hamburg. Sheet metal, painted blue and gold, metal rod, nickel-plated, cast bronze. Marked: label atelier.

€ 1.500 - 1.800

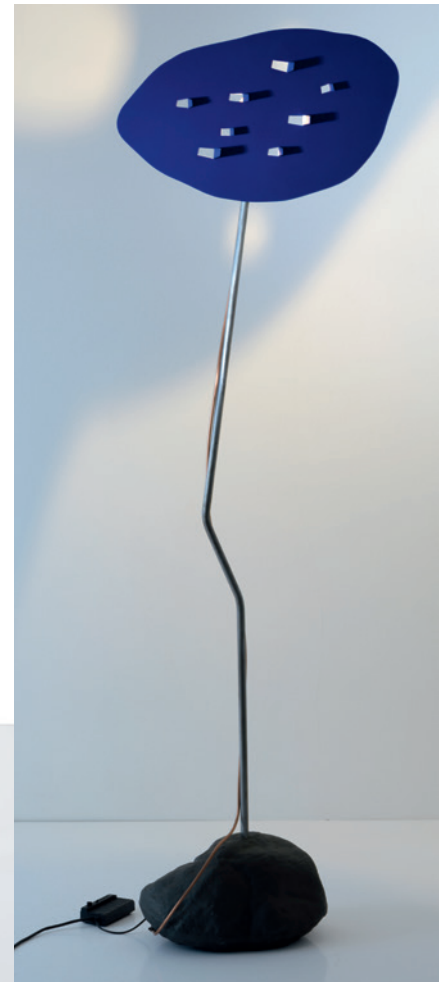
216

**AXEL MEISE; CHRISTOPH KÜGLER
'OCCHIO TERRA DOPPIO' FLOOR-
LAMP, C. 1998**

H. 180 cm. Made by AML, Axel Meise Licht, Munich. Tubular metal, sheet metal, painted grey. Marked: Manufacturer's label.

Image online.

€ 400 - 500

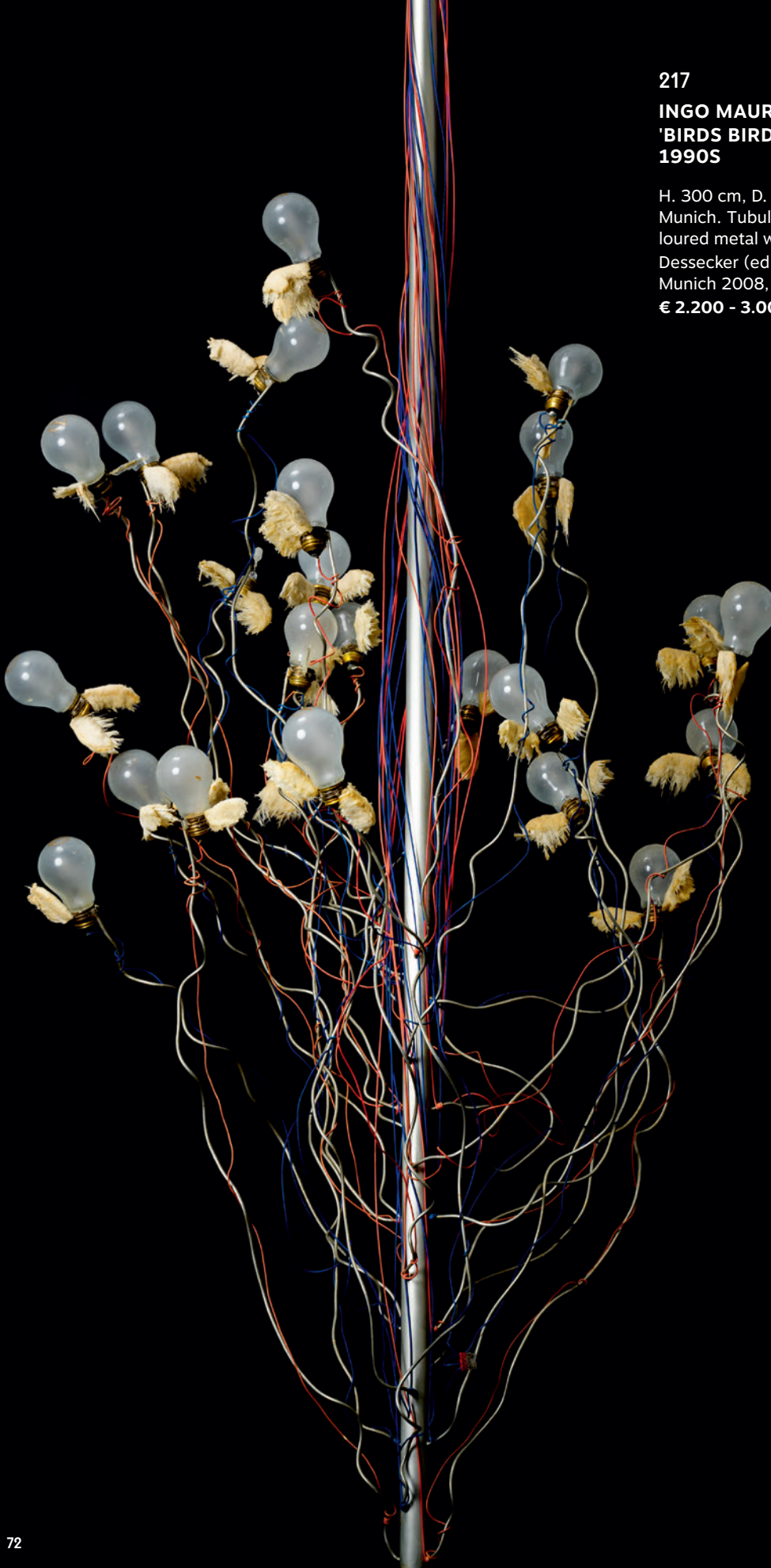


217

INGO MAURER
'BIRDS BIRDS BIRDS' CEILING LIGHT,
1990S

H. 300 cm, D. 90 cm. Made by Ingo Maurer GmbH,
Munich. Tubular metal, chrome-plated, multico-
loured metal wires, light bulbs, feathers.
Dessecker (ed.), Ingo Maurer, Gestalten mit Licht,
Munich 2008, p. 135.

€ 2.200 - 3.000



218

STEFAN DIEZ
'CHASSIS CHAIR' FROM THE FIRST
POST-PRODUCTION SERIES, 2012/13

H. 78.5 x 48 x 57.5 cm. Made by Stefan Diez Office, Munich for Schellmann Furniture, Munich; Wilkhahn, Eimbeckhausen. Frame made of green galvanised sheet steel; Seat made of naturally tanned and undyed cowhide leather; Padding made of polyethylene (PE) with spacer fabric. Marked: Wilkhahn (embossed); Label STEFAN DIEZ OFFICE, 0004, SF CH GL.
 € 900 - 1.000



219

STEFAN DIEZ
'CHASSIS CHAIR' FROM THE FIRST
POST-PRODUCTION SERIES, 2012/13

H. 87,5 x 48 x 58,5 cm. Made by Stefan Diez Office, Munich for Schellmann Furniture, Munich; Wilkhahn, Eimbeckhausen. Frame of galvanised sheet steel (polished), seat of dark blue fabric; Polyethylene upholstery with spacer fabrics. Marked: Wilkhahn (embossed).
 € 800 - 900



220

STEFAN DIEZ
'CHASSIS CHAIR' FROM THE FIRST
POST-PRODUCTION SERIES, 2012/13

H. 78.5 x 48 x 57.5 cm. Made by Stefan Diez Office, Munich for Schellmann Furniture, Munich; Wilkhahn, Eimbeckhausen. Frame made of mud-brown galvanised sheet steel; Seat made of black textile fabric, upholstery made of polyethylene (PE) with spacer fabric. Marked: Wilkhahn (embossed); Label STEFAN DIEZ OFFICE, 0007, SF CH GL.
 € 800 - 900

In the first post production edition of the chassis the seat is coated with perforated leather, tanned with plant-based materials, the way it had been planned originally but could not be realised earlier. The frame becomes corrosion resistant through a sort of galvanic plating, where the sheet steel not only gets a protective zinc-coating but is also dyed at the same time. Through this colourful zinc-plating an iridescent effect is achieved, which makes the surface of the chair glisten like a soap bubble.

221

STEFAN DIEZ
'CHASSIS CHAIR FROM THE FIRST
POST-PRODUCTION SERIES, 2012/13

H. 77.5 x 48 x 58 cm. Made by Stefan Diez Office, Munich for Schellmann Furniture, Munich; Wilkhahn, Eimbeckhausen. Frame made of dark grey galvanised sheet steel; Black leatherette seat; Padding made of polyethylene (PE) with spacer fabric. Marked: Wilkhahn (embossed).
 € 900 - 1.000

Stefan Diez introduction to furniture design began in 1991 when for three years he worked as a cabinet maker. Diez went on to study at Staatliche Akademie der Bildenden Künste in Stuttgart in 1996 that he completed with a Diploma in Industrial Design. He founded his studio in 2003 and since then has worked in various fields of design ranging from furniture and tableware to industrial design, as well as exhibition design for companies like Authentics, Bree, e15, Established and Sons, Moroso, Rosenthal, Thonet, Wilkhahn and others. Some of his products have received international design awards, among others the 'Designpreis der Bundesrepublik Deutschland', the 'IF Gold award' and the 'red dot best of the best award'. 2008 he was art director of Authentics together with Mirko Borsche and Christian Gärtner. Since 2007 he is a Professor for Industrial Design at the HFG Karlsruhe.

Diez works intensively with materials, technology and is passionate in his quest to fathom out their limitations. Together with his office they develop products that are precise, yet simple and above all are meant to meet human needs. He is considered as one of the most innovative and promising German designers.

Exh. cat. 7 STUDIES, Schellmann Furniture München, 2013, pp. 27-39.

IMPRESS

MANAGING DIRECTOR AND AUCTIONEER:

Askan Quittenbaum
+49 89 273702-113
a.quittenbaum@quittenbaum.de

DEPUTY MANAGING DIRECTOR:

Dr. Claudia Quittenbaum
+49 89 273702-111
c.quittenbaum@quittenbaum.de

SPECIALISTS:

Leitung Modernes Design
Arthur Floss, Dipl. Betriebswirt FH
+49 89 273702-110
arthur.floss@quittenbaum.de

Faridah Younès M.A.
+49 89 273702-115
faridah.younes@quittenbaum.de

ASSISTANCE:

Veit Volwahren M.A.
+49 89 273702-112
veit.volwahren@quittenbaum.de

Elizaveta Leongardt B.A.
+49 89 273702-10
e.leongardt@quittenbaum.de

Carina Schlager B.A.

BOOK KEEPING:

Alicja Wika
+49 89 273702-117
alicja.wika@quittenbaum.de

CATALOGUE ORDER:

Annette Ehrenhardt
+49 89 273702-120
buchhaltung@quittenbaum.de

LOGISTICS AND SHIPPING:

Dirk Driemeyer
+49 89 273702-112
dirk.driemeyer@quittenbaum.de

M2 Logistik
+49 8121 223015
service@m2logistik.de

PHOTOGRAPHS:

Jochen Splett
Mirco Taliercio

DESIGN:

Daniela Paringer,
design & print GbR

PRODUCTION AND PRINTING:

G. Peschke Druckerei GmbH,
München









QUITTENBAUM

Kunstauktionen München

QUITTENBAUM Kunstauktionen GmbH

Theresienstrasse 60 · D-80333 Munich

Phone 089-27 37 02 10 · Fax 089-27 37 02 122

info@quittenbaum.de · www.quittenbaum.de

